



Notices to Mariners

NtM 14/2023

Notices: 93 - 95 / 20.05.2023



Table of Contents

Title	Page
Index by Area	2
Index by Chart	3
Gulf of Finland	4
Archipelago Sea	6
Current Preliminary (P) and Temporary (T) notices (19.05.2023)	8

Index by Area

Gulf of Finland

Charts

*93/2023

21, B

Archipelago Sea

Charts

*94/2023

32, 162, C

*95/2023

32, 162, C

Index by Chart

Charts	Notices
21	*93/2023
32	*94/2023, *95/2023
162	*94/2023, *95/2023
B	*93/2023
C	*94/2023, *95/2023

Gulf of Finland

*93/2023

2023-05-19

Finland. Gulf of Finland. Raseborg. Odensö. Cables and pipelines

Charts

21



B634, B634.1, B635

(INT 1253)

Previous

39/2023 [↗](#)

84/2023 [↗](#)

1	21, B634, B635		(1) 59°55.408'N 23°19.450'E
Add 	Between the following positions:	(2) 59°55.376'N 23°19.515'E	
		(3) 59°55.536'N 23°20.349'E	
		(4) 59°55.326'N 23°21.049'E	
		(5) 59°55.295'N 23°21.513'E	
2	21, B634, B634.1		(1) 59°55.920'N 23°21.987'E
Add 	Between the following positions:	(2) 59°56.043'N 23°22.081'E	
		(3) 59°56.093'N 23°22.389'E	
		(4) 59°56.093'N 23°22.641'E	
		(5) 59°55.958'N 23°22.869'E	
		(6) 59°55.905'N 23°22.790'E	
3	21, B634		(1) 59°55.921'N 23°22.942'E
Add 	Between the following positions:	(2) 59°55.777'N 23°23.101'E	
		(3) 59°55.776'N 23°23.161'E	
4	21, B634, B635		(1) 59°55.374'N 23°23.387'E
Add 	Between the following positions:	(2) 59°55.422'N 23°23.483'E	
		(3) 59°55.411'N 23°23.796'E	
5	21, B634, B634.1		(1) 59°56.108'N 23°22.553'E
Add 	Between the following positions:	(2) 59°56.235'N 23°22.619'E	
		(3) 59°56.353'N 23°22.872'E	
		(4) 59°56.284'N 23°23.027'E	
6	21, B634, B634.1		(1) 59°56.284'N 23°23.027'E
Add 	Between the following positions:	(2) 59°56.333'N 23°22.976'E	
		(3) 59°56.547'N 23°23.253'E	
		(4) 59°56.551'N 23°23.367'E	

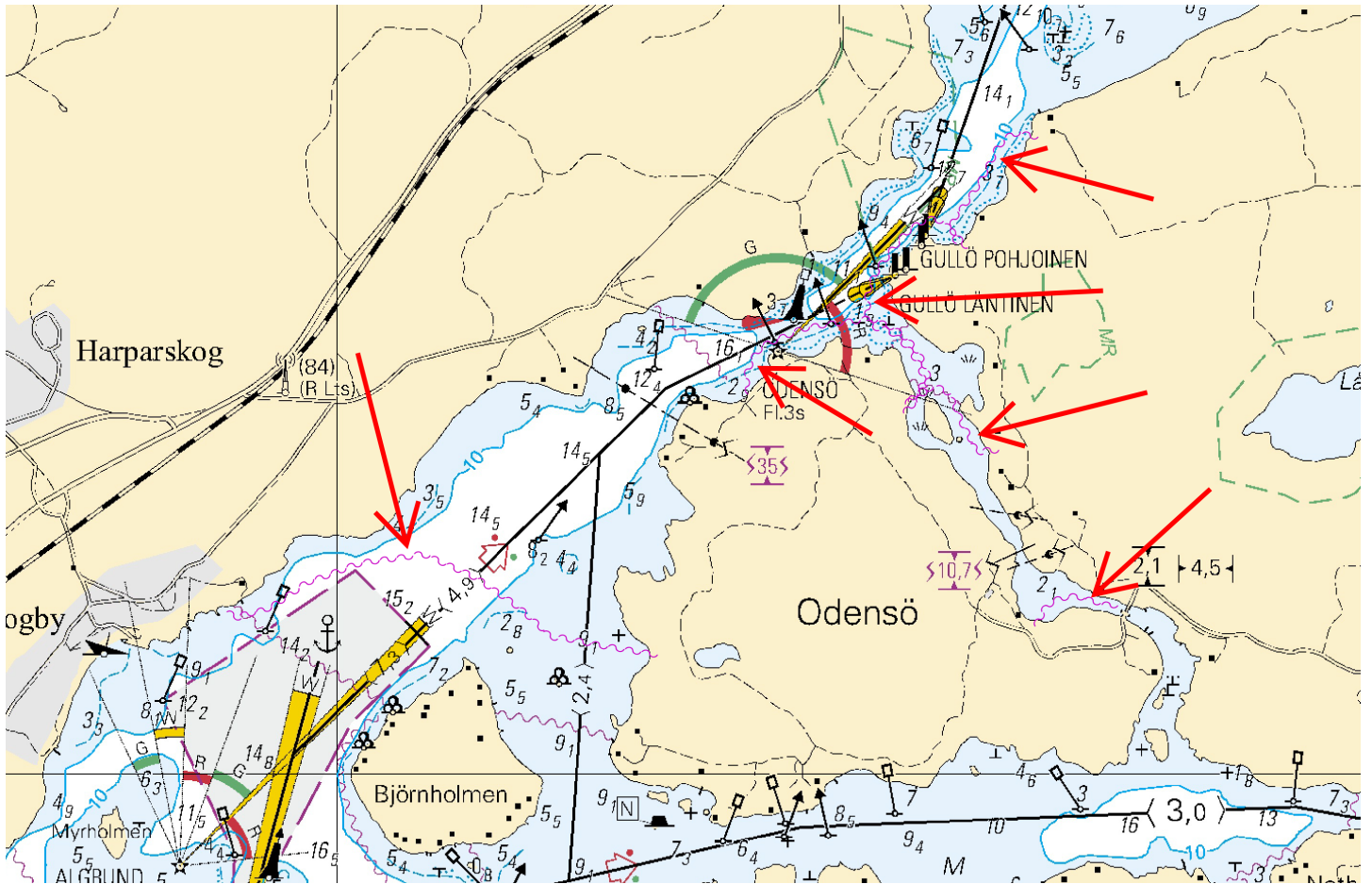


Image for reference, chart extracts not to scale of chart.

(Traficom, Helsinki/Helsingfors 2023)

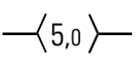
Archipelago Sea


*94/2023

2023-05-19

Finland. Archipelago Sea. Föglö. Buoyage. Fairways

Charts		Previous
32	(INT 1195)	88/2023 ↗
162	(INT 1157)	88/2023 ↗
C745, C746, C753		88/2023 ↗

1	32, 162, C745, C746, C753			
Add		Between the following positions:	(1)	60°01.476'N 20°18.427'E
		Delete former centre line	(2)	60°01.888'N 20°19.164'E
			(3)	60°03.182'N 20°20.903'E
			(4)	60°03.842'N 20°20.980'E

2	32, 162, C745, C746, C753			
Move			From	60°03.525'N 20°20.765'E
			To	60°03.502'N 20°20.804'E 6735

3	32, 162, C753			
Amend			60°02.167'N	20°19.369'E 6672



Image for reference, chart extracts not to scale of chart.

*95/2023

2023-05-19

Finland. Archipelago Sea. Lumparland. Fargervik. Buoyage

Charts		Previous
32	(INT 1195)	94/2023 ↗
162	(INT 1157)	94/2023 ↗
C752, C752.2		94/2023 ↗

1 32, 162, C752, C752.2

Move



From

60°07.364'N 20°18.198'E

To

60°07.356'N 20°18.255'E

41403

(Traficom, Helsinki/Helsingfors 2023)

Current Preliminary (P) and Temporary (T) notices (19.05.2023)

Gulf of Finland

T&P	Charts	Gulf of Finland
174(T)/2019 ↗	951	SE of Bol'soj Tjuters. Obstructions
296(T)/2020 ↗	17, 18, 191, 952, A, B	Helsinki. Sipoo. Areas and borders
19(T)/2021 ↗	951, A	NW of Gogland. Light Severnyj Virgin extinguished. Notice repeated. Buoyage
20(T)/2021 ↗	951, A	TSS OFF ROOSHER ISLAND. Lighthouse Rodser extinguished. Notice repeated. Buoyage
228(T)/2021 ↗	951, A	Krestovyj. Lighthouse Krestovyj extinguished. Notice repeated. Buoyage
296(T)/2021 ↗	18, 191, A, B	Kruunuvuori. Korkeasaari...Cultural Features. Vertical Clearances
303(T)/2021 ↗	18, 191, A, B	Helsinki. Hernesaari. Notice repeated. Buoyage
304(T)/2021 ↗	18, 192, A, B	Helsinki. Vuosaari. Notice repeated. Buoyage. Areas and borders
65(T)/2022 ↗	A, S	Vyborg. Destroyed leading beacon. Notice repeated. Buoyage
66(T)/2022 ↗	A, S	Vyborg. Light extinguished. Notice repeated. Buoyage
86(T)/2022 ↗	18, 191, 952, A, B	Helsinki. Kruunuvuori. Restrictions on small craft traffic. Fairways
90(T)/2022 ↗	951	Tiskolovo. Lighthouse Kajbolovo. Buoyage
196(T)/2022 ↗	951	Narva Bay. Areas and borders
226(T)/2022 ↗	18, 191, A, B	Helsinki. Sompasaari. Crown Bridges. Notice repeated. Buoyage
232(T)/2022 ↗	18, 191, A, B	Helsinki. Hernesaari. Notice repeated. Buoyage. Areas and borders
266(T)/2022 ↗	18, 191, A, B	Helsinki. Sompasaari...Notice repeated. Areas and borders
61(T)/2023 ↗	14, 138, A	Kotka. Mussalo harbour...Notice repeated. Areas and borders
84(T)/2023 ↗	19, 20, B	Ingå. Porkalafjärden. Edge mark Inkoo 6 inoperative. Buoyage

Archipelago Sea

T&P	Charts	Archipelago Sea
107(T)/2021 ↗	26, 190, D	Naantali. Raumakari...Kirkonsalmi. Rafts with seal repellent systems. Buoyage
253(T)/2022 ↗	26, D	Pargas. Kirjala. Hessund. Bridge repair works. Areas and borders
15(T)/2023 ↗	27, 167, D	Pargas. S of Utö. Buoyage

Aland Sea

T&P	Charts	Aland Sea
-	-	

Bothnian Sea

T&P	Charts	Bothnian Sea
30(T)/2022 ↗	41, 127, E	Rauma. Ulko-Petäjäs. Areas and borders
148(T)/2022 ↗	956	Härnösand. Vårdkasberget. Maintenance of aids to navigation. Buoyage
160(T)/2022 ↗	41, 127, E	Rauma. Otanlahti. Flytande ö. Obstructions
1(T)/2023 ↗	42, 125, E	Pori. Tahkoluoto. Buoyage

The Quark

T&P	Charts	The Quark
340(T)/2021 ↗	48, 115, F	Vaasa. Vaskiluoto. Buoyage
237(T)/2022 ↗	48, 115, 956, 957, F	Vaasa. Vaskiluoto. Notice repeated. Fairways
238(T)/2022 ↗	48, 115, 921, F, M	Vaasa. Vaskiluoto. Notice repeated. Buoyage
239(T)/2022 ↗	48, 115, 956, 957, F	Vaasa. Vaskiluoto. Notice repeated. Depths. Buoyage. Fairways. Fairway areas
57(T)/2023 ↗	957, F	S of Umeå. Light Fjärdgrund extinguished. Buoyage
78(T)/2023 ↗	48, 115, F	Vaasa. Vaskiluoto. Dredging operations. Areas and borders

Bay of Bothnia

T&P	Charts	Bay of Bothnia
256(T)/2022 ↗	60, 958, 8071	Off Oulu. Light buoy withdrawn for the winter. Virtual AIS. Buoyage
47(T)/2023 ↗	57, 119, 845, 846	Port of Oulu. (N2000) (BSCD2000)...Depths. Fairways. Fairway areas
77(T)/2023 ↗	51, 957, F	Kokkola. Light Kallan extinguished. Buoyage
89(T)/2023 ↗	52, 53, 957, F	Kokkola. Lohtaja. Firing exercise. Areas and borders

Vuoksi watercourse

T&P	Charts	Vuoksi watercourse
268(T)/2019 ↗	M	Kuopio. Kotkatniemi. Buoyage
214(T)/2020 ↗		Leppävirta. Hyvärilä. Buoyage
180(T)/2022 ↗	L	Lappeenranta. Porkka. Light Luovukkaluoto. Buoyage
90(T)/2023 ↗	921, M	Kuopio. Light Sotkanselkä operational. Notice repeated. Buoyage

Kymijoki watercourse

T&P	Charts	Kymijoki watercourse
-	-	

Kokemäijoki watercourse

T&P	Charts	Kokemäijoki watercourse
-	-	

Oulujoki watercourse

T&P	Charts	Oulujoki watercourse
-	-	

Paatsjoki watercourse

T&P	Charts	Paatsjoki watercourse
-	-	

Saimaa Canal

T&P	Charts	Saimaa Canal
-	-	

Northern Baltic

T&P	Charts	Northern Baltic
-	-	

Announcements

T&P	Charts	Announcements
291(T)/2022 ↗		Bay of Bothnia. Off Oulu. V-AIS. Notice repeated.
53(T)/2023 ↗		Geta. Saltvik. Vårdö. Geotechnical seabed surveys. Notice repeated.