



Notices to Mariners

NtM 23/2023

Notices: 164 - 166 / 20.08.2023



Table of Contents

Title	Page
Index by Area	2
Index by Chart	3
The Quark	4
Oulujoki watercourse	5
Announcements	6
Current Preliminary (P) and Temporary (T) notices (18.08.2023)	7

Index by Area

The Quark

Charts

*164(T)/2023

48, 115, 820

Oulujoki watercourse

Charts

*166/2023

T

Announcements

Charts

*165/2023

Index by Chart

Charts	Notices
48	*164(T)/2023
115	*164(T)/2023
820	*164(T)/2023
T	*166/2023

The Quark

*164(T)/2023

2023-08-18

Finland. The Quark. Vaasa. Vaskiluoto. Buoyage




Charts

48	(INT 1139)	159/2023 ↗
115.C	(INT 11391)	159/2023 ↗
820, 820.B		159/2023 ↗

Previous

Time: 21.08 - to approx. 1 December 2023

References: [78\(T\)/2023 ↗](#), [110\(T\)/2023 ↗](#), [126\(T\)/2023 ↗](#), [143/2023 ↗](#), [142\(T\)/2023 ↗](#)

1 Amend    V-AIS 48, 115.C, 820, 820.B 63°05.090'N 21°33.275'E 86730

(Traficom, Helsinki/Helsingfors 2023)

Oulujoki watercourse

*166/2023

2023-08-18

Finland. Oulujoki watercourse. Vaala. Teeriniemi. Buoyage

Charts

T391, T392, T393

Previous

26/2019 [↗](#)

1		T391, T392, T393			
Delete			64°23.510'N	27°01.415'E	34550
2		T391, T392, T393			
Delete			64°23.543'N	27°01.082'E	34548
3		T391, T392, T393			
Delete			64°23.530'N	27°01.070'E	34549
4		T391, T392, T393			
Delete			64°23.799'N	27°00.494'E	28216
5		T391, T392, T393			
Delete			64°23.793'N	27°00.468'E	28215

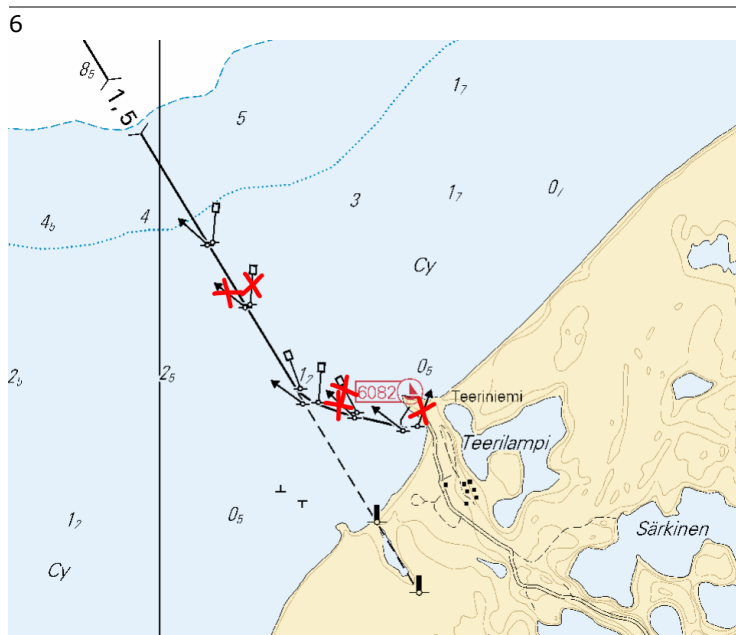


Image for reference, chart extracts not to scale of chart.

(Traficom, Helsinki/Helsingfors 2023)

Announcements

*165/2023

2023-08-18

Finland. The Quark. Bay of Bothnia. Chart Folio F. Chart Folio G. Rescue Services.

Charts

Previous

1

In Information pages of Chart folios F and G has incorrectly notified frequency of MF-DSC (218,5 kHz). The correct frequency is 2187,5 kHz.

2

Pelastuspalvelu

Yleinen hätänumero
0294 1000

Radioyhteydet
VHF-DSC 70
VHF 16
MF-DSC ~~218,5~~ kHz
MF-DSC2187,5 kHz

Image for reference, chart extracts not to scale of chart.

3

Räddningstjänsten

Sjöräddningens alarmnummer
0294 1000

Radiokommunikation
VHF-DSC 70
VHF 16
MF-DSC ~~218,5~~ kHz
MF-DSC2187,5 kHz

Image for reference, chart extracts not to scale of chart.

4

Rescue Services

Maritime SAR Alarm number
0294 1000

Radio communications
VHF-DSC 70
VHF 16
MF-DSC ~~218,5~~ kHz
MF-DSC2187,5 kHz

Image for reference, chart extracts not to scale of chart.

(Traficom, Helsinki/Helsingfors 2023)

Current Preliminary (P) and Temporary (T) notices (18.08.2023)

Gulf of Finland

T&P	Charts	Gulf of Finland
174(T)/2019 ↗	951	SE of Bol'soj Tjuters. Obstructions
296(T)/2020 ↗	17, 18, 191, 952, A, B	Helsinki. Sipoo. Areas and borders
19(T)/2021 ↗	951, A	NW of Gogland. Light Severnyj Virgin extinguished. Notice repeated. Buoyage
20(T)/2021 ↗	951, A	TSS OFF ROOSHER ISLAND. Lighthouse Rodser extinguished. Notice repeated. Buoyage
228(T)/2021 ↗	951, A	Krestovyj. Lighthouse Krestovyj extinguished. Notice repeated. Buoyage
296(T)/2021 ↗	18, 191, A, B	Kruunuvuori. Korkeasaari...Cultural Features. Vertical Clearances
303(T)/2021 ↗	18, 191, A, B	Helsinki. Hernesaari. Notice repeated. Buoyage
304(T)/2021 ↗	18, 192, A, B	Helsinki. Vuosaari. Notice repeated. Buoyage. Areas and borders
65(T)/2022 ↗	A, S	Vyborg. Destroyed leading beacon. Notice repeated. Buoyage
66(T)/2022 ↗	A, S	Vyborg. Light extinguished. Notice repeated. Buoyage
86(T)/2022 ↗	18, 191, 952, A, B	Helsinki. Kruunuvuori. Restrictions on small craft traffic. Fairways
90(T)/2022 ↗	951	Tiskolovo. Lighthouse Kajbolovo. Buoyage
196(T)/2022 ↗	951	Narva Bay. Areas and borders
226(T)/2022 ↗	18, 191, A, B	Helsinki. Sompasaari. Crown Bridges. Notice repeated. Buoyage
232(T)/2022 ↗	18, 191, A, B	Helsinki. Hernesaari. Notice repeated. Buoyage. Areas and borders
266(T)/2022 ↗	18, 191, A, B	Helsinki. Sompasaari...Notice repeated. Areas and borders
61(T)/2023 ↗	14, 138, A	Kotka. Mussalo harbour...Notice repeated. Areas and borders
84(T)/2023 ↗	19, 20, B	Ingå. Porkalafjärden. Edge mark Inkoo 6 inoperative. Buoyage

Archipelago Sea

T&P	Charts	Archipelago Sea
107(T)/2021 ↗	26, 190, D	Naantali. Raumakari...Kirkonsalmi. Rafts with seal repellent systems. Buoyage
253(T)/2022 ↗	26, D	Pargas. Kirjala. Hessund. Bridge repair works. Areas and borders
15(T)/2023 ↗	27, 167, D	Pargas. S of Utö. Buoyage

Aland Sea

T&P	Charts	Aland Sea
-	-	

Bothnian Sea

T&P	Charts	Bothnian Sea
30(T)/2022 ↗	41, 127, E	Rauma. Ulko-Petäjäs. Areas and borders
148(T)/2022 ↗	956	Härnösand. Vårdkasberget. Maintenance of aids to navigation. Buoyage
160(T)/2022 ↗	41, 127, E	Rauma. Otanlahti. Flytande ö. Obstructions
1(T)/2023 ↗	42, 125, E	Pori. Tahkoluoto. Buoyage
104(T)/2023 ↗	955	Off Pori. ODAS buoys. Buoyage
108(T)/2023 ↗	40, 954, 955	Brändö. Kustavi. ODAS buoys. Buoyage
109(T)/2023 ↗	44, 813, 956, E	Kristinestad. Lighthouse Kristiinankaupungin majakka extinguished...Buoyage
127(T)/2023 ↗	41, 955, E	Uusikaupunki. Light Kajakulma extinguished. Buoyage
128(T)/2023 ↗	953, 954, 955, C	Saltvik. Brändö. Measuring equipment on seabed. Buoyage

The Quark

T&P	Charts	The Quark
238(T)/2022 ↗	48, 115, 921, F, M	Vaasa. Vaskiluoto. Notice repeated. Buoyage
57(T)/2023 ↗	957, F	S of Umeå. Light Fjärdgrund extinguished. Buoyage
110(T)/2023 ↗	48, 115, 820	Vaasa. Vaskiluoto. Dredging operations. Notice repeated. Areas and borders
126(T)/2023 ↗	48, 115, 820	Vaasa. Vaskiluoto. Dredging operations. Areas and borders
142(T)/2023 ↗	48, 115, 820, 956, 957, 8061, 8065	Vaasa. Vaskiluoto. Notice repeated. Buoyage. Fairways. Fairway areas
164(T)/2023 ↗	48, 115, 820	Vaasa. Vaskiluoto. Buoyage

Bay of Bothnia

T&P	Charts	Bay of Bothnia
47(T)/2023 ↗	57, 119, 845, 846	Port of Oulu. (N2000) (BSCD2000)...Depths. Fairways. Fairway areas
102(T)/2023 ↗	57, 847	Oulu. Luodematalat. Buoyage
103(T)/2023 ↗	59, 60, 854, 958	Channel to Kemi. Port of Kemi. Dredging operations. Areas and borders
148(T)/2023 ↗	57, 847	Off Oulu. Maintenance of aids to navigation. Buoyage

Vuoksi watercourse

T&P	Charts	Vuoksi watercourse
268(T)/2019 ↗	M	Kuopio. Kotkatniemi. Buoyage
214(T)/2020 ↗		Leppävirta. Hyvärilä. Buoyage
90(T)/2023 ↗	921, M	Kuopio. Light Sotkanselkä operational. Notice repeated. Buoyage

Kymijoki watercourse

T&P	Charts	Kymijoki watercourse
-	-	

Kokemäijoki watercourse

T&P	Charts	Kokemäijoki watercourse
-	-	

Oulujoki watercourse

T&P	Charts	Oulujoki watercourse
-	-	

Paatsjoki watercourse

T&P	Charts	Paatsjoki watercourse
-	-	

Saimaa Canal

T&P	Charts	Saimaa Canal
-	-	

Northern Baltic

T&P	Charts	Northern Baltic
-	-	

Announcements

T&P	Charts	Announcements
291(T)/2022 ↗		Bay of Bothnia. Off Oulu. V-AIS. Notice repeated.
99(T)/2023 ↗		Off Merikarvia. Hydrographic surveying in progress.
137(T)/2023 ↗		Helsinki. Korkeasaari...Restrictions on small craft traffic