



# Notices to Mariners

## NtM 24/2023

Notices: 167 - 173 / 31.08.2023



# Table of Contents

<b>Title</b>	<b>Page</b>
Index by Area	2
Index by Chart	3
Gulf of Finland	4
Bothnian Sea	6
Bay of Bothnia	7
Vuoksi watercourse	8
Paatsjoki watercourse	9
Current Preliminary (P) and Temporary (T) notices (31.08.2023)	10

# Index by Area

## **Gulf of Finland**

### **Charts**

\*168/2023

21, B

\*169/2023

18, A, B

## **Bothnian Sea**

### **Charts**

\*167(T)/2023

954, 955, C

## **Bay of Bothnia**

### **Charts**

\*173/2023

52, 117, 832, 833

## **Vuoksi watercourse**

### **Charts**

\*170/2023

L

\*171/2023

482, M

## **Paatsjoki watercourse**

### **Charts**

\*172/2023

480

# Index by Chart

<b>Charts</b>	<b>Notices</b>
18	*169/2023
21	*168/2023
52	*173/2023
117	*173/2023
480	*172/2023
482	*171/2023
832	*173/2023
833	*173/2023
954	*167(T)/2023
955	*167(T)/2023
A	*169/2023
B	*168/2023, *169/2023
C	*167(T)/2023
L	*170/2023
M	*171/2023

# Gulf of Finland

\*168/2023

2023-08-31

Finland. Gulf of Finland. Raseborg. Degergård. Boviksträsket. Cables and pipelines





## Charts

21  
B639, B640, B641

(INT 1253)

## Previous

158/2023 [↗](#)  
158/2023 [↗](#)

1	21, B640		(1) 60°03.030'N 23°06.242'E
Add 	Between the following positions:	(2) 60°03.060'N 23°06.345'E	
		(3) 60°03.144'N 23°06.330'E	
		(4) 60°03.218'N 23°06.237'E	
2	21, B639, B640, B641		(1) 60°03.600'N 23°02.456'E
Add 	Between the following positions:	(2) 60°03.653'N 23°02.681'E	
3	21, B639, B640, B641		(1) 60°03.837'N 23°02.254'E
Add 	Between the following positions:	(2) 60°03.785'N 23°02.441'E	
		(3) 60°03.847'N 23°02.554'E	
		(4) 60°03.853'N 23°02.760'E	
4	21, B639, B640, B641		(1) 60°03.837'N 23°02.254'E
Add 	Between the following positions:	(2) 60°03.857'N 23°02.375'E	

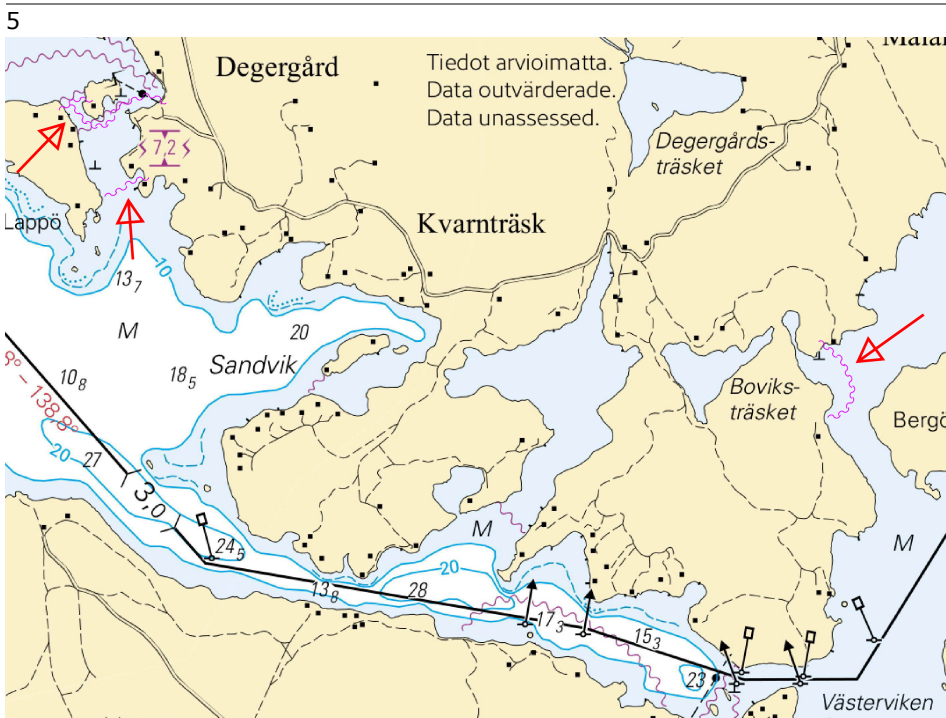


Image for reference, chart extracts not to scale of chart.

\*169/2023

2023-08-31

Finland. Gulf of Finland. Espoo. Miessaarenselkä. Depths

Charts

18	(INT 1250)
A627, A627.3	
B627, B627.3	

Previous

151/2023	<a href="#">↗</a>
151/2023	<a href="#">↗</a>
168/2023	<a href="#">↗</a>

---

1	Amend	<b>T</b>			18, A627, A627.3, B627, B627.3	60°08.540'N	24°46.390'E
<hr/>							
2	Delete	<i>1</i> <sub>7</sub>			A627.3, B627.3	60°08.55'N	24°46.04'E
<hr/>							
3	Delete	<i>1</i> <sub>7</sub>			18, A627, B627	60°08.554'N	24°45.959'E
<hr/>							
4	Delete	<i>3</i> <sub>4</sub>			A627.3, B627.3	60°08.60'N	24°45.98'E
<hr/>							
5	Add	<b>T</b>			18, A627, A627.3, B627, B627.3	60°08.546'N	24°46.070'E

(Traficom, Helsinki/Helsingfors 2023)

---

---

# Bothnian Sea

\*167(T)/2023

2023-08-29

Finland. Bothnian Sea. N of Åland. Geotechnical seabed surveys. Areas and borders

Charts		Previous
954	(INT 1210)	163/2023 <a href="#">↗</a>
955		128/2023 <a href="#">↗</a>
C/INDEX		133/2023 <a href="#">↗</a>

Time: from 9 September 2023 to approx. 9 November 2023

1

The vessel M/V Northern Storm is performing geotechnical seabed surveys N of Åland, in the areas as marked in the chartlets. The surveys are expected to be completed in November 2023. Weather conditions may alter the plans.

The vessel M/V Northern Storm: Call sign MISA7. MMSI: 232033527.

The vessel is monitoring VHF channel 16 and the other required VHF channels. Vessels are requested to give a wide berth. Safety zone: 500m.

Vessels navigating in the area are advised to reduce their speed and avoid creating undue wash in the vicinity of the work sites and the working vessel. The vessel may move in an unexpected manner during the survey operations. Mariners are requested to navigate with caution and to give way when meeting the survey vessel.

Fishermen are requested to mark their fishing tackles well, especially the fishing nets, so that mutual damage can be avoided.

2

954, 955, C/INDEX

Add

Seabed surveys in progress between the following positions:

(1)	60°38.00'N	19°18.97'E
(2)	60°44.32'N	19°20.44'E
(3)	60°48.11'N	19°53.53'E
(4)	60°46.45'N	20°08.09'E
(5)	60°43.65'N	20°01.51'E
(6)	60°41.41'N	19°35.08'E

3

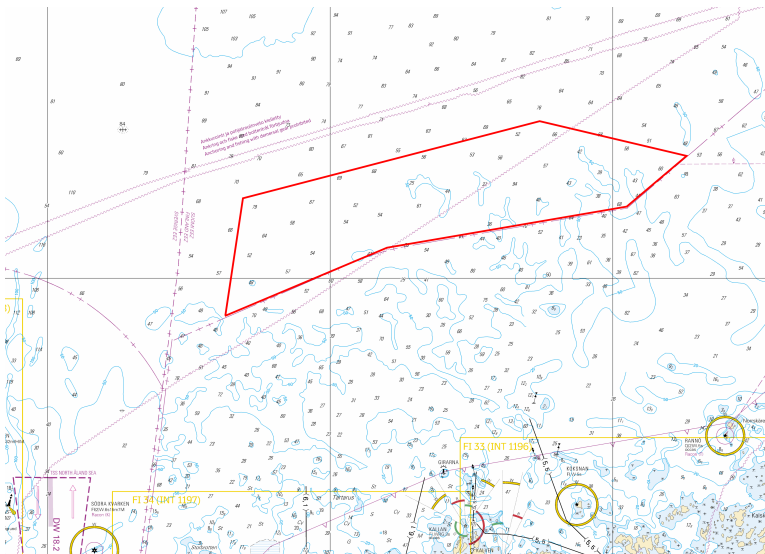


Image for reference, chart extracts not to scale of chart.

(Ilmatar Offshore AB, 2023)

# Bay of Bothnia


\*173/2023

2023-08-31




Finland. Bay of Bothnia. Kokkola. Varissaari. Depths

Charts		Previous
52	(INT 1143)	161/2023 <a href="#">↗</a>
117.A	(INT 11431)	179/2022 <a href="#">↗</a>
832, 832.B		161/2023 <a href="#">↗</a>
833, 833.C		161/2023 <a href="#">↗</a>

---

1  
Add  52, 117.A, 832, 832.B, 833, 833.C 63°50.580'N 22°59.500'E

---

2  
Amend    52, 117.A, 832, 832.B, 833, 833.C 63°50.639'N 22°59.625'E

(Traficom, Helsinki/Helsingfors 2023)

---

---

# Vuoksi watercourse

\*170/2023

2023-08-31

Finland. Vuoksi watercourse. Lappeenranta. Paarmala. Buoyage

## Charts

L201, L201.1

## Previous

154/2023 [↗](#)

---

1		L201, L201.1				
Amend			Front	61°07.318'N	28°16.624'E	13539
	RAUTIO Fl.Y.3s	RAUTIO Q				

---

2		L201, L201.1				
Amend			Rear	61°07.371'N	28°16.629'E	13540
	RAUTIO Fl.Y.3s	RAUTIO Fl.Y.6s				

(Traficom, Helsinki/Helsingfors 2023)

---

---

\*171/2023

2023-08-31

Finland. Vuoksi watercourse. Nilsjä. Hanhisalmi. Cables and pipelines

## Charts

482.1


M235

## Previous


293/2017 [↗](#)

90/2023 [↗](#)

---

1		482.1, M235				
Add		Between the following positions:	(1)	63°06.350'N	27°52.433'E	
			(2)	63°06.328'N	27°52.383'E	

---

2		482.1, M235				
Add				63°06.28'N	27°52.44'E	

(Savon Voima Verkko Oy, 2023)

---

---

# Paatsjoki watercourse

\*172/2023

2023-08-31

Finland. Paatsjoki watercourse. Ivalo. Jaarasaaret. Depths

**Charts**

480.2

**Previous**

/

---

1

480.2

Add

T

68°47.129'N

27°34.515'E

(Traficom, Helsinki/Helsingfors 2023)

---

---

# Current Preliminary (P) and Temporary (T) notices (31.08.2023)

## Gulf of Finland

T&P	Charts	Gulf of Finland
174(T)/2019 <a href="#">↗</a>	951	SE of Bol'soj Tjuters. Obstructions
296(T)/2020 <a href="#">↗</a>	17, 18, 191, 952, A, B	Helsinki. Sipoo. Areas and borders
19(T)/2021 <a href="#">↗</a>	951, A	NW of Gogland. Light Severnyj Virgin extinguished. Notice repeated. Buoyage
20(T)/2021 <a href="#">↗</a>	951, A	TSS OFF ROOSHER ISLAND. Lighthouse Rodser extinguished. Notice repeated. Buoyage
228(T)/2021 <a href="#">↗</a>	951, A	Krestovyj. Lighthouse Krestovyj extinguished. Notice repeated. Buoyage
296(T)/2021 <a href="#">↗</a>	18, 191, A, B	Kruunuvuori. Korkeasaari...Cultural Features. Vertical Clearances
303(T)/2021 <a href="#">↗</a>	18, 191, A, B	Helsinki. Hernesaari. Notice repeated. Buoyage
304(T)/2021 <a href="#">↗</a>	18, 192, A, B	Helsinki. Vuosaari. Notice repeated. Buoyage. Areas and borders
65(T)/2022 <a href="#">↗</a>	A, S	Vyborg. Destroyed leading beacon. Notice repeated. Buoyage
66(T)/2022 <a href="#">↗</a>	A, S	Vyborg. Light extinguished. Notice repeated. Buoyage
86(T)/2022 <a href="#">↗</a>	18, 191, 952, A, B	Helsinki. Kruunuvuori. Restrictions on small craft traffic. Fairways
90(T)/2022 <a href="#">↗</a>	951	Tiskolovo. Lighthouse Kajbolovo. Buoyage
196(T)/2022 <a href="#">↗</a>	951	Narva Bay. Areas and borders
226(T)/2022 <a href="#">↗</a>	18, 191, A, B	Helsinki. Sompasaari. Crown Bridges. Notice repeated. Buoyage
232(T)/2022 <a href="#">↗</a>	18, 191, A, B	Helsinki. Hernesaari. Notice repeated. Buoyage. Areas and borders
266(T)/2022 <a href="#">↗</a>	18, 191, A, B	Helsinki. Sompasaari...Notice repeated. Areas and borders
61(T)/2023 <a href="#">↗</a>	14, 138, A	Kotka. Mussalo harbour...Notice repeated. Areas and borders
84(T)/2023 <a href="#">↗</a>	19, 20, B	Ingå. Porkalafjärden. Edge mark Inkoo 6 inoperative. Buoyage

## Archipelago Sea

T&P	Charts	Archipelago Sea
107(T)/2021 <a href="#">↗</a>	26, 190, D	Naantali. Raumakari...Kirkonsalmi. Rafts with seal repellent systems. Buoyage
253(T)/2022 <a href="#">↗</a>	26, D	Pargas. Kirjala. Hessund. Bridge repair works. Areas and borders
15(T)/2023 <a href="#">↗</a>	27, 167, D	Pargas. S of Utö. Buoyage

## Aland Sea

T&P	Charts	Aland Sea
-	-	

## Bothnian Sea

T&P	Charts	Bothnian Sea
30(T)/2022 <a href="#">↗</a>	41, 127, E	Rauma. Ulko-Petäjäs. Areas and borders
148(T)/2022 <a href="#">↗</a>	956	Härnösand. Vårdkasberget. Maintenance of aids to navigation. Buoyage
160(T)/2022 <a href="#">↗</a>	41, 127, E	Rauma. Otanlahti. Flytande ö. Obstructions
1(T)/2023 <a href="#">↗</a>	42, 125, E	Pori. Tahkoluoto. Buoyage
104(T)/2023 <a href="#">↗</a>	955	Off Pori. ODAS buoys. Buoyage
108(T)/2023 <a href="#">↗</a>	40, 954, 955	Brändö. Kustavi. ODAS buoys. Buoyage
109(T)/2023 <a href="#">↗</a>	44, 813, 956, E	Kristinestad. Lighthouse Kristiinankaupungin majakka extinguished...Buoyage
127(T)/2023 <a href="#">↗</a>	41, 955, E	Uusikaupunki. Light Kajakulma extinguished. Buoyage
128(T)/2023 <a href="#">↗</a>	953, 954, 955, C	Saltvik. Brändö. Measuring equipment on seabed. Buoyage
167(T)/2023 <a href="#">↗</a>	954, 955, C	N of Åland. Geotechnical seabed surveys. Areas and borders

## The Quark

T&P	Charts	The Quark
238(T)/2022 <a href="#">↗</a>	48, 115, 921, F, M	Vaasa. Vaskiluoto. Notice repeated. Buoyage
57(T)/2023 <a href="#">↗</a>	957, F	S of Umeå. Light Fjärdgrund extinguished. Buoyage
110(T)/2023 <a href="#">↗</a>	48, 115, 820	Vaasa. Vaskiluoto. Dredging operations. Notice repeated. Areas and borders
126(T)/2023 <a href="#">↗</a>	48, 115, 820	Vaasa. Vaskiluoto. Dredging operations. Areas and borders
142(T)/2023 <a href="#">↗</a>	48, 115, 820, 956, 957, 8061, 8065	Vaasa. Vaskiluoto. Notice repeated. Buoyage. Fairways. Fairway areas
164(T)/2023 <a href="#">↗</a>	48, 115, 820	Vaasa. Vaskiluoto. Buoyage

## Bay of Bothnia

T&P	Charts	Bay of Bothnia
47(T)/2023 <a href="#">↗</a>	57, 119, 845, 846	Port of Oulu. ( N2000 ) (BSCD2000)...Depths. Fairways. Fairway areas
102(T)/2023 <a href="#">↗</a>	57, 847	Oulu. Luodematalat. Buoyage
103(T)/2023 <a href="#">↗</a>	59, 60, 854, 958	Channel to Kemi. Port of Kemi. Dredging operations. Areas and borders
148(T)/2023 <a href="#">↗</a>	57, 847	Off Oulu. Maintenance of aids to navigation. Buoyage

## Vuoksi watercourse

T&P	Charts	Vuoksi watercourse
268(T)/2019 <a href="#">↗</a>	M	Kuopio. Kotkatniemi. Buoyage
214(T)/2020 <a href="#">↗</a>		Leppävirta. Hyvärilä. Buoyage
90(T)/2023 <a href="#">↗</a>	921, M	Kuopio. Light Sotkanselkä operational. Notice repeated. Buoyage

## Kymijoki watercourse

T&P	Charts	Kymijoki watercourse
-	-	

## Kokemäijoki watercourse

T&P	Charts	Kokemäijoki watercourse
-	-	

## Oulujoki watercourse

T&P	Charts	Oulujoki watercourse
-	-	

## Paatsjoki watercourse

T&P	Charts	Paatsjoki watercourse
-	-	

## Saimaa Canal

T&P	Charts	Saimaa Canal
-	-	

## Northern Baltic

T&P	Charts	Northern Baltic
-	-	

## Announcements

T&P	Charts	Announcements
291(T)/2022 <a href="#">↗</a>		Bay of Bothnia. Off Oulu. V-AIS. Notice repeated.
99(T)/2023 <a href="#">↗</a>		Off Merikarvia. Hydrographic surveying in progress.
137(T)/2023 <a href="#">↗</a>		Helsinki. Korkeasaari...Restrictions on small craft traffic