



# Notices to Mariners

## NtM 27/2023

Notices: 190 - 192 / 30.09.2023



# Table of Contents

Title	Page
Index by Area	2
Index by Chart	3
Bay of Bothnia	4
Kokemäkijoki watercourse	5
Paatsjoki watercourse	6
Current Preliminary (P) and Temporary (T) notices (28.09.2023)	7

# Index by Area

## Bay of Bothnia

### Charts

\*191/2023

57, 847

## Kokemäijoki watercourse

### Charts

\*190/2023

N

## Paatsjoki watercourse

### Charts

\*192/2023

480

# Index by Chart

<b>Charts</b>	<b>Notices</b>
57	*191/2023
480	*192/2023
847	*191/2023
N	*190/2023

# Bay of Bothnia

\*191/2023

2023-09-28

Finland. Bay of Bothnia. Off Oulu. Edge mark Kriisinkivi operational.  
Buoyage

Charts		Previous
57	(INT 1148)	148/2023 <a href="#">↗</a>
847		148/2023 <a href="#">↗</a>

Cancelled: 148(T)/2023 [↗](#)

---

1

Amend   

KRIISINKIVI KRIISINKIVI

57, 847

65°12.689'N 25°04.004'E 11133, (C4105.5)

(Traficom, Helsinki/Helsingfors 2023)

---

---

# Kokemäkijoki watercourse

\*190/2023

2023-09-28

Finland. Kokemäkijoki watercourse. Tampere. Näsijärvi. Lielahdi. Cables and pipelines

## Charts

N501.1

## Previous

156/2023 [↗](#)

1

N501.1

Add 

Between the following positions:

- |     |             |             |
|-----|-------------|-------------|
| (1) | 61°30.685'N | 23°41.284'E |
| (2) | 61°30.745'N | 23°41.297'E |
| (3) | 61°30.791'N | 23°41.385'E |
| (4) | 61°30.826'N | 23°41.616'E |
| (5) | 61°30.792'N | 23°41.881'E |

2

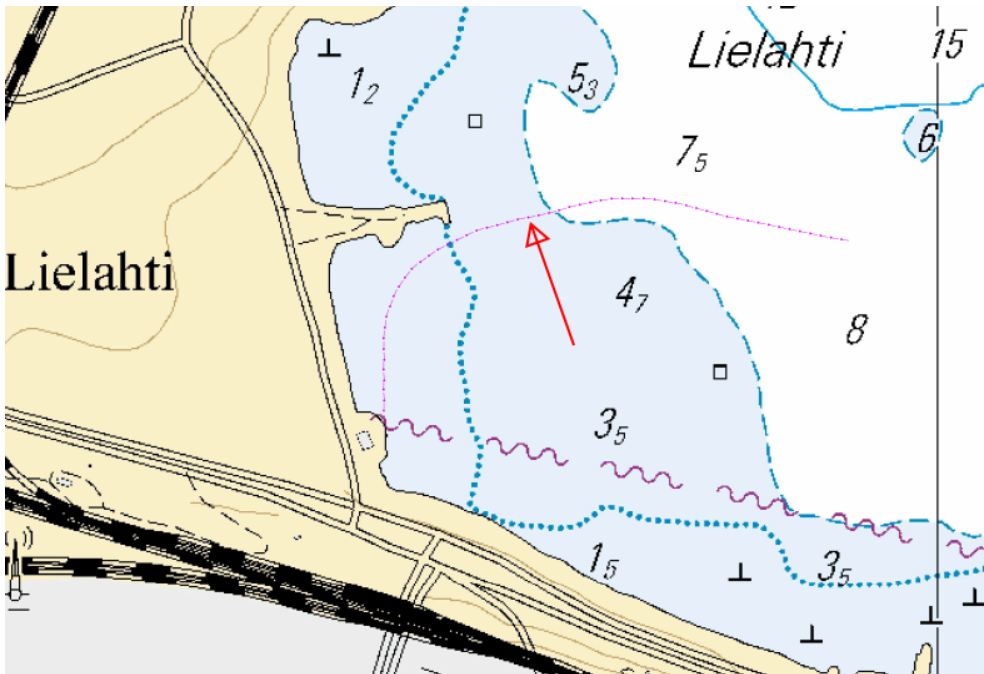


Image for reference, chart extracts not to scale of chart.

(Tampereen kaupunki, Tammerfors stad 2023)

# Paatsjoki watercourse

\*192/2023

2023-09-28

Finland. Paatsjoki watercourse. Ivalo. Jaarasaaret. Buoyage. Fairways

## Charts


480.2

## Previous

172/2023 [↗](#)

References: 172/2023 [↗](#)

---

1	480.2			
Add			68°47.129'N	27°34.512'E
<hr/>				
2	480.2			
Add	— <1,5> —	Between the following positions:	(1) 68°47.110'N	27°34.568'E
		Delete former centre line	(2) 68°47.113'N	27°34.527'E
			(3) 68°47.210'N	27°34.319'E

---

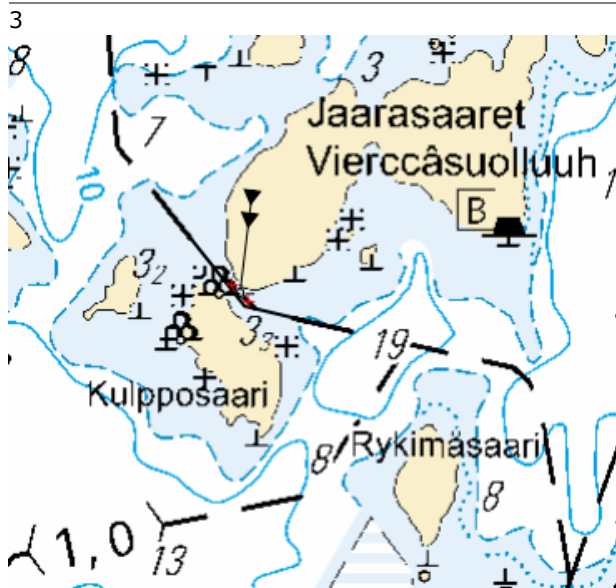


Image for reference, chart extracts not to scale of chart.

(Traficom, Helsinki/Helsingfors 2023)

---

---

# Current Preliminary (P) and Temporary (T) notices (28.09.2023)

## Gulf of Finland

T&P	Charts	Gulf of Finland
174(T)/2019 <a href="#">↗</a>	951	SE of Bol'soj Tjuters. Obstructions
296(T)/2020 <a href="#">↗</a>	17, 18, 191, 952, A, B	Helsinki. Sipoo. Areas and borders
19(T)/2021 <a href="#">↗</a>	951, A	NW of Gogland. Light Severnyj Virgin extinguished. Notice repeated. Buoyage
20(T)/2021 <a href="#">↗</a>	951, A	TSS OFF ROOSHER ISLAND. Lighthouse Rodser extinguished. Notice repeated. Buoyage
228(T)/2021 <a href="#">↗</a>	951, A	Krestovyj. Lighthouse Krestovyj extinguished. Notice repeated. Buoyage
296(T)/2021 <a href="#">↗</a>	18, 191, A, B	Kruunuvuori. Korkeasaari...Cultural Features. Vertical Clearances
303(T)/2021 <a href="#">↗</a>	18, 191, A, B	Helsinki. Hernesaari. Notice repeated. Buoyage
304(T)/2021 <a href="#">↗</a>	18, 192, A, B	Helsinki. Vuosaari. Notice repeated. Buoyage. Areas and borders
65(T)/2022 <a href="#">↗</a>	A, S	Vyborg. Destroyed leading beacon. Notice repeated. Buoyage
66(T)/2022 <a href="#">↗</a>	A, S	Vyborg. Light extinguished. Notice repeated. Buoyage
86(T)/2022 <a href="#">↗</a>	18, 191, 952, A, B	Helsinki. Kruunuvuori. Restrictions on small craft traffic. Fairways
90(T)/2022 <a href="#">↗</a>	951	Tiskolovo. Lighthouse Kajbolovo. Buoyage
196(T)/2022 <a href="#">↗</a>	951	Narva Bay. Areas and borders
226(T)/2022 <a href="#">↗</a>	18, 191, A, B	Helsinki. Sompasaari. Crown Bridges. Notice repeated. Buoyage
232(T)/2022 <a href="#">↗</a>	18, 191, A, B	Helsinki. Hernesaari. Notice repeated. Buoyage. Areas and borders
266(T)/2022 <a href="#">↗</a>	18, 191, A, B	Helsinki. Sompasaari...Notice repeated. Areas and borders
61(T)/2023 <a href="#">↗</a>	14, 138, A	Kotka. Mussalo harbour...Notice repeated. Areas and borders
84(T)/2023 <a href="#">↗</a>	19, 20, B	Ingå. Porkalafjärden. Edge mark Inkoo 6 inoperative. Buoyage

## Archipelago Sea

T&P	Charts	Archipelago Sea
107(T)/2021 <a href="#">↗</a>	26, 190, D	Naantali. Raumakari...Kirkonsalmi. Rafts with seal repellent systems. Buoyage
15(T)/2023 <a href="#">↗</a>	27, 167, D	Pargas. S of Utö. Buoyage
188(T)/2023 <a href="#">↗</a>	26, D	Pargas. Hessund...Restrictions on small craft traffic. Areas and borders
189(T)/2023 <a href="#">↗</a>	26, D	Pargas. Kirjala...Restrictions on traffic. Areas and borders

## Aland Sea

T&P	Charts	Aland Sea
-	-	

## Bothnian Sea

T&P	Charts	Bothnian Sea
30(T)/2022 <a href="#">↗</a>	41, 127, E	Rauma. Ulko-Petäjäs. Areas and borders
148(T)/2022 <a href="#">↗</a>	956	Härnösand. Vårdkasberget. Maintenance of aids to navigation. Buoyage
160(T)/2022 <a href="#">↗</a>	41, 127, E	Rauma. Otanlahti. Flytande ö. Obstructions
1(T)/2023 <a href="#">↗</a>	42, 125, E	Pori. Tahkoluoto. Buoyage
104(T)/2023 <a href="#">↗</a>	955	Off Pori. ODAS buoys. Buoyage
108(T)/2023 <a href="#">↗</a>	40, 954, 955	Brändö. Kustavi. ODAS buoys. Buoyage
109(T)/2023 <a href="#">↗</a>	44, 813, 956, E	Kristinestad. Lighthouse Kristiinankaupungin majakka extinguished...Buoyage
128(T)/2023 <a href="#">↗</a>	953, 954, 955, C	Saltvik. Brändö. Measuring equipment on seabed. Buoyage
167(T)/2023 <a href="#">↗</a>	954, 955, C	N of Åland. Geotechnical seabed surveys. Areas and borders

## The Quark

T&P	Charts	The Quark
238(T)/2022 <a href="#">↗</a>	48, 115, 921, F, M	Vaasa. Vaskiluoto. Notice repeated. Buoyage
57(T)/2023 <a href="#">↗</a>	957, F	S of Umeå. Light Fjärdgrund extinguished. Buoyage
110(T)/2023 <a href="#">↗</a>	48, 115, 820	Vaasa. Vaskiluoto. Dredging operations. Notice repeated. Areas and borders
126(T)/2023 <a href="#">↗</a>	48, 115, 820	Vaasa. Vaskiluoto. Dredging operations. Areas and borders
142(T)/2023 <a href="#">↗</a>	48, 115, 820, 956, 957, 8061, 8065	Vaasa. Vaskiluoto. Notice repeated. Buoyage. Fairways. Fairway areas
164(T)/2023 <a href="#">↗</a>	48, 115, 820	Vaasa. Vaskiluoto. Buoyage
182(T)/2023 <a href="#">↗</a>	48, 115, 820	Vaasa. Geotechnical seabed surveys. Areas and borders

## Bay of Bothnia

T&P	Charts	Bay of Bothnia
47(T)/2023 <a href="#">↗</a>	57, 119, 845, 846	Port of Oulu. ( N2000 ) (BSCD2000)...Depths. Fairways. Fairway areas
102(T)/2023 <a href="#">↗</a>	57, 847	Oulu. Luodematalat. Buoyage
103(T)/2023 <a href="#">↗</a>	59, 60, 854, 958	Channel to Kemi. Port of Kemi. Dredging operations. Areas and borders

## Vuoksi watercourse

T&P	Charts	Vuoksi watercourse
268(T)/2019 <a href="#">↗</a>	M	Kuopio. Kotkatniemi. Buoyage
214(T)/2020 <a href="#">↗</a>		Leppävirta. Hyvärilä. Buoyage
90(T)/2023 <a href="#">↗</a>	921, M	Kuopio. Light Sotkanselkä operational. Notice repeated. Buoyage

## Kymijoki watercourse

T&P	Charts	Kymijoki watercourse
-	-	

## Kokemäijoki watercourse

T&P	Charts	Kokemäijoki watercourse
-	-	

## Oulujoki watercourse

T&P	Charts	Oulujoki watercourse
-	-	

## Paatsjoki watercourse

T&P	Charts	Paatsjoki watercourse
-	-	

## Saimaa Canal

T&P	Charts	Saimaa Canal
-	-	

## Northern Baltic

T&P	Charts	Northern Baltic
-	-	

## Announcements

T&P	Charts	Announcements
291(T)/2022 <a href="#">↗</a>		Bay of Bothnia. Off Oulu. V-AIS. Notice repeated.
99(T)/2023 <a href="#">↗</a>		Off Merikarvia. Hydrographic surveying in progress.
137(T)/2023 <a href="#">↗</a>		Helsinki. Korkeasaari...Restrictions on small craft traffic