



Notices to Mariners

NtM 30/2023

Notices: 202 - 212 / 31.10.2023



Table of Contents

Title	Page
Index by Area	2
Index by Chart	3
Gulf of Finland	4
Archipelago Sea	7
The Quark	9
Bay of Bothnia	10
Announcements	17
Current Preliminary (P) and Temporary (T) notices (31.10.2023)	22

Index by Area

Gulf of Finland

Charts

*202/2023	22, 136, B
*203/2023	18, 191, A, B
*204/2023	18, 191, A, B

Archipelago Sea

Charts

*206/2023	26, D
*207/2023	26, D

The Quark

Charts

*208/2023	48, 820
-----------	---------

Bay of Bothnia

Charts

*209/2023	852, 853, 854, 8071
*210/2023	852, 854

Announcements

Charts

*205/2023
*211/2023
*212/2023

Index by Chart

Charts	Notices
18	*203/2023, *204/2023
22	*202/2023
26	*206/2023, *207/2023
48	*208/2023
136	*202/2023
191	*203/2023, *204/2023
820	*208/2023
852	*209/2023, *210/2023
853	*209/2023
854	*209/2023, *210/2023
8071	*209/2023
A	*203/2023, *204/2023
B	*202/2023, *203/2023, *204/2023
D	*206/2023, *207/2023




Gulf of Finland

*202/2023

2023-10-31

Finland. Gulf of Finland. Off Hanko. Smörsten. Buoyage

Charts		Previous
22	(INT 1254)	158/2023 ↗
136	(INT 1154)	158/2023 ↗
B637, B637.1, B638		199/2023 ↗

1		22, 136, B637, B637.1, B638			
Amend				59°49.459'N 22°51.388'E	22789

(Traficom, Helsinki/Helsingfors 2023)

*203/2023


2023-10-31


Finland. Gulf of Finland. Helsinki. Sompasaari. Crown Bridges. Notice repeated. Buoyage


Charts		Previous
18	(INT 1250)	169/2023 ↗
191	(INT 1159)	151/2023 ↗
A626		198/2023 ↗
B626		202/2023 ↗


Time: until about 31 March 2024


Cancelled: 226(T)/2022 [↗](#)


1		18, 191, A626, B626			
Add				60°10.727'N 24°58.716'E	87046

2		18, 191, A626, B626			
Add				60°10.715'N 24°58.802'E	87047

3		18, 191, A626, B626			
Add				60°10.702'N 24°58.889'E	87048

4		18, 191, A626, B626			
Add				60°10.690'N 24°58.975'E	87049

5 Add  18, 191, A626, B626 60°10.590'N 24°58.603'E 87050

6 Add  18, 191, A626, B626 60°10.576'N 24°58.685'E 87051


7 Add  18, 191, A626, B626 60°10.563'N 24°58.768'E 87052



Image for reference, chart extracts not to scale of chart.

(Helsingin kaupunki, Helsingfors stad 2023)

*204/2023

2023-10-31

Finland. Gulf of Finland. Helsinki. Sompasaari. Buoyage

Charts		Previous
18	(INT 1250)	203/2023 ↗
191	(INT 1159)	203/2023 ↗
A626		203/2023 ↗
B626		203/2023 ↗

References: [151/2023](#) [↗](#)

1	18, 191, A626, B626	60°10.645'N	24°58.716'E	52392
Delete				

(Traficom, Helsinki/Helsingfors 2023)

Archipelago Sea

*206/2023

2023-10-31

Finland. Archipelago Sea. Pargas. Hessund. Buoyage

Charts

26

(INT 1189)

Previous

189/2023 [↗](#)

D705

189/2023 [↗](#)

References:188(T)/2023 [↗](#)

1

Bridge repair work underway in Hessund Bridge. The channel (4.3m) under the bridge is closed during the construction period.

2

26, D705

Delete



60°19.409'N

22°20.628'E

4185

3

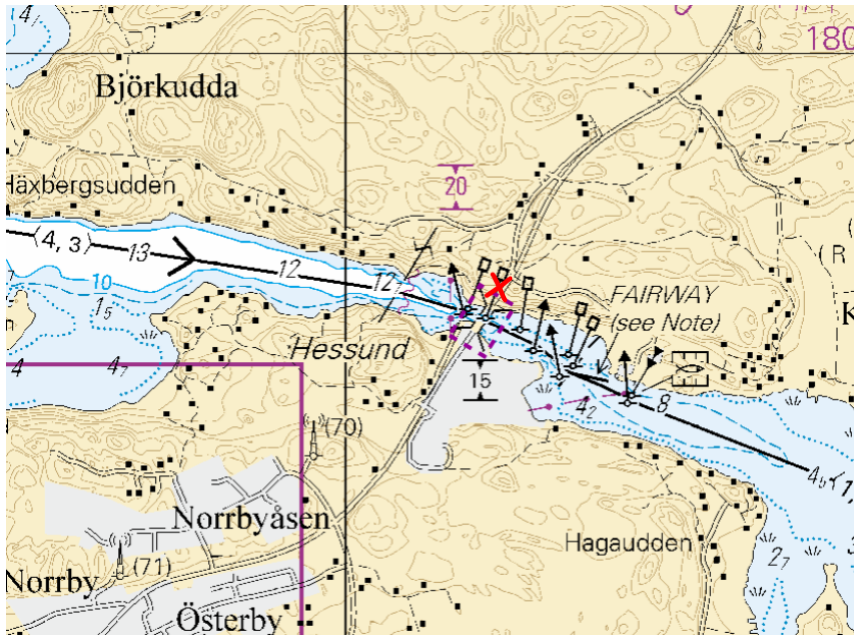


Image for reference, chart extracts not to scale of chart.

(Traficom, Helsinki/Helsingfors 2023)

*207/2023

2023-10-31

Finland. Archipelago Sea. Pargas. Kirjala. Buoyage

Charts

26

(INT 1189)

Previous

206/2023 [↗](#)

D705

206/2023 [↗](#)

References: [135/2023 ↗](#), [189\(T\)/2023 ↗](#)

1

Bridge construction work underway in Kirjala Bridge. The channel (3.6m) under the bridge is closed during the construction period.

2

26, D705

Delete 

60°21.973'N

22°21.597'E

88524

3

26, D705

Delete 

60°21.957'N

22°21.541'E

88525

4

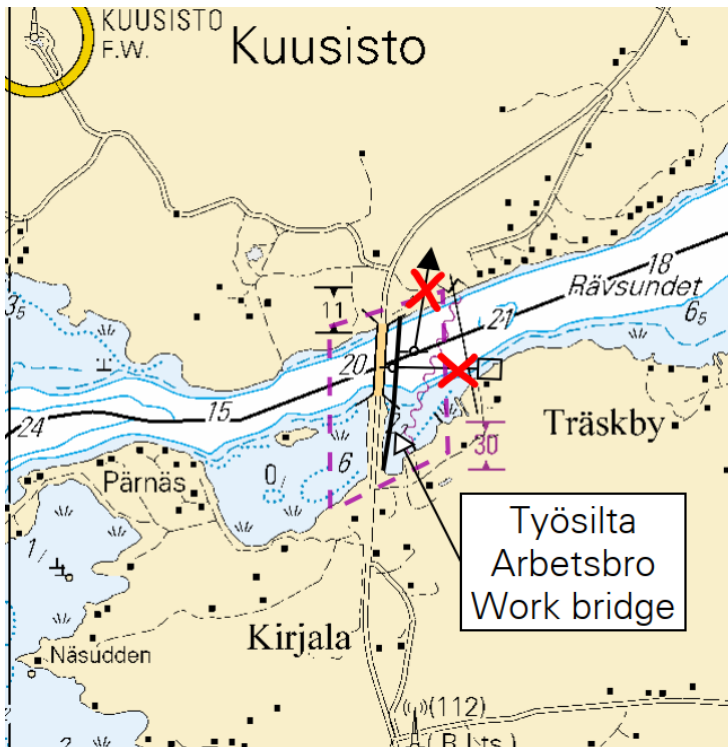


Image for reference, chart extracts not to scale of chart.

(Traficom, Helsinki/Helsingfors 2023)

The Quark

*208/2023

2023-10-31

Finland. The Quark. Vaasa. Ytterstbådarna. Depths

Charts

48

(INT 1139)

820

Previous

182/2023 [↗](#)

182/2023 [↗](#)

1

Amend

14₁



13_g

48, 820

63°08.11'N

21°20.20'E

(Traficom, Helsinki/Helsingfors 2023)

Bay of Bothnia

*209/2023

2023-10-31

Finland. Bay of Bothnia. Kemi. Ajos. Depths. Buoyage. Fairways. Fairway areas. Areas and borders

Charts	Previous
852	162/2023 ↗
853	/
854, 854.A	162/2023 ↗
8071/INDEX	162/2023 ↗

References:162/2023 [↗](#)

Cancelled: 103(T)/2023 [↗](#), 139/2023 [↗](#)


1

The amendments of the channel to Kemi Ajos will be introduced on 31 October 2023. These amendments will be included in the new editions of charts 58, 59, 60 and 958. The charts has been published in 31 October 2023.

2 852

Amend 11,8m  14,8m 65°28.50'N 24°17.90'E

3 852

Amend 11,8m  14,8m 65°31.90'N 24°24.67'E

4 852

Amend 11,8m  14,8m 65°33.55'N 24°27.18'E

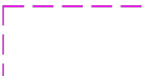
5 854

Amend 11,8m  14,8m 65°35.10'N 24°27.70'E

6 854

Amend 11,8m  14,8m 65°37.13'N 24°29.07'E

7 854

Add  Between the following positions: (1) 65°37.456'N 24°29.205'E (2) 65°37.431'N 24°29.453'E

8 854

Add 14m 65°37.64'N 24°29.38'E

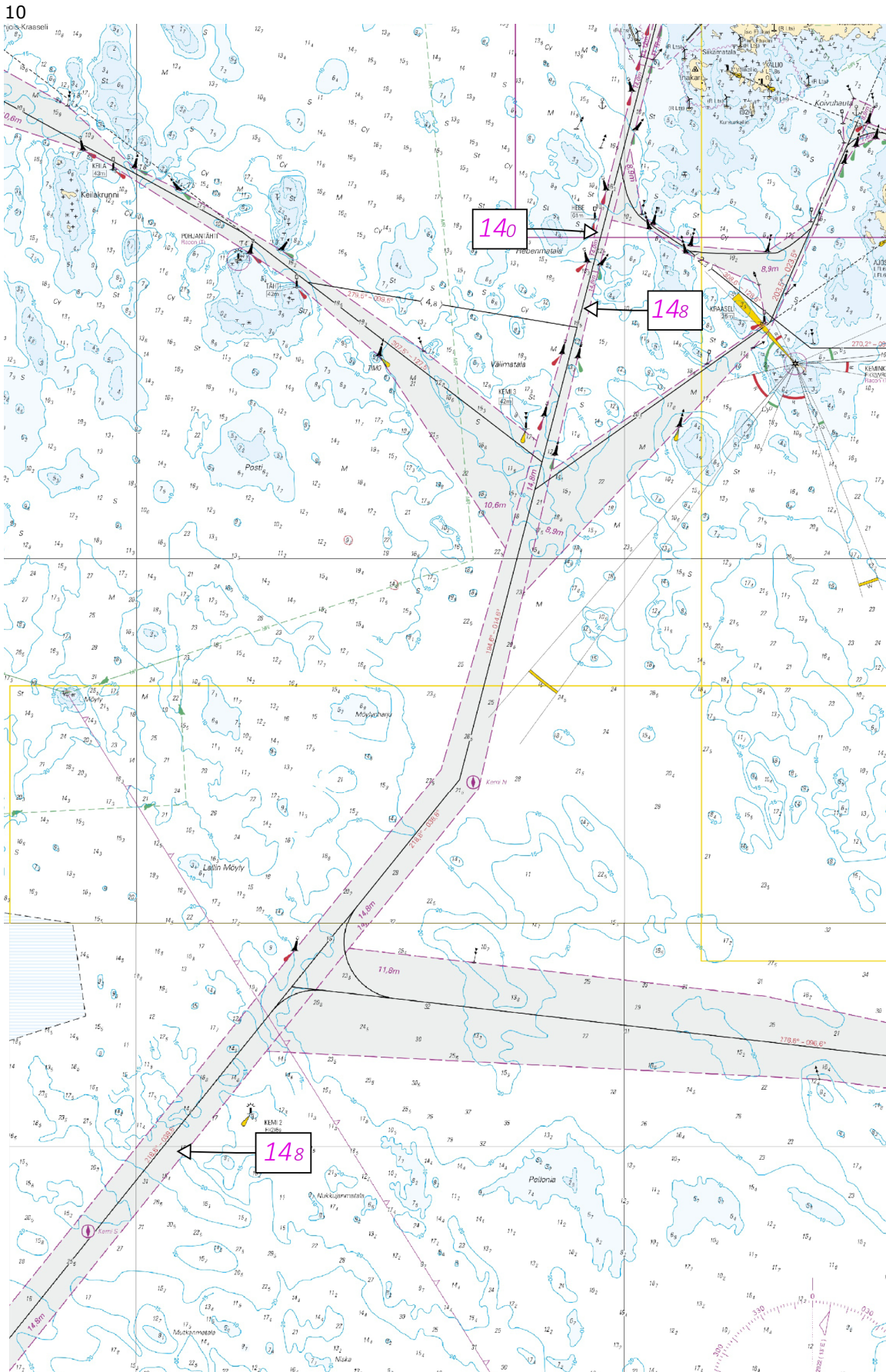





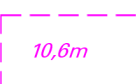




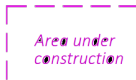


Image for reference, chart extracts not to scale of chart.

11	854, 854.A, 8071/INDEX		(1) 65°39.242'N	24°30.467'E
Delete	Between the following positions:		(2) 65°39.546'N	24°30.660'E
			(3) 65°39.772'N	24°31.148'E
12	854, 854.A, 8071/INDEX		(1) 65°39.546'N	24°30.660'E
Delete	Between the following positions:		(2) 65°39.609'N	24°30.698'E
			(3) 65°39.923'N	24°30.694'E
			(4) 65°40.062'N	24°30.890'E
13	854, 854.A, 8071/INDEX		(1) 65°39.923'N	24°30.694'E
Delete	Between the following positions:		(2) 65°39.971'N	24°30.893'E
14	854, 854.A, 8071/INDEX		(1) 65°39.609'N	24°30.698'E
Delete	Between the following positions:		(2) 65°39.772'N	24°30.800'E
			(3) 65°39.879'N	24°31.013'E
15	854, 854.A, 8071/INDEX		(1) 65°39.772'N	24°30.800'E
Delete	Between the following positions:		(2) 65°39.844'N	24°31.052'E
16	854, 854.A, 8071/INDEX		(1) 65°39.575'N	24°30.676'E
Delete	Between the following positions:		(2) 65°40.111'N	24°30.517'E
17	854, 854.A, 8071/INDEX		(1) 65°39.580'N	24°30.730'E
Delete	Between the following positions:		(2) 65°39.586'N	24°30.861'E
18	854, 854.A		(1) 65°39.256'N	24°30.340'E
Add	Between the following positions:		(2) 65°39.228'N	24°30.593'E
	Delete former edge line		(3) 65°39.539'N	24°30.789'E
			(4) 65°39.573'N	24°30.818'E
			(5) 65°39.610'N	24°30.916'E
			(6) 65°39.616'N	24°30.982'E
			(7) 65°39.618'N	24°31.006'E
			(8) 65°39.802'N	24°31.400'E
			(9) 65°39.823'N	24°31.341'E
			(10) 65°39.764'N	24°31.120'E
			(11) 65°39.747'N	24°31.055'E
			(12) 65°39.786'N	24°30.950'E
			(13) 65°39.816'N	24°30.800'E
			(14) 65°39.797'N	24°30.499'E
			(15) 65°39.551'N	24°30.528'E
			(16) 65°39.256'N	24°30.340'E

19		854, 854.A			
Add		Between the following positions:	(1)	65°39.919'N	24°30.784'E
		Delete former edge line	(2)	65°39.932'N	24°30.820'E
			(3)	65°39.996'N	24°30.993'E
			(4)	65°40.009'N	24°30.966'E
			(5)	65°40.028'N	24°30.969'E
			(6)	65°40.038'N	24°30.999'E
			(7)	65°40.159'N	24°30.747'E
			(8)	65°39.797'N	24°30.499'E
			(9)	65°39.816'N	24°30.800'E
			(10)	65°39.863'N	24°30.773'E
			(11)	65°39.919'N	24°30.784'E
20		854, 854.A			
Add		Between the following positions:	(1)	65°39.872'N	24°30.550'E
		Delete former edge line	(2)	65°40.159'N	24°30.747'E
			(3)	65°40.061'N	24°30.479'E
			(4)	65°39.872'N	24°30.550'E
21		854, 854.A			
Add		Between the following positions:	(1)	65°40.061'N	24°30.479'E
		Delete former edge line	(2)	65°40.159'N	24°30.747'E
			(3)	65°40.179'N	24°30.703'E
			(4)	65°40.092'N	24°30.467'E
			(5)	65°40.061'N	24°30.479'E
22		854, 854.A			
Add		Between the following positions:	(1)	65°39.812'N	24°30.822'E
		Delete former edge line	(2)	65°39.786'N	24°30.950'E
			(3)	65°39.881'N	24°31.150'E
			(4)	65°39.913'N	24°31.097'E
			(5)	65°39.812'N	24°30.822'E
23		854, 854.A			
Add		Between the following positions:	(1)	65°39.815'N	24°31.309'E
		Delete former edge line	(2)	65°39.819'N	24°31.295'E
			(3)	65°39.815'N	24°31.285'E
			(4)	65°39.825'N	24°31.255'E
			(5)	65°39.768'N	24°31.135'E
			(6)	65°39.815'N	24°31.309'E
24		854, 854.A			
Add		Between the following positions:	(1)	65°39.768'N	24°31.132'E
		Delete former edge line	(2)	65°39.825'N	24°31.255'E
			(3)	65°39.815'N	24°31.285'E
			(4)	65°39.819'N	24°31.295'E
			(5)	65°39.833'N	24°31.259'E
			(6)	65°39.769'N	24°31.123'E
			(7)	65°39.767'N	24°31.114'E
			(8)	65°39.764'N	24°31.120'E
			(9)	65°39.768'N	24°31.132'E

25		854, 854.A			
Add		Between the following positions:	(1)	65°39.767'N	24°31.114'E
			(2)	65°39.747'N	24°31.055'E
			(3)	65°39.764'N	24°31.120'E
		Delete former edge line	(4)	65°39.767'N	24°31.114'E
26		854, 854.A			
Add		Between the following positions:	(1)	65°39.616'N	24°30.982'E
			(2)	65°39.610'N	24°30.916'E
			(3)	65°39.573'N	24°30.818'E
		Delete former edge line	(4)	65°39.539'N	24°30.789'E
			(5)	65°39.558'N	24°30.829'E
			(6)	65°39.616'N	24°30.982'E
27		854, 854.A			
Delete				65°39.755'N	24°31.278'E
					30074
28		854, 854.A			
Move		Tarkistettu sijainti	From	65°39.820'N	24°30.821'E
			To	65°39.816'N	24°30.800'E
					87013
29		853, 854, 854.A			
Delete		Between the following positions: (NtM 33/308/2021, item 31)	(1)	65°39.15'N	24°30.78'E
			(2)	65°39.19'N	24°30.29'E
			(3)	65°39.52'N	24°29.85'E
			(4)	65°39.84'N	24°29.89'E
			(5)	65°40.07'N	24°30.10'E
			(6)	65°40.24'N	24°30.80'E
			(7)	65°39.64'N	24°32.09'E
			(8)	65°39.15'N	24°30.78'E
30		Amended shoreline. See image.			

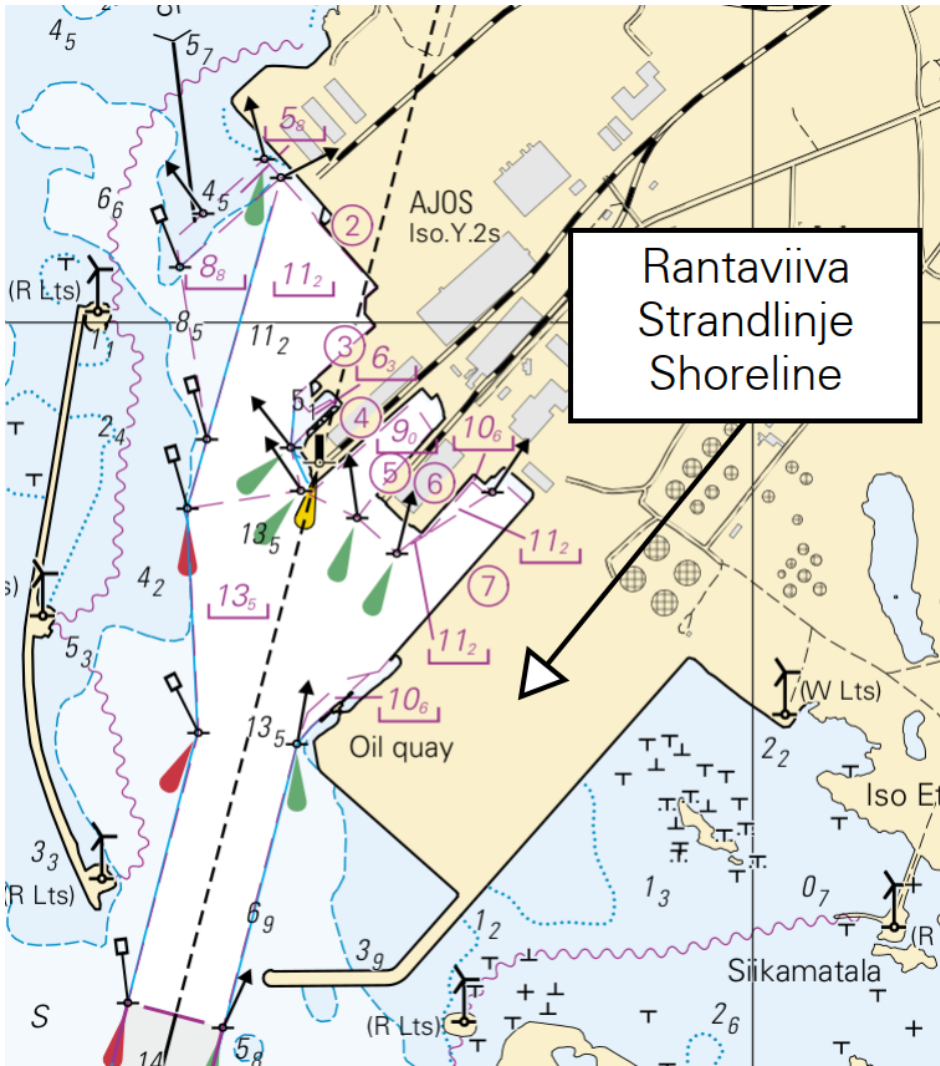


Image for reference, chart extracts not to scale of chart.

(Traficom, Helsinki/Helsingfors 2023)

***210/2023** *2023-10-31*
Finland. Bay of Bothnia. Off Kemi. Depths

Charts

852
 854, 854.A

Previous

209/2023 [↗](#)
 209/2023 [↗](#)

1
 The amendments of the channel to Kemi Ajos will be introduced on 31 October 2023. These amendments will be included in the new editions of charts 58, 59, 60 and 958. The charts has been published in 27 October 2023.

2 852
 Amend *14₄* [➔](#) *14₈* 65°30.830'N 24°21.980'E

3 854
 Amend *12₃* [➔](#) *14₈* 65°35.902'N 24°28.501'E

4	Amend	13 ₃	→	14 ₈	854	65°36.621'N	24°28.903'E
5	Amend	13 ₅	→	14 ₈	854	65°36.835'N	24°29.051'E
6	Amend	12 ₃	→	14 ₈	854	65°37.606'N	24°29.518'E
7	Amend	13 ₇	→	14 ₈	854.A	65°37.820'N	24°29.556'E
8	Amend	11 ₅	→	14 ₈	854.A	65°39.191'N	24°30.395'E
9	Amend	11 ₇	→	14 ₈	854.A	65°39.554'N	24°30.702'E
10	Delete	11 ₂			854	65°39.770'N	24°30.686'E
11	Amend	11 ₂	→	13 ₅	854.A	65°39.770'N	24°30.686'E

(Traficom, Helsinki/Helsingfors 2023)

Announcements

*205/2023

2023-10-31

Finland. Gulf of Finland. Changes to Turku Radio VHF channels.

Charts

Previous

1

A Turku Radio VHF channel in Virolahti will be changed on 20 November 2023 at 09:00 UTC. The new VHF channel is the following:

VIROLAHTI

Old VHF channel 79

New VHF channel 83

There will be no changes to the VHF channels at other base stations.

Further information:

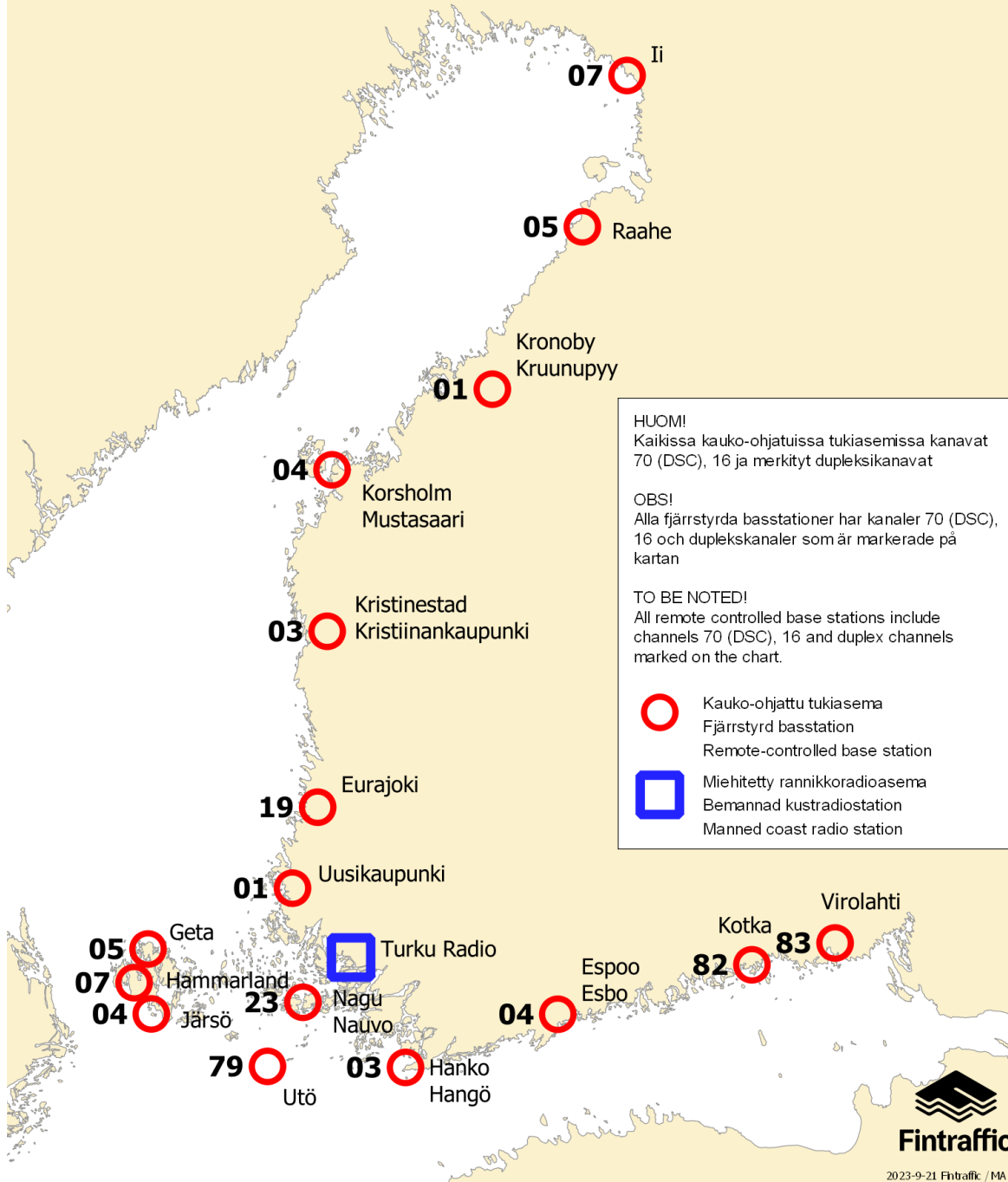
Henri Selin, Senior Specialist, Fintraffic VTS, henri.selin@fintraffic.fi

<https://www.fintraffic.fi/en/vts/maritime-safety-radio>

Turku Radion työskentelykanavat radiopuhelinliikenteessä

Turku Radios arbetskanaler för radiotelefon

Working channels of Turku Radio for voice communication



(Fintraffic, 2023)

*211/2023

2023-10-31

Finland. New chart editions. (N2000) (BSCD2000).

[Charts](#)

[Previous](#)

References:113/2023 [↗](#)

1

Nimi	Nro	INT	Mittakaava	Painos	Oikaisupäivämäärä	Myyntipäivämäärä
Namn	Nr		Skala	Upplaga	Rättelsedatum	Utgivningsdatum
Name	No.		Scale	Edition	Correction date	Release date
Ulkokrunni	58	1149	1:50 000	6 New Edition	31.10.2023	31.10.2023
Kemi – Tornio, Torneå	59	1150	1:50 000	7 New Edition	31.10.2023	31.10.2023
Oulunportti - Kemi 1	60	1152	1:50 000	5 New Edition	31.10.2023	31.10.2023
Perämeri, Bottenviken	958	1209	1:250 000	6 New Edition	31.10.2023	31.10.2023

(Traficom, Helsinki/Helsingfors 2023)

*212/2023

2023-10-31

Finland. New depth reference level N2000 (BSCD2000) for charts.

[Charts](#)

[Previous](#)

References:114/2023 [↗](#)

1

New depth reference level N2000 (BSCD2000) for charts

Finnish nautical charts and fairways are currently in the process of switching over to a new harmonised reference level for depth information that is tied to the national N2000 height system. The current reference level for depth information in sea areas is based on mean water level, and it will be replaced with a reference level that is tied to the N2000 vertical coordinate reference system.

The N2000 fairway and nautical chart reform is part of the Baltic Sea countries' joint project BSCD2000 (Baltic Sea Chart Datum 2000). The purpose of the project is to harmonise the interpretation of nautical chart data and available water depth in the Baltic Sea region. The migration to the new depth information reference level will affect the depth and fairway information presented on nautical charts. The changes to the information are caused by the difference between current reference levels and the zero position used in the N2000 system. Picture 3.

Integrated reference level

N2000 chart products present depth and fairway information using the N2000 height system that is tied to the Earth's crust instead of the mean sea level MSL (Mean Sea Level) / MW (Mean Water) in sea areas. When using the theoretical mean sea level, the zero level is equal to the average water level in the year in question, which means that the zero level has changed some millimetres each year. N2000 chart products present depth and fairway information using the N2000 height system that is tied to the Earth's crust without being influenced by the effects of the land uplift or sea level changes. Because the zero level in the N2000 system is below the current mean sea level (MSL), the depths on charts will, depending on the area, decrease by approximately 10–20 cm due to the reference level, and the prevailing water level will increase correspondingly. The available water depth does not change when sea level data in the N2000 format is taken into account. Picture 4.

The importance of water level in relation to the depth available will be accentuated. The Finnish Meteorological Institute has since September 2021 published its sea level observations and forecasts in the N2000 format as well as in relation to the theoretical mean sea level. The data is available on the Institute's website (<https://en.ilmatieteenlaitos.fi/sea-level>).

During the transition period, charts in accordance with both the old and the new system will be used. Therefore, it is important to check the reference level of the chart used and the corresponding water level reading. The list of nautical chart products always provides up-to-date information on the valid edition of the charts and the reference level used therein.

List of nautical chart products: <https://www.traficom.fi/fi/merikartoituksen-tuoteluettelo>

More information about the N2000 fairway and nautical chart reform: <https://www.traficom.fi/en/transport/maritime/n2000-fairway-and-nautical-chart-reform-improved>

2

New channel depth instructions:

<https://www.traficom.fi/en/news/new-channel-depth-instructions-enter-force-15-november-2021>

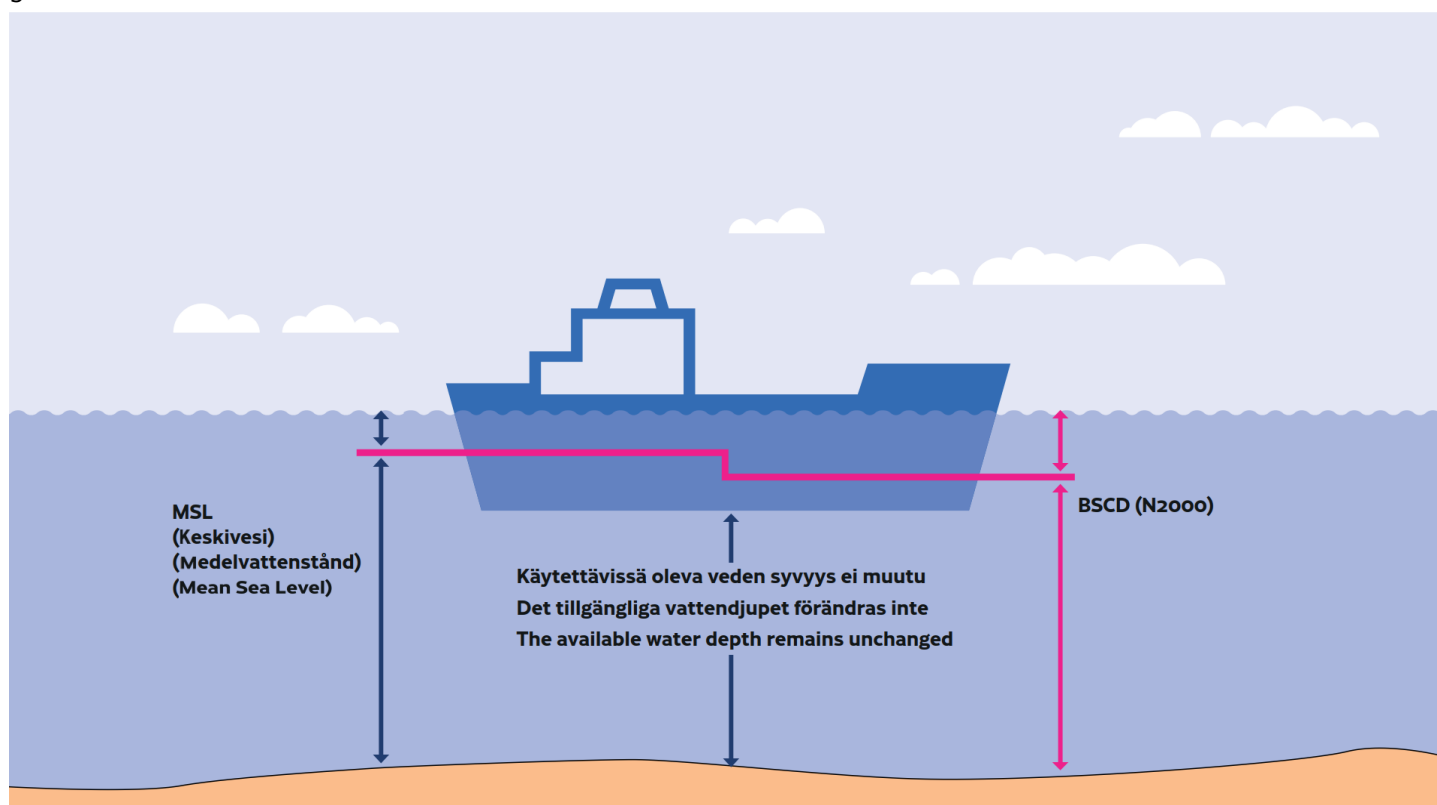
Sailing Directions for Finnish waters:

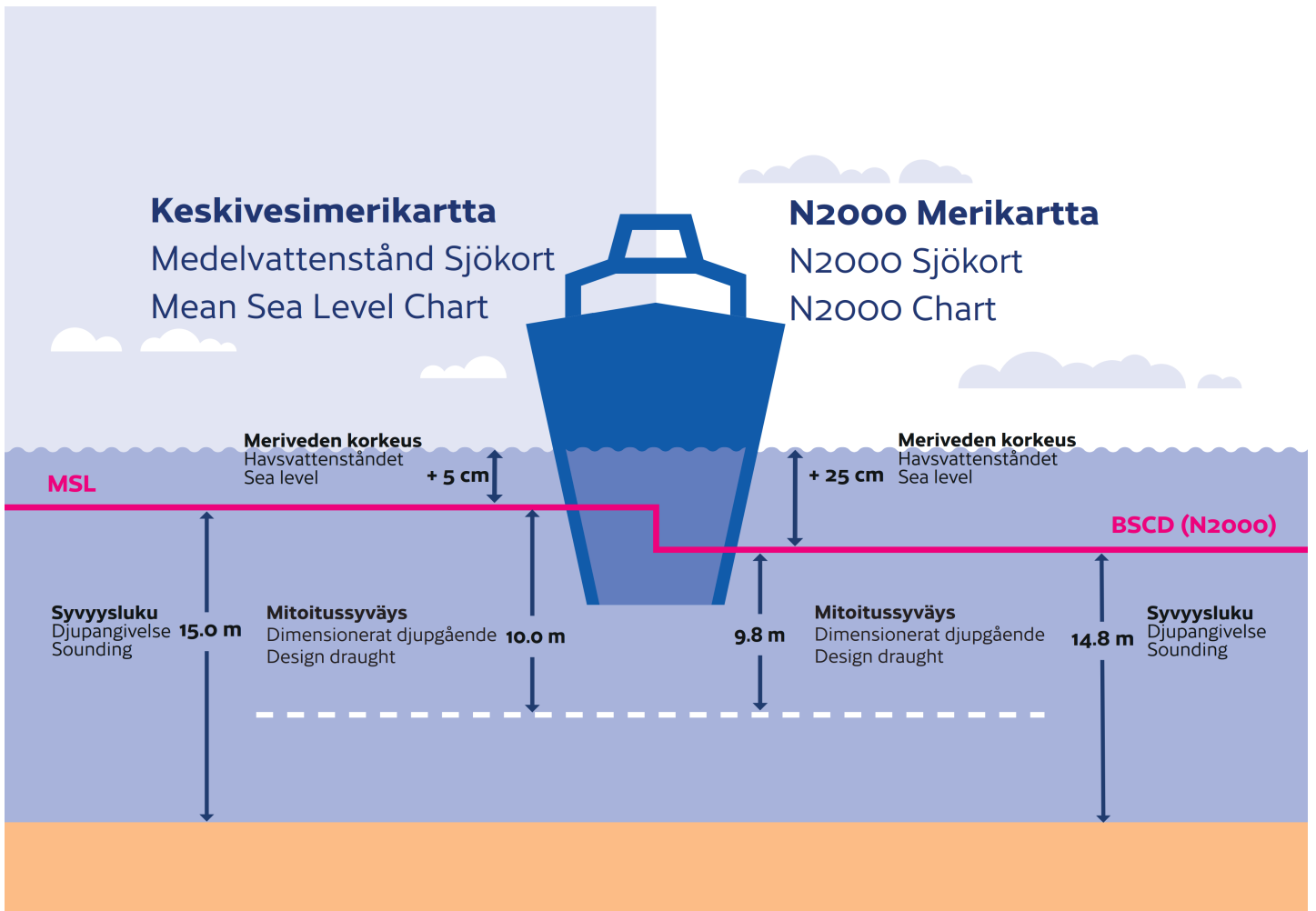
<https://www.traficom.fi/en/services/sailing-directions-finnish-waters>

Presentation of fairway information on Finnish S-57 ENCs

<https://www.traficom.fi/fi/ajankohtaista/vaylatietojen-esitystapa-muuttuu-suomalaisilla-s-57-enc-kartoilla>

3





(Traficom, Helsinki/Helsingfors 2023)

Current Preliminary (P) and Temporary (T) notices (31.10.2023)

Gulf of Finland

T&P	Charts	Gulf of Finland
174(T)/2019 ↗	951	SE of Bol'soj Tjuters. Obstructions
296(T)/2020 ↗	17, 18, 191, 952, A, B	Helsinki. Sipoo. Areas and borders
19(T)/2021 ↗	951, A	NW of Gogland. Light Severnyj Virgin extinguished. Notice repeated. Buoyage
20(T)/2021 ↗	951, A	TSS OFF ROOSHER ISLAND. Lighthouse Rodser extinguished. Notice repeated. Buoyage
228(T)/2021 ↗	951, A	Krestovyj. Lighthouse Krestovyj extinguished. Notice repeated. Buoyage
296(T)/2021 ↗	18, 191, A, B	Kruunuvuori. Korkeasaari...Cultural Features. Vertical Clearances
303(T)/2021 ↗	18, 191, A, B	Helsinki. Hernesaari. Notice repeated. Buoyage
304(T)/2021 ↗	18, 192, A, B	Helsinki. Vuosaari. Notice repeated. Buoyage. Areas and borders
65(T)/2022 ↗	A, S	Vyborg. Destroyed leading beacon. Notice repeated. Buoyage
66(T)/2022 ↗	A, S	Vyborg. Light extinguished. Notice repeated. Buoyage
86(T)/2022 ↗	18, 191, 952, A, B	Helsinki. Kruunuvuori. Restrictions on small craft traffic. Fairways
90(T)/2022 ↗	951	Tiskolovo. Lighthouse Kajbolovo. Buoyage
196(T)/2022 ↗	951	Narva Bay. Areas and borders
232(T)/2022 ↗	18, 191, A, B	Helsinki. Hernesaari. Notice repeated. Buoyage. Areas and borders
266(T)/2022 ↗	18, 191, A, B	Helsinki. Sompasaari...Notice repeated. Areas and borders
61(T)/2023 ↗	14, 138, A	Kotka. Mussalo harbour...Notice repeated. Areas and borders
84(T)/2023 ↗	19, 20, B	Ingå. Porkalafjärden. Edge mark Inkoo 6 inoperative. Buoyage
198(T)/2023 ↗	20, 952, A, B	SW of Tss off Porkkala Lighthouse. Areas and borders

Archipelago Sea

T&P	Charts	Archipelago Sea
107(T)/2021 ↗	26, 190, D	Naantali. Raumakari...Kirkonsalmi. Rafts with seal repellent systems. Buoyage
15(T)/2023 ↗	27, 167, D	Pargas. S of Utö. Buoyage
188(T)/2023 ↗	26, D	Pargas. Hessund...Restrictions on small craft traffic. Areas and borders
189(T)/2023 ↗	26, D	Pargas. Kirjala...Restrictions on traffic. Areas and borders
197(T)/2023 ↗	C	Sottunga. Kyrkviken. Closed channel section. Areas and borders

Aland Sea

T&P	Charts	Aland Sea
-	-	

Bothnian Sea

T&P	Charts	Bothnian Sea
30(T)/2022 ↗	41, 127, E	Rauma. Ulko-Petäjäs. Areas and borders
148(T)/2022 ↗	956	Härnösand. Vårdkasberget. Maintenance of aids to navigation. Buoyage
160(T)/2022 ↗	41, 127, E	Rauma. Otanlahti. Flytande ö. Obstructions
1(T)/2023 ↗	42, 125, E	Pori. Tahkoluoto. Buoyage
104(T)/2023 ↗	955	Off Pori. ODAS buoys. Buoyage
108(T)/2023 ↗	40, 954, 955	Brändö. Kustavi. ODAS buoys. Buoyage
109(T)/2023 ↗	44, 813, 956, E	Kristinestad. Lighthouse Kristiinankaupungin majakka extinguished...Buoyage
128(T)/2023 ↗	953, 954, 955, C	Saltvik. Brändö. Measuring equipment on seabed. Buoyage
167(T)/2023 ↗	954, 955, C	N of Åland. Geotechnical seabed surveys. Areas and borders

The Quark

T&P	Charts	The Quark
238(T)/2022 ↗	48, 115, 921, F, M	Vaasa. Vaskiluoto. Notice repeated. Buoyage
57(T)/2023 ↗	957, F	S of Umeå. Light Fjärdgrund extinguished. Buoyage
110(T)/2023 ↗	48, 115, 820	Vaasa. Vaskiluoto. Dredging operations. Notice repeated. Areas and borders
126(T)/2023 ↗	48, 115, 820	Vaasa. Vaskiluoto. Dredging operations. Areas and borders
142(T)/2023 ↗	48, 115, 820, 956, 957, 8061, 8065	Vaasa. Vaskiluoto. Notice repeated. Buoyage. Fairways. Fairway areas
164(T)/2023 ↗	48, 115, 820	Vaasa. Vaskiluoto. Buoyage
182(T)/2023 ↗	48, 115, 820	Vaasa. Geotechnical seabed surveys. Areas and borders

Bay of Bothnia

T&P	Charts	Bay of Bothnia
47(T)/2023 ↗	57, 119, 845, 846	Port of Oulu. (N2000) (BSCD2000)...Depths. Fairways. Fairway areas
102(T)/2023 ↗	57, 847	Oulu. Luodematalat. Buoyage
196(T)/2023 ↗	57, 119, 845, 846	Port of Oulu. Dredging operations. Areas and borders

Vuoksi watercourse

T&P	Charts	Vuoksi watercourse
268(T)/2019 ↗	M	Kuopio. Kotkatniemi. Buoyage
214(T)/2020 ↗		Leppävirta. Hyvärilä. Buoyage
90(T)/2023 ↗	921, M	Kuopio. Light Sotkanselkä operational. Notice repeated. Buoyage

Kymijoki watercourse

T&P	Charts	Kymijoki watercourse
-	-	

Kokemäijoki watercourse

T&P	Charts	Kokemäijoki watercourse
-	-	

Oulujoki watercourse

T&P	Charts	Oulujoki watercourse
-	-	

Paatsjoki watercourse

T&P	Charts	Paatsjoki watercourse
-	-	

Saimaa Canal

T&P	Charts	Saimaa Canal
-	-	

Northern Baltic

T&P	Charts	Northern Baltic
194(T)/2023 ↗		Hiiumaa. Lighthouse Tahkuna extinguished. Buoyage

Announcements

T&P	Charts	Announcements
291(T)/2022 ↗		Bay of Bothnia. Off Oulu. V-AIS. Notice repeated.
99(T)/2023 ↗		Off Merikarvia. Hydrographic surveying in progress.
137(T)/2023 ↗		Helsinki. Korkeasaari...Restrictions on small craft traffic