



# Notices to Mariners

## NtM 35/2023

Notices: 264 - 269 / 20.12.2023



# Table of Contents

Title	Page
Index by Area	2
Index by Chart	3
Gulf of Finland	4
The Quark	6
Kymijoki watercourse	8
Announcements	10
Current Preliminary (P) and Temporary (T) notices (19.12.2023)	11

# Index by Area

## **Gulf of Finland**

### **Charts**

*264/2023	21, 22, 136, B
265/2023	951

## **The Quark**

### **Charts**

266(T)/2023	47, 825, 956, 957, 8065
*267(T)/2023	47, 825, 956, 957, 8065

## **Kymijoki watercourse**

### **Charts**

*268/2023	J
-----------	---

## **Announcements**

### **Charts**

*269/2023	
-----------	--

# Index by Chart

<b>Charts</b>	<b>Notices</b>
21	*264/2023
22	*264/2023
47	266(T)/2023, *267(T)/2023
136	*264/2023
825	266(T)/2023, *267(T)/2023
951	265/2023
956	266(T)/2023, *267(T)/2023
957	266(T)/2023, *267(T)/2023
8065	266(T)/2023, *267(T)/2023
B	*264/2023
J	*268/2023


# Gulf of Finland

\*264/2023

2023-12-19

Finland. Gulf of Finland. Hanko. West Harbour. Cables and pipelines

Charts		Previous
21	(INT 1253)	235/2023 <a href="#">↗</a>
22	(INT 1254)	228/2023 <a href="#">↗</a>
136, 136.B	(INT 1154)	221/2023 <a href="#">↗</a>
B636, B637.1, B638		249/2023 <a href="#">↗</a>

1	21, 22, 136, 136.B, B636, B637.1, B638	(1) 59°49.130'N 22°56.742'E
Add 	Between the following positions:	(2) 59°49.061'N 22°56.704'E
		(3) 59°48.470'N 22°57.632'E
		(4) 59°48.414'N 22°57.760'E
		(5) 59°48.400'N 22°57.970'E

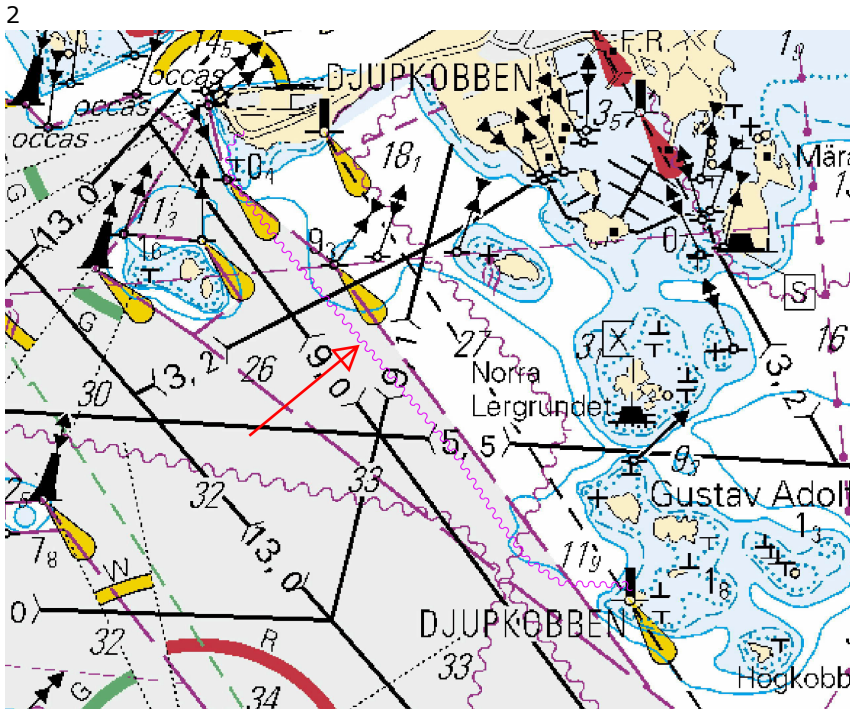


Image for reference, chart extracts not to scale of chart.

(Väylävirasto/Trafikledsverket/Finnish Transport Infrastructure Agency, 2023)

## Charts

951

## Previous

218/2023 [↗](#)

1

951

Delete



Between the following positions:

- |     |            |            |
|-----|------------|------------|
| (1) | 59°32.55'N | 27°35.92'E |
| (2) | 59°32.92'N | 27°36.43'E |
| (3) | 59°32.77'N | 27°38.53'E |
| (4) | 59°31.87'N | 27°41.62'E |
| (5) | 59°30.45'N | 27°42.14'E |
| (6) | 59°30.19'N | 27°41.32'E |
| (7) | 59°31.52'N | 27°36.73'E |

(NtM 12/186, Tallinn 2023)

# The Quark



266(T)/2023

2023-12-19

Sweden. The Quark. TSS in Norra Kvarken. Buoys temporarily withdrawn for the winter. Buoyage

Charts		Previous
47	(INT 1138)	254/2023 <a href="#">↗</a>
825		/
956		/
957	(INT 1208)	254/2023 <a href="#">↗</a>
8065/Vaasa - Uumaja		143/2023 <a href="#">↗</a>

Time: Until further notice

1	47, 956, 957, 8065/Vaasa - Uumaja		
Delete 		63°25.53'N	20°33.93'E
2	47, 825, 957, 8065/Vaasa - Uumaja		
Delete 		63°32.89'N	20°51.03'E

(Ufs 993/18179(T), Norrköping 2023)


\*267(T)/2023

2023-12-19

Sweden. The Quark. TSS IN NORRA KVARKEN. TSS and two-way routes "in Norra Kvarken" temporarily suspended. Areas and borders

Charts		Previous
47	(INT 1138)	266/2023 <a href="#">↗</a>
825		266/2023 <a href="#">↗</a>
956		266/2023 <a href="#">↗</a>
957	(INT 1208)	266/2023 <a href="#">↗</a>
8065/Vaasa - Uumaja		266/2023 <a href="#">↗</a>

Time: From 20 December 2023 at 00.00 UTC

1	47, 825, 956, 957, 8065/Vaasa - Uumaja		
Delete 	Between the following positions:	(1) 63°25.3'N	20°34.8'E
		(2) 63°35.1'N	21°03.7'E

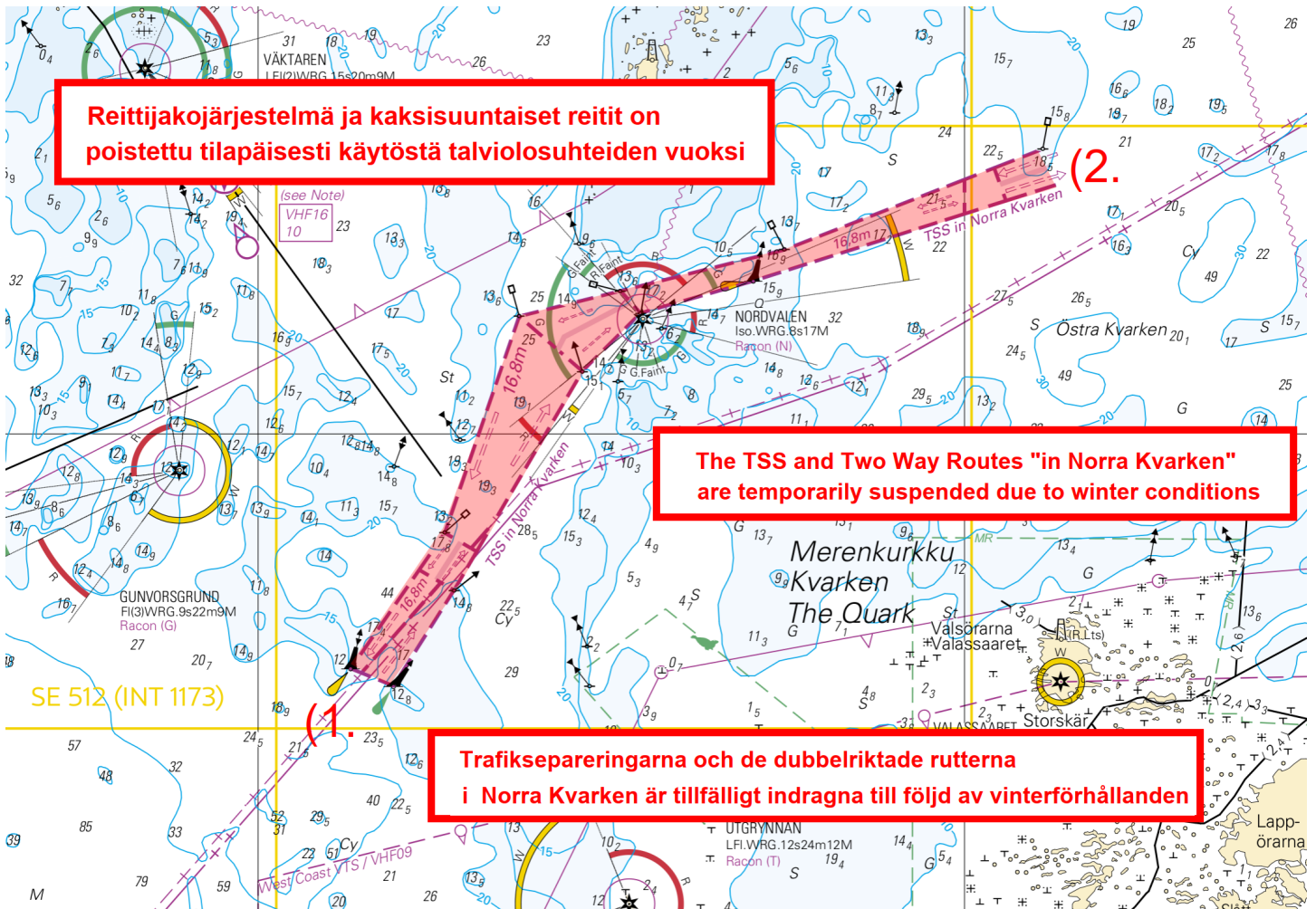


Image for reference, chart extracts not to scale of chart.

(Swedish Transport Agency, Norrköping 2023)

# Kymijoki watercourse

\*268/2023

2023-12-19

Finland. Kymijoki watercourse. Kuhmoinen. Sysmä. Cables and pipelines

## Charts

J311, J312, J313, J313.1

## Previous

155/2023 [↗](#)

1 J311, J312, J313, J313.1

Add 

Between the following positions:

(1)	61°33.16'N	25°09.91'E
(2)	61°32.93'N	25°09.84'E
(3)	61°32.92'N	25°10.46'E
(4)	61°32.84'N	25°10.91'E
(5)	61°32.88'N	25°11.26'E
(6)	61°33.00'N	25°11.61'E
(7)	61°32.69'N	25°12.14'E
(8)	61°32.64'N	25°12.45'E
(9)	61°32.27'N	25°12.91'E
(10)	61°32.08'N	25°13.73'E
(11)	61°31.88'N	25°14.64'E
(12)	61°30.85'N	25°16.32'E
(13)	61°30.71'N	25°17.73'E
(14)	61°30.80'N	25°18.17'E
(15)	61°30.26'N	25°18.98'E
(16)	61°29.39'N	25°27.24'E
(17)	61°28.80'N	25°31.25'E
(18)	61°29.01'N	25°33.50'E
(19)	61°29.37'N	25°34.54'E
(20)	61°29.61'N	25°35.22'E

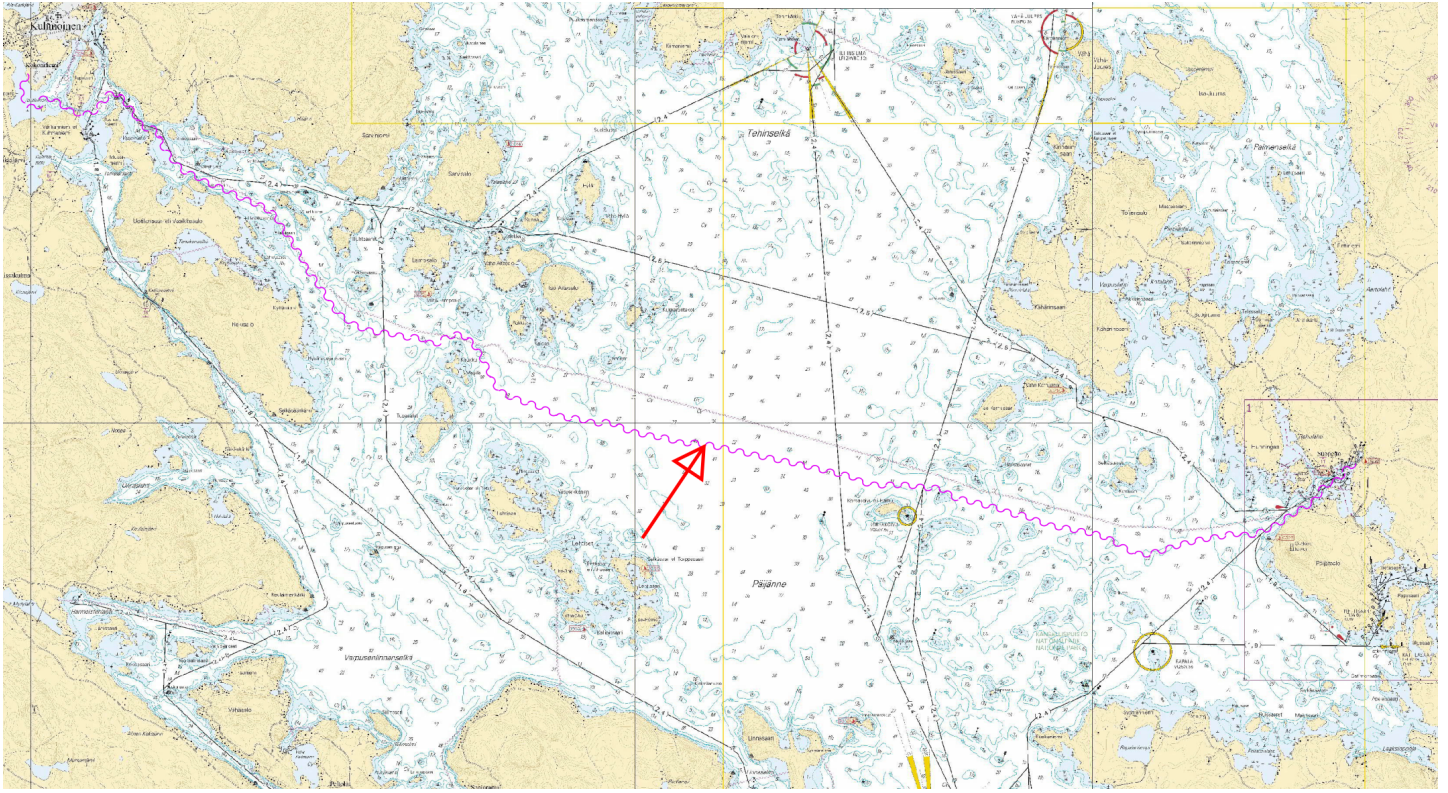


Image for reference, chart extracts not to scale of chart.

(Elisa Oyj, 2023)

# Announcements

\*269/2023

2023-12-19

Finland. Sailing directions for Finnish water 2.3.1. Sea of Bothnia.

**Charts**

**Previous**

References:115/2023 [↗](#)

---

1

In notice NtM TM 34/261/2023 was incorrect item. Correction below:

2

Sailing directions for Finnish water 2.3.1 - Sea of Bothnia

The Finnish Transport and Communications Agency Traficom publishes the nautical charts and nautical publications in Finland. Nautical publications contain information to support the nautical charts. Sailing Directions for Finnish waters consists of a General information part (part 1) and descriptions of the main approach channels (Part 2 – Main approach channels). Part 2 is divided into several volumes. Sailing directions for Finnish waters - Part 1, contains general information, guidelines and links to further information. The channel descriptions include depth- and design-data with general notes on usage of the main approach channels. Sailing directions are published as PDF- documents and provided for free download at: <https://fiho.fi/lnk/sd/en>.

Channel descriptions are published together with the N2000 nautical charts. Volume 2.3.1 - Sea of Bothnia, has been published 12 December 2023.

Temporary changes to fairways are not reflected in the Sailing Directions. Mariners should follow the Notices to Mariners and ensure availability of the newest publications including any needed linked material onboard.

<https://www.traficom.fi/en/services/notices-mariners>

(Traficom, Helsinki/Helsingfors 2023)

---

---

# Current Preliminary (P) and Temporary (T) notices (19.12.2023)

## Gulf of Finland

T&P	Charts	Gulf of Finland
174(T)/2019 <a href="#">↗</a>	951	SE of Bol'soj Tjuters. Obstructions
296(T)/2020 <a href="#">↗</a>	17, 18, 191, 952, A, B	Helsinki. Sipoo. Areas and borders
19(T)/2021 <a href="#">↗</a>	951, A	NW of Gogland. Light Severnyj Virgin extinguished. Notice repeated. Buoyage
20(T)/2021 <a href="#">↗</a>	951, A	TSS OFF ROOSHER ISLAND. Lighthouse Rodser extinguished. Notice repeated. Buoyage
228(T)/2021 <a href="#">↗</a>	951, A	Krestovyj. Lighthouse Krestovyj extinguished. Notice repeated. Buoyage
296(T)/2021 <a href="#">↗</a>	18, 191, A, B	Kruunuvuori. Korkeasaari...Cultural Features. Vertical Clearances
304(T)/2021 <a href="#">↗</a>	18, 192, A, B	Helsinki. Vuosaari. Notice repeated. Buoyage. Areas and borders
65(T)/2022 <a href="#">↗</a>	A, S	Vyborg. Destroyed leading beacon. Notice repeated. Buoyage
66(T)/2022 <a href="#">↗</a>	A, S	Vyborg. Light extinguished. Notice repeated. Buoyage
86(T)/2022 <a href="#">↗</a>	18, 191, 952, A, B	Helsinki. Kruunuvuori. Restrictions on small craft traffic. Fairways
90(T)/2022 <a href="#">↗</a>	951	Tiskolovo. Lighthouse Kajbolovo. Buoyage
196(T)/2022 <a href="#">↗</a>	951	Narva Bay. Areas and borders
266(T)/2022 <a href="#">↗</a>	18, 191, A, B	Helsinki. Sompasaari...Notice repeated. Areas and borders
217(T)/2023 <a href="#">↗</a>	18, 191, A, B	Helsinki. Sompasaari. Crown Bridges. Notice repeated. Buoyage
218(T)/2023 <a href="#">↗</a>	951, 952	N of Purekkarineem. Floating obstruction. Obstructions
229(T)/2023 <a href="#">↗</a>	18, 191, A, B	Helsinki. Hernesaari. Buoyage
230(T)/2023 <a href="#">↗</a>	18, 191, A, B	Helsinki. Hernesaari. Buoyage. Areas and borders

## Archipelago Sea

T&P	Charts	Archipelago Sea
107(T)/2021 <a href="#">↗</a>	26, 190, D	Naantali. Raumakari...Kirkonsalmi. Rafts with seal repellent systems. Buoyage
15(T)/2023 <a href="#">↗</a>	27, 167, D	Pargas. S of Utö. Buoyage
188(T)/2023 <a href="#">↗</a>	26, D	Pargas. Hessund...Restrictions on small craft traffic. Areas and borders
189(T)/2023 <a href="#">↗</a>	26, D	Pargas. Kirjala...Restrictions on traffic. Areas and borders
197(T)/2023 <a href="#">↗</a>	C	Sottunga. Kyrkviken. Closed channel section. Areas and borders
250(T)/2023 <a href="#">↗</a>	D	Kaarina. Kuusistonsalmi...Notice repeated. Areas and borders

## Aland Sea

T&P	Charts	Aland Sea
-	-	

## Bothnian Sea

T&P	Charts	Bothnian Sea
<a href="#">30(T)/2022</a>	41, 127, E	Rauma. Ulko-Petäjäs. Areas and borders
<a href="#">148(T)/2022</a>	956	Härnösand. Vårdkasberget. Maintenance of aids to navigation. Buoyage
<a href="#">160(T)/2022</a>	41, 127, E	Rauma. Otanlahti. Flytande ö. Obstructions
<a href="#">1(T)/2023</a>	42, 125, E	Pori. Tahkoluoto. Buoyage
<a href="#">104(T)/2023</a>	955	Off Pori. ODAS buoys. Buoyage
<a href="#">108(T)/2023</a>	40, 954, 955	Brändö. Kustavi. ODAS buoys. Buoyage
<a href="#">109(T)/2023</a>	44, 813, 956, E	Kristinestad. Lighthouse Kristiinankaupungin majakka extinguished...Buoyage
<a href="#">128(T)/2023</a>	953, 954, 955, C	Saltvik. Brändö. Measuring equipment on seabed. Buoyage
<a href="#">253(T)/2023</a>	955	E of Gävle. Light temporarily unlit. Buoyage

## The Quark

T&P	Charts	The Quark
<a href="#">238(T)/2022</a>	48, 115, 921, F, M	Vaasa. Vaskiluoto. Notice repeated. Buoyage
<a href="#">57(T)/2023</a>	957, F	S of Umeå. Light Fjärdgrund extinguished. Buoyage
<a href="#">126(T)/2023</a>	48, 115, 820	Vaasa. Vaskiluoto. Dredging operations. Areas and borders
<a href="#">142(T)/2023</a>	48, 115, 820, 956, 957, 8061, 8065	Vaasa. Vaskiluoto. Notice repeated. Buoyage. Fairways. Fairway areas
<a href="#">254(T)/2023</a>	47, 48, 822, 956, 957	Buoys and spar buoy temporarily withdrawn for the winter. Virtual AIS. Buoyage
<a href="#">255(T)/2023</a>	48, 115, 820	Vaasa. Vaskiluoto. Notice repeated. Buoyage
<a href="#">256(T)/2023</a>	48, 115, 820	Vaasa. Vaskiluoto. Dredging operations. Notice repeated. Areas and borders
<a href="#">266(T)/2023</a>	47, 825, 956, 957, 8065	TSS in Norra Kvarken. Buoys temporarily withdrawn for the winter. Buoyage
<a href="#">267(T)/2023</a>	47, 825, 956, 957, 8065	TSS IN NORRA KVARKEN. TSS and two-way routes "in Norra Kvarken" temporarily ...

## Bay of Bothnia

T&P	Charts	Bay of Bothnia
47(T)/2023 <a href="#">↗</a>	57, 119, 845, 846	Port of Oulu. ( N2000 ) (BSCD2000)...Depths. Fairways. Fairway areas
102(T)/2023 <a href="#">↗</a>	57, 847	Oulu. Luodematalat. Buoyage
257(T)/2023 <a href="#">↗</a>	60, 958	Buoys temporarily withdrawn for the winter. Virtual AIS. Buoyage
263(T)/2023 <a href="#">↗</a>	55, 119, 838, 839, 958, 8071	Raahe. Light Heikinkari extinguished. Buoyage

## Vuoksi watercourse

T&P	Charts	Vuoksi watercourse
268(T)/2019 <a href="#">↗</a>	M	Kuopio. Kotkatniemi. Buoyage
214(T)/2020 <a href="#">↗</a>		Leppävirta. Hyvärilä. Buoyage
90(T)/2023 <a href="#">↗</a>	921, M	Kuopio. Light Sotkanselkä operational. Notice repeated. Buoyage

## Kymijoki watercourse

T&P	Charts	Kymijoki watercourse
-	-	

## Kokemäijoki watercourse

T&P	Charts	Kokemäijoki watercourse
-	-	

## Oulujoki watercourse

T&P	Charts	Oulujoki watercourse
-	-	

## Paatsjoki watercourse

T&P	Charts	Paatsjoki watercourse
-	-	

## Saimaa Canal

T&P	Charts	Saimaa Canal
-	-	

## Northern Baltic

T&P	Charts	Northern Baltic
194(T)/2023 <a href="#">↗</a>		Hiiumaa. Lighthouse Tahkuna extinguished. Buoyage

## Announcements

T&P	Charts	Announcements
291(T)/2022 <a href="#">↗</a>		Bay of Bothnia. Off Oulu. V-AIS. Notice repeated.
99(T)/2023 <a href="#">↗</a>		Off Merikarvia. Hydrographic surveying in progress.
137(T)/2023 <a href="#">↗</a>		Helsinki. Korkeasaari...Restrictions on small craft traffic