



# Notices to Mariners

## NtM 4/2023

Notices: 19 - 29 / 10.02.2023



# Table of Contents

<b>Title</b>	<b>Page</b>
Index by Area	2
Index by Chart	3
Gulf of Finland	4
Archipelago Sea	6
The Quark	9
Bay of Bothnia	11
Kymijoki watercourse	12
Announcements	13
Current Preliminary (P) and Temporary (T) notices (10.02.2023)	14

# Index by Area

## **Gulf of Finland**

### **Charts**

*20/2023	15, 16, A
*21/2023	21, 952, B
22(T)/2023	952, A, B
*27/2023	13, 14, A

## **Archipelago Sea**

### **Charts**

*19(T)/2023	26, D
*28/2023	26, 105, 952, 953, 954, B, D

## **The Quark**

### **Charts**

*23/2023	956, 957, F
*25(T)/2023	47, 956, 957, F

## **Bay of Bothnia**

### **Charts**

24/2023	956, 957, F
---------	-------------

## **Kymijoki watercourse**

### **Charts**

*29/2023	447
----------	-----

## **Announcements**

### **Charts**

*26/2023	
----------	--

# Index by Chart

<b>Charts</b>	<b>Notices</b>
13	*27/2023
14	*27/2023
15	*20/2023
16	*20/2023
21	*21/2023
26	*19(T)/2023, *28/2023
47	*25(T)/2023
105	*28/2023
447	*29/2023
952	*21/2023, 22(T)/2023, *28/2023
953	*28/2023
954	*28/2023
956	*23/2023, 24/2023, *25(T)/2023
957	*23/2023, 24/2023, *25(T)/2023
A	*20/2023, 22(T)/2023, *27/2023
B	*21/2023, 22(T)/2023, *28/2023
D	*19(T)/2023, *28/2023
F	*23/2023, 24/2023, *25(T)/2023


# Gulf of Finland

\*20/2023

2023-02-02

Finland. Gulf of Finland. Loviisa. Hästholmen. Buoyage

Charts		Previous
15	(INT 1247)	192/2022 <a href="#">↗</a>
16	(INT 1248)	192/2022 <a href="#">↗</a>
A615, A615.3		9/2023 <a href="#">↗</a>

1 15, 16, A615, A615.3  
Delete  60°21.401'N 26°20.213'E 43379

(Traficom, Helsinki/Helsingfors 2023)



\*21/2023

2023-02-03

Finland. Gulf of Finland. Raseborg. Lighthouse Längden operational.  
Buoyage

Charts		Previous
21	(INT 1253)	8/2023 <a href="#">↗</a>
952		279/2022 <a href="#">↗</a>
B/INDEX, B636, B/Hanko - Haapsalu		11/2023 <a href="#">↗</a>

Cancelled: 85(T)/2022 [↗](#)

1 21, 952, B/INDEX, B636, B/Hanko - Haapsalu  
Amend    
LÄNGDEN LÄNGDEN  
FI(3)WRG.15s → FI(3)WRG.15s  
(exting) (Racon M) (not in use) → (Racon M)  
59°46.65'N 23°14.86'E 11495, (C4991.6)

(Traficom, Helsinki/Helsingfors 2023)


22(T)/2023

2023-02-03

Estonia. Gulf of Finland. Aksi. Light Aksi extinguished. Buoyage

Charts	Previous
952	21/2023 <a href="#">↗</a>
A/Helsinki - Tallinna	20/2023 <a href="#">↗</a>
B/Helsinki - Tallinn	21/2023 <a href="#">↗</a>

Time: Until further notice

1	952, A/Helsinki - Tallinna, B/Helsinki - Tallinn		
Amend			
	AKSI Fl.G.3s (exting)	59°35.73'N	25°05.89'E

(NtM 2/13(T), Tallinn 2023)


\*27/2023

2023-02-10

Finland. Gulf of Finland. Kotka. Haapasaari. SE of Veitkari. Obstructions

Charts	Previous
13	(INT 1245) 9/2023 <a href="#">↗</a>
14	(INT 1246) 9/2023 <a href="#">↗</a>
A608	22/2023 <a href="#">↗</a>

Cancelled: 9(T)/2023 [↗](#)

1	13, 14, A608		
Delete			
	Obstn	Underwater measuring devices	60°14.91'N 27°14.86'E

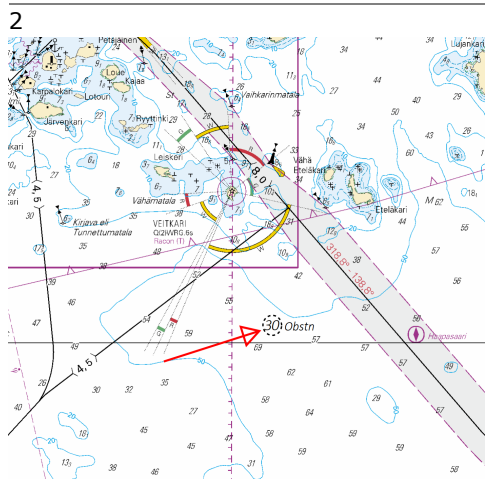


Image for reference, chart extracts not to scale of chart.

# Archipelago Sea

\*19(T)/2023

2023-02-01

Finland. Archipelago Sea. Pargas. Hessund. Channel closed. Areas and borders

## Charts

26

(INT 1189)

## Previous

17/2023 [↗](#)

D705

17/2023 [↗](#)

Time: 6 February 2023 - to approx. 30 April 2023

References: 253(T)/2022 [↗](#)

1  
The channel will be closed for vessel traffic during bridge construction work.

2  
26, D705

Add

Traffic restrictions

60°19.41'N

22°20.62'E

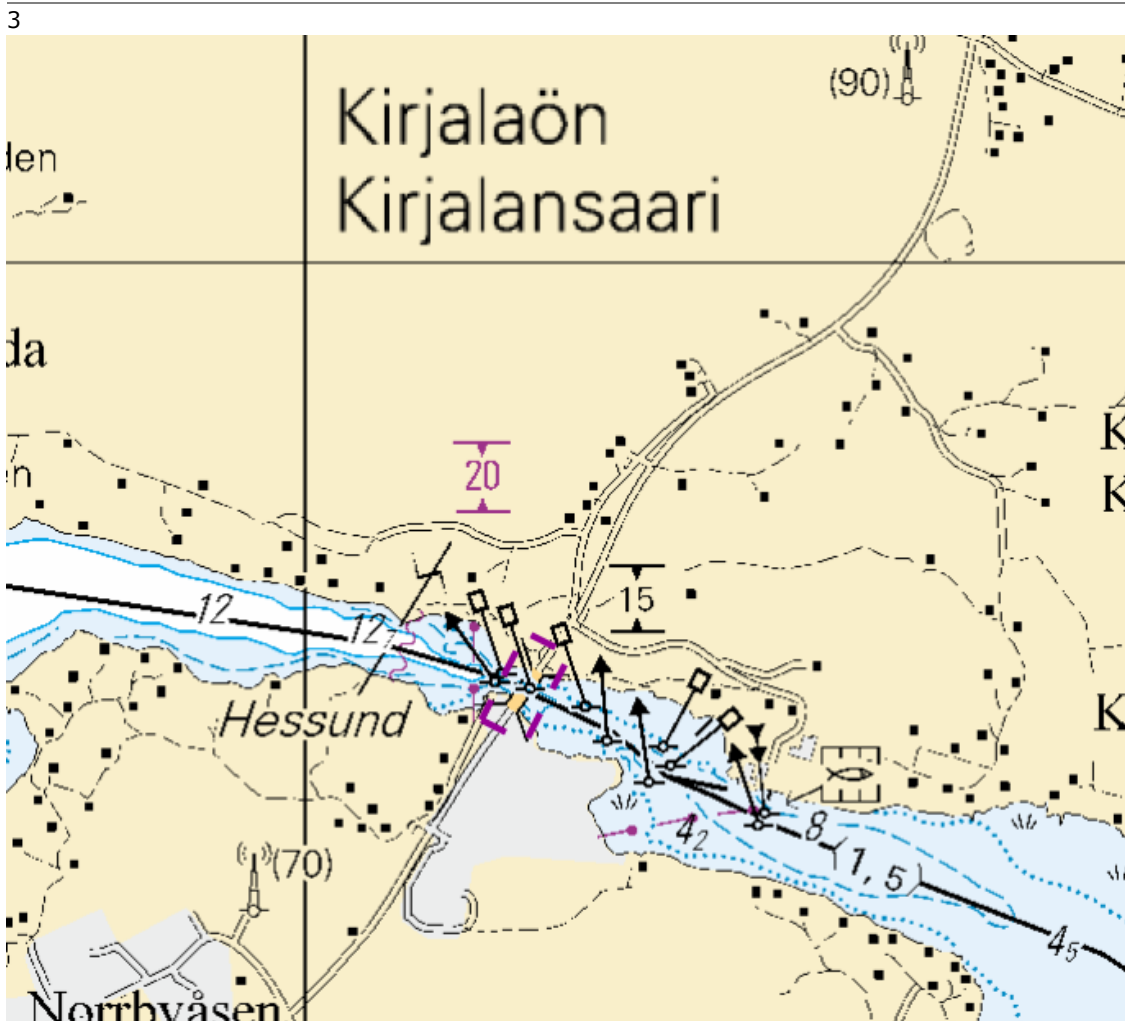


Image for reference, chart extracts not to scale of chart.












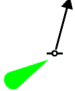

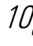
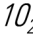

(Traficom, Helsinki/Helsingfors 2023)

\*28/2023

2023-02-10

Finland. Archipelago Sea. Pargas. Kirstigrund. Depths. Buoyage. Fairways.  
Fairway areas. Offshore Installations. Ports

Charts		Previous
26	(INT 1189)	19/2023 <a href="#">↗</a>
105.C	(INT 11881)	270/2022 <a href="#">↗</a>
952		22/2023 <a href="#">↗</a>
953		18/2023 <a href="#">↗</a>
954	(INT 1210)	18/2023 <a href="#">↗</a>
B650, B650.1		22/2023 <a href="#">↗</a>
D704, D704.1, D705, D707, D/Utö - Turku		19/2023 <a href="#">↗</a>

1		26, 105.C, B650, B650.1, D704, D704.1				
Amend				60°16.808'N	22°18.376'E	22608
2		26, 105.C, B650, B650.1, D704, D704.1				
Amend				(1) 60°16.846'N	22°18.402'E	
				(2) 60°16.841'N	22°18.399'E	22609
3		26, 105.C, B650, B650.1, D704, D704.1, D705				
Amend				60°16.884'N	22°17.919'E	22610
4		26, 105.C, B650, B650.1, D704, D704.1, D705				
Amend				(1) 60°16.922'N	22°17.939'E	
				(2) 60°16.914'N	22°17.966'E	22611
5		26, 105.C, B650, B650.1, D704, D704.1, D705, D707				
Move				<b>From</b>		
				60°16.935'N	22°17.346'E	
				<b>To</b>		
				60°16.925'N	22°17.360'E	28054
6		26, 105.C, B650, B650.1, D704, D704.1				
Delete				60°16.435'N	22°18.535'E	
7		26, 105.C, B650, B650.1, D704, D704.1				
Add				60°16.486'N	22°18.622'E	
8		26, 105.C, B650, B650.1, D704, D704.1, D705, D707				
Delete				60°16.925'N	22°17.485'E	

9	26, 105.C, B650, B650.1, D704, D704.1, D705, D707	(1) 60°16.975'N 22°17.376'E (2) 60°16.960'N 22°17.340'E (3) 60°16.948'N 22°17.359'E (4) 60°16.922'N 22°17.482'E
Delete		
10	26, 105.C, 952, 953, 954, B650, B650.1, D704, D704.1, D705, D/Utö - Turku	(1) 60°16.935'N 22°17.730'E (2) 60°16.824'N 22°18.387'E (3) 60°16.747'N 22°18.645'E
Add		Between the following positions: Delete former centre line
11	26, 105.C, 952, 953, 954, B650, B650.1, D704, D704.1, D705, D707, D/Utö - Turku	(1) 60°16.909'N 22°17.909'E (2) 60°16.913'N 22°17.616'E (3) 60°16.948'N 22°17.506'E
Delete		Between the following positions:
12	26, 105.C, B650, B650.1, D704, D704.1, D705, D707	60°16.988'N 22°17.466'E
Delete		
13	26, 105.C, B650, B650.1, D704, D704.1, D705, D707	(1) 60°17.018'N 22°17.453'E (2) 60°17.004'N 22°17.460'E (3) 60°16.965'N 22°17.380'E (4) 60°16.967'N 22°17.355'E
Add		Between the following positions:

14 26, 105.C, B650, B650.1, D704, D704.1, D705, D707

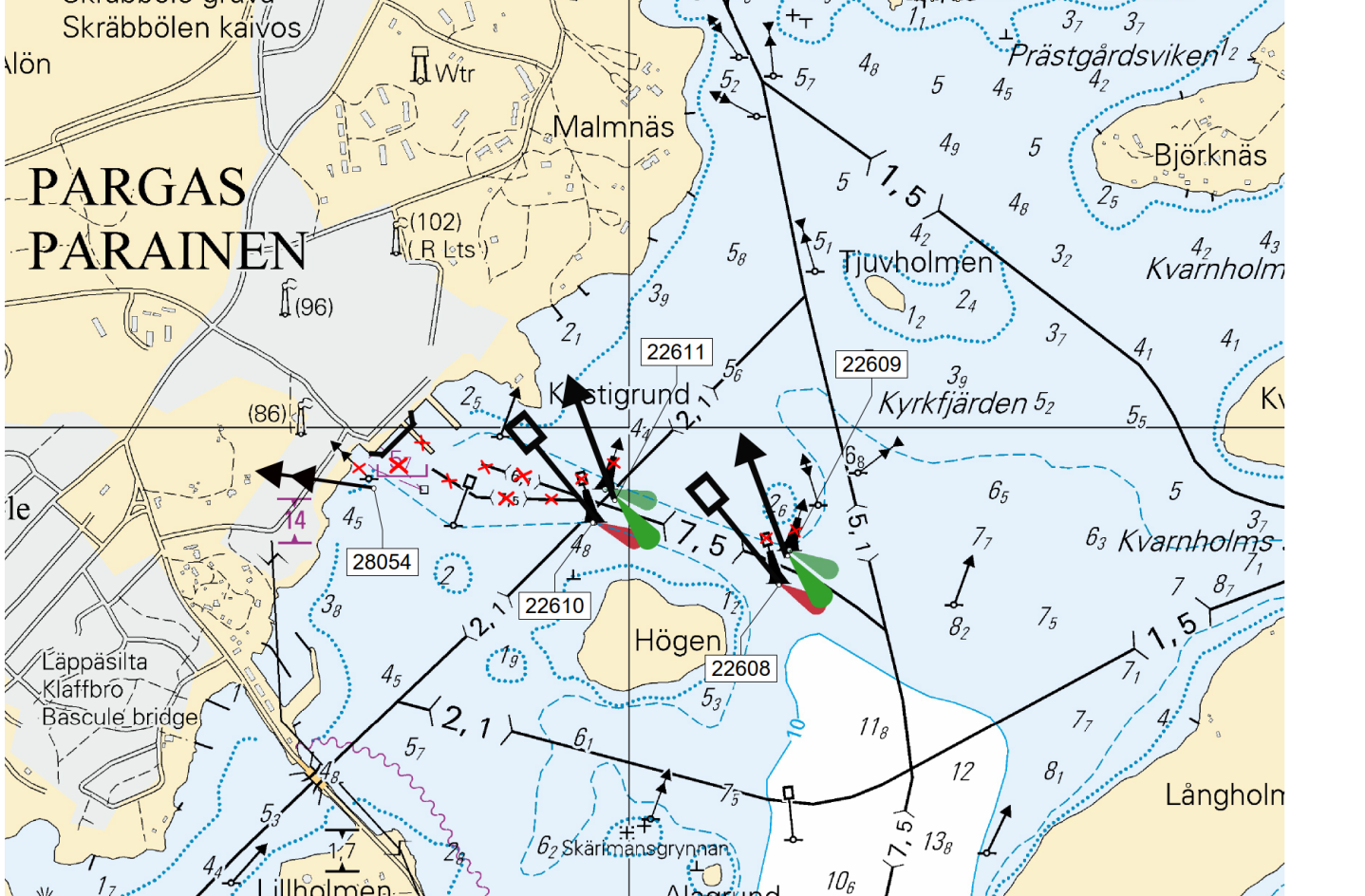


Image for reference, chart extracts not to scale of chart.

# The Quark

\*23/2023

2023-02-03

Sweden. The Quark. Örnsköldsvik. Pilot boarding place moved. Pilotage

Charts	Previous
956	260/2022 <a href="#">↗</a>
957 (INT 1208)	260/2022 <a href="#">↗</a>
F/Vaasa - Uumaja	274/2022 <a href="#">↗</a>

1 956, 957, F/Vaasa - Uumaja

Move



From

63°07.64'N 19°01.85'E

To

63°09.43'N 18°59.76'E

(Traficom, Helsinki/Helsingfors 2023)

\*25(T)/2023

2023-02-07

Sweden. The Quark. TSS IN NORRA KVARKEN. TSS and two-way routes "in Norra Kvarken" temporarily suspended. Areas and borders

Charts	Previous
47 (INT 1138)	260/2022 <a href="#">↗</a>
956	24/2023 <a href="#">↗</a>
957 (INT 1208)	24/2023 <a href="#">↗</a>
F/INDEX, F823, F/Vaasa - Uumaja	24/2023 <a href="#">↗</a>

Time: Until further notice

References: 260(T)/2022 [↗](#)

1 47, 956, 957, F/INDEX, F823, F/Vaasa - Uumaja

Delete



Between the following positions:

(1) 63°25.3'N 20°34.8'E

(2) 63°35.1'N 21°03.7'E

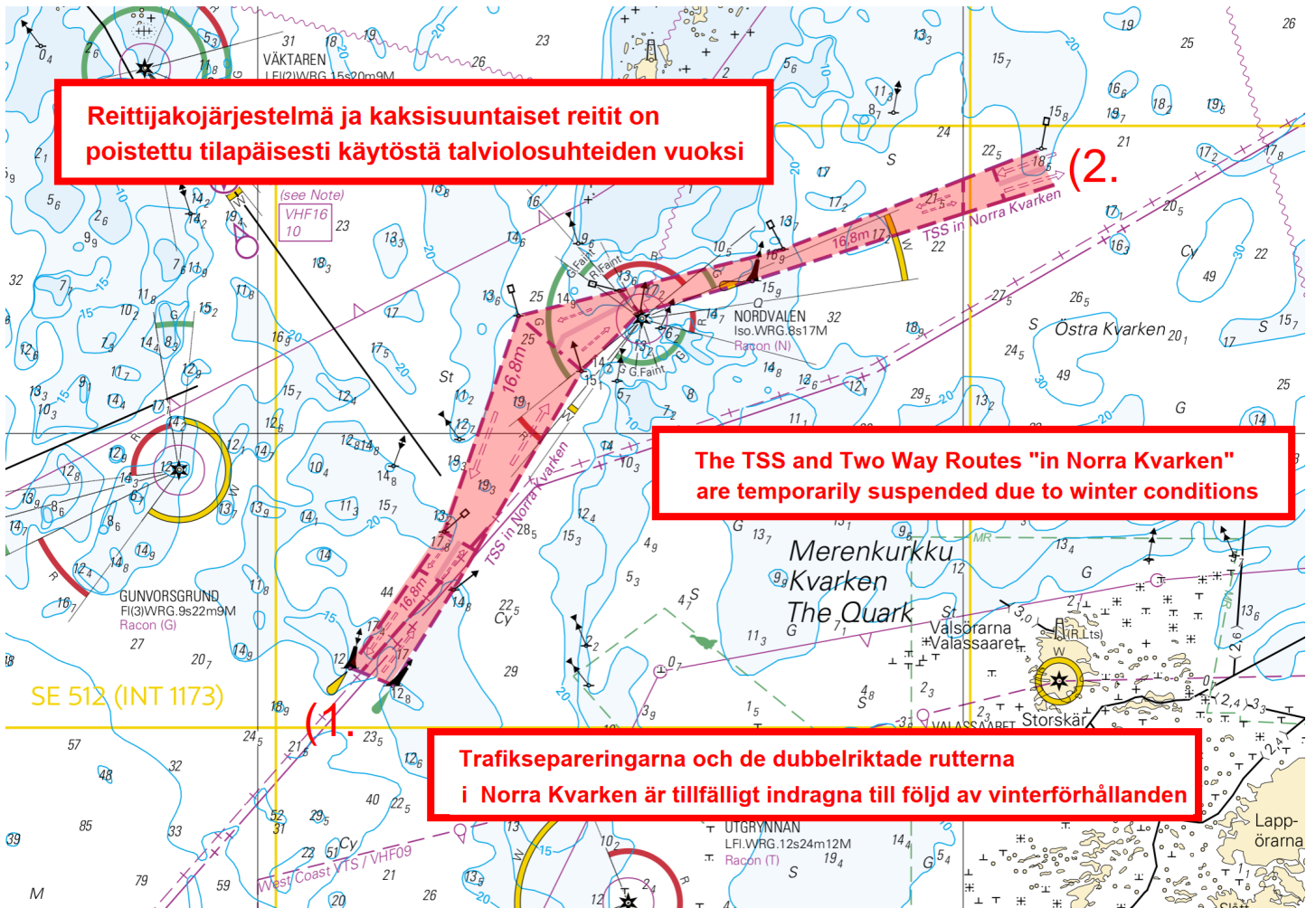


Image for reference, chart extracts not to scale of chart.

(Ufs 17422(T), Norrköping 2023)

# Bay of Bothnia

24/2023


2023-02-03

Sweden. Bay of Bothnia. Husum. Örnskoldsvik. Pilotage. Chart marking

Charts	Previous
956	23/2023 <a href="#">↗</a>
957	(INT 1208) 23/2023 <a href="#">↗</a>
F/Vaasa - Uumaja	23/2023 <a href="#">↗</a>

References: [23/2023](#) [↗](#)

---

1		956, 957, F/Vaasa - Uumaja		
Add			63°18.1'N	19°16.1'E
	No 2			

---

2		956, F/Vaasa - Uumaja		
Add	No 1	Pilot boarding place, with name "No 1"	63°09.43'N	18°59.76'E

(Ufs 944/17279, 17285, Norrköping 2023)

---

---

# Kymijoki watercourse

\*29/2023

2023-02-10

Finland. Kymijoki watercourse. Vesanto. Buoyage

Charts

447


Previous

/

---

1		447				
Delete				62°51.720'N	26°33.970'E	54613

---

2		447					
Amend				Delete leading line	62°51.713'N	26°33.981'E	54614

(Traficom, Helsinki/Helsingfors 2023)

---

---

# Announcements

\*26/2023

2023-02-07

Finland. Notices to Mariners - Information 2023.

**Charts**

**Previous**

---

1

Updated information about Notices to Mariners will be available on Traficom's website:  
The Hydrographic Office: <https://www.traficom.fi/en/nautical-charts>

(Traficom, Helsinki/Helsingfors 2023)

---

---

# Current Preliminary (P) and Temporary (T) notices (10.02.2023)

## Gulf of Finland

T&P	Charts	Gulf of Finland
174(T)/2019 <a href="#">↗</a>	951	SE of Bol'soj Tjuters. Obstructions
296(T)/2020 <a href="#">↗</a>	17, 18, 191, 952, A, B	Helsinki. Sipoo. Areas and borders
19(T)/2021 <a href="#">↗</a>	951, A	NW of Gogland. Light Severnyj Virgin extinguished. Notice repeated. Buoyage
20(T)/2021 <a href="#">↗</a>	951, A	TSS OFF ROOSHER ISLAND. Lighthouse Rodser extinguished. Notice repeated. Buoyage
226(T)/2021 <a href="#">↗</a>	22, 952, 953, 954, B	Off Hanko. Lighthouse Russarö. Maintenance work. Buoyage
228(T)/2021 <a href="#">↗</a>	951, A	Krestovyj. Lighthouse Krestovyj extinguished. Notice repeated. Buoyage
262(T)/2021 <a href="#">↗</a>	138	Kotka. Hietanen. Fairway areas
296(T)/2021 <a href="#">↗</a>	18, 191, A, B	Kruunuvuori. Korkeasaari...Cultural Features. Vertical Clearances
303(T)/2021 <a href="#">↗</a>	18, 191, A, B	Helsinki. Hernesaari. Notice repeated. Buoyage
304(T)/2021 <a href="#">↗</a>	18, 192, A, B	Helsinki. Vuosaari. Notice repeated. Buoyage. Areas and borders
2(T)/2022 <a href="#">↗</a>	14, 138, A	Kotka. Mussalo. Fairway areas
65(T)/2022 <a href="#">↗</a>	A, S	Vyborg. Destroyed leading beacon. Notice repeated. Buoyage
66(T)/2022 <a href="#">↗</a>	A, S	Vyborg. Light extinguished. Notice repeated. Buoyage
81(T)/2022 <a href="#">↗</a>	21, B	Hangon itäinen selkä. ODAS buoy. Buoyage
86(T)/2022 <a href="#">↗</a>	18, 191, 952, A, B	Helsinki. Kruunuvuori. Restrictions on small craft traffic. Fairways
90(T)/2022 <a href="#">↗</a>	951	Tiskolovo. Lighthouse Kajbolovo. Buoyage
115(T)/2022 <a href="#">↗</a>	14, 951, A	Kotka. NW of Kirkonmaa. Light Kiviletto extinguished. Buoyage
181(T)/2022 <a href="#">↗</a>	19, 132, B	Siuntio. Båtviken. Dredging operations. Areas and borders
193(T)/2022 <a href="#">↗</a>	14, 138, A	Kotka. Mussalo harbour...Notice repeated. Areas and borders
196(T)/2022 <a href="#">↗</a>	951	Narva Bay. Areas and borders
226(T)/2022 <a href="#">↗</a>	18, 191, A, B	Helsinki. Sompasaari. Crown Bridges. Notice repeated. Buoyage
232(T)/2022 <a href="#">↗</a>	18, 191, A, B	Helsinki. Hernesaari. Notice repeated. Buoyage. Areas and borders
266(T)/2022 <a href="#">↗</a>	18, 191, A, B	Helsinki. Sompasaari...Notice repeated. Areas and borders
22(T)/2023 <a href="#">↗</a>	952, A, B	Aksi. Light Aksi extinguished. Buoyage

## Archipelago Sea

T&P	Charts	Archipelago Sea
107(T)/2021 <a href="#">↗</a>	26, 190, D	Naantali. Raumakari...Kirkonsalmi. Rafts with seal repellent systems. Buoyage
252(T)/2022 <a href="#">↗</a>	26, 190, D	Raisio. Dockyard. Areas and borders
253(T)/2022 <a href="#">↗</a>	26, D	Pargas. Kirjala. Hessund. Bridge repair works. Areas and borders
15(T)/2023 <a href="#">↗</a>	27, 167, D	Pargas. S of Utö. Buoyage
19(T)/2023 <a href="#">↗</a>	26, D	Pargas. Hessund. Channel closed. Areas and borders

## Aland Sea

T&P	Charts	Aland Sea
-	-	

## Bothnian Sea

T&P	Charts	Bothnian Sea
30(T)/2022 <a href="#">↗</a>	41, 127, E	Rauma. Ulko-Petäjäs. Areas and borders
148(T)/2022 <a href="#">↗</a>	956	Härnösand. Vårdkasberget. Maintenance of aids to navigation. Buoyage
160(T)/2022 <a href="#">↗</a>	41, 127, E	Rauma. Otanlahti. Flytande ö. Obstructions
254(T)/2022 <a href="#">↗</a>	40, D, E	Off Uusikaupunki. Light Iso Vehanen extinguished. Buoyage
1(T)/2023 <a href="#">↗</a>	42, 125, E	Pori. Tahkoluoto. Buoyage

## The Quark

T&P	Charts	The Quark
340(T)/2021 <a href="#">↗</a>	48, 115, F	Vaasa. Vaskiluoto. Buoyage
237(T)/2022 <a href="#">↗</a>	48, 115, 956, 957, F	Vaasa. Vaskiluoto. Notice repeated. Fairways
238(T)/2022 <a href="#">↗</a>	48, 115, 921, F, M	Vaasa. Vaskiluoto. Notice repeated. Buoyage
239(T)/2022 <a href="#">↗</a>	48, 115, 956, 957, F	Vaasa. Vaskiluoto. Notice repeated. Depths. Buoyage. Fairways. Fairway areas
260(T)/2022 <a href="#">↗</a>	47, 48, 956, 957, F	Buoys and spar buoys temporarily withdrawn for the winter. Virtual AIS. Buoyage
25(T)/2023 <a href="#">↗</a>	47, 956, 957, F	TSS IN NORRA KVARKEN. TSS and two-way routes "in Norra Kvarken" temporarily ...

## Bay of Bothnia

T&P	Charts	Bay of Bothnia
72(T)/2022 <a href="#">↗</a>	57, 119	Port of Oulu. ( N2000 ) (BSCD2000). Depths. Fairways. Fairway areas
73(T)/2022 <a href="#">↗</a>	G	Port of Oulu. MSL (Mean Sea Level) / MW (Mean Water)...Fairways. Fairway areas
77(T)/2022 <a href="#">↗</a>	54, G	Pyhäjoki. Hanhikivi. Notice repeated. Buoyage
187(T)/2022 <a href="#">↗</a>	60, 958, 8071	Hailuoto. Edge mark Holma extinguished. Buoyage
256(T)/2022 <a href="#">↗</a>	60, 958, 8071	Off Oulu. Light buoy withdrawn for the winter. Virtual AIS. Buoyage

## Vuoksi watercourse

T&P	Charts	Vuoksi watercourse
268(T)/2019 <a href="#">↗</a>	M	Kuopio. Kotkatniemi. Buoyage
214(T)/2020 <a href="#">↗</a>		Leppävirta. Hyvärilä. Buoyage
235(T)/2020 <a href="#">↗</a>	921, M	Kuopio. Avoluoto. Notice repeated. Buoyage
180(T)/2022 <a href="#">↗</a>	L	Lappeenranta. Porkka. Light Luovukkaluoto. Buoyage

## Kymijoki watercourse

T&P	Charts	Kymijoki watercourse
272(T)/2021 <a href="#">↗</a>	O	Hämeenlinna. Vanaja...Areas and borders. Vertical Clearances

## Kokemäijoki watercourse

T&P	Charts	Kokemäijoki watercourse
-	-	

## Oulujoki watercourse

T&P	Charts	Oulujoki watercourse
-	-	

## Paatsjoki watercourse

T&P	Charts	Paatsjoki watercourse
-	-	

## Saimaa Canal

T&P	Charts	Saimaa Canal
-	-	

## Northern Baltic

T&P	Charts	Northern Baltic
-	-	

## Announcements

T&P	Charts	Announcements
219(T)/2022 <a href="#">↗</a>		Geta. Saltvik. Vårdö. Geotechnical seabed surveys.
291(T)/2022 <a href="#">↗</a>		Bay of Bothnia. Off Oulu. V-AIS. Notice repeated.
3(T)/2023 <a href="#">↗</a>		Saimaa Canal. Saimaa Canal closed.