



Notices to Mariners

NtM 7/2023

Notices: 43 - 48 / 10.03.2023



Table of Contents

Title	Page
Index by Area	2
Index by Chart	3
Gulf of Finland	4
Bay of Bothnia	7
Announcements	11
Current Preliminary (P) and Temporary (T) notices (10.03.2023)	12

Index by Area

Gulf of Finland

Charts

*43/2023	19, 20, B
44/2023	952, A, B
*45/2023	14, 138, A
*46/2023	138

Bay of Bothnia

Charts

*47(T)/2023	57, 119, 845, 846
-------------	-------------------

Announcements

Charts

*48/2023

Index by Chart

Charts	Notices
14	*45/2023
19	*43/2023
20	*43/2023
57	*47(T)/2023
119	*47(T)/2023
138	*45/2023, *46/2023
845	*47(T)/2023
846	*47(T)/2023
952	44/2023
A	44/2023, *45/2023
B	*43/2023, 44/2023

Gulf of Finland

*43/2023

2023-03-08

Finland. Gulf of Finland. Ingå. Hästgrund. Buoyage

Charts

19	(INT 1251)	31/2023 ↗
20	(INT 1252)	/
B631		40/2023 ↗

Previous

1 19, 20, B631

Amend    59°54.250'N 24°11.132'E 52003

(Traficom, Helsinki/Helsingfors 2023)

44/2023

2023-03-08

Estonia. Gulf of Finland. Aksi. Light Aksi operational. Buoyage



Charts


952		37/2023 ↗
A/Helsinki - Tallinna		40/2023 ↗
B/Helsinki - Tallinn		43/2023 ↗

Previous

Cancelled: 22(T)/2023 [↗](#)

1 952, A/Helsinki - Tallinna, B/Helsinki - Tallinn

Amend   59°35.73'N 25°05.89'E

AKSI
Fl.G.3s
(exting)  AKSI
Fl.G.3s

(NtM 3/25, Tallinn 2023)

*45/2023

2023-03-08

Finland. Gulf of Finland. Kotka. Mussalo. Fairway areas

Charts		Previous
14	(INT 1246)	31/2023 ↗
138	(INT 1155)	288/2022 ↗
A610, A610.1, A611		44/2023 ↗

Cancelled: 2(T)/2022 [↗](#)

1 Amend **10₆** → **11₅** 14, 138, A610, A610.1, A611

60°25.41'N 26°54.50'E

2

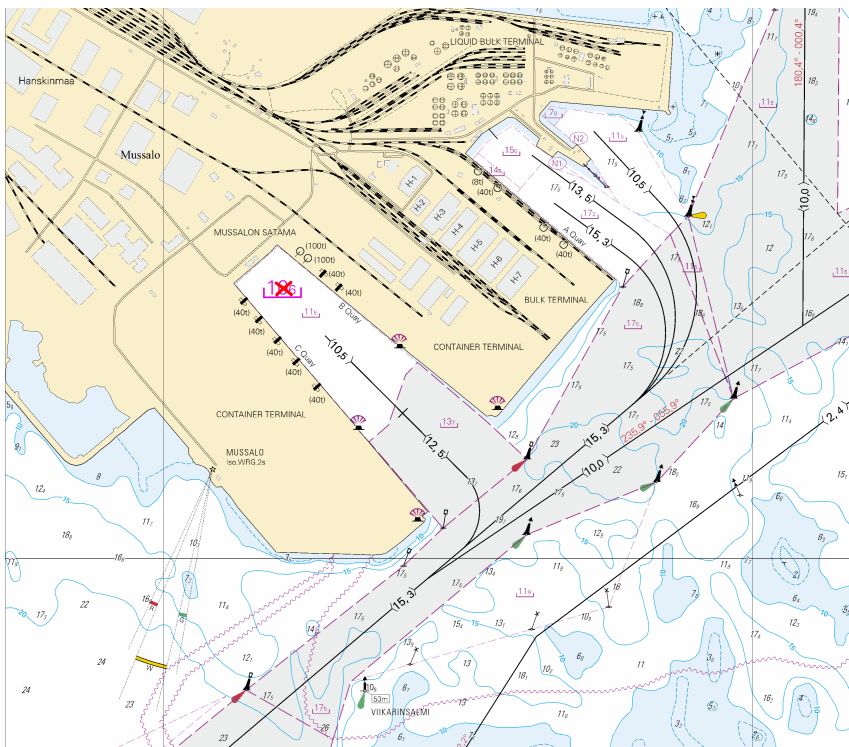


Image for reference, chart extracts not to scale of chart.

(Traficom, Helsinki/Helsingfors 2023)

*46/2023

2023-03-08

Finland. Gulf of Finland. Kotka. Hietanen. Depths

Charts

138

Previous

(INT 1155)

45/2023 [↗](#)

Cancelled: 262(T)/2021 [↗](#)

1 Amend 7₅ ➔ 8₅ 138

60°29.420'N 26°56.650'E

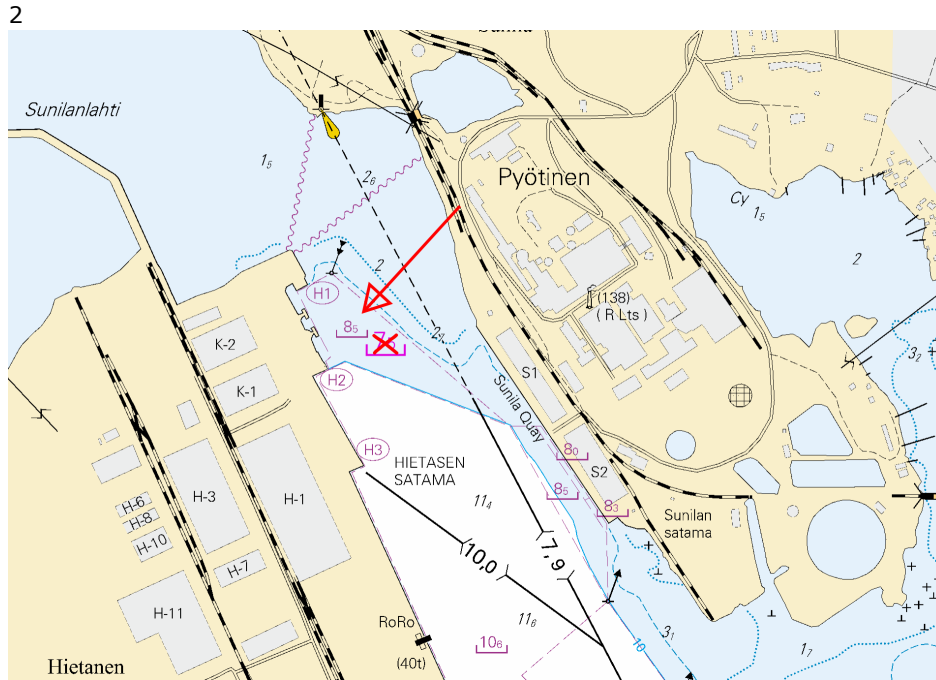


Image for reference, chart extracts not to scale of chart.

(Traficom, Helsinki/Helsingfors 2023)

Bay of Bothnia

*47(T)/2023

2023-03-10

Finland. Bay of Bothnia. Port of Oulu. (N2000) (BSCD2000). Notice repeated. Depths. Fairways. Fairway areas

Charts		Previous
57	(INT 1148)	35/2023 ↗
119.B	(INT 11461)	207/2022 ↗
845		207/2022 ↗
846, 846.A		208/2022 ↗

Time: to approx. 23 March 2024

Cancelled: 73(T)/2022 [↗](#), 72(T)/2022 [↗](#)


1 57, 119.B, 846, 846.A

Amend *11,3m*  10₁ 65°00.31'N 25°23.84'E

2 119.B, 846.A

Amend *6,8m*  6₅ 65°00.32'N 25°24.03'E

3 57, 119.B, 845, 846, 846.A

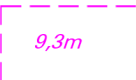





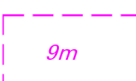




Add *9,6m*  9,6m

Between the following positions:
Delete former edge line

(1)	65°00.021'N	25°24.341'E
(2)	64°59.977'N	25°24.661'E
(3)	64°59.964'N	25°24.686'E
(4)	64°59.963'N	25°24.730'E
(5)	64°59.836'N	25°24.982'E
(6)	64°59.852'N	25°25.029'E
(7)	64°59.850'N	25°25.083'E
(8)	64°59.867'N	25°25.151'E
(9)	64°59.977'N	25°24.987'E
(10)	65°00.015'N	25°24.938'E
(11)	65°00.120'N	25°24.839'E
(12)	65°00.144'N	25°24.807'E
(13)	65°00.113'N	25°24.413'E
(14)	65°00.144'N	25°24.025'E

4 57, 119.B, 845, 846, 846.A

Amend *10,8m*  9,6m 65°00.09'N 25°24.47'E

5		57, 119.B, 845, 846, 846.A			
Add		Between the following positions:	(1)	65°00.015'N	25°24.938'E
		Delete former edge line	(2)	65°00.120'N	25°24.839'E
			(3)	65°00.185'N	25°25.156'E
			(4)	65°00.172'N	25°25.251'E
6		57, 119.B, 845, 846, 846.A			
Add		Between the following positions:	(1)	65°00.120'N	25°24.839'E
		Delete former edge line	(2)	65°00.185'N	25°25.156'E
			(3)	65°00.172'N	25°25.251'E
			(4)	65°00.182'N	25°25.271'E
			(5)	65°00.190'N	25°25.251'E
			(6)	65°00.348'N	25°25.693'E
			(7)	65°00.371'N	25°25.652'E
			(8)	65°00.195'N	25°25.082'E
			(9)	65°00.144'N	25°24.807'E
7		57, 119.B, 845, 846, 846.A			
Amend	 → 			65°00.15'N	25°24.90'E
8		119.B, 846.A			
Amend	 → 			65°00.35'N	25°25.61'E
9		57, 119.B, 845, 846, 846.A			
Add		Between the following positions:	(1)	65°00.009'N	25°24.331'E
			(2)	65°00.021'N	25°24.341'E
			(3)	64°59.964'N	25°24.641'E
			(4)	64°59.964'N	25°24.686'E
			(5)	64°59.977'N	25°24.661'E
10		119.B, 846.A			
Amend	 → 			64°59.94'N	25°24.75'E
11		57, 119.B, 845, 846, 846.A			
Add		Between the following positions:	(1)	64°59.921'N	25°24.770'E
		Delete former edge line	(2)	64°59.931'N	25°24.798'E
			(3)	64°59.864'N	25°24.927'E
			(4)	64°59.854'N	25°24.898'E
12		57, 119.B, 845, 846, 846.A			
Add		Between the following positions:	(1)	64°59.854'N	25°24.898'E
		Delete former edge line	(2)	64°59.864'N	25°24.927'E
			(3)	64°59.826'N	25°25.002'E
			(4)	64°59.816'N	25°24.974'E

Announcements

*48/2023

2023-03-10

Finland. Survey on AIS aids to navigation.

Charts

Previous

References:30/2023 [🔗](#)

1

Dear respondent,

The Finnish Transport and Communications Agency (Traficom) is conducting a survey in cooperation with Transport Infrastructure agency and Fintraffic, regarding the understandability and reliability of AIS aids to navigation (AIS-AtoN) on merchant shipping vessels. We strive to continuously develop our services and we would like your feedback.

Please find the questionnaire in English here <https://link.webropolsurveys.com/S/B6DCC99DB78E829A>

(Traficom, Helsinki/Helsingfors 2023)

Current Preliminary (P) and Temporary (T) notices (10.03.2023)

Gulf of Finland

T&P	Charts	Gulf of Finland
174(T)/2019 ↗	951	SE of Bol'soj Tjuters. Obstructions
296(T)/2020 ↗	17, 18, 191, 952, A, B	Helsinki. Sipoo. Areas and borders
19(T)/2021 ↗	951, A	NW of Gogland. Light Severnyj Virgin extinguished. Notice repeated. Buoyage
20(T)/2021 ↗	951, A	TSS OFF ROOSHER ISLAND. Lighthouse Rodser extinguished. Notice repeated. Buoyage
226(T)/2021 ↗	22, 952, 953, 954, B	Off Hanko. Lighthouse Russarö. Maintenance work. Buoyage
228(T)/2021 ↗	951, A	Krestovyj. Lighthouse Krestovyj extinguished. Notice repeated. Buoyage
296(T)/2021 ↗	18, 191, A, B	Kruunuvuori. Korkeasaari...Cultural Features. Vertical Clearances
303(T)/2021 ↗	18, 191, A, B	Helsinki. Hernesaari. Notice repeated. Buoyage
304(T)/2021 ↗	18, 192, A, B	Helsinki. Vuosaari. Notice repeated. Buoyage. Areas and borders
65(T)/2022 ↗	A, S	Vyborg. Destroyed leading beacon. Notice repeated. Buoyage
66(T)/2022 ↗	A, S	Vyborg. Light extinguished. Notice repeated. Buoyage
86(T)/2022 ↗	18, 191, 952, A, B	Helsinki. Kruunuvuori. Restrictions on small craft traffic. Fairways
90(T)/2022 ↗	951	Tiskolovo. Lighthouse Kajbolovo. Buoyage
115(T)/2022 ↗	14, 951, A	Kotka. NW of Kirkonmaa. Light Kiviletto extinguished. Buoyage
181(T)/2022 ↗	19, 132, B	Siuntio. Båtviken. Dredging operations. Areas and borders
193(T)/2022 ↗	14, 138, A	Kotka. Mussalo harbour...Notice repeated. Areas and borders
196(T)/2022 ↗	951	Narva Bay. Areas and borders
226(T)/2022 ↗	18, 191, A, B	Helsinki. Sompasaari. Crown Bridges. Notice repeated. Buoyage
232(T)/2022 ↗	18, 191, A, B	Helsinki. Hernesaari. Notice repeated. Buoyage. Areas and borders
266(T)/2022 ↗	18, 191, A, B	Helsinki. Sompasaari...Notice repeated. Areas and borders

Archipelago Sea

T&P	Charts	Archipelago Sea
107(T)/2021 ↗	26, 190, D	Naantali. Raumakari...Kirkonsalmi. Rafts with seal repellent systems. Buoyage
252(T)/2022 ↗	26, 190, D	Raisio. Dockyard. Areas and borders
253(T)/2022 ↗	26, D	Pargas. Kirjala. Hessund. Bridge repair works. Areas and borders
15(T)/2023 ↗	27, 167, D	Pargas. S of Utö. Buoyage
19(T)/2023 ↗	26, D	Pargas. Hessund. Channel closed. Areas and borders

Aland Sea

T&P	Charts	Aland Sea
-	-	

Bothnian Sea

T&P	Charts	Bothnian Sea
30(T)/2022 ↗	41, 127, E	Rauma. Ulko-Petäjäs. Areas and borders
148(T)/2022 ↗	956	Härnösand. Vårdkasberget. Maintenance of aids to navigation. Buoyage
160(T)/2022 ↗	41, 127, E	Rauma. Otanlahti. Flytande ö. Obstructions
1(T)/2023 ↗	42, 125, E	Pori. Tahkoluoto. Buoyage

The Quark

T&P	Charts	The Quark
340(T)/2021 ↗	48, 115, F	Vaasa. Vaskiluoto. Buoyage
237(T)/2022 ↗	48, 115, 956, 957, F	Vaasa. Vaskiluoto. Notice repeated. Fairways
238(T)/2022 ↗	48, 115, 921, F, M	Vaasa. Vaskiluoto. Notice repeated. Buoyage
239(T)/2022 ↗	48, 115, 956, 957, F	Vaasa. Vaskiluoto. Notice repeated. Depths. Buoyage. Fairways. Fairway areas
260(T)/2022 ↗	47, 48, 956, 957, F	Buoys and spar buoys temporarily withdrawn for the winter. Virtual AIS. Buoyage
25(T)/2023 ↗	47, 956, 957, F	TSS IN NORRA KVARKEN. TSS and two-way routes "in Norra Kvarken" temporarily ...

Bay of Bothnia

T&P	Charts	Bay of Bothnia
77(T)/2022 ↗	54, G	Pyhäjoki. Hanhikivi. Notice repeated. Buoyage
187(T)/2022 ↗	60, 958, 8071	Hailuoto. Edge mark Holma extinguished. Buoyage
256(T)/2022 ↗	60, 958, 8071	Off Oulu. Light buoy withdrawn for the winter. Virtual AIS. Buoyage
47(T)/2023 ↗	57, 119, 845, 846	Port of Oulu. (N2000) (BSCD2000)...Depths. Fairways. Fairway areas

Vuoksi watercourse

T&P	Charts	Vuoksi watercourse
268(T)/2019 ↗	M	Kuopio. Kotkatniemi. Buoyage
214(T)/2020 ↗		Leppävirta. Hyvärilä. Buoyage
235(T)/2020 ↗	921, M	Kuopio. Avoluoto. Notice repeated. Buoyage
180(T)/2022 ↗	L	Lappeenranta. Porkka. Light Luovukkaluoto. Buoyage

Kymijoki watercourse

T&P	Charts	Kymijoki watercourse
272(T)/2021 ↗	O	Hämeenlinna. Vanaja...Areas and borders. Vertical Clearances

Kokemäijoki watercourse

T&P	Charts	Kokemäijoki watercourse
-	-	

Oulujoki watercourse

T&P	Charts	Oulujoki watercourse
-	-	

Paatsjoki watercourse

T&P	Charts	Paatsjoki watercourse
-	-	

Saimaa Canal

T&P	Charts	Saimaa Canal
-	-	

Northern Baltic

T&P	Charts	Northern Baltic
-	-	

Announcements

T&P	Charts	Announcements
219(T)/2022 🔗		Geta. Saltvik. Vårdö. Geotechnical seabed surveys.
291(T)/2022 🔗		Bay of Bothnia. Off Oulu. V-AIS. Notice repeated.
3(T)/2023 🔗		Saimaa Canal. Saimaa Canal closed.