



Notices to Mariners

NtM 9/2023

Notices: 61 - 64 / 31.03.2023



Table of Contents

Title	Page
Index by Area	2
Index by Chart	3
Gulf of Finland	4
Announcements	6
Current Preliminary (P) and Temporary (T) notices (31.03.2023)	7

Index by Area

Gulf of Finland

Charts

*61(T)/2023

14, 138, A

*62/2023

15, 101, 951, A

Announcements

Charts

*63/2023

*64/2023

Index by Chart

Charts	Notices
14	*61(T)/2023
15	*62/2023
101	*62/2023
138	*61(T)/2023
951	*62/2023
A	*61(T)/2023, *62/2023

Gulf of Finland

*61(T)/2023

2023-03-27

Finland. Gulf of Finland. Kotka. Mussalo harbour. Restrictions on small craft traffic. Notice repeated. Areas and borders

Charts		Previous
14	(INT 1246)	51/2023 ↗
138	(INT 1155)	46/2023 ↗
A610, A610.1, A611		52/2023 ↗

Time: to approx. 31 October 2023

Cancelled: 193(T)/2022 [↗](#)

1

Construction work in progress in the area marked in the chartlet. Vessels navigating in the area are advised to reduce their speed and avoid creating wash in the vicinity of the work vessels. The recommended speed limit 10 knots between 60°24.10'N 26°53.50'E - 60°25.40'N 26°55.90'E, see image. Work teams monitor VHF channels 67 and 72.

2

14, 138, A610, A610.1, A611

Add

Construction works

(1)	60°24.73'N	26°54.17'E
(2)	60°25.12'N	26°53.58'E
(3)	60°25.27'N	26°54.00'E
(4)	60°25.04'N	26°54.85'E
(5)	60°25.02'N	26°54.88'E
(6)	60°24.73'N	26°54.17'E

3

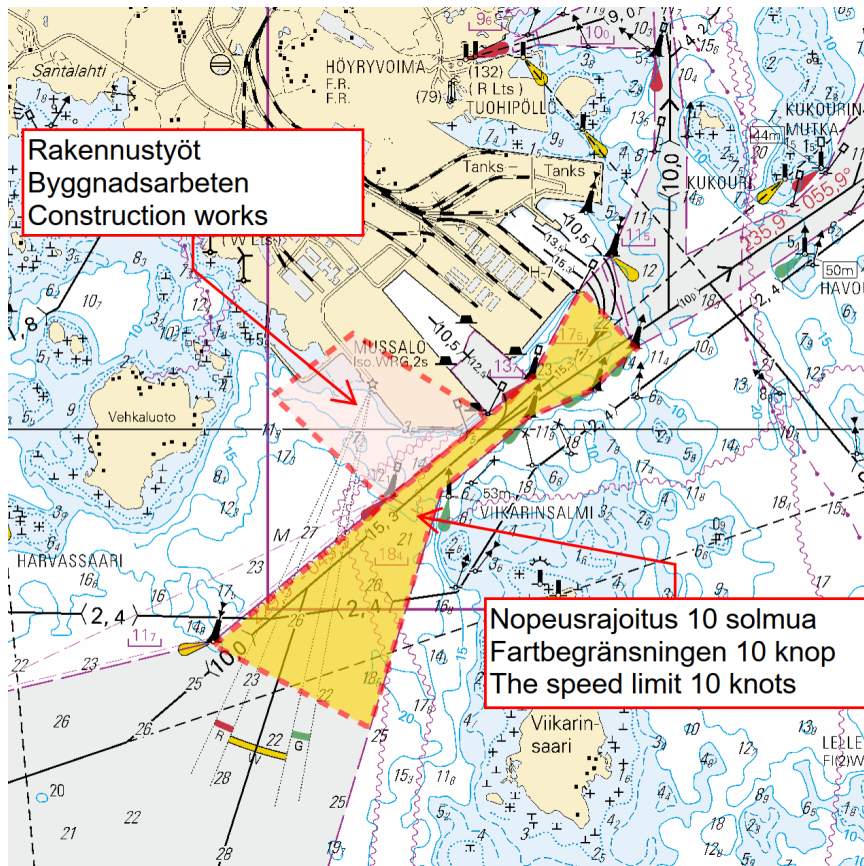


Image for reference, chart extracts not to scale of chart.

*62/2023

2023-03-31

Finland. Gulf of Finland. Loviisa. Orrengrundsfjärden. Buoyage

Charts

Previous

15	(INT 1247)	20/2023 ↗
101.C	(INT 12461)	233/2022 ↗
951		52/2023 ↗
A614		61/2023 ↗

1 15, 101.C, 951, A614

Move



LÅLÄTTA

Q(2)WRG.6s

Sector light

From

60°17.198'N 26°33.072'E

To

60°17.234'N 26°33.094'E 120, (C5349)

2 15, 101.C, 951, A614

Amend



LÅLÄTTA

Q(2)WRG.6s

R

040,0°-052,0°

W

052,0°-062,5°

G

062,5°-150,0°

W

150,0°-152,5°

R

152,5°-188,0°

G

188,0°-213,0°

W

213,0°-222,0°

R

222,0°-232,0°



LÅLÄTTA

Q(2)WRG.6s

R

040,0°-051,5°

W

051,5°-061,0°

G

061,0°-142,0°

W

142,0°-151,5°

R

151,5°-188,0°

G

188,0°-213,0°

W

213,0°-222,0°

R

222,0°-232,0°

Sector light

60°17.234'N 26°33.094'E 120, (C5349)

(Traficom, Helsinki/Helsingfors 2023)

Announcements

*63/2023

2023-03-31

Finland. Survey on AIS aids to navigation.

Charts

Previous

References:60/2023 [↗](#)

1

Dear respondent,

The Finnish Transport and Communications Agency (Traficom) is conducting a survey in cooperation with Transport Infrastructure agency and Fintraffic, regarding the understandability and reliability of AIS aids to navigation (AIS-AtoN) on merchant shipping vessels. We strive to continuously develop our services and we would like your feedback.

Please find the questionnaire in English here <https://link.webropolsurveys.com/S/B6DCC99DB78E829A>

(Traficom, Helsinki/Helsingfors 2023)

*64/2023

2023-03-31

Finland. Finnish coastal waters and inland waterways. Spring inspection of floating aids to navigation. Warning.

Charts

Previous

1

Mariners who use channels marked by floating aids to navigation are cautioned that these aids may be out of position, damaged or unlit. The inspection of spar buoys and buoys performed after the winter season lasts several weeks.

(Traficom, Helsinki/Helsingfors 2023)

Current Preliminary (P) and Temporary (T) notices (31.03.2023)

Gulf of Finland

T&P	Charts	Gulf of Finland
174(T)/2019 ↗	951	SE of Bol'soj Tjuters. Obstructions
296(T)/2020 ↗	17, 18, 191, 952, A, B	Helsinki. Sipoo. Areas and borders
19(T)/2021 ↗	951, A	NW of Gogland. Light Severnyj Virgin extinguished. Notice repeated. Buoyage
20(T)/2021 ↗	951, A	TSS OFF ROOSHER ISLAND. Lighthouse Rodser extinguished. Notice repeated. Buoyage
228(T)/2021 ↗	951, A	Krestovyj. Lighthouse Krestovyj extinguished. Notice repeated. Buoyage
296(T)/2021 ↗	18, 191, A, B	Kruunuvuori. Korkeasaari...Cultural Features. Vertical Clearances
303(T)/2021 ↗	18, 191, A, B	Helsinki. Hernesaari. Notice repeated. Buoyage
304(T)/2021 ↗	18, 192, A, B	Helsinki. Vuosaari. Notice repeated. Buoyage. Areas and borders
65(T)/2022 ↗	A, S	Vyborg. Destroyed leading beacon. Notice repeated. Buoyage
66(T)/2022 ↗	A, S	Vyborg. Light extinguished. Notice repeated. Buoyage
86(T)/2022 ↗	18, 191, 952, A, B	Helsinki. Kruunuvuori. Restrictions on small craft traffic. Fairways
90(T)/2022 ↗	951	Tiskolovo. Lighthouse Kajbolovo. Buoyage
181(T)/2022 ↗	19, 132, B	Siuntio. Båtviken. Dredging operations. Areas and borders
196(T)/2022 ↗	951	Narva Bay. Areas and borders
226(T)/2022 ↗	18, 191, A, B	Helsinki. Sompasaari. Crown Bridges. Notice repeated. Buoyage
232(T)/2022 ↗	18, 191, A, B	Helsinki. Hernesaari. Notice repeated. Buoyage. Areas and borders
266(T)/2022 ↗	18, 191, A, B	Helsinki. Sompasaari...Notice repeated. Areas and borders
61(T)/2023 ↗	14, 138, A	Kotka. Mussalo harbour...Notice repeated. Areas and borders

Archipelago Sea

T&P	Charts	Archipelago Sea
107(T)/2021 ↗	26, 190, D	Naantali. Raumakari...Kirkonsalmi. Rafts with seal repellent systems. Buoyage
253(T)/2022 ↗	26, D	Pargas. Kirjala. Hessund. Bridge repair works. Areas and borders
15(T)/2023 ↗	27, 167, D	Pargas. S of Utö. Buoyage
19(T)/2023 ↗	26, D	Pargas. Hessund. Channel closed. Areas and borders

Aland Sea

T&P	Charts	Aland Sea
-	-	

Bothnian Sea

T&P	Charts	Bothnian Sea
30(T)/2022	41, 127, E	Rauma. Ulko-Petäjäs. Areas and borders
148(T)/2022	956	Härnösand. Vårdkasberget. Maintenance of aids to navigation. Buoyage
160(T)/2022	41, 127, E	Rauma. Otanlahti. Flytande ö. Obstructions
1(T)/2023	42, 125, E	Pori. Tahkoluoto. Buoyage

The Quark

T&P	Charts	The Quark
340(T)/2021	48, 115, F	Vaasa. Vaskiluoto. Buoyage
237(T)/2022	48, 115, 956, 957, F	Vaasa. Vaskiluoto. Notice repeated. Fairways
238(T)/2022	48, 115, 921, F, M	Vaasa. Vaskiluoto. Notice repeated. Buoyage
239(T)/2022	48, 115, 956, 957, F	Vaasa. Vaskiluoto. Notice repeated. Depths. Buoyage. Fairways. Fairway areas
260(T)/2022	47, 48, 956, 957, F	Buoys and spar buoys temporarily withdrawn for the winter. Virtual AIS. Buoyage
25(T)/2023	47, 956, 957, F	TSS IN NORRA KVARKEN. TSS and two-way routes "in Norra Kvarken" temporarily ...
57(T)/2023	957, F	S of Umeå. Light Fjärdgrund extinguished. Buoyage

Bay of Bothnia

T&P	Charts	Bay of Bothnia
77(T)/2022	54, G	Pyhäjoki. Hanhikivi. Notice repeated. Buoyage
256(T)/2022	60, 958, 8071	Off Oulu. Light buoy withdrawn for the winter. Virtual AIS. Buoyage
47(T)/2023	57, 119, 845, 846	Port of Oulu. (N2000) (BSCD2000)...Depths. Fairways. Fairway areas

Vuoksi watercourse

T&P	Charts	Vuoksi watercourse
268(T)/2019 ↗	M	Kuopio. Kotkatniemi. Buoyage
214(T)/2020 ↗		Leppävirta. Hyvärilä. Buoyage
235(T)/2020 ↗	921, M	Kuopio. Avoluoto. Notice repeated. Buoyage
180(T)/2022 ↗	L	Lappeenranta. Porkka. Light Luovukkaluoto. Buoyage

Kymijoki watercourse

T&P	Charts	Kymijoki watercourse
-	-	

Kokemäijoki watercourse

T&P	Charts	Kokemäijoki watercourse
-	-	

Oulujoki watercourse

T&P	Charts	Oulujoki watercourse
-	-	

Paatsjoki watercourse

T&P	Charts	Paatsjoki watercourse
-	-	

Saimaa Canal

T&P	Charts	Saimaa Canal
-	-	

Northern Baltic

T&P	Charts	Northern Baltic
-	-	

Announcements

T&P	Charts	Announcements
291(T)/2022 ↗		Bay of Bothnia. Off Oulu. V-AIS. Notice repeated.
3(T)/2023 ↗		Saimaa Canal. Saimaa Canal closed.
53(T)/2023 ↗		Geta. Saltvik. Vårdö. Geotechnical seabed surveys. Notice repeated.