



# Notices to Mariners

## NtM 14/2024

Notices: 107 - 113 / 20.05.2024



# Table of Contents

<b>Title</b>	<b>Page</b>
Index by Area	2
Index by Chart	3
Archipelago Sea	4
The Quark	6
Bay of Bothnia	7
Announcements	10
Current Preliminary (P) and Temporary (T) notices (20.05.2024)	15

# Index by Area

## Archipelago Sea

### Charts

\*110(T)/2024 23, 25, 26, 37, B, D

## The Quark

### Charts

\*107/2024 47, 825, 956, 957, 8065

## Bay of Bothnia

### Charts

\*111/2024 55, 119, 838, 839, 958, 8071

113/2024 52, 53, 54, 55, 834, 835, 837, 838, 957, 958

## Announcements

### Charts

\*108/2024

\*109/2024

\*112/2024

# Index by Chart

<b>Charts</b>	<b>Notices</b>
23	*110(T)/2024
25	*110(T)/2024
26	*110(T)/2024
37	*110(T)/2024
47	*107/2024
52	113/2024
53	113/2024
54	113/2024
55	*111/2024, 113/2024
119	*111/2024
825	*107/2024
834	113/2024
835	113/2024
837	113/2024
838	*111/2024, 113/2024
839	*111/2024
956	*107/2024
957	*107/2024, 113/2024
958	*111/2024, 113/2024
8065	*107/2024
8071	*111/2024
B	*110(T)/2024
D	*110(T)/2024

# Archipelago Sea

\*110(T)/2024

2024-05-20








Finland. Archipelago Sea. Salo. Pargas. Buoyage

Charts		Previous
23, 23.X	(INT 1186)	72/2024 <a href="#">↗</a>
25	(INT 1188)	73/2024 <a href="#">↗</a>
26	(INT 1189)	96/2024 <a href="#">↗</a>
37	(INT 1198)	73/2024 <a href="#">↗</a>
B641, B642, B642.1, B643		98/2024 <a href="#">↗</a>
D707, D708, D718		99/2024 <a href="#">↗</a>

Time: to approx. 31 December 2029

1

The University of Turku is conducting sediment surveys in the Archipelago Sea until about December 2029. 8 samplers have been moored to the seabed and, during the open water season, these are marked with red ODAS buoys. Some of the buoys are equipped with radar reflectors and all buoys are equipped with reflective tape.

2	Add 	23.X, B642, B642.1	60°21.662'N	23°04.385'E
3	Add 	23.X, B642	60°19.164'N	23°02.000'E
4	Add 	23, B642	60°16.348'N	22°57.444'E
5	Add 	23, B642	60°13.778'N	22°54.302'E
6	Add 	23, B642, B643	60°12.273'N	22°52.293'E
7	Add 	23, B641	60°08.452'N	22°54.077'E
8	Add 	25, 26, 37, D708	60°14.189'N	22°02.724'E



10



Image for reference, chart extracts not to scale of chart.

(Turun yliopisto, Åbo universitet, University of Turku 2024)

---

---

# The Quark

\*107/2024

2024-05-17

Sweden. The Quark. TSS IN NORRA KVARKEN. TSS and two-way routes "in Norra Kvarken" has been opened to traffic. Areas and borders

Charts	Previous
47	(INT 1138) <a href="#">267/2023</a>
825	<a href="#">267/2023</a>
956	<a href="#">77/2024</a>
957	(INT 1208) <a href="#">101/2024</a>
8065/Vaasa - Uumaja	<a href="#">62/2024</a>

Cancelled: 267(T)/2023

1	47, 825, 956, 957, 8065/Vaasa - Uumaja
Add	Between the following positions:
	(1) 63°25.3'N 20°34.8'E
	(2) 63°35.1'N 21°03.7'E

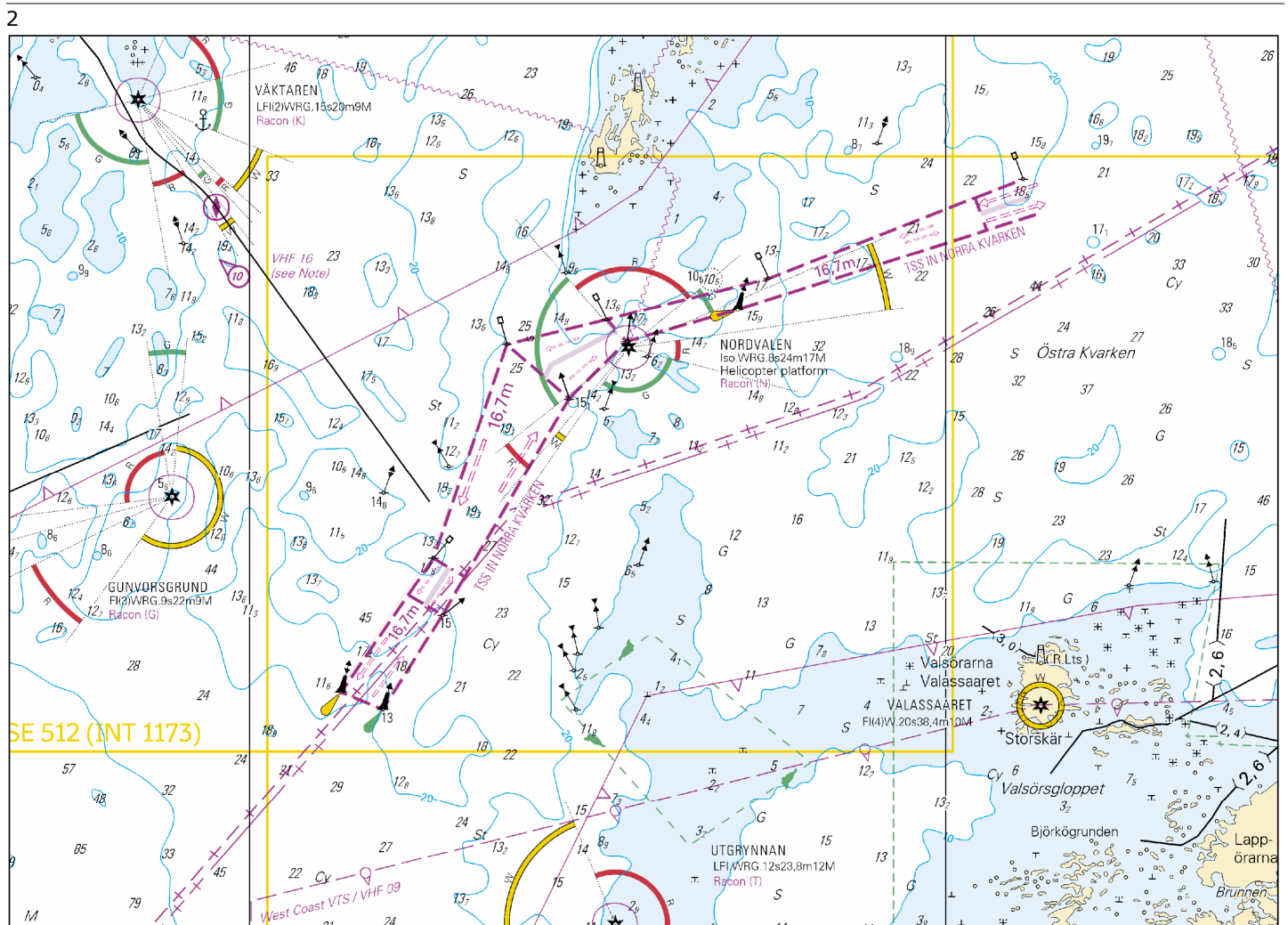


Image for reference, chart extracts not to scale of chart.

(Swedish Transport Agency, Norrköping 2024)

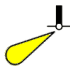
# Bay of Bothnia

\*111/2024

2024-05-20

Finland. Bay of Bothnia. Raahe. Buoyage

Charts		Previous
55	(INT 1146)	101/2024 <a href="#">↗</a>
119.A	(INT 11461)	92/2024 <a href="#">↗</a>
838		101/2024 <a href="#">↗</a>
839, 839.A		263/2023 <a href="#">↗</a>
958	(INT 1209)	101/2024 <a href="#">↗</a>
8071/INDEX		85/2024 <a href="#">↗</a>

1	55, 119.A, 838, 839, 839.A, 958, 8071/INDEX			
Move		Rear	<b>From</b>	
	HEIKINKARI		64°39.156'N	24°23.967'E
	Iso.4s		<b>To</b>	
			64°39.148'N	24°23.723'E 9032, (C4184.1)

(Traficom, Helsinki/Helsingfors 2024)

113/2024

2024-05-20

Finland. Bay of Bothnia. Kokkola. Lohtaja. Firing exercise. Areas and borders

Charts		Previous
52	(INT 1143)	101/2024 <a href="#">↗</a>
53	(INT 1144)	101/2024 <a href="#">↗</a>
54	(INT 1145)	101/2024 <a href="#">↗</a>
55	(INT 1146)	111/2024 <a href="#">↗</a>
834		101/2024 <a href="#">↗</a>
835		101/2024 <a href="#">↗</a>
837		101/2024 <a href="#">↗</a>
838		111/2024 <a href="#">↗</a>
957	(INT 1208)	107/2024 <a href="#">↗</a>
958	(INT 1209)	111/2024 <a href="#">↗</a>

Cancelled: 101(T)/2024 [↗](#)

1  
Firing exercise in week 20 in the Lohtaja area. The danger area extends to the sea area.  
Mariners in the area are requested to monitor the navigational warnings and radio communications with great attention.

Enquiries: phone 358 299 442 780. <https://puolustusvoimat.fi/en/current-issues/firings-and-noise>

Add

Danger area

(1)	63°55.09'N	22°28.08'E
(2)	63°57.23'N	23°09.18'E
(3)	63°59.86'N	23°21.92'E
(4)	64°09.98'N	23°25.27'E
(5)	64°24.72'N	23°56.28'E
(6)	64°35.07'N	24°06.47'E
(7)	64°43.77'N	23°55.17'E
(8)	64°48.08'N	23°40.09'E
(9)	64°49.15'N	23°21.47'E
(10)	64°43.58'N	22°59.20'E
(11)	64°32.97'N	22°47.06'E
(12)	64°33.57'N	22°44.82'E
(13)	64°14.75'N	22°19.05'E
(14)	64°01.45'N	22°18.72'E

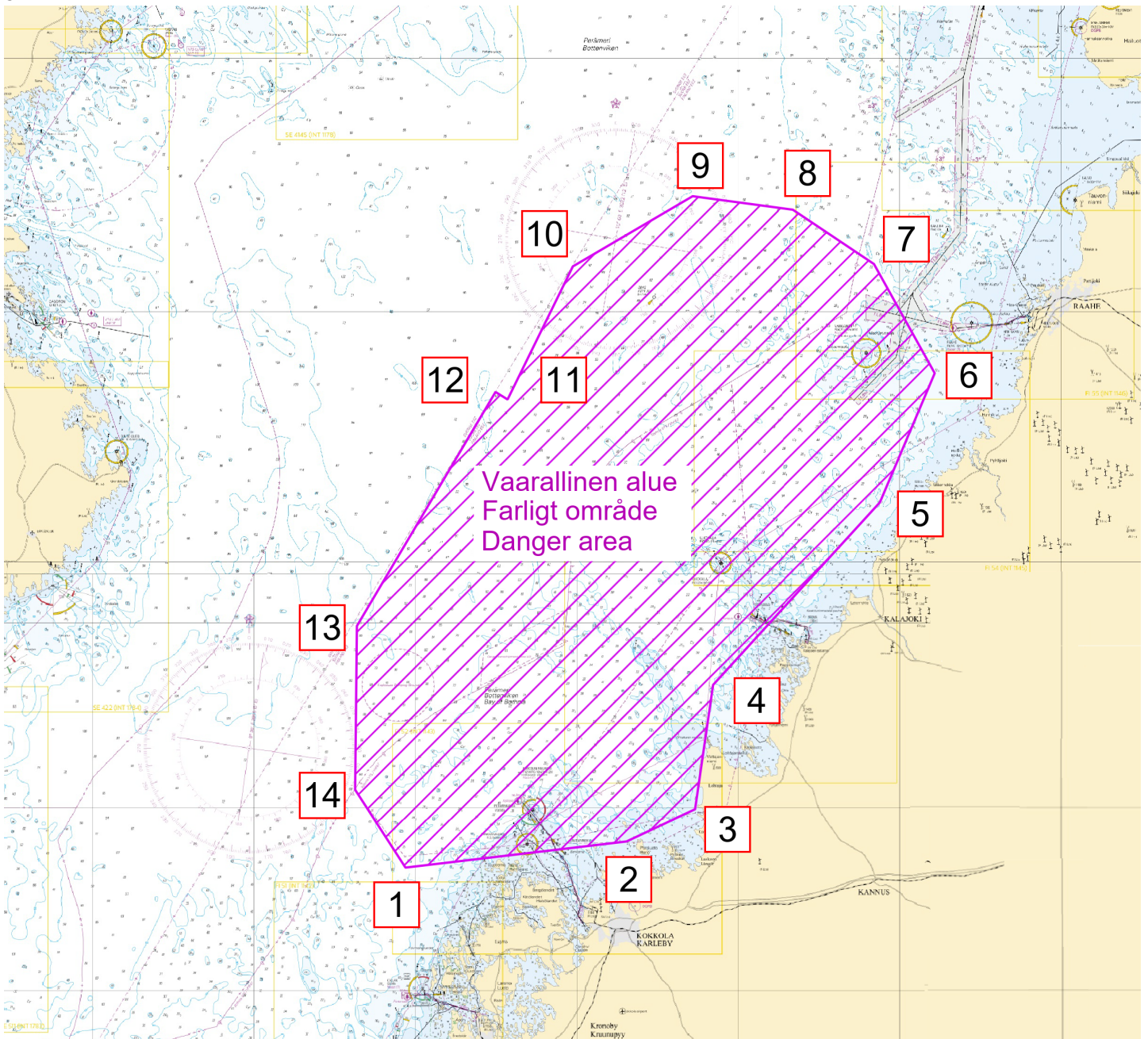


Image for reference, chart extracts not to scale of chart.



# Announcements

\*108/2024

2024-05-20

Finland. New N2000 charts between Rauma - Uusikaupunki.

**Charts**

**Previous**

References: 104/2024 [↗](#)

---

1

South of Uusikaupunki, at the border between N2000 charts and mean sea level charts (MSL) some of the long fairways continue outside of published new N2000 charts. This applies to Isokari-Lövskär and Lypertö channels. Information for these fairways will be updated in the Sailing directions for Finnish waters later.

Using the correct water level information is emphasized in these areas. See attachments.

Kuva 3. Printed charts (1:50 000)- N2000 boundary of the publishing area 15.5.2024

Kuva 4. Electronic charts (ENC approach)- N2000 boundary of the publishing area 15.5.2024

Small-scale charts of the new publishing area (General Chart 955 and General ENC FI29SOBS) are still mean sea level charts (MSL).

The N2000 reform is proceeding towards Åland. The next charts from Uusikaupunki to Eckerö will be published in the autumn 2024. The Sailing directions for Finnish waters and fairway cards has also been updated. Up-to-date information of vertical reference systems used on charts: <https://www.traficom.fi/en/finnish-nautical-charts-portfolio>

More information about the N2000 fairway and nautical chart reform: <https://www.traficom.fi/en/transport/maritime/n2000-fairway-and-nautical-chart-reform-improved>

Sailing Directions for Finnish waters: <https://www.traficom.fi/en/services/sailing-directions-finnish-waters>

N2000 fairway and nautical chart reform: <https://www.traficom.fi/en/transport/maritime/n2000-fairway-and-nautical-chart-reform-improved>

Fairway cards: <https://vayla.fi/en/service-providers/merchant-shipping/navigating/fairway-cards>

N2000 Sea level: <https://en.ilmatieteenlaitos.fi/sea-level>

Uusia N2000 -merikarttoja väliltä Rauma-Uusikaupunki:

Nya N2000 -sjökort mellan Raumo - Nystad:

New charts between Rauma-Uusikaupunki:

Painetut, tryckta, printed :

40 Isokari, Enskär	Ed 6, TM 12 / 30.4.2024
41 Rauma, Raumo	Ed 7, TM 12 / 30.4.2024
127 Rauma, Raumo (satama, hamn, port)	Ed 3, TM 12 / 30.4.2024

ENC:

Rauma, Raumo	FI4EIN6C	ed. 7
Sandbäck	FI4EIM2A	ed. 5
Uusikaupunki, Nysatad	FI4EIM2C	ed. 7
Hylkkari	FI4EIM2E	ed. 3
Isokari, Enskär	FI4EIKYC	ed. 7
Kustavi, Gustavs	FI4EIKYD	ed. 6
Taivassalo, Tövsala - Askainen, Villnäs	FI4EIKYE	ed. 2
Rauma, Raumo	FI5127M1	ed. 4
Uusikaupunki, Nysatad, Lypyrntti, Lypertö, Lyökki, Lökö	FI5A056A	ed. 3
Rauma, Raumo harbour	FI6127M2	ed. 3

Image for reference, chart extracts not to scale of chart.

3

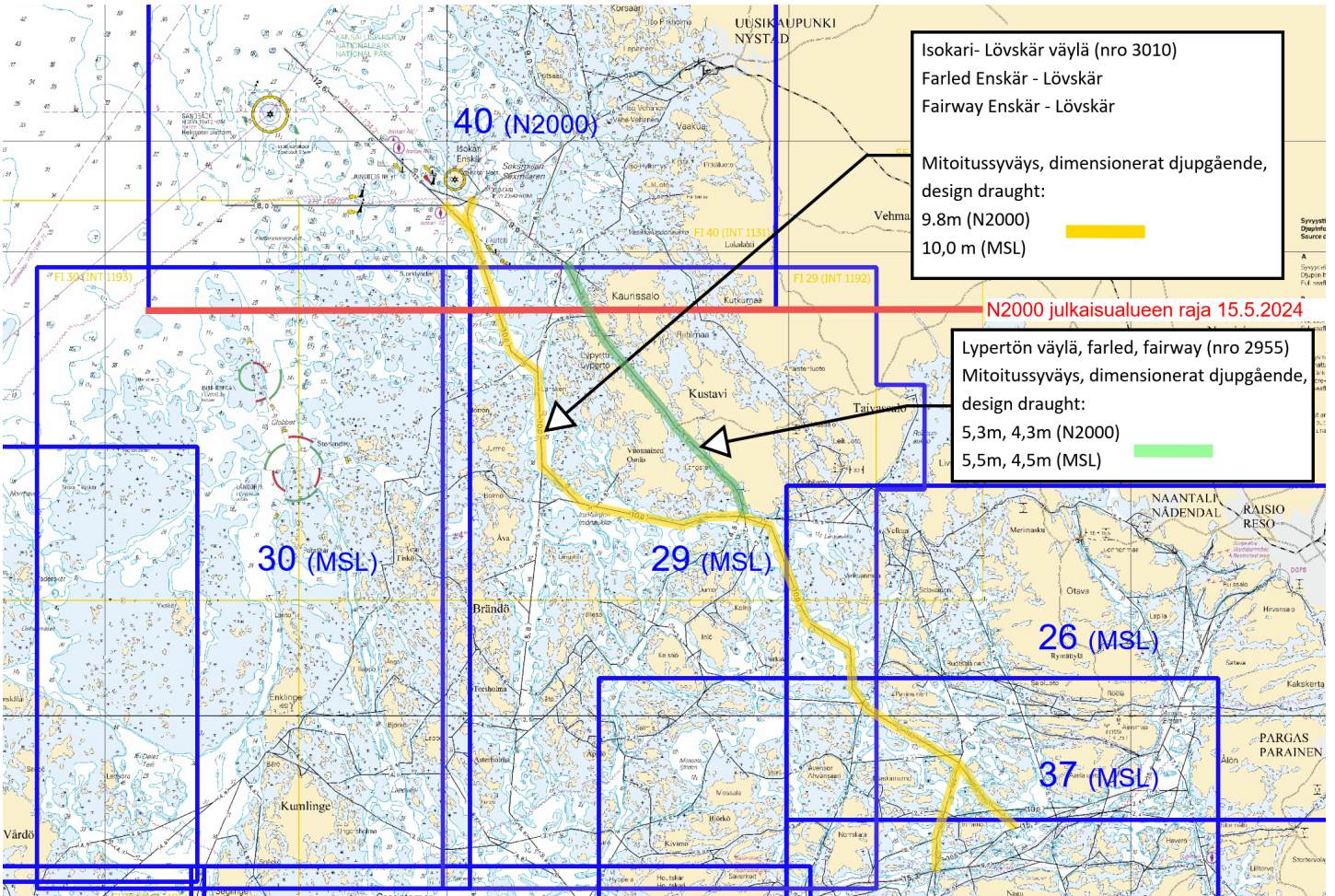


Image for reference, chart extracts not to scale of chart.

4

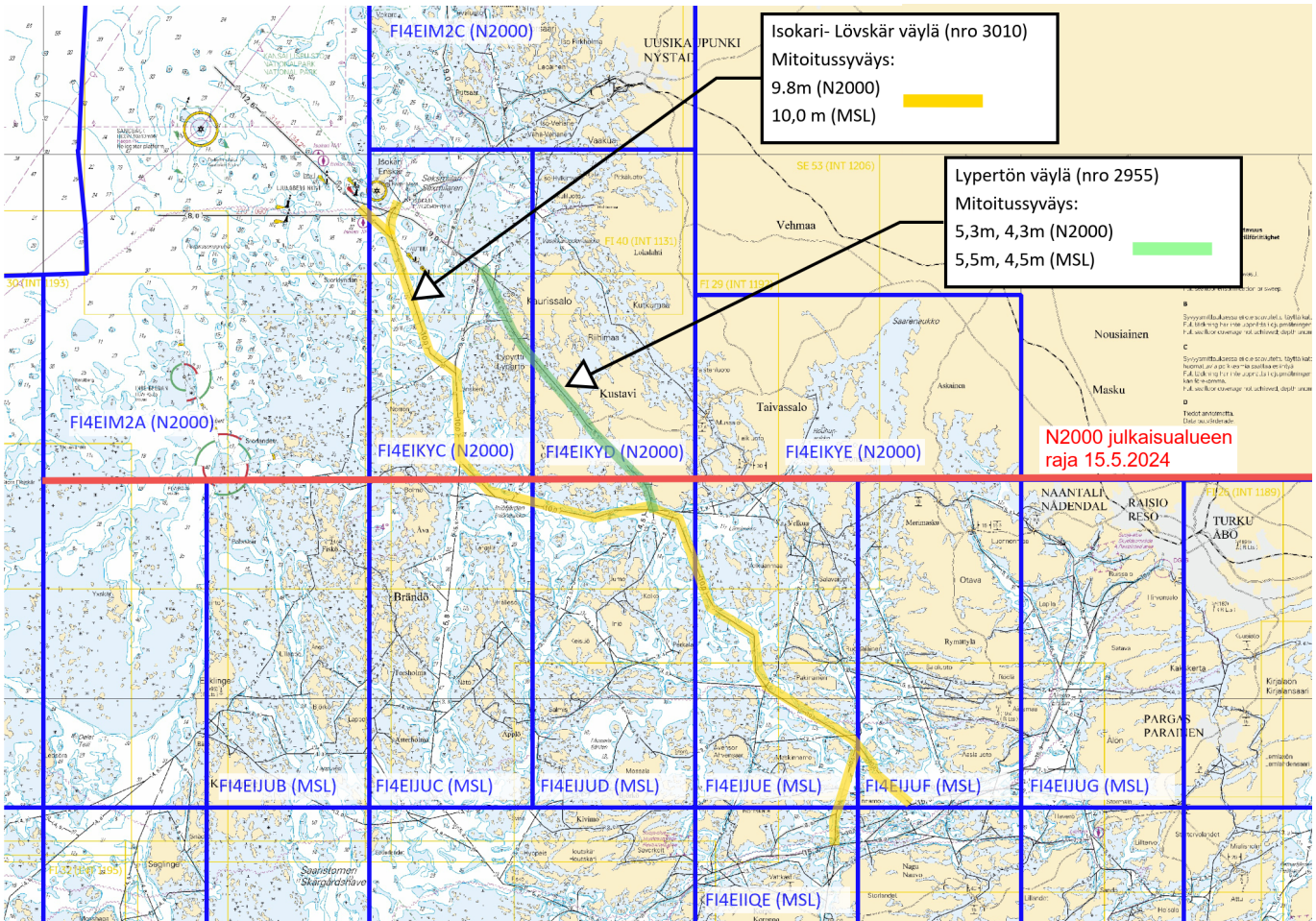


Image for reference, chart extracts not to scale of chart. Page 12

\*109/2024

2024-05-20

## Finland. Sailing Directions for Finnish waters. Channel descriptions of Main approach channels. Main approach channels 2.3.1 - Sea of Bothnia.

**Charts**

**Previous**

References:44/2024 [🔗](#)

---

1

Sailing directions for Finnish water 2.3.1 - Sea of Bothnia

The Finnish Transport and Communications Agency Traficom publishes the nautical charts and nautical publications in Finland. Nautical publications contain information to support the nautical charts. Sailing Directions for Finnish waters consists of a General information part (part 1) and descriptions of the main approach channels (Part 2 – Main approach channels). Part 2 is divided into several volumes. Sailing directions for Finnish waters - Part 1, contains general information, guidelines and links to further information. The channel descriptions include depth- and design-data with general notes on usage of the main approach channels. Sailing directions are published as PDF- documents and provided for free download at: <https://fiho.fi/lnk/sd/en>.

Channel descriptions are published together with the N2000 nautical charts. Volume 2.3.1 - Sea of Bothnia, has been published 16 May 2024.

Temporary changes to fairways are not reflected in the Sailing Directions. Mariners should follow the Notices to Mariners and ensure availability of the newest publications including any needed linked material onboard.

<https://www.traficom.fi/en/services/notices-mariners>

(Traficom, Helsinki/Helsingfors 2024)

---

---

\*112/2024

2024-05-20

## Finland. NOTICE OF CHANNEL USE.

**Charts**

**Previous**

References:106/2024 [🔗](#)

---

1

NOTICE OF CHANNEL USE

The Finnish Transport and Communications Agency Traficom has published the instructions "Notice of channel use", specifying the requirements of channel use. Based on the new instructions, the Sailing directions for Finnish waters has been updated. Fintraffic VTS has also updated the related instructions (Master's Guide).

If the vessel's static draught is greater than the channel's design draught taking into account the current water level, the vessel shall ensure that her net underkeel clearance (net UKC) remains adequate and demonstrate it to the VTS Centre that is responsible for monitoring the fairway. Vessel's operator, agent or master shall give the notice of channel use at least 24 hours before its arrival at the pilot boarding position, or if the vessel is expected to arrive in less than 24 hours, no later than when the vessel has left the port of departure for a Finnish port. A vessel departing a Finnish port shall give the notice of channel use as soon as possible, at latest when the departure report is given. Detailed instruction and further guidance is provided by VTS, and procedures described in the regional Master's Guides, found online at <https://fiho.fi/lnk/vtsguide/en>

Additional data is found also in the Sailing directions for Finnish waters [https://fiho.fi/npub/sd/SD\\_1\\_EN.pdf](https://fiho.fi/npub/sd/SD_1_EN.pdf) and in the Instructions Notice of channel use <https://fiho.fi/lnk/chnote/en>

(Traficom, Helsinki/Helsingfors 2024)

---

---

# Current Preliminary (P) and Temporary (T) notices (20.05.2024)

## Gulf of Finland

T&P	Charts	Gulf of Finland
174(T)/2019 <a href="#">↗</a>	951	SE of Bol'soj Tjuters. Obstructions
296(T)/2020 <a href="#">↗</a>	17, 18, 191, 952, A, B	Helsinki. Sipoo. Areas and borders
20(T)/2021 <a href="#">↗</a>	951, A	TSS OFF ROOSHER ISLAND. Lighthouse Rodser extinguished. Notice repeated. Buoyage
228(T)/2021 <a href="#">↗</a>	951, A	Krestovjy. Lighthouse Krestovjy extinguished. Notice repeated. Buoyage
304(T)/2021 <a href="#">↗</a>	18, 192, A, B	Helsinki. Vuosaari. Notice repeated. Buoyage. Areas and borders
65(T)/2022 <a href="#">↗</a>	A, S	Vyborg. Destroyed leading beacon. Notice repeated. Buoyage
66(T)/2022 <a href="#">↗</a>	A, S	Vyborg. Light extinguished. Notice repeated. Buoyage
86(T)/2022 <a href="#">↗</a>	18, 191, 952, A, B	Helsinki. Kruunuvuori. Restrictions on small craft traffic. Fairways
90(T)/2022 <a href="#">↗</a>	951	Tiskolovo. Lighthouse Kajbolovo. Buoyage
229(T)/2023 <a href="#">↗</a>	18, 191, A, B	Helsinki. Hernesaari. Buoyage
230(T)/2023 <a href="#">↗</a>	18, 191, A, B	Helsinki. Hernesaari. Buoyage. Areas and borders
270(T)/2023 <a href="#">↗</a>	951, 952	N of Purekkarineem. Floating obstruction withdrawn. Obstructions
271(T)/2023 <a href="#">↗</a>	951, 952	N of Purekkarineem. Floating obstruction. Obstructions
35(T)/2024 <a href="#">↗</a>	14, 138, A	Kotka. Lehmäsaari. Destroyed leading light. Buoyage
52(T)/2024 <a href="#">↗</a>	952, A, B	Prangli. Kelnase. Construction works. Areas and borders
80(T)/2024 <a href="#">↗</a>	18, 952, A, B	SW of Helsinginmatala. ODAS spar buoy. Buoyage

## Archipelago Sea

T&P	Charts	Archipelago Sea
189(T)/2023 <a href="#">↗</a>	26, D	Pargas. Kirjala...Restrictions on traffic. Areas and borders
20(T)/2024 <a href="#">↗</a>	26, 190, D	Turku. Aurajoki. Dredging operations. Areas and borders
40(T)/2024 <a href="#">↗</a>	26, 190, D	Naantali. Raumakari. Särkänsalmi. Kirkonsalmi. Notice repeated. Buoyage
74(T)/2024 <a href="#">↗</a>	27, 167, D	Pargas. S of Utö. ODAS buoy. Buoyage
83(T)/2024 <a href="#">↗</a>	27, 167, C, D	Pargas. SE of Utö. ODAS spar buoy. Buoyage
110(T)/2024 <a href="#">↗</a>	23, 25, 26, 37, B, D	Salo. Pargas. Buoyage

## Aland Sea

T&P	Charts	Aland Sea
97(T)/2024 <a href="#">↗</a>	32, 160, C	Mariehamn. Lemströms canal...Restrictions on traffic. Areas and borders

## Bothnian Sea

T&P	Charts	Bothnian Sea
30(T)/2022 <a href="#">↗</a>	41, 127, E	Rauma. Ulko-Petäjäs. Areas and borders
160(T)/2022 <a href="#">↗</a>	41, 127, E	Rauma. Otanlahti. Flytande ö. Obstructions
128(T)/2023 <a href="#">↗</a>	953, 954, 955, C	Saltvik. Brändö. Measuring equipment on seabed. Buoyage
253(T)/2023 <a href="#">↗</a>	955	E of Gävle. Light temporarily unlit. Buoyage
8(T)/2024 <a href="#">↗</a>	42, 125, E	Pori. Tahkoluoto. Notice repeated. Buoyage
76(T)/2024 <a href="#">↗</a>	955	E of Gävle. Light Purrustrund extinguished. Buoyage
95(T)/2024 <a href="#">↗</a>	42, 125, 955, E	Pori. Tahkoluoto. Lighthouse Kaijakari extinguished. Buoyage

## The Quark

T&P	Charts	The Quark
238(T)/2022 <a href="#">↗</a>	48, 115, 921, F, M	Vaasa. Vaskiluoto. Notice repeated. Buoyage
57(T)/2023 <a href="#">↗</a>	957, F	S of Umeå. Light Fjärdgrund extinguished. Buoyage
126(T)/2023 <a href="#">↗</a>	48, 115, 820	Vaasa. Vaskiluoto. Dredging operations. Areas and borders
142(T)/2023 <a href="#">↗</a>	48, 115, 820, 956, 957, 8061, 8065	Vaasa. Vaskiluoto. Notice repeated. Buoyage. Fairways. Fairway areas
254(T)/2023 <a href="#">↗</a>	47, 48, 822, 956, 957	Buoys and spar buoy temporarily withdrawn for the winter. Virtual AIS. Buoyage
255(T)/2023 <a href="#">↗</a>	48, 115, 820	Vaasa. Vaskiluoto. Notice repeated. Buoyage
256(T)/2023 <a href="#">↗</a>	48, 115, 820	Vaasa. Vaskiluoto. Dredging operations. Notice repeated. Areas and borders
266(T)/2023 <a href="#">↗</a>	47, 825, 956, 957, 8065	TSS in Norra Kvarken. Buoys temporarily withdrawn for the winter. Buoyage
62(T)/2024 <a href="#">↗</a>	48, 819, 822, 956, 957, 8061, 8065	Korsholm. W of Replot. Lighthouse Vaasan Majakka extinguished. Buoyage

## Bay of Bothnia

T&P	Charts	Bay of Bothnia
47(T)/2023 <a href="#">↗</a>	57, 119, 845, 846	Port of Oulu. ( N2000 ) (BSCD2000)...Depths. Fairways. Fairway areas
257(T)/2023 <a href="#">↗</a>	60, 958	Buoys temporarily withdrawn for the winter. Virtual AIS. Buoyage
263(T)/2023 <a href="#">↗</a>	55, 119, 838, 839, 958, 8071	Raahe. Light Heikinkari extinguished. Buoyage
9(T)/2024 <a href="#">↗</a>		Skelleftehamn. Light Gasoren. Unreliable sectors. Buoyage

## Vuoksi watercourse

T&P	Charts	Vuoksi watercourse
268(T)/2019 <a href="#">↗</a>	M	Kuopio. Kotkatniemi. Buoyage
214(T)/2020 <a href="#">↗</a>		Leppävirta. Hyvärilä. Buoyage
90(T)/2023 <a href="#">↗</a>	921, M	Kuopio. Light Sotkanselkä operational. Notice repeated. Buoyage

## Kymijoki watercourse

T&P	Charts	Kymijoki watercourse
-	-	

## Kokemäijoki watercourse

T&P	Charts	Kokemäijoki watercourse
-	-	

## Oulujoki watercourse

T&P	Charts	Oulujoki watercourse
-	-	

## Paatsjoki watercourse

T&P	Charts	Paatsjoki watercourse
-	-	

## Saimaa Canal

T&P	Charts	Saimaa Canal
10(T)/2024 <a href="#">↗</a>		Saimaa Canal closed for the winter season.

## Northern Baltic

T&P	Charts	Northern Baltic
11(T)/2024 <a href="#">↗</a>	952, 953, 954	Hiiumaa. Tahkuna. Light Lehtma extinguished. Buoyage

## Announcements

T&P	Charts	Announcements
291(T)/2022 <a href="#">↗</a>		Bay of Bothnia. Off Oulu. V-AIS. Notice repeated.
99(T)/2023 <a href="#">↗</a>		Off Merikarvia. Hydrographic surveying in progress.
137(T)/2023 <a href="#">↗</a>		Helsinki. Korkeasaari...Restrictions on small craft traffic
102(T)/2024 <a href="#">↗</a>		Pargas. Hessund. Bridge construction work.