



# Notices to Mariners

## NtM 18/2024

Notices: 154 - 165 / 30.06.2024



# Table of Contents

Title	Page
Index by Area	2
Index by Chart	3
Archipelago Sea	4
Åland Sea	5
Bay of Bothnia	7
Kokemäkjoki watercourse	13
Current Preliminary (P) and Temporary (T) notices (28.06.2024)	14

# Index by Area

## Archipelago Sea

### Charts

*156/2024	24, D
*157/2024	25, 37, B, D

## Aland Sea

### Charts

*154(T)/2024	31, 935, 953, C
*155(T)/2024	31, 935, C
*158/2024	32, 160, C

## Bay of Bothnia

### Charts

*159/2024	50, 51, 829, 830, 957
*160/2024	52, 833, 834
*161/2024	57, 848
*162/2024	57, 846, 847
*163/2024	57, 846, 958, 8071
*164(T)/2024	57, 119, 846

## Kokemäkjoki watercourse

### Charts

*165/2024	0
-----------	---

# Index by Chart

Charts	Notices
24	*156/2024
25	*157/2024
31	*154(T)/2024, *155(T)/2024
32	*158/2024
37	*157/2024
50	*159/2024
51	*159/2024
52	*160/2024
57	*161/2024, *162/2024, *163/2024, *164(T)/2024
119	*164(T)/2024
160	*158/2024
829	*159/2024
830	*159/2024
833	*160/2024
834	*160/2024
846	*162/2024, *163/2024, *164(T)/2024
847	*162/2024
848	*161/2024
935	*154(T)/2024, *155(T)/2024
953	*154(T)/2024
957	*159/2024
958	*163/2024
8071	*163/2024
B	*157/2024
C	*154(T)/2024, *155(T)/2024, *158/2024
D	*156/2024, *157/2024
O	*165/2024

# Archipelago Sea

\*156/2024

2024-06-28

Finland. Archipelago Sea. Pargas. Långskär. Buoyage

## Charts

24

(INT 1187)

D711, D711.1

## Previous

183/2023 [↗](#)

141/2024 [↗](#)

---

1	24, D711, D711.1	59°51.504'N	21°57.775'E	21744
Delete				

(Traficom, Helsinki/Helsingfors 2024)

---

---

\*157/2024

2024-06-28

Finland. Archipelago Sea. Pargas. Gulskär. Marine farm. Areas and borders

## Charts

25

(INT 1188)

37

(INT 1198)

B649

D703, D709

## Previous

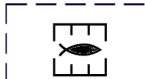
141/2024 [↗](#)

141/2024 [↗](#)

138/2024 [↗](#)

156/2024 [↗](#)

---

1	25, 37, B649, D703, D709	(1) 60°07.39'N	22°06.36'E
Add 	Between the following positions:	(2) 60°07.38'N	22°06.43'E
		(3) 60°07.22'N	22°06.27'E
		(4) 60°07.21'N	22°06.34'E

(Traficom, Helsinki/Helsingfors 2024)

---

---

# Aland Sea

\*154(T)/2024

2024-06-27

Finland. Aland Sea. Lemland. Light Lågskär extinguished. Buoyage

Charts		Previous
31	(INT 1194)	133/2023 <a href="#">↗</a>
935		193/2023 <a href="#">↗</a>
953		140/2024 <a href="#">↗</a>
C755		140/2024 <a href="#">↗</a>

Time: to approx. 30 September 2024

1  
The light of the lighthouse is inoperative during the repair work.

2 31, 935, 953, C755

Amend  59°50.47'N 19°54.74'E 6114, (C4480)  
LÅGSKÄR  
Fl.W.12s  
(exting)

(Traficom, Helsinki/Helsingfors 2024)

\*155(T)/2024

2024-06-27

Finland. Aland Sea. TSS SOUTH ÅLAND SEA. Light Flötjan extinguished.  
Buoyage

Charts		Previous
31	(INT 1194)	154/2024 <a href="#">↗</a>
935		154/2024 <a href="#">↗</a>
C755		154/2024 <a href="#">↗</a>

Time: to approx. 30 September 2024

1  
The light and racon of the lighthouse are inoperative during the repair work.

2 31, 935, C755

Amend  59°48.50'N 19°46.93'E 6345, (C4482)  
FLÖTJAN  
Fl(2)W.20s  
(exting)  
Racon (T) (not  
in use)

(Traficom, Helsinki/Helsingfors 2024)


\*158/2024

2024-06-28

Finland. Aland Sea. Lemland. Gränskär. Landmarks

Charts		Previous
32	(INT 1195)	97/2024 <a href="#">↗</a>
160	(INT 1156)	97/2024 <a href="#">↗</a>
C753, C756		155/2024 <a href="#">↗</a>

---

1		32, 160, C753, C756		
Add		Monument (INT E24)	60°01.275'N	20°02.537'E

(Traficom, Helsinki/Helsingfors 2024)

---

---

# Bay of Bothnia

\*159/2024

2024-06-28


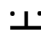
Finland. Bay of Bothnia. Nykarleby. S of Lighthouse Stubben. Depths

Charts		Previous
50	(INT 1141)	73/2023 <a href="#">↗</a>
51	(INT 1142)	177/2023 <a href="#">↗</a>
829		/
830		/
957	(INT 1208)	142/2024 <a href="#">↗</a>

---

1  
Delete  $3_5$  957 63°30.28'N 22°09.57'E

---

2  
Amend  $4_2$    50, 51, 829, 830  
Insert 3 m depth contour 63°30.15'N 22°09.55'E

(Traficom, Helsinki/Helsingfors 2024)

---

---


\*160/2024

2024-06-28

Finland. Bay of Bothnia. Kokkola. Kallskärsreveln. Depths

Charts		Previous
52	(INT 1143)	/
833		28/2024 <a href="#">↗</a>
834		113/2024 <a href="#">↗</a>

---

1  
Add  52, 833, 834  
Insert 3 m depth contour 63°55.699'N 22°50.454'E

(Traficom, Helsinki/Helsingfors 2024)

---

---

\*161/2024

2024-06-28

Finland. Bay of Bothnia. Oulu. Hailuoto. OULU 4. Fairway areas

Charts

57

(INT 1148)

Previous

145/2024 [↗](#)

848

112/2023 [↗](#)

1 57, 848

Amend **11,8m** → **11,7m**

Between the following positions:

(1) 65°07.63'N 24°48.58'E

(2) 65°07.47'N 24°46.32'E

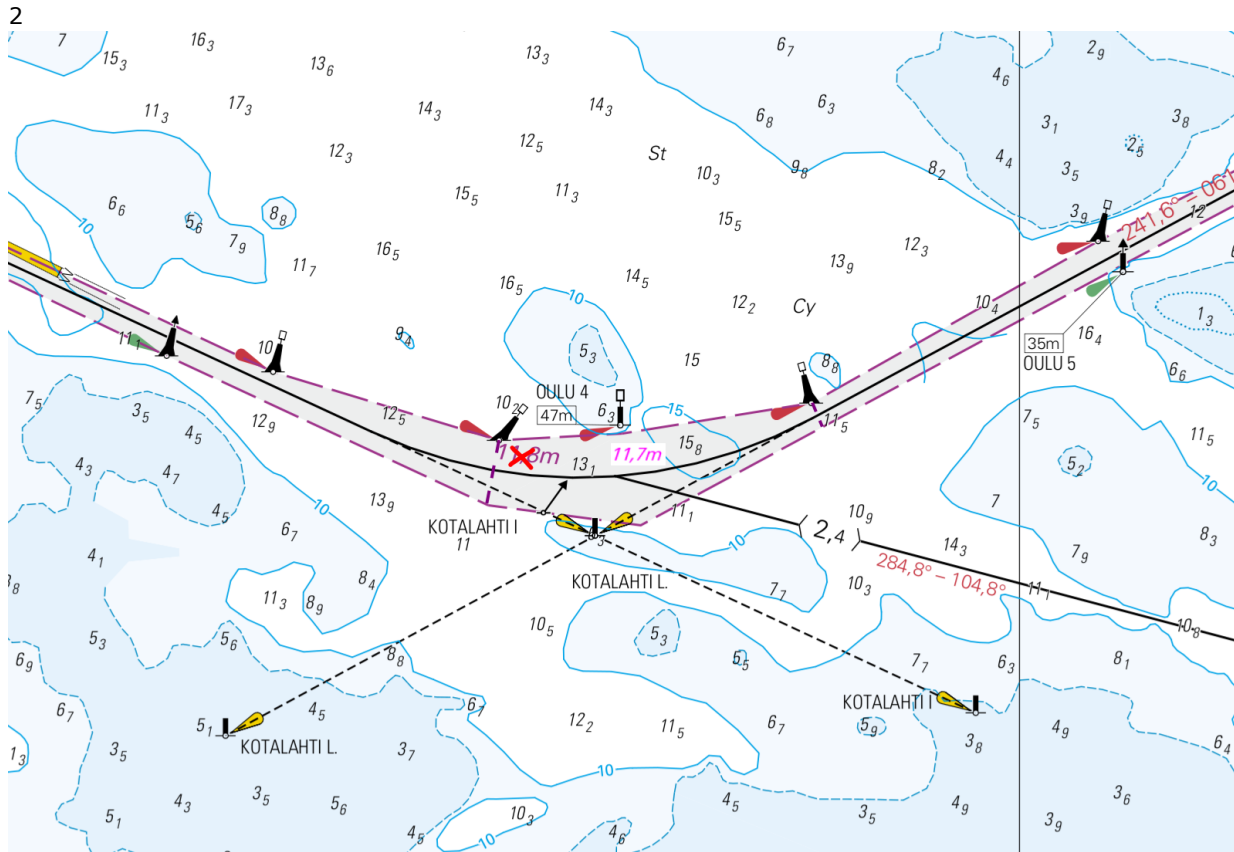


Image for reference, chart extracts not to scale of chart.

(Traficom, Helsinki/Helsingfors 2024)

\*162/2024

2024-06-28

# Finland. Bay of Bothnia. Oulu. Hietakari. Fairway areas. Areas and borders

Charts		Previous
57	(INT 1148)	161/2024 <a href="#">↗</a>
846		145/2024 <a href="#">↗</a>
847		137/2024 <a href="#">↗</a>

References:161/2024 [↗](#)

1	57, 846, 847			
Delete	Between the following positions:	(1)	65°06.782'N	25°05.269'E
		(2)	65°06.288'N	25°07.213'E
2	57, 846, 847			
Add	Between the following positions:	(1)	65°06.782'N	25°05.269'E
		(2)	65°06.710'N	25°06.500'E
3	57, 846, 847			
Amend	11,3m	➔	14,3m	65°06.638'N 25°06.370'E

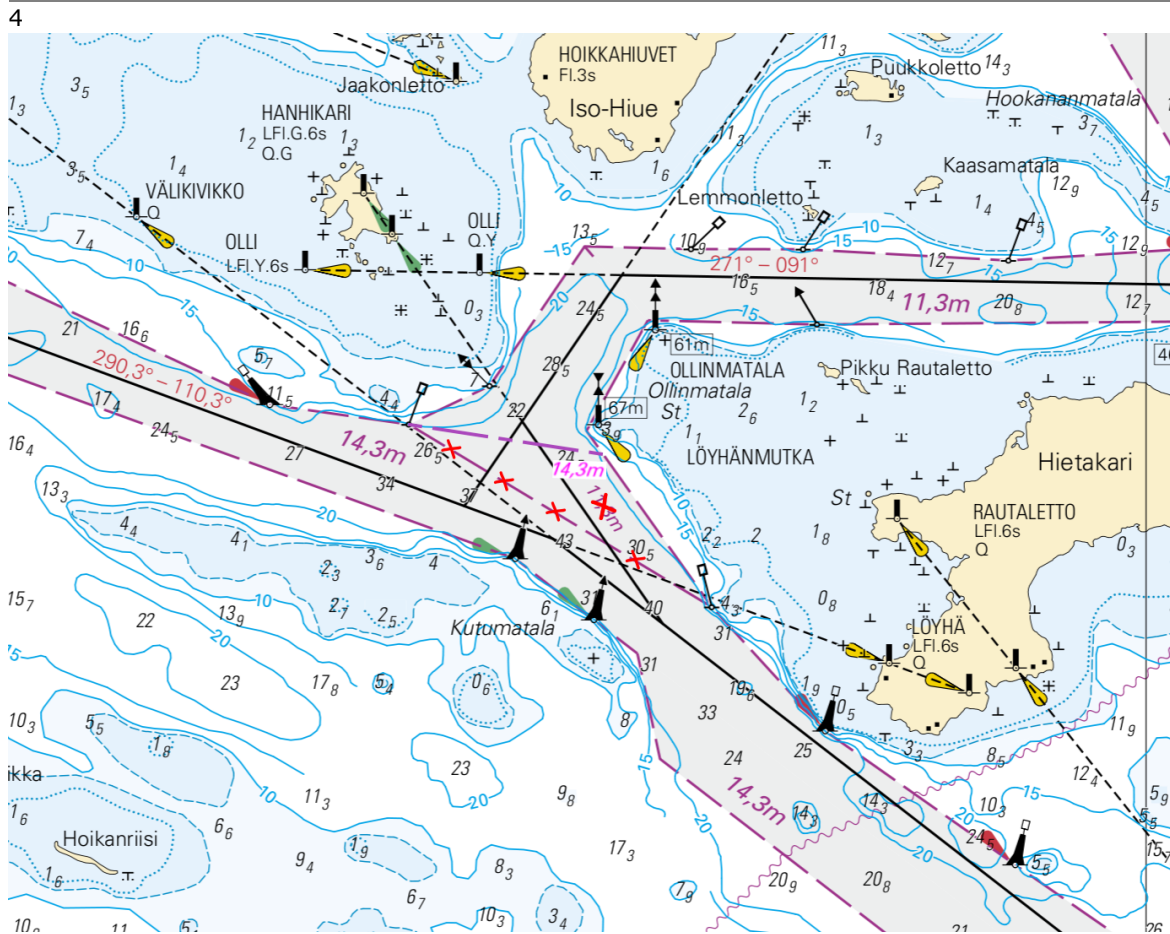


Image for reference, chart extracts not to scale of chart.

(Traficom, Helsinki/Helsingfors 2024)

\*163/2024

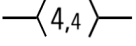
2024-06-28

Finland. Bay of Bothnia. Hailuoto. Buoyage. Fairways

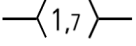
Charts		Previous
57	(INT 1148)	162/2024 <a href="#">↗</a>
846		162/2024 <a href="#">↗</a>
958	(INT 1209)	145/2024 <a href="#">↗</a>
8071/INDEX		145/2024 <a href="#">↗</a>

References: 145(T)/2024 [↗](#)


---

1	57, 846, 958, 8071/INDEX			
Add		Between the following positions:	(1) 65°02.578'N	25°06.000'E
		Delete former centre line	(2) 65°01.900'N	25°05.353'E

---

2	57, 846, 958, 8071/INDEX			
Add		Between the following positions:	(1) 65°02.097'N	25°05.543'E
		Delete former centre line	(2) 65°01.305'N	25°02.609'E

---

3	57, 846			
Move			<b>From</b>	
			65°02.176'N	25°05.274'E
			<b>To</b>	
			65°02.143'N	25°05.540'E
				10375

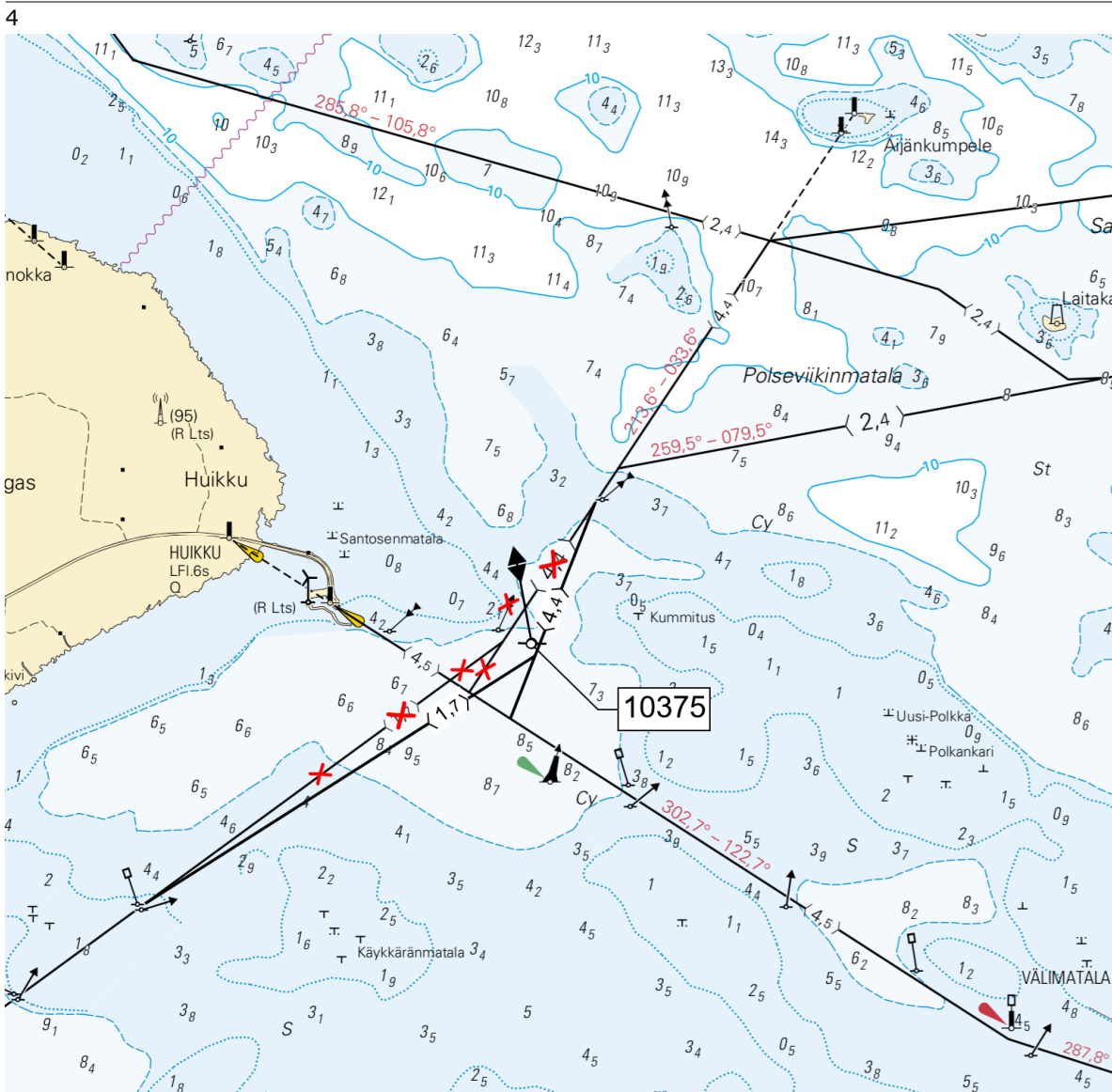


Image for reference, chart extracts not to scale of chart.

(Traficom, Helsinki/Helsingfors 2024)

\*164(T)/2024

2024-06-28

Finland. Bay of Bothnia. Oulu. Pikisaari. Fairways

Charts	Previous
57	(INT 1148) 163/2024 <a href="#">↗</a>
119.B	(INT 11461) 111/2024 <a href="#">↗</a>
846, 846.A	163/2024 <a href="#">↗</a>

Time: to approx. 31 December 2025

1 57, 119.B, 846, 846.A

Amend  $\langle 1,4 \rangle \rightarrow \langle 1,2 \rangle$  Between the following positions:

- (1) 65°00.96'N 25°27.22'E
- (2) 65°01.28'N 25°26.67'E



Image for reference, chart extracts not to scale of chart.

(Traficom, Helsinki/Helsingfors 2024)

# Kokemäkijoki watercourse



\*165/2024

2024-06-28

Finland. Kokemäkijoki watercourse. Lempäälä. Kirkkolahti. Cables and pipelines

Charts  
0524

Previous  
58/2023 [↗](#)

1	O524		(1) 61°18.659'N 23°44.622'E
Add 	Between the following positions:	(2) 61°18.793'N 23°44.686'E	
		(3) 61°18.859'N 23°44.899'E	
2	O524		(1) 61°18.659'N 23°44.622'E
Add 	Between the following positions:	(2) 61°18.862'N 23°44.706'E	
		(3) 61°19.023'N 23°44.660'E	
		(4) 61°19.231'N 23°44.552'E	
		(5) 61°19.319'N 23°44.595'E	
		(6) 61°19.396'N 23°44.720'E	

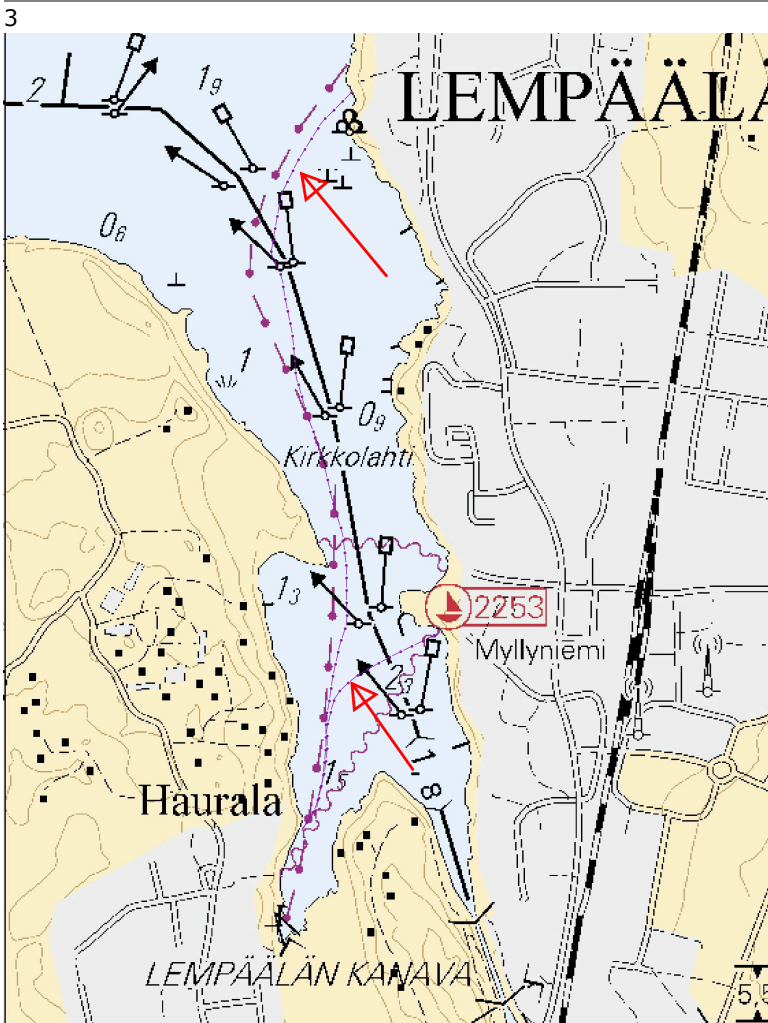


Image for reference, chart extracts not to scale of chart.

(Lempäälän Vesi Oy, 2024)

# Current Preliminary (P) and Temporary (T) notices (28.06.2024)

## Gulf of Finland

T&P	Charts	Gulf of Finland
174(T)/2019 <a href="#">↗</a>	951	SE of Bol'soj Tjuters. Obstructions
296(T)/2020 <a href="#">↗</a>	17, 18, 191, 952, A, B	Helsinki. Sipoo. Areas and borders
20(T)/2021 <a href="#">↗</a>	951, A	TSS OFF ROOSHER ISLAND. Lighthouse Rodser extinguished. Notice repeated. Buoyage
228(T)/2021 <a href="#">↗</a>	951, A	Krestovyy. Lighthouse Krestovyy extinguished. Notice repeated. Buoyage
304(T)/2021 <a href="#">↗</a>	18, 192, A, B	Helsinki. Vuosaari. Notice repeated. Buoyage. Areas and borders
65(T)/2022 <a href="#">↗</a>	A, S	Vyborg. Destroyed leading beacon. Notice repeated. Buoyage
66(T)/2022 <a href="#">↗</a>	A, S	Vyborg. Light extinguished. Notice repeated. Buoyage
86(T)/2022 <a href="#">↗</a>	18, 191, 952, A, B	Helsinki. Kruunuvuori. Restrictions on small craft traffic. Fairways
90(T)/2022 <a href="#">↗</a>	951	Tiskolovo. Lighthouse Kajbolovo. Buoyage
229(T)/2023 <a href="#">↗</a>	18, 191, A, B	Helsinki. Hernesaari. Buoyage
230(T)/2023 <a href="#">↗</a>	18, 191, A, B	Helsinki. Hernesaari. Buoyage. Areas and borders
270(T)/2023 <a href="#">↗</a>	951, 952	N of Purekkarineem. Floating obstruction withdrawn. Obstructions
271(T)/2023 <a href="#">↗</a>	951, 952	N of Purekkarineem. Floating obstruction. Obstructions
35(T)/2024 <a href="#">↗</a>	14, 138, A	Kotka. Lehmäsaari. Destroyed leading light. Buoyage
52(T)/2024 <a href="#">↗</a>	952, A, B	Prangli. Kelnase. Construction works. Areas and borders
80(T)/2024 <a href="#">↗</a>	18, 952, A, B	SW of Helsinginmatala. ODAS spar buoy. Buoyage
115(T)/2024 <a href="#">↗</a>	21, B	Raseborg. Jomalvik. Channel section closed. Areas and borders

## Archipelago Sea

T&P	Charts	Archipelago Sea
189(T)/2023 <a href="#">↗</a>	26, D	Pargas. Kirjala...Restrictions on traffic. Areas and borders
20(T)/2024 <a href="#">↗</a>	26, 190, D	Turku. Aurajoki. Dredging operations. Areas and borders
40(T)/2024 <a href="#">↗</a>	26, 190, D	Naantali. Raumakari. Särkänalmi. Kirkonsalmi. Notice repeated. Buoyage
74(T)/2024 <a href="#">↗</a>	27, 167, D	Pargas. S of Utö. ODAS buoy. Buoyage
130(T)/2024 <a href="#">↗</a>	27, D	Pargas. S of Utö. ODAS buoy. Buoyage
139(T)/2024 <a href="#">↗</a>	25, 26, 37, D	Pargas. Seili. ODAS buoys. Buoyage

## Aland Sea

T&P	Charts	Aland Sea
97(T)/2024 <a href="#">↗</a>	32, 160, C	Mariehamn. Lemströms canal...Restrictions on traffic. Areas and borders
154(T)/2024 <a href="#">↗</a>	31, 935, 953, C	Lemland. Light Lågskär extinguished. Buoyage
155(T)/2024 <a href="#">↗</a>	31, 935, C	TSS SOUTH ÅLAND SEA. Light Flötjan extinguished. Buoyage

## Bothnian Sea

T&P	Charts	Bothnian Sea
30(T)/2022 <a href="#">↗</a>	41, 127, E	Rauma. Ulko-Petäjäs. Areas and borders
160(T)/2022 <a href="#">↗</a>	41, 127, E	Rauma. Otanlahti. Flytande ö. Obstructions
128(T)/2023 <a href="#">↗</a>	953, 954, 955, C	Saltvik. Brändö. Measuring equipment on seabed. Buoyage
253(T)/2023 <a href="#">↗</a>	955	E of Gävle. Light temporarily unlit. Buoyage
8(T)/2024 <a href="#">↗</a>	42, 125, E	Pori. Tahkoluoto. Notice repeated. Buoyage
76(T)/2024 <a href="#">↗</a>	955	E of Gävle. Light Purrutgrund extinguished. Buoyage
95(T)/2024 <a href="#">↗</a>	42, 125, 955, E	Pori. Tahkoluoto. Lighthouse Kaijakari extinguished. Buoyage
120(T)/2024 <a href="#">↗</a>	43, 113, 955, E	Merikarvia. Dredging operations. Areas and borders
121(T)/2024 <a href="#">↗</a>	45, 46, 815, 816	Korsnäs. Measuring equipment on seabed. Obstructions

## The Quark

T&P	Charts	The Quark
238(T)/2022 <a href="#">↗</a>	48, 115, 921, F, M	Vaasa. Vaskiluoto. Notice repeated. Buoyage
57(T)/2023 <a href="#">↗</a>	957, F	S of Umeå. Light Fjärdgrund extinguished. Buoyage
126(T)/2023 <a href="#">↗</a>	48, 115, 820	Vaasa. Vaskiluoto. Dredging operations. Areas and borders
142(T)/2023 <a href="#">↗</a>	48, 115, 820, 956, 957, 8061, 8065	Vaasa. Vaskiluoto. Notice repeated. Buoyage. Fairways. Fairway areas
255(T)/2023 <a href="#">↗</a>	48, 115, 820	Vaasa. Vaskiluoto. Notice repeated. Buoyage
256(T)/2023 <a href="#">↗</a>	48, 115, 820	Vaasa. Vaskiluoto. Dredging operations. Notice repeated. Areas and borders
266(T)/2023 <a href="#">↗</a>	47, 825, 956, 957, 8065	TSS in Norra Kvarken. Buoys temporarily withdrawn for the winter. Buoyage
62(T)/2024 <a href="#">↗</a>	48, 819, 822, 956, 957, 8061, 8065	Korsholm. W of Replot. Lighthouse Vaasan Majakka extinguished. Buoyage

# Bay of Bothnia

T&P	Charts	Bay of Bothnia
47(T)/2023 <a href="#">↗</a>	57, 119, 845, 846	Port of Oulu. ( N2000 ) (BSCD2000)...Depths. Fairways. Fairway areas
263(T)/2023 <a href="#">↗</a>	55, 119, 838, 839, 958, 8071	Raahe. Light Heikinkari extinguished. Buoyage
133(T)/2024 <a href="#">↗</a>	59, 854	Tornio. Pensaskari. Buoyage
137(T)/2024 <a href="#">↗</a>	57, 847	Off Oulu. Länsiletto. Buoyage
144(T)/2024 <a href="#">↗</a>	57, 846	Oulu. Pajuniemi. Buoyage
145(T)/2024 <a href="#">↗</a>	57, 846, 958, 8071	Hailuoto. Bridge construction work. Areas and borders
164(T)/2024 <a href="#">↗</a>	57, 119, 846	Oulu. Pikisaari. Fairways

# Vuoksi watercourse

T&P	Charts	Vuoksi watercourse
268(T)/2019 <a href="#">↗</a>	M	Kuopio. Kotkatniemi. Buoyage
214(T)/2020 <a href="#">↗</a>		Leppävirta. Hyvärilä. Buoyage
90(T)/2023 <a href="#">↗</a>	921, M	Kuopio. Light Sotkanselkä operational. Notice repeated. Buoyage

# Kymijoki watercourse

T&P	Charts	Kymijoki watercourse
-	-	

# Kokemäkjoki watercourse

T&P	Charts	Kokemäkjoki watercourse
-	-	

## Oulujoki watercourse

T&P	Charts	Oulujoki watercourse
-	-	

## Paatsjoki watercourse

T&P	Charts	Paatsjoki watercourse
-	-	

## Saimaa Canal

T&P	Charts	Saimaa Canal
10(T)/2024 <a href="#">↗</a>		Saimaa Canal closed for the winter season.

## Northern Baltic

T&P	Charts	Northern Baltic
11(T)/2024 <a href="#">↗</a>	952, 953, 954	Hiiumaa. Tahkuna. Light Lehtma extinguished. Buoyage

## Announcements

T&P	Charts	Announcements
291(T)/2022 <a href="#">↗</a>		Bay of Bothnia. Off Oulu. V-AIS. Notice repeated.
99(T)/2023 <a href="#">↗</a>		Off Merikarvia. Hydrographic surveying in progress.
137(T)/2023 <a href="#">↗</a>		Helsinki. Korkeasaari...Restrictions on small craft traffic
102(T)/2024 <a href="#">↗</a>		Pargas. Hessund. Bridge construction work.