



# Notices to Mariners

## NtM 21/2024

Notices: 183 - 186 / 31.07.2024



# Table of Contents

Title	Page
Index by Area	2
Index by Chart	3
Archipelago Sea	4
Bothnian Sea	6
Bay of Bothnia	7
Current Preliminary (P) and Temporary (T) notices (31.07.2024)	8

# Index by Area

## Archipelago Sea

### Charts

\*183/2024

24, D

\*184/2024

26, 37, D

## Bothnian Sea

### Charts

\*185/2024

41, 805, 806

## Bay of Bothnia

### Charts

\*186/2024

57, 846

# Index by Chart

<b>Charts</b>	<b>Notices</b>
24	*183/2024
26	*184/2024
37	*184/2024
41	*185/2024
57	*186/2024
805	*185/2024
806	*185/2024
846	*186/2024
D	*183/2024, *184/2024




\*184/2024

2024-07-30

Finland. Archipelago Sea. Naantali. Röölä. Cables and pipelines

Charts		Previous
26	(INT 1189)	179/2024 <a href="#">↗</a>
37	(INT 1198)	168/2024 <a href="#">↗</a>
D707, D707.1		183/2024 <a href="#">↗</a>

1	26, 37, D707, D707.1	(1)	60°20.722'N	21°57.518'E
Add 	Between the following positions:	(2)	60°20.644'N	21°57.633'E
		(3)	60°20.590'N	21°57.855'E
		(4)	60°20.561'N	21°58.339'E
		(5)	60°20.464'N	21°58.540'E
		(6)	60°20.440'N	21°58.699'E
		(7)	60°20.408'N	21°58.885'E
		(8)	60°20.255'N	21°59.202'E
		(9)	60°20.207'N	21°59.187'E
		(10)	60°20.181'N	21°59.097'E

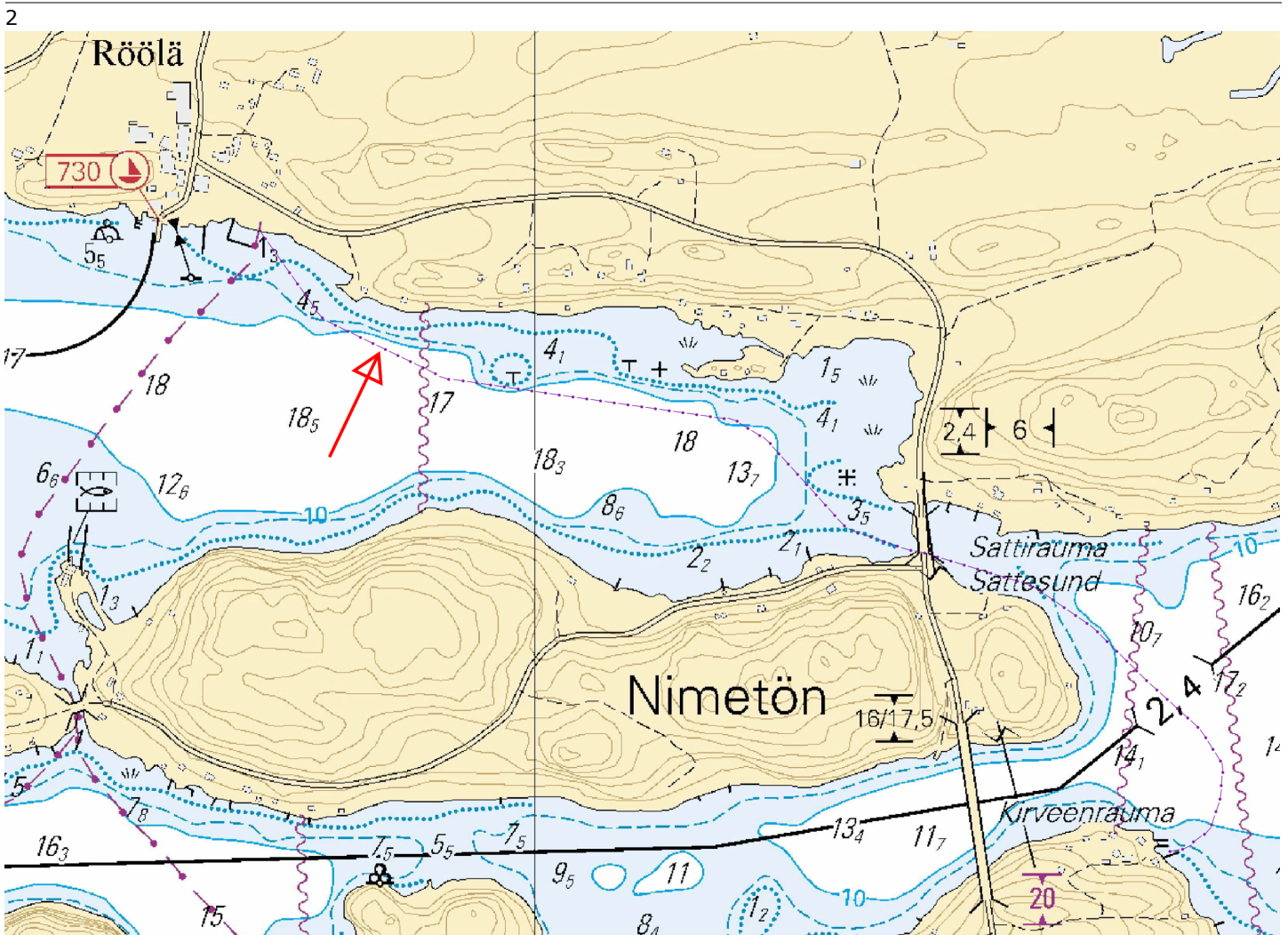


Image for reference, chart extracts not to scale of chart.

(Rymättylän Herrankukkaro Oy, 2024)

# Bothnian Sea


\*185/2024

2024-07-31


Finland. Bothnian Sea. Eurajoki. Olkiluoto. Cables and pipelines

Charts		Previous
41	(INT 1132)	/
805		/
806		/


---

1	41, 805, 806			
Add		Between the following positions:	(1)	61°13.15'N 21°31.66'E
			(2)	61°13.18'N 21°31.56'E

---

2	41, 805, 806			
Add		Between the following positions:	(1)	61°13.21'N 21°31.46'E
			(2)	61°13.24'N 21°31.36'E

---

3	41, 805, 806			
Add		Between the following positions:	(1)	61°13.57'N 21°30.25'E
			(2)	61°13.58'N 21°30.23'E

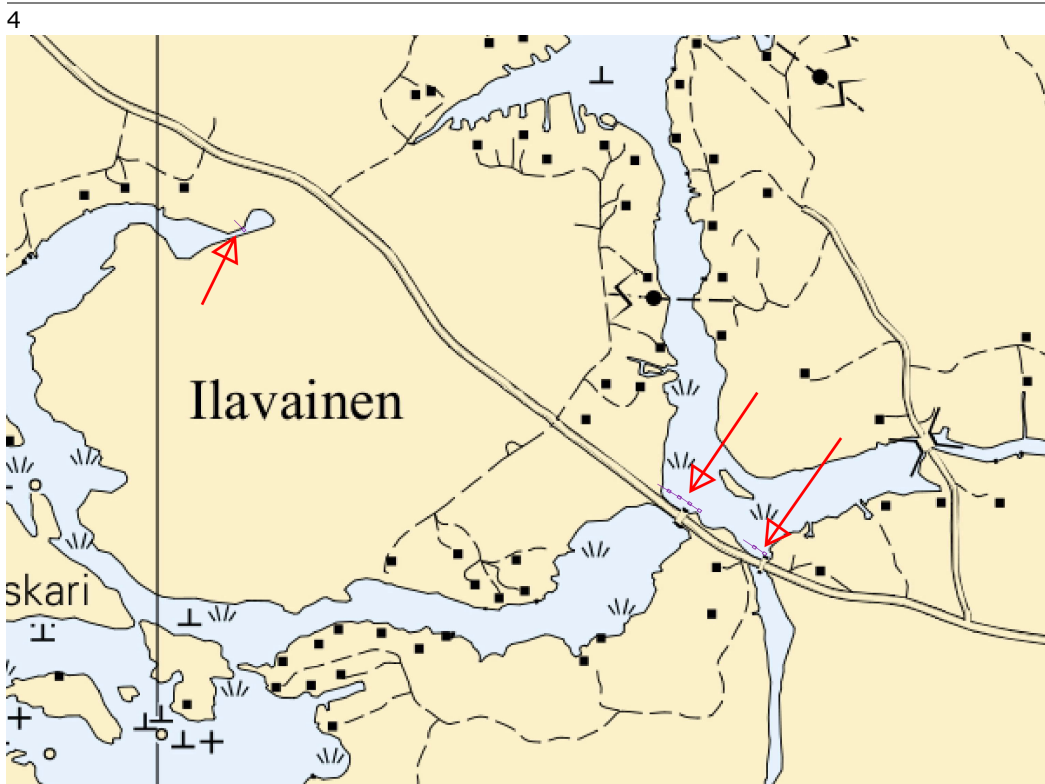


Image for reference, chart extracts not to scale of chart.

(Teollisuuden Voima Oyj, 2024)

# Bay of Bothnia

\*186/2024

2024-07-31

Finland. Bay of Bothnia. Oulu. Kotakari. Buoyage

## Charts

57

(INT 1148)

846

## Previous

180/2024 [↗](#)

180/2024 [↗](#)

1

57, 846

Amend



65°04.873'N

25°10.726'E

10366

(Traficom, Helsinki/Helsingfors 2024)

---

---

# Current Preliminary (P) and Temporary (T) notices (31.07.2024)

## Gulf of Finland

<b>T&amp;P</b>	<b>Charts</b>	<b>Gulf of Finland</b>
174(T)/2019 <a href="#">🔗</a>	951	SE of Bol'soj Tjuters. Obstructions
296(T)/2020 <a href="#">🔗</a>	17, 18, 191, 952, A, B	Helsinki. Sipoo. Areas and borders
20(T)/2021 <a href="#">🔗</a>	951, A	TSS OFF ROOSHER ISLAND. Lighthouse Rodser extinguished. Notice repeated. Buoyage
228(T)/2021 <a href="#">🔗</a>	951, A	Krestovj. Lighthouse Krestovj extinguished. Notice repeated. Buoyage
304(T)/2021 <a href="#">🔗</a>	18, 192, A, B	Helsinki. Vuosaari. Notice repeated. Buoyage. Areas and borders
65(T)/2022 <a href="#">🔗</a>	A, S	Vyborg. Destroyed leading beacon. Notice repeated. Buoyage
66(T)/2022 <a href="#">🔗</a>	A, S	Vyborg. Light extinguished. Notice repeated. Buoyage
86(T)/2022 <a href="#">🔗</a>	18, 191, 952, A, B	Helsinki. Kruunuvuori. Restrictions on small craft traffic. Fairways
90(T)/2022 <a href="#">🔗</a>	951	Tiskolovo. Lighthouse Kajbolovo. Buoyage
229(T)/2023 <a href="#">🔗</a>	18, 191, A, B	Helsinki. Hernesaari. Buoyage
230(T)/2023 <a href="#">🔗</a>	18, 191, A, B	Helsinki. Hernesaari. Buoyage. Areas and borders
270(T)/2023 <a href="#">🔗</a>	951, 952	N of Purekkarineem. Floating obstruction withdrawn. Obstructions
35(T)/2024 <a href="#">🔗</a>	14, 138, A	Kotka. Lehmäsaari. Destroyed leading light. Buoyage
52(T)/2024 <a href="#">🔗</a>	952, A, B	Prangli. Kelnase. Construction works. Areas and borders
80(T)/2024 <a href="#">🔗</a>	18, 952, A, B	SW of Helsinginmatala. ODAS spar buoy. Buoyage
178(T)/2024 <a href="#">🔗</a>	20, B	Ingå. Deep-water harbour. Seabed surveys. Areas and borders

## Archipelago Sea

<b>T&amp;P</b>	<b>Charts</b>	<b>Archipelago Sea</b>
189(T)/2023 <a href="#">🔗</a>	26, D	Pargas. Kirjala...Restrictions on traffic. Areas and borders
40(T)/2024 <a href="#">🔗</a>	26, 190, D	Naantali. Raumakari. Särkäsalmi. Kirkonsalmi. Notice repeated. Buoyage
74(T)/2024 <a href="#">🔗</a>	27, 167, D	Pargas. S of Utö. ODAS buoy. Buoyage
130(T)/2024 <a href="#">🔗</a>	27, D	Pargas. S of Utö. ODAS buoy. Buoyage
139(T)/2024 <a href="#">🔗</a>	25, 26, 37, D	Pargas. Seili. ODAS buoys. Buoyage
168(T)/2024 <a href="#">🔗</a>	25, 26, 37, D	Pargas. Seili. ODAS buoy. Buoyage

## Aland Sea

T&P	Charts	Aland Sea
97(T)/2024 <a href="#">↗</a>	32, 160, C	Mariehamn. Lemströms canal...Restrictions on traffic. Areas and borders
154(T)/2024 <a href="#">↗</a>	31, 935, 953, C	Lemland. Light Lågskär extinguished. Buoyage
155(T)/2024 <a href="#">↗</a>	31, 935, C	TSS SOUTH ÅLAND SEA. Light Flötjan extinguished. Buoyage

## Bothnian Sea

T&P	Charts	Bothnian Sea
30(T)/2022 <a href="#">↗</a>	41, 127, E	Rauma. Ulko-Petäjäs. Areas and borders
160(T)/2022 <a href="#">↗</a>	41, 127, E	Rauma. Otanlahti. Flytande ö. Obstructions
128(T)/2023 <a href="#">↗</a>	953, 954, 955, C	Saltvik. Brändö. Measuring equipment on seabed. Buoyage
253(T)/2023 <a href="#">↗</a>	955	E of Gävle. Light temporarily unlit. Buoyage
8(T)/2024 <a href="#">↗</a>	42, 125, E	Pori. Tahkoluoto. Notice repeated. Buoyage
76(T)/2024 <a href="#">↗</a>	955	E of Gävle. Light Purrutgrund extinguished. Buoyage
95(T)/2024 <a href="#">↗</a>	42, 125, 955, E	Pori. Tahkoluoto. Lighthouse Kaijakari extinguished. Buoyage
120(T)/2024 <a href="#">↗</a>	43, 113, 955, E	Merikarvia. Dredging operations. Areas and borders
121(T)/2024 <a href="#">↗</a>	45, 46, 815, 816	Korsnäs. Measuring equipment on seabed. Obstructions

## The Quark

T&P	Charts	The Quark
238(T)/2022 <a href="#">↗</a>	48, 115, 921, F, M	Vaasa. Vaskiluoto. Notice repeated. Buoyage
126(T)/2023 <a href="#">↗</a>	48, 115, 820	Vaasa. Vaskiluoto. Dredging operations. Areas and borders
142(T)/2023 <a href="#">↗</a>	48, 115, 820, 956, 957, 8061, 8065	Vaasa. Vaskiluoto. Notice repeated. Buoyage. Fairways. Fairway areas
255(T)/2023 <a href="#">↗</a>	48, 115, 820	Vaasa. Vaskiluoto. Notice repeated. Buoyage
256(T)/2023 <a href="#">↗</a>	48, 115, 820	Vaasa. Vaskiluoto. Dredging operations. Notice repeated. Areas and borders
266(T)/2023 <a href="#">↗</a>	47, 825, 956, 957, 8065	TSS in Norra Kvarken. Buoys temporarily withdrawn for the winter. Buoyage
62(T)/2024 <a href="#">↗</a>	48, 819, 822, 956, 957, 8061, 8065	Korsholm. W of Replot. Lighthouse Vaasan Majakka extinguished. Buoyage

# Bay of Bothnia

T&P	Charts	Bay of Bothnia
47(T)/2023 <a href="#">↗</a>	57, 119, 845, 846	Port of Oulu. ( N2000 ) (BSCD2000)...Depths. Fairways. Fairway areas
263(T)/2023 <a href="#">↗</a>	55, 119, 838, 839, 958, 8071	Raahe. Light Heikinkari extinguished. Buoyage
133(T)/2024 <a href="#">↗</a>	59, 854	Tornio. Pensaskari. Buoyage
137(T)/2024 <a href="#">↗</a>	57, 847	Off Oulu. Länsiletto. Buoyage
144(T)/2024 <a href="#">↗</a>	57, 846	Oulu. Pajuniemi. Buoyage
145(T)/2024 <a href="#">↗</a>	57, 846, 958, 8071	Hailuoto. Bridge construction work. Areas and borders
164(T)/2024 <a href="#">↗</a>	57, 119, 846	Oulu. Pikisaari. Fairways
174(T)/2024 <a href="#">↗</a>	958	Off Luleå. Sandgrönnsfjärden. Fairway partially closed. Areas and borders
175(T)/2024 <a href="#">↗</a>	60	Kemi. NE of Lighthouse Kemi 1. Construction works. Areas and borders

# Vuoksi watercourse

T&P	Charts	Vuoksi watercourse
268(T)/2019 <a href="#">↗</a>	M	Kuopio. Kotkatniemi. Buoyage
214(T)/2020 <a href="#">↗</a>		Leppävirta. Hyvärilä. Buoyage
90(T)/2023 <a href="#">↗</a>	921, M	Kuopio. Light Sotkanselkä operational. Notice repeated. Buoyage

# Kymijoki watercourse

T&P	Charts	Kymijoki watercourse
-	-	

# Kokemäkjoki watercourse

T&P	Charts	Kokemäkjoki watercourse
-	-	

## Oulujoki watercourse

T&P	Charts	Oulujoki watercourse
-	-	

## Paatsjoki watercourse

T&P	Charts	Paatsjoki watercourse
-	-	

## Saimaa Canal

T&P	Charts	Saimaa Canal
10(T)/2024 <a href="#">↗</a>		Saimaa Canal closed for the winter season.

## Northern Baltic

T&P	Charts	Northern Baltic
11(T)/2024 <a href="#">↗</a>	952, 953, 954	Hiumaa. Tahkuna. Light Lehtma extinguished. Buoyage

## Announcements

T&P	Charts	Announcements
291(T)/2022 <a href="#">↗</a>		Bay of Bothnia. Off Oulu. V-AIS. Notice repeated.
137(T)/2023 <a href="#">↗</a>		Helsinki. Korkeasaari...Restrictions on small craft traffic
102(T)/2024 <a href="#">↗</a>		Pargas. Hessund. Bridge construction work.
169(T)/2024 <a href="#">↗</a>		Turku. The Tall Ships Races 2024. Restrictions on traffic.
173(T)/2024 <a href="#">↗</a>		Kemi. Simo. Ii. Hydrographic surveying in progress.