



# Notices to Mariners

## NtM 24/2024

Notices: 197 - 200 / 31.08.2024



# Table of Contents

Title	Page
Index by Area	2
Index by Chart	3
Gulf of Finland	4
Bay of Bothnia	6
Current Preliminary (P) and Temporary (T) notices (30.08.2024)	11

# Index by Area

## **Gulf of Finland**

## **Charts**

\*198/2024

20, B

\*199/2024

16, A

## **Bay of Bothnia**

## **Charts**

\*197(T)/2024

57, 119, 845, 846

\*200/2024

57, 119, 845, 846

# Index by Chart

<b>Charts</b>	<b>Notices</b>
16	*199/2024
20	*198/2024
57	*197(T)/2024, *200/2024
119	*197(T)/2024, *200/2024
845	*197(T)/2024, *200/2024
846	*197(T)/2024, *200/2024
A	*199/2024
B	*198/2024

# Gulf of Finland


\*198/2024

2024-08-30

Finland. Gulf of Finland. Ingå. Deep-water harbour. Operations completed.  
Areas and borders

Charts		Previous
20, 20.A	(INT 1252)	178/2024 <a href="#">↗</a>
B632		194/2024 <a href="#">↗</a>

Cancelled: 178(T)/2024 [↗](#)

1	20, 20.A, B632	(1) 60°00.70'N 23°55.24'E
Delete 	Between the following positions:	(2) 60°00.72'N 23°55.90'E
		(3) 60°00.63'N 23°56.58'E

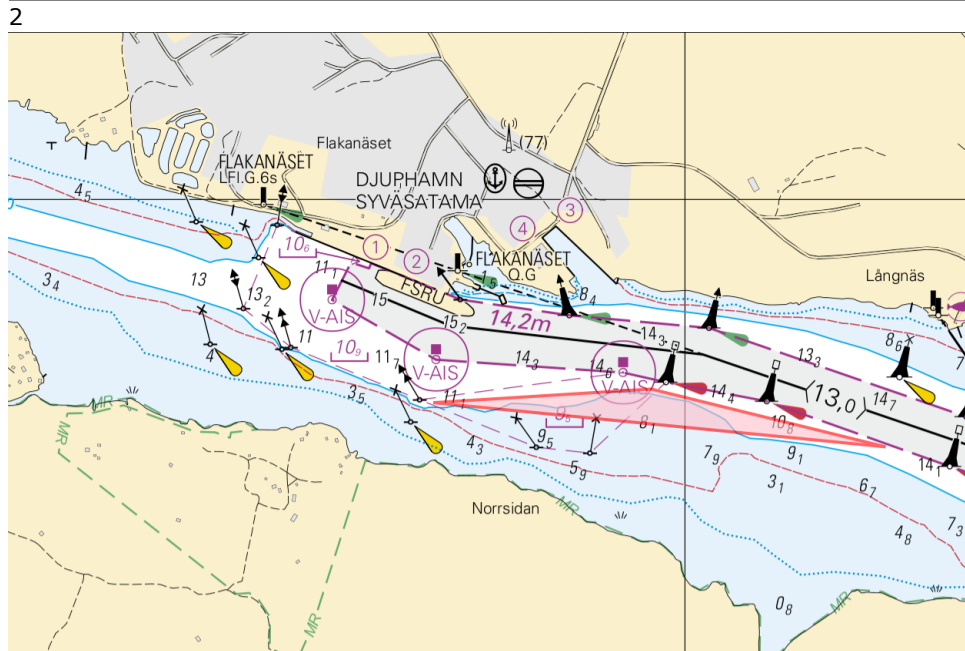


Image for reference, chart extracts not to scale of chart.

(Civil Tech Oy Ab, 2024)

\*199/2024

2024-08-30

Finland. Gulf of Finland. Porvoo. Vähä-Pellinki. Oxnäs. Cables and pipelines

**Charts**

16  
A620, A620.1

(INT 1248)

**Previous**

26/2024 [↗](#)  
195/2024 [↗](#)

1 16, A620, A620.1

Add 

Between the following positions:

- (1) 60°13.216'N 25°56.484'E
- (2) 60°13.230'N 25°56.402'E
- (3) 60°13.281'N 25°56.404'E
- (4) 60°13.287'N 25°56.537'E
- (5) 60°13.246'N 25°56.768'E
- (6) 60°13.197'N 25°56.828'E
- (7) 60°13.178'N 25°56.822'E

2

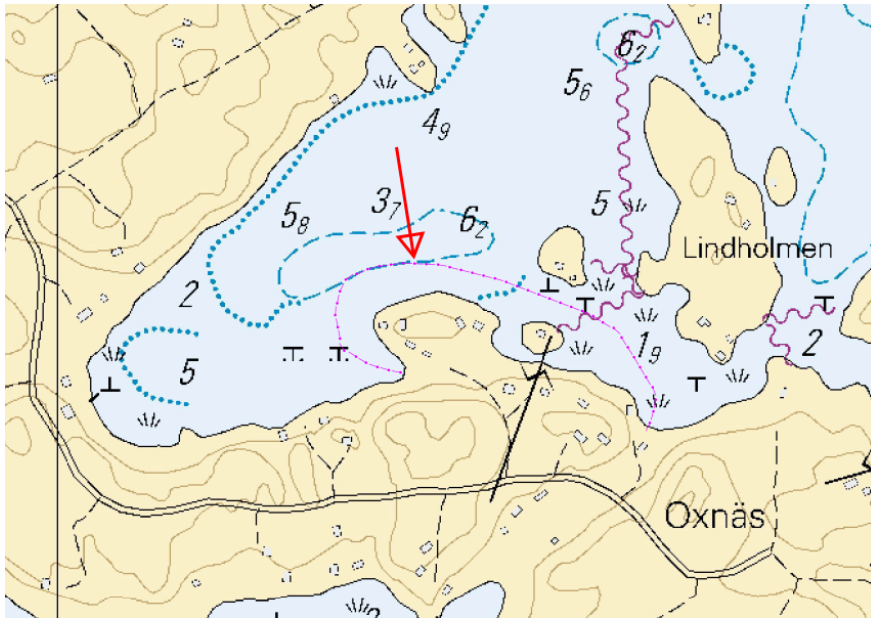


Image for reference, chart extracts not to scale of chart.

(Traficom, Helsinki/Helsingfors 2024)

# Bay of Bothnia

\*197(T)/2024

2024-08-27

Finland. Bay of Bothnia. Oulu. Port of Oulu. Dredging operations. Areas and borders

Charts		Previous
57	(INT 1148)	186/2024 <a href="#">↗</a>
119.B	(INT 11461)	164/2024 <a href="#">↗</a>
845		245/2023 <a href="#">↗</a>
846, 846.A		186/2024 <a href="#">↗</a>

Time: to approx. 30 November 2024

1

Dredging operations underway in Oulu Harbour. Dredgers are listening to VHF channel 67 and working channel is VHF 8.

Vessels navigating in the area are advised to reduce their speed and avoid creating wash in the vicinity of the work vessels.

More information: Phone. 358 50 3796 271.

2

57, 119.B, 845, 846, 846.A

Add

Dredging operations between:

(1)	65°00.11'N	25°24.18'E
(2)	65°00.13'N	25°24.82'E

3

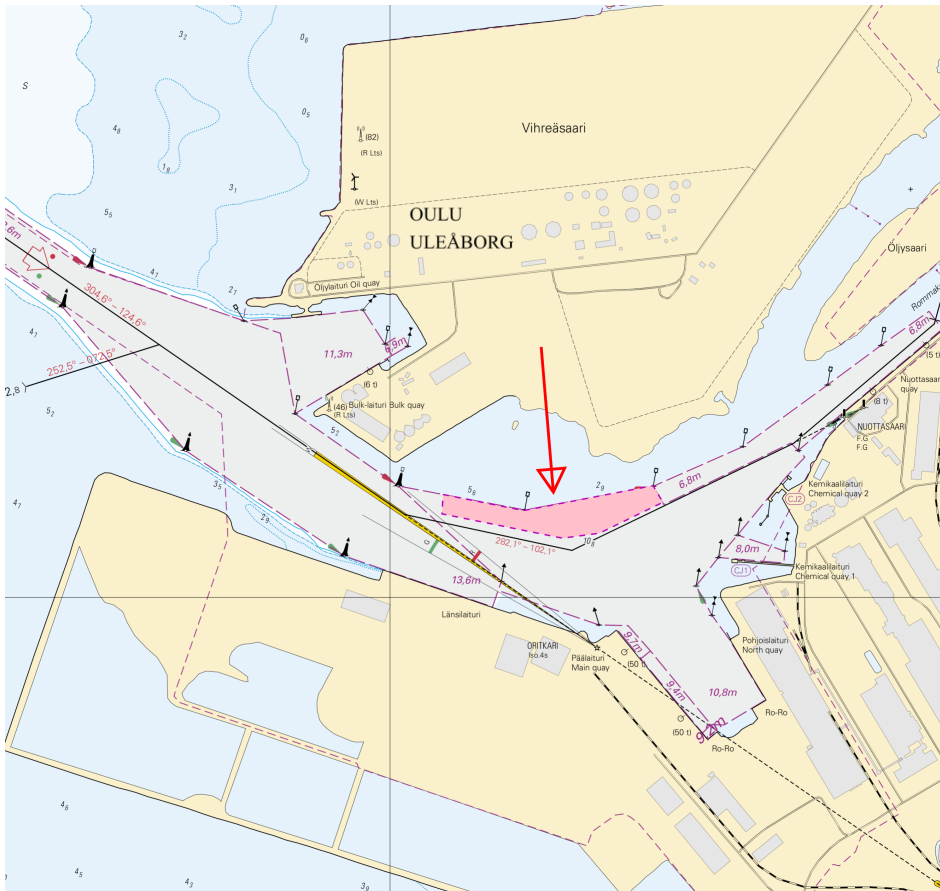


Image for reference, chart extracts not to scale of chart.

(Oulun Satama Oy – Port of Oulu, 2024)

\*200/2024

2024-08-30

Finland. Bay of Bothnia. Port of Oulu. ( N2000 ) (BSCD2000). Notice repeated. Depths. Fairways. Fairway areas

Charts		Previous
57	(INT 1148)	197/2024 <a href="#">↗</a>
119.B	(INT 11461)	197/2024 <a href="#">↗</a>
845		197/2024 <a href="#">↗</a>
846, 846.A		197/2024 <a href="#">↗</a>

References: [272/2023 ↗](#), [197\(T\)/2024 ↗](#)

Cancelled: [47\(T\)/2023 ↗](#)

1

In notice NtM 7/47(T)/2023 items 4 - 17 repeated.

2 57, 119.B, 845, 846, 846.A

Add  9,6m

Between the following positions:

Delete former edge line

(1)	65°00.021'N	25°24.341'E
(2)	64°59.977'N	25°24.661'E
(3)	64°59.964'N	25°24.686'E
(4)	64°59.963'N	25°24.730'E
(5)	64°59.836'N	25°24.982'E
(6)	64°59.852'N	25°25.029'E
(7)	64°59.850'N	25°25.083'E
(8)	64°59.867'N	25°25.151'E
(9)	64°59.977'N	25°24.987'E
(10)	65°00.015'N	25°24.938'E
(11)	65°00.120'N	25°24.839'E
(12)	65°00.144'N	25°24.807'E
(13)	65°00.113'N	25°24.413'E
(14)	65°00.144'N	25°24.025'E

3 57, 119.B, 845, 846, 846.A

Amend 10,8m  9,6m

65°00.09'N 25°24.47'E

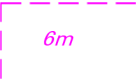


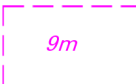




4 57, 119.B, 845, 846, 846.A

Add  9,3m

Between the following positions:

Delete former edge line

(1)	65°00.015'N	25°24.938'E
(2)	65°00.120'N	25°24.839'E
(3)	65°00.185'N	25°25.156'E
(4)	65°00.172'N	25°25.251'E

5		57, 119.B, 845, 846, 846.A		
Add		Between the following positions: Delete former edge line	(1) 65°00.120'N 25°24.839'E (2) 65°00.185'N 25°25.156'E (3) 65°00.172'N 25°25.251'E (4) 65°00.182'N 25°25.271'E (5) 65°00.190'N 25°25.251'E (6) 65°00.348'N 25°25.693'E (7) 65°00.371'N 25°25.652'E (8) 65°00.195'N 25°25.082'E (9) 65°00.144'N 25°24.807'E	
6		57, 119.B, 845, 846, 846.A		
Amend			65°00.15'N 25°24.90'E	
7		119.B, 846.A		
Amend			65°00.35'N 25°25.61'E	
8		57, 119.B, 845, 846, 846.A		
Add		Between the following positions:	(1) 65°00.009'N 25°24.331'E (2) 65°00.021'N 25°24.341'E (3) 64°59.964'N 25°24.641'E (4) 64°59.964'N 25°24.686'E (5) 64°59.977'N 25°24.661'E	
9		119.B, 846.A		
Amend			64°59.94'N 25°24.75'E	
10		57, 119.B, 845, 846, 846.A		
Add		Between the following positions: Delete former edge line	(1) 64°59.921'N 25°24.770'E (2) 64°59.931'N 25°24.798'E (3) 64°59.864'N 25°24.927'E (4) 64°59.854'N 25°24.898'E	
11		57, 119.B, 845, 846, 846.A		
Add		Between the following positions: Delete former edge line	(1) 64°59.854'N 25°24.898'E (2) 64°59.864'N 25°24.927'E (3) 64°59.826'N 25°25.002'E (4) 64°59.816'N 25°24.974'E	
12		57, 119.B, 845, 846, 846.A		
Add		Between the following positions:	(1) 64°59.836'N 25°24.982'E (2) 64°59.826'N 25°25.002'E (3) 64°59.852'N 25°25.029'E (4) 64°59.850'N 25°25.083'E (5) 64°59.845'N 25°25.052'E (6) 64°59.830'N 25°25.006'E (7) 64°59.826'N 25°25.002'E	



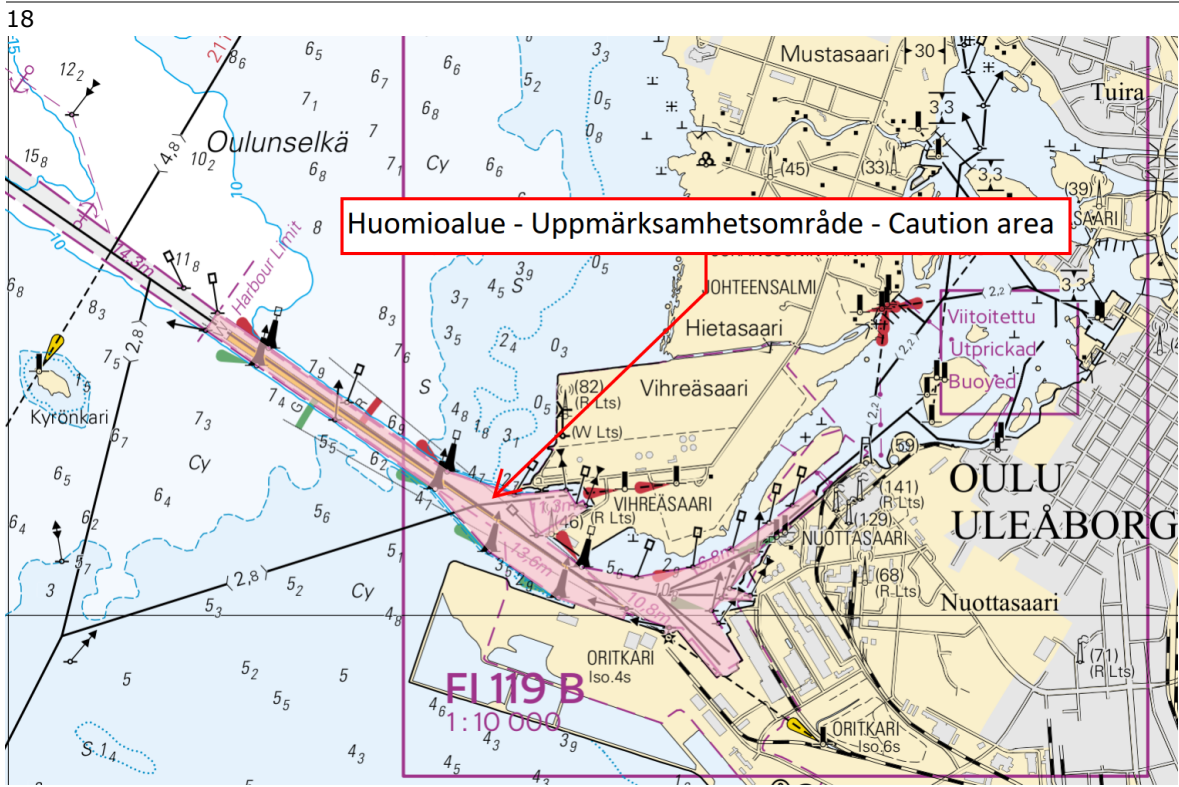


Image for reference, chart extracts not to scale of chart.

(Traficom, Helsinki/Helsingfors 2024)

# Current Preliminary (P) and Temporary (T) notices (30.08.2024)

## Gulf of Finland

T&P	Charts	Gulf of Finland
174(T)/2019 <a href="#">↗</a>	951	SE of Bol'soj Tjuters. Obstructions
296(T)/2020 <a href="#">↗</a>	17, 18, 191, 952, A, B	Helsinki. Sipoo. Areas and borders
20(T)/2021 <a href="#">↗</a>	951, A	TSS OFF ROOSHER ISLAND. Lighthouse Rodser extinguished. Notice repeated. Buoyage
228(T)/2021 <a href="#">↗</a>	951, A	Krestovj. Lighthouse Krestovj extinguished. Notice repeated. Buoyage
304(T)/2021 <a href="#">↗</a>	18, 192, A, B	Helsinki. Vuosaari. Notice repeated. Buoyage. Areas and borders
65(T)/2022 <a href="#">↗</a>	A, S	Vyborg. Destroyed leading beacon. Notice repeated. Buoyage
66(T)/2022 <a href="#">↗</a>	A, S	Vyborg. Light extinguished. Notice repeated. Buoyage
86(T)/2022 <a href="#">↗</a>	18, 191, 952, A, B	Helsinki. Kruunuvuori. Restrictions on small craft traffic. Fairways
90(T)/2022 <a href="#">↗</a>	951	Tiskolovo. Lighthouse Kajbolovo. Buoyage
229(T)/2023 <a href="#">↗</a>	18, 191, A, B	Helsinki. Hernesaari. Buoyage
230(T)/2023 <a href="#">↗</a>	18, 191, A, B	Helsinki. Hernesaari. Buoyage. Areas and borders
270(T)/2023 <a href="#">↗</a>	951, 952	N of Purekkarineem. Floating obstruction withdrawn. Obstructions
35(T)/2024 <a href="#">↗</a>	14, 138, A	Kotka. Lehmäsaari. Destroyed leading light. Buoyage
52(T)/2024 <a href="#">↗</a>	952, A, B	Prangli. Kelnase. Construction works. Areas and borders
80(T)/2024 <a href="#">↗</a>	18, 952, A, B	SW of Helsinginmatala. ODAS spar buoy. Buoyage
187(T)/2024 <a href="#">↗</a>	18, 191, A, B	Helsinki. Hakaniemi. Siltavuorensalmi. Areas and borders
194(T)/2024 <a href="#">↗</a>	18, 191, A, B	Helsinki. Sompasaari. Buoyage

## Archipelago Sea

T&P	Charts	Archipelago Sea
189(T)/2023 <a href="#">↗</a>	26, D	Pargas. Kirjala...Restrictions on traffic. Areas and borders
40(T)/2024 <a href="#">↗</a>	26, 190, D	Naantali. Raumakari. Särkänalmi. Kirkonsalmi. Notice repeated. Buoyage
74(T)/2024 <a href="#">↗</a>	27, 167, D	Pargas. S of Utö. ODAS buoy. Buoyage
130(T)/2024 <a href="#">↗</a>	27, D	Pargas. S of Utö. ODAS buoy. Buoyage
139(T)/2024 <a href="#">↗</a>	25, 26, 37, D	Pargas. Seili. ODAS buoys. Buoyage
168(T)/2024 <a href="#">↗</a>	25, 26, 37, D	Pargas. Seili. ODAS buoy. Buoyage
193(T)/2024 <a href="#">↗</a>	22, 24, B, D	Kimitoön. Simpskär. Buoyage. Fairway areas

## Aland Sea

T&P	Charts	Aland Sea
97(T)/2024 <a href="#">↗</a>	32, 160, C	Mariehamn. Lemströms canal...Restrictions on traffic. Areas and borders
154(T)/2024 <a href="#">↗</a>	31, 935, 953, C	Lemland. Light Lågskär extinguished. Buoyage
155(T)/2024 <a href="#">↗</a>	31, 935, C	TSS SOUTH ÅLAND SEA. Light Flötjan extinguished. Buoyage

## Bothnian Sea

T&P	Charts	Bothnian Sea
30(T)/2022 <a href="#">↗</a>	41, 127, E	Rauma. Ulko-Petäjäs. Areas and borders
160(T)/2022 <a href="#">↗</a>	41, 127, E	Rauma. Otanlahti. Flytande ö. Obstructions
128(T)/2023 <a href="#">↗</a>	953, 954, 955, C	Saltvik. Brändö. Measuring equipment on seabed. Buoyage
253(T)/2023 <a href="#">↗</a>	955	E of Gävle. Light temporarily unlit. Buoyage
8(T)/2024 <a href="#">↗</a>	42, 125, E	Pori. Tahkoluoto. Notice repeated. Buoyage
76(T)/2024 <a href="#">↗</a>	955	E of Gävle. Light Purrutgrund extinguished. Buoyage
95(T)/2024 <a href="#">↗</a>	42, 125, 955, E	Pori. Tahkoluoto. Lighthouse Kaijakari extinguished. Buoyage
120(T)/2024 <a href="#">↗</a>	43, 113, 955, E	Merikarvia. Dredging operations. Areas and borders
121(T)/2024 <a href="#">↗</a>	45, 46, 815, 816	Korsnäs. Measuring equipment on seabed. Obstructions

## The Quark

T&P	Charts	The Quark
238(T)/2022 <a href="#">↗</a>	48, 115, 921, F, M	Vaasa. Vaskiluoto. Notice repeated. Buoyage
126(T)/2023 <a href="#">↗</a>	48, 115, 820	Vaasa. Vaskiluoto. Dredging operations. Areas and borders
142(T)/2023 <a href="#">↗</a>	48, 115, 820, 956, 957, 8061, 8065	Vaasa. Vaskiluoto. Notice repeated. Buoyage. Fairways. Fairway areas
255(T)/2023 <a href="#">↗</a>	48, 115, 820	Vaasa. Vaskiluoto. Notice repeated. Buoyage
256(T)/2023 <a href="#">↗</a>	48, 115, 820	Vaasa. Vaskiluoto. Dredging operations. Notice repeated. Areas and borders
266(T)/2023 <a href="#">↗</a>	47, 825, 956, 957, 8065	TSS in Norra Kvarken. Buoys temporarily withdrawn for the winter. Buoyage
62(T)/2024 <a href="#">↗</a>	48, 819, 822, 956, 957, 8061, 8065	Korsholm. W of Replot. Lighthouse Vaasan Majakka extinguished. Buoyage

# Bay of Bothnia

T&P	Charts	Bay of Bothnia
263(T)/2023 <a href="#">↗</a>	55, 119, 838, 839, 958, 8071	Raahe. Light Heikinkari extinguished. Buoyage
133(T)/2024 <a href="#">↗</a>	59, 854	Tornio. Pensaskari. Buoyage
137(T)/2024 <a href="#">↗</a>	57, 847	Off Oulu. Länsiletto. Buoyage
144(T)/2024 <a href="#">↗</a>	57, 846	Oulu. Pajuniemi. Buoyage
145(T)/2024 <a href="#">↗</a>	57, 846, 958, 8071	Hailuoto. Bridge construction work. Areas and borders
164(T)/2024 <a href="#">↗</a>	57, 119, 846	Oulu. Pikisaari. Fairways
174(T)/2024 <a href="#">↗</a>	958	Off Luleå. Sandgrönnfjärden. Fairway partially closed. Areas and borders
175(T)/2024 <a href="#">↗</a>	60	Kemi. NE of Lighthouse Kemi 1. Construction works. Areas and borders
197(T)/2024 <a href="#">↗</a>	57, 119, 845, 846	Oulu. Port of Oulu. Dredging operations. Areas and borders

# Vuoksi watercourse

T&P	Charts	Vuoksi watercourse
268(T)/2019 <a href="#">↗</a>	M	Kuopio. Kotkatniemi. Buoyage
214(T)/2020 <a href="#">↗</a>		Leppävirta. Hyvärilä. Buoyage
90(T)/2023 <a href="#">↗</a>	921, M	Kuopio. Light Sotkanselkä operational. Notice repeated. Buoyage

# Kymijoki watercourse

T&P	Charts	Kymijoki watercourse
-	-	

# Kokemäijoki watercourse

T&P	Charts	Kokemäijoki watercourse
-	-	

## Oulujoki watercourse

T&P	Charts	Oulujoki watercourse
-	-	

## Paatsjoki watercourse

T&P	Charts	Paatsjoki watercourse
-	-	

## Saimaa Canal

T&P	Charts	Saimaa Canal
10(T)/2024 <a href="#">↗</a>		Saimaa Canal closed for the winter season.

## Northern Baltic

T&P	Charts	Northern Baltic
11(T)/2024 <a href="#">↗</a>	952, 953, 954	Hiiumaa. Tahkuna. Light Lehtma extinguished. Buoyage

## Announcements

T&P	Charts	Announcements
291(T)/2022 <a href="#">↗</a>		Bay of Bothnia. Off Oulu. V-AIS. Notice repeated.
137(T)/2023 <a href="#">↗</a>		Helsinki. Korkeasaari...Restrictions on small craft traffic
102(T)/2024 <a href="#">↗</a>		Pargas. Hessund. Bridge construction work.
173(T)/2024 <a href="#">↗</a>		Kemi. Simo. Ii. Hydrographic surveying in progress.