



# Notices to Mariners

## NtM 25/2024

Notices: 201 - 204 / 10.09.2024



# Table of Contents

Title	Page
Index by Area	2
Index by Chart	3
Archipelago Sea	4
Bothnian Sea	5
Bay of Bothnia	6
Current Preliminary (P) and Temporary (T) notices (10.09.2024)	8

# Index by Area

## Archipelago Sea

### Charts

\*201(T)/2024

23, B

## Bothnian Sea

### Charts

\*202/2024

43, 113, 811, 955

## Bay of Bothnia

### Charts

\*203/2024

59, 854

\*204/2024

57, 119, 845, 846

# Index by Chart

<b>Charts</b>	<b>Notices</b>
23	*201(T)/2024
43	*202/2024
57	*204/2024
59	*203/2024
113	*202/2024
119	*204/2024
811	*202/2024
845	*204/2024
846	*204/2024
854	*203/2024
955	*202/2024
B	*201(T)/2024

# Archipelago Sea

\*201(T)/2024

2024-09-10

Finland. Archipelago Sea. Kimitoön. Strömman. Bridge repair work. Areas and borders

## Charts

23, 23.C

(INT 1186)

## Previous

129/2024 [↗](#)

B641, B641.4, B643

198/2024 [↗](#)

Time: 30 September - 11 October 2024

1

Bascule bridge of Strömman kanal is closed between 30 September – 11 October 2024. The channel under the bridge is open during the repair work.

2

23, 23.C, B641, B641.4, B643

Add

Bascule bridge

60°11.26'N

22°52.10'E

3

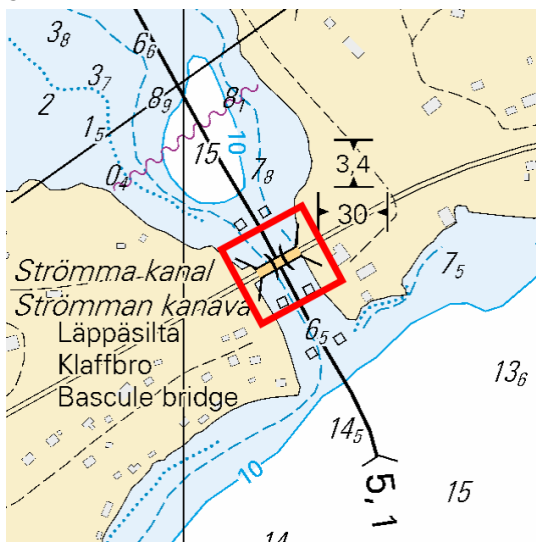


Image for reference, chart extracts not to scale of chart.

(Väylävirasto/Trafikledsverket/Finnish Transport Infrastructure Agency, 2024)

# Bothnian Sea

\*202/2024

2024-09-10

Finland. Bothnian Sea. Merikarvia. Dredging operations. Operations completed. Areas and borders

Charts		Previous
43	(INT 1134)	120/2024 <a href="#">↗</a>
113.A	(INT 11351)	120/2024 <a href="#">↗</a>
811, 811.B		/
955		189/2024 <a href="#">↗</a>

Cancelled: 120(T)/2024 [↗](#)

1	43, 113.A, 811, 811.B, 955			
Delete	Between the following positions:	(1)	61°52.66'N	21°23.62'E
		(2)	61°51.14'N	21°27.25'E

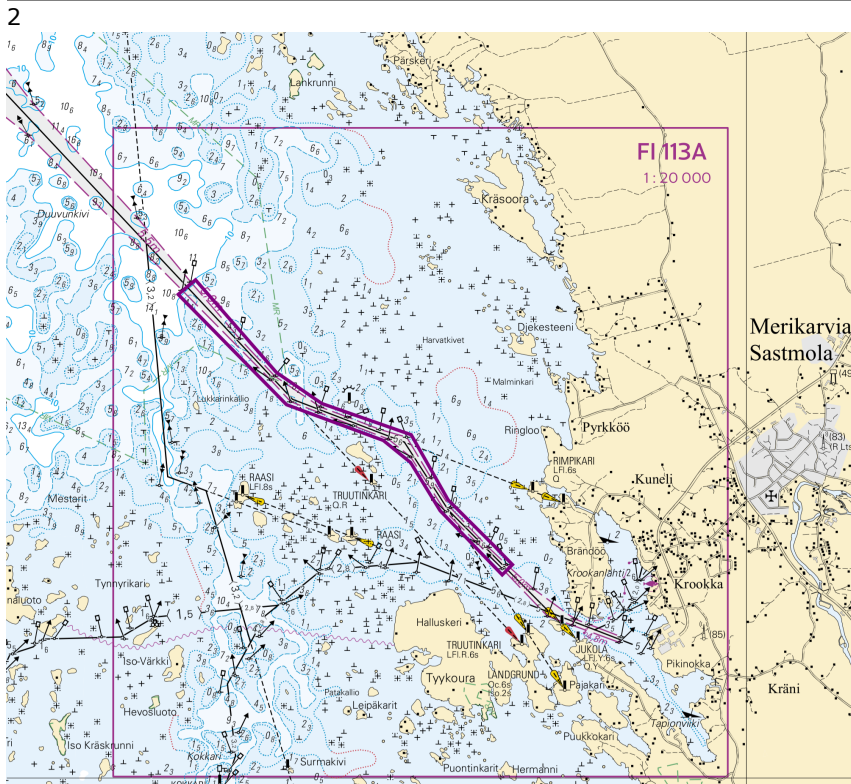


Image for reference, chart extracts not to scale of chart.

(Väylävirasto/Trafikledsverket/Finnish Transport Infrastructure Agency, 2024)

# Bay of Bothnia

\*203/2024


2024-09-10

Finland. Bay of Bothnia. Tornio. Pensaskari. Operations completed.  
Buoyage

Charts		Previous
59	(INT 1150)	133/2024 <a href="#">↗</a>
854		133/2024 <a href="#">↗</a>

Cancelled: 133(T)/2024 [↗](#)

---

1	59, 854				
Add					
	EUROPA 31m	65°39.904'N	24°13.031'E	22555, (C5694.2)	

---

2	59, 854				
Add					
	PORTTI 35m	65°40.034'N	24°12.156'E	22558, (C5694.3)	

(Väylävirasto/Trafikledsverket/Finnish Transport Infrastructure Agency, 2024)

---

---


\*204/2024

2024-09-10

Finland. Bay of Bothnia. Oulu. Port of Oulu. Buoyage

Charts		Previous
57	(INT 1148)	200/2024 <a href="#">↗</a>
119.B	(INT 11461)	200/2024 <a href="#">↗</a>
845		200/2024 <a href="#">↗</a>
846, 846.A		200/2024 <a href="#">↗</a>

---

1	57, 119.B, 845, 846, 846.A				
Move					
	ORITKARI Iso.6s	<b>From</b> 64°59.617'N	25°25.719'E		
		<b>To</b> 64°59.727'N	25°25.344'E	8991, (C4166.1)	

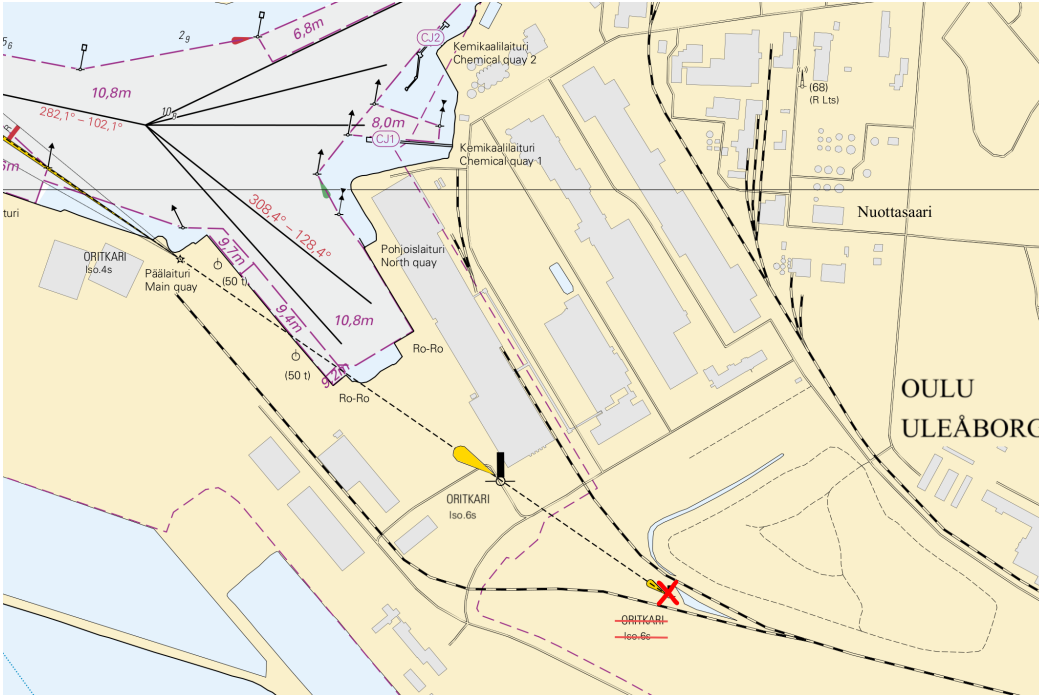


Image for reference, chart extracts not to scale of chart.

(Traficom, Helsinki/Helsingfors 2024)

# Current Preliminary (P) and Temporary (T) notices (10.09.2024)

## Gulf of Finland

T&P	Charts	Gulf of Finland
174(T)/2019 <a href="#">↗</a>	951	SE of Bol'soj Tjuters. Obstructions
296(T)/2020 <a href="#">↗</a>	17, 18, 191, 952, A, B	Helsinki. Sipoo. Areas and borders
20(T)/2021 <a href="#">↗</a>	951, A	TSS OFF ROOSHER ISLAND. Lighthouse Rodser extinguished. Notice repeated. Buoyage
228(T)/2021 <a href="#">↗</a>	951, A	Krestovjy. Lighthouse Krestovjy extinguished. Notice repeated. Buoyage
304(T)/2021 <a href="#">↗</a>	18, 192, A, B	Helsinki. Vuosaari. Notice repeated. Buoyage. Areas and borders
65(T)/2022 <a href="#">↗</a>	A, S	Vyborg. Destroyed leading beacon. Notice repeated. Buoyage
66(T)/2022 <a href="#">↗</a>	A, S	Vyborg. Light extinguished. Notice repeated. Buoyage
86(T)/2022 <a href="#">↗</a>	18, 191, 952, A, B	Helsinki. Kruunuvuori. Restrictions on small craft traffic. Fairways
90(T)/2022 <a href="#">↗</a>	951	Tiskolovo. Lighthouse Kajbolovo. Buoyage
229(T)/2023 <a href="#">↗</a>	18, 191, A, B	Helsinki. Hernesaari. Buoyage
230(T)/2023 <a href="#">↗</a>	18, 191, A, B	Helsinki. Hernesaari. Buoyage. Areas and borders
270(T)/2023 <a href="#">↗</a>	951, 952	N of Purekkarineem. Floating obstruction withdrawn. Obstructions
35(T)/2024 <a href="#">↗</a>	14, 138, A	Kotka. Lehmäsaari. Destroyed leading light. Buoyage
52(T)/2024 <a href="#">↗</a>	952, A, B	Prangli. Kelnase. Construction works. Areas and borders
80(T)/2024 <a href="#">↗</a>	18, 952, A, B	SW of Helsinginmatala. ODAS spar buoy. Buoyage
194(T)/2024 <a href="#">↗</a>	18, 191, A, B	Helsinki. Sompasaari. Buoyage

## Archipelago Sea

T&P	Charts	Archipelago Sea
189(T)/2023 <a href="#">↗</a>	26, D	Pargas. Kirjala...Restrictions on traffic. Areas and borders
40(T)/2024 <a href="#">↗</a>	26, 190, D	Naantali. Raumakari. Särkäsalmi. Kirkonsalmi. Notice repeated. Buoyage
74(T)/2024 <a href="#">↗</a>	27, 167, D	Pargas. S of Utö. ODAS buoy. Buoyage
130(T)/2024 <a href="#">↗</a>	27, D	Pargas. S of Utö. ODAS buoy. Buoyage
139(T)/2024 <a href="#">↗</a>	25, 26, 37, D	Pargas. Seili. ODAS buoys. Buoyage
168(T)/2024 <a href="#">↗</a>	25, 26, 37, D	Pargas. Seili. ODAS buoy. Buoyage
193(T)/2024 <a href="#">↗</a>	22, 24, B, D	Kimitoön. Simpskär. Buoyage. Fairway areas
201(T)/2024 <a href="#">↗</a>	23, B	Kimitoön. Strömman. Bridge repair work. Areas and borders

## Aland Sea

<b>T&amp;P</b>	<b>Charts</b>	<b>Aland Sea</b>
97(T)/2024 <a href="#">↗</a>	32, 160, C	Mariehamn. Lemströms canal...Restrictions on traffic. Areas and borders
154(T)/2024 <a href="#">↗</a>	31, 935, 953, C	Lemland. Light Lågskär extinguished. Buoyage
155(T)/2024 <a href="#">↗</a>	31, 935, C	TSS SOUTH ÅLAND SEA. Light Flötjan extinguished. Buoyage

## Bothnian Sea

<b>T&amp;P</b>	<b>Charts</b>	<b>Bothnian Sea</b>
30(T)/2022 <a href="#">↗</a>	41, 127, E	Rauma. Ulko-Petäjäs. Areas and borders
160(T)/2022 <a href="#">↗</a>	41, 127, E	Rauma. Otanlahti. Flytande ö. Obstructions
128(T)/2023 <a href="#">↗</a>	953, 954, 955, C	Saltvik. Brändö. Measuring equipment on seabed. Buoyage
253(T)/2023 <a href="#">↗</a>	955	E of Gävle. Light temporarily unlit. Buoyage
8(T)/2024 <a href="#">↗</a>	42, 125, E	Pori. Tahkoluoto. Notice repeated. Buoyage
76(T)/2024 <a href="#">↗</a>	955	E of Gävle. Light Purrutgrund extinguished. Buoyage
95(T)/2024 <a href="#">↗</a>	42, 125, 955, E	Pori. Tahkoluoto. Lighthouse Kaijakari extinguished. Buoyage
121(T)/2024 <a href="#">↗</a>	45, 46, 815, 816	Korsnäs. Measuring equipment on seabed. Obstructions

## The Quark

<b>T&amp;P</b>	<b>Charts</b>	<b>The Quark</b>
238(T)/2022 <a href="#">↗</a>	48, 115, 921, F, M	Vaasa. Vaskiluoto. Notice repeated. Buoyage
126(T)/2023 <a href="#">↗</a>	48, 115, 820	Vaasa. Vaskiluoto. Dredging operations. Areas and borders
142(T)/2023 <a href="#">↗</a>	48, 115, 820, 956, 957, 8061, 8065	Vaasa. Vaskiluoto. Notice repeated. Buoyage. Fairways. Fairway areas
255(T)/2023 <a href="#">↗</a>	48, 115, 820	Vaasa. Vaskiluoto. Notice repeated. Buoyage
256(T)/2023 <a href="#">↗</a>	48, 115, 820	Vaasa. Vaskiluoto. Dredging operations. Notice repeated. Areas and borders
266(T)/2023 <a href="#">↗</a>	47, 825, 956, 957, 8065	TSS in Norra Kvarken. Buoys temporarily withdrawn for the winter. Buoyage
62(T)/2024 <a href="#">↗</a>	48, 819, 822, 956, 957, 8061, 8065	Korsholm. W of Replot. Lighthouse Vaasan Majakka extinguished. Buoyage

# Bay of Bothnia

T&P	Charts	Bay of Bothnia
263(T)/2023 <a href="#">↗</a>	55, 119, 838, 839, 958, 8071	Raahe. Light Heikinkari extinguished. Buoyage
137(T)/2024 <a href="#">↗</a>	57, 847	Off Oulu. Länsiletto. Buoyage
144(T)/2024 <a href="#">↗</a>	57, 846	Oulu. Pajuniemi. Buoyage
145(T)/2024 <a href="#">↗</a>	57, 846, 958, 8071	Hailuoto. Bridge construction work. Areas and borders
164(T)/2024 <a href="#">↗</a>	57, 119, 846	Oulu. Pikisaari. Fairways
174(T)/2024 <a href="#">↗</a>	958	Off Luleå. Sandgrönfjärden. Fairway partially closed. Areas and borders
175(T)/2024 <a href="#">↗</a>	60	Kemi. NE of Lighthouse Kemi 1. Construction works. Areas and borders
197(T)/2024 <a href="#">↗</a>	57, 119, 845, 846	Oulu. Port of Oulu. Dredging operations. Areas and borders

# Vuoksi watercourse

T&P	Charts	Vuoksi watercourse
268(T)/2019 <a href="#">↗</a>	M	Kuopio. Kotkatniemi. Buoyage
214(T)/2020 <a href="#">↗</a>		Leppävirta. Hyvärilä. Buoyage
90(T)/2023 <a href="#">↗</a>	921, M	Kuopio. Light Sotkanselkä operational. Notice repeated. Buoyage

# Kymijoki watercourse

T&P	Charts	Kymijoki watercourse
-	-	

# Kokemäkijoki watercourse

T&P	Charts	Kokemäkijoki watercourse
-	-	

## Oulujoki watercourse

T&P	Charts	Oulujoki watercourse
-	-	

## Paatsjoki watercourse

T&P	Charts	Paatsjoki watercourse
-	-	

## Saimaa Canal

T&P	Charts	Saimaa Canal
-	-	

## Northern Baltic

T&P	Charts	Northern Baltic
11(T)/2024 <a href="#">↗</a>	952, 953, 954	Hiiumaa. Tahkuna. Light Lehtma extinguished. Buoyage

## Announcements

T&P	Charts	Announcements
291(T)/2022 <a href="#">↗</a>		Bay of Bothnia. Off Oulu. V-AIS. Notice repeated.
137(T)/2023 <a href="#">↗</a>		Helsinki. Korkeasaari...Restrictions on small craft traffic
102(T)/2024 <a href="#">↗</a>		Pargas. Hessund. Bridge construction work.
173(T)/2024 <a href="#">↗</a>		Kemi. Simo. Ii. Hydrographic surveying in progress.