



Notices to Mariners

NtM 27/2024

Notices: 208 - 214 / 30.09.2024



Table of Contents

Title	Page
Index by Area	2
Index by Chart	3
Archipelago Sea	4
Bothnian Sea	7
Bay of Bothnia	8
Announcements	11
Current Preliminary (P) and Temporary (T) notices (30.09.2024)	13

Index by Area

Archipelago Sea

Charts

*210/2024	22, 24, B, D
*211/2024	32, 162, C

Bothnian Sea

Charts

*213/2024	44, 113, 813
-----------	--------------

Bay of Bothnia

Charts

*208(T)/2024	57, 846, 8071
*214/2024	55, 119, 838, 839

Announcements

Charts

*209(T)/2024
*212(P)/2024

Index by Chart

Charts	Notices
22	*210/2024
24	*210/2024
32	*211/2024
44	*213/2024
55	*214/2024
57	*208(T)/2024
113	*213/2024
119	*214/2024
162	*211/2024
813	*213/2024
838	*214/2024
839	*214/2024
846	*208(T)/2024
8071	*208(T)/2024
B	*210/2024
C	*211/2024
D	*210/2024

Archipelago Sea







*210/2024

2024-09-30

Finland. Archipelago Sea. Kimitoön. Simpskär. Buoyage. Fairway areas

Charts		Previous
22	(INT 1254)	193/2024 ↗
24	(INT 1187)	193/2024 ↗
B647		205/2024 ↗
D701		206/2024 ↗

Cancelled: 193(T)/2024 [↗](#)

1	Fairway area and the buoys are restored			
2	22, 24, B647, D701			
Add		59°53.42'N	22°18.73'E	3800
3	22, 24, B647, D701			
Add		59°53.23'N	22°18.78'E	5456
4	22, 24, B647, D701			
Delete		59°53.390'N	22°18.711'E	88898
5	22, 24, B647, D701			
Delete		59°53.305'N	22°18.778'E	88896
6	22, 24, B647, D701			
Delete		Between the following positions:	(1) 59°53.418'N	22°18.905'E
			(2) 59°53.390'N	22°18.711'E
		Delete former edge line	(3) 59°53.399'N	22°17.424'E
7	22, 24, B647, D701			
Delete		Between the following positions:	(1) 59°53.229'N	22°20.659'E
			(2) 59°53.305'N	22°18.778'E
		Delete former edge line	(3) 59°53.153'N	22°15.600'E

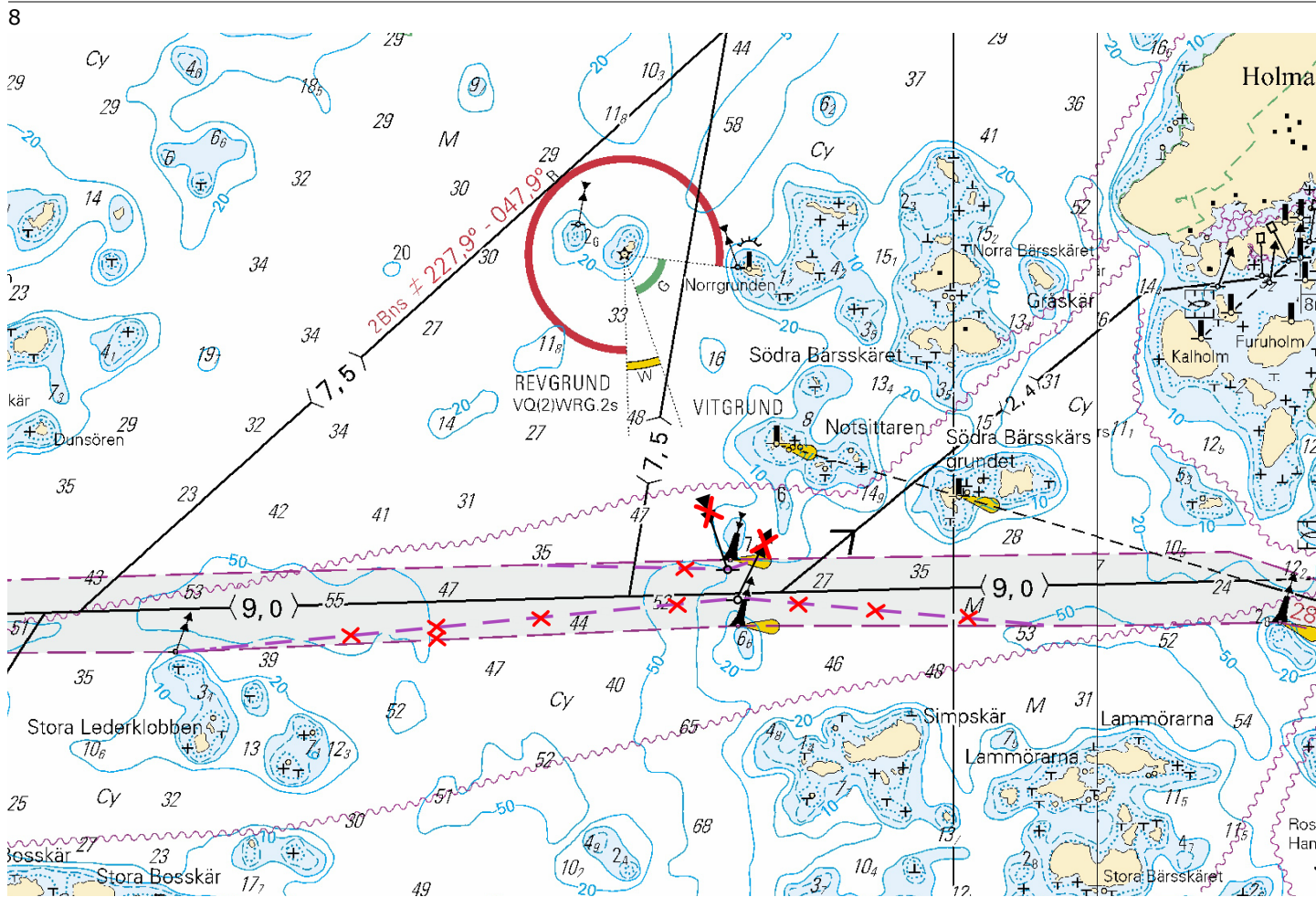


Image for reference, chart extracts not to scale of chart.

(Traficom, Helsinki/Helsingfors 2024)

*211/2024 2024-09-30

Finland. Archipelago Sea. Lumparland. Föglö. Buoyage. Fairways

Charts		Previous
32	(INT 1195)	170/2024 ↗
162	(INT 1157)	170/2024 ↗
C753, C753.2		189/2024 ↗

References: 10/2019 [↗](#)

1	32, 162, C753, C753.2			
Delete		Between the following positions:	(1) 60°03.654'N 20°19.329'E	(2) 60°03.918'N 20°16.204'E
			(3) 60°04.010'N 20°16.054'E	
2	32, 162, C753, C753.2			
Add		Between the following positions:	(1) 60°03.654'N 20°19.329'E	(2) 60°03.936'N 20°16.174'E
			(3) 60°03.965'N 20°16.102'E	
3	32, 162, C753, C753.2			
Delete			60°03.938'N 20°16.226'E	6742

4		32, 162, C753, C753.2			
Move					
			From	60°03.949'N	20°16.095'E
			To	60°03.941'N	20°16.107'E
					6740

5		32, 162, C753, C753.2			
Add					
				60°03.955'N	20°16.097'E
					88803

6		32, 162, C753, C753.2			
Amend					
	37m				
			40m		
				60°03.931'N	20°16.068'E
					84954

(Traficom, Helsinki/Helsingfors 2024)

Bothnian Sea

*213/2024

2024-09-30

Finland. Bothnian Sea. Kristinestad. Nybådan. Buoyage

Charts		Previous
44	(INT 1135)	42/2024 ↗
113.C	(INT 11351)	202/2024 ↗
813		42/2024 ↗

1 44, 113.C, 813

Move



From

62°16.954'N 21°13.094'E

To

62°17.036'N 21°13.044'E 8072

(Traficom, Helsinki/Helsingfors 2024)

Bay of Bothnia

*208(T)/2024

2024-09-24

Finland. Bay of Bothnia. Hailuoto. Bridge construction work. Areas and borders

Charts	Previous
57	(INT 1148) 204/2024 ↗
846	204/2024 ↗
8071/INDEX	163/2024 ↗

Time: to approx. 20 October 2024

References: 145(T)/2024 [↗](#), 163/2024 [↗](#)

1

The horizontal clearance of the Huikku working bridge of the Hailuoto connection narrows and is about 18m from time to time. Mariners are requested to navigate with caution and avoid creating undue wash.

2

57, 846, 8071/INDEX

Add

Traffic restrictions

65°02.2'N

25°05.8'E

3

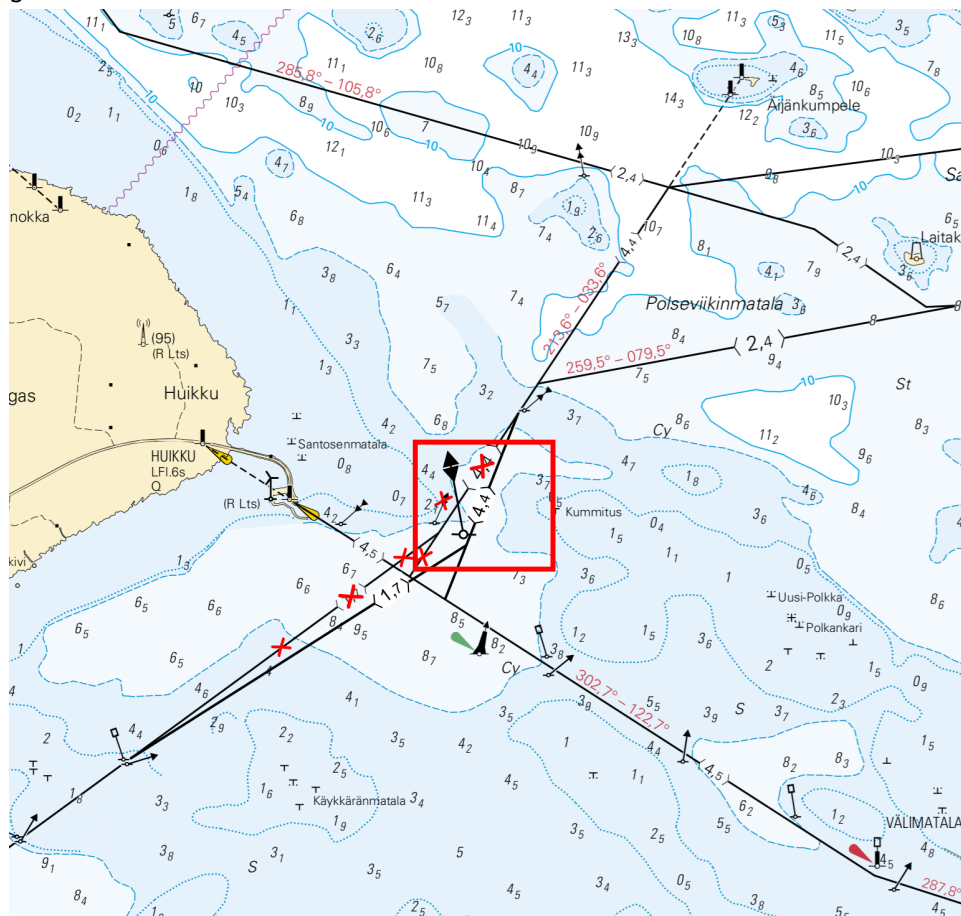


Image for reference, chart extracts not to scale of chart.

(Väylävirasto/Trafikledsverket/Finnish Transport Infrastructure Agency, 2024)

*214/2024







2024-09-30

Finland. Bay of Bothnia. Port of Raahе. (N2000) (BSCD2000). Fairway areas

Charts

Previous

55	(INT 1146)	113/2024 ↗
119.A	(INT 11461)	204/2024 ↗
838		113/2024 ↗
839, 839.A		111/2024 ↗

1	55, 119.A, 838, 839, 839.A			
Delete		Between the following positions:	(1) 64°39.30'N 24°24.50'E	
			(2) 64°39.46'N 24°24.41'E	
			(3) 64°39.42'N 24°24.71'E	
			(4) 64°39.36'N 24°24.61'E	
			(5) 64°39.31'N 24°24.62'E	
2	55, 119.A, 838, 839, 839.A			
Delete		Between the following positions:	(1) 64°39.27'N 24°24.52'E	
			(2) 64°39.30'N 24°24.50'E	
			(3) 64°39.31'N 24°24.62'E	
			(4) 64°39.27'N 24°24.62'E	
3	55, 119.A, 838, 839, 839.A			
Delete		Between the following positions:	(1) 64°39.22'N 24°24.54'E	
			(2) 64°39.27'N 24°24.52'E	
			(3) 64°39.27'N 24°24.62'E	
			(4) 64°39.23'N 24°24.63'E	
4	55, 119.A, 838, 839, 839.A			
Delete		Between the following positions:	(1) 64°39.42'N 24°24.71'E	
			(2) 64°39.42'N 24°24.69'E	
			(3) 64°39.49'N 24°24.80'E	
			(4) 64°39.49'N 24°24.82'E	
5	55, 119.A, 838, 839, 839.A			
Add		Between the following positions:	(1) 64°39.221'N 24°24.549'E	
			(2) 64°39.265'N 24°24.522'E	
			(3) 64°39.268'N 24°24.617'E	
			(4) 64°39.225'N 24°24.622'E	
6	55, 119.A, 838, 839, 839.A			
Add		Between the following positions:	(1) 64°39.265'N 24°24.523'E	
			(2) 64°39.406'N 24°24.438'E	
			(3) 64°39.459'N 24°24.413'E	
			(4) 64°39.421'N 24°24.496'E	
			(5) 64°39.363'N 24°24.530'E	
			(6) 64°39.364'N 24°24.609'E	
			(7) 64°39.268'N 24°24.617'E	

7	55, 119.A, 838, 839, 839.A		(1) 64°39.364'N 24°24.530'E
Add	8,8m	Between the following positions:	(2) 64°39.421'N 24°24.496'E
			(3) 64°39.459'N 24°24.413'E
			(4) 64°39.422'N 24°24.711'E
			(5) 64°39.363'N 24°24.609'E

8	55, 119.A, 838, 839, 839.A		(1) 64°39.422'N 24°24.711'E
Add	8,1m	Between the following positions:	(2) 64°39.438'N 24°24.712'E
			(3) 64°39.489'N 24°24.799'E
			(4) 64°39.489'N 24°24.823'E

9	55, 119.A, 838, 839, 839.A		(1) 64°39.539'N 24°24.982'E
Add	4,8m	Between the following positions:	(2) 64°39.544'N 24°24.932'E
			(3) 64°39.585'N 24°24.957'E
			(4) 64°39.585'N 24°24.976'E

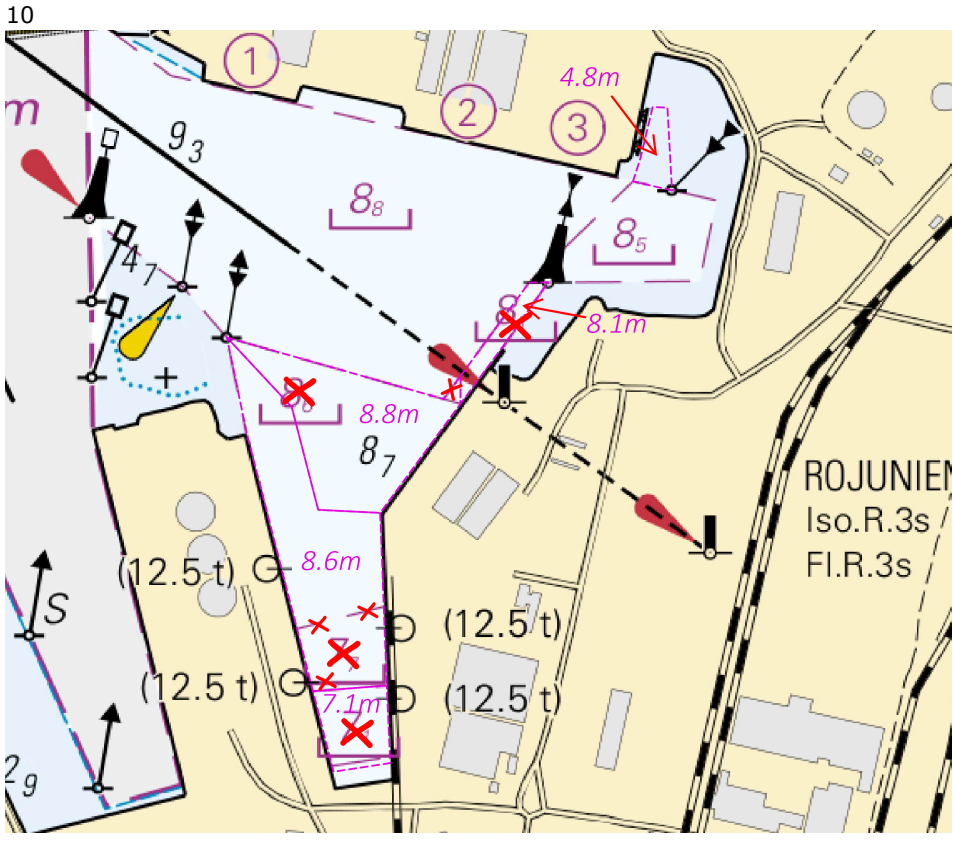


Image for reference, chart extracts not to scale of chart.

(Traficom, Helsinki/Helsingfors 2024)

Announcements

*209(T)/2024

2024-09-30

Finland. Gulf of Finland. Helsinki. Rowing for Baltic Herring.

Charts

Previous

Time: 6 October 2024, 11.00 hours until about 13.00 hours local Finnish time

1

Baltic Herring row (Silakkasoutu) for the benefit of clean local waters and the Baltic Sea will be rowed by church boats in Helsinki on the opening day of the Herring Market, Sunday 6th of October 2024.

Ships are requested to navigate with caution, to keep clear of rowers and avoid creating wash.

More information: <https://www.silakkasoutu.fi/rowing-for-herring/>

2

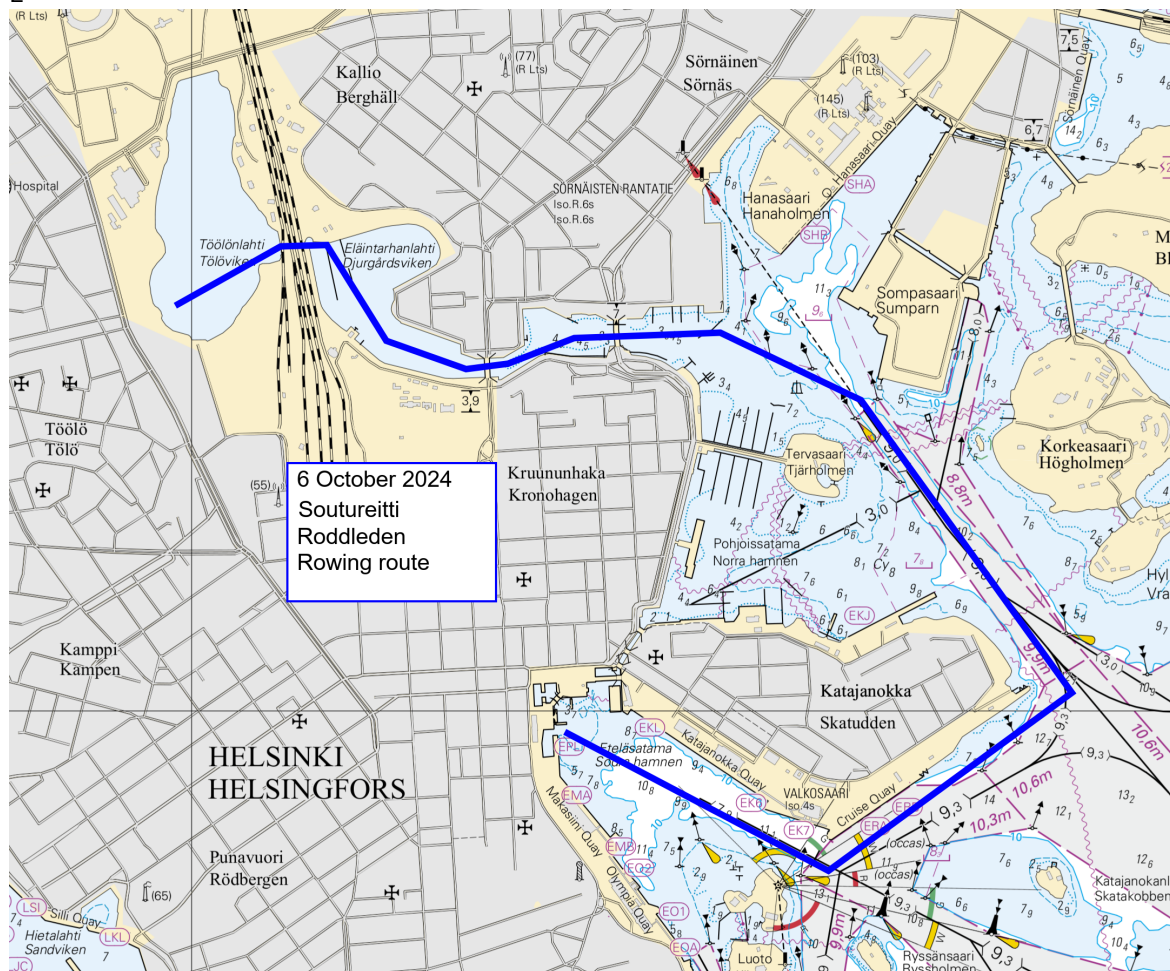


Image for reference, chart extracts not to scale of chart.

(Silakkasoutu / Finlandia Hall rotaryklubi ry, 2024)

*212(P)/2024

2024-09-30

Finland. Åland Sea. Chart to be withdrawn.

Charts

Previous

Time: 20 December 2024

1

Chart 935 Eteläinen Ahvenanmeri will be withdrawn on 20 December 2024. Mariners will be advised to use chart 953 Saaristomeri (1:250000) or the Swedish chart SE 619 (INT 1240) Sea of Åland (1:150000) instead.

(Traficom, Helsinki/Helsingfors 2024)

Current Preliminary (P) and Temporary (T) notices (30.09.2024)

Gulf of Finland

T&P	Charts	Gulf of Finland
174(T)/2019 ↗	951	SE of Bol'soj Tjuters. Obstructions
296(T)/2020 ↗	17, 18, 191, 952, A, B	Helsinki. Sipoo. Areas and borders
20(T)/2021 ↗	951, A	TSS OFF ROOSHER ISLAND. Lighthouse Rodser extinguished. Notice repeated. Buoyage
228(T)/2021 ↗	951, A	Krestovyy. Lighthouse Krestovyy extinguished. Notice repeated. Buoyage
304(T)/2021 ↗	18, 192, A, B	Helsinki. Vuosaari. Notice repeated. Buoyage. Areas and borders
65(T)/2022 ↗	A, S	Vyborg. Destroyed leading beacon. Notice repeated. Buoyage
66(T)/2022 ↗	A, S	Vyborg. Light extinguished. Notice repeated. Buoyage
86(T)/2022 ↗	18, 191, 952, A, B	Helsinki. Kruunuvuori. Restrictions on small craft traffic. Fairways
90(T)/2022 ↗	951	Tiskolovo. Lighthouse Kajbolovo. Buoyage
229(T)/2023 ↗	18, 191, A, B	Helsinki. Hernesaari. Buoyage
230(T)/2023 ↗	18, 191, A, B	Helsinki. Hernesaari. Buoyage. Areas and borders
270(T)/2023 ↗	951, 952	N of Purekkarineem. Floating obstruction withdrawn. Obstructions
35(T)/2024 ↗	14, 138, A	Kotka. Lehmäsaari. Destroyed leading light. Buoyage
52(T)/2024 ↗	952, A, B	Prangli. Kelnase. Construction works. Areas and borders
80(T)/2024 ↗	18, 952, A, B	SW of Helsinginmatala. ODAS spar buoy. Buoyage
194(T)/2024 ↗	18, 191, A, B	Helsinki. Sompasaari. Buoyage

Archipelago Sea

T&P	Charts	Archipelago Sea
189(T)/2023 ↗	26, D	Pargas. Kirjala...Restrictions on traffic. Areas and borders
40(T)/2024 ↗	26, 190, D	Naantali. Raumakari. Särkäsalmi. Kirkonsalmi. Notice repeated. Buoyage
74(T)/2024 ↗	27, 167, D	Pargas. S of Utö. ODAS buoy. Buoyage
130(T)/2024 ↗	27, D	Pargas. S of Utö. ODAS buoy. Buoyage
168(T)/2024 ↗	25, 26, 37, D	Pargas. Seili. ODAS buoy. Buoyage
201(T)/2024 ↗	23, B	Kimitoön. Strömman. Bridge repair work. Areas and borders

Aland Sea

T&P	Charts	Aland Sea
97(T)/2024 ↗	32, 160, C	Mariehamn. Lemströms canal...Restrictions on traffic. Areas and borders
154(T)/2024 ↗	31, 935, 953, C	Lemland. Light Lågskär extinguished. Buoyage
155(T)/2024 ↗	31, 935, C	TSS SOUTH ÅLAND SEA. Light Flötjan extinguished. Buoyage

Bothnian Sea

T&P	Charts	Bothnian Sea
30(T)/2022 ↗	41, 127, E	Rauma. Ulko-Petäjäs. Areas and borders
160(T)/2022 ↗	41, 127, E	Rauma. Otanlahti. Flytande ö. Obstructions
128(T)/2023 ↗	953, 954, 955, C	Saltvik. Brändö. Measuring equipment on seabed. Buoyage
8(T)/2024 ↗	42, 125, E	Pori. Tahkoluoto. Notice repeated. Buoyage
76(T)/2024 ↗	955	E of Gävle. Light Purrutgrund extinguished. Buoyage
95(T)/2024 ↗	42, 125, 955, E	Pori. Tahkoluoto. Lighthouse Kaijakari extinguished. Buoyage
121(T)/2024 ↗	45, 46, 815, 816	Korsnäs. Measuring equipment on seabed. Obstructions

The Quark

T&P	Charts	The Quark
238(T)/2022 ↗	48, 115, 921, F, M	Vaasa. Vaskiluoto. Notice repeated. Buoyage
126(T)/2023 ↗	48, 115, 820	Vaasa. Vaskiluoto. Dredging operations. Areas and borders
142(T)/2023 ↗	48, 115, 820, 956, 957, 8061, 8065	Vaasa. Vaskiluoto. Notice repeated. Buoyage. Fairways. Fairway areas
255(T)/2023 ↗	48, 115, 820	Vaasa. Vaskiluoto. Notice repeated. Buoyage
256(T)/2023 ↗	48, 115, 820	Vaasa. Vaskiluoto. Dredging operations. Notice repeated. Areas and borders
266(T)/2023 ↗	47, 825, 956, 957, 8065	TSS in Norra Kvarken. Buoys temporarily withdrawn for the winter. Buoyage
62(T)/2024 ↗	48, 819, 822, 956, 957, 8061, 8065	Korsholm. W of Replot. Lighthouse Vaasan Majakka extinguished. Buoyage

Bay of Bothnia

T&P	Charts	Bay of Bothnia
263(T)/2023 ↗	55, 119, 838, 839, 958, 8071	Raahe. Light Heikinkari extinguished. Buoyage
137(T)/2024 ↗	57, 847	Off Oulu. Länsiletto. Buoyage
144(T)/2024 ↗	57, 846	Oulu. Pajuniemi. Buoyage
145(T)/2024 ↗	57, 846, 958, 8071	Hailuoto. Bridge construction work. Areas and borders
164(T)/2024 ↗	57, 119, 846	Oulu. Pikisaari. Fairways
174(T)/2024 ↗	958	Off Luleå. Sandgrönnfjärden. Fairway partially closed. Areas and borders
175(T)/2024 ↗	60	Kemi. NE of Lighthouse Kemi 1. Construction works. Areas and borders
197(T)/2024 ↗	57, 119, 845, 846	Oulu. Port of Oulu. Dredging operations. Areas and borders
208(T)/2024 ↗	57, 846, 8071	Hailuoto. Bridge construction work. Areas and borders

Vuoksi watercourse

T&P	Charts	Vuoksi watercourse
268(T)/2019 ↗	M	Kuopio. Kotkatniemi. Buoyage
214(T)/2020 ↗		Leppävirta. Hyvärilä. Buoyage
90(T)/2023 ↗	921, M	Kuopio. Light Sotkanselkä operational. Notice repeated. Buoyage

Kymijoki watercourse

T&P	Charts	Kymijoki watercourse
-	-	

Kokemäijoki watercourse

T&P	Charts	Kokemäijoki watercourse
-	-	

Oulujoki watercourse

T&P	Charts	Oulujoki watercourse
-	-	

Paatsjoki watercourse

T&P	Charts	Paatsjoki watercourse
-	-	

Saimaa Canal

T&P	Charts	Saimaa Canal
-	-	

Northern Baltic

T&P	Charts	Northern Baltic
11(T)/2024 ↗	952, 953, 954	Hiiumaa. Tahkuna. Light Lehtma extinguished. Buoyage

Announcements

T&P	Charts	Announcements
291(T)/2022 ↗		Bay of Bothnia. Off Oulu. V-AIS. Notice repeated.
137(T)/2023 ↗		Helsinki. Korkeasaari...Restrictions on small craft traffic
102(T)/2024 ↗		Pargas. Hessund. Bridge construction work.
173(T)/2024 ↗		Kemi. Simo. Ii. Hydrographic surveying in progress.
209(T)/2024 ↗		Helsinki. Rowing for Baltic Herring.
212(P)/2024 ↗		Chart to be withdrawn.