



Notices to Mariners

NtM 30/2024

Notices: 228 - 236 / 31.10.2024



Table of Contents

Title	Page
Index by Area	2
Index by Chart	3
Gulf of Finland	4
Archipelago Sea	5
Bay of Bothnia	6
Vuoksi watercourse	10
Announcements	11
Current Preliminary (P) and Temporary (T) notices (31.10.2024)	13

Index by Area

Gulf of Finland

Charts

*230(T)/2024 18, 191, A, B

Archipelago Sea

Charts

*228/2024 23, B

Bay of Bothnia

Charts

*231(T)/2024 52, 53, 54, 55, 117, 835, 836, 837, 838, 839, 957, 958, 8061, 8071

*232/2024 55, 56

233/2024 958

*234/2024 57, 846, 8071

Vuoksi watercourse

Charts

*236/2024 M, V

Announcements

Charts

*229(T)/2024

*235/2024

Index by Chart

Charts	Notices
18	*230(T)/2024
23	*228/2024
52	*231(T)/2024
53	*231(T)/2024
54	*231(T)/2024
55	*231(T)/2024, *232/2024
56	*232/2024
57	*234/2024
117	*231(T)/2024
191	*230(T)/2024
835	*231(T)/2024
836	*231(T)/2024
837	*231(T)/2024
838	*231(T)/2024
839	*231(T)/2024
846	*234/2024
957	*231(T)/2024
958	*231(T)/2024, 233/2024
8061	*231(T)/2024
8071	*231(T)/2024, *234/2024
A	*230(T)/2024
B	*228/2024, *230(T)/2024
M	*236/2024
V	*236/2024

Gulf of Finland


*230(T)/2024

2024-10-31

Finland. Gulf of Finland. Helsinki. Melkki. Light Melkki extinguished.
Buoyage

Charts		Previous
18	(INT 1250)	224/2024 ↗
191	(INT 1159)	194/2024 ↗
A626, A626.1, A627		224/2024 ↗
B626, B626.1, B627		228/2024 ↗

Time: Until further notice

1	18, 191, A626, A626.1, A627, B626, B626.1, B627			
Amend	 MELKKI Iso.2s (exting)	60°07.71'N	24°53.13'E	79215, (C5159)

(Traficom, Helsinki/Helsingfors 2024)

Archipelago Sea

*228/2024

2024-10-29

Finland. Archipelago Sea. Kimitoön. Strömman. Operations completed.
Areas and borders

Charts		Previous
23, 23.C	(INT 1186)	201/2024 ↗
B641, B641.4, B643		224/2024 ↗

Cancelled: 201(T)/2024 [↗](#)

1

Bascule bridge is in operation.

2

23, 23.C, B641, B641.4, B643

Delete |

60°11.26'N

22°52.10'E

3

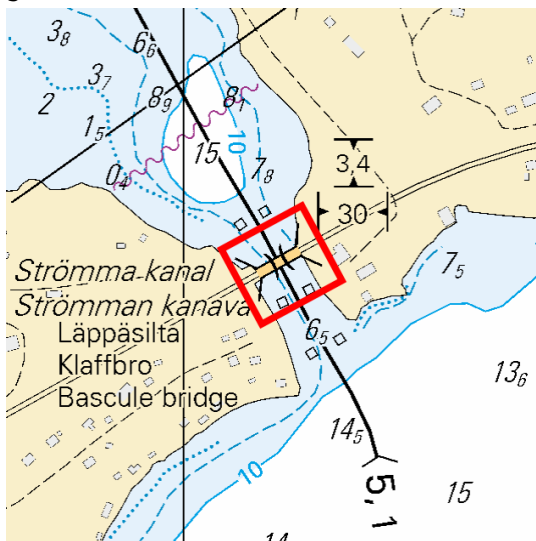


Image for reference, chart extracts not to scale of chart.

(Väylävirasto/Trafikledsverket/Finnish Transport Infrastructure Agency, 2024)

Bay of Bothnia

*231(T)/2024

2024-10-31

Finland. Bay of Bothnia. Kokkola. Lohtaja. Firing exercise. Areas and borders

Charts		Previous
52	(INT 1143)	160/2024 ↗
53	(INT 1144)	172/2024 ↗
54	(INT 1145)	113/2024 ↗
55	(INT 1146)	214/2024 ↗
117.B	(INT 11431)	221/2024 ↗
835		113/2024 ↗
836, 836.A		172/2024 ↗
837		113/2024 ↗
838		214/2024 ↗
839		214/2024 ↗
957	(INT 1208)	207/2024 ↗
958	(INT 1209)	174/2024 ↗
8061/INDEX		207/2024 ↗
8071/INDEX		208/2024 ↗

Time: From 13 November 2024, 07.00 hours to 16 November 24.00 hours local Finnish time, around the clock

1

Firing exercise in week 46 in the Lohtaja area. The danger area extends to the sea area. Mariners in the area are requested to monitor the navigational warnings and radio communications with great attention.

Enquiries: phone 358 299 442 191 or 358 299 210 351. <https://puolustusvoimat.fi/en/current-issues/firings-and-noise>

2

8071/INDEX

52, 53, 54, 55, 117.B, 835, 836, 836.A, 837, 838, 839, 957, 958, 8061/INDEX,

Add

Danger area

- (1) 64°24.70'N 22°33.15'E
- (2) 64°43.58'N 22°59.20'E
- (3) 64°49.15'N 23°21.47'E
- (4) 64°48.08'N 23°40.90'E
- (5) 64°43.77'N 23°55.17'E
- (6) 64°35.07'N 24°06.47'E
- (7) 64°24.72'N 23°56.28'E
- (8) 64°08.20'N 23°21.48'E
- (9) 64°05.57'N 23°08.63'E
- (10) 64°04.75'N 22°59.92'E
- (11) 64°06.47'N 22°41.73'E
- (12) 64°16.02'N 22°27.47'E
- (13) 64°24.70'N 22°33.15'E

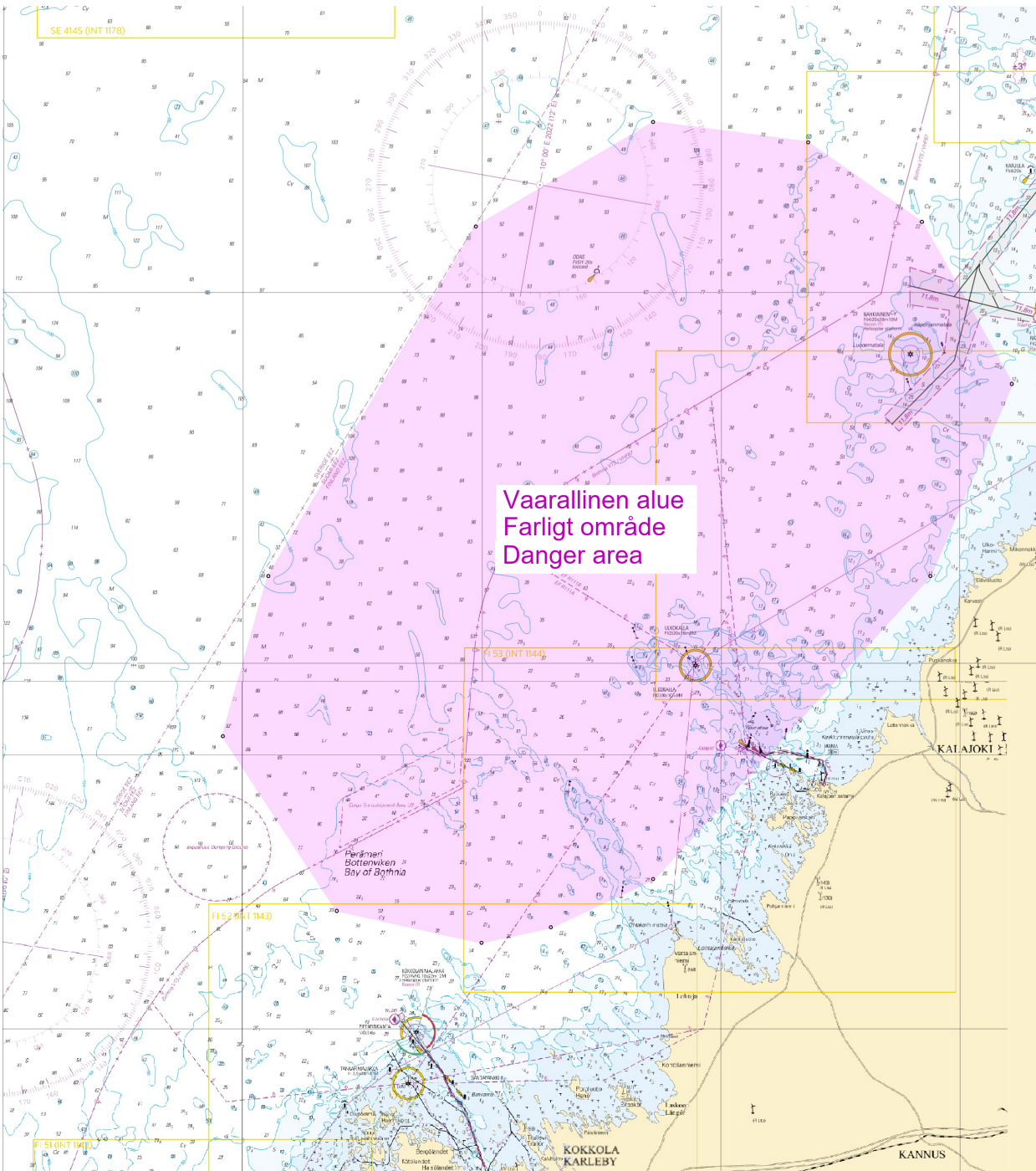


Image for reference, chart extracts not to scale of chart.

(Puolustusvoimat/Försvarsmakten/The Finnish Defence Forces 2024)

*232/2024

2024-10-31

Finland. Bay of Bothnia. Siikajoki. W of Tavonniemi. Depths

Charts

55
56

(INT 1146)
(INT 1147)

Previous

231/2024 [↗](#)
85/2024 [↗](#)

1 Amend 10  11₅ Delete 10m depth area and depth contour

64°50.07'N 24°20.66'E

(Traficom, Helsinki/Helsingfors 2024)

233/2024

2024-10-31

Sweden. Bay of Bothnia. Off Luleå. Sandgrönnfjärden. Channel section opened to vessel traffic. Areas and borders

Charts

958

(INT 1209)

Previous

231/2024 [↗](#)

Cancelled: 174(T)/2024 [↗](#)

1 Delete  958 Between the following positions:

- (1) 65°22.2'N 22°19.8'E
- (2) 65°25.2'N 22°23.2'E

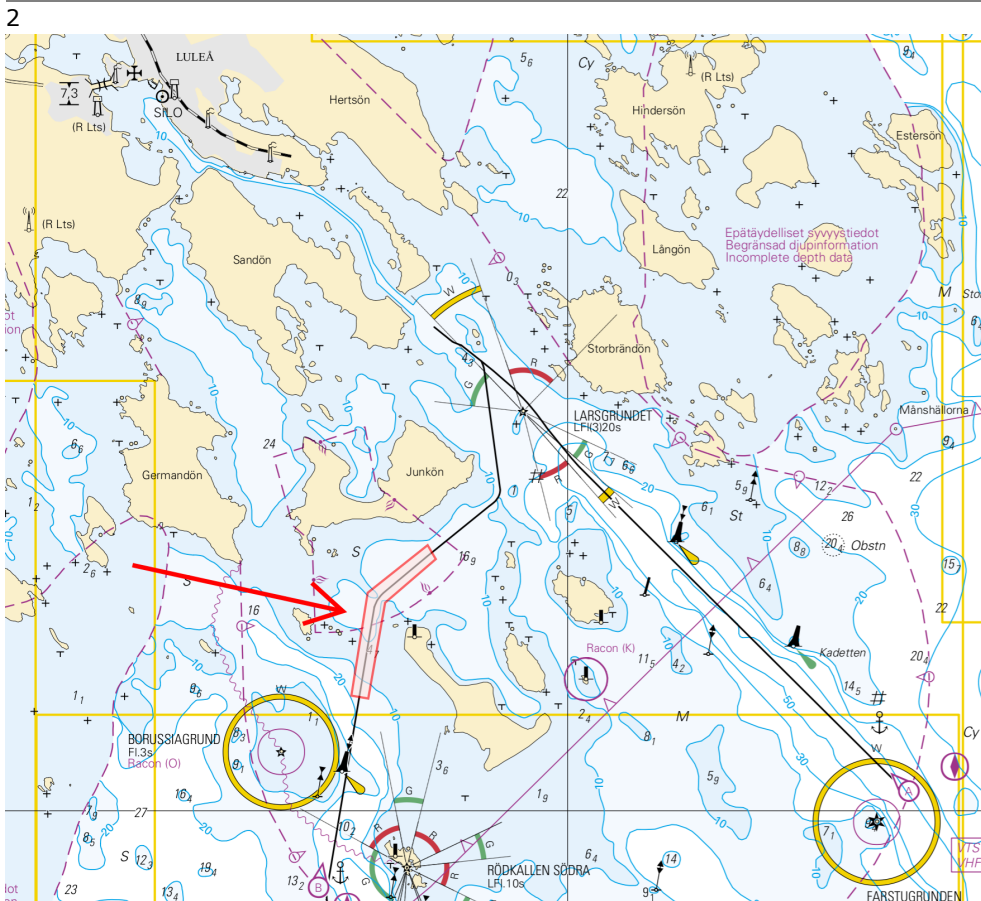


Image for reference, chart extracts not to scale of chart.

*234/2024

2024-10-31

Finland. Bay of Bothnia. Hailuoto. Operations completed. Areas and borders

Charts		Previous
57	(INT 1148)	226/2024 ↗
846		208/2024 ↗
8071/INDEX		231/2024 ↗

References: 145(T)/2024 [↗](#), 163/2024 [↗](#)

Cancelled: 208(T)/2024 [↗](#)

1
Delete | 57, 846, 8071/INDEX
Traffic restrictions 65°02.2'N 25°05.8'E

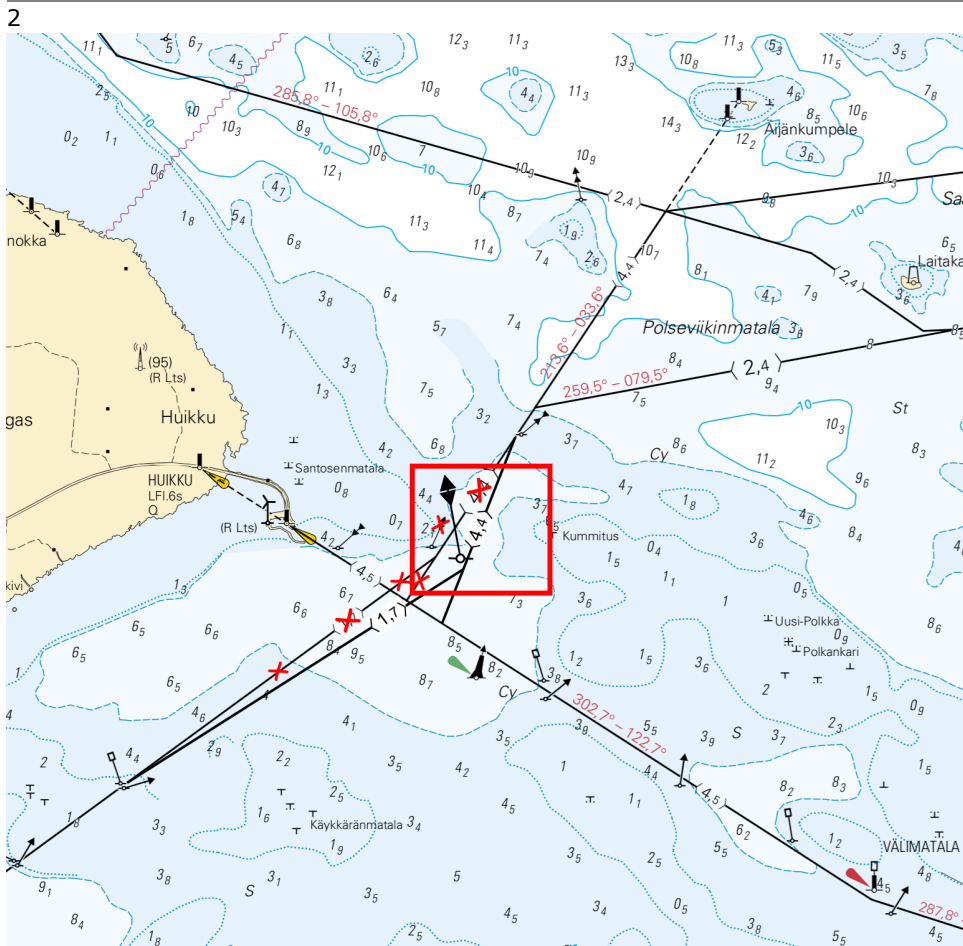


Image for reference, chart extracts not to scale of chart.

(Väylävirasto/Trafikledsverket/Finnish Transport Infrastructure Agency, 2024)

Vuoksi watercourse

*236/2024

2024-10-31

Finland. Vuoksi watercourse. Rantasalmi. Suuri-Pöljä. Obstructions

Charts

M227

V227

Previous

182/2024 [↗](#)

182/2024 [↗](#)

1

M227, V227

Add



62°08.66'N

28°20.95'E

(Traficom, Helsinki/Helsingfors 2024)

Announcements

*229(T)/2024

2024-10-29

Finland. Bay of Bothnia. Kemi. Simo. Ii. Hydrographic surveying in progress. Notice repeated.

[Charts](#)

[Previous](#)

Time: until about 31 November 2024

References: [175\(T\)/2024](#)

Cancelled: [173\(T\)/2024](#)

1

In the sea areas off Kemi, Simo and off Ii, hydrographic surveying in progress in the areas as marked in the chartlets. The surveys are expected to be completed in November 2024. Weather conditions may alter the plans.

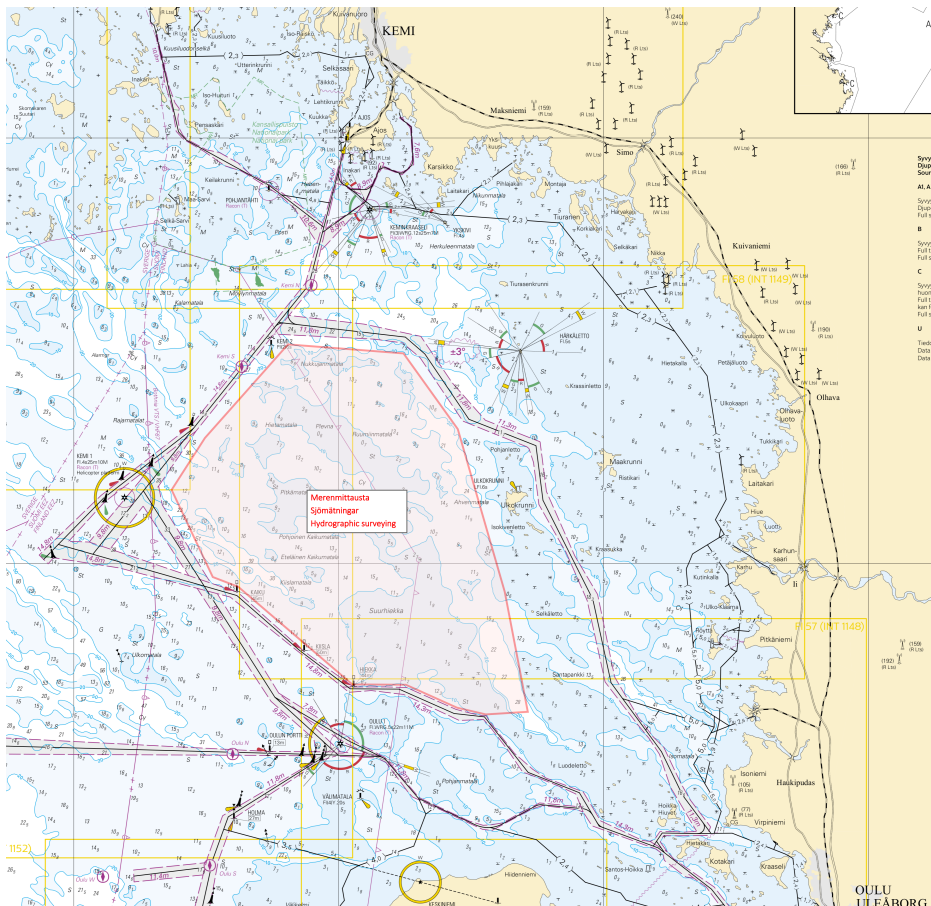
The survey vessel Amber Cecilia SNBF is performing the survey operations. MMSI: 261003050. GSM: 0048661377166.

The vessel is monitoring VHF channel 16 and the other required VHF channels. Vessels are requested to give a wide berth.

Vessels navigating in the area are advised to reduce their speed and avoid creating undue wash in the vicinity of the work sites and the survey vessel. The survey vessel may move in an unexpected manner during the survey operations. Mariners are requested to navigate with caution.

Fishermen are requested to mark their fishing tackles well, especially the fishing nets, so that mutual damage can be avoided.

2



*235/2024

2024-10-31

Finland. Sailing Directions for Finnish waters. Channel descriptions of Main approach channels. Main approach channels 2.3.2 - The Quark and 2.3.3 - Bay of Bothnia.

Charts

Previous

References:176/2024 [🔗](#)

1

Sailing directions for Finnish water 2.3.2 - The Quark and 2.3.3 - Bay of Bothnia (New versions of publications).

The Finnish Transport and Communications Agency Traficom publishes the nautical charts and nautical publications in Finland. Nautical publications contain information to support the nautical charts. Sailing Directions for Finnish waters consists of a General information part (part 1) and descriptions of the main approach channels (Part 2 – Main approach channels). Part 2 is divided into several volumes. Sailing directions for Finnish waters - Part 1, contains general information, guidelines and links to further information. The channel descriptions include depth- and design-data with general notes on usage of the main approach channels. Sailing directions are published as PDF- documents and provided for free download at: <https://fiho.fi/lnk/sd/en>.

Channel descriptions are published together with the N2000 nautical charts. Volumes 2.3.2 and 2.3.3 - Bay of Bothnia, has been published 17 October 2024.

Temporary changes to fairways are not reflected in the Sailing Directions. Mariners should follow the Notices to Mariners and ensure availability of the newest publications including any needed linked material onboard.

<https://www.traficom.fi/en/services/notices-mariners>

(Traficom, Helsinki/Helsingfors 2024)

Current Preliminary (P) and Temporary (T) notices (31.10.2024)

Gulf of Finland

T&P	Charts	Gulf of Finland
174(T)/2019 ↗	951	SE of Bol'soj Tjuters. Obstructions
296(T)/2020 ↗	17, 18, 191, 952, A, B	Helsinki. Sipoo. Areas and borders
20(T)/2021 ↗	951, A	TSS OFF ROOSHER ISLAND. Lighthouse Rodser extinguished. Notice repeated. Buoyage
228(T)/2021 ↗	951, A	Krestovjy. Lighthouse Krestovjy extinguished. Notice repeated. Buoyage
304(T)/2021 ↗	18, 192, A, B	Helsinki. Vuosaari. Notice repeated. Buoyage. Areas and borders
65(T)/2022 ↗	A, S	Vyborg. Destroyed leading beacon. Notice repeated. Buoyage
66(T)/2022 ↗	A, S	Vyborg. Light extinguished. Notice repeated. Buoyage
86(T)/2022 ↗	18, 191, 952, A, B	Helsinki. Kruunuvuori. Restrictions on small craft traffic. Fairways
90(T)/2022 ↗	951	Tiskolovo. Lighthouse Kajbolovo. Buoyage
229(T)/2023 ↗	18, 191, A, B	Helsinki. Hernesaari. Buoyage
230(T)/2023 ↗	18, 191, A, B	Helsinki. Hernesaari. Buoyage. Areas and borders
35(T)/2024 ↗	14, 138, A	Kotka. Lehmäsaari. Destroyed leading light. Buoyage
52(T)/2024 ↗	952, A, B	Prangli. Kelnase. Construction works. Areas and borders
80(T)/2024 ↗	18, 952, A, B	SW of Helsinginmatala. ODAS spar buoy. Buoyage
194(T)/2024 ↗	18, 191, A, B	Helsinki. Sompasaari. Buoyage
216(T)/2024 ↗	952, A, B	Viinsi poolsaar. Maintenance of aids to navigation. Buoyage
230(T)/2024 ↗	18, 191, A, B	Helsinki. Melkki. Light Melkki extinguished. Buoyage

Archipelago Sea

T&P	Charts	Archipelago Sea
189(T)/2023 ↗	26, D	Pargas. Kirjala...Restrictions on traffic. Areas and borders
40(T)/2024 ↗	26, 190, D	Naantali. Raumakari. Särkänalmi. Kirkonsalmi. Notice repeated. Buoyage
74(T)/2024 ↗	27, 167, D	Pargas. S of Utö. ODAS buoy. Buoyage
130(T)/2024 ↗	27, D	Pargas. S of Utö. ODAS buoy. Buoyage
168(T)/2024 ↗	25, 26, 37, D	Pargas. Seili. ODAS buoy. Buoyage

Aland Sea

T&P	Charts	Aland Sea
97(T)/2024 ↗	32, 160, C	Mariehamn. Lemströms canal...Restrictions on traffic. Areas and borders
155(T)/2024 ↗	31, 935, C	TSS SOUTH ÅLAND SEA. Light Flötjan extinguished. Buoyage

Bothnian Sea

T&P	Charts	Bothnian Sea
30(T)/2022 ↗	41, 127, E	Rauma. Ulko-Petäjäs. Areas and borders
160(T)/2022 ↗	41, 127, E	Rauma. Otanlahti. Flytande ö. Obstructions
128(T)/2023 ↗	953, 954, 955, C	Saltvik. Brändö. Measuring equipment on seabed. Buoyage
8(T)/2024 ↗	42, 125, E	Pori. Tahkoluoto. Notice repeated. Buoyage
95(T)/2024 ↗	42, 125, 955, E	Pori. Tahkoluoto. Lighthouse Kaijakari extinguished. Buoyage
121(T)/2024 ↗	45, 46, 815, 816	Korsnäs. Measuring equipment on seabed. Obstructions

The Quark

T&P	Charts	The Quark
238(T)/2022 ↗	48, 115, 921, F, M	Vaasa. Vaskiluoto. Notice repeated. Buoyage
126(T)/2023 ↗	48, 115, 820	Vaasa. Vaskiluoto. Dredging operations. Areas and borders
142(T)/2023 ↗	48, 115, 820, 956, 957, 8061, 8065	Vaasa. Vaskiluoto. Notice repeated. Buoyage. Fairways. Fairway areas
255(T)/2023 ↗	48, 115, 820	Vaasa. Vaskiluoto. Notice repeated. Buoyage
256(T)/2023 ↗	48, 115, 820	Vaasa. Vaskiluoto. Dredging operations. Notice repeated. Areas and borders
266(T)/2023 ↗	47, 825, 956, 957, 8065	TSS in Norra Kvarken. Buoys temporarily withdrawn for the winter. Buoyage
62(T)/2024 ↗	48, 819, 822, 956, 957, 8061, 8065	Korsholm. W of Replot. Lighthouse Vaasan Majakka extinguished. Buoyage

Bay of Bothnia

T&P	Charts	Bay of Bothnia
263(T)/2023 ↗	55, 119, 838, 839, 958, 8071	Raahe. Light Heikinkari extinguished. Buoyage
144(T)/2024 ↗	57, 846	Oulu. Pajuniemi. Buoyage
145(T)/2024 ↗	57, 846, 958, 8071	Hailuoto. Bridge construction work. Areas and borders
164(T)/2024 ↗	57, 119, 846	Oulu. Pikisaari. Fairways
175(T)/2024 ↗	60	Kemi. NE of Lighthouse Kemi 1. Construction works. Areas and borders
197(T)/2024 ↗	57, 119, 845, 846	Oulu. Port of Oulu. Dredging operations. Areas and borders
231(T)/2024 ↗	52, 53, 54, 55, 117, 835, 836, 837, 838, 839, 957, 958, 8061, 8071	Kokkola. Lohtaja. Firing exercise. Areas and borders

Vuoksi watercourse

T&P	Charts	Vuoksi watercourse
268(T)/2019 ↗	M	Kuopio. Kotkatniemi. Buoyage
214(T)/2020 ↗		Leppävirta. Hyvärilä. Buoyage
90(T)/2023 ↗	921, M	Kuopio. Light Sotkanselkä operational. Notice repeated. Buoyage

Kymijoki watercourse

T&P	Charts	Kymijoki watercourse
-	-	

Kokemäijoki watercourse

T&P	Charts	Kokemäijoki watercourse
-	-	

Oulujoki watercourse

T&P	Charts	Oulujoki watercourse
-	-	

Paatsjoki watercourse

T&P	Charts	Paatsjoki watercourse
-	-	

Saimaa Canal

T&P	Charts	Saimaa Canal
-	-	

Northern Baltic

T&P	Charts	Northern Baltic
11(T)/2024 ↗	952, 953, 954	Hiiumaa. Tahkuna. Light Lehtma extinguished. Buoyage

Announcements

T&P	Charts	Announcements
291(T)/2022 ↗		Bay of Bothnia. Off Oulu. V-AIS. Notice repeated.
137(T)/2023 ↗		Helsinki. Korkeasaari...Restrictions on small craft traffic
102(T)/2024 ↗		Pargas. Hessund. Bridge construction work.
212(P)/2024 ↗		Chart to be withdrawn.
229(T)/2024 ↗		Kemi. Simo. Ii. Hydrographic surveying in progress. Notice repeated.