



# Notices to Mariners

## NtM 35/2024

Notices: 274 - 286 / 20.12.2024



# Table of Contents

<b>Title</b>	<b>Page</b>
Index by Area	2
Index by Chart	3
Gulf of Finland	4
Archipelago Sea	8
The Quark	9
Bay of Bothnia	13
Announcements	14
Current Preliminary (P) and Temporary (T) notices (21.12.2024)	16

# Index by Area

## **Gulf of Finland**

### **Charts**

*274/2024	21, B
275/2024	952, A, B
276/2024	951
*281/2024	18, 192, A, B
*283/2024	17, 103, A
*284(T)/2024	18, 191, A, B

## **Archipelago Sea**

### **Charts**

*285/2024	26, 190, D
-----------	------------

## **The Quark**

### **Charts**

*278/2024	48, 115, 819
*279(T)/2024	48, 115, 820, 957, 8061, 8065
*280/2024	46, 816

## **Bay of Bothnia**

### **Charts**

*277/2024	52, 833, 834
-----------	--------------

## **Announcements**

### **Charts**

*282/2024
*286/2024

# Index by Chart

<b>Charts</b>	<b>Notices</b>
17	*283/2024
18	*281/2024, *284(T)/2024
21	*274/2024
26	*285/2024
46	*280/2024
48	*278/2024, *279(T)/2024
52	*277/2024
103	*283/2024
115	*278/2024, *279(T)/2024
190	*285/2024
191	*284(T)/2024
192	*281/2024
816	*280/2024
819	*278/2024
820	*279(T)/2024
833	*277/2024
834	*277/2024
951	276/2024
952	275/2024
957	*279(T)/2024
8061	*279(T)/2024
8065	*279(T)/2024
A	275/2024, *281/2024, *283/2024, *284(T)/2024
B	*274/2024, 275/2024, *281/2024, *284(T)/2024
D	*285/2024

# Gulf of Finland

\*274/2024

2024-12-11

Finland. Gulf of Finland. Raseborg. Ekenäs. Buoyage

### Charts

21, 21.B



(INT 1253)

### Previous

166/2024 [↗](#)

B634, B634.2

259/2024 [↗](#)

1		21, 21.B, B634, B634.2			
Amend			59°58.256'N	23°24.272'E	11921
2		21, 21.B, B634, B634.2			
Amend			59°58.582'N	23°24.991'E	11913

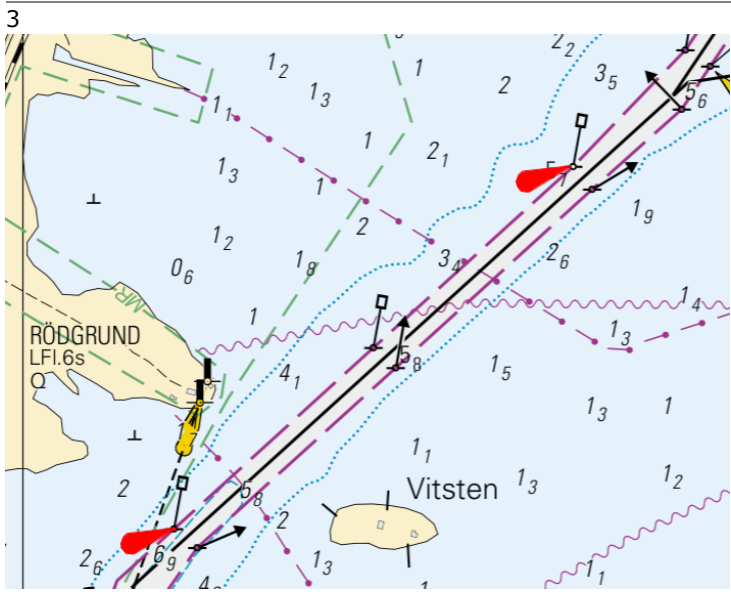


Image for reference, chart extracts not to scale of chart.

(Traficom, Helsinki/Helsingfors 2024)


275/2024

2024-12-11

Estonia. Gulf of Finland. NE of Paldiski. New pilot boarding place. Pilotage

Charts	Previous
952	272/2024 <a href="#">↗</a>
A/Helsinki - Tallinna	259/2024 <a href="#">↗</a>
B/Hanko - Haapsalu, B/Helsinki - Tallinn	274/2024 <a href="#">↗</a>

---

1		952, A/Helsinki - Tallinna, B/Hanko - Haapsalu, B/Helsinki - Tallinn		
Add			59°26.0'N	24°05.0'E

(NtM 11/166, Tallinn 2024)

---

---

276/2024

2024-12-11

Estonia. Gulf of Finland. Narva Bay. Withdrawn pilot boarding places.  
Pilotage

Charts	Previous
951	272/2024 <a href="#">↗</a>

---

1		951		
Delete			59°29'N	27°45'E

---

2		951		
Delete			59°27'N	27°55'E

(NtM 11/171, Tallinn 2024)

---

---

\*281/2024

2024-12-13



Finland. Gulf of Finland. Sipoo. Kuiva-Hevonen. Channel to Vuosaari.  
Correction. Buoyage

Charts		Previous
18	(INT 1250)	259/2024 <a href="#">↗</a>
192	(INT 1160)	259/2024 <a href="#">↗</a>
A625		275/2024 <a href="#">↗</a>
B625		275/2024 <a href="#">↗</a>



References: [259/2024 ↗](#)

1 18, 191, 192, 952, A/INDEX, A625, A/Helsinki - Tallinna, B/INDEX, B625, B/Helsinki - Tallinn  
 Notice NtM TM 33/259/2024 items 5 and 6 were incorrect. Corrections below:

2 18, 192, A625, B625

Amend  →  60°09.572'N 25°12.208'E 87942

3 18, 192, A625, B625

Amend  →  60°09.140'N 25°12.121'E 87940

(Traficom, Helsinki/Helsingfors 2024)

\*283/2024

2024-12-17

Finland. Gulf of Finland. Porvoo. Sköldvik channel. Buoyage

Charts		Previous
17	(INT 1249)	238/2024 <a href="#">↗</a>
103.C	(INT 12491)	217/2024 <a href="#">↗</a>
A621, A622, A622.1, A623, A624		281/2024 <a href="#">↗</a>

1 17, A621, A624

Amend  →  60°05.475'N 25°37.109'E

2 17, A621

Amend  →  60°08.780'N 25°39.069'E

3 17, A621

Amend  →  60°09.412'N 25°39.896'E

4 17, A621

Amend  →  60°10.546'N 25°38.938'E

Amend



60°16.429'N

25°33.555'E

(Traficom, Helsinki/Helsingfors 2024)

# \*284(T)/2024

2024-12-18

Finland. Gulf of Finland. Helsinki. Hakaniemi. Bridge construction work.  
Areas and borders

Charts		Previous
18	(INT 1250)	281/2024 <a href="#">↗</a>
191	(INT 1159)	230/2024 <a href="#">↗</a>
A626		283/2024 <a href="#">↗</a>
B626		281/2024 <a href="#">↗</a>

Time: until about 28 February 2025

1 18, 191, A626, B626

Construction work underway on the Hakaniemi bridge. The adjacent waters of the bridge will be temporarily closed to vessel traffic.

2 18, 191, A626, B626

Add



Sea area closed to vessel traffic

- (1) 60°10.664'N 24°57.415'E
- (2) 60°10.665'N 24°57.464'E
- (3) 60°10.619'N 24°57.470'E
- (4) 60°10.618'N 24°57.419'E

(Traficom, Helsinki/Helsingfors 2024)

# Archipelago Sea


\*285/2024

2024-12-18

Finland. Archipelago Sea. Turku. Pansio. Buoyage

Charts		Previous
26	(INT 1189)	267/2024 <a href="#">↗</a>
190	(INT 1158)	267/2024 <a href="#">↗</a>
D706, D706.1, D706.2		267/2024 <a href="#">↗</a>

---

1	26, 190, D706, D706.1, D706.2	60°26.350'N	22°07.500'E	81131
Delete				

(Traficom, Helsinki/Helsingfors 2024)

---

---

# The Quark

\*278/2024

2024-12-11

Finland. The Quark. Storskäret. Depths

## Charts

48	(INT 1139)	269/2024 <a href="#">↗</a>
115.A	(INT 11391)	262/2024 <a href="#">↗</a>
819, 819.A		62/2024 <a href="#">↗</a>

## Previous

References: [244/2023](#) [↗](#)

1 48, 115.A, 819, 819.A

Amend



63°06.66'N

20°49.01'E

(Traficom, Helsinki/Helsingfors [↗](#) **Obstn** 2024)

\*279(T)/2024

2024-12-12

Finland. The Quark. Vaasa. Vaskiluoto. Buoyage. Fairway areas

## Charts

48	(INT 1139)	278/2024 <a href="#">↗</a>
115.C	(INT 11391)	278/2024 <a href="#">↗</a>
820, 820.B		262/2024 <a href="#">↗</a>
957	(INT 1208)	269/2024 <a href="#">↗</a>
8061/INDEX		231/2024 <a href="#">↗</a>
8065/Vaasa - Uumaja		263/2024 <a href="#">↗</a>

## Previous

Time: to approx. 9 December 2025

References: [238\(T\)/2022](#) [↗](#), [143/2023](#) [↗](#), [256\(T\)/2023](#) [↗](#), [219/2024](#) [↗](#), [262\(T\)/2024](#) [↗](#)

Cancelled: [142\(T\)/2023](#) [↗](#), [255\(T\)/2023](#) [↗](#)

1 Part of notices of NtM TM 31/238(T)/2022, 19/142/2023 and 34/255(T)/2023 repeated.

2 48, 115.C, 820, 820.B

Amend



63°05.283'N

21°32.706'E

86736

3 48, 115.C, 820, 820.B

Add



63°05.194'N

21°32.275'E

86733

4	Add 	48, 115.C, 820, 820.B	63°05.214'N	21°32.481'E	86734
5	Add 	48, 115.C, 820, 820.B	63°05.258'N	21°32.640'E	86735
6	Add  V-AIS	48, 115.C, 820, 820.B	63°05.126'N	21°32.666'E	86731
7	Add  V-AIS	48, 115.C, 820, 820.B	63°05.107'N	21°32.896'E	86444
8	Add  V-AIS	48, 115.C, 820, 820.B	63°05.079'N	21°33.088'E	86442
9	Add  V-AIS	48, 115.C, 820, 820.B	63°04.991'N	21°33.485'E	86441
10	Add  V-AIS	48, 115.C, 820, 820.B	63°05.013'N	21°33.559'E	87021
11	Add  V-AIS	48, 115.C, 820, 820.B	63°04.966'N	21°33.633'E	86728
12	Add 	48, 115.C, 820, 820.B	63°04.964'N	21°33.788'E	86729

Add 9,7m

(1)	63°05.205'N	21°32.088'E
(2)	63°05.162'N	21°32.053'E
(3)	63°05.137'N	21°32.344'E
(4)	63°05.126'N	21°32.666'E
(5)	63°05.107'N	21°32.896'E
(6)	63°05.079'N	21°33.088'E
(7)	63°05.120'N	21°33.092'E
(8)	63°05.205'N	21°33.076'E
(9)	63°05.283'N	21°32.706'E
(10)	63°05.259'N	21°32.640'E
(11)	63°05.214'N	21°32.481'E
(12)	63°05.194'N	21°32.275'E
(13)	63°05.205'N	21°32.088'E

14

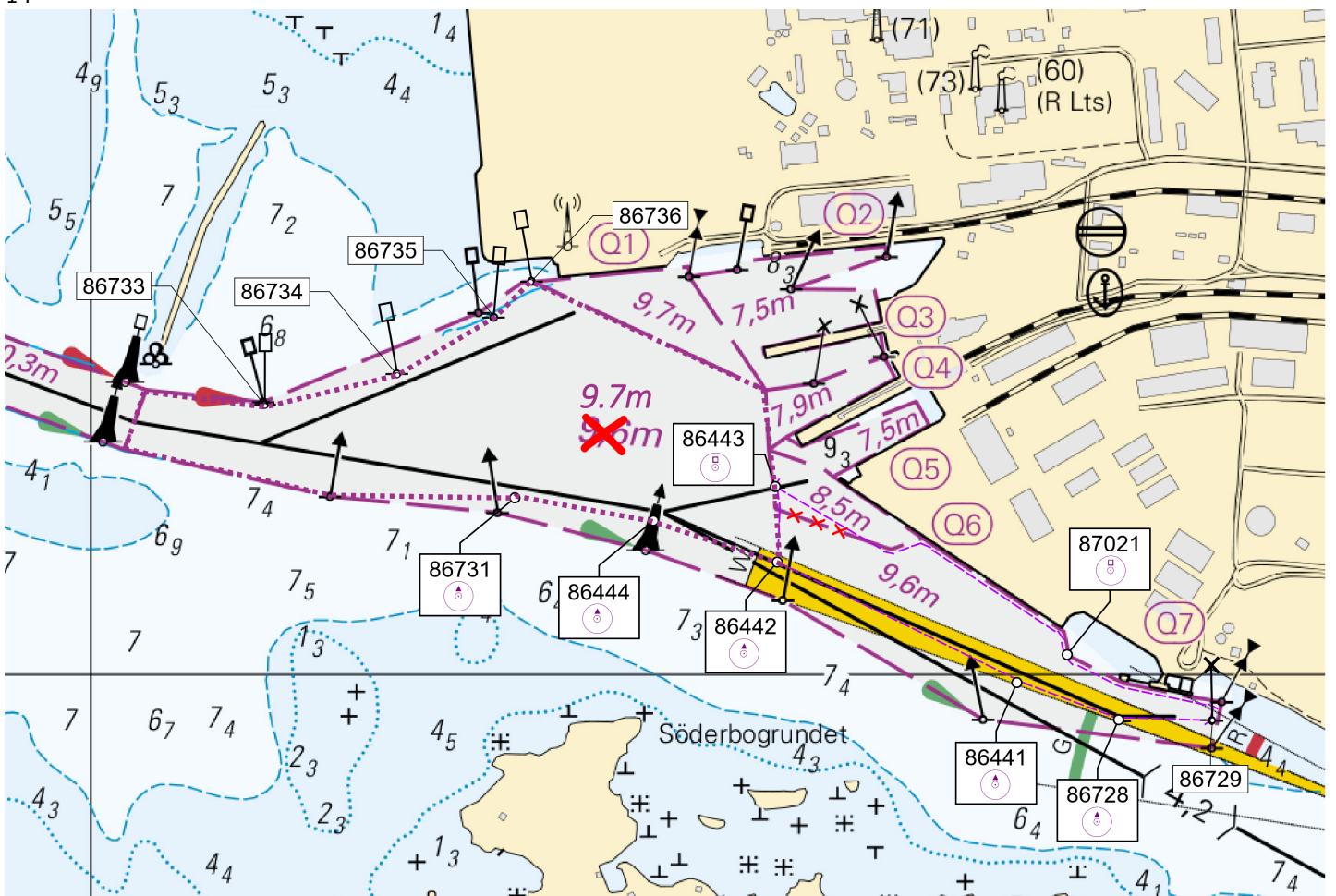


Image for reference, chart extracts not to scale of chart.

(Traficom, Helsinki/Helsingfors 2024)

\*280/2024

2024-12-12

Finland. The Quark. Korsnäs. Molpe. Depths

Charts

46

(INT 1137)

Previous

121/2024 [↗](#)

816, 816.B

121/2024 [↗](#)

1		46, 816, 816.B		
Delete	4		62°52.962'N	21°05.472'E
2		816.B		
Delete	5 <sub>2</sub>		62°53.013'N	21°05.728'E
3		46, 816, 816.B		
Delete	3 <sub>g</sub>		62°53.095'N	21°05.895'E
4		46, 816, 816.B		
Delete	2 <sub>1</sub>		62°53.211'N	21°06.255'E
5		46, 816, 816.B		
Add	T		62°52.945'N	21°05.455'E
6		46, 816, 816.B		
Add	T		62°53.016'N	21°05.555'E
7		46, 816, 816.B		
Add	T		62°53.213'N	21°06.281'E
8		46, 816, 816.B		
Add	T		62°53.154'N	21°06.085'E

(Traficom, Helsinki/Helsingfors 2024)

# Bay of Bothnia

\*277/2024

2024-12-11

Finland. Bay of Bothnia. Kokkola. Kallskärsreveln. Depths

## Charts

52

(INT 1143)

833

834

## Previous

231/2024 [↗](#)

221/2024 [↗](#)

160/2024 [↗](#)

References:160/2024 [↗](#)

1

Amend



52, 833, 834

63°55.699'N

22°50.454'E

(Traficom, Helsinki/Helsingfors 2024)

---

---

# Announcements

\*282/2024

2024-12-17

Finland. Global navigation satellite systems disturbance.

[Charts](#)

[Previous](#)

References: 127/2024 [↗](#)

---

1

GNSS interference in waterborne transport

GNSS interference in the Gulf of Finland began at the end of April, and signal disruptions are still observed in waterborne transport. Reports of interference have been particularly frequent in the eastern parts of the Gulf of Finland.

Interference affects the reliability of positioning by disrupting GNSS reception. When interference occurs, mariners cannot fully trust widely used GNSS-based navigation systems but have to rely on back-up systems instead.

If interference remains undetected, the risks caused by positioning errors increase, particularly in the narrow channels in the archipelago and in poor visibility. Interference is easier to detect when radar and electronic navigational charts are used simultaneously with radar image overlaid on the chart. The skills and professional competence of the crew are highlighted in the event of GNSS issues. If GNSS positioning data is lost, nautical charts, compasses and radars can still be used for navigation.

Fintraffic Vessel Traffic Services (VTS) have updated their instructions on how to operate in the event of GNSS interference. The VTS centre supports ships and gives ships arriving in the VTS area all the information they need for safe navigation, including information about any GNSS issues.

The Finnish Transport and Communications Agency Traficom's website includes a situational picture of interference in satellite navigation services in Finland.

<https://tieto.traficom.fi/en/statistics/satellite-navigation-service-interference-finland>

Any radio interference observed at sea should always be reported to Traficom:

<https://traficom.fi/en/notifications-radio-interference>

(Traficom, Helsinki/Helsingfors 2024)

---

---

\*286/2024

2024-12-20

Finland. Aland Sea. Withdrawn chart product.

**Charts**

**Previous**

Cancelled: 212(P)/2024 [↗](#)

---

1

Sjökort 935 Eteläinen Ahvenanmeri has been withdrawn on 20 December 2024 and is no longer maintained. Mariners are advised to use chart 953 Saaristomeri (1:250000) or the Swedish chart SE 619 (INT 1240) Sea of Åland (1:150000) instead.

(Traficom, Helsinki/Helsingfors 2024)

---

---

# Current Preliminary (P) and Temporary (T) notices (21.12.2024)

## Gulf of Finland

<b>T&amp;P</b>	<b>Charts</b>	<b>Gulf of Finland</b>
174(T)/2019 <a href="#">↗</a>	951	SE of Bol'soj Tjuters. Obstructions
296(T)/2020 <a href="#">↗</a>	17, 18, 191, 952, A, B	Helsinki. Sipoo. Areas and borders
20(T)/2021 <a href="#">↗</a>	951, A	TSS OFF ROOSHER ISLAND. Lighthouse Rodser extinguished. Notice repeated. Buoyage
228(T)/2021 <a href="#">↗</a>	951, A	Krestovyy. Lighthouse Krestovyy extinguished. Notice repeated. Buoyage
304(T)/2021 <a href="#">↗</a>	18, 192, A, B	Helsinki. Vuosaari. Notice repeated. Buoyage. Areas and borders
65(T)/2022 <a href="#">↗</a>	A, S	Vyborg. Destroyed leading beacon. Notice repeated. Buoyage
66(T)/2022 <a href="#">↗</a>	A, S	Vyborg. Light extinguished. Notice repeated. Buoyage
86(T)/2022 <a href="#">↗</a>	18, 191, 952, A, B	Helsinki. Kruunuvuori. Restrictions on small craft traffic. Fairways
90(T)/2022 <a href="#">↗</a>	951	Tiskolovo. Lighthouse Kajbolovo. Buoyage
229(T)/2023 <a href="#">↗</a>	18, 191, A, B	Helsinki. Hernesaari. Buoyage
230(T)/2023 <a href="#">↗</a>	18, 191, A, B	Helsinki. Hernesaari. Buoyage. Areas and borders
35(T)/2024 <a href="#">↗</a>	14, 138, A	Kotka. Lehmäsaari. Destroyed leading light. Buoyage
52(T)/2024 <a href="#">↗</a>	952, A, B	Prangli. Kelnase. Construction works. Areas and borders
80(T)/2024 <a href="#">↗</a>	18, 952, A, B	SW of Helsinginmatala. ODAS spar buoy. Buoyage
194(T)/2024 <a href="#">↗</a>	18, 191, A, B	Helsinki. Sompasaari. Buoyage
216(T)/2024 <a href="#">↗</a>	952, A, B	Viinsi poolsaar. Maintenance of aids to navigation. Buoyage
230(T)/2024 <a href="#">↗</a>	18, 191, A, B	Helsinki. Melkki. Light Melkki extinguished. Buoyage
238(T)/2024 <a href="#">↗</a>	17, 952, A	Off Porvoo. Lighthouse Porvoon majakka unlit. Buoyage
284(T)/2024 <a href="#">↗</a>	18, 191, A, B	Helsinki. Hakaniemi. Bridge construction work. Areas and borders

## Archipelago Sea

T&P	Charts	Archipelago Sea
189(T)/2023 <a href="#">↗</a>	26, D	Pargas. Kirjala...Restrictions on traffic. Areas and borders
40(T)/2024 <a href="#">↗</a>	26, 190, D	Naantali. Raumakari. Särkäsalmi. Kirkonsalmi. Notice repeated. Buoyage
74(T)/2024 <a href="#">↗</a>	27, 167, D	Pargas. S of Utö. ODAS buoy. Buoyage
130(T)/2024 <a href="#">↗</a>	27, D	Pargas. S of Utö. ODAS buoy. Buoyage
168(T)/2024 <a href="#">↗</a>	25, 26, 37, D	Pargas. Seili. ODAS buoy. Buoyage
239(T)/2024 <a href="#">↗</a>	27, 167, D	S of Utö. Söderdjupet. Measuring equipment on seabed. Areas and borders
250(T)/2024 <a href="#">↗</a>	26, D	Pargas. Hessund...Restrictions on traffic. Areas and borders
267(T)/2024 <a href="#">↗</a>	26, 190, D	Port of Turku. Construction works. Areas and borders

## Aland Sea

T&P	Charts	Aland Sea
97(T)/2024 <a href="#">↗</a>	32, 160, C	Mariehamn. Lemströms canal...Restrictions on traffic. Areas and borders
155(T)/2024 <a href="#">↗</a>	31, 935, C	TSS SOUTH ÅLAND SEA. Light Flötjan extinguished. Buoyage

## Bothnian Sea

T&P	Charts	Bothnian Sea
30(T)/2022 <a href="#">↗</a>	41, 127, E	Rauma. Ulko-Petäjäs. Areas and borders
160(T)/2022 <a href="#">↗</a>	41, 127, E	Rauma. Otanlahti. Flytande ö. Obstructions
8(T)/2024 <a href="#">↗</a>	42, 125, E	Pori. Tahkoluoto. Notice repeated. Buoyage
95(T)/2024 <a href="#">↗</a>	42, 125, 955, E	Pori. Tahkoluoto. Lighthouse Kaijakari extinguished. Buoyage
121(T)/2024 <a href="#">↗</a>	45, 46, 815, 816	Korsnäs. Measuring equipment on seabed. Obstructions

## The Quark

<b>T&amp;P</b>	<b>Charts</b>	<b>The Quark</b>
238(T)/2022 <a href="#">↗</a>	48, 115, 921, F, M	Vaasa. Vaskiluoto. Notice repeated. Buoyage
126(T)/2023 <a href="#">↗</a>	48, 115, 820	Vaasa. Vaskiluoto. Dredging operations. Areas and borders
256(T)/2023 <a href="#">↗</a>	48, 115, 820	Vaasa. Vaskiluoto. Dredging operations. Notice repeated. Areas and borders
62(T)/2024 <a href="#">↗</a>	48, 819, 822, 956, 957, 8061, 8065	Korsholm. W of Replot. Lighthouse Vaasan Majakka extinguished. Buoyage
247(T)/2024 <a href="#">↗</a>	48, 820, 956, 957	Vaasa. Johansson. Buoyage
262(T)/2024 <a href="#">↗</a>	48, 115, 820	Vaasa. Vaskiluoto. ( N2000 ) (BSCD2000). Buoyage. Fairway areas
279(T)/2024 <a href="#">↗</a>	48, 115, 820, 957, 8061, 8065	Vaasa. Vaskiluoto. Buoyage. Fairway areas

## Bay of Bothnia

<b>T&amp;P</b>	<b>Charts</b>	<b>Bay of Bothnia</b>
263(T)/2023 <a href="#">↗</a>	55, 119, 838, 839, 958, 8071	Raahe. Light Heikinkari extinguished. Buoyage
144(T)/2024 <a href="#">↗</a>	57, 846	Oulu. Pajuniemi. Buoyage
145(T)/2024 <a href="#">↗</a>	57, 846, 958, 8071	Hailuoto. Bridge construction work. Areas and borders
164(T)/2024 <a href="#">↗</a>	57, 119, 846	Oulu. Pikisaari. Fairways
175(T)/2024 <a href="#">↗</a>	60	Kemi. NE of Lighthouse Kemi 1. Construction works. Areas and borders
197(T)/2024 <a href="#">↗</a>	57, 119, 845, 846	Oulu. Port of Oulu. Dredging operations. Areas and borders
270(T)/2024 <a href="#">↗</a>	57, 846	Hailuoto. Channel section closed for the winter season. Areas and borders

## Vuoksi watercourse

<b>T&amp;P</b>	<b>Charts</b>	<b>Vuoksi watercourse</b>
268(T)/2019 <a href="#">↗</a>	M	Kuopio. Kotkatniemi. Buoyage
214(T)/2020 <a href="#">↗</a>		Leppävirta. Hyvärilä. Buoyage
90(T)/2023 <a href="#">↗</a>	921, M	Kuopio. Light Sotkanselkä operational. Notice repeated. Buoyage

## Kymijoki watercourse

T&P	Charts	Kymijoki watercourse
-	-	

## Kokemäijoki watercourse

T&P	Charts	Kokemäijoki watercourse
-	-	

## Oulujoki watercourse

T&P	Charts	Oulujoki watercourse
-	-	

## Paatsjoki watercourse

T&P	Charts	Paatsjoki watercourse
-	-	

## Saimaa Canal

T&P	Charts	Saimaa Canal
254(T)/2024 <a href="#">↗</a>		Saimaa Canal closed for the winter season.

## Northern Baltic

T&P	Charts	Northern Baltic
11(T)/2024 <a href="#">↗</a>	952, 953, 954	Hiumaa. Tahkuna. Light Lehtma extinguished. Buoyage

# Announcements

T&P	Charts	Announcements
291(T)/2022 <a href="#">↗</a>		Bay of Bothnia. Off Oulu. V-AIS. Notice repeated.
137(T)/2023 <a href="#">↗</a>		Helsinki. Korkeasaari...Restrictions on small craft traffic
102(T)/2024 <a href="#">↗</a>		Pargas. Hessund. Bridge construction work.