



# Notices to Mariners

## NtM 5/2024

Notices: 35 - 44 / 20.02.2024



# Table of Contents

<b>Title</b>	<b>Page</b>
Index by Area	2
Index by Chart	3
Gulf of Finland	4
Archipelago Sea	7
Bothnian Sea	9
Bay of Bothnia	10
Announcements	11
Current Preliminary (P) and Temporary (T) notices (20.02.2024)	12

# Index by Area

## **Gulf of Finland**

## **Charts**

*35(T)/2024	14, 138, A
*36/2024	18, 191
*37/2024	18, 191, A, B
*38(T)/2024	13, 14, 101, 951, A

## **Archipelago Sea**

## **Charts**

*39/2024	27, 167, D
*40(T)/2024	26, 190, D

## **Bothnian Sea**

## **Charts**

*41/2024	40, 954, 955
*42/2024	44, 813, 956, E

## **Bay of Bothnia**

## **Charts**

*43/2024	57, 847
----------	---------

## **Announcements**

## **Charts**

*44/2024
----------

# Index by Chart

Charts	Notices
13	*38(T)/2024
14	*35(T)/2024, *38(T)/2024
18	*36/2024, *37/2024
26	*40(T)/2024
27	*39/2024
40	*41/2024
44	*42/2024
57	*43/2024
101	*38(T)/2024
138	*35(T)/2024
167	*39/2024
190	*40(T)/2024
191	*36/2024, *37/2024
813	*42/2024
847	*43/2024
951	*38(T)/2024
954	*41/2024
955	*41/2024
956	*42/2024
A	*35(T)/2024, *37/2024, *38(T)/2024
B	*37/2024
D	*39/2024, *40(T)/2024
E	*42/2024

# Gulf of Finland

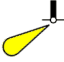
\*35(T)/2024

2024-02-14

Finland. Gulf of Finland. Kotka. Lehmäsaari. Destroyed leading light.  
Buoyage

Charts		Previous
14	(INT 1246)	3/2024 <a href="#">↗</a>
138	(INT 1155)	246/2023 <a href="#">↗</a>
A610, A610.1, A611		31/2024 <a href="#">↗</a>

Time: Until further notice

1	14, 138, A610, A610.1, A611				
Amend	Destroyed				
					
LEHMÄ LFI.W.6s (dest)		60°25.06'N	26°59.09'E	129, (C5356.1)	

2	14, 138, A610, A610.1, A611				
Delete	Leading line between the following positions:	(1)	60°25.06'N	26°59.09'E	
		(2)	60°23.96'N	26°52.52'E	

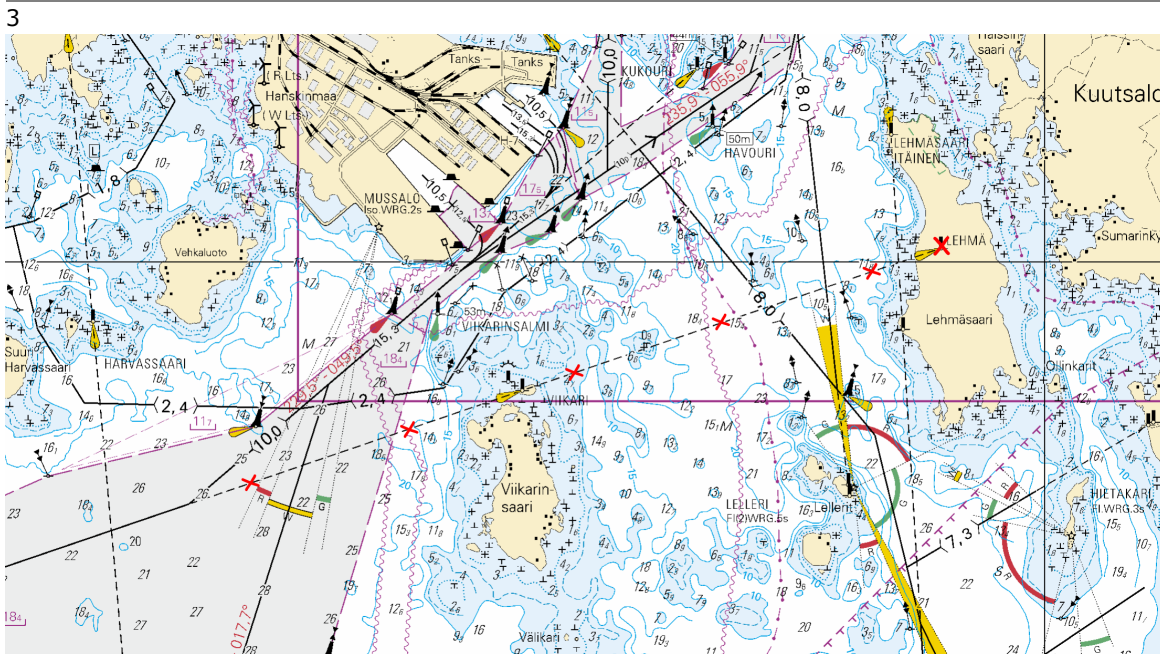


Image for reference, chart extracts not to scale of chart.

(Traficom, Helsinki/Helsingfors 2024)

\*36/2024

2024-02-20

Finland. Gulf of Finland. Helsinki. Eteläsatama. Olympia Quay. Ports

**Charts**

**Previous**

18	(INT 1250)	25/2024 <a href="#">↗</a>
191	(INT 1159)	25/2024 <a href="#">↗</a>

1	18, 191	Pontoon (INT F16)	60°09.786'N	24°57.440'E
---	---------	-------------------	-------------	-------------

(Traficom, Helsinki/Helsingfors 2024)

\*37/2024

2024-02-20

Finland. Gulf of Finland. Helsinki. Sompasaari. Underwater technical works. Operations completed. Areas and borders

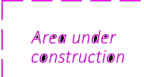
**Charts**

**Previous**

18	(INT 1250)	36/2024 <a href="#">↗</a>
191	(INT 1159)	36/2024 <a href="#">↗</a>
A626		35/2024 <a href="#">↗</a>
B626		25/2024 <a href="#">↗</a>

Cancelled: 266(T)/2022 [↗](#)

1	18, 191, A626, B626
---	---------------------

Delete 	Between the following positions:	(1)	60°10.81'N	24°58.36'E
		(2)	60°10.80'N	24°58.28'E
		(3)	60°10.71'N	24°58.13'E
		(4)	60°10.67'N	24°58.14'E
		(5)	60°10.63'N	24°58.27'E
		(6)	60°10.64'N	24°58.33'E

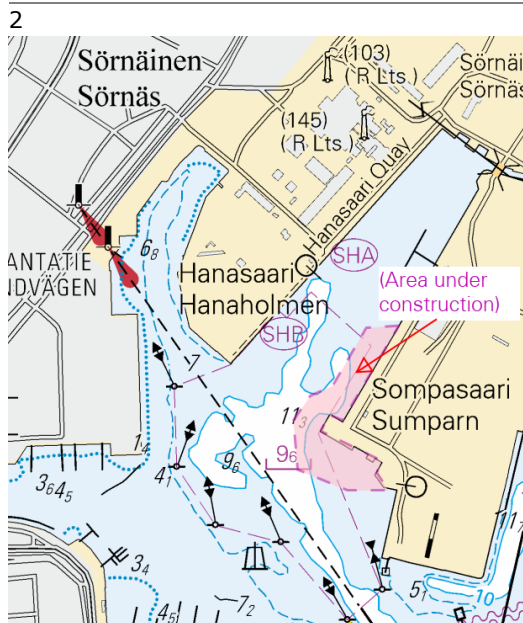


Image for reference, chart extracts not to scale of chart.

\*38(T)/2024

2024-02-20

Finland. Gulf of Finland. Virolahti. Kuorsalo. Channel closed for the winter season. Fairways

Charts		Previous
13	(INT 1245)	3/2024 <a href="#">↗</a>
14	(INT 1246)	35/2024 <a href="#">↗</a>
101.B	(INT 12461)	3/2024 <a href="#">↗</a>
951		4/2024 <a href="#">↗</a>
A600.B, A604, A605, A607		37/2024 <a href="#">↗</a>

Time: Until further notice

1  
The channel will be closed for vessel traffic during the winter season.

2 13, 14, 101.B, 951, A600.B, A604, A605, A607

Delete  $\langle 7,3 \rangle$

The channel will be closed between the following positions:	(1)	60°26.07'N	27°21.51'E
	(2)	60°26.49'N	27°42.58'E

3  
The restrictions do not apply to the watercraft traffic required to perform official duties, patient transports or rescue operations or for any other corresponding reason, nor to the activities of the Defence Forces.

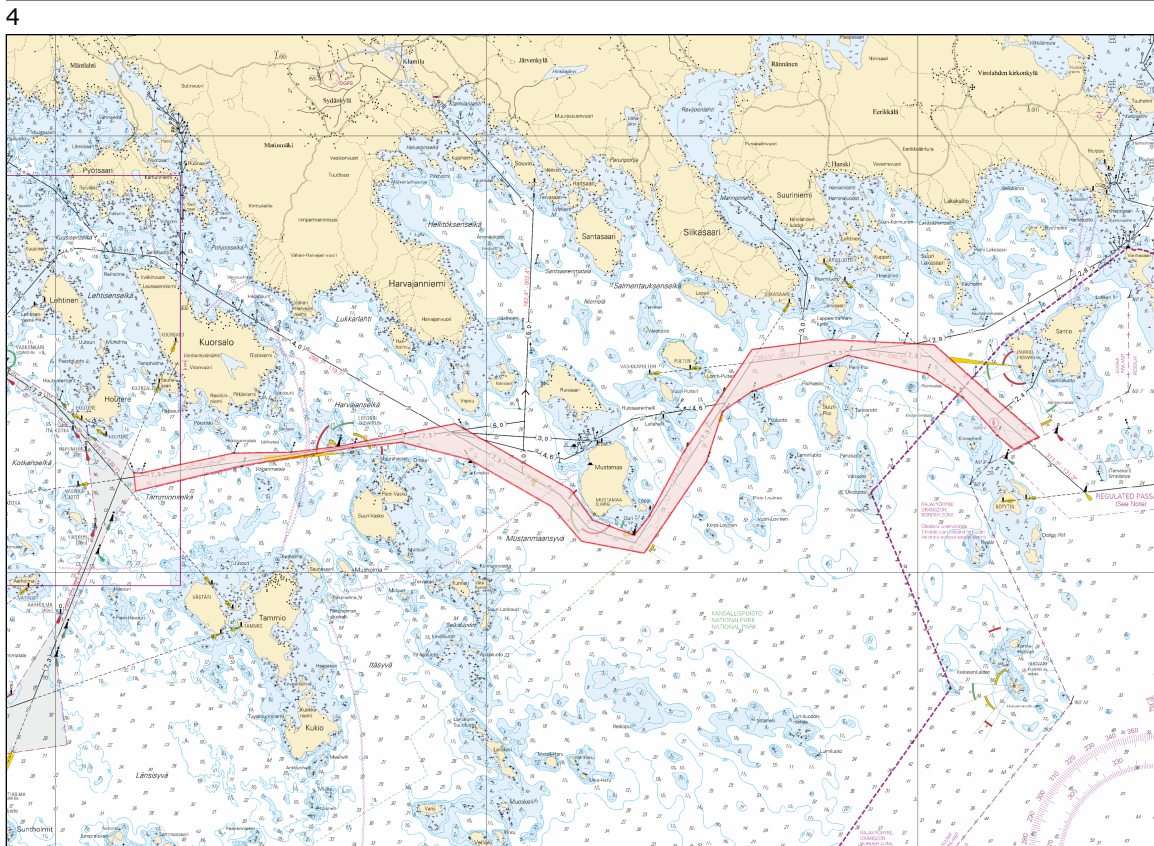


Image for reference, chart extracts not to scale of chart.

(Traficom, Helsinki/Helsingfors 2024)

# Archipelago Sea

\*39/2024


2024-02-20

Finland. Archipelago Sea. Pargas. S of Utö. ODAS buoy withdrawn.  
Buoyage

Charts		Previous
27	(INT 1190)	175/2023 <a href="#">↗</a>
167	(INT 11901)	175/2023 <a href="#">↗</a>
D713		34/2024 <a href="#">↗</a>

Cancelled: 15(T)/2023 [↗](#)

---

1	27, 167, D713		
Delete		59°44.408'N	21°22.514'E
	FI(5)Y.20s		

(Ilmatieteen laitos/Meteorologiska institutet/Finnish Meteorological Institute, Helsinki/Helsingfors 2024)

---

---

\*40(T)/2024

2024-02-20

Finland. Archipelago Sea. Naantali. Raumakari. Särkänsalmi. Kirkonsalmi.  
Notice repeated. Buoyage

Charts		Previous
26	(INT 1189)	30/2024 <a href="#">↗</a>
190	(INT 1158)	20/2024 <a href="#">↗</a>
D706, D706.1, D720, D721		39/2024 <a href="#">↗</a>


Time: Until further notice

Cancelled: 107(T)/2021 [↗](#)


---

1  
Rafts with seal repellent systems for research purposes have been anchored off Naantali, and in Raumakari, Särkänsalmi and Kirkonsalmi. The rafts are equipped with yellow lit special marks, the radar reflectors and with lit wind generators.


---

2	26, D706, D720, D721		
Add		60°27.583'N	21°55.558'E

---

3	26, D706, D721		
Add		60°27.553'N	21°55.751'E

---

4	26, D720, D721		
Add		60°28.941'N	21°52.520'E

5

26, 190, D706, D706.1

Add



60°27.660'N

22°01.282'E

6

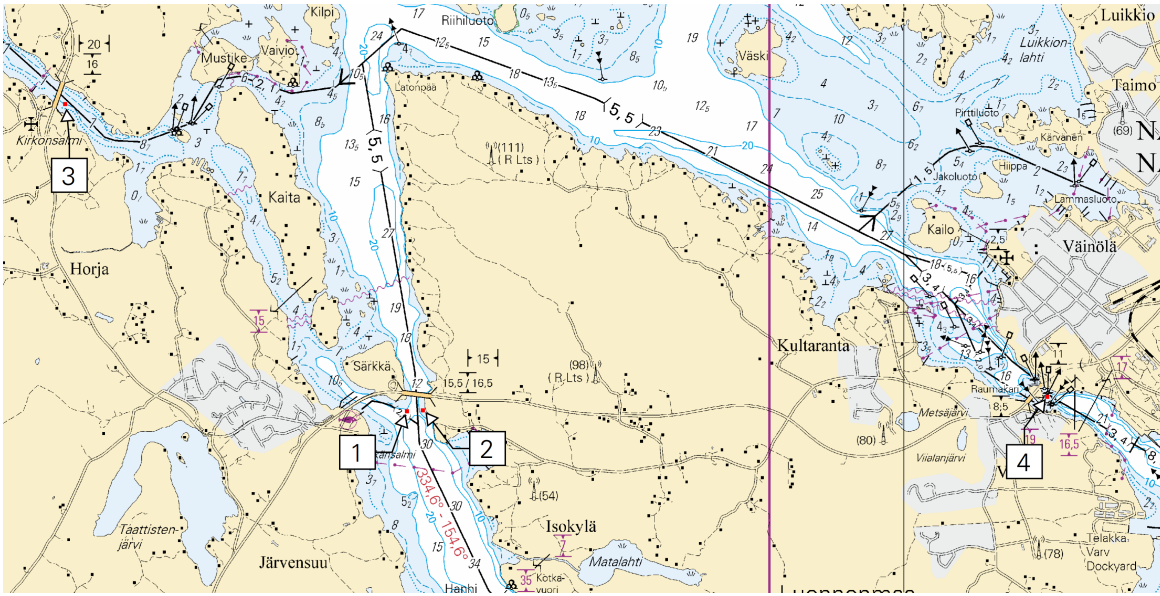


Image for reference, chart extracts not to scale of chart.

7



Image for reference, chart extracts not to scale of chart.

(Luonnonvarakeskus, Naturresursinstitutet, Natural Resources Institute Finland (LUKE) 2024)

# Bothnian Sea



\*41/2024

2024-02-20

Finland. Bothnian Sea. Brändö. Kustavi. Withdrawn ODAS buoys. Buoyage

Charts		Previous
40	(INT 1131)	176/2023 <a href="#">↗</a>
954	(INT 1210)	30/2024 <a href="#">↗</a>
955		30/2024 <a href="#">↗</a>

Cancelled: 108(T)/2023 [↗](#)

1	40, 954, 955			
Delete			60°41.095'N	20°34.800'E
	FL(5)Y.20s			
2	40, 954, 955			
Delete			60°43.63'N	20°52.90'E
	FL(5)Y.20s			

(Ilmatieteen laitos/Meteorologiska institutet/Finnish Meteorological Institute, Helsinki/Helsingfors 2024)




\*42/2024

2024-02-20

Finland. Bothnian Sea. Kristinestad. Lighthouse Kristiinankaupungin majakka operational. Buoyage

Charts		Previous
44	(INT 1135)	/
813		176/2023 <a href="#">↗</a>
956		29/2024 <a href="#">↗</a>
E811, E812		22/2024 <a href="#">↗</a>

Cancelled: 109(T)/2023 [↗](#)

1	44, 813, 956, E811, E812			
Amend			62°12.195'N	21°10.190'E
	KRISTIINANKAUPUNGIN MAJAKKA	KRISTIINANKAUPUNGIN MAJAKKA		20637, (C4328.2)
	FI(2)W.20s (exting) 	FI(2)W.20s		

(Traficom, Helsinki/Helsingfors 2024)

# Bay of Bothnia

\*43/2024

2024-02-20

Finland. Bay of Bothnia. Oulu. Luodematalat. The leading beacon Luodematala in operation. Buoyage

### Charts

57

(INT 1148)

847

### Previous

272/2023 [↗](#)

191/2023 [↗](#)

Cancelled: 102(T)/2023 [↗](#)

---

1			57, 847			
Amend						
	LUODEMATALA	LUODEMATALA		65°10.075'N	24°59.375'E	8975, (C4150)
	Q (exting)	Q				
	Racon (T) (not in use)	Racon (T)				

(Traficom, Helsinki/Helsingfors 2024)

---

---

# Announcements

\*44/2024

2024-02-20

Finland. Sailing directions for Finnish water 2.3.3. Bay of Bothnia.

**Charts**

**Previous**

References:269/2023 [↗](#)

---

1

Sailing directions for Finnish water 2.3.3 - Bay of Bothnia

The Finnish Transport and Communications Agency Traficom publishes the nautical charts and nautical publications in Finland. Nautical publications contain information to support the nautical charts. Sailing Directions for Finnish waters consists of a General information part (part 1) and descriptions of the main approach channels (Part 2 – Main approach channels). Part 2 is divided into several volumes. Sailing directions for Finnish waters - Part 1, contains general information, guidelines and links to further information. The channel descriptions include depth- and design-data with general notes on usage of the main approach channels. Sailing directions are published as PDF- documents and provided for free download at: <https://fiho.fi/lnk/sd/en>.

Channel descriptions are published together with the N2000 nautical charts. Volume 2.3.3 - Bay of Bothnia, has been published 8 February 2024.

Temporary changes to fairways are not reflected in the Sailing Directions. Mariners should follow the Notices to Mariners and ensure availability of the newest publications including any needed linked material onboard.

<https://www.traficom.fi/en/services/notices-mariners>

(Traficom, Helsinki/Helsingfors 2024)

---

---

# Current Preliminary (P) and Temporary (T) notices (20.02.2024)

## Gulf of Finland

T&P	Charts	Gulf of Finland
174(T)/2019 <a href="#">↗</a>	951	SE of Bol'soj Tjuters. Obstructions
296(T)/2020 <a href="#">↗</a>	17, 18, 191, 952, A, B	Helsinki. Sipoo. Areas and borders
20(T)/2021 <a href="#">↗</a>	951, A	TSS OFF ROOSHER ISLAND. Lighthouse Rodser extinguished. Notice repeated. Buoyage
228(T)/2021 <a href="#">↗</a>	951, A	Krestovj. Lighthouse Krestovj extinguished. Notice repeated. Buoyage
304(T)/2021 <a href="#">↗</a>	18, 192, A, B	Helsinki. Vuosaari. Notice repeated. Buoyage. Areas and borders
65(T)/2022 <a href="#">↗</a>	A, S	Vyborg. Destroyed leading beacon. Notice repeated. Buoyage
66(T)/2022 <a href="#">↗</a>	A, S	Vyborg. Light extinguished. Notice repeated. Buoyage
86(T)/2022 <a href="#">↗</a>	18, 191, 952, A, B	Helsinki. Kruunuvuori. Restrictions on small craft traffic. Fairways
90(T)/2022 <a href="#">↗</a>	951	Tiskolovo. Lighthouse Kajbolovo. Buoyage
217(T)/2023 <a href="#">↗</a>	18, 191, A, B	Helsinki. Sompasaari. Crown Bridges. Notice repeated. Buoyage
229(T)/2023 <a href="#">↗</a>	18, 191, A, B	Helsinki. Hernesaari. Buoyage
230(T)/2023 <a href="#">↗</a>	18, 191, A, B	Helsinki. Hernesaari. Buoyage. Areas and borders
270(T)/2023 <a href="#">↗</a>	951, 952	N of Purekkarineem. Floating obstruction withdrawn. Obstructions
271(T)/2023 <a href="#">↗</a>	951, 952	N of Purekkarineem. Floating obstruction. Obstructions
1(T)/2024 <a href="#">↗</a>	20, 21, 952, B	Raseborg. Channel section closed for the winter season. Fairways
3(T)/2024 <a href="#">↗</a>	13, 14, 101, 951, A	Hamina. Houtere. Channel section closed for the winter season. Fairways
24(T)/2024 <a href="#">↗</a>	18, 191, A, B	Kruunuvuori. Korkeasaari...Cultural Features. Vertical Clearances
35(T)/2024 <a href="#">↗</a>	14, 138, A	Kotka. Lehmäsaari. Destroyed leading light. Buoyage
38(T)/2024 <a href="#">↗</a>	13, 14, 101, 951, A	Violahti. Kuorsalo. Channel closed for the winter season. Fairways

## Archipelago Sea

T&P	Charts	Archipelago Sea
188(T)/2023 <a href="#">↗</a>	26, D	Pargas. Hessund...Restrictions on small craft traffic. Areas and borders
189(T)/2023 <a href="#">↗</a>	26, D	Pargas. Kirjala...Restrictions on traffic. Areas and borders
197(T)/2023 <a href="#">↗</a>	C	Sottunga. Kyrkviken. Closed channel section. Areas and borders
5(T)/2024 <a href="#">↗</a>	22, 23, 952, 953, 954, B, D	Kimitoön. Dalsbruk...Channel section closed for the winter season. Fairways
6(T)/2024 <a href="#">↗</a>	25, 26, 28, 29, 37, 953, 954, D	Pargas. Norrskata. Channel section closed for the winter season. Fairways
7(T)/2024 <a href="#">↗</a>	28, 29, 37, 953, 954, C, D	Pargas. Houtskär...Channel section closed for the winter season. Fairways
17(T)/2024 <a href="#">↗</a>	25, 26, 37, 105, 952, 953, 954, D	Pargas. Innamo. Channel section closed for the winter season. Fairways
18(T)/2024 <a href="#">↗</a>	25, 26, 37, 105, 952, 953, 954, D	Pargas. Seili. Channel section closed for the winter season. Fairways
19(T)/2024 <a href="#">↗</a>	22, 23, 25, 26, 952, 953, 954, B, D	Kimitoön. Dragsfjärd. Channel section closed for the winter season. Fairways
20(T)/2024 <a href="#">↗</a>	26, 190, D	Turku. Aurajoki. Dredging operations. Areas and borders
34(T)/2024 <a href="#">↗</a>	D	Kaarina. Kuusistonsalmi...Notice repeated. Areas and borders
40(T)/2024 <a href="#">↗</a>	26, 190, D	Naantali. Raumakari. Särkänsalmi. Kirkonsalmi. Notice repeated. Buoyage

## Aland Sea

T&P	Charts	Aland Sea
-	-	

## Bothnian Sea

T&P	Charts	Bothnian Sea
30(T)/2022 <a href="#">↗</a>	41, 127, E	Rauma. Ulko-Petäjäs. Areas and borders
160(T)/2022 <a href="#">↗</a>	41, 127, E	Rauma. Otanlahti. Flytande ö. Obstructions
104(T)/2023 <a href="#">↗</a>	955	Off Pori. ODAS buoys. Buoyage
128(T)/2023 <a href="#">↗</a>	953, 954, 955, C	Saltvik. Brändö. Measuring equipment on seabed. Buoyage
253(T)/2023 <a href="#">↗</a>	955	E of Gävle. Light temporarily unlit. Buoyage
8(T)/2024 <a href="#">↗</a>	42, 125, E	Pori. Tahkoluoto. Notice repeated. Buoyage

# The Quark

T&P	Charts	The Quark
238(T)/2022 <a href="#">↗</a>	48, 115, 921, F, M	Vaasa. Vaskiluoto. Notice repeated. Buoyage
57(T)/2023 <a href="#">↗</a>	957, F	S of Umeå. Light Fjärdgrund extinguished. Buoyage
126(T)/2023 <a href="#">↗</a>	48, 115, 820	Vaasa. Vaskiluoto. Dredging operations. Areas and borders
142(T)/2023 <a href="#">↗</a>	48, 115, 820, 956, 957, 8061, 8065	Vaasa. Vaskiluoto. Notice repeated. Buoyage. Fairways. Fairway areas
254(T)/2023 <a href="#">↗</a>	47, 48, 822, 956, 957	Buoys and spar buoy temporarily withdrawn for the winter. Virtual AIS. Buoyage
255(T)/2023 <a href="#">↗</a>	48, 115, 820	Vaasa. Vaskiluoto. Notice repeated. Buoyage
256(T)/2023 <a href="#">↗</a>	48, 115, 820	Vaasa. Vaskiluoto. Dredging operations. Notice repeated. Areas and borders
266(T)/2023 <a href="#">↗</a>	47, 825, 956, 957, 8065	TSS in Norra Kvarken. Buoys temporarily withdrawn for the winter. Buoyage
267(T)/2023 <a href="#">↗</a>	47, 825, 956, 957, 8065	TSS IN NORRA KVARKEN. TSS and two-way routes "in Norra Kvarken" temporarily ...

# Bay of Bothnia

T&P	Charts	Bay of Bothnia
47(T)/2023 <a href="#">↗</a>	57, 119, 845, 846	Port of Oulu. ( N2000 ) (BSCD2000)...Depths. Fairways. Fairway areas
257(T)/2023 <a href="#">↗</a>	60, 958	Buoys temporarily withdrawn for the winter. Virtual AIS. Buoyage
263(T)/2023 <a href="#">↗</a>	55, 119, 838, 839, 958, 8071	Raahe. Light Heikinkari extinguished. Buoyage
9(T)/2024 <a href="#">↗</a>		Skelleftehamn. Light Gasoren. Unreliable sectors. Buoyage

# Vuoksi watercourse

T&P	Charts	Vuoksi watercourse
268(T)/2019 <a href="#">↗</a>	M	Kuopio. Kotkatniemi. Buoyage
214(T)/2020 <a href="#">↗</a>		Leppävirta. Hyvärilä. Buoyage
90(T)/2023 <a href="#">↗</a>	921, M	Kuopio. Light Sotkanselkä operational. Notice repeated. Buoyage

## Kymijoki watercourse

T&P	Charts	Kymijoki watercourse
-	-	

## Kokemäijoki watercourse

T&P	Charts	Kokemäijoki watercourse
-	-	

## Oulujoki watercourse

T&P	Charts	Oulujoki watercourse
-	-	

## Paatsjoki watercourse

T&P	Charts	Paatsjoki watercourse
-	-	

## Saimaa Canal

T&P	Charts	Saimaa Canal
10(T)/2024 <a href="#">↗</a>		Saimaa Canal closed for the winter season.

## Northern Baltic

T&P	Charts	Northern Baltic
11(T)/2024 <a href="#">↗</a>	952, 953, 954	Hiiumaa. Tahkuna. Light Lehtma extinguished. Buoyage

# Announcements

T&P	Charts	Announcements
291(T)/2022 <a href="#">↗</a>		Bay of Bothnia. Off Oulu. V-AIS. Notice repeated.
99(T)/2023 <a href="#">↗</a>		Off Merikarvia. Hydrographic surveying in progress.
137(T)/2023 <a href="#">↗</a>		Helsinki. Korkeasaari...Restrictions on small craft traffic