



# Notices to Mariners

## NtM 10/2025

Notices: 57 - 66 / 10.04.2025



# Table of Contents

<b>Title</b>	<b>Page</b>
Index by Area	2
Index by Chart	3
Gulf of Finland	4
Archipelago Sea	5
Bothnian Sea	8
Bay of Bothnia	10
Vuoksi watercourse	12
Announcements	13
Current Preliminary (P) and Temporary (T) notices (10.04.2025)	15

# Index by Area

## **Gulf of Finland**

### **Charts**

\*57(T)/2025

951, 952

## **Archipelago Sea**

### **Charts**

\*58/2025

26, 190, D

\*59/2025

109

## **Bothnian Sea**

### **Charts**

\*60/2025

40, 801, 802, 955

\*61/2025

954

\*62/2025

41, 805, 806, 955

## **Bay of Bothnia**

### **Charts**

\*63/2025

56, 60, 958, 8071

## **Vuoksi watercourse**

### **Charts**

\*64(T)/2025

L

## **Announcements**

### **Charts**

\*65/2025

\*66/2025

# Index by Chart

<b>Charts</b>	<b>Notices</b>
26	*58/2025
40	*60/2025
41	*62/2025
56	*63/2025
60	*63/2025
109	*59/2025
190	*58/2025
801	*60/2025
802	*60/2025
805	*62/2025
806	*62/2025
951	*57(T)/2025
952	*57(T)/2025
954	*61/2025
955	*60/2025, *62/2025
958	*63/2025
8071	*63/2025
D	*58/2025
L	*64(T)/2025

# Gulf of Finland

\*57(T)/2025

2025-04-04

Finland. Gulf of Finland. E of lighthouse Kallbådagrund. Notice repeated. Areas and borders

Charts	Previous
951	21/2025 <a href="#">↗</a>
952	53/2025 <a href="#">↗</a>

Time: 7 April - to approx. 21 April 2025

Cancelled: 21(T)/2025 [↗](#)

1

The vessel C/S Pleijel is performing cable service works in area E of lighthouse Kallbådagrund. The call sign of the vessel Pleijel is SMWY. The vessel monitor VHF channels 16 and 72. MMSI:265098000

The vessel requests a minimum clearance of 1NM.

More information: GSM tel: 46 480 420417, 46 70270 5013, pleijel@balticoffshore.se

2

951, 952

Add -----

Between the following positions:

- (1) 59°57.055'N 26°05.143'E
- (2) 59°56.807'N 26°06.234'E
- (3) 59°57.103'N 26°06.496'E
- (4) 59°57.338'N 26°05.428'E

3

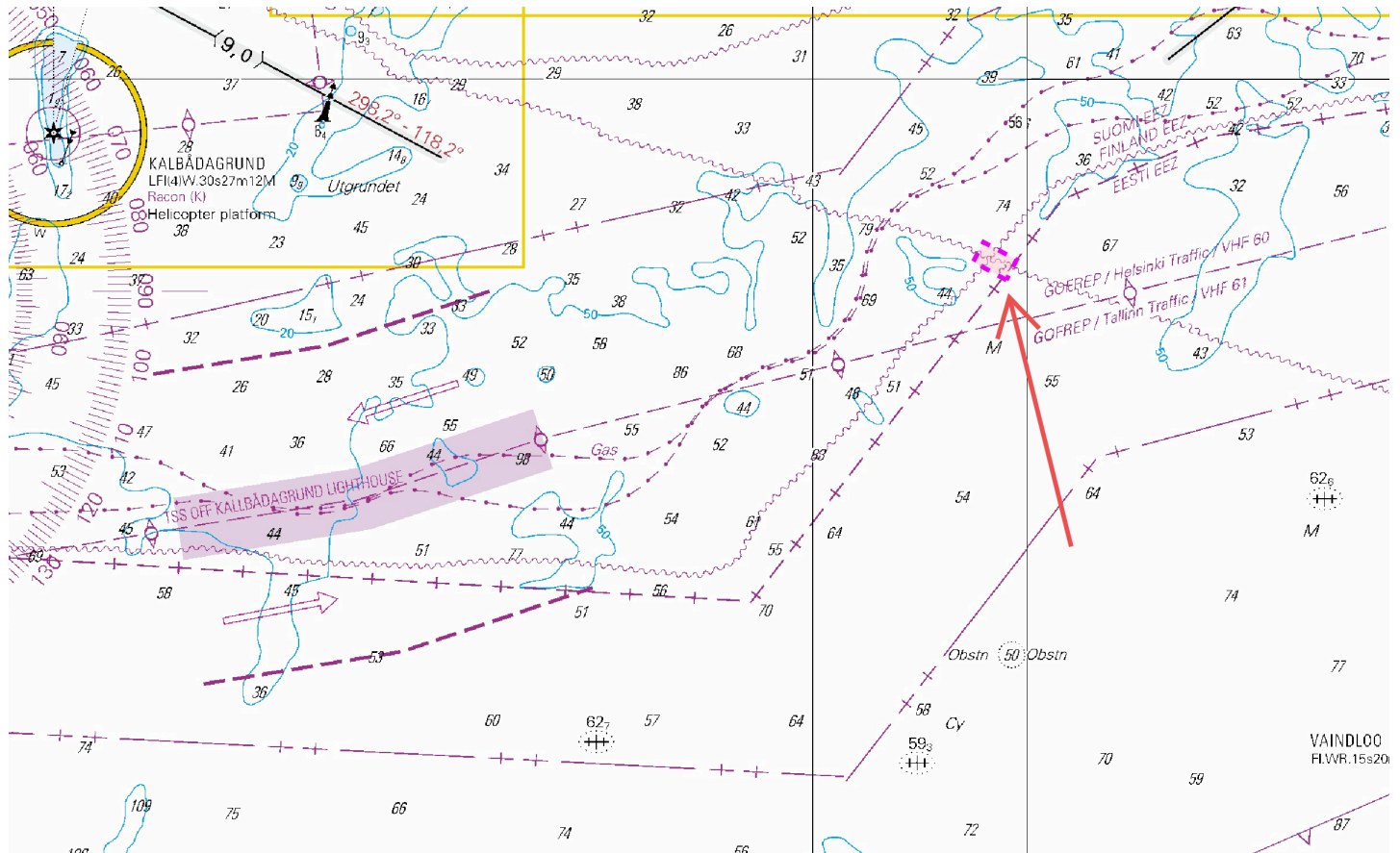


Image for reference, chart extracts not to scale of chart.

# Archipelago Sea


\*58/2025


2025-04-10


Finland. Archipelago Sea. Turku. Ruissalo. (MSL/MW). Fairway areas


Charts		Previous
26	(INT 1189)	53/2025 <a href="#">↗</a>
190	(INT 1158)	53/2025 <a href="#">↗</a>
D706, D706.2		53/2025 <a href="#">↗</a>

References: [145/2019 ↗](#), [53/2025 ↗](#)

1	26, 190, D706, D706.2				
Amend			Fairway area edge line between positions:	(1)	60°24.302'N 22°07.107'E
			Insert grey tint in fairway area	(2)	60°24.260'N 22°07.449'E
				(3)	60°24.634'N 22°07.657'E
				(4)	60°24.759'N 22°07.799'E
				(5)	60°24.925'N 22°08.053'E
				(6)	60°24.964'N 22°07.930'E
				(7)	60°24.470'N 22°07.332'E
				(8)	60°24.302'N 22°07.107'E

2	26, 190, D706, D706.2				
Amend			Fairway area edge line between positions:	(1)	60°24.925'N 22°08.053'E
			Insert grey tint in fairway area	(2)	60°25.123'N 22°08.487'E
				(3)	60°25.200'N 22°08.481'E
				(4)	60°24.964'N 22°07.930'E
				(5)	60°24.925'N 22°08.053'E

3	26, 190, D706, D706.2				
Amend			Fairway area edge line between positions:	(1)	60°25.123'N 22°08.487'E
			Insert grey tint in fairway area	(2)	60°25.177'N 22°08.663'E
				(3)	60°25.215'N 22°08.945'E
				(4)	60°25.276'N 22°09.439'E
				(5)	60°25.329'N 22°09.228'E
				(6)	60°25.329'N 22°09.023'E
				(7)	60°25.200'N 22°08.481'E
				(8)	60°25.123'N 22°08.487'E

4	26, 190, D706, D706.2				
Amend			Farledsområdets begränsningslinje mellan positionerna:	(1)	60°25.276'N 22°09.439'E
			Insert grey tint in fairway area	(2)	60°25.289'N 22°09.552'E
				(3)	60°25.292'N 22°09.973'E
				(4)	60°25.253'N 22°10.373'E
				(5)	60°25.333'N 22°10.370'E
				(6)	60°25.329'N 22°09.228'E
				(7)	60°25.276'N 22°09.439'E

Amend

10<sub>g</sub>

10,9m

Fairway area edge line  
between positions:

Insert grey tint in fairway  
area

(1)	60°25.253'N	22°10.373'E
(2)	60°25.691'N	22°11.739'E
(3)	60°25.749'N	22°11.671'E
(4)	60°25.682'N	22°11.502'E
(5)	60°25.642'N	22°11.387'E
(6)	60°25.386'N	22°10.579'E
(7)	60°25.333'N	22°10.370'E
(8)	60°25.253'N	22°10.373'E

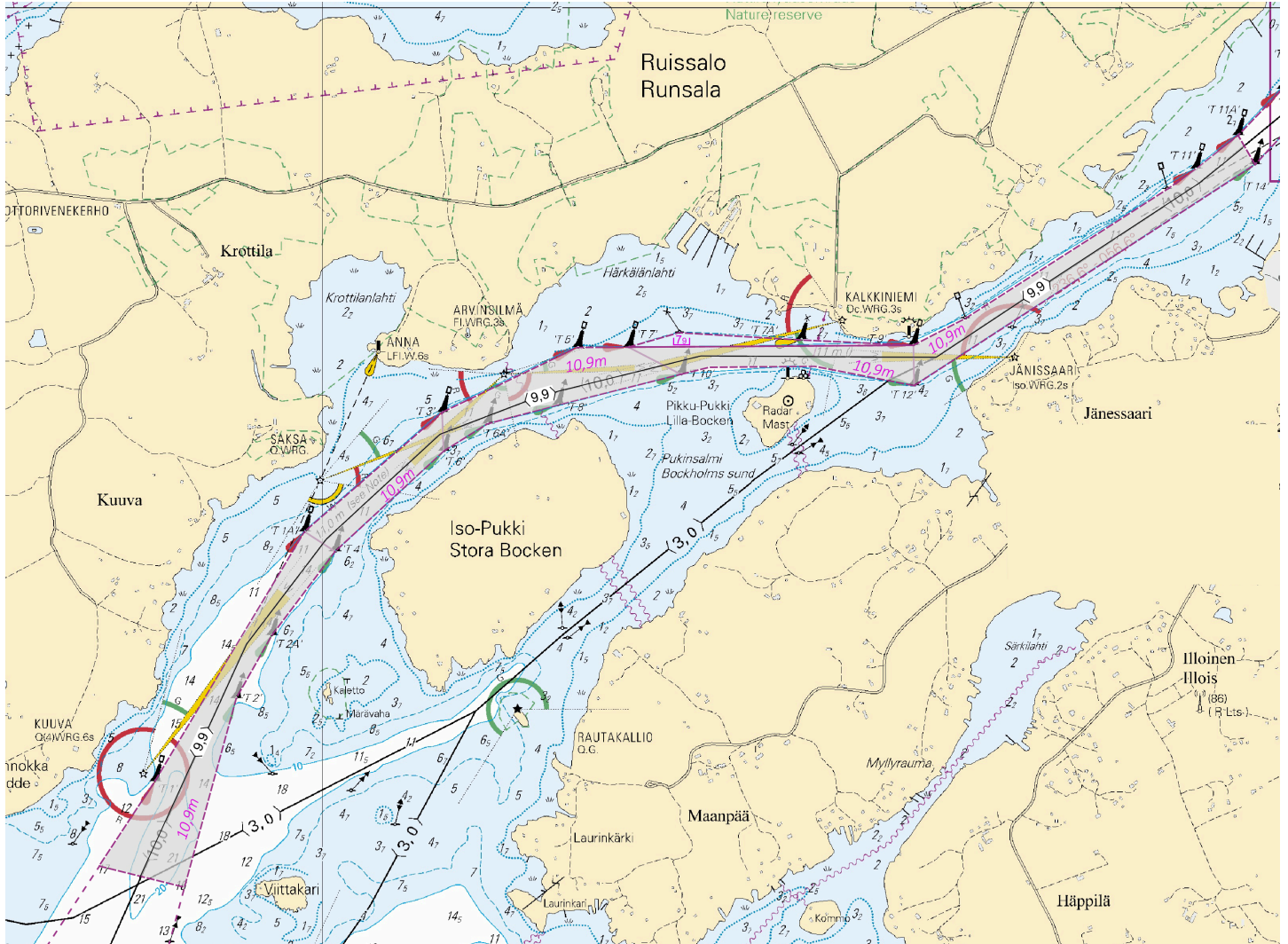


Image for reference, chart extracts not to scale of chart.

(Traficom, Helsinki/Helsingfors 2025)

\*59/2025

2025-04-10

Finland. Archipelago Sea. Kumlinge. Enklinge. Äsplund. ( N2000 )  
(BSCD2000). Fairways

Charts

109.A

Previous

(INT 11921)

36/2025 [↗](#)

References: [33/2025 ↗](#), [36/2025 ↗](#)

1

The notice NtM 6/36/2025 was mistakenly also applied to Harbour Chart 109.A. Below is the correction for this chart.

2

109.A

Amend  $\left\langle 3,9 \right\rangle \rightarrow \left\langle 4,0 \right\rangle$  Between the following positions:

(1) 60°18.44'N 20°44.12'E

(2) 60°18.96'N 20°45.44'E

3

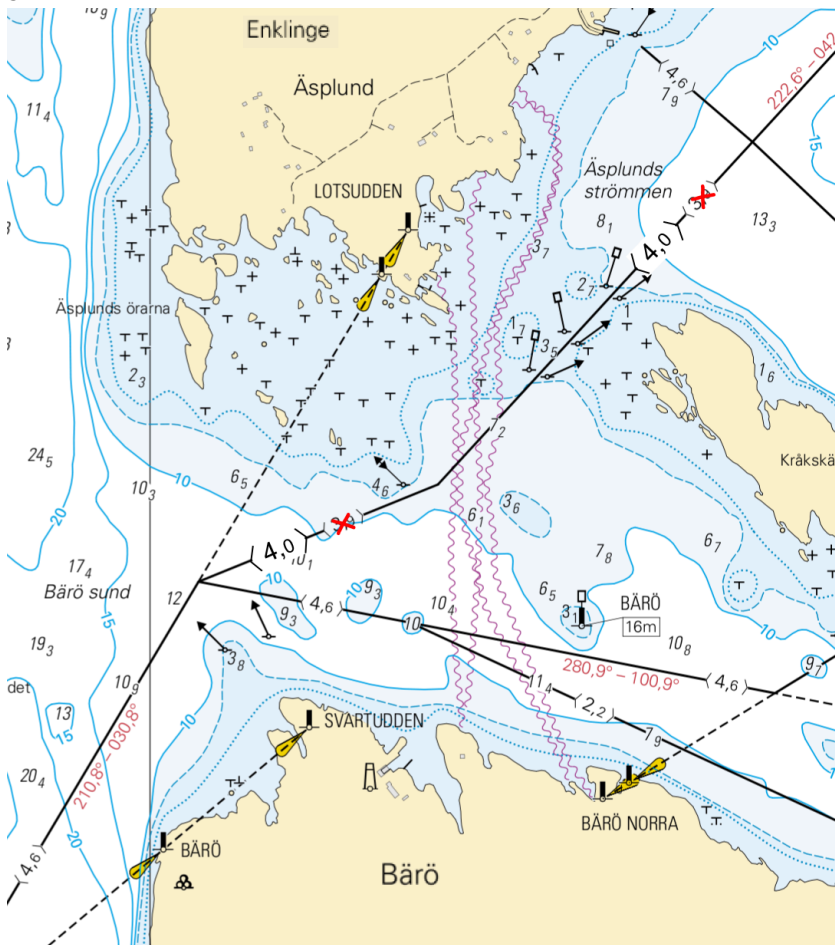


Image for reference, chart extracts not to scale of chart.

(Traficom, Helsinki/Helsingfors 2025)

# Bothnian Sea

\*60/2025

2025-04-10

Finland. Bothnian Sea. Kustavi. Isokari. ( N2000 ) (BSCD2000). Fairways

Charts		Previous
40	(INT 1131)	189/2024 <a href="#">↗</a>
801		189/2024 <a href="#">↗</a>
802, 802.A		189/2024 <a href="#">↗</a>
955		38/2025 <a href="#">↗</a>

1 40, 801, 802, 802.A, 955

Amend  $\leftarrow (7,8) \rightarrow$   $\rightarrow$   $\leftarrow (3,7) \rightarrow$  Between the following positions:

(1) 60°42.544'N 21°02.959'E

(2) 60°43.350'N 21°01.809'E

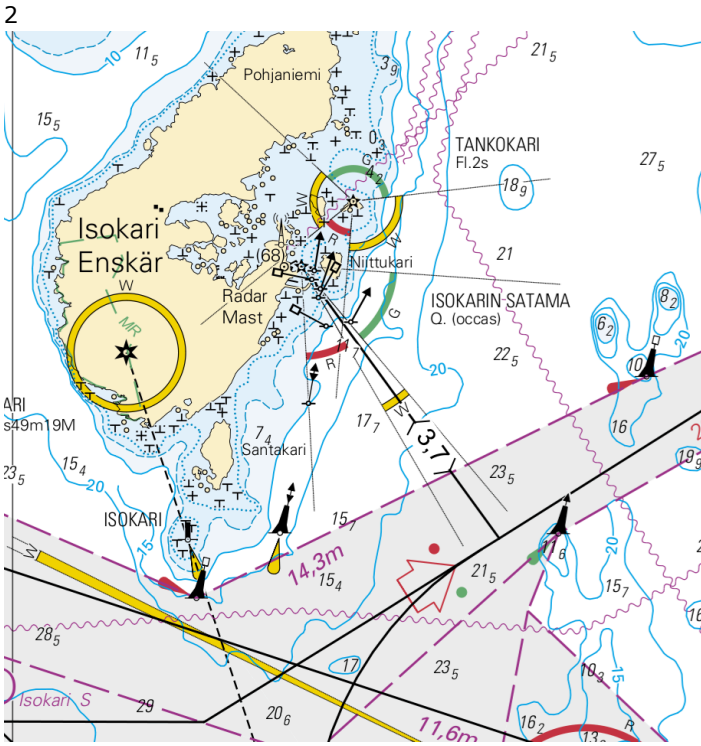


Image for reference, chart extracts not to scale of chart.

(Traficom, Helsinki/Helsingfors 2025)

\*61/2025

2025-04-10

Finland. Bothnian Sea. Kustavi. Isokari. (MSL/MW). Fairways

**Charts**

954


(INT 1210)

**Previous**

53/2025 [↗](#)

References:60/2025 [↗](#)

1 954

Add —(7,8)—  —(3,9)—

(1) 60°42.544'N 21°02.959'E

(2) 60°43.350'N 21°01.809'E

(Traficom, Helsinki/Helsingfors 2025)

\*62/2025

2025-04-10

Finland. Bothnian Sea. Rauma. Kuohunpää. Buoyage

**Charts**

41

(INT 1132)

**Previous**

37/2025 [↗](#)

805

37/2025 [↗](#)

806

185/2024 [↗](#)

955

60/2025 [↗](#)

1 41, 805, 806, 955

Amend



61°13.977'N

21°15.493'E

5322

(Traficom, Helsinki/Helsingfors 2025)

# Bay of Bothnia

\*63/2025

2025-04-10

Finland. Bay of Bothnia. SW of Lighthouse Kemi 1. ( N2000 ) (BSCD2000).  
Fairway areas

Charts		Previous
56	(INT 1147)	54/2025 <a href="#">↗</a>
60	(INT 1152)	54/2025 <a href="#">↗</a>
958	(INT 1209)	54/2025 <a href="#">↗</a>
8071/INDEX		54/2025 <a href="#">↗</a>

References: [85/2024 ↗](#), [54/2025 ↗](#)

1	60, 958, 8071/INDEX				
Amend		Swept area edge line between positions:	(1)	65°20.390'N	23°56.075'E
			(2)	65°18.124'N	23°50.838'E
			(3)	65°15.745'N	23°48.916'E
			(4)	65°11.738'N	23°51.181'E
			(5)	65°11.701'N	23°53.032'E
			(6)	65°15.706'N	23°50.773'E
			(7)	65°17.729'N	23°52.552'E
			(8)	65°19.977'N	23°57.089'E
			(9)	65°20.390'N	23°56.075'E

2	56, 60, 958, 8071/INDEX				
Amend		Swept area edge line between positions:	(1)	65°10.960'N	23°53.449'E
			(2)	65°10.962'N	23°51.618'E
			(3)	65°09.113'N	23°52.659'E
			(4)	65°05.084'N	23°47.356'E
			(5)	65°04.590'N	23°29.872'E
			(6)	65°03.785'N	23°30.016'E
			(7)	65°04.533'N	23°57.046'E
			(8)	65°10.960'N	23°53.449'E



# Vuoksi watercourse

\*64(T)/2025

2025-04-10

Finland. Vuoksi watercourse. Lappeenranta. Muukonsaari. Buoyage

**Charts**

L201, L201.3

**Previous**

18/2025 [↗](#)

Time: Until further notice

---

1

The light of the leading beacon is inoperative during the repair work.

---

2

L201, L201.3

Amend

  
KOIVULUOTO  
Q.W (exting)

61°09.016'N

28°27.483'E

13571

---

(Traficom, Helsinki/Helsingfors 2025)

---

# Announcements

\*65/2025

2025-04-10

Finland. Sailing Directions for Finnish waters. Channel descriptions of Main approach channels. Main approach channels 2.2.1 - Åland Sea and Archipelago Sea, West.

**Charts**

**Previous**

References:28/2025 [🔗](#)

---

1

Sailing directions for Finnish water 2.2.1 - Åland Sea and Archipelago Sea, West (New versions of publications).

NOTE! The guide's name is changing; this guide replaces the previous version, which was called: 2.2.1 - Archipelago Sea and Åland Sea.

The Finnish Transport and Communications Agency Traficom publishes the nautical charts and nautical publications in Finland. Nautical publications contain information to support the nautical charts. Sailing Directions for Finnish waters consists of a General information part (part 1) and descriptions of the main approach channels (Part 2 – Main approach channels). Part 2 is divided into several volumes. Sailing directions for Finnish waters - Part 1, contains general information, guidelines and links to further information. The channel descriptions include depth- and design-data with general notes on usage of the main approach channels. Sailing directions are published as PDF- documents and provided for free download at: <https://fiho.fi/lnk/sd/en>.

Channel descriptions are published together with the N2000 nautical charts. Volume 2.2.1 - Åland Sea and Archipelago Sea, West, has been published 2 April 2025.

Temporary changes to fairways are not reflected in the Sailing Directions. Mariners should follow the Notices to Mariners and ensure availability of the newest publications including any needed linked material onboard.

<https://www.traficom.fi/en/services/notices-mariners>

(Traficom, Helsinki/Helsingfors 2025)

---

---

\*66/2025

2025-04-10

Finland. Finnish coastal waters and inland waterways. Spring inspection of floating aids to navigation.

**Charts**

**Previous**

---

1

Mariners who use channels marked by floating aids to navigation are cautioned that these aids may be out of position, damaged or unlit. The inspection of spar buoys and buoys performed after the winter season lasts several weeks.

(Traficom, Helsinki/Helsingfors 2025)

---

---

# Current Preliminary (P) and Temporary (T) notices (10.04.2025)

## Gulf of Finland

T&P	Charts	Gulf of Finland
174(T)/2019 <a href="#">🔗</a>	951	SE of Bol'soj Tjuters. Obstructions
296(T)/2020 <a href="#">🔗</a>	17, 18, 191, 952, A, B	Helsinki. Sipoo. Areas and borders
20(T)/2021 <a href="#">🔗</a>	951, A	TSS OFF ROOSHER ISLAND. Lighthouse Rodser extinguished. Notice repeated. Buoyage
228(T)/2021 <a href="#">🔗</a>	951, A	Krestovyy. Lighthouse Krestovyy extinguished. Notice repeated. Buoyage
304(T)/2021 <a href="#">🔗</a>	18, 192, A, B	Helsinki. Vuosaari. Notice repeated. Buoyage. Areas and borders
65(T)/2022 <a href="#">🔗</a>	A, S	Vyborg. Destroyed leading beacon. Notice repeated. Buoyage
66(T)/2022 <a href="#">🔗</a>	A, S	Vyborg. Light extinguished. Notice repeated. Buoyage
86(T)/2022 <a href="#">🔗</a>	18, 191, 952, A, B	Helsinki. Kruunuvuori. Restrictions on small craft traffic. Fairways
90(T)/2022 <a href="#">🔗</a>	951	Tiskolovo. Lighthouse Kajbolovo. Buoyage
229(T)/2023 <a href="#">🔗</a>	18, 191, A, B	Helsinki. Hernesaari. Buoyage
230(T)/2023 <a href="#">🔗</a>	18, 191, A, B	Helsinki. Hernesaari. Buoyage. Areas and borders
194(T)/2024 <a href="#">🔗</a>	18, 191, A, B	Helsinki. Sompasaari. Buoyage
230(T)/2024 <a href="#">🔗</a>	18, 191, A, B	Helsinki. Melkki. Light Melkki extinguished. Buoyage
238(T)/2024 <a href="#">🔗</a>	17, 952, A	Off Porvoo. Lighthouse Porvoon majakka unlit. Buoyage
284(T)/2024 <a href="#">🔗</a>	18, 191, A, B	Helsinki. Hakaniemi. Bridge construction work. Areas and borders
57(T)/2025 <a href="#">🔗</a>	951, 952	E of lighthouse Kallbådagrund. Notice repeated. Areas and borders

## Archipelago Sea

T&P	Charts	Archipelago Sea
189(T)/2023 <a href="#">🔗</a>	26, D	Pargas. Kirjala...Restrictions on traffic. Areas and borders
40(T)/2024 <a href="#">🔗</a>	26, 190, D	Naantali. Raumakari. Särkäsalmi. Kirkonsalmi. Notice repeated. Buoyage
130(T)/2024 <a href="#">🔗</a>	27, D	Pargas. S of Utö. ODAS buoy. Buoyage
168(T)/2024 <a href="#">🔗</a>	25, 26, 37, D	Pargas. Seili. ODAS buoy. Buoyage
239(T)/2024 <a href="#">🔗</a>	27, 167, D	S of Utö. Söderdjupet. Measuring equipment on seabed. Areas and borders
250(T)/2024 <a href="#">🔗</a>	26, D	Pargas. Hessund...Restrictions on traffic. Areas and borders
267(T)/2024 <a href="#">🔗</a>	26, 190, D	Port of Turku. Construction works. Areas and borders

## Aland Sea

T&P	Charts	Aland Sea
97(T)/2024 <a href="#">↗</a>	32, 160, C	Mariehamn. Lemströms canal...Restrictions on traffic. Areas and borders
155(T)/2024 <a href="#">↗</a>	31, 935, C	TSS SOUTH ÅLAND SEA. Light Flötjan extinguished. Buoyage

## Bothnian Sea

T&P	Charts	Bothnian Sea
121(T)/2024 <a href="#">↗</a>	45, 46, 815, 816	Korsnäs. Measuring equipment on seabed. Obstructions
6(T)/2025 <a href="#">↗</a>	42, 125	Pori. Tahkoluoto. Notice repeated. Buoyage

## The Quark

T&P	Charts	The Quark
238(T)/2022 <a href="#">↗</a>	48, 115, 921, F, M	Vaasa. Vaskiluoto. Notice repeated. Buoyage
126(T)/2023 <a href="#">↗</a>	48, 115, 820	Vaasa. Vaskiluoto. Dredging operations. Areas and borders
256(T)/2023 <a href="#">↗</a>	48, 115, 820	Vaasa. Vaskiluoto. Dredging operations. Notice repeated. Areas and borders
247(T)/2024 <a href="#">↗</a>	48, 820, 956, 957	Vaasa. Johansson. Buoyage
262(T)/2024 <a href="#">↗</a>	48, 115, 820	Vaasa. Vaskiluoto. ( N2000 ) (BSCD2000). Buoyage. Fairway areas
279(T)/2024 <a href="#">↗</a>	48, 115, 820, 957, 8061, 8065	Vaasa. Vaskiluoto. Buoyage. Fairway areas
16(T)/2025 <a href="#">↗</a>	47, 825, 956, 957, 8065	Buoyage reinstated after the winter season. Buoyage

## Bay of Bothnia

T&P	Charts	Bay of Bothnia
145(T)/2024 <a href="#">↗</a>	57, 846, 958, 8071	Hailuoto. Bridge construction work. Areas and borders
164(T)/2024 <a href="#">↗</a>	57, 119, 846	Oulu. Pikisaari. Fairways
197(T)/2024 <a href="#">↗</a>	57, 119, 845, 846	Oulu. Port of Oulu. Dredging operations. Areas and borders
270(T)/2024 <a href="#">↗</a>	57, 846	Hailuoto. Channel section closed for the winter season. Areas and borders
3(T)/2025 <a href="#">↗</a>	57, 60, 848, 958	Off Oulu. SW of Lighthouse Oulu 1. Lost buoy. Virtual AIS. Buoyage
7(T)/2025 <a href="#">↗</a>	60	Kemi. NE of Lighthouse Kemi 1...Winter break. Areas and borders
49(T)/2025 <a href="#">↗</a>	57, 119, 845, 846	Port of Oulu. ( N2000 ) (BSCD2000)...Depths. Fairways. Fairway areas

## Vuoksi watercourse

T&P	Charts	Vuoksi watercourse
214(T)/2020 <a href="#">↗</a>		Leppävirta. Hyvärilä. Buoyage
64(T)/2025 <a href="#">↗</a>	L	Lappeenranta. Muukonsaari. Buoyage

## Kymijoki watercourse

T&P	Charts	Kymijoki watercourse
-	-	

## Kokemäijoki watercourse

T&P	Charts	Kokemäijoki watercourse
-	-	

## Oulujoki watercourse

T&P	Charts	Oulujoki watercourse
-	-	

## Paatsjoki watercourse

T&P	Charts	Paatsjoki watercourse
-	-	

## Saimaa Canal

T&P	Charts	Saimaa Canal
254(T)/2024 <a href="#">↗</a>		Saimaa Canal closed for the winter season.

# Northern Baltic

T&P	Charts	Northern Baltic
11(T)/2024 <a href="#">↗</a>	952, 953, 954	Hiiumaa. Tahkuna. Light Lehtma extinguished. Buoyage

# Announcements

T&P	Charts	Announcements
137(T)/2023 <a href="#">↗</a>		Helsinki. Korkeasaari...Restrictions on small craft traffic
102(T)/2024 <a href="#">↗</a>		Pargas. Hessund. Bridge construction work.