



# Notices to Mariners

## NtM 11/2025

Notices: 67 - 74 / 20.04.2025



# Table of Contents

<b>Title</b>	<b>Page</b>
Index by Area	2
Index by Chart	3
Gulf of Finland	4
Archipelago Sea	5
Bothnian Sea	9
Vuoksi watercourse	10
Announcements	11
Current Preliminary (P) and Temporary (T) notices (17.04.2025)	12

# Index by Area

## Gulf of Finland

### Charts

67/2025	952
*68/2025	951, 952

## Archipelago Sea

### Charts

*69/2025	26, 190, D
*70/2025	23, 25, B, D
*74/2025	23, 25, B, D

## Bothnian Sea

### Charts

*71/2025	41, 127, 805
----------	--------------

## Vuoksi watercourse

### Charts

*72(T)/2025	M
-------------	---

## Announcements

### Charts

*73/2025	
----------	--

# Index by Chart

<b>Charts</b>	<b>Notices</b>
23	*70/2025, *74/2025
25	*70/2025, *74/2025
26	*69/2025
41	*71/2025
127	*71/2025
190	*69/2025
805	*71/2025
951	*68/2025
952	67/2025, *68/2025
B	*70/2025, *74/2025
D	*69/2025, *70/2025, *74/2025
M	*72(T)/2025

# Gulf of Finland

67/2025

2025-04-17

Estonia. Gulf of Finland. Estonia. Kolga laht. Obstructions

Charts

952

Previous

57/2025 [↗](#)

1

952

Add **#** (34)

Foul ground

59°31.99'N

25°27.02'E

(NtM 4/48, Tallinn 2025)

\*68/2025

2025-04-17

Finland. Gulf of Finland. E of lighthouse Kallbådagrund. Operations completed. Areas and borders

Charts

951

952

Previous

57/2025 [↗](#)

67/2025 [↗](#)

Cancelled: 57(T)/2025 [↗](#)

1

951, 952

Delete **---**

Between the following positions:

(1) 59°57.055'N 26°05.143'E

(2) 59°56.807'N 26°06.234'E

(3) 59°57.103'N 26°06.496'E

(4) 59°57.338'N 26°05.428'E

2

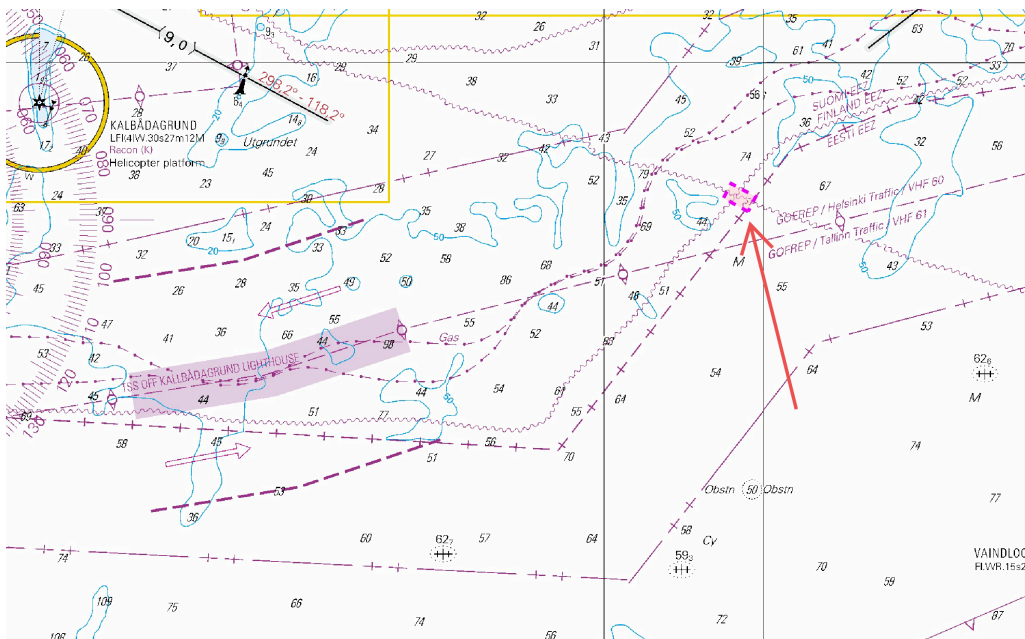


Image for reference, chart extracts not to scale of chart.

(GAC Finland Oy, 2025)

# Archipelago Sea

\*69/2025

2025-04-17

Finland. Archipelago Sea. Turku. Ruissalo. (MSL/MW). Fairway areas

Charts		Previous
26	(INT 1189)	58/2025 <a href="#">↗</a>
190, 190.C	(INT 1158)	58/2025 <a href="#">↗</a>
D706, D706.2		58/2025 <a href="#">↗</a>

References: [145/2019](#) [↗](#), [53/2025](#) [↗](#), [58/2025](#) [↗](#)

1	26, 190, 190.C, D706, D706.2			
Add	10,9m	Fairway area edge line between positions:	(1)	60°25.691'N 22°11.739'E
		Insert grey tint in fairway area	(2)	60°25.749'N 22°11.671'E
			(3)	60°25.840'N 22°11.848'E
			(4)	60°25.987'N 22°12.218'E
			(5)	60°26.065'N 22°12.491'E
			(6)	60°25.981'N 22°12.617'E
			(7)	60°25.912'N 22°12.278'E
			(8)	60°25.795'N 22°11.935'E
			(9)	60°25.691'N 22°11.739'E

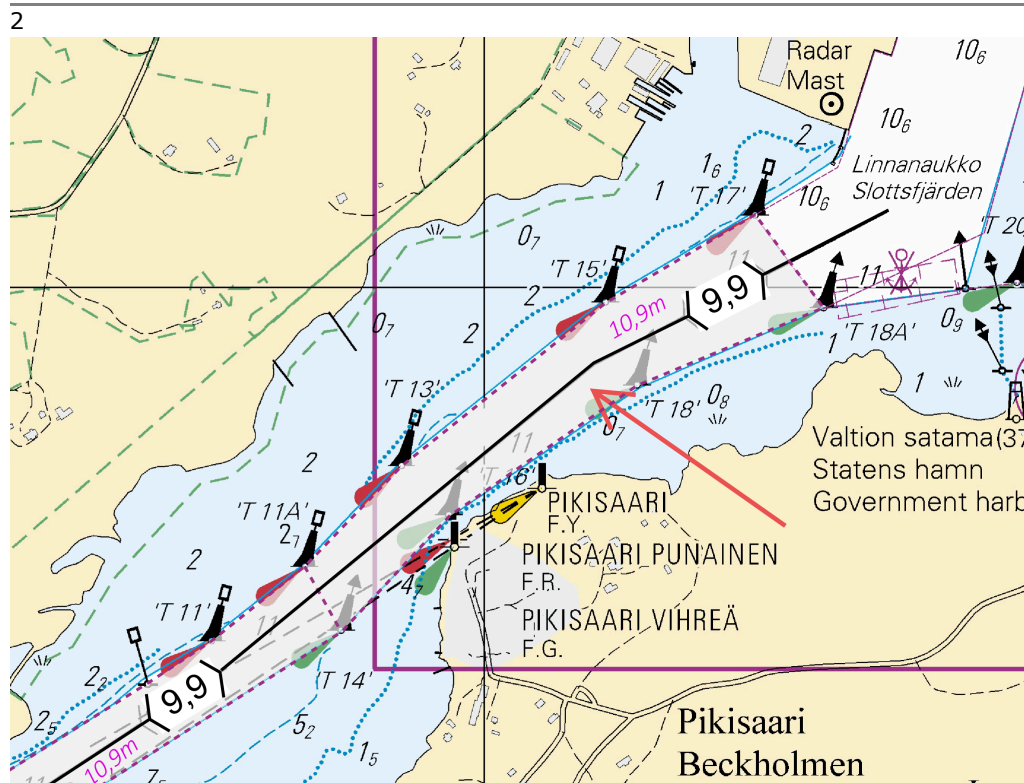


Image for reference, chart extracts not to scale of chart.

(Traficom, Helsinki/Helsingfors 2025)


\*70/2025

2025-04-17

Finland. Archipelago Sea. Kimitoön. Mjösund. (MSL/MW). Fairway areas

Charts		Previous
23	(INT 1186)	23/2025 <a href="#">↗</a>
25	(INT 1188)	206/2024 <a href="#">↗</a>
B649, B650		47/2025 <a href="#">↗</a>
D703, D704		69/2025 <a href="#">↗</a>

References:145/2016

1	23, 25, B649, B650, D703, D704
Add	
	Fairway area edge line between positions:
(1)	60°10.143'N 22°22.371'E
(2)	60°10.257'N 22°22.753'E
(3)	60°10.050'N 22°23.430'E
(4)	60°11.076'N 22°24.588'E
(5)	60°11.331'N 22°24.785'E
(6)	60°11.961'N 22°26.525'E
(7)	60°12.274'N 22°27.568'E
(8)	60°12.430'N 22°27.382'E
(9)	60°12.218'N 22°26.459'E
(10)	60°12.010'N 22°25.324'E
(11)	60°11.570'N 22°24.539'E
(12)	60°10.143'N 22°22.371'E

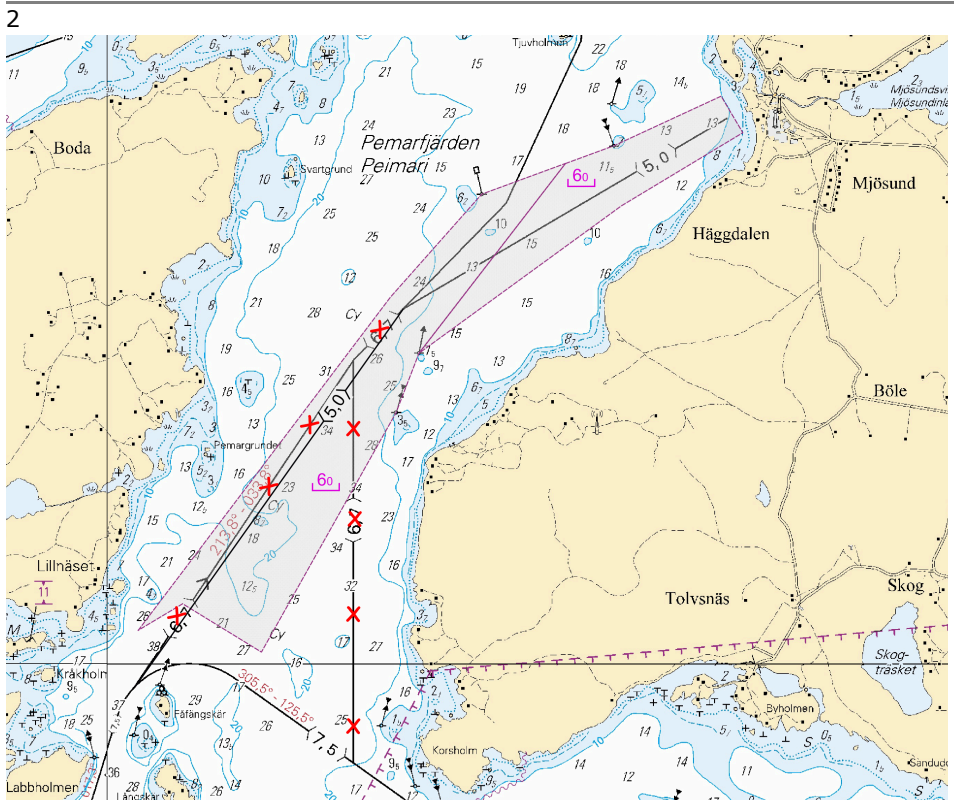


Image for reference, chart extracts not to scale of chart.

(Traficom, Helsinki/Helsingfors 2025)





# Bothnian Sea

\*71/2025

2025-04-17

Finland. Bothnian Sea. Rauma. Partiokari. Depths

Charts		Previous
41	(INT 1132)	62/2025 <a href="#">↗</a>
127	(INT 11321)	37/2025 <a href="#">↗</a>
805, 805.A		62/2025 <a href="#">↗</a>

1  
Add **T** 41, 127, 805, 805.A Correct 3 m depth contour 61°08.929'N 21°25.149'E

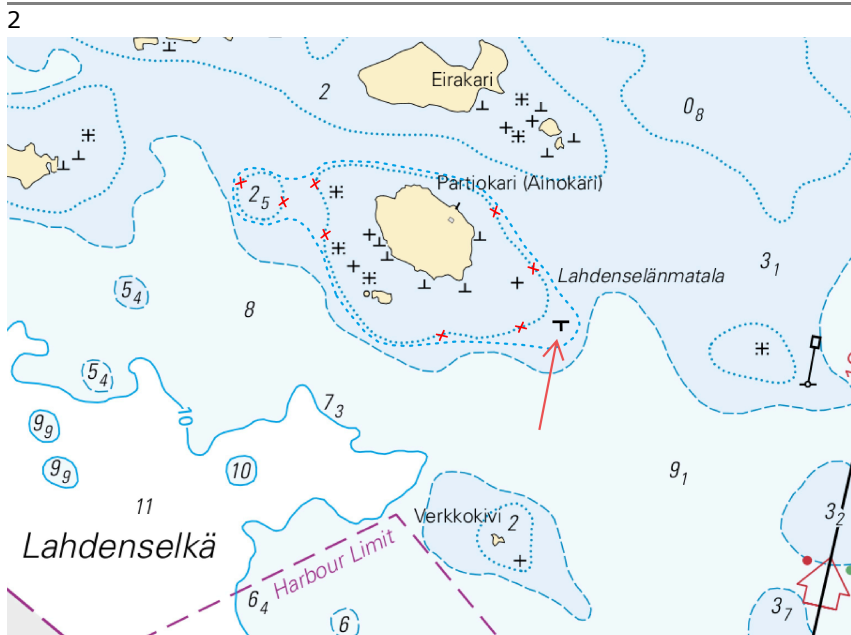


Image for reference, chart extracts not to scale of chart.

(Traficom, Helsinki/Helsingfors 2025)

# Vuoksi watercourse

\*72(T)/2025

2025-04-17

Finland. Vuoksi watercourse. Varkaus. Kortesaaret. Buoyage

## Charts

M228, M228.1

## Previous

51/2025 [↗](#)


Time: Until further notice

---

1  
The lights of the leading beacons are inoperative during the repair work.


---

2 M228, M228.1

Amend		Front			
	KORTESAARI E		62°11.346'N	28°31.632'E	14366
	VQ(2)W.3s				
	(exting)				

---

3 M228, M228.1

Amend		Rear			
	KORTESAARI E		62°11.416'N	28°31.511'E	14367
	VQ(2)W.3s				
	(exting)				

(Traficom, Helsinki/Helsingfors 2025)

---

---

# Announcements

\*73/2025

2025-04-17

Finland. Global navigation satellite systems disturbance. Notice repeated.

**Charts**

**Previous**

References:1/2025 [↗](#)

---

1

GNSS interference in waterborne transport

GNSS interference in the Gulf of Finland began at the end of April, and signal disruptions are still observed in waterborne transport. Reports of interference have been particularly frequent in the eastern parts of the Gulf of Finland.

Interference affects the reliability of positioning by disrupting GNSS reception. When interference occurs, mariners cannot fully trust widely used GNSS-based navigation systems but have to rely on back-up systems instead.

If interference remains undetected, the risks caused by positioning errors increase, particularly in the narrow channels in the archipelago and in poor visibility. Interference is easier to detect when radar and electronic navigational charts are used simultaneously with radar image overlaid on the chart. The skills and professional competence of the crew are highlighted in the event of GNSS issues. If GNSS positioning data is lost, nautical charts, compasses and radars can still be used for navigation.

Fintraffic Vessel Traffic Services (VTS) have updated their instructions on how to operate in the event of GNSS interference. The VTS centre supports ships and gives ships arriving in the VTS area all the information they need for safe navigation, including information about any GNSS issues.

The Finnish Transport and Communications Agency Traficom's website includes a situational picture of interference in satellite navigation services in Finland.

<https://tieto.traficom.fi/en/statistics/satellite-navigation-service-interference-finland>

Any radio interference observed at sea should always be reported to Traficom:

<https://traficom.fi/en/notifications-radio-interference>

(Traficom, Helsinki/Helsingfors 2025)

---

---

# Current Preliminary (P) and Temporary (T) notices (17.04.2025)

## Gulf of Finland

T&P	Charts	Gulf of Finland
174(T)/2019 <a href="#">↗</a>	951	SE of Bol'soj Tjuters. Obstructions
296(T)/2020 <a href="#">↗</a>	17, 18, 191, 952, A, B	Helsinki. Sipoo. Areas and borders
20(T)/2021 <a href="#">↗</a>	951, A	TSS OFF ROOSHER ISLAND. Lighthouse Rodser extinguished. Notice repeated. Buoyage
228(T)/2021 <a href="#">↗</a>	951, A	Krestovyy. Lighthouse Krestovyy extinguished. Notice repeated. Buoyage
304(T)/2021 <a href="#">↗</a>	18, 192, A, B	Helsinki. Vuosaari. Notice repeated. Buoyage. Areas and borders
65(T)/2022 <a href="#">↗</a>	A, S	Vyborg. Destroyed leading beacon. Notice repeated. Buoyage
66(T)/2022 <a href="#">↗</a>	A, S	Vyborg. Light extinguished. Notice repeated. Buoyage
86(T)/2022 <a href="#">↗</a>	18, 191, 952, A, B	Helsinki. Kruunuvuori. Restrictions on small craft traffic. Fairways
90(T)/2022 <a href="#">↗</a>	951	Tiskolovo. Lighthouse Kajbolovo. Buoyage
229(T)/2023 <a href="#">↗</a>	18, 191, A, B	Helsinki. Hernesaari. Buoyage
230(T)/2023 <a href="#">↗</a>	18, 191, A, B	Helsinki. Hernesaari. Buoyage. Areas and borders
194(T)/2024 <a href="#">↗</a>	18, 191, A, B	Helsinki. Sompasaari. Buoyage
230(T)/2024 <a href="#">↗</a>	18, 191, A, B	Helsinki. Melkki. Light Melkki extinguished. Buoyage
238(T)/2024 <a href="#">↗</a>	17, 952, A	Off Porvoo. Lighthouse Porvoon majakka unlit. Buoyage
284(T)/2024 <a href="#">↗</a>	18, 191, A, B	Helsinki. Hakaniemi. Bridge construction work. Areas and borders

## Archipelago Sea

T&P	Charts	Archipelago Sea
189(T)/2023 <a href="#">↗</a>	26, D	Pargas. Kirjala...Restrictions on traffic. Areas and borders
40(T)/2024 <a href="#">↗</a>	26, 190, D	Naantali. Raumakari. Särkäsalmi. Kirkonsalmi. Notice repeated. Buoyage
130(T)/2024 <a href="#">↗</a>	27, D	Pargas. S of Utö. ODAS buoy. Buoyage
168(T)/2024 <a href="#">↗</a>	25, 26, 37, D	Pargas. Seili. ODAS buoy. Buoyage
239(T)/2024 <a href="#">↗</a>	27, 167, D	S of Utö. Söderdjupet. Measuring equipment on seabed. Areas and borders
250(T)/2024 <a href="#">↗</a>	26, D	Pargas. Hessund...Restrictions on traffic. Areas and borders
267(T)/2024 <a href="#">↗</a>	26, 190, D	Port of Turku. Construction works. Areas and borders

## Aland Sea

T&P	Charts	Aland Sea
97(T)/2024 <a href="#">↗</a>	32, 160, C	Mariehamn. Lemströms canal...Restrictions on traffic. Areas and borders
155(T)/2024 <a href="#">↗</a>	31, 935, C	TSS SOUTH ÅLAND SEA. Light Flötjan extinguished. Buoyage

## Bothnian Sea

T&P	Charts	Bothnian Sea
121(T)/2024 <a href="#">↗</a>	45, 46, 815, 816	Korsnäs. Measuring equipment on seabed. Obstructions
6(T)/2025 <a href="#">↗</a>	42, 125	Pori. Tahkoluoto. Notice repeated. Buoyage

## The Quark

T&P	Charts	The Quark
238(T)/2022 <a href="#">↗</a>	48, 115, 921, F, M	Vaasa. Vaskiluoto. Notice repeated. Buoyage
126(T)/2023 <a href="#">↗</a>	48, 115, 820	Vaasa. Vaskiluoto. Dredging operations. Areas and borders
256(T)/2023 <a href="#">↗</a>	48, 115, 820	Vaasa. Vaskiluoto. Dredging operations. Notice repeated. Areas and borders
247(T)/2024 <a href="#">↗</a>	48, 820, 956, 957	Vaasa. Johansson. Buoyage
262(T)/2024 <a href="#">↗</a>	48, 115, 820	Vaasa. Vaskiluoto. ( N2000 ) (BSCD2000). Buoyage. Fairway areas
279(T)/2024 <a href="#">↗</a>	48, 115, 820, 957, 8061, 8065	Vaasa. Vaskiluoto. Buoyage. Fairway areas
16(T)/2025 <a href="#">↗</a>	47, 825, 956, 957, 8065	Buoyage reinstated after the winter season. Buoyage

## Bay of Bothnia

T&P	Charts	Bay of Bothnia
145(T)/2024 <a href="#">↗</a>	57, 846, 958, 8071	Hailuoto. Bridge construction work. Areas and borders
164(T)/2024 <a href="#">↗</a>	57, 119, 846	Oulu. Pikisaari. Fairways
197(T)/2024 <a href="#">↗</a>	57, 119, 845, 846	Oulu. Port of Oulu. Dredging operations. Areas and borders
270(T)/2024 <a href="#">↗</a>	57, 846	Hailuoto. Channel section closed for the winter season. Areas and borders
3(T)/2025 <a href="#">↗</a>	57, 60, 848, 958	Off Oulu. SW of Lighthouse Oulu 1. Lost buoy. Virtual AIS. Buoyage
7(T)/2025 <a href="#">↗</a>	60	Kemi. NE of Lighthouse Kemi 1...Winter break. Areas and borders
49(T)/2025 <a href="#">↗</a>	57, 119, 845, 846	Port of Oulu. ( N2000 ) (BSCD2000)...Depths. Fairways. Fairway areas

## Vuoksi watercourse

T&P	Charts	Vuoksi watercourse
214(T)/2020 <a href="#">↗</a>		Leppävirta. Hyvärilä. Buoyage
64(T)/2025 <a href="#">↗</a>	L	Lappeenranta. Muukonsaari. Buoyage
72(T)/2025 <a href="#">↗</a>	M	Varkaus. Kortesaaret. Buoyage

## Kymijoki watercourse

T&P	Charts	Kymijoki watercourse
-	-	

## Kokemäijoki watercourse

T&P	Charts	Kokemäijoki watercourse
-	-	

## Oulujoki watercourse

T&P	Charts	Oulujoki watercourse
-	-	

## Paatsjoki watercourse

T&P	Charts	Paatsjoki watercourse
-	-	

## Saimaa Canal

T&P	Charts	Saimaa Canal
254(T)/2024 <a href="#">↗</a>		Saimaa Canal closed for the winter season.

## Northern Baltic

T&P	Charts	Northern Baltic
11(T)/2024 <a href="#">↗</a>	952, 953, 954	Hiiumaa. Tahkuna. Light Lehtma extinguished. Buoyage

## Announcements

T&P	Charts	Announcements
137(T)/2023 <a href="#">↗</a>		Helsinki. Korkeasaari...Restrictions on small craft traffic
102(T)/2024 <a href="#">↗</a>		Pargas. Hessund. Bridge construction work.