



# Notices to Mariners

## NtM 13/2025

Notices: 93 - 102 / 10.05.2025



# Table of Contents

Title	Page
Index by Area	2
Index by Chart	3
Archipelago Sea	4
Aland Sea	6
The Quark	8
Bay of Bothnia	9
Kymijoki watercourse	12
Current Preliminary (P) and Temporary (T) notices (09.05.2025)	14

# Index by Area

## Archipelago Sea

### Charts

*93/2025	26, D
*94/2025	28, C, D
*95/2025	26, 190, D

## Aland Sea

### Charts

*96(T)/2025	31, C
*97(T)/2025	32, 160, C

## The Quark

### Charts

*98/2025	44, 113, 813, 956
----------	-------------------

## Bay of Bothnia

### Charts

*99(T)/2025	52, 53, 834, 835, 957, 958
*100/2025	57, 119, 845, 846

## Kymijoki watercourse

### Charts

*101/2025	321
*102/2025	320, 321

# Index by Chart

<b>Charts</b>	<b>Notices</b>
26	*93/2025, *95/2025
28	*94/2025
31	*96(T)/2025
32	*97(T)/2025
44	*98/2025
52	*99(T)/2025
53	*99(T)/2025
57	*100/2025
113	*98/2025
119	*100/2025
160	*97(T)/2025
190	*95/2025
320	*102/2025
321	*101/2025, *102/2025
813	*98/2025
834	*99(T)/2025
835	*99(T)/2025
845	*100/2025
846	*100/2025
956	*98/2025
957	*99(T)/2025
958	*99(T)/2025
C	*94/2025, *96(T)/2025, *97(T)/2025
D	*93/2025, *94/2025, *95/2025

# Archipelago Sea

\*93/2025

2025-05-06

Finland. Archipelago Sea. Pargas. Hessund. Channel section opened to vessel traffic. Areas and borders

Charts		Previous
26	(INT 1189)	75/2025 <a href="#">↗</a>
D705		75/2025 <a href="#">↗</a>

References: 102(T)/2024 [↗](#)

Cancelled: 250(T)/2024 [↗](#)

---

1	26, D705		
Delete	Traffic restrictions	60°19.412'N	22°20.626'E

---

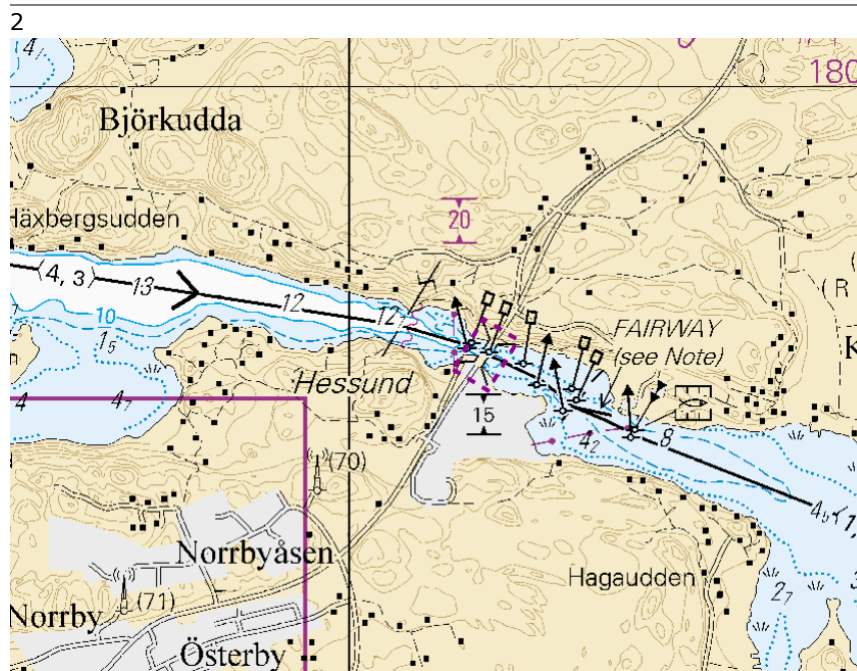


Image for reference, chart extracts not to scale of chart.

(Traficom, Helsinki/Helsingfors 2025)

---

---

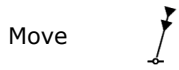
\*94/2025

2025-05-08

Finland. Archipelago Sea. Kökar. Örlandet. Buoyage

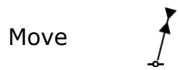
Charts	Previous
28 (INT 1191)	26/2025 <a href="#">↗</a>
C730, C740, C741	36/2025 <a href="#">↗</a>
D730	93/2025 <a href="#">↗</a>

1 28, C730, D730



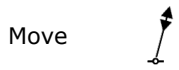
From	To	6810
60°00.207'N 21°02.320'E	60°00.223'N 21°02.266'E	

2 28, C740, C741



From	To	6809
60°01.495'N 20°58.158'E	60°01.488'N 20°58.175'E	

3 28, C740



From	To	6808
60°02.792'N 20°53.796'E	60°02.870'N 20°53.682'E	

(Traficom, Helsinki/Helsingfors 2025)

\*95/2025

2025-05-08

Finland. Archipelago Sea. Turku. Samppansuntti. Buoyage

Charts	Previous
26 (INT 1189)	93/2025 <a href="#">↗</a>
190 (INT 1158)	69/2025 <a href="#">↗</a>
D706	94/2025 <a href="#">↗</a>

1 26, 190, D706



60°22.974'N 22°08.470'E 88955



Image for reference, chart extracts not to scale of chart.

(Traficom, Helsinki/Helsingfors 2025)

# Aland Sea

\*96(T)/2025

2025-05-08

Finland. Aland Sea. TSS SOUTH ÅLAND SEA. Light Flötjan extinguished. Notice repeated. Buoyage

Charts		Previous
31	(INT 1194)	/
C755		94/2025 <a href="#">↗</a>

Time: Until further notice

Cancelled: 155(T)/2024 [↗](#)

---

1  
The light and racon of the lighthouse are inoperative during the repair work.

---

2 31

Amend



FLÖTJAN  
FI(2)W.20s  
(exting)  
Racon (T) (not  
in use)

59°48.50'N 19°46.93'E 6345, (C4482)

(Traficom, Helsinki/Helsingfors 2025)

---

---

\*97(T)/2025

2025-05-08

Finland. Aland Sea. Mariehamn. Lemströms canal. Bridge construction work. Restrictions on traffic. Notice repeated. Areas and borders

Charts		Previous
32	(INT 1195)	/
160	(INT 1156)	/
C753, C756, C756.1, C757		96/2025 <a href="#">↗</a>

Time: to approx. 30 June 2025

Cancelled: 97(T)/2024 [↗](#)

---

1  
Bridge repair work underway in Lemströms canal. The channel (2.5m) under the bridge is at times closed and no swing bridge to open during the construction period. The works are expected to be completed by the end of June 2025. Further [details below](#):

---

- 2
1. Between 6 May – 31 May 2024 the canal is closed to boat traffic.
  2. Between 1 June – 19 June 2024 the canal is open to boat traffic without a bridge opening.
  3. Between 20 June – 4 August 2024 the canal is open to boat traffic and bridge opening will take place every hour between 09:00am – 22:00pm local time.
  4. Between 5 August – 1 September 2024 the canal is open to boat traffic without a bridge opening.
  5. Between 2 September – 30 April 2025 the canal is closed to boat traffic.

6. Between 1 May – 4 June 2025 the canal is open to boat traffic without a bridge opening.

<https://www.regeringen.ax/infrastruktur-kommunikationer/aktuella-infrastrukturprojekt/pagaende-entreprenader/lemstroms-kanalbro>

3 32, 160

Add Traffic restrictions

60°05.80'N 20°00.94'E

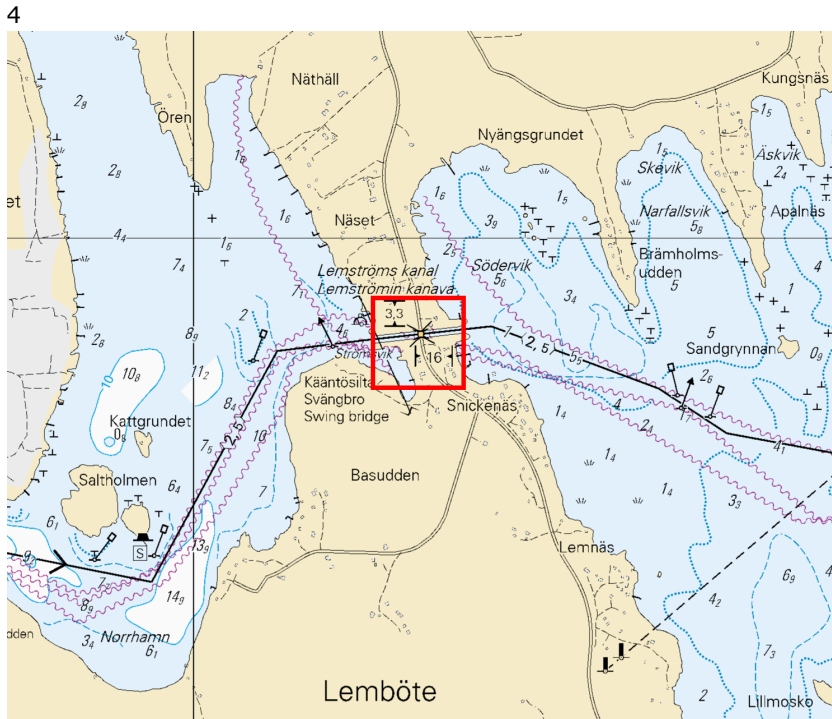


Image for reference, chart extracts not to scale of chart.

(Traficom, Helsinki/Helsingfors 2025)

# The Quark

\*98/2025


2025-05-08

Finland. The Quark. Kaskinen. Obstructions. Areas and borders


## Charts

		Previous
44	(INT 1135)	213/2024 <a href="#">↗</a>
113.C	(INT 11351)	252/2024 <a href="#">↗</a>
813, 813.B		213/2024 <a href="#">↗</a>
956		82/2025 <a href="#">↗</a>


---

1	44, 813, 956		
Add		Between the following positions:	
		(1)	62°17.340'N 21°04.590'E
		(2)	62°17.225'N 21°05.067'E
		(3)	62°16.902'N 21°04.698'E
		(4)	62°17.020'N 21°04.209'E


---

2	44, 113.C, 813, 813.B		
Add			62°20.827'N 21°12.467'E

---

3	44, 113.C, 813, 813.B		
Add			62°20.585'N 21°12.740'E

---

4	44, 113.C, 813, 813.B		
Add			62°20.482'N 21°13.266'E

(Traficom, Helsinki/Helsingfors 2025)

---

---

# Bay of Bothnia

\*99(T)/2025

2025-05-08

Finland. Bay of Bothnia. Kokkola. Lohtaja. Firing exercise. Areas and borders

Charts		Previous
52	(INT 1143)	277/2024 <a href="#">↗</a>
53	(INT 1144)	231/2024 <a href="#">↗</a>
834		277/2024 <a href="#">↗</a>
835		231/2024 <a href="#">↗</a>
957	(INT 1208)	82/2025 <a href="#">↗</a>
958	(INT 1209)	63/2025 <a href="#">↗</a>

Time: From 14 May 2025, 07.00 hours to 17 May 2025, 24.00 hours local Finnish time, around the clock

1

Firing exercise in week 20 in the Lohtaja area. The danger area extends to the sea area.

Mariners in the area are requested to monitor the navigational warnings and radio communications with great attention.

Enquiries: phone 358 299 442191. <https://puolustusvoimat.fi/en/current-issues/firings-and-noise>

2

52, 53, 834, 835, 957, 958



Danger area

- |     |            |            |
|-----|------------|------------|
| (1) | 63°57.72'N | 23°17.39'E |
| (2) | 63°56.20'N | 22°28.99'E |
| (3) | 64°05.31'N | 22°26.41'E |
| (4) | 64°15.87'N | 22°33.89'E |
| (5) | 64°24.24'N | 22°52.07'E |
| (6) | 64°12.07'N | 23°24.01'E |
| (7) | 64°10.23'N | 23°26.28'E |
| (8) | 63°57.72'N | 23°17.39'E |

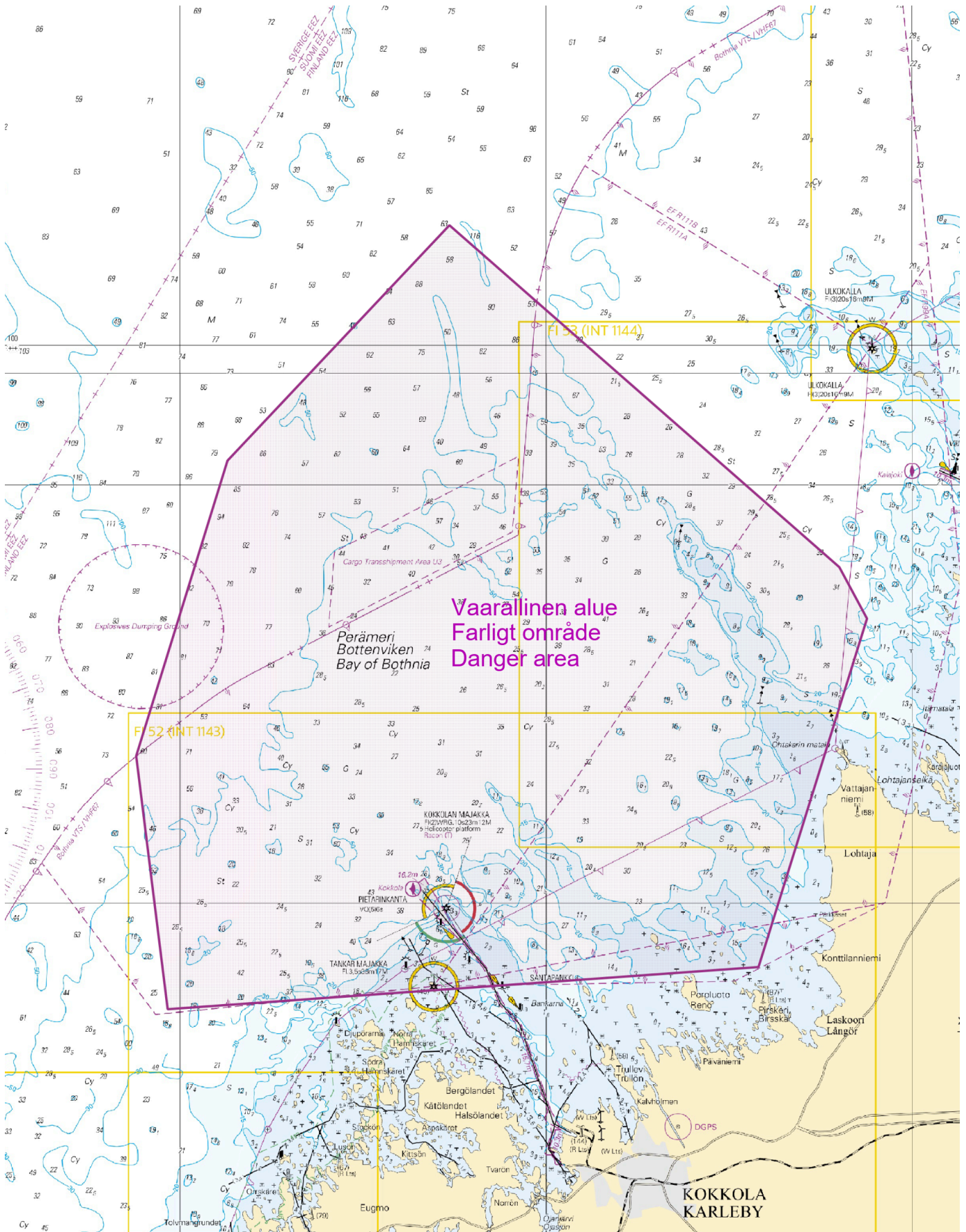


Image for reference, chart extracts not to scale of chart.

(Puolustusvoimat/Försvarsmakten/The Finnish Defence Forces 2025)

\*100/2025

2025-05-08

Finland. Bay of Bothnia. Oulu. Port of Oulu. Operations completed. Areas and borders

Charts		Previous
57	(INT 1148)	83/2025 <a href="#">↗</a>
119.B	(INT 11461)	49/2025 <a href="#">↗</a>
845		49/2025 <a href="#">↗</a>
846, 846.A		83/2025 <a href="#">↗</a>

Cancelled: 197(T)/2024 [↗](#)

1	57, 119.B, 845, 846, 846.A			
Delete		Dredging operations between:	(1) 65°00.11'N 25°24.18'E	
			(2) 65°00.13'N 25°24.82'E	

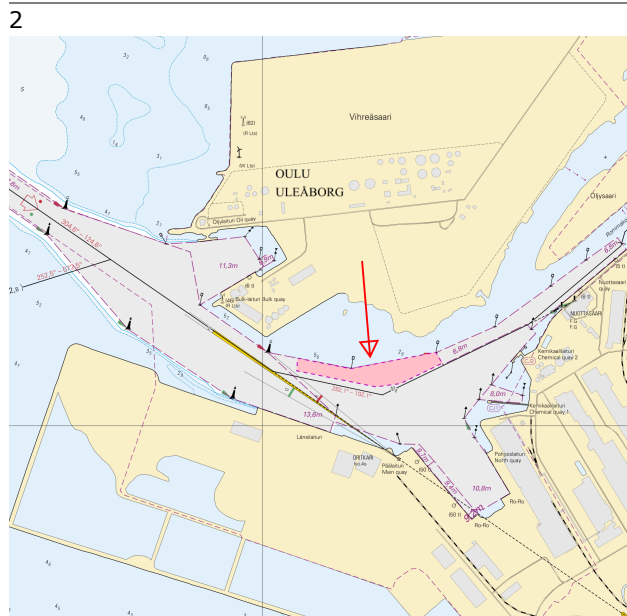


Image for reference, chart extracts not to scale of chart.

(Oulun Satama Oy – Port of Oulu, 2025)

# Kymijoki watercourse

\*101/2025

2025-05-08

Finland. Kymijoki watercourse. Jyväskylä. Kärkistensalmi. Buoyage

**Charts**

321, 321.B

**Previous**

/

1		321, 321.B			
Delete	↓	Front	62°00.006'N	25°38.786'E	30987
2		321, 321.B			
Delete	↓	Rear	62°00.005'N	25°38.756'E	30988
3		321, 321.B			
Delete	— — — —	Leading line between the following positions:	(1) 62°00.005'N	25°38.756'E	
			(2) 62°00.016'N	25°39.078'E	

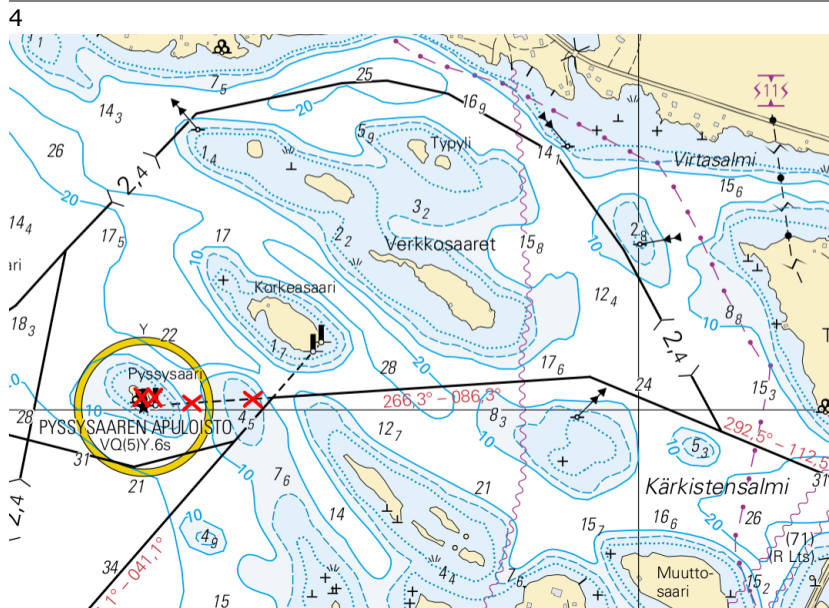


Image for reference, chart extracts not to scale of chart.

(Traficom, Helsinki/Helsingfors 2025)

\*102/2025

2025-05-08

Finland. Kymijoki watercourse. Jyväskylä. Kiviönniemi. Buoyage

**Charts**

**Previous**

320

/

321

101/2025 [↗](#)

1		321			
Delete	↓	Front	61°58.1829'N	25°36.6527'E	48913

2		321			
Delete	↓	Rear	61°58.375'N	25°36.819'E	48914

3		320, 321			
Delete	— — — —	Leading line between the following positions:	(1) 61°58.375'N	25°36.819'E	
			(2) 61°57.034'N	25°35.652'E	



Image for reference, chart extracts not to scale of chart.

(Traficom, Helsinki/Helsingfors 2025)

# Current Preliminary (P) and Temporary (T) notices (09.05.2025)

## Gulf of Finland

<b>T&amp;P</b>	<b>Charts</b>	<b>Gulf of Finland</b>
174(T)/2019 <a href="#">↗</a>	951	SE of Bol'soj Tjuters. Obstructions
296(T)/2020 <a href="#">↗</a>	17, 18, 191, 952, A, B	Helsinki. Sipoo. Areas and borders
20(T)/2021 <a href="#">↗</a>	951, A	TSS OFF ROOSHER ISLAND. Lighthouse Rodser extinguished. Notice repeated. Buoyage
228(T)/2021 <a href="#">↗</a>	951, A	Krestovyy. Lighthouse Krestovyy extinguished. Notice repeated. Buoyage
304(T)/2021 <a href="#">↗</a>	18, 192, A, B	Helsinki. Vuosaari. Notice repeated. Buoyage. Areas and borders
65(T)/2022 <a href="#">↗</a>	A, S	Vyborg. Destroyed leading beacon. Notice repeated. Buoyage
66(T)/2022 <a href="#">↗</a>	A, S	Vyborg. Light extinguished. Notice repeated. Buoyage
86(T)/2022 <a href="#">↗</a>	18, 191, 952, A, B	Helsinki. Kruunuvuori. Restrictions on small craft traffic. Fairways
90(T)/2022 <a href="#">↗</a>	951	Tiskolovo. Lighthouse Kajbolovo. Buoyage
229(T)/2023 <a href="#">↗</a>	18, 191, A, B	Helsinki. Hernesaari. Buoyage
230(T)/2023 <a href="#">↗</a>	18, 191, A, B	Helsinki. Hernesaari. Buoyage. Areas and borders
194(T)/2024 <a href="#">↗</a>	18, 191, A, B	Helsinki. Sompasaari. Buoyage
238(T)/2024 <a href="#">↗</a>	17, 952, A	Off Porvoo. Lighthouse Porvoon majakka unlit. Buoyage
78(T)/2025 <a href="#">↗</a>	15, 16	Loviisa. SE of Lighthouse Tiiskeri. ODAS spar buoy. Buoyage

## Archipelago Sea

<b>T&amp;P</b>	<b>Charts</b>	<b>Archipelago Sea</b>
189(T)/2023 <a href="#">↗</a>	26, D	Pargas. Kirjala...Restrictions on traffic. Areas and borders
40(T)/2024 <a href="#">↗</a>	26, 190, D	Naantali. Raumakari. Särkänalmi. Kirkonsalmi. Notice repeated. Buoyage
130(T)/2024 <a href="#">↗</a>	27, D	Pargas. S of Utö. ODAS buoy. Buoyage
168(T)/2024 <a href="#">↗</a>	25, 26, 37, D	Pargas. Seili. ODAS buoy. Buoyage
239(T)/2024 <a href="#">↗</a>	27, 167, D	S of Utö. Söderdjupet. Measuring equipment on seabed. Areas and borders
267(T)/2024 <a href="#">↗</a>	26, 190, D	Port of Turku. Construction works. Areas and borders

## Aland Sea

T&P	Charts	Aland Sea
96(T)/2025 <a href="#">↗</a>	31, C	TSS SOUTH ÅLAND SEA. Light Flötjan extinguished. Notice repeated. Buoyage
97(T)/2025 <a href="#">↗</a>	32, 160, C	Mariehamn. Lemströms canal...Notice repeated. Areas and borders

## Bothnian Sea

T&P	Charts	Bothnian Sea
121(T)/2024 <a href="#">↗</a>	45, 46, 815, 816	Korsnäs. Measuring equipment on seabed. Obstructions
6(T)/2025 <a href="#">↗</a>	42, 125	Pori. Tahkoluoto. Notice repeated. Buoyage
80(T)/2025 <a href="#">↗</a>	41, 42, 805, 807, 808, 955	Off Pori and Rauma. MAINI firing exercises. Areas and borders

## The Quark

T&P	Charts	The Quark
238(T)/2022 <a href="#">↗</a>	48, 115, 921, F, M	Vaasa. Vaskiluoto. Notice repeated. Buoyage
247(T)/2024 <a href="#">↗</a>	48, 820, 956, 957	Vaasa. Johansson. Buoyage
262(T)/2024 <a href="#">↗</a>	48, 115, 820	Vaasa. Vaskiluoto. ( N2000 ) (BSCD2000). Buoyage. Fairway areas
279(T)/2024 <a href="#">↗</a>	48, 115, 820, 957, 8061, 8065	Vaasa. Vaskiluoto. Buoyage. Fairway areas
16(T)/2025 <a href="#">↗</a>	47, 825, 956, 957, 8065	Buoyage reinstated after the winter season. Buoyage
79(T)/2025 <a href="#">↗</a>	48, 115, 820, 956, 957	Vaasa. Dredging operations. Areas and borders

## Bay of Bothnia

T&P	Charts	Bay of Bothnia
145(T)/2024 <a href="#">↗</a>	57, 846, 958, 8071	Hailuoto. Bridge construction work. Areas and borders
164(T)/2024 <a href="#">↗</a>	57, 119, 846	Oulu. Pikisaari. Fairways
3(T)/2025 <a href="#">↗</a>	57, 60, 848, 958	Off Oulu. SW of Lighthouse Oulu 1. Lost buoy. Virtual AIS. Buoyage
7(T)/2025 <a href="#">↗</a>	60	Kemi. NE of Lighthouse Kemi 1...Winter break. Areas and borders
49(T)/2025 <a href="#">↗</a>	57, 119, 845, 846	Port of Oulu. ( N2000 ) (BSCD2000)...Depths. Fairways. Fairway areas
83(T)/2025 <a href="#">↗</a>	57, 846	Hailuoto. Boating passages at the Riutunkari and Huikku bridges.
99(T)/2025 <a href="#">↗</a>	52, 53, 834, 835, 957, 958	Kokkola. Lohtaja. Firing exercise. Areas and borders

## Vuoksi watercourse

T&P	Charts	Vuoksi watercourse
214(T)/2020 <a href="#">↗</a>		Leppävirta. Hyvärilä. Buoyage
64(T)/2025 <a href="#">↗</a>	L	Lappeenranta. Muukonsaari. Buoyage
72(T)/2025 <a href="#">↗</a>	M	Varkaus. Kortesaaret. Buoyage

## Kymijoki watercourse

T&P	Charts	Kymijoki watercourse
-	-	

## Kokemäijoki watercourse

T&P	Charts	Kokemäijoki watercourse
-	-	

## Oulujoki watercourse

T&P	Charts	Oulujoki watercourse
-	-	

## Paatsjoki watercourse

T&P	Charts	Paatsjoki watercourse
-	-	

## Saimaa Canal

T&P	Charts	Saimaa Canal
254(T)/2024 <a href="#">↗</a>		Saimaa Canal closed for the winter season.

## Northern Baltic

T&P	Charts	Northern Baltic
11(T)/2024 <a href="#">↗</a>	952, 953, 954	Hiiumaa. Tahkuna. Light Lehtma extinguished. Buoyage

## Announcements

T&P	Charts	Announcements
137(T)/2023 <a href="#">↗</a>		Helsinki. Korkeasaari...Restrictions on small craft traffic
102(T)/2024 <a href="#">↗</a>		Pargas. Hessund. Bridge construction work.
86(T)/2025 <a href="#">↗</a>		Helsinki. Hevossalmi.