



# Notices to Mariners

## NtM 16/2025

Notices: 129 - 139 / 10.06.2025



# Table of Contents

Title	Page
Index by Area	2
Index by Chart	3
Gulf of Finland	4
Archipelago Sea	6
Åland Sea	19
Bay of Bothnia	20
Current Preliminary (P) and Temporary (T) notices (10.06.2025)	25

# Index by Area

## Gulf of Finland

### Charts

129(T)/2025	952, A, B
*130(T)/2025	18, 191, A, B

## Archipelago Sea

### Charts

*132/2025	23, B
*133/2025	23, 952, 953, 954, B
*134/2025	27, 167, C, D
*135/2025	24, 25, 952, 953, 954, D
*139/2025	21, B

## Aland Sea

### Charts

*131/2025	31
-----------	----

## Bay of Bothnia

### Charts

*136/2025	60, 958
*137/2025	57, 119, 845, 846
*138/2025	60, 958

# Index by Chart

<b>Charts</b>	<b>Notices</b>
18	*130(T)/2025
21	*139/2025
23	*132/2025, *133/2025
24	*135/2025
25	*135/2025
27	*134/2025
31	*131/2025
57	*137/2025
60	*136/2025, *138/2025
119	*137/2025
167	*134/2025
191	*130(T)/2025
845	*137/2025
846	*137/2025
952	129(T)/2025, *133/2025, *135/2025
953	*133/2025, *135/2025
954	*133/2025, *135/2025
958	*136/2025, *138/2025
A	129(T)/2025, *130(T)/2025
B	129(T)/2025, *130(T)/2025, *132/2025, *133/2025, *139/2025
C	*134/2025
D	*134/2025, *135/2025

# Gulf of Finland

129(T)/2025

2025-06-09

Estonia. Gulf of Finland. Off Tallinn. Lighthouse Vahemadal extinguished. Buoyage

Charts	Previous
952	128/2025 <a href="#">↗</a>
A/Helsinki - Tallinna	128/2025 <a href="#">↗</a>
B/Helsinki - Tallinn	128/2025 <a href="#">↗</a>

Time: Until further notice

1  
The light of the lighthouse is inoperative during the repair work.

2 952, A/Helsinki - Tallinna, B/Helsinki - Tallinn

Amend



VAHEMADAL  
Fl.R.10s.2/6M  
(exting)

59°30.61'N 24°39.97'E

(NtM 06/83(T), Tallinn 2025)

\*130(T)/2025


2025-06-09


Finland. Gulf of Finland. Helsinki. Hernesaari. Notice repeated. Buoyage

Charts	Previous
18	(INT 1250) 118/2025 <a href="#">↗</a>
191	(INT 1159) 77/2025 <a href="#">↗</a>
A626, A626.1	129/2025 <a href="#">↗</a>
B626, B626.1	129/2025 <a href="#">↗</a>


Time: Until further notice

Cancelled: 229(T)/2023 [↗](#)


1 18, 191, A626, A626.1, B626, B626.1  
Delete  60°08.707'N 24°55.746'E 86258

2 18, 191, A626, A626.1, B626, B626.1  
Add  60°08.733'N 24°55.930'E 86257

---

3		18, 191, A626, A626.1, B626, B626.1			
Add			60°08.955'N	24°55.818'E	86255

---

4		18, 191, A626, A626.1, B626, B626.1			
Add			60°08.884'N	24°55.857'E	86256

(Helsingin kaupunki, Helsingfors stad 2025)

---

---

# Archipelago Sea

\*132/2025


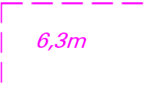
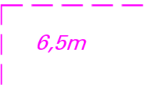
2025-06-09

Finland. Archipelago Sea. Kimitoön. Grunni. Strömma. Matilda. (MSL/MW).  
Fairway areas

Charts		Previous
23, 23.B, 23.C	(INT 1186)	74/2025 <a href="#">↗</a>
B641, B641.4, B642, B643		130/2025 <a href="#">↗</a>

References:331/2016

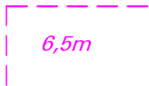
---

1			
Reference:NtM 32/354/2014			
2	23, 23.B, B641		
Add 		(1) 60°06.357'N 22°51.461'E	
		(2) 60°06.783'N 22°52.032'E	
		(3) 60°07.044'N 22°52.944'E	
		(4) 60°07.553'N 22°53.471'E	
		(5) 60°07.538'N 22°53.538'E	
		(6) 60°06.998'N 22°53.043'E	
		(7) 60°06.736'N 22°52.129'E	
		(8) 60°06.340'N 22°51.787'E	
		(9) 60°06.357'N 22°51.461'E	
3	23, B641		
Add 		(1) 60°07.686'N 22°53.701'E	
		(2) 60°07.593'N 22°53.589'E	
		(3) 60°07.538'N 22°53.538'E	
		(4) 60°07.553'N 22°53.471'E	
		(5) 60°07.602'N 22°53.521'E	
		(6) 60°07.707'N 22°53.616'E	
		(7) 60°07.686'N 22°53.701'E	
4	23, B641		
Add 		(1) 60°09.652'N 22°51.833'E	
		(2) 60°09.679'N 22°51.956'E	
		(3) 60°08.647'N 22°53.610'E	
		(4) 60°07.952'N 22°53.989'E	
		(5) 60°07.686'N 22°53.701'E	
		(6) 60°07.707'N 22°53.616'E	
		(7) 60°07.878'N 22°53.771'E	
		(8) 60°08.046'N 22°53.804'E	
		(9) 60°08.617'N 22°53.491'E	
		(10) 60°09.652'N 22°51.833'E	

5

23, 23.C, B641, B641.4

Add

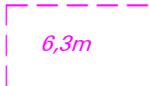


- (1) 60°10.150'N 22°51.792'E
- (2) 60°09.679'N 22°51.956'E
- (3) 60°09.652'N 22°51.833'E
- (4) 60°10.158'N 22°51.658'E
- (5) 60°10.900'N 22°52.240'E
- (6) 60°11.183'N 22°52.175'E
- (7) 60°11.193'N 22°52.199'E
- (8) 60°11.088'N 22°52.526'E
- (9) 60°10.150'N 22°51.792'E

6

23, 23.C, B641, B641.4

Add



- (1) 60°11.183'N 22°52.175'E
- (2) 60°11.259'N 22°52.087'E
- (3) 60°11.280'N 22°52.064'E
- (4) 60°11.285'N 22°52.092'E
- (5) 60°11.268'N 22°52.108'E
- (6) 60°11.245'N 22°52.135'E
- (7) 60°11.193'N 22°52.199'E
- (8) 60°11.183'N 22°52.175'E

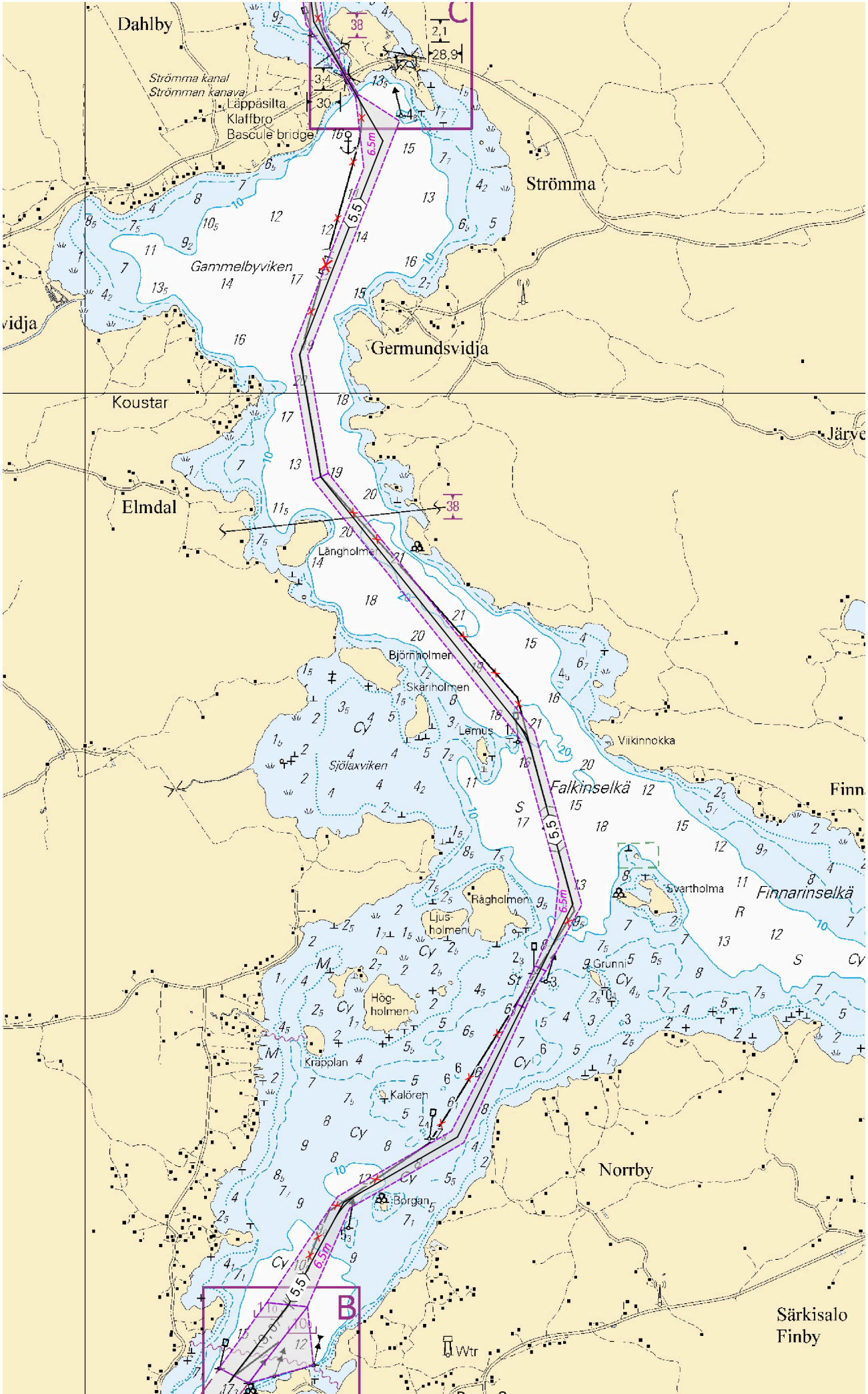

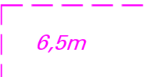
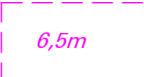
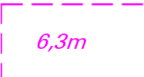
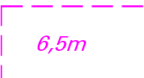


Image for reference, chart extracts not to scale of chart.

8	23, 23.C, B641, B641.4, B642, B643		(1) 60°11.990'N 22°51.645'E
Add 			(2) 60°11.868'N 22°51.807'E
			(3) 60°11.454'N 22°51.923'E
			(4) 60°11.285'N 22°52.092'E
			(5) 60°11.280'N 22°52.064'E
			(6) 60°11.408'N 22°51.876'E
			(7) 60°11.475'N 22°51.777'E
			(8) 60°11.990'N 22°51.645'E
			9
Add 			(2) 60°12.050'N 22°51.913'E
			(3) 60°11.868'N 22°51.807'E
			(4) 60°11.990'N 22°51.645'E
			(5) 60°13.218'N 22°53.733'E
			(6) 60°13.194'N 22°53.797'E
			10
Add 			(2) 60°13.327'N 22°53.901'E
			(3) 60°13.402'N 22°54.009'E
			(4) 60°14.429'N 22°54.253'E
			(5) 60°14.408'N 22°54.378'E
			(6) 60°13.375'N 22°54.134'E
			(7) 60°13.300'N 22°53.991'E
			11
Add 			(2) 60°13.300'N 22°53.991'E
			(3) 60°13.220'N 22°53.840'E
			(4) 60°13.194'N 22°53.797'E
			(5) 60°13.218'N 22°53.733'E
			(6) 60°13.282'N 22°53.841'E
			(7) 60°13.327'N 22°53.904'E
			12
Add 			(2) 60°15.433'N 22°56.177'E
			(3) 60°15.384'N 22°56.262'E
			(4) 60°15.271'N 22°56.463'E
			(5) 60°15.149'N 22°56.184'E
			(6) 60°15.163'N 22°55.755'E
			(7) 60°14.691'N 22°54.677'E
			(8) 60°14.408'N 22°54.378'E
			(9) 60°14.429'N 22°54.253'E
			(10) 60°14.732'N 22°54.573'E

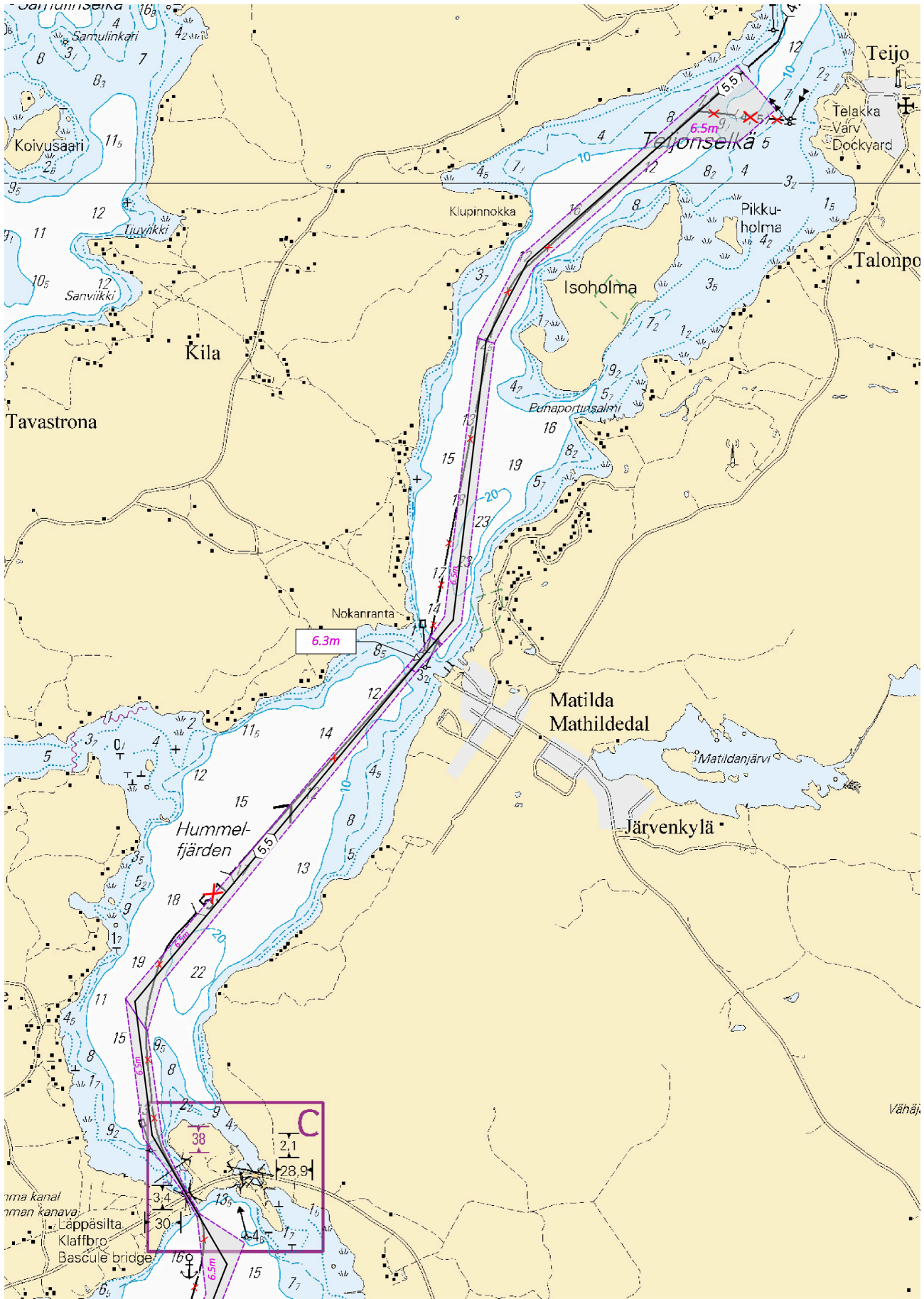


Image for reference, chart extracts not to scale of chart.

(Traficom, Helsinki/Helsingfors 2025)

\*133/2025


2025-06-09

Finland. Archipelago Sea. Salo. Kirjakkalanselkä. Buoyage. Fairways.  
Fairway areas


Charts		Previous
23, 23.X	(INT 1186)	132/2025 <a href="#">↗</a>
952		129/2025 <a href="#">↗</a>
953		108/2025 <a href="#">↗</a>
954	(INT 1210)	108/2025 <a href="#">↗</a>
B642		132/2025 <a href="#">↗</a>

References: 331/2016, 132/2025 [↗](#)


---

1	23, 23.X, 952, 953, 954, B642		
Add		Between the following positions:	(1) 60°15.409'N 22°56.219'E (2) 60°18.818'N 23°01.895'E

---

2	23, B642		
Add		Between the following positions:	(1) 60°15.503'N 22°56.534'E (2) 60°15.970'N 22°56.867'E (3) 60°17.153'N 22°58.508'E (4) 60°17.271'N 22°58.390'E (5) 60°16.005'N 22°56.801'E (6) 60°15.551'N 22°56.447'E (7) 60°15.433'N 22°56.177'E (8) 60°15.384'N 22°56.262'E (9) 60°15.503'N 22°56.534'E

---

3	23, 23.X, B642		
Add		Between the following positions:	(1) 60°17.271'N 22°58.390'E (2) 60°17.153'N 22°58.508'E (3) 60°17.575'N 22°59.665'E (4) 60°17.887'N 23°00.353'E (5) 60°18.128'N 23°01.023'E (6) 60°18.811'N 23°01.919'E (7) 60°18.826'N 23°01.873'E (8) 60°18.212'N 23°01.069'E (9) 60°18.101'N 23°00.855'E (10) 60°17.908'N 23°00.321'E (11) 60°17.271'N 22°58.390'E

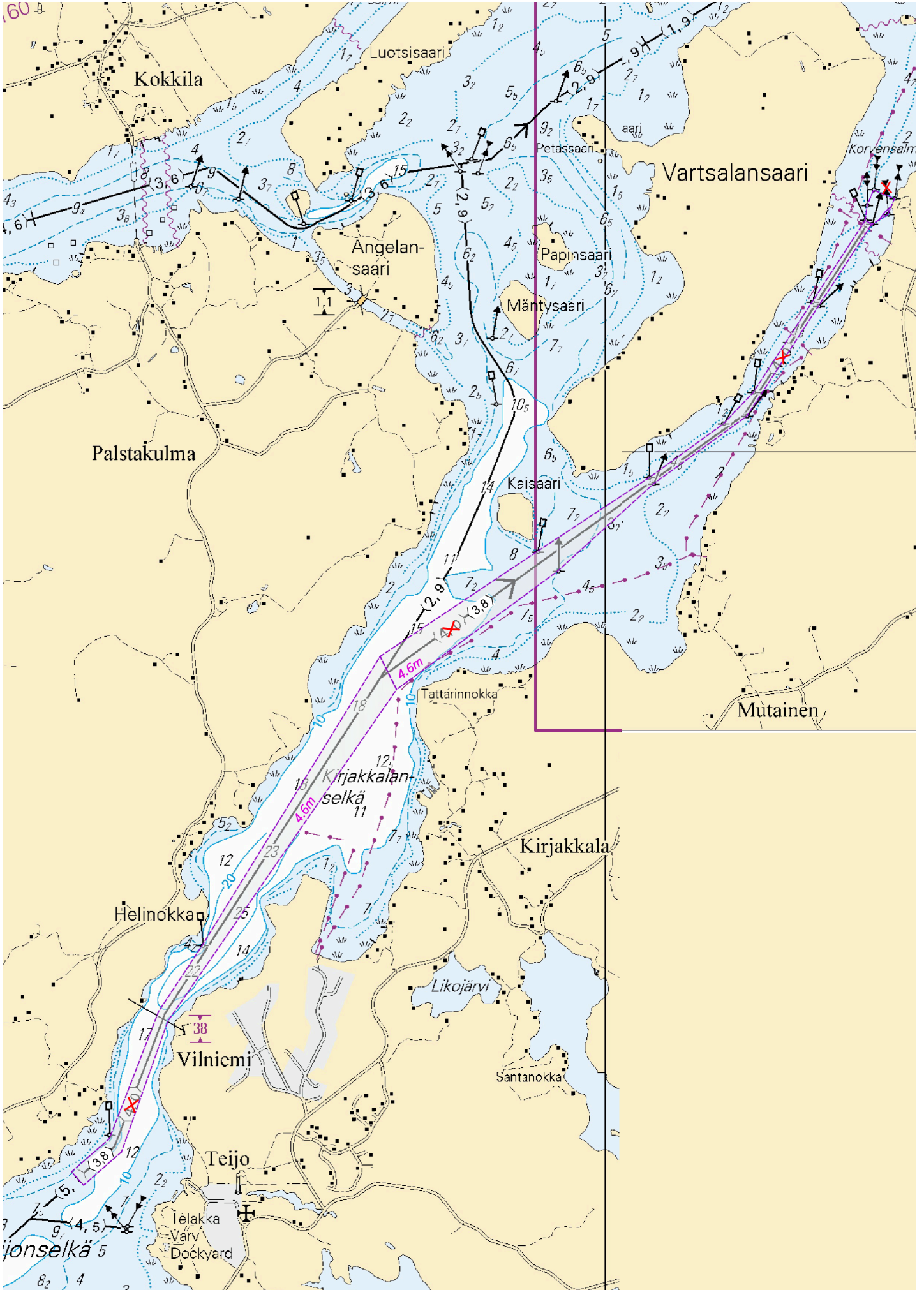




Image for reference, chart extracts not to scale of chart.

5	23.X, B642			
Add				
		(1)	60°18.811'N	23°01.919'E
		(2)	60°18.828'N	23°01.972'E
		(3)	60°18.856'N	23°02.014'E
		(4)	60°18.875'N	23°02.058'E
		(5)	60°18.903'N	23°02.082'E
		(6)	60°18.934'N	23°01.932'E
		(7)	60°18.878'N	23°01.885'E
		(8)	60°18.826'N	23°01.873'E
		(9)	60°18.811'N	23°01.919'E

6	23.X, B642			
Add		Between the following positions:		
		(1)	60°18.828'N	23°01.972'E
		(2)	60°18.847'N	23°02.035'E
		(3)	60°18.875'N	23°02.058'E
		(4)	60°18.856'N	23°02.014'E
		(5)	60°18.828'N	23°01.972'E

7	23.X, B642			
Delete			60°18.848'N	23°02.035'E
				29509

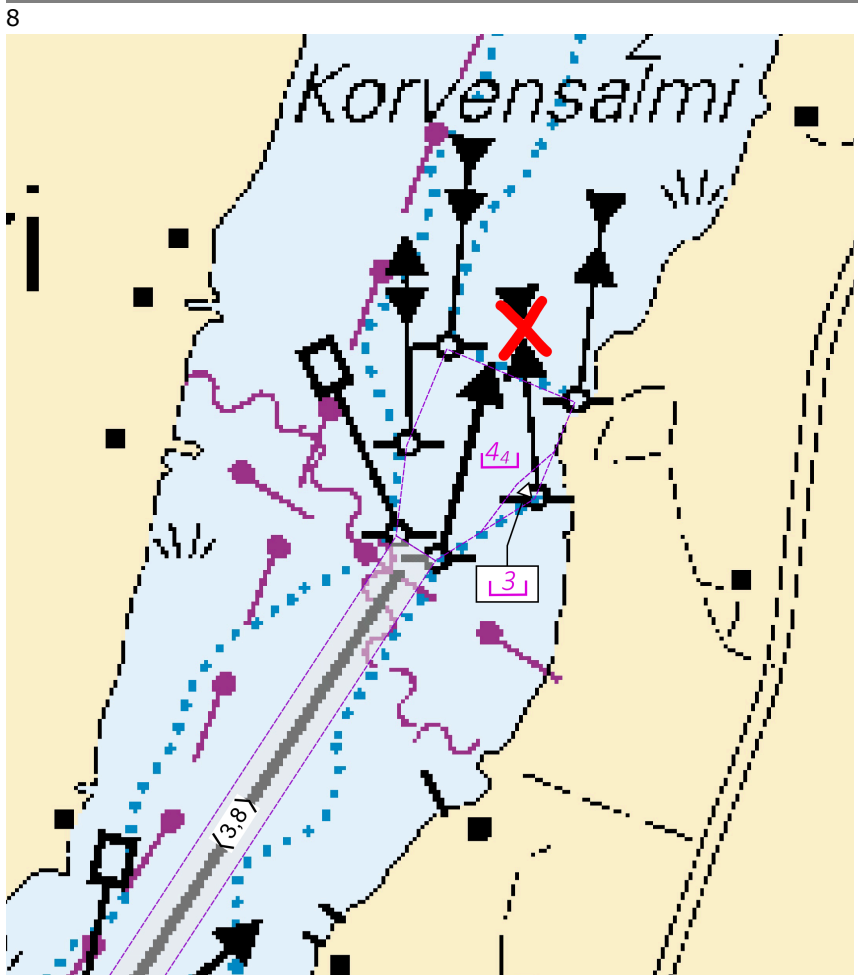


Image for reference, chart extracts not to scale of chart.

(Traficom, Helsinki/Helsingfors 2025)

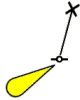
\*134/2025

2025-06-09

Finland. Archipelago Sea. SE of Utö. Withdrawn ODAS spar buoy. Buoyage

Charts		Previous
27	(INT 1190)	107/2025 <a href="#">↗</a>
167	(INT 11901)	107/2025 <a href="#">↗</a>
C714		119/2025 <a href="#">↗</a>
D713, D714		108/2025 <a href="#">↗</a>

Cancelled: 107(T)/2025 [↗](#)

1	27, 167, C714, D713, D714		
Delete		59°46.121'N	21°25.457'E
	Fl(5)W.20s		

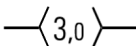
(Suomen ympäristökeskus, Finlands miljöcentral, Finnish Environment Institute, 2025)

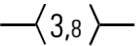
\*135/2025

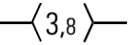
2025-06-09

Finland. Archipelago Sea. Pargas. Nötö. Aspö. (MSL/MW). Buoyage. Fairways

Charts		Previous
24	(INT 1187)	271/2024 <a href="#">↗</a>
25	(INT 1188)	108/2025 <a href="#">↗</a>
952		133/2025 <a href="#">↗</a>
953		133/2025 <a href="#">↗</a>
954	(INT 1210)	133/2025 <a href="#">↗</a>
D/INDEX, D711, D715, D716, D716.1, D716.2, D/Utö - Turku		134/2025 <a href="#">↗</a>

1	24, 25, 952, 953, 954, D/INDEX, D711, D716, D716.1, D716.2, D/Utö - Turku		
Delete		Between the following positions:	(1) 59°56.923'N 21°44.274'E (2) 59°56.944'N 21°37.932'E

2	24, 25, 952, 953, 954, D/INDEX, D716, D716.1, D/Utö - Turku		
Add		Between the following positions:	(1) 59°56.579'N 21°41.514'E (2) 59°56.751'N 21°39.830'E

3	24, 25, D711, D716, D716.2		
Add		Between the following positions:	(1) 59°57.235'N 21°45.308'E (2) 59°57.159'N 21°44.751'E
	Delete former centre line	(3)	59°57.226'N 21°44.683'E

4 24, 25, D711, D716, D716.2  
 Add  $\langle 3,8 \rangle$  Between the following positions: (1) 59°56.929'N 21°44.356'E  
 Delete former centre line (2) 59°57.235'N 21°45.308'E

5 24, 25, 952, 953, 954, D/INDEX, D715, D716, D716.1, D/Utö - Turku  
 Amend  $\langle 3,0 \rangle \rightarrow \langle 3,8 \rangle$  Between the following positions: (1) 59°56.505'N 21°40.908'E  
 (2) 59°57.078'N 21°36.902'E

6 24, 25, 952, 953, 954, D/INDEX, D711, D715, D716, D716.2, D/Utö - Turku  
 Amend  $\langle 3,0 \rangle \rightarrow \langle 3,8 \rangle$  Between the following positions: (1) 59°56.934'N 21°44.365'E  
 (2) 59°56.302'N 21°39.243'E

7 24, 25, D716, D716.1  
 Amend  $\langle 3,0 \rangle \rightarrow \langle 3,2 \rangle$  Between the following positions: (1) 59°57.078'N 21°36.902'E  
 (2) 59°57.094'N 21°36.904'E

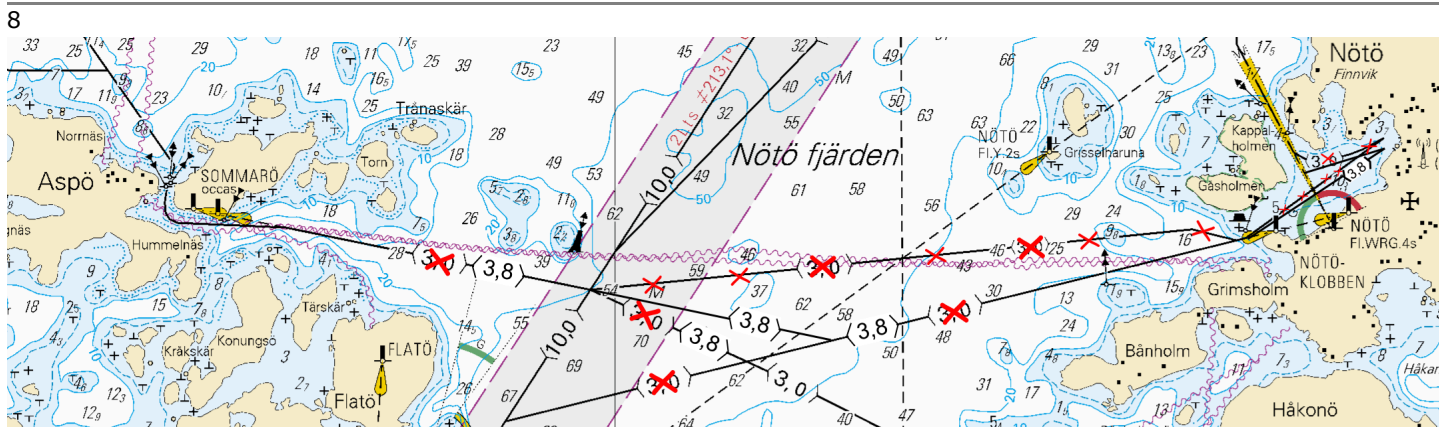



Image for reference, chart extracts not to scale of chart.

9 24, 25, D711, D716, D716.2  
 Add  59°57.203'N 21°44.793'E 89195

10

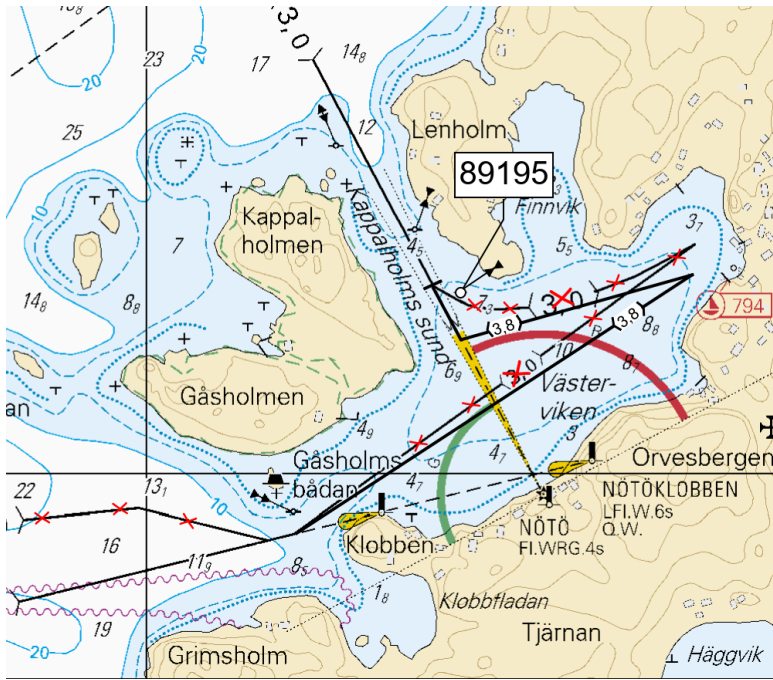


Image for reference, chart extracts not to scale of chart.

11

24, 25, D716, D716.1

Add



59°56.875'N

21°38.021'E

89193

12

24, 25, D716, D716.1

Add



59°57.020'N

21°36.955'E

89192

13

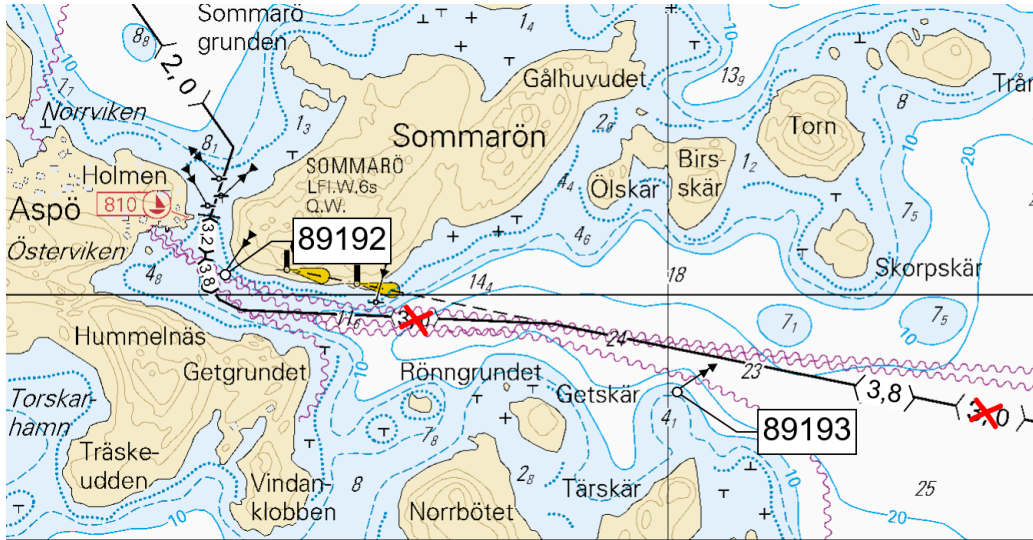


Image for reference, chart extracts not to scale of chart.

(Traficom, Helsinki/Helsingfors 2025)

\*139/2025

2025-06-10

Finland. Archipelago Sea. Raseborg. Ekenäs. (MSL/MW). Buoyage. Fairways

Charts

21, 21.B

(INT 1253)

Previous


128/2025 [↗](#)


B634, B634.2


133/2025 [↗](#)


References: [287/2024 ↗](#), [274/2024 ↗](#)

1	21, 21.B, B634, B634.2				
Add	— $\langle 1,1 \rangle$ —	Between the following positions:	(1)	59°57.161'N	23°23.453'E
		Delete former centre line	(2)	59°57.364'N	23°24.360'E
			(3)	59°57.626'N	23°24.715'E
			(4)	59°58.172'N	23°25.458'E
			(5)	59°58.262'N	23°25.954'E

2	21, 21.B, B634, B634.2				
Add				59°57.359'N	23°24.298'E
					89197

3	21, 21.B, B634, B634.2				
Add				59°57.633'N	23°24.748'E
					89198

4	21, 21.B, B634, B634.2				
Add				59°58.168'N	23°25.473'E
					89199

5	21, 21.B, B634, B634.2				
Move					
			<b>From</b>	59°58.401'N	23°24.672'E
					11918
			<b>To</b>	59°58.432'N	23°24.739'E

6	B634, B634.2				
Add	— $\langle 1,1 \rangle$ —	Between the following positions:	(1)	59°58.172'N	23°25.458'E
			(2)	59°58.420'N	23°24.673'E

7	B634, B634.2				
Add				59°58.280'N	23°25.140'E
					89200

8	B634, B634.2				
Add				59°58.267'N	23°25.123'E
					89201

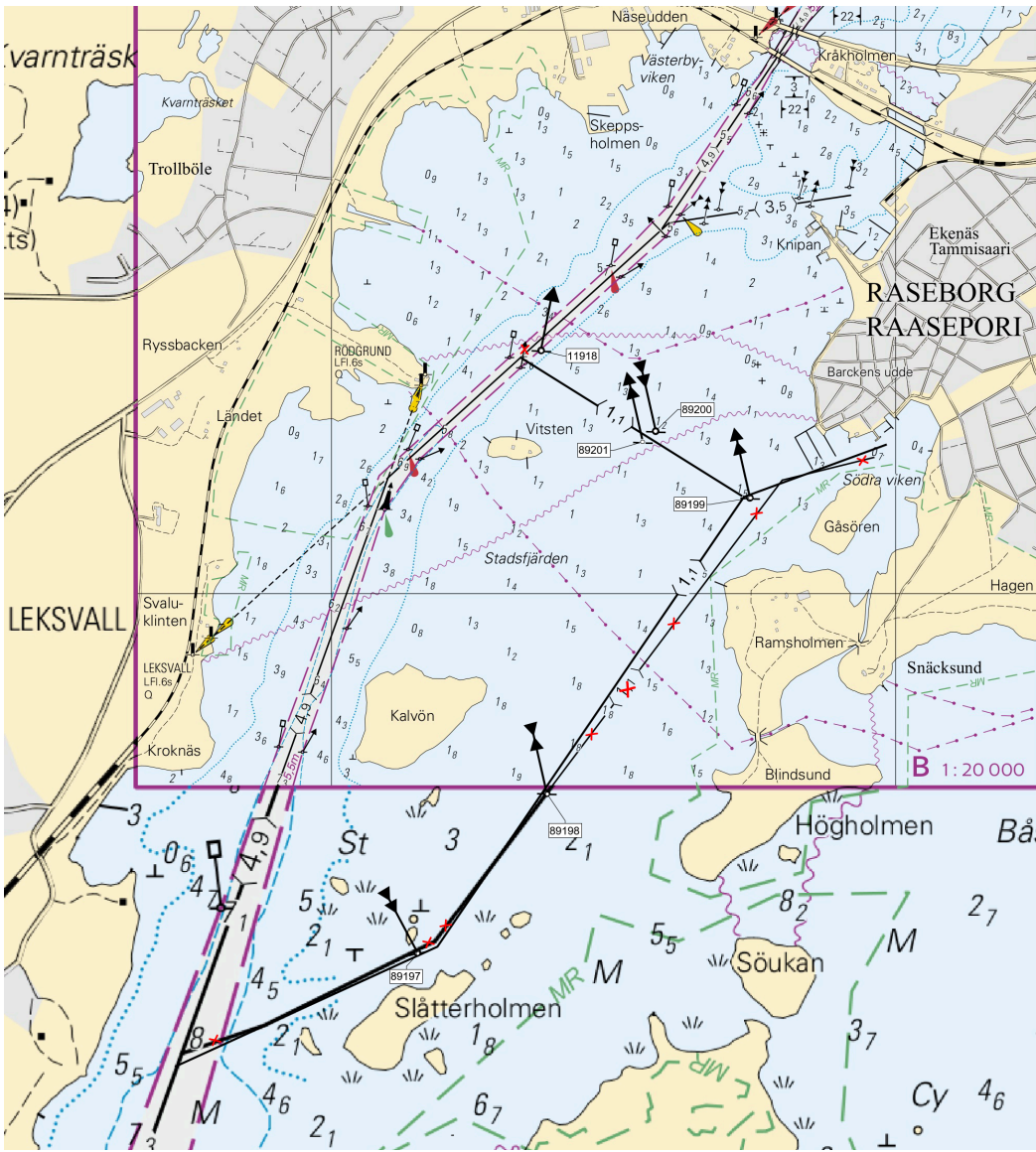


Image for reference, chart extracts not to scale of chart.

(Traficom, Helsinki/Helsingfors 2025)

# Aland Sea

\*131/2025

2025-06-09

Finland. Aland Sea. TSS SOUTH ÅLAND SEA. Light Flötjan operational.  
Buoyage

Charts		Previous
31	(INT 1194)	96/2025 <a href="#">↗</a>

Cancelled: 96(T)/2025 [↗](#)

1		31			
Amend					
	FLÖTJAN	FLÖTJAN		59°48.50'N	19°46.93'E
	FI(2)W.20s	FI(2)W.20s			6345, (C4482)
	(exting)		→		
	Racon (T) (not	Racon (T)	→		
	in use)				

(Traficom, Helsinki/Helsingfors 2025)

---

---

# Bay of Bothnia

\*136/2025

2025-06-09

Finland. Bay of Bothnia. Kemi. NE of Lighthouse Kemi 1. New Ramark.  
Buoyage

### Charts

60

(INT 1152)

### Previous

63/2025 [↗](#)

958

(INT 1209)

99/2025 [↗](#)

Cancelled: 7(T)/2025 [↗](#)

1 Add  SANTARIVI 65°25.466'N 24°16.948'E 88685

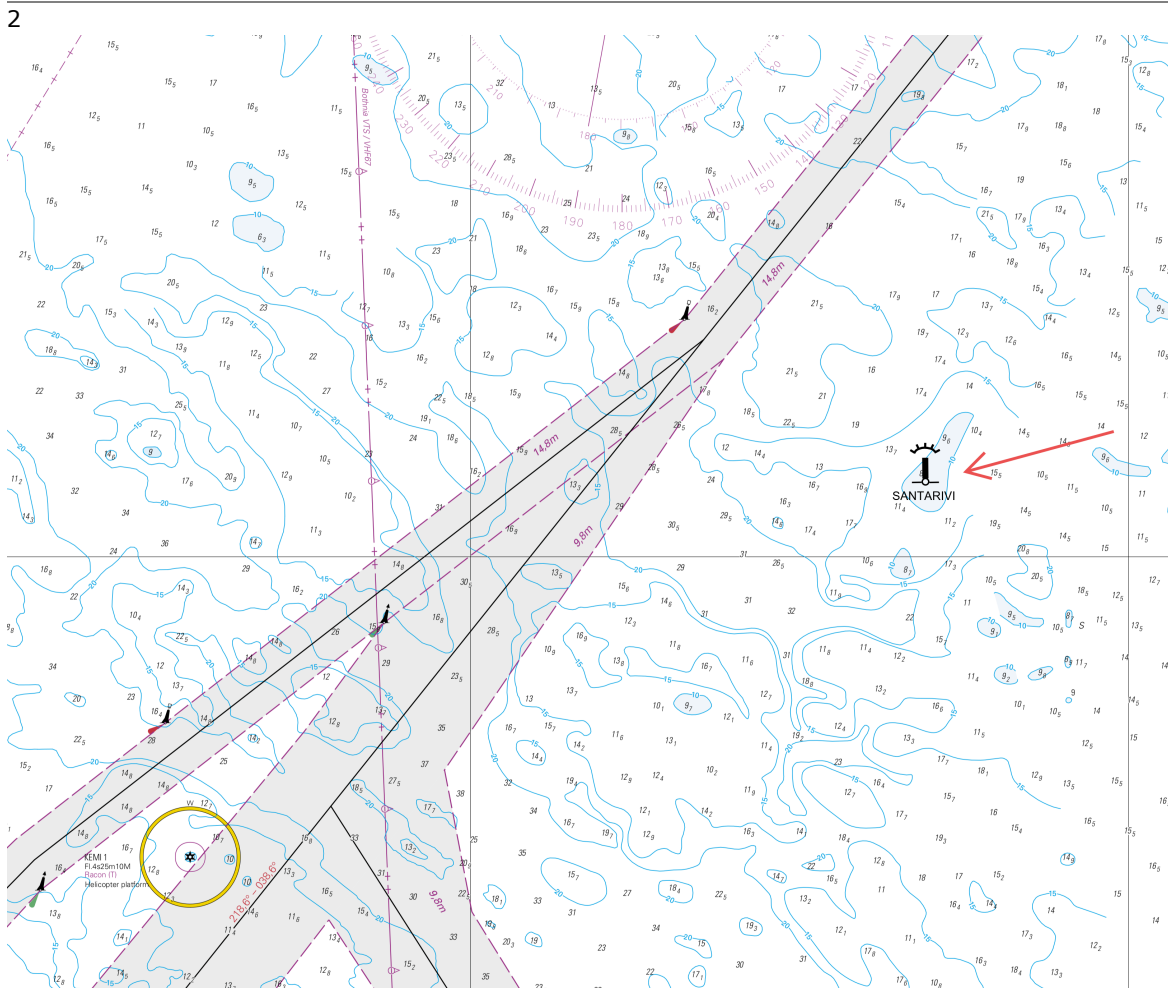


Image for reference, chart extracts not to scale of chart.

(Traficom, Helsinki/Helsingfors 2025)

\*137/2025

2025-06-09




Finland. Bay of Bothnia. Port of Oulu. ( N2000 ) (BSCD2000). Depths.  
Fairway areas

Charts		Previous
57	(INT 1148)	100/2025 <a href="#">↗</a>
119.B	(INT 11461)	104/2025 <a href="#">↗</a>
845		100/2025 <a href="#">↗</a>
846, 846.A		100/2025 <a href="#">↗</a>

References: [100/2025 ↗](#)

Cancelled: [49\(T\)/2025 ↗](#)

---

1	57, 119.B, 845, 846, 846.A		
Delete 	Between the following positions:	(1) 64°59.921'N 25°24.769'E	
		(2) 64°59.931'N 25°24.797'E	
<hr/>			
2	57, 119.B, 845, 846, 846.A		
Amend <i>9,4 m</i>		<i>9,7 m</i>	64°59.883'N 25°24.867'E
<hr/>			
3	57, 119.B, 845, 846, 846.A		
Amend <i>8,0 m</i>		<i>7,2 m</i>	65°00.063'N 25°25.082'E

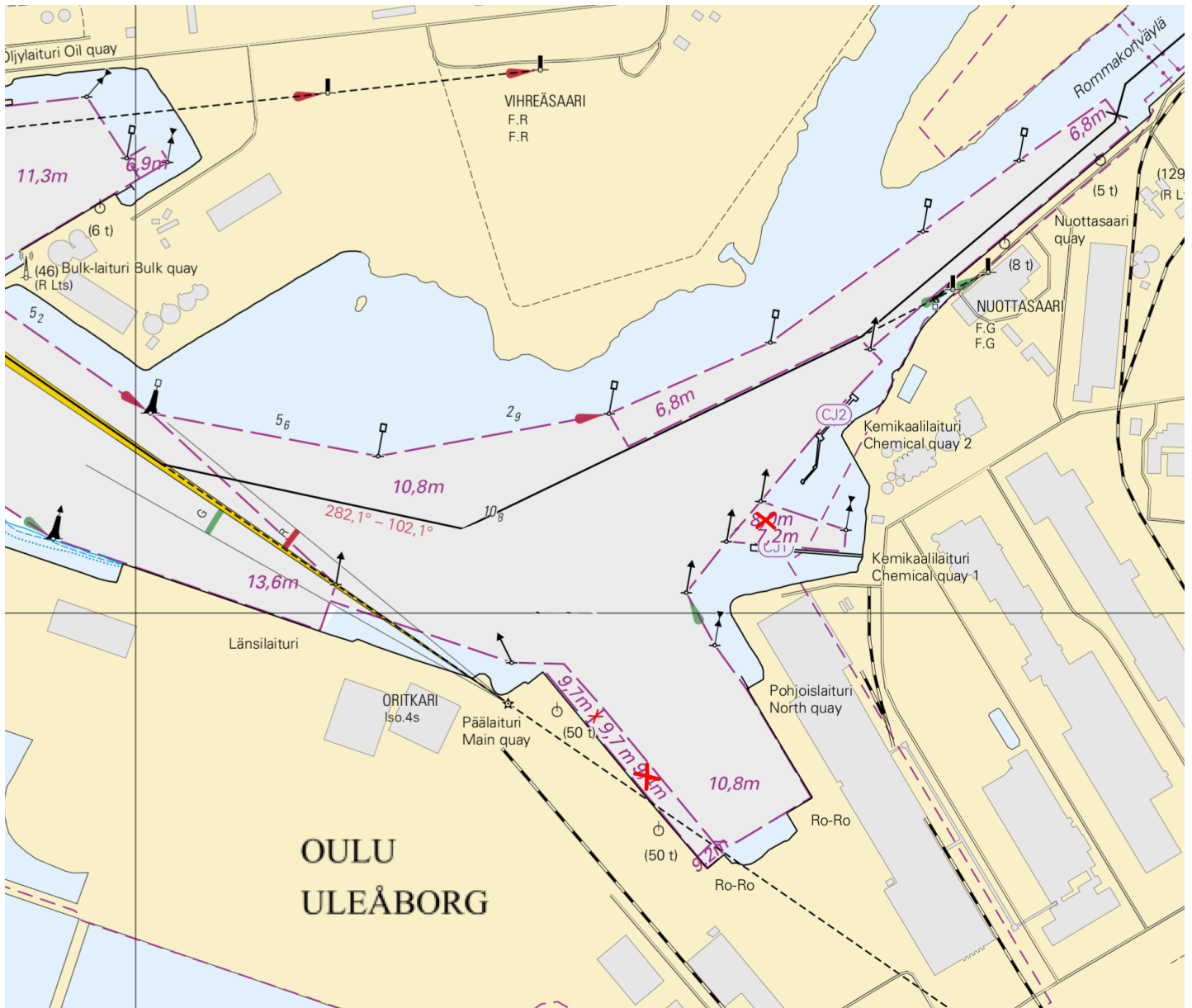


Image for reference, chart extracts not to scale of chart.

(Traficom, Helsinki/Helsingfors 2025)












\*138/2025

2025-06-09

Finland. Bay of Bothnia. Buoyage reinstated after the winter season.  
Buoyage

Charts		Previous
60	(INT 1152)	136/2025 <a href="#">↗</a>
958	(INT 1209)	136/2025 <a href="#">↗</a>

Cancelled: 257/2024 [↗](#)

1		60, 958			
Amend	 V-AIS			65°20.263'N 23°57.708'E	85067
2		60, 958			
Amend	 V-AIS			65°22.892'N 24°03.468'E	88395
3		60, 958			
Amend	 V-AIS			65°23.950'N 24°05.364'E	88398
4		60, 958			
Amend	 V-AIS			65°24.583'N 24°08.687'E	88399
5		60, 958			
Amend	 V-AIS			65°26.499'N 24°13.252'E	88397

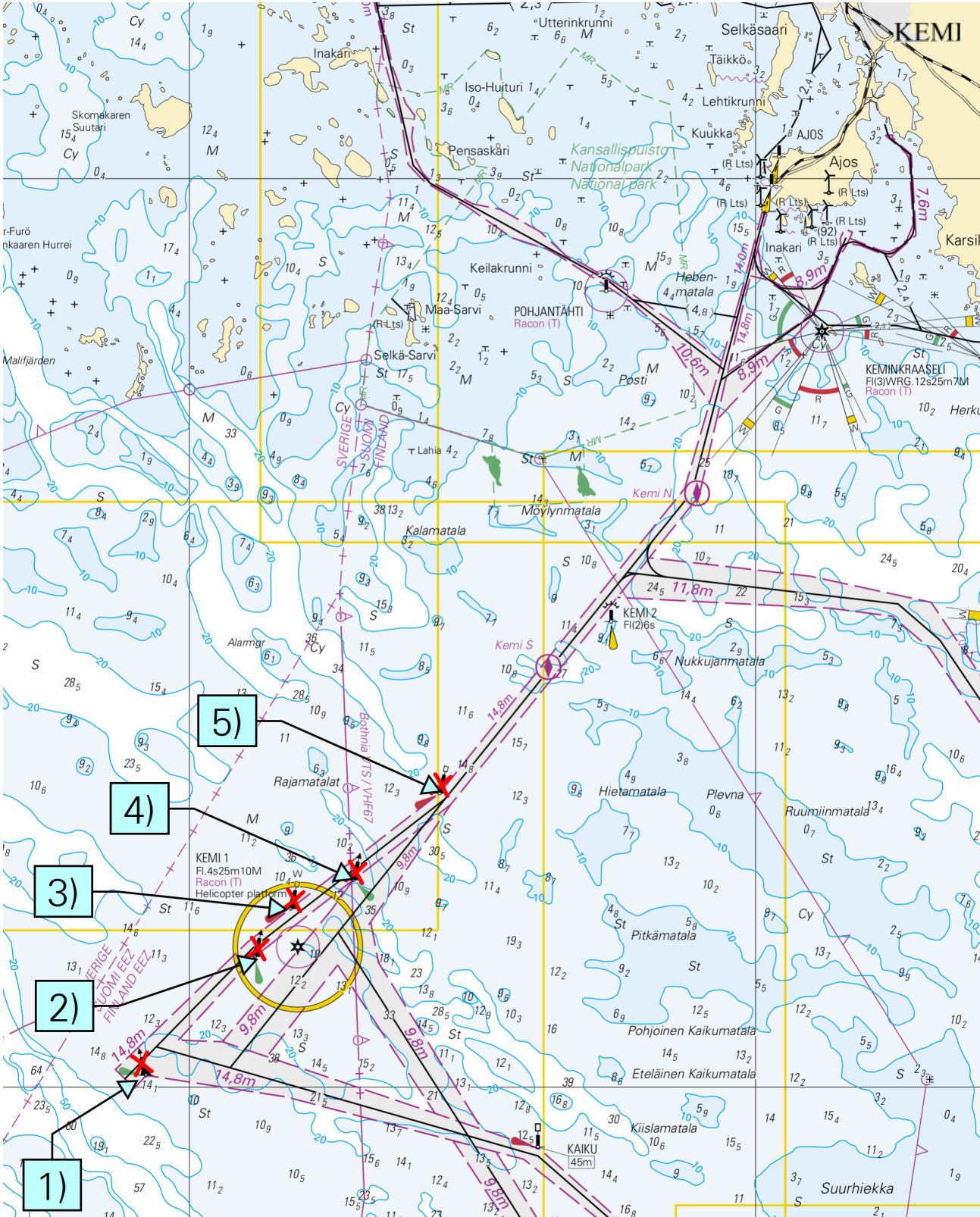


Image for reference, chart extracts not to scale of chart.

(Traficom, Helsinki/Helsingfors 2025)

# Current Preliminary (P) and Temporary (T) notices (10.06.2025)

## Gulf of Finland

T&P	Charts	Gulf of Finland
174(T)/2019 <a href="#">↗</a>	951	SE of Bol'soj Tjuters. Obstructions
296(T)/2020 <a href="#">↗</a>	17, 18, 191, 952, A, B	Helsinki. Sipoo. Areas and borders
20(T)/2021 <a href="#">↗</a>	951, A	TSS OFF ROOSHER ISLAND. Lighthouse Rodser extinguished. Notice repeated. Buoyage
228(T)/2021 <a href="#">↗</a>	951, A	Krestovyy. Lighthouse Krestovyy extinguished. Notice repeated. Buoyage
304(T)/2021 <a href="#">↗</a>	18, 192, A, B	Helsinki. Vuosaari. Notice repeated. Buoyage. Areas and borders
65(T)/2022 <a href="#">↗</a>	A, S	Vyborg. Destroyed leading beacon. Notice repeated. Buoyage
66(T)/2022 <a href="#">↗</a>	A, S	Vyborg. Light extinguished. Notice repeated. Buoyage
86(T)/2022 <a href="#">↗</a>	18, 191, 952, A, B	Helsinki. Kruunuvuori. Restrictions on small craft traffic. Fairways
90(T)/2022 <a href="#">↗</a>	951	Tiskolovo. Lighthouse Kajbolovo. Buoyage
230(T)/2023 <a href="#">↗</a>	18, 191, A, B	Helsinki. Hernesaari. Buoyage. Areas and borders
194(T)/2024 <a href="#">↗</a>	18, 191, A, B	Helsinki. Sompasaari. Buoyage
238(T)/2024 <a href="#">↗</a>	17, 952, A	Off Porvoo. Lighthouse Porvoon majakka unlit. Buoyage
78(T)/2025 <a href="#">↗</a>	15, 16	Loviisa. SE of Lighthouse Tiiskeri. ODAS spar buoy. Buoyage
103(T)/2025 <a href="#">↗</a>	951, 952	E of lighthouse Kallbådagrund. Maintenance work. Areas and borders
128(T)/2025 <a href="#">↗</a>	19, 20, 21, 132, 952, A, B	Hanko - Porkkala. Dynamic Messenger exercise. Areas and borders
129(T)/2025 <a href="#">↗</a>	952, A, B	Off Tallinn. Lighthouse Vahemadal extinguished. Buoyage
130(T)/2025 <a href="#">↗</a>	18, 191, A, B	Helsinki. Hernesaari. Notice repeated. Buoyage

## Archipelago Sea

T&P	Charts	Archipelago Sea
189(T)/2023 <a href="#">↗</a>	26, D	Pargas. Kirjala...Restrictions on traffic. Areas and borders
40(T)/2024 <a href="#">↗</a>	26, 190, D	Naantali. Raumakari. Särkänalmi. Kirkonsalmi. Notice repeated. Buoyage
130(T)/2024 <a href="#">↗</a>	27, D	Pargas. S of Utö. ODAS buoy. Buoyage
168(T)/2024 <a href="#">↗</a>	25, 26, 37, D	Pargas. Seili. ODAS buoy. Buoyage
239(T)/2024 <a href="#">↗</a>	27, 167, D	S of Utö. Söderdjupet. Measuring equipment on seabed. Areas and borders
267(T)/2024 <a href="#">↗</a>	26, 190, D	Port of Turku. Construction works. Areas and borders

## Aland Sea

T&P	Charts	Aland Sea
97(T)/2025 <a href="#">↗</a>	32, 160, C	Mariehamn. Lemströms canal...Notice repeated. Areas and borders

## Bothnian Sea

T&P	Charts	Bothnian Sea
6(T)/2025 <a href="#">↗</a>	42, 125	Pori. Tahkoluoto. Notice repeated. Buoyage
127(T)/2025 <a href="#">↗</a>	45, 46, 815, 816	Korsnäs. Measuring equipment on seabed. Obstructions

## The Quark

T&P	Charts	The Quark
238(T)/2022 <a href="#">↗</a>	48, 115, 921, F, M	Vaasa. Vaskiluoto. Notice repeated. Buoyage
247(T)/2024 <a href="#">↗</a>	48, 820, 956, 957	Vaasa. Johansson. Buoyage
262(T)/2024 <a href="#">↗</a>	48, 115, 820	Vaasa. Vaskiluoto. ( N2000 ) (BSCD2000). Buoyage. Fairway areas
279(T)/2024 <a href="#">↗</a>	48, 115, 820, 957, 8061, 8065	Vaasa. Vaskiluoto. Buoyage. Fairway areas
79(T)/2025 <a href="#">↗</a>	48, 115, 820, 956, 957	Vaasa. Dredging operations. Areas and borders
112(T)/2025 <a href="#">↗</a>	48, 115, 820, 956, 957	Port of Vasa. Channel to Vasa. Areas and borders

## Bay of Bothnia

T&P	Charts	Bay of Bothnia
145(T)/2024 <a href="#">↗</a>	57, 846, 958, 8071	Hailuoto. Bridge construction work. Areas and borders
164(T)/2024 <a href="#">↗</a>	57, 119, 846	Oulu. Pikisaari. Fairways
3(T)/2025 <a href="#">↗</a>	57, 60, 848, 958	Off Oulu. SW of Lighthouse Oulu 1. Lost buoy. Virtual AIS. Buoyage
83(T)/2025 <a href="#">↗</a>	57, 846	Hailuoto. Boating passages at the Riutunkari and Huikku bridges.
104(T)/2025 <a href="#">↗</a>	55, 119, 838, 839	Port of Raahe. Dredging operations. Areas and borders
117(T)/2025 <a href="#">↗</a>	59, 854	Off Tornio. Maintenance of aids to navigation. Buoyage

## Vuoksi watercourse

T&P	Charts	Vuoksi watercourse
214(T)/2020 <a href="#">↗</a>		Leppävirta. Hyvärilä. Buoyage
64(T)/2025 <a href="#">↗</a>	L	Lappeenranta. Muukonsaari. Buoyage
72(T)/2025 <a href="#">↗</a>	M	Varkaus. Kortesaaret. Buoyage

## Kymijoki watercourse

T&P	Charts	Kymijoki watercourse
-	-	

## Kokemäijoki watercourse

T&P	Charts	Kokemäijoki watercourse
-	-	

## Oulujoki watercourse

T&P	Charts	Oulujoki watercourse
-	-	

## Paatsjoki watercourse

T&P	Charts	Paatsjoki watercourse
-	-	

## Saimaa Canal

T&P	Charts	Saimaa Canal
-	-	

## Northern Baltic

T&P	Charts	Northern Baltic
11(T)/2024 <a href="#">↗</a>	952, 953, 954	Hiiumaa. Tahkuna. Light Lehtma extinguished. Buoyage

## Announcements

T&P	Charts	Announcements
137(T)/2023 <a href="#">↗</a>		Helsinki. Korkeasaari...Restrictions on small craft traffic
102(T)/2024 <a href="#">↗</a>		Pargas. Hessund. Bridge construction work.
86(T)/2025 <a href="#">↗</a>		Helsinki. Hevossalmi.