



Notices to Mariners

NtM 18/2025

Notices: 153 - 161 / 30.06.2025



Table of Contents

Title	Page
Index by Area	2
Index by Chart	3
Gulf of Finland	4
Archipelago Sea	5
Bothnian Sea	8
Bay of Bothnia	10
Vuoksi watercourse	11
Announcements	12
Current Preliminary (P) and Temporary (T) notices (30.06.2025)	13

Index by Area

Gulf of Finland

Charts

*161/2025 19, 20, 21, 132, 952, A, B

Archipelago Sea

Charts

*153/2025 29, 30, D

*154/2025 32, 162, 745, 753

*155/2025 30, 109, 738

Bothnian Sea

Charts

*156/2025 40, 801, 802, 803, D

157(T)/2025 953, 955, 8031

Bay of Bothnia

Charts

158/2025 958

Vuoksi watercourse

Charts

*159/2025 M

Announcements

Charts

*160/2025

Index by Chart

Charts	Notices
19	*161/2025
20	*161/2025
21	*161/2025
29	*153/2025
30	*153/2025, *155/2025
32	*154/2025
40	*156/2025
109	*155/2025
132	*161/2025
162	*154/2025
738	*155/2025
745	*154/2025
753	*154/2025
801	*156/2025
802	*156/2025
803	*156/2025
952	*161/2025
953	157(T)/2025
955	157(T)/2025
958	158/2025
8031	157(T)/2025
A	*161/2025
B	*161/2025
D	*153/2025, *156/2025
M	*159/2025

Gulf of Finland

*161/2025


2025-06-30

Finland. Gulf of Finland. Hanko - Porkkala. Dynamic Messenger exercise completed. Areas and borders

Charts		Previous
19	(INT 1251)	128/2025 ↗
20	(INT 1252)	128/2025 ↗
21	(INT 1253)	139/2025 ↗
132	(INT 12511)	128/2025 ↗
952		140/2025 ↗
A/Helsinki - Tallinna		144/2025 ↗
B629, B629.1, B631, B632, B633, B/Hanko - Haapsalu, B/Helsinki - Tallinn		143/2025 ↗

Cancelled: 128(T)/2025 [↗](#)

1 19, 20, 21, 132, 952, A/Helsinki - Tallinna, B629, B629.1, B631, B632, B633, B/Hanko - Haapsalu, B/Helsinki - Tallinn

Delete 	Between the following positions:	(1)	59°39.5'N	23°21.0'E
		(2)	59°44.5'N	23°21.0'E
		(3)	59°55.5'N	24°30.0'E
		(4)	59°49.2'N	24°30.0'E
		(5)	59°47.1'N	24°12.4'E
		(6)	59°39.5'N	23°21.0'E

2

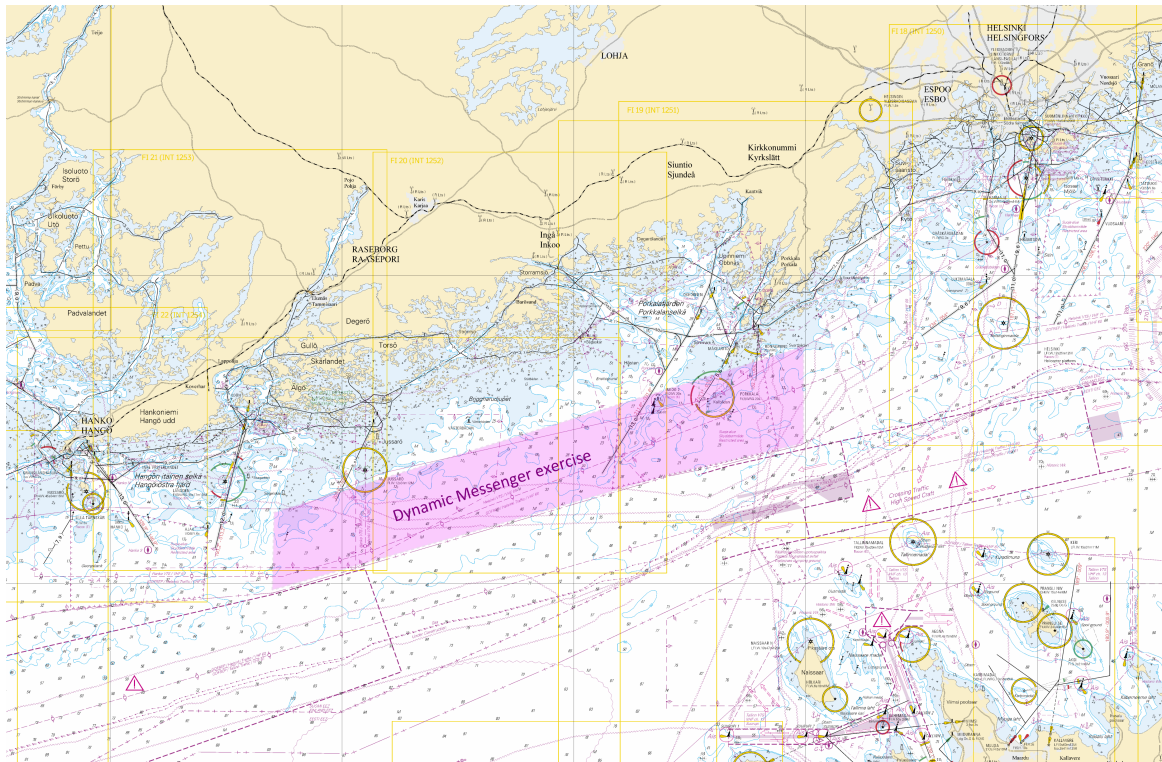


Image for reference, chart extracts not to scale of chart.

()






Archipelago Sea

*153/2025

2025-06-30

Finland. Archipelago Sea. Brändö. Buoyage. Fairways. Vertical Clearances

Charts	Previous
29	(INT 1192) 117/2024 ↗
30	(INT 1197) 119/2025 ↗
D732, D732.2, D733	146/2025 ↗

1	29, D732				
Delete		Front	60°23.804'N	21°02.137'E	28882
<hr/>					
2	29, D732				
Delete		Rear	60°23.644'N	21°02.192'E	28883
<hr/>					
3	29, D732				
Delete	— — — —	Leading line between the following positions:	(1) 60°23.644'N	21°02.192'E	
			(2) 60°23.957'N	21°02.085'E	
<hr/>					
4	29, 30, D732, D732.2, D733				
Delete		Front	60°24.252'N	21°01.938'E	28908
<hr/>					
5	29, 30, D732, D732.2, D733				
Delete		Rear	60°24.229'N	21°01.944'E	28909
<hr/>					
6	29, 30, D732, D732.2, D733				
Delete	— — — —		(1) 60°24.229'N	21°01.944'E	
			(2) 60°24.305'N	21°01.940'E	
<hr/>					
7	29, D732				
Add			60°23.967'N	21°02.110'E	89211
<hr/>					
8	29, 30, D732, D732.2, D733				
Add			60°24.201'N	21°02.008'E	89212

9

29, 30, D732, D732.2, D733

Add



60°24.252'N

21°01.977'E

89213

10

29, 30, D732, D732.2, D733

Amend



60°24.23'N

21°01.99'E

11

29, 30, D732, D732.2, D733

Amend



60°24.23'N

21°01.99'E

12

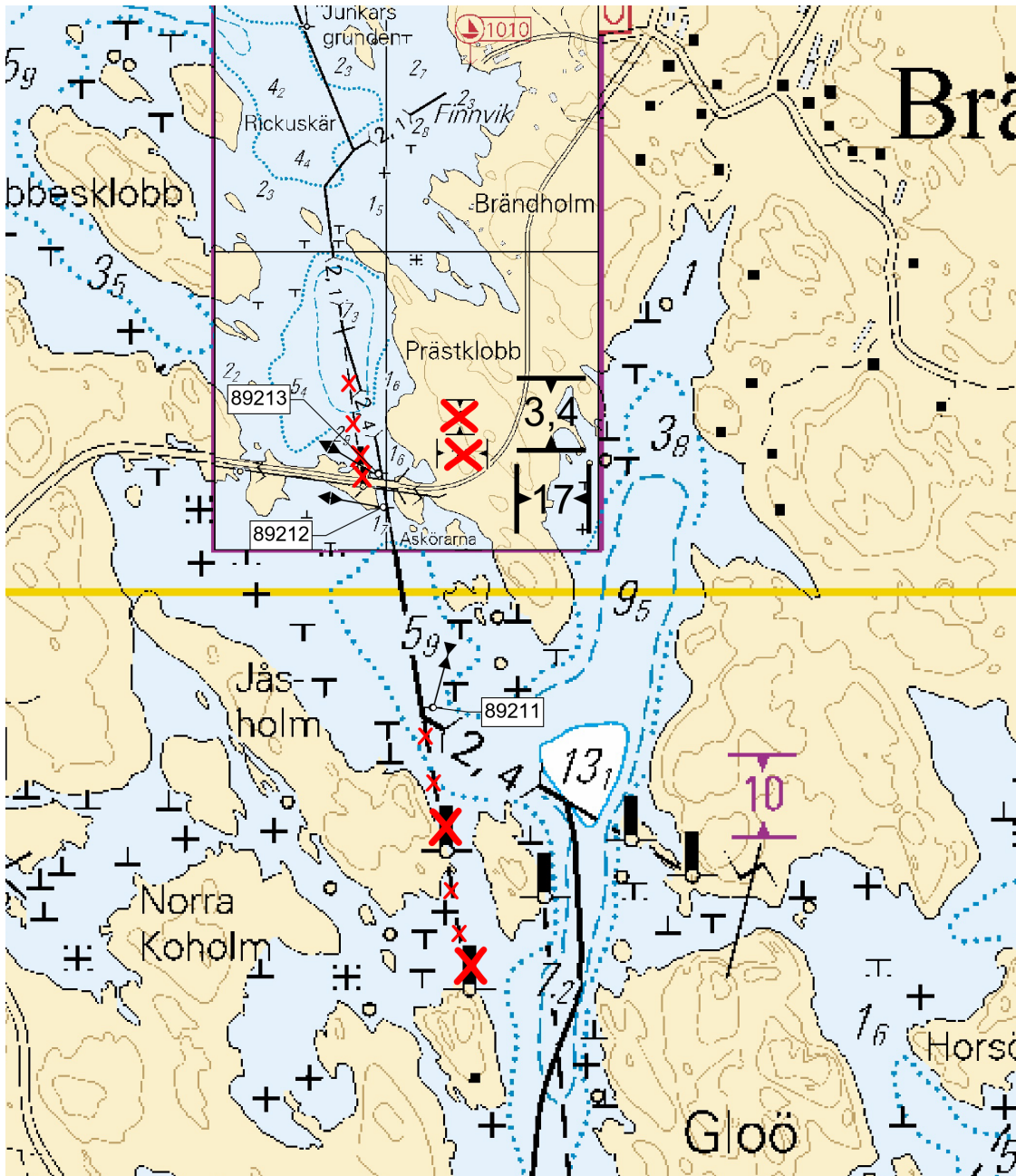


Image for reference, chart extracts not to scale of chart.

(Traficom, Helsinki/Helsingfors 2025)




Bothnian Sea




*156/2025




2025-06-30





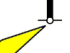
Finland. Bothnian Sea. Uusikaupunki. Putsaari. Buoyage

Charts	Previous
40 (INT 1131)	60/2025 ↗
801	60/2025 ↗
802	60/2025 ↗
803	/
D735	153/2025 ↗

1
Amend  RAMSÖ Fl.3.s   RAMSÖ Fl.3.s 40, 801, 802, 803, D735
Front (341,0° - 347,0°)
5,1M 60°46.830'N 21°10.131'E 3097, (C4455.4)

2
Amend  RAMSÖ   RAMSÖ LFI.6.s 40, 801, 803, D735
Rear (341,0° - 347,0°)
5,2M 60°46.965'N 21°10.053'E 22109

3
Amend  ISO RUSKIO VQ(2)3.s   ISO RUSKIO Fl.3.s 40, 801, 803, D735
Front (303,0° - 309,0°)
4,9M 60°47.397'N 21°07.121'E 3096, (C4447.9)

4
Amend      PIHLAJAKARI LFI.6.s 40, 801, 802, 803
Rear (303,0° - 309,0°)
6,3M 60°48.214'N 21°04.783'E 22144

(Traficom, Helsinki/Helsingfors 2025)

157(T)/2025

2025-06-30

Sweden. Bothnian Sea. NE of Grundkallen. Diving works. Areas and borders

Charts	Previous
953	135/2025 ↗
955	80/2025 ↗
8031/INDEX	/

Time: 9 - 25 July 2025

1
 Decontamination of wreck and diving operations by vessel 'M/V VINA'/OVJJ2 in vicinity of position below. Work area marked with reflective buoys, radar reflectors and light buoys.

Wide berth requested. Safety distance 0,5 M.

Contact via VHF Ch 16 or telephone 45-24 616 611 (M/V VINA).

2 953, 955, 8031/INDEX

Add



Diving works

60°33.05'N

19°07.9'E

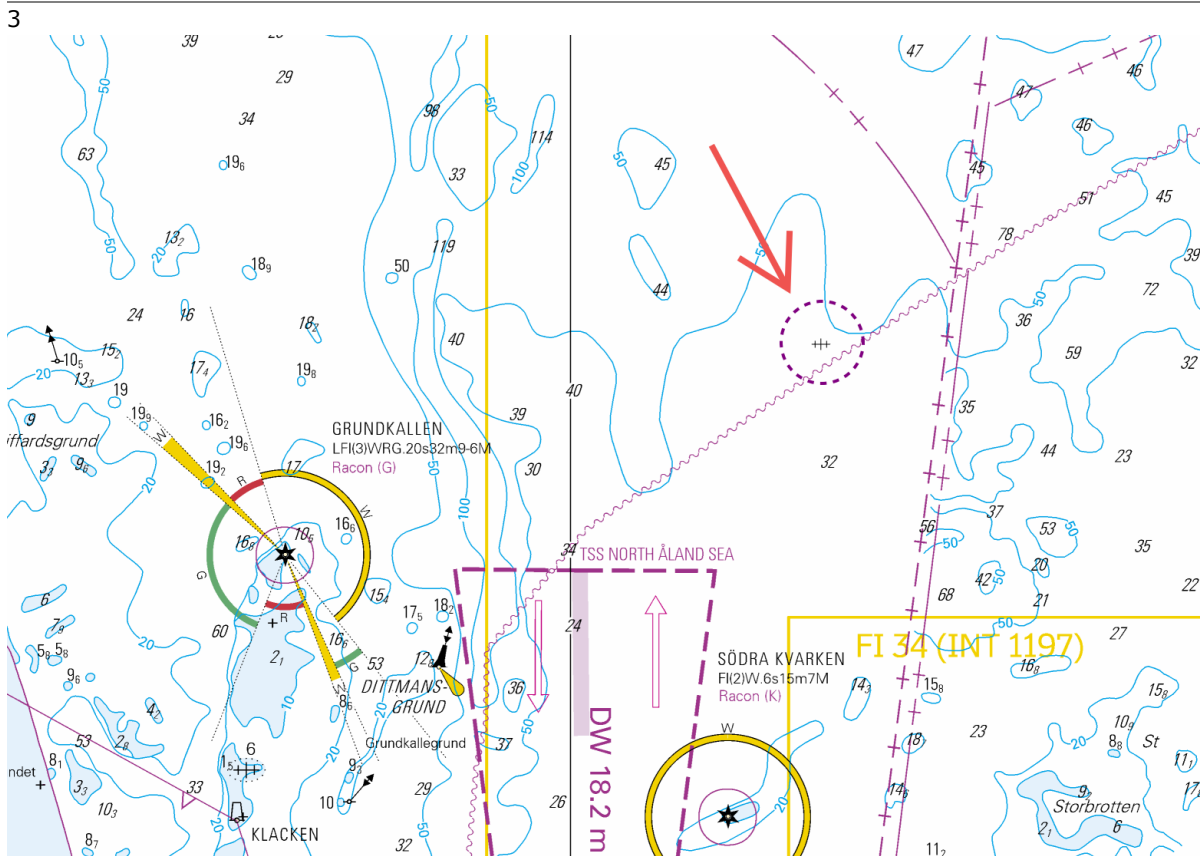


Image for reference, chart extracts not to scale of chart.

(Ufs 1072/19367(T), Norrköping 2025)

Bay of Bothnia

158/2025

2025-06-30

Sweden. Bay of Bothnia. Off Luleå. S of Rodkallen. Obstructions

Charts

958

(INT 1209)

Previous

138/2025 [↗](#)

1

958

Add



65°13.748'N

22°20.381'E

((Ufs 1071/19330, Norrköping 2025))

Vuoksi watercourse

*159/2025

2025-06-30

Finland. Vuoksi watercourse. Leppävirta. Alapiha. Obstructions

Charts

M231, M231.1

Previous

124/2025 [↗](#)

1

M231, M231.1

Add



Obstn

62°29.927'N

27°47.902'E

2

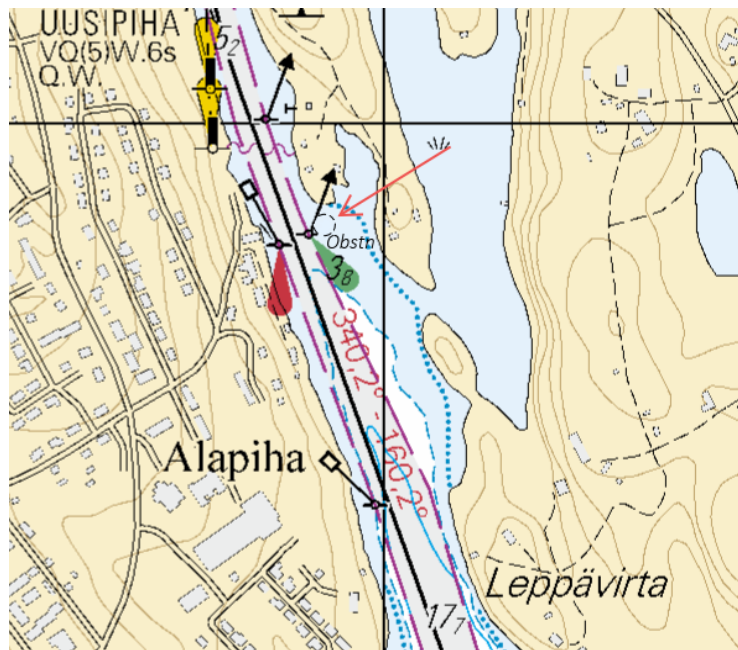


Image for reference, chart extracts not to scale of chart.

(Traficom, Helsinki/Helsingfors 2025)

Announcements

*160/2025

2025-06-30

Finland. Sailing Directions for Finnish waters. Channel descriptions of Main approach channels. Main approach channels 2.3.3 - Bay of Bothnia.

Charts

Previous

References:235/2024 [🔗](#)

1

Sailing directions for Finnish water 2.3.3 - Bay of Bothnia (New versions of publications).

The Finnish Transport and Communications Agency Traficom publishes the nautical charts and nautical publications in Finland. Nautical publications contain information to support the nautical charts. Sailing Directions for Finnish waters consists of a General information part (part 1) and descriptions of the main approach channels (Part 2 – Main approach channels). Part 2 is divided into several volumes. Sailing directions for Finnish waters - Part 1, contains general information, guidelines and links to further information. The channel descriptions include depth- and design-data with general notes on usage of the main approach channels. Sailing directions are published as PDF- documents and provided for free download at: <https://fiho.fi/lnk/sd/en>.

Channel descriptions are published together with the N2000 nautical charts. Volume 2.3.3 - Bay of Bothnia, has been published 24 June 2025.

Temporary changes to fairways are not reflected in the Sailing Directions. Mariners should follow the Notices to Mariners and ensure availability of the newest publications including any needed linked material onboard.

<https://www.traficom.fi/en/services/notices-mariners>

(Traficom, Helsinki/Helsingfors 2025)

Current Preliminary (P) and Temporary (T) notices (30.06.2025)

Gulf of Finland

T&P	Charts	Gulf of Finland
174(T)/2019 🔗	951	SE of Bol'soj Tjuters. Obstructions
296(T)/2020 🔗	17, 18, 191, 952, A, B	Helsinki. Sipoo. Areas and borders
20(T)/2021 🔗	951, A	TSS OFF ROOSHER ISLAND. Lighthouse Rodser extinguished. Notice repeated. Buoyage
228(T)/2021 🔗	951, A	Krestovyy. Lighthouse Krestovyy extinguished. Notice repeated. Buoyage
65(T)/2022 🔗	A, S	Vyborg. Destroyed leading beacon. Notice repeated. Buoyage
66(T)/2022 🔗	A, S	Vyborg. Light extinguished. Notice repeated. Buoyage
86(T)/2022 🔗	18, 191, 952, A, B	Helsinki. Kruunuvuori. Restrictions on small craft traffic. Fairways
90(T)/2022 🔗	951	Tiskolovo. Lighthouse Kajbolovo. Buoyage
230(T)/2023 🔗	18, 191, A, B	Helsinki. Hernesaari. Buoyage. Areas and borders
194(T)/2024 🔗	18, 191, A, B	Helsinki. Sompasaari. Buoyage
78(T)/2025 🔗	15, 16	Loviisa. SE of Lighthouse Tiiskeri. ODAS spar buoy. Buoyage
103(T)/2025 🔗	951, 952	E of lighthouse Kallbådagrund. Maintenance work. Areas and borders
129(T)/2025 🔗	952, A, B	Off Tallinn. Lighthouse Vahemadal extinguished. Buoyage
130(T)/2025 🔗	18, 191, A, B	Helsinki. Hernesaari. Notice repeated. Buoyage
143(T)/2025 🔗	18, 191, A, B	Helsinki. S of Vallisaari. Temporarily withdrawn remark. Buoyage

Archipelago Sea

T&P	Charts	Archipelago Sea
189(T)/2023 🔗	26, D	Pargas. Kirjala...Restrictions on traffic. Areas and borders
40(T)/2024 🔗	26, 190, D	Naantali. Raumakari. Särkäsalmi. Kirkonsalmi. Notice repeated. Buoyage
130(T)/2024 🔗	27, D	Pargas. S of Utö. ODAS buoy. Buoyage
168(T)/2024 🔗	25, 26, 37, D	Pargas. Seili. ODAS buoy. Buoyage
239(T)/2024 🔗	27, 167, D	S of Utö. Söderdjupet. Measuring equipment on seabed. Areas and borders
267(T)/2024 🔗	26, 190, D	Port of Turku. Construction works. Areas and borders

Aland Sea

T&P	Charts	Aland Sea
97(T)/2025 ↗	32, 160, C	Mariehamn. Lemströms canal...Notice repeated. Areas and borders

Bothnian Sea

T&P	Charts	Bothnian Sea
6(T)/2025 ↗	42, 125	Pori. Tahkoluoto. Notice repeated. Buoyage
157(T)/2025 ↗	953, 955, 8031	NE of Grundkallen. Diving works. Areas and borders

The Quark

T&P	Charts	The Quark
238(T)/2022 ↗	48, 115, 921, F, M	Vaasa. Vaskiluoto. Notice repeated. Buoyage
247(T)/2024 ↗	48, 820, 956, 957	Vaasa. Johansson. Buoyage
262(T)/2024 ↗	48, 115, 820	Vaasa. Vaskiluoto. (N2000) (BSCD2000). Buoyage. Fairway areas
279(T)/2024 ↗	48, 115, 820, 957, 8061, 8065	Vaasa. Vaskiluoto. Buoyage. Fairway areas
79(T)/2025 ↗	48, 115, 820, 956, 957	Vaasa. Dredging operations. Areas and borders
112(T)/2025 ↗	48, 115, 820, 956, 957	Port of Vasa. Channel to Vasa. Areas and borders

Bay of Bothnia

T&P	Charts	Bay of Bothnia
145(T)/2024 ↗	57, 846, 958, 8071	Hailuoto. Bridge construction work. Areas and borders
164(T)/2024 ↗	57, 119, 846	Oulu. Pikisaari. Fairways
3(T)/2025 ↗	57, 60, 848, 958	Off Oulu. SW of Lighthouse Oulu 1. Lost buoy. Virtual AIS. Buoyage
83(T)/2025 ↗	57, 846	Hailuoto. Boating passages at the Riutunkari and Huikku bridges.
104(T)/2025 ↗	55, 119, 838, 839	Port of Raahe. Dredging operations. Areas and borders
117(T)/2025 ↗	59, 854	Off Tornio. Maintenance of aids to navigation. Buoyage

Vuoksi watercourse

T&P	Charts	Vuoksi watercourse
214(T)/2020 ↗		Leppävirta. Hyvärilä. Buoyage
64(T)/2025 ↗	L	Lappeenranta. Muukonsaari. Buoyage
72(T)/2025 ↗	M	Varkaus. Kortesaaret. Buoyage

Kymijoki watercourse

T&P	Charts	Kymijoki watercourse
-	-	

Kokemäijoki watercourse

T&P	Charts	Kokemäijoki watercourse
-	-	

Oulujoki watercourse

T&P	Charts	Oulujoki watercourse
-	-	

Paatsjoki watercourse

T&P	Charts	Paatsjoki watercourse
-	-	

Saimaa Canal

T&P	Charts	Saimaa Canal
-	-	

Northern Baltic

T&P	Charts	Northern Baltic
11(T)/2024 ↗	952, 953, 954	Hiiumaa. Tahkuna. Light Lehtma extinguished. Buoyage

Announcements

T&P	Charts	Announcements
137(T)/2023 ↗		Helsinki. Korkeasaari...Restrictions on small craft traffic
102(T)/2024 ↗		Pargas. Hessund. Bridge construction work.
86(T)/2025 ↗		Helsinki. Hevossalmi.