



Notices to Mariners

NtM 19/2025

Notices: 162 - 167 / 10.07.2025



Table of Contents

Title	Page
Index by Area	2
Index by Chart	3
Archipelago Sea	4
Bothnian Sea	6
Vuoksi watercourse	8
Current Preliminary (P) and Temporary (T) notices (10.07.2025)	9

Index by Area

Archipelago Sea

Charts

*162(T)/2025	24, 25, D
*163(T)/2025	24, 25, D
*164/2025	22, B

Bothnian Sea

Charts

165(T)/2025	955
*166/2025	41, 127, 805

Vuoksi watercourse

Charts

*167/2025	M
-----------	---

Index by Chart

Charts	Notices
22	*164/2025
24	*162(T)/2025, *163(T)/2025
25	*162(T)/2025, *163(T)/2025
41	*166/2025
127	*166/2025
805	*166/2025
955	165(T)/2025
B	*164/2025
D	*162(T)/2025, *163(T)/2025
M	*167/2025

Archipelago Sea

*162(T)/2025

2025-07-10

Finland. Archipelago Sea. Pargas. S of Nagu. Temporarily withdrawn edge marks. Buoyage

Charts		Previous
24	(INT 1187)	145/2025 ↗
25	(INT 1188)	135/2025 ↗
D709, D710, D711, D715, D716, D717, D717.2		156/2025 ↗


Time: to approx. 31 October 2025


1

The structures of the edge marks has been withdrawn during the repair work. The spar buoys are placed next to edge marks during the repair work.

2	24, D715, D716			
Delete				
	UTTERHARUN 35m	59°55.210'N	21°39.678'E	21776

3	24, D710, D711			
Delete				
	STYRHÖLMARNA 35m	59°56.346'N	21°53.014'E	21773

4	24, 25, D711, D716			
Delete				
	NÖTÖ - MJOÖ 50m	59°57.459'N	21°47.619'E	21768

5	25, D709, D716, D717, D717.2			
Delete				
	10m	60°02.650'N	21°48.723'E	21712

(Traficom, Helsinki/Helsingfors 2025)

*163(T)/2025


2025-07-10


Finland. Archipelago Sea. Pargas. Nötö. Temporarily withdrawn leading beacons. Buoyage

Charts		Previous
24	(INT 1187)	162/2025 ↗
25	(INT 1188)	162/2025 ↗
D711, D716, D716.2		162/2025 ↗

Time: to approx. 31 October 2025

1
 The structures of the leading beacons has been withdrawn during the repair work. Vessels navigating in the area are advised to avoid creating wash in the vicinity of the work vessels, since 28 August 2025.

2	24, 25, D711, D716, D716.2				
Delete		Front	59°57.227'N	21°42.995'E	3207

3	24, 25, D711, D716, D716.2				
Delete		Rear	59°57.870'N	21°44.769'E	3208

(Traficom, Helsinki/Helsingfors 2025)

*164/2025

2025-07-10

Finland. Archipelago Sea. Kimitoön. Kalvören. ODAS buoy withdrawn. Buoyage

Charts		Previous
22	(INT 1254)	271/2024 ↗
B645		161/2025 ↗

1	22, B645				
Delete			59°54.228'N	22°37.584'E	

(Ilmatieteen laitos/Meteorologiska institutet/Finnish Meteorological Institute, Helsinki/Helsingfors 2025)

Bothnian Sea

165(T)/2025

2025-07-10

Sweden. Bothnian Sea. E of Söderhamn. Light Hällgrund extinguished.
Buoyage

Charts

955

Previous

157/2025 [↗](#)

Time: to approx.17 August 2025

1

Light Hällgrund extinguished. Light may be unlit and replaced with temporary light VQ Y.
Racon might be unreliable during the working period.

2

955

Amend



HÄLLGRUND
LFI(2)WRG.15s
(exting)

61°16.6'N

17°23.8'E

(Ufs 1074/19399(T), Norrköping 2025)

*166/2025

2025-07-10

Finland. Bothnian Sea. Rauma. Ulko-Petäjäs. Cables and pipelines

Charts

41

(INT 1132)

Previous

147/2025 [↗](#)

127, 127.A

(INT 11321)

147/2025 [↗](#)

805, 805.A

147/2025 [↗](#)

1

41, 127, 127.A, 805, 805.A

(1) 61°08.219'N 21°25.784'E

(2) 61°08.276'N 21°25.383'E

(3) 61°08.149'N 21°24.374'E

Add

Between the following
positions:

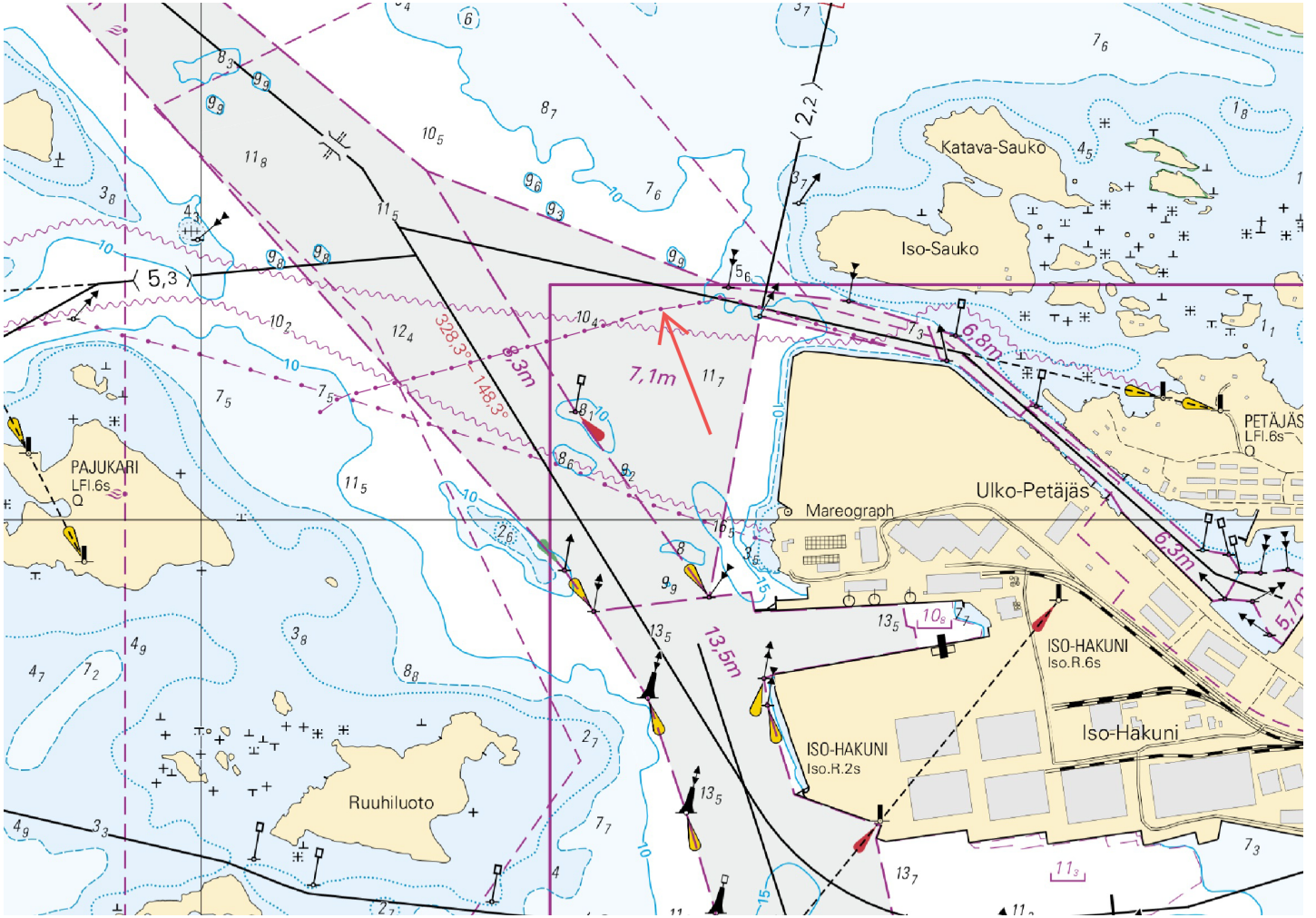


Image for reference, chart extracts not to scale of chart.

(Rauman kaupunki, Raumo stad 2025)

Vuoksi watercourse

*167/2025

2025-07-10

Finland. Vuoksi watercourse. Leppävirta. Kinkamonselkä. Obstructions

Charts

M231

Previous

159/2025 [↗](#)

1

M231

Add



Obstn

62°21.127'N

27°59.507'E

2

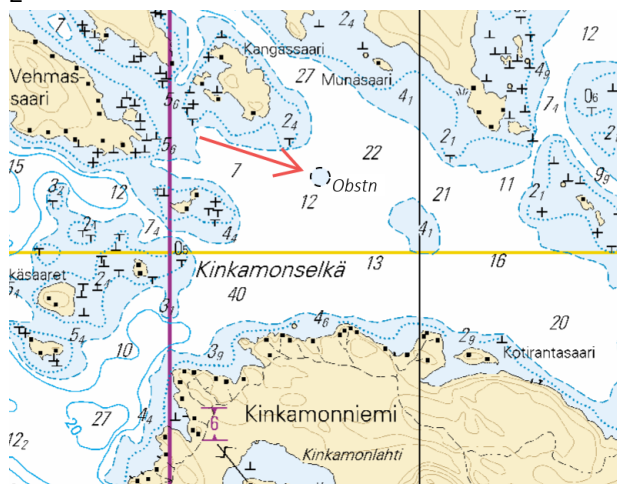


Image for reference, chart extracts not to scale of chart.

(Traficom, Helsinki/Helsingfors 2025)

Current Preliminary (P) and Temporary (T) notices (10.07.2025)

Gulf of Finland

T&P	Charts	Gulf of Finland
174(T)/2019 🔗	951	SE of Bol'soj Tjuters. Obstructions
296(T)/2020 🔗	17, 18, 191, 952, A, B	Helsinki. Sipoo. Areas and borders
20(T)/2021 🔗	951, A	TSS OFF ROOSHER ISLAND. Lighthouse Rodser extinguished. Notice repeated. Buoyage
228(T)/2021 🔗	951, A	Krestovyy. Lighthouse Krestovyy extinguished. Notice repeated. Buoyage
65(T)/2022 🔗	A, S	Vyborg. Destroyed leading beacon. Notice repeated. Buoyage
66(T)/2022 🔗	A, S	Vyborg. Light extinguished. Notice repeated. Buoyage
86(T)/2022 🔗	18, 191, 952, A, B	Helsinki. Kruunuvuori. Restrictions on small craft traffic. Fairways
90(T)/2022 🔗	951	Tiskolovo. Lighthouse Kajbolovo. Buoyage
230(T)/2023 🔗	18, 191, A, B	Helsinki. Hernesaari. Buoyage. Areas and borders
194(T)/2024 🔗	18, 191, A, B	Helsinki. Sompasaari. Buoyage
78(T)/2025 🔗	15, 16	Loviisa. SE of Lighthouse Tiiskeri. ODAS spar buoy. Buoyage
103(T)/2025 🔗	951, 952	E of lighthouse Kallbådagrund. Maintenance work. Areas and borders
129(T)/2025 🔗	952, A, B	Off Tallinn. Lighthouse Vahemadal extinguished. Buoyage
130(T)/2025 🔗	18, 191, A, B	Helsinki. Hernesaari. Notice repeated. Buoyage
143(T)/2025 🔗	18, 191, A, B	Helsinki. S of Vallisaari. Temporarily withdrawn remark. Buoyage

Archipelago Sea

T&P	Charts	Archipelago Sea
189(T)/2023 🔗	26, D	Pargas. Kirjala...Restrictions on traffic. Areas and borders
40(T)/2024 🔗	26, 190, D	Naantali. Raumakari. Särkäsalmi. Kirkonsalmi. Notice repeated. Buoyage
130(T)/2024 🔗	27, D	Pargas. S of Utö. ODAS buoy. Buoyage
168(T)/2024 🔗	25, 26, 37, D	Pargas. Seili. ODAS buoy. Buoyage
239(T)/2024 🔗	27, 167, D	S of Utö. Söderdjupet. Measuring equipment on seabed. Areas and borders
267(T)/2024 🔗	26, 190, D	Port of Turku. Construction works. Areas and borders
162(T)/2025 🔗	24, 25, D	Pargas. S of Nagu. Temporarily withdrawn edge marks. Buoyage
163(T)/2025 🔗	24, 25, D	Pargas. Nötö. Temporarily withdrawn leading beacons. Buoyage

Aland Sea

T&P	Charts	Aland Sea
97(T)/2025 ↗	32, 160, C	Mariehamn. Lemströms canal...Notice repeated. Areas and borders

Bothnian Sea

T&P	Charts	Bothnian Sea
6(T)/2025 ↗	42, 125	Pori. Tahkoluoto. Notice repeated. Buoyage
157(T)/2025 ↗	953, 955, 8031	NE of Grundkallen. Diving works. Areas and borders
165(T)/2025 ↗	955	E of Söderhamn. Light Hällgrund extinguished. Buoyage

The Quark

T&P	Charts	The Quark
238(T)/2022 ↗	48, 115, 921, F, M	Vaasa. Vaskiluoto. Notice repeated. Buoyage
247(T)/2024 ↗	48, 820, 956, 957	Vaasa. Johansson. Buoyage
262(T)/2024 ↗	48, 115, 820	Vaasa. Vaskiluoto. (N2000) (BSCD2000). Buoyage. Fairway areas
279(T)/2024 ↗	48, 115, 820, 957, 8061, 8065	Vaasa. Vaskiluoto. Buoyage. Fairway areas
79(T)/2025 ↗	48, 115, 820, 956, 957	Vaasa. Dredging operations. Areas and borders
112(T)/2025 ↗	48, 115, 820, 956, 957	Port of Vasa. Channel to Vasa. Areas and borders

Bay of Bothnia

T&P	Charts	Bay of Bothnia
145(T)/2024 ↗	57, 846, 958, 8071	Hailuoto. Bridge construction work. Areas and borders
164(T)/2024 ↗	57, 119, 846	Oulu. Pikisaari. Fairways
3(T)/2025 ↗	57, 60, 848, 958	Off Oulu. SW of Lighthouse Oulu 1. Lost buoy. Virtual AIS. Buoyage
83(T)/2025 ↗	57, 846	Hailuoto. Boating passages at the Riutunkari and Huikku bridges.
104(T)/2025 ↗	55, 119, 838, 839	Port of Raahе. Dredging operations. Areas and borders
117(T)/2025 ↗	59, 854	Off Tornio. Maintenance of aids to navigation. Buoyage

Vuoksi watercourse

T&P	Charts	Vuoksi watercourse
214(T)/2020 ↗		Leppävirta. Hyvärilä. Buoyage
64(T)/2025 ↗	L	Lappeenranta. Muukonsaari. Buoyage
72(T)/2025 ↗	M	Varkaus. Kortesaaret. Buoyage

Kymijoki watercourse

T&P	Charts	Kymijoki watercourse
-	-	

Kokemäijoki watercourse

T&P	Charts	Kokemäijoki watercourse
-	-	

Oulujoki watercourse

T&P	Charts	Oulujoki watercourse
-	-	

Paatsjoki watercourse

T&P	Charts	Paatsjoki watercourse
-	-	

Saimaa Canal

T&P	Charts	Saimaa Canal
-	-	

Northern Baltic

T&P	Charts	Northern Baltic
11(T)/2024 ↗	952, 953, 954	Hiiumaa. Tahkuna. Light Lehtma extinguished. Buoyage

Announcements

T&P	Charts	Announcements
137(T)/2023 ↗		Helsinki. Korkeasaari...Restrictions on small craft traffic
102(T)/2024 ↗		Pargas. Hessund. Bridge construction work.
86(T)/2025 ↗		Helsinki. Hevossalmi.