



Notices to Mariners

NtM 1/2025

Notices: 1 - 7 / 10.01.2025



Table of Contents

Title	Page
Index by Area	2
Index by Chart	3
Gulf of Finland	4
Archipelago Sea	5
Bothnian Sea	6
Bay of Bothnia	7
Announcements	9
Current Preliminary (P) and Temporary (T) notices (10.01.2025)	10

Index by Area

Gulf of Finland

Charts

2/2025	952, A, B
--------	-----------

Archipelago Sea

Charts

*4(T)/2025	23, B
------------	-------

*5(T)/2025	28, C
------------	-------

Bothnian Sea

Charts

*6(T)/2025	42, 125
------------	---------

Bay of Bothnia

Charts

*3(T)/2025	57, 60, 848, 958
------------	------------------

*7(T)/2025	60
------------	----

Announcements

Charts

*1/2025	
---------	--

Index by Chart

Charts	Notices
23	*4(T)/2025
28	*5(T)/2025
42	*6(T)/2025
57	*3(T)/2025
60	*3(T)/2025, *7(T)/2025
125	*6(T)/2025
848	*3(T)/2025
952	2/2025
958	*3(T)/2025
A	2/2025
B	2/2025, *4(T)/2025
C	*5(T)/2025

Gulf of Finland


2/2025

2025-01-10

Estonia. Gulf of Finland. Viimsi poolsaar. The leading beacon Viimsi in operation. Buoyage

Charts	Previous
952	275/2024 ↗
A/Helsinki - Tallinna	284/2024 ↗
B/Helsinki - Tallinn	287/2024 ↗

Cancelled: 216(T)/2024 [↗](#)

1	952, A/Helsinki - Tallinna, B/Helsinki - Tallinn			
Add	 VIIMSI	Front	59°30.93'N	24°48.94'E

2
More information: <https://transpordiamet.ee/NtM>

(NtM 1/003, Tallinn 2025)

Archipelago Sea



*4(T)/2025

2025-01-10

Finland. Archipelago Sea. Kimitoön. Padva. Light Padvagrundet extinguished. Buoyage

Charts		Previous
23	(INT 1186)	228/2024 ↗
B639		2/2025 ↗

Time: Until further notice

1		23, B639			
Amend		Sector light			
					
	PADVAGRUNDET		59°59.00'N	22°46.80'E	20450, C4869.08
	Q(2)WRG.6s				
	(exting)				

(Traficom, Helsinki/Helsingfors 2025)

*5(T)/2025

2025-01-10

Finland. Archipelago Sea. Sottunga. Light Bogskär extinguished. Buoyage

Charts		Previous
28	(INT 1191)	261/2024 ↗
C740		261/2024 ↗

Time: Until further notice

1		28, C740			
Amend		Sector light			
					
	BOGSKÄR		60°04.54'N	20°55.50'E	6292, (C4628)
	FI.WRG.5s				
	(exting)				

(Traficom, Helsinki/Helsingfors 2025)

Bothnian Sea

*6(T)/2025

2025-01-10

Finland. Bothnian Sea. Pori. Tahkoluoto. Notice repeated. Buoyage

Charts		Previous
42	(INT 1133)	248/2024 ↗
125	(INT 1151)	248/2024 ↗

Time: to approx. 31 December 2025

References: [54/2024 ↗](#)

Cancelled: [8\(T\)/2024 ↗](#)

1	42, 125			
Add	 V-AIS	61°38.506'N	21°24.338'E	87996

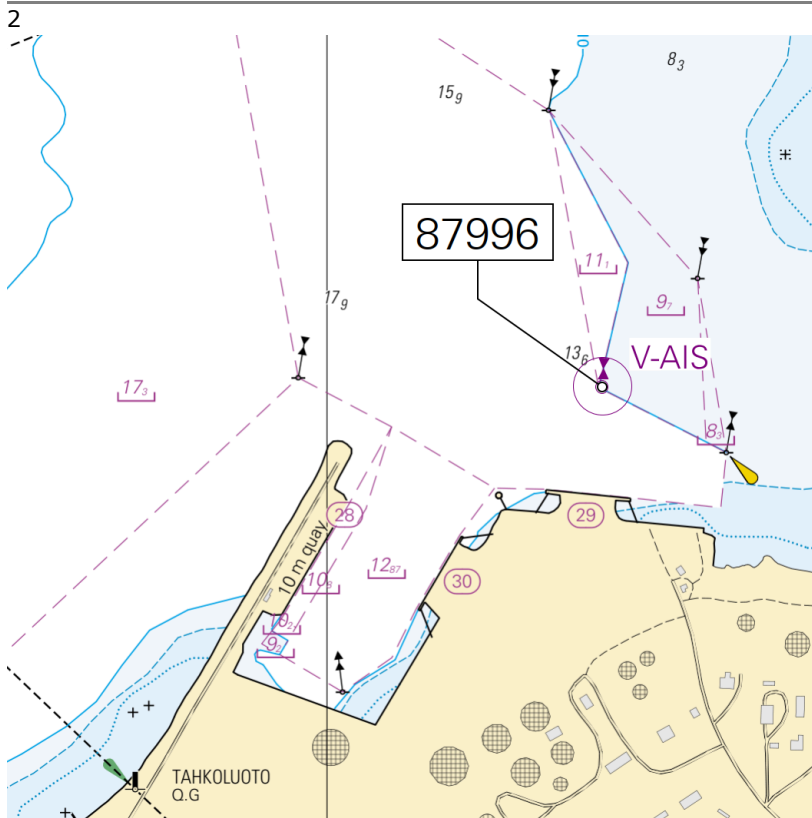


Image for reference, chart extracts not to scale of chart.

(Traficom, Helsinki/Helsingfors 2025)

Bay of Bothnia

*3(T)/2025

2025-01-10

Finland. Bay of Bothnia. Off Oulu. SW of Lighthouse Oulu 1. Lost buoy. Virtual AIS. Buoyage

Charts		Previous
57	(INT 1148)	270/2024 ↗
60	(INT 1152)	257/2024 ↗
848		264/2024 ↗
958	(INT 1209)	264/2024 ↗

Time: Until further notice

1 57, 60, 848, 958

Amend    V-AIS 65°10.537'N 24°27.018'E
(dest)

(Traficom, Helsinki/Helsingfors 2025)

*7(T)/2025

2025-01-10


Finland. Bay of Bothnia. Kemi. NE of Lighthouse Kemi 1. Construction works. Winter break. Areas and borders

Charts		Previous
60	(INT 1152)	3/2025 ↗

Time: Until further notice

Cancelled: 175(T)/2024 [↗](#)

1
Construction work of ramark in the area marked in the chartlet. Winter break. Work continues in Spring. Visible part of the structure about 1.5-2m above sea level.

2 60
Add  Structure of Ramark 65°25.466'N 24°16.948'E

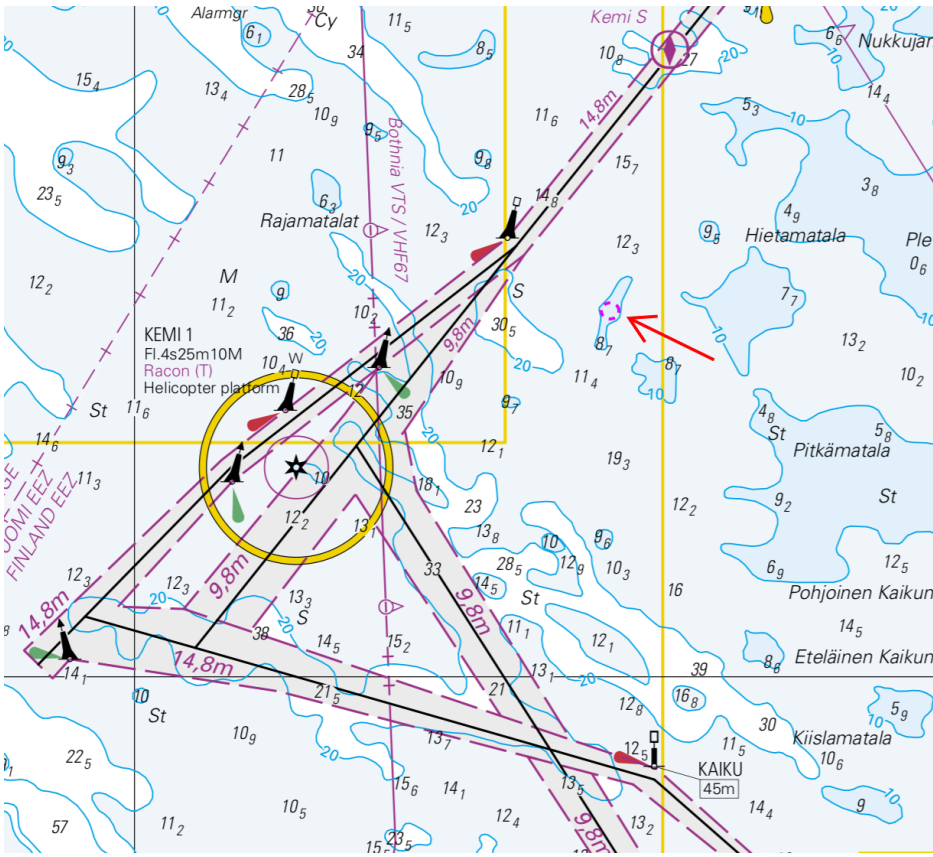


Image for reference, chart extracts not to scale of chart.

(Traficom, Helsinki/Helsingfors 2025)

Announcements

*1/2025

2025-01-10

Finland. Global navigation satellite systems disturbance. Notice repeated.

Charts

Previous

References: [127/2024](#), [282/2024](#)

1

GNSS interference in waterborne transport

GNSS interference in the Gulf of Finland began at the end of April, and signal disruptions are still observed in waterborne transport. Reports of interference have been particularly frequent in the eastern parts of the Gulf of Finland.

Interference affects the reliability of positioning by disrupting GNSS reception. When interference occurs, mariners cannot fully trust widely used GNSS-based navigation systems but have to rely on back-up systems instead.

If interference remains undetected, the risks caused by positioning errors increase, particularly in the narrow channels in the archipelago and in poor visibility. Interference is easier to detect when radar and electronic navigational charts are used simultaneously with radar image overlaid on the chart. The skills and professional competence of the crew are highlighted in the event of GNSS issues. If GNSS positioning data is lost, nautical charts, compasses and radars can still be used for navigation.

Fintraffic Vessel Traffic Services (VTS) have updated their instructions on how to operate in the event of GNSS interference. The VTS centre supports ships and gives ships arriving in the VTS area all the information they need for safe navigation, including information about any GNSS issues.

The Finnish Transport and Communications Agency Traficom's website includes a situational picture of interference in satellite navigation services in Finland.

<https://tieto.traficom.fi/en/statistics/satellite-navigation-service-interference-finland>

Any radio interference observed at sea should always be reported to Traficom:

<https://traficom.fi/en/notifications-radio-interference>

(Traficom, Helsinki/Helsingfors 2025)

Current Preliminary (P) and Temporary (T) notices (10.01.2025)

Gulf of Finland

T&P	Charts	Gulf of Finland
174(T)/2019 ↗	951	SE of Bol'soj Tjuters. Obstructions
296(T)/2020 ↗	17, 18, 191, 952, A, B	Helsinki. Sipoo. Areas and borders
20(T)/2021 ↗	951, A	TSS OFF ROOSHER ISLAND. Lighthouse Rodser extinguished. Notice repeated. Buoyage
228(T)/2021 ↗	951, A	Krestovyy. Lighthouse Krestovyy extinguished. Notice repeated. Buoyage
304(T)/2021 ↗	18, 192, A, B	Helsinki. Vuosaari. Notice repeated. Buoyage. Areas and borders
65(T)/2022 ↗	A, S	Vyborg. Destroyed leading beacon. Notice repeated. Buoyage
66(T)/2022 ↗	A, S	Vyborg. Light extinguished. Notice repeated. Buoyage
86(T)/2022 ↗	18, 191, 952, A, B	Helsinki. Kruunuvuori. Restrictions on small craft traffic. Fairways
90(T)/2022 ↗	951	Tiskolovo. Lighthouse Kajbolovo. Buoyage
229(T)/2023 ↗	18, 191, A, B	Helsinki. Hernesaari. Buoyage
230(T)/2023 ↗	18, 191, A, B	Helsinki. Hernesaari. Buoyage. Areas and borders
35(T)/2024 ↗	14, 138, A	Kotka. Lehmäsaari. Destroyed leading light. Buoyage
52(T)/2024 ↗	952, A, B	Prangli. Kelnase. Construction works. Areas and borders
80(T)/2024 ↗	18, 952, A, B	SW of Helsinginmatala. ODAS spar buoy. Buoyage
194(T)/2024 ↗	18, 191, A, B	Helsinki. Sompasaari. Buoyage
230(T)/2024 ↗	18, 191, A, B	Helsinki. Melkki. Light Melkki extinguished. Buoyage
238(T)/2024 ↗	17, 952, A	Off Porvoo. Lighthouse Porvoon majakka unlit. Buoyage
284(T)/2024 ↗	18, 191, A, B	Helsinki. Hakaniemi. Bridge construction work. Areas and borders

Archipelago Sea

T&P	Charts	Archipelago Sea
189(T)/2023 ↗	26, D	Pargas. Kirjala...Restrictions on traffic. Areas and borders
40(T)/2024 ↗	26, 190, D	Naantali. Raumakari. Särkänsalmi. Kirkonsalmi. Notice repeated. Buoyage
74(T)/2024 ↗	27, 167, D	Pargas. S of Utö. ODAS buoy. Buoyage
130(T)/2024 ↗	27, D	Pargas. S of Utö. ODAS buoy. Buoyage
168(T)/2024 ↗	25, 26, 37, D	Pargas. Seili. ODAS buoy. Buoyage
239(T)/2024 ↗	27, 167, D	S of Utö. Söderdjupet. Measuring equipment on seabed. Areas and borders
250(T)/2024 ↗	26, D	Pargas. Hessund...Restrictions on traffic. Areas and borders
267(T)/2024 ↗	26, 190, D	Port of Turku. Construction works. Areas and borders
4(T)/2025 ↗	23, B	Kimitoön. Padva. Light Padvagrundet extinguished. Buoyage
5(T)/2025 ↗	28, C	Sottunga. Light Bogskär extinguished. Buoyage

Aland Sea

T&P	Charts	Aland Sea
97(T)/2024 ↗	32, 160, C	Mariehamn. Lemströms canal...Restrictions on traffic. Areas and borders
155(T)/2024 ↗	31, 935, C	TSS SOUTH ÅLAND SEA. Light Flötjan extinguished. Buoyage

Bothnian Sea

T&P	Charts	Bothnian Sea
30(T)/2022 ↗	41, 127, E	Rauma. Ulko-Petäjäs. Areas and borders
160(T)/2022 ↗	41, 127, E	Rauma. Otanlahti. Flytande ö. Obstructions
95(T)/2024 ↗	42, 125, 955, E	Pori. Tahkoluoto. Lighthouse Kaijakari extinguished. Buoyage
121(T)/2024 ↗	45, 46, 815, 816	Korsnäs. Measuring equipment on seabed. Obstructions
6(T)/2025 ↗	42, 125	Pori. Tahkoluoto. Notice repeated. Buoyage

The Quark

T&P	Charts	The Quark
238(T)/2022 ↗	48, 115, 921, F, M	Vaasa. Vaskiluoto. Notice repeated. Buoyage
126(T)/2023 ↗	48, 115, 820	Vaasa. Vaskiluoto. Dredging operations. Areas and borders
256(T)/2023 ↗	48, 115, 820	Vaasa. Vaskiluoto. Dredging operations. Notice repeated. Areas and borders
62(T)/2024 ↗	48, 819, 822, 956, 957, 8061, 8065	Korsholm. W of Replot. Lighthouse Vaasan Majakka extinguished. Buoyage
247(T)/2024 ↗	48, 820, 956, 957	Vaasa. Johansson. Buoyage
262(T)/2024 ↗	48, 115, 820	Vaasa. Vaskiluoto. (N2000) (BSCD2000). Buoyage. Fairway areas
279(T)/2024 ↗	48, 115, 820, 957, 8061, 8065	Vaasa. Vaskiluoto. Buoyage. Fairway areas

Bay of Bothnia

T&P	Charts	Bay of Bothnia
263(T)/2023 ↗	55, 119, 838, 839, 958, 8071	Raahe. Light Heikinkari extinguished. Buoyage
144(T)/2024 ↗	57, 846	Oulu. Pajuniemi. Buoyage
145(T)/2024 ↗	57, 846, 958, 8071	Hailuoto. Bridge construction work. Areas and borders
164(T)/2024 ↗	57, 119, 846	Oulu. Pikisaari. Fairways
197(T)/2024 ↗	57, 119, 845, 846	Oulu. Port of Oulu. Dredging operations. Areas and borders
270(T)/2024 ↗	57, 846	Hailuoto. Channel section closed for the winter season. Areas and borders
3(T)/2025 ↗	57, 60, 848, 958	Off Oulu. SW of Lighthouse Oulu 1. Lost buoy. Virtual AIS. Buoyage
7(T)/2025 ↗	60	Kemi. NE of Lighthouse Kemi 1...Winter break. Areas and borders

Vuoksi watercourse

T&P	Charts	Vuoksi watercourse
268(T)/2019 ↗	M	Kuopio. Kotkatniemi. Buoyage
214(T)/2020 ↗		Leppävirta. Hyvärilä. Buoyage
90(T)/2023 ↗	921, M	Kuopio. Light Sotkanselkä operational. Notice repeated. Buoyage

Kymijoki watercourse

T&P	Charts	Kymijoki watercourse
-	-	

Kokemäijoki watercourse

T&P	Charts	Kokemäijoki watercourse
-	-	

Oulujoki watercourse

T&P	Charts	Oulujoki watercourse
-	-	

Paatsjoki watercourse

T&P	Charts	Paatsjoki watercourse
-	-	

Saimaa Canal

T&P	Charts	Saimaa Canal
254(T)/2024 ↗		Saimaa Canal closed for the winter season.

Northern Baltic

T&P	Charts	Northern Baltic
11(T)/2024 ↗	952, 953, 954	Hiiumaa. Tahkuna. Light Lehtma extinguished. Buoyage

Announcements

T&P	Charts	Announcements
291(T)/2022 ↗		Bay of Bothnia. Off Oulu. V-AIS. Notice repeated.
137(T)/2023 ↗		Helsinki. Korkeasaari...Restrictions on small craft traffic
102(T)/2024 ↗		Pargas. Hessund. Bridge construction work.