



Notices to Mariners

NtM 20/2025

Notices: 168 - 175 / 20.07.2025



Table of Contents

Title	Page
Index by Area	2
Index by Chart	3
Gulf of Finland	4
Archipelago Sea	6
Bay of Bothnia	7
Vuoksi watercourse	13
Current Preliminary (P) and Temporary (T) notices (18.07.2025)	15

Index by Area

Gulf of Finland

Charts

*168/2025	20, B
*169/2025	18, 191, 952, A, B

Archipelago Sea

Charts

*170/2025	26, D
-----------	-------

Bay of Bothnia

Charts

*171/2025	55, 119, 838, 839
*172/2025	58, 60, 852
*173/2025	59, 853, 958, 8071
*174/2025	59, 853

Vuoksi watercourse

Charts

*175/2025	M
-----------	---

Index by Chart

Charts	Notices
18	*169/2025
20	*168/2025
26	*170/2025
55	*171/2025
58	*172/2025
59	*173/2025, *174/2025
60	*172/2025
119	*171/2025
191	*169/2025
838	*171/2025
839	*171/2025
852	*172/2025
853	*173/2025, *174/2025
952	*169/2025
958	*173/2025
8071	*173/2025
A	*169/2025
B	*168/2025, *169/2025
D	*170/2025
M	*175/2025

Gulf of Finland

*168/2025

2025-07-18

Finland. Gulf of Finland. Raseborg. Rösund. Buoyage

Charts

20

B633

(INT 1252)

Previous

161/2025 [↗](#)

164/2025 [↗](#)

1

20, B633

Add



59°56.212'N

23°40.711'E

89277

2

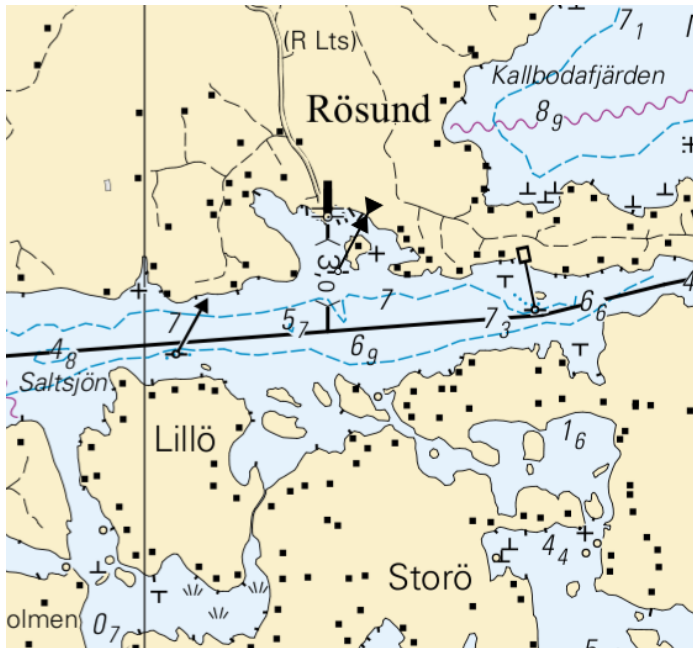


Image for reference, chart extracts not to scale of chart.

(Traficom, Helsinki/Helsingfors 2025)

Archipelago Sea

*170/2025

2025-07-18

Finland. Archipelago Sea. Turku. Raunistula. Cultural Features. Vertical Clearances

Charts

26

(INT 1189)

Previous

146/2025 [↗](#)

D706

163/2025 [↗](#)




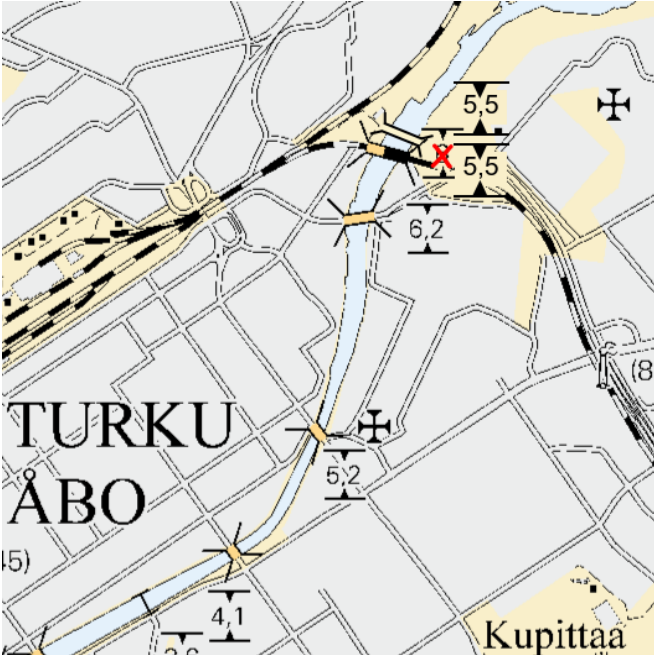
		26, D706		
1	Amend			60°27.65'N 22°16.77'E
2	Add		Between the following positions:	(1) 60°27.668'N 22°16.846'E (2) 60°27.690'N 22°16.756'E
3	Add			60°27.68'N 22°16.80'E
4				

Image for reference, chart extracts not to scale of chart.

(Traficom, Helsinki/Helsingfors 2025)

Bay of Bothnia

*171/2025

2025-07-18

Finland. Bay of Bothnia. Raahe. Buoyage

Charts

Chart	Reference	Previous
55	(INT 1146)	104/2025 ↗
119.A	(INT 11461)	137/2025 ↗
838		104/2025 ↗
839, 839.A		104/2025 ↗

1	55, 119.A, 838, 839, 839.A				
Delete	↓	Front	64°38.951'N	24°23.988'E	9651

2	55, 119.A, 838, 839, 839.A				
Delete	↓	Rear	64°38.691'N	24°24.389'E	9652

3	55, 119.A, 838, 839, 839.A				
Delete	— — — —	Leading line between the following positions:	(1) 64°38.691'N	24°24.389'E	
			(2) 64°39.706'N	24°22.817'E	

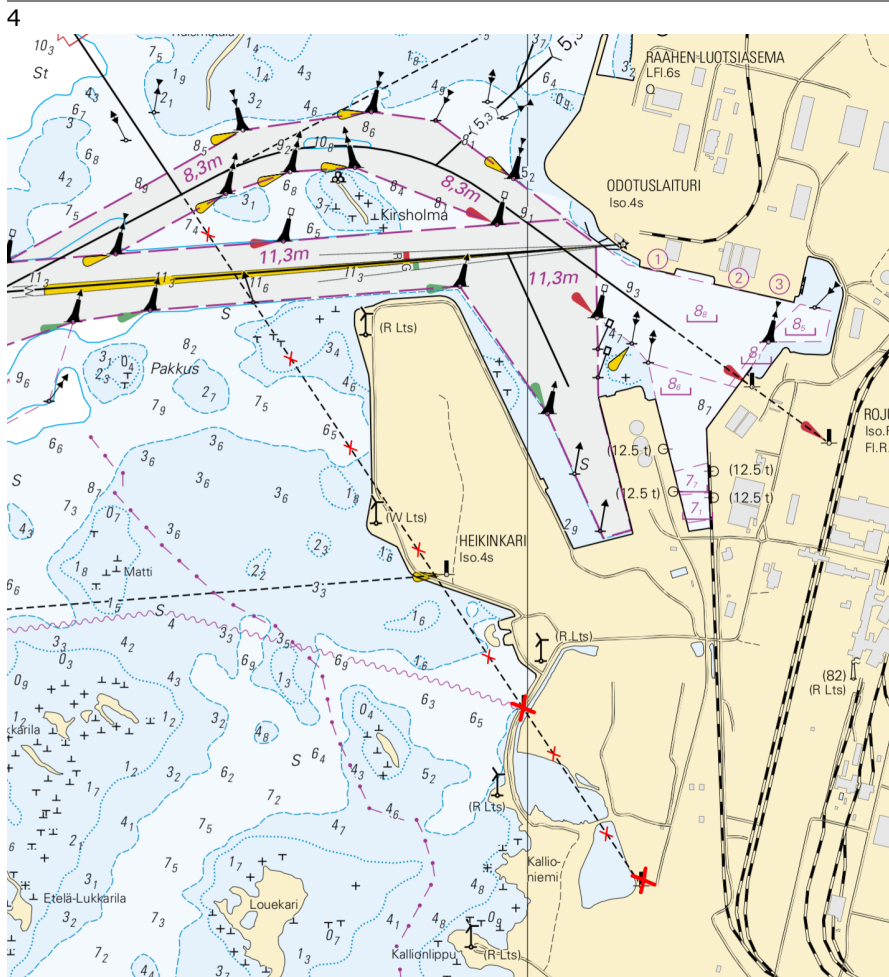


Image for reference, chart extracts not to scale of chart.

*172/2025

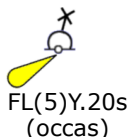
2025-07-18

Finland. Bay of Bothnia. Kemi. Nukkujanmatala. ODAS buoy. Buoyage

Charts		Previous
58	(INT 1149)	/
60	(INT 1152)	138/2025 ↗
852		210/2023 ↗

1 58, 60, 852

Add



65°29.325'N 24°20.788'E

(Ilmatieteen laitos/Meteorologiska institutet/Finnish Meteorological Institute, Helsinki/Helsingfors 2025)

*173/2025

2025-07-18

Finland. Bay of Bothnia. Simo. Buoyage. Fairways

Charts		Previous
59	(INT 1150)	117/2025 ↗
853		121/2025 ↗
958	(INT 1209)	158/2025 ↗
8071/INDEX		149/2025 ↗

1 59, 853, 958, 8071/INDEX

Amend Between the following positions:

- (1) 65°36.395'N 24°42.833'E
- (2) 65°37.502'N 24°45.200'E

2 59, 853, 958, 8071/INDEX

Amend Between the following positions:

- (1) 65°37.502'N 24°45.200'E
- (2) 65°38.837'N 24°49.645'E

3 59, 853

Move

From		
65°37.223'N	24°44.836'E	
To	65°37.259'N	24°44.575'E
		10065

4 59, 853

Amend

- (1) 65°38.332'N 24°48.294'E
 - (2) 65°38.394'N 24°48.249'E
- 10064

5 59, 853

Move



From

65°38.653'N 24°49.227'E

To

65°38.688'N 24°49.202'E 10062

6 59, 853

Move



From

65°38.685'N 24°49.042'E

To

65°38.718'N 24°49.159'E 10063

7 59, 853

Add



65°38.811'N 24°49.638'E

85741

8

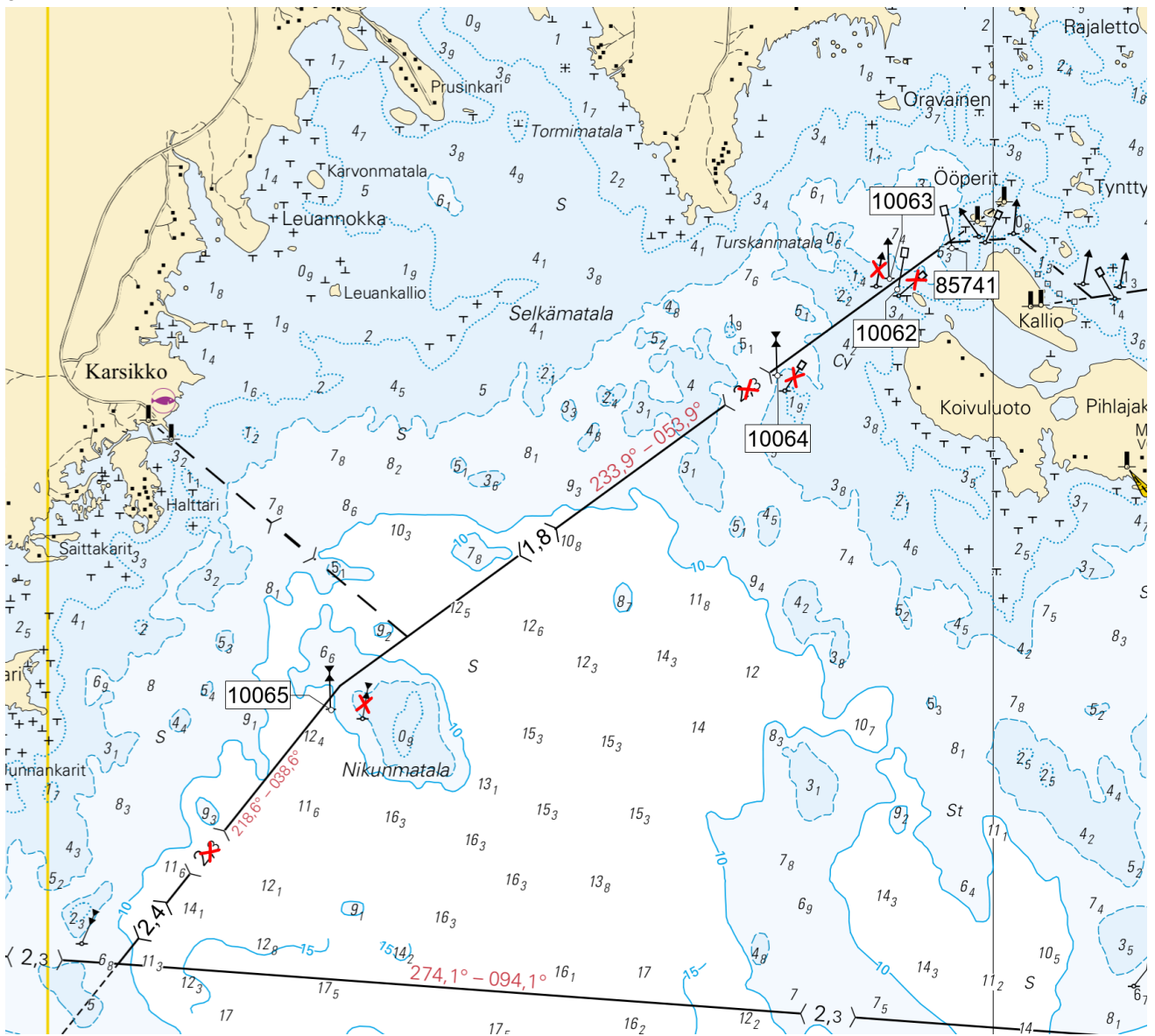


Image for reference, chart extracts not to scale of chart.

(Traficom, Helsinki/Helsingfors 2025)

*174/2025

2025-07-18

Finland. Bay of Bothnia. Simo. Buoyage. Fairways

Charts

59

(INT 1150)








Previous








173/2025 [↗](#)

853

173/2025 [↗](#)

References:121/2025 [↗](#)

No.	Chart	Description	From	To	Reference
1	59, 853	Amend —  — $\langle 1,8 \rangle$ — Between the following positions:	(1) 65°36.028'N 24°54.991'E	(2) 65°38.836'N 24°49.639'E	
2	59, 853	Add — $\langle 1,8 \rangle$ — Between the following positions: Delete former centre line	(1) 65°38.664'N 24°51.084'E	(2) 65°38.687'N 24°50.687'E	
3	59, 853	Move 	From 65°36.413'N 24°54.236'E	To 65°36.413'N 24°54.437'E	10045
4	59, 853	Move 	From 65°36.903'N 24°54.197'E	To 65°36.904'N 24°54.186'E	10048
5	59, 853	Move 	From 65°37.924'N 24°54.327'E	To 65°37.920'N 24°54.177'E	10052
6	59, 853	Move 	From 65°38.794'N 24°52.887'E	To 65°38.794'N 24°52.840'E	10053
7	59, 853	Move 	From 65°38.669'N 24°52.197'E	To 65°38.725'N 24°52.095'E	10054
8	59, 853	Move 	From 65°38.757'N 24°52.034'E	To 65°38.740'N 24°52.085'E	10055

9		59, 853			
Move					
			From	65°38.683'N	24°51.037'E
			To	65°38.679'N	24°51.043'E
					10056
10		59, 853			
Move					
			From	65°38.643'N	24°50.997'E
			To	65°38.662'N	24°50.941'E
					10057
11		59, 853			
Add					
				65°38.771'N	24°50.420'E
					85698
12		59, 853			
Add					
				65°38.782'N	24°50.435'E
					85717
13		59, 853			
Add					
				65°38.833'N	24°50.237'E
					85718
14		59, 853			
Move					
			From	65°38.863'N	24°50.167'E
			To	65°38.847'N	24°50.066'E
					10059
15		59, 853			
Move					
			From	65°38.853'N	24°49.884'E
			To	65°38.848'N	24°49.924'E
					10061

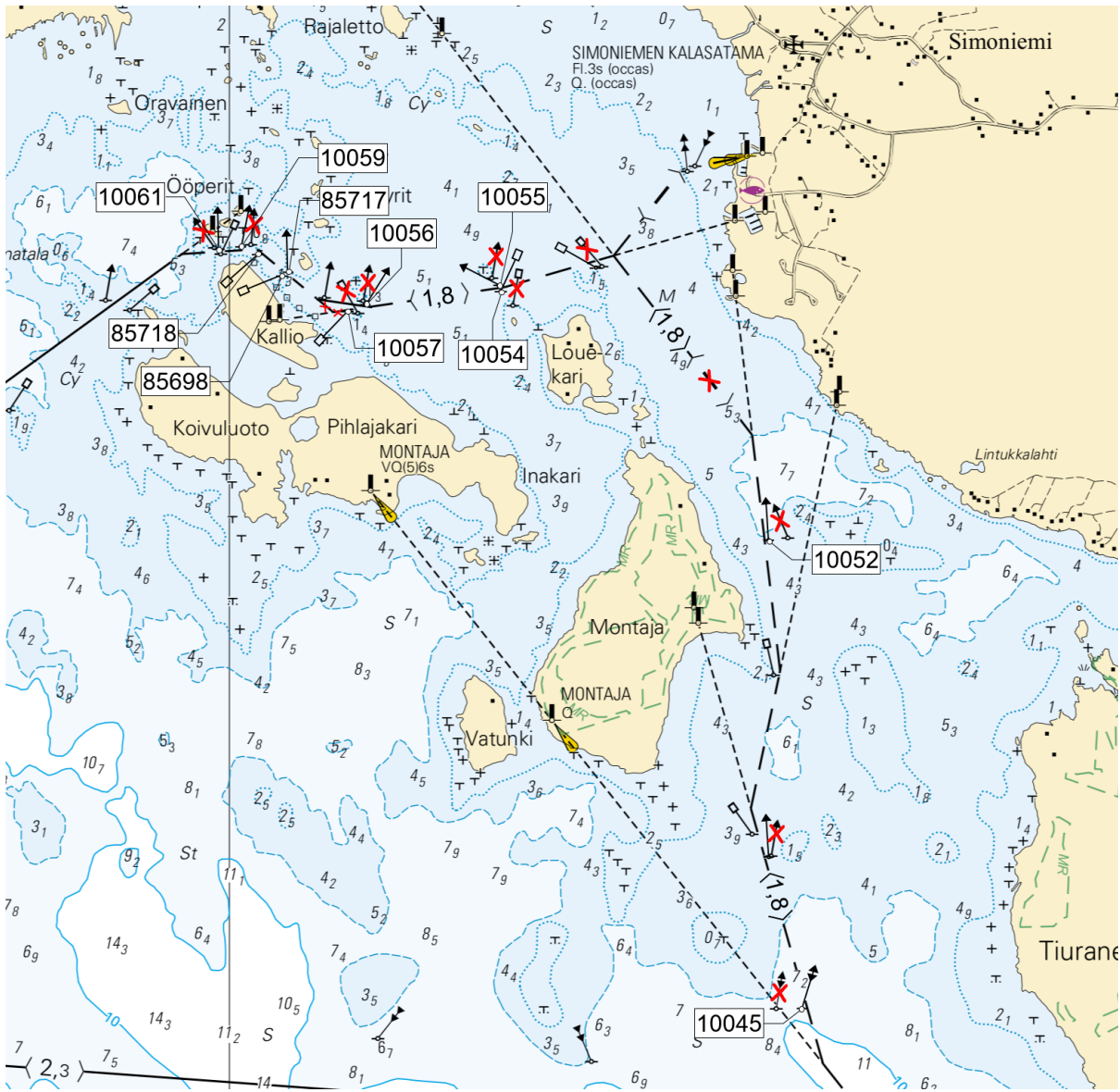


Image for reference, chart extracts not to scale of chart.

(Traficom, Helsinki/Helsingfors 2025)

Vuoksi watercourse

*175/2025

2025-07-18

Finland. Vuoksi watercourse. Leppävirta. Hyvärilä. Buoyage

Charts

M233, M233.1

Previous

167/2025 [↗](#)

Cancelled: 214(T)/2020 [↗](#)

1	M233, M233.1			
Delete 	Front			
HUMALSELKÄ Q.W		62°40.122'N	27°39.242'E	14000

2	M233, M233.1			
Delete 	Rear			
KAARTEINEN WQ(3)W.3s		62°40.589'N	27°38.613'E	14001

3	M233, M233.1			
Delete — — — —	Leading line between the following positions:	(1)	62°40.589'N	27°38.613'E
		(2)	62°39.735'N	27°39.762'E

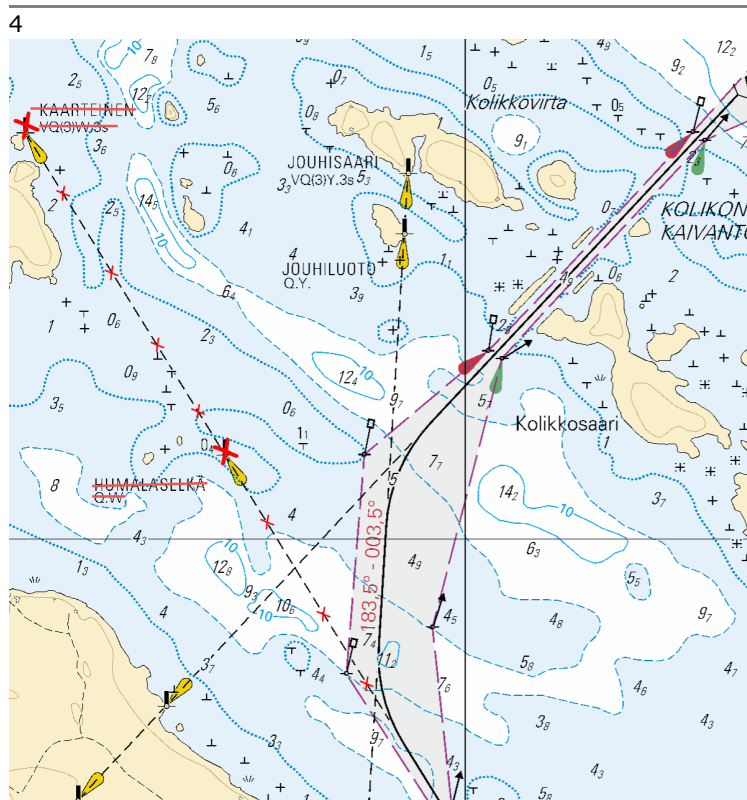


Image for reference, chart extracts not to scale of chart.

Current Preliminary (P) and Temporary (T) notices (18.07.2025)

Gulf of Finland

T&P	Charts	Gulf of Finland
174(T)/2019 🔗	951	SE of Bol'soj Tjuters. Obstructions
296(T)/2020 🔗	17, 18, 191, 952, A, B	Helsinki. Sipoo. Areas and borders
20(T)/2021 🔗	951, A	TSS OFF ROOSHER ISLAND. Lighthouse Rodser extinguished. Notice repeated. Buoyage
228(T)/2021 🔗	951, A	Krestovyy. Lighthouse Krestovyy extinguished. Notice repeated. Buoyage
65(T)/2022 🔗	A, S	Vyborg. Destroyed leading beacon. Notice repeated. Buoyage
66(T)/2022 🔗	A, S	Vyborg. Light extinguished. Notice repeated. Buoyage
86(T)/2022 🔗	18, 191, 952, A, B	Helsinki. Kruunuvuori. Restrictions on small craft traffic. Fairways
90(T)/2022 🔗	951	Tiskolovo. Lighthouse Kajbolovo. Buoyage
230(T)/2023 🔗	18, 191, A, B	Helsinki. Hernesaari. Buoyage. Areas and borders
194(T)/2024 🔗	18, 191, A, B	Helsinki. Sompasaari. Buoyage
78(T)/2025 🔗	15, 16	Loviisa. SE of Lighthouse Tiiskeri. ODAS spar buoy. Buoyage
103(T)/2025 🔗	951, 952	E of lighthouse Kallbådagrund. Maintenance work. Areas and borders
129(T)/2025 🔗	952, A, B	Off Tallinn. Lighthouse Vahemadal extinguished. Buoyage
130(T)/2025 🔗	18, 191, A, B	Helsinki. Hernesaari. Notice repeated. Buoyage
143(T)/2025 🔗	18, 191, A, B	Helsinki. S of Vallisaari. Temporarily withdrawn ramark. Buoyage

Archipelago Sea

T&P	Charts	Archipelago Sea
189(T)/2023 🔗	26, D	Pargas. Kirjala...Restrictions on traffic. Areas and borders
40(T)/2024 🔗	26, 190, D	Naantali. Raumakari. Särkäsalmi. Kirkonsalmi. Notice repeated. Buoyage
130(T)/2024 🔗	27, D	Pargas. S of Utö. ODAS buoy. Buoyage
168(T)/2024 🔗	25, 26, 37, D	Pargas. Seili. ODAS buoy. Buoyage
239(T)/2024 🔗	27, 167, D	S of Utö. Söderdjupet. Measuring equipment on seabed. Areas and borders
267(T)/2024 🔗	26, 190, D	Port of Turku. Construction works. Areas and borders
162(T)/2025 🔗	24, 25, D	Pargas. S of Nagu. Temporarily withdrawn edge marks. Buoyage
163(T)/2025 🔗	24, 25, D	Pargas. Nötö. Temporarily withdrawn leading beacons. Buoyage

Aland Sea

T&P	Charts	Aland Sea
97(T)/2025 ↗	32, 160, C	Mariehamn. Lemströms canal...Notice repeated. Areas and borders

Bothnian Sea

T&P	Charts	Bothnian Sea
6(T)/2025 ↗	42, 125	Pori. Tahkoluoto. Notice repeated. Buoyage
157(T)/2025 ↗	953, 955, 8031	NE of Grundkallen. Diving works. Areas and borders
165(T)/2025 ↗	955	E of Söderhamn. Light Hällgrund extinguished. Buoyage

The Quark

T&P	Charts	The Quark
238(T)/2022 ↗	48, 115, 921, F, M	Vaasa. Vaskiluoto. Notice repeated. Buoyage
247(T)/2024 ↗	48, 820, 956, 957	Vaasa. Johansson. Buoyage
262(T)/2024 ↗	48, 115, 820	Vaasa. Vaskiluoto. (N2000) (BSCD2000). Buoyage. Fairway areas
279(T)/2024 ↗	48, 115, 820, 957, 8061, 8065	Vaasa. Vaskiluoto. Buoyage. Fairway areas
79(T)/2025 ↗	48, 115, 820, 956, 957	Vaasa. Dredging operations. Areas and borders
112(T)/2025 ↗	48, 115, 820, 956, 957	Port of Vasa. Channel to Vasa. Areas and borders

Bay of Bothnia

T&P	Charts	Bay of Bothnia
145(T)/2024 ↗	57, 846, 958, 8071	Hailuoto. Bridge construction work. Areas and borders
164(T)/2024 ↗	57, 119, 846	Oulu. Pikisaari. Fairways
3(T)/2025 ↗	57, 60, 848, 958	Off Oulu. SW of Lighthouse Oulu 1. Lost buoy. Virtual AIS. Buoyage
83(T)/2025 ↗	57, 846	Hailuoto. Boating passages at the Riutunkari and Huikku bridges.
104(T)/2025 ↗	55, 119, 838, 839	Port of Raahе. Dredging operations. Areas and borders
117(T)/2025 ↗	59, 854	Off Tornio. Maintenance of aids to navigation. Buoyage

Vuoksi watercourse

T&P	Charts	Vuoksi watercourse
64(T)/2025 ↗	L	Lappeenranta. Muukonsaari. Buoyage
72(T)/2025 ↗	M	Varkaus. Kortesaaret. Buoyage

Kymijoki watercourse

T&P	Charts	Kymijoki watercourse
-	-	

Kokemäkijoki watercourse

T&P	Charts	Kokemäkijoki watercourse
-	-	

Oulujoki watercourse

T&P	Charts	Oulujoki watercourse
-	-	

Paatsjoki watercourse

T&P	Charts	Paatsjoki watercourse
-	-	

Saimaa Canal

T&P	Charts	Saimaa Canal
-	-	

Northern Baltic

T&P	Charts	Northern Baltic
11(T)/2024 ↗	952, 953, 954	Hiiumaa. Tahkuna. Light Lehtma extinguished. Buoyage

Announcements

T&P	Charts	Announcements
137(T)/2023 ↗		Helsinki. Korkeasaari...Restrictions on small craft traffic
102(T)/2024 ↗		Pargas. Hessund. Bridge construction work.
86(T)/2025 ↗		Helsinki. Hevossalmi.