



Notices to Mariners

NtM 21/2025

Notices: 176 - 182 / 31.07.2025



Table of Contents

Title	Page
Index by Area	2
Index by Chart	3
Gulf of Finland	4
The Quark	6
Bay of Bothnia	7
Kymijoki watercourse	9
Kokemäkijoki watercourse	10
Current Preliminary (P) and Temporary (T) notices (31.07.2025)	12

Index by Area

Gulf of Finland

Charts

*176(T)/2025	18, 191, A, B
*177/2025	952

The Quark

Charts

*178/2025	48, 115, 818, 820
-----------	-------------------

Bay of Bothnia

Charts

*179(T)/2025	52, 833, 834, 957, 8061
*180/2025	58, 59, 851, 853, 958, 8071

Kymijoki watercourse

Charts

*181/2025	321
-----------	-----

Kokemäijoki watercourse

Charts

*182/2025	P
-----------	---

Index by Chart

Charts	Notices
18	*176(T)/2025
48	*178/2025
52	*179(T)/2025
58	*180/2025
59	*180/2025
115	*178/2025
191	*176(T)/2025
321	*181/2025
818	*178/2025
820	*178/2025
833	*179(T)/2025
834	*179(T)/2025
851	*180/2025
853	*180/2025
952	*177/2025
957	*179(T)/2025
958	*180/2025
8061	*179(T)/2025
8071	*180/2025
A	*176(T)/2025
B	*176(T)/2025
P	*182/2025

Gulf of Finland

*176(T)/2025

2025-07-31

Finland. Gulf of Finland. Helsinki. West Harbour. Construction works. Restrictions on traffic. Areas and borders

Charts		Previous
18	(INT 1250)	169/2025 ↗
191	(INT 1159)	169/2025 ↗
A626, A626.1		169/2025 ↗
B626, B626.1		169/2025 ↗

Time: 4 August 2025 - to approx. 30 September 2027

1

Construction work in progress in the area marked in the chartlet. The area is marked with lit special marks. Work teams monitor VHF channels 9, 67 and 71. Mariners are requested to navigate with caution.

2

18, 191, A626, A626.1, B626, B626.1

Add 

Between the following positions:

- (1) 60°08.80'N 24°54.54'E
- (2) 60°08.84'N 24°54.54'E
- (3) 60°08.92'N 24°54.63'E
- (4) 60°08.86'N 24°54.94'E
- (5) 60°08.79'N 24°54.87'E

3

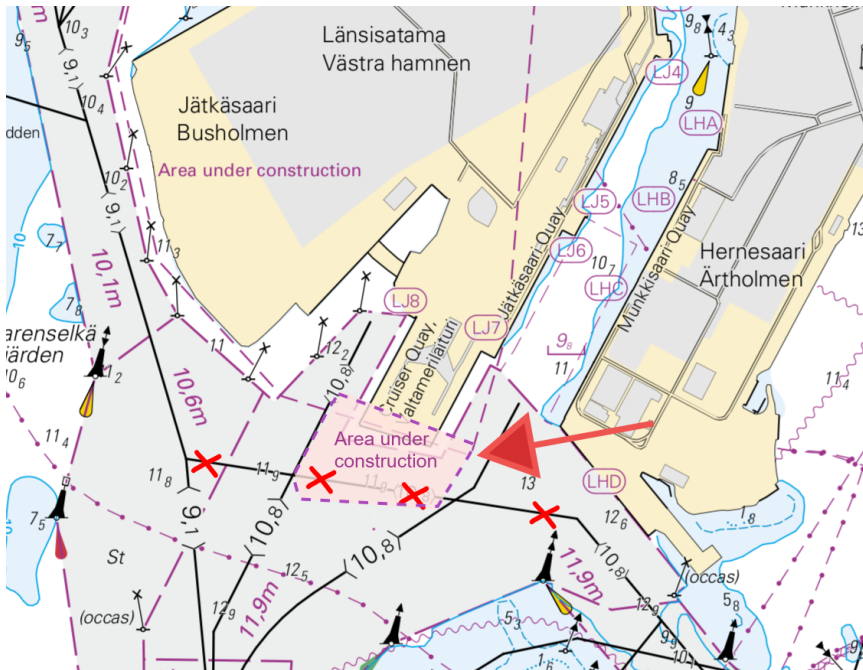


Image for reference, chart extracts not to scale of chart.

(Traficom, Helsinki/Helsingfors 2025)

*177/2025

2025-07-31

Finland. Gulf of Finland. Porvoo. SE of Lighthouse Kalbådagrund. Buoyage

Charts

952

Previous

169/2025 [↗](#)

1 952

Add



59°56.006'N

25°45.1266'E

89237

(Traficom, Helsinki/Helsingfors 2025)

The Quark

*178/2025

2025-07-31

Finland. The Quark. Vaasa. Buoyage

Charts		Previous
48	(INT 1139)	112/2025 ↗
115.B	(INT 11391)	112/2025 ↗
818		27/2024 ↗
820		112/2025 ↗

References: [79\(T\)/2025 ↗](#), [112\(T\)/2025 ↗](#)

1	48, 115.B, 820				
Delete 	Front	63°06.950'N	21°22.188'E	7416, (C4276)	

2	48, 818, 820				
Delete 	Rear	63°06.184'N	21°26.476'E	7218, (C4276.1)	

3	48, 115.B, 818, 820				
Delete — — — —	Between the following positions:	(1) 63°06.184'N	21°26.476'E		
		(2) 63°07.157'N	21°21.022'E		

4	48, 115.B, 820				
Delete 		63°06.950'N	21°22.188'E	7354, (C4276)	

(Traficom, Helsinki/Helsingfors 2025)

Bay of Bothnia

*179(T)/2025

2025-07-31

Finland. Bay of Bothnia. Kokkola. Lighthouse Kokkolan Majakka extinguished. Buoyage

Charts		Previous
52	(INT 1143)	99/2025 ↗
833		277/2024 ↗
834		99/2025 ↗
957	(INT 1208)	149/2025 ↗
8061/INDEX		149/2025 ↗

Time: to approx. 15 September 2025

1
The light of the lighthouse is inoperative during the repair work.

2 52, 833, 834, 957, 8061/INDEX

Add


KOKKOLAN
MAJAKKA
Fl(2)WRG.10s
(exting)

63°59.82'N 22°51.82'E 9071, (C4203)

(Traficom, Helsinki/Helsingfors 2025)

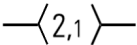

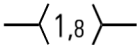
*180/2025

2025-07-31

Finland. Bay of Bothnia. Ii. Vatunginnokka. Buoyage. Fairways

Charts		Previous
58	(INT 1149)	172/2025 ↗
59	(INT 1150)	174/2025 ↗
851		/
853		174/2025 ↗
958	(INT 1209)	173/2025 ↗
8071/INDEX		173/2025 ↗

1 58, 59, 851, 853, 958, 8071/INDEX

Amend    Between the following positions:

(1) 65°32.655'N 25°01.420'E
(2) 65°33.052'N 25°05.997'E

2 58, 59, 851, 853

Move



From

65°32.692'N 25°02.183'E

To

65°32.698'N 25°02.065'E 10029

3 Add 58, 59, 851, 853 65°32.989'N 25°05.062'E 85738

4 Add 58, 59, 851, 853 65°32.952'N 25°05.077'E 85739

5 Move 58, 59, 851, 853

From	65°33.071'N	25°05.807'E	
To	65°33.044'N	25°05.781'E	10023

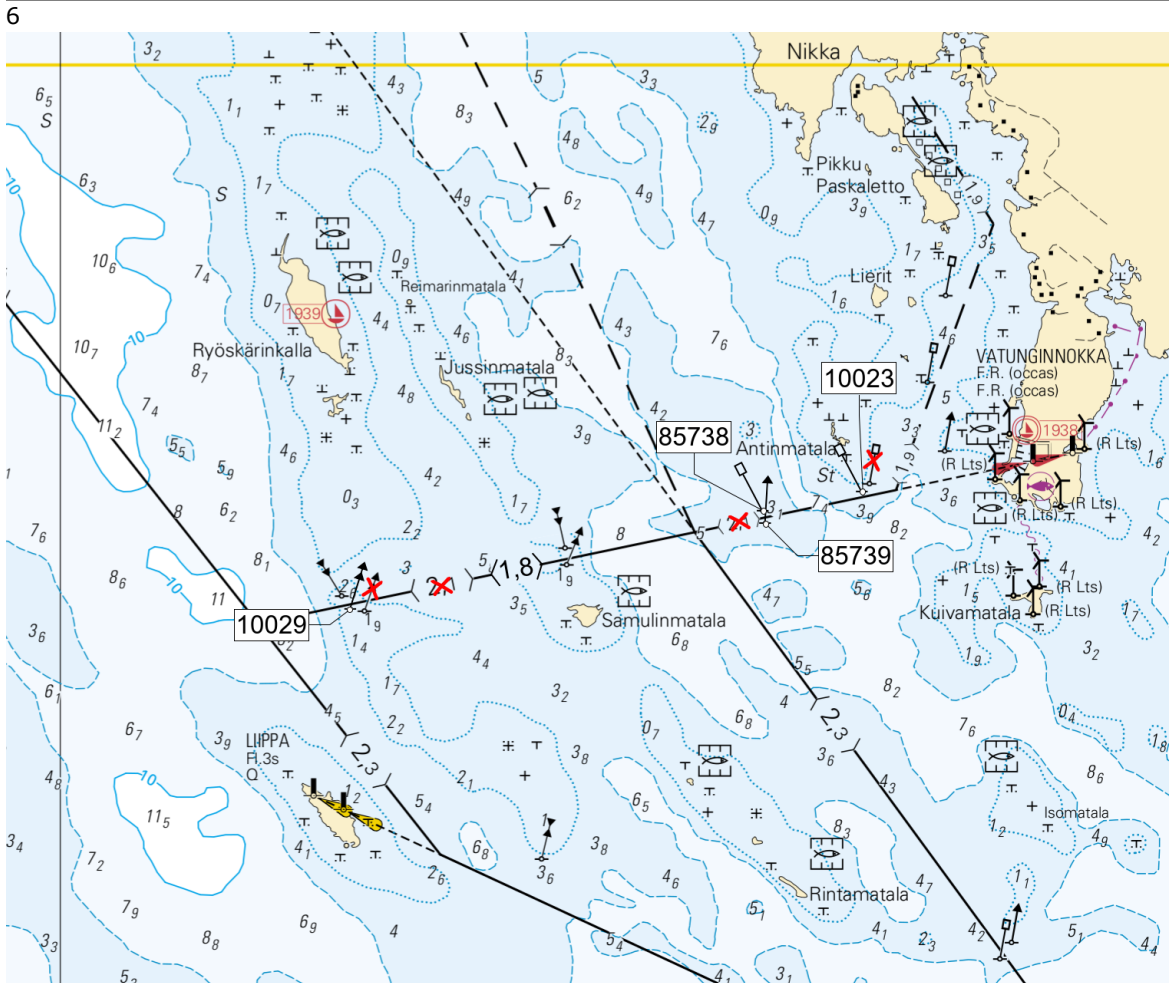


Image for reference, chart extracts not to scale of chart.

(Traficom, Helsinki/Helsingfors 2025)

Kymijoki watercourse

*181/2025

2025-07-31

Finland. Kymijoki watercourse. Jyväskylä. Korpilahti. Pyssysaari. Buoyage

Charts

321, 321.B

Previous

125/2025 [↗](#)

1

321, 321.B

Add



61°59.994'N

25°39.205'E

89267

2

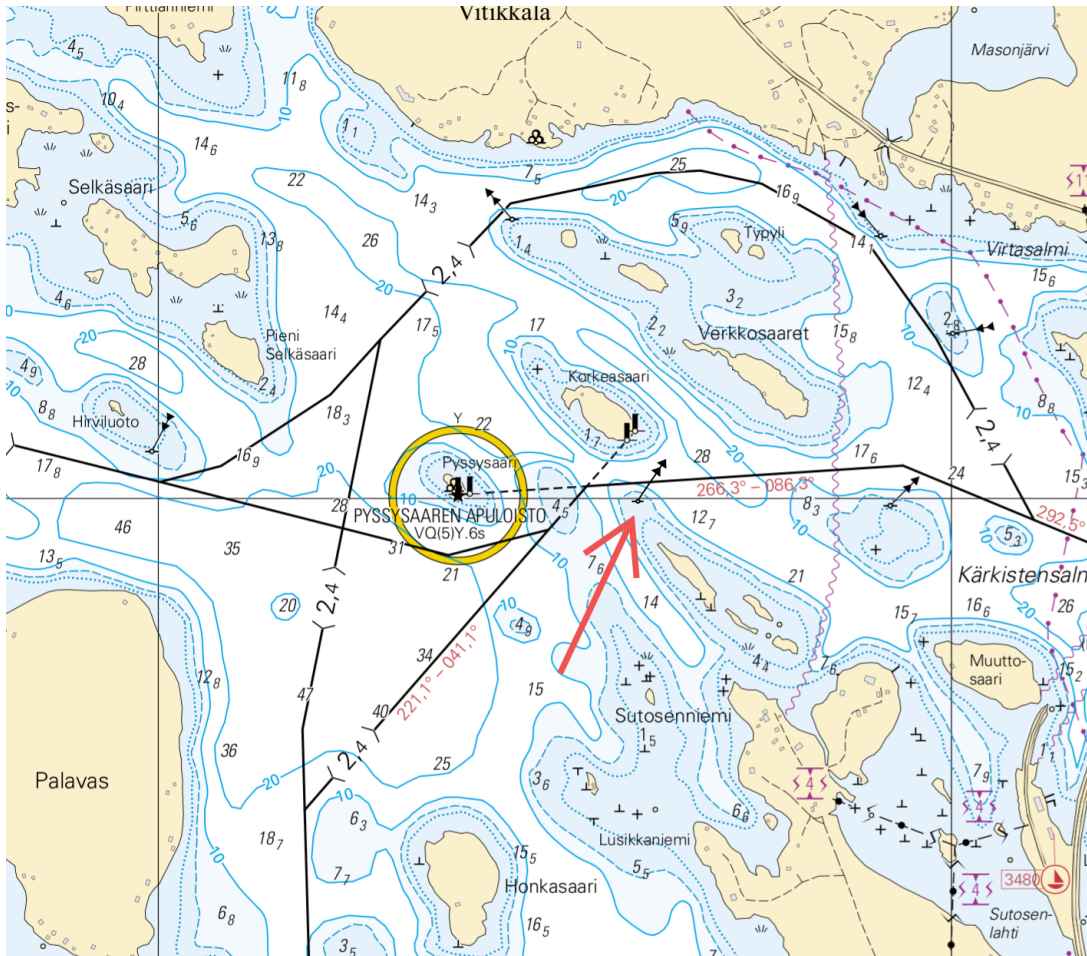


Image for reference, chart extracts not to scale of chart.

(Traficom, Helsinki/Helsingfors 2025)

Kokemäkijoki watercourse

*182/2025

2025-07-31





Finland. Kokemäkijoki watercourse. Hämeenlinna. Vähä-Roine.
Lampaansalmi. Buoyage. Fairways

Charts

P537

Previous

245/2021 [↗](#)

1	P537				
Add	$\langle 0,8 \rangle$	Between the following positions:	(1) 61°14.357'N 24°37.122'E		
		Delete former centre line	(2) 61°14.429'N 24°37.066'E		
			(3) 61°14.550'N 24°36.946'E		
			(4) 61°14.608'N 24°36.915'E		
2	P537				
Add			61°14.556'N 24°36.950'E		89025
3	P537				
Move			From		
			61°14.429'N 24°37.066'E		
			To		
			61°14.428'N 24°37.080'E		26476
4	P537				
Move			From		
			61°14.526'N 24°36.987'E		
			To		
			61°14.485'N 24°36.995'E		26478
5	P537				
Move			From		
			61°14.423'N 24°37.052'E		
			To		
			61°14.424'N 24°37.059'E		26477

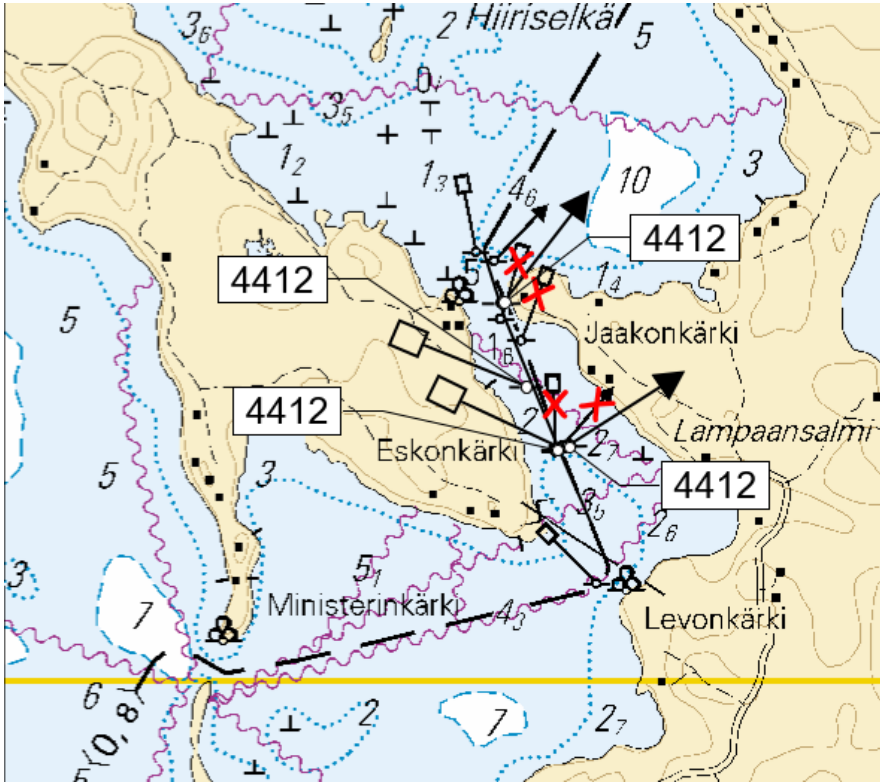


Image for reference, chart extracts not to scale of chart.

(Traficom, Helsinki/Helsingfors 2025)

Current Preliminary (P) and Temporary (T) notices (31.07.2025)

Gulf of Finland

T&P	Charts	Gulf of Finland
174(T)/2019 🔗	951	SE of Bol'soj Tjuters. Obstructions
296(T)/2020 🔗	17, 18, 191, 952, A, B	Helsinki. Sipoo. Areas and borders
20(T)/2021 🔗	951, A	TSS OFF ROOSHER ISLAND. Lighthouse Rodser extinguished. Notice repeated. Buoyage
228(T)/2021 🔗	951, A	Krestovj. Lighthouse Krestovj extinguished. Notice repeated. Buoyage
65(T)/2022 🔗	A, S	Vyborg. Destroyed leading beacon. Notice repeated. Buoyage
66(T)/2022 🔗	A, S	Vyborg. Light extinguished. Notice repeated. Buoyage
86(T)/2022 🔗	18, 191, 952, A, B	Helsinki. Kruunuvuori. Restrictions on small craft traffic. Fairways
90(T)/2022 🔗	951	Tiskolovo. Lighthouse Kajbolovo. Buoyage
230(T)/2023 🔗	18, 191, A, B	Helsinki. Hernesaari. Buoyage. Areas and borders
194(T)/2024 🔗	18, 191, A, B	Helsinki. Sompasaari. Buoyage
78(T)/2025 🔗	15, 16	Loviisa. SE of Lighthouse Tiiskeri. ODAS spar buoy. Buoyage
103(T)/2025 🔗	951, 952	E of lighthouse Kallbådagrund. Maintenance work. Areas and borders
129(T)/2025 🔗	952, A, B	Off Tallinn. Lighthouse Vahemadal extinguished. Buoyage
130(T)/2025 🔗	18, 191, A, B	Helsinki. Hernesaari. Notice repeated. Buoyage
143(T)/2025 🔗	18, 191, A, B	Helsinki. S of Vallisaari. Temporarily withdrawn ramark. Buoyage
176(T)/2025 🔗	18, 191, A, B	Helsinki. West Harbour...Restrictions on traffic. Areas and borders

Archipelago Sea

T&P	Charts	Archipelago Sea
189(T)/2023 🔗	26, D	Pargas. Kirjala...Restrictions on traffic. Areas and borders
40(T)/2024 🔗	26, 190, D	Naantali. Raumakari. Särkäsalmi. Kirkonsalmi. Notice repeated. Buoyage
130(T)/2024 🔗	27, D	Pargas. S of Utö. ODAS buoy. Buoyage
168(T)/2024 🔗	25, 26, 37, D	Pargas. Seili. ODAS buoy. Buoyage
239(T)/2024 🔗	27, 167, D	S of Utö. Söderdjupet. Measuring equipment on seabed. Areas and borders
267(T)/2024 🔗	26, 190, D	Port of Turku. Construction works. Areas and borders
162(T)/2025 🔗	24, 25, D	Pargas. S of Nagu. Temporarily withdrawn edge marks. Buoyage
163(T)/2025 🔗	24, 25, D	Pargas. Nötö. Temporarily withdrawn leading beacons. Buoyage

Aland Sea

T&P	Charts	Aland Sea
97(T)/2025 ↗	32, 160, C	Mariehamn. Lemströms canal...Notice repeated. Areas and borders

Bothnian Sea

T&P	Charts	Bothnian Sea
6(T)/2025 ↗	42, 125	Pori. Tahkoluoto. Notice repeated. Buoyage
157(T)/2025 ↗	953, 955, 8031	NE of Grundkallen. Diving works. Areas and borders
165(T)/2025 ↗	955	E of Söderhamn. Light Hällgrund extinguished. Buoyage

The Quark

T&P	Charts	The Quark
238(T)/2022 ↗	48, 115, 921, F, M	Vaasa. Vaskiluoto. Notice repeated. Buoyage
247(T)/2024 ↗	48, 820, 956, 957	Vaasa. Johansson. Buoyage
262(T)/2024 ↗	48, 115, 820	Vaasa. Vaskiluoto. (N2000) (BSCD2000). Buoyage. Fairway areas
279(T)/2024 ↗	48, 115, 820, 957, 8061, 8065	Vaasa. Vaskiluoto. Buoyage. Fairway areas
79(T)/2025 ↗	48, 115, 820, 956, 957	Vaasa. Dredging operations. Areas and borders
112(T)/2025 ↗	48, 115, 820, 956, 957	Port of Vasa. Channel to Vasa. Areas and borders

Bay of Bothnia

T&P	Charts	Bay of Bothnia
145(T)/2024 ↗	57, 846, 958, 8071	Hailuoto. Bridge construction work. Areas and borders
164(T)/2024 ↗	57, 119, 846	Oulu. Pikisaari. Fairways
3(T)/2025 ↗	57, 60, 848, 958	Off Oulu. SW of Lighthouse Oulu 1. Lost buoy. Virtual AIS. Buoyage
83(T)/2025 ↗	57, 846	Hailuoto. Boating passages at the Riutunkari and Huikku bridges.
104(T)/2025 ↗	55, 119, 838, 839	Port of Raahе. Dredging operations. Areas and borders
117(T)/2025 ↗	59, 854	Off Tornio. Maintenance of aids to navigation. Buoyage
179(T)/2025 ↗	52, 833, 834, 957, 8061	Kokkola. Lighthouse Kokkolan Majakka extinguished. Buoyage

Vuoksi watercourse

T&P	Charts	Vuoksi watercourse
64(T)/2025 ↗	L	Lappeenranta. Muukonsaari. Buoyage
72(T)/2025 ↗	M	Varkaus. Kortesaaret. Buoyage

Kymijoki watercourse

T&P	Charts	Kymijoki watercourse
-	-	

Kokemäkijoki watercourse

T&P	Charts	Kokemäkijoki watercourse
-	-	

Oulujoki watercourse

T&P	Charts	Oulujoki watercourse
-	-	

Paatsjoki watercourse

T&P	Charts	Paatsjoki watercourse
-	-	

Saimaa Canal

T&P	Charts	Saimaa Canal
-	-	

Northern Baltic

T&P	Charts	Northern Baltic
11(T)/2024 ↗	952, 953, 954	Hiiumaa. Tahkuna. Light Lehtma extinguished. Buoyage

Announcements

T&P	Charts	Announcements
137(T)/2023 ↗		Helsinki. Korkeasaari...Restrictions on small craft traffic
102(T)/2024 ↗		Pargas. Hessund. Bridge construction work.
86(T)/2025 ↗		Helsinki. Hevossalmi.