



Notices to Mariners

NtM 23/2025

Notices: 188 - 195 / 20.08.2025



Table of Contents

Title	Page
Index by Area	2
Index by Chart	3
Gulf of Finland	4
Archipelago Sea	6
Aland Sea	7
Kymijoki watercourse	9
Current Preliminary (P) and Temporary (T) notices (20.08.2025)	11

Index by Area

Gulf of Finland

Charts

*188/2025	18, 191, A, B
189(T)/2025	952, A, B
190(T)/2025	952, A, B

Archipelago Sea

Charts

*193/2025	D
-----------	---

Aland Sea

Charts

*191(T)/2025	32, 162, 753
*192(T)/2025	32, 162, 753

Kymijoki watercourse

Charts

*194/2025	K
*195/2025	481

Index by Chart

Charts	Notices
18	*188/2025
32	*191(T)/2025, *192(T)/2025
162	*191(T)/2025, *192(T)/2025
191	*188/2025
481	*195/2025
753	*191(T)/2025, *192(T)/2025
952	189(T)/2025, 190(T)/2025
A	*188/2025, 189(T)/2025, 190(T)/2025
B	*188/2025, 189(T)/2025, 190(T)/2025
D	*193/2025
K	*194/2025

Gulf of Finland


*188/2025

2025-08-20

Finland. Gulf of Finland. Helsinki. S of Vallisaari. Ramark Kuggensten operational. Buoyage

Charts		Previous
18	(INT 1250)	176/2025 ↗
191	(INT 1159)	176/2025 ↗
A626		186/2025 ↗
B626		186/2025 ↗

Cancelled: 143(T)/2025 [↗](#)

1	18, 191, A626, B626			
Add		60°07.295'N	25°00.541'E	11579, (C5201)
	KUGGENSTEN			

(Traficom, Helsinki/Helsingfors 2025)


189(T)/2025

2025-08-20

Estonia. Gulf of Finland. Paldiski. Light Pakri extinguished. Buoyage

Charts		Previous
952		186/2025 ↗
A/Helsinki - Tallinna		188/2025 ↗
B/Hanko - Haapsalu, B/Helsinki - Tallinn		188/2025 ↗

Time: Until futher notice


1	The light of the lighthouse is inoperative during the repair work.			
2	952, A/Helsinki - Tallinna, B/Hanko - Haapsalu, B/Helsinki - Tallinn			
Amend	 PAKRI LFI.W.15s (exting)	59°23.25'N	24°02.26'E	(C3774)

(NtM 08/122(T), Tallinn 2025)

Charts	Previous
952	189/2025 ↗
A/Helsinki - Tallinna	189/2025 ↗
B/Helsinki - Tallinn	189/2025 ↗

Time: until about 31 October 2025

1
Unmanned surface vehicle tests are taking place in the area. Other vessels should avoid entering the area if possible.

2	952, A/Helsinki - Tallinna, B/Helsinki - Tallinn	(1)	59°38.11'N	25°18.72'E
Add 	Between the following positions:	(2)	59°40.05'N	25°18.64'E
		(3)	59°40.00'N	25°29.06'E
		(4)	59°34.66'N	25°28.11'E

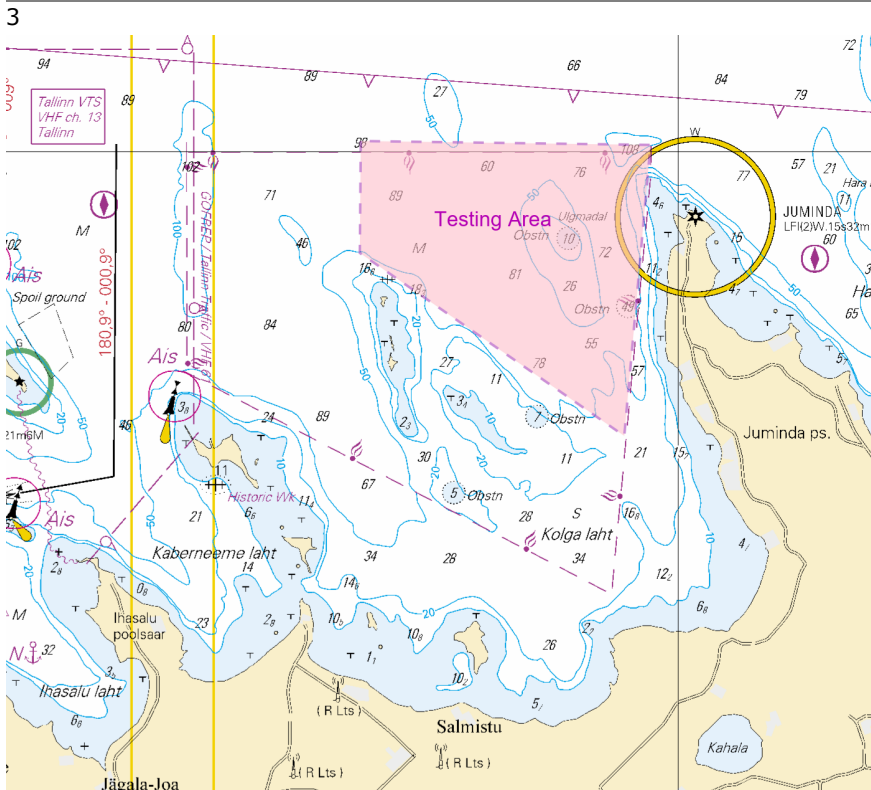


Image for reference, chart extracts not to scale of chart.

(NtM 08/123(T), Tallinn 2025)

Archipelago Sea

*193/2025

2025-08-20

Finland. Archipelago Sea. Turku. Samppansuntti. Buoyage

Charts

D706

Previous

170/2025 [↗](#)

References:95/2025 [↗](#)

1

D706

Add



60°22.960'N

22°08.266'E

89279

2

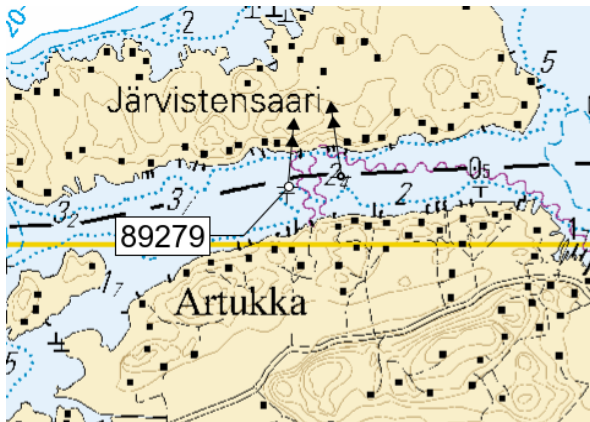


Image for reference, chart extracts not to scale of chart.

(Traficom, Helsinki/Helsingfors 2025)

Aland Sea

*191(T)/2025

2025-08-20

Finland. Aland Sea. Föglö. Brändön. Buoyage

Charts		Previous
32	(INT 1195)	154/2025 ↗
162	(INT 1157)	154/2025 ↗
753		154/2025 ↗

Time: Until further notice

1
Light inoperative during repair works. Avoid creating wash in the vicinity.

2 32, 162, 753

Amend  BRÄNDÖKOB BEN
Fl.3s (exting) 60°01.474'N 20°18.703'E 6248, (C4567)

(Traficom, Helsinki/Helsingfors 2025)

*192(T)/2025

2025-08-20

Finland. Aland Sea. Föglö. Finngrund. Buoyage

Charts		Previous
32	(INT 1195)	191/2025 ↗
162	(INT 1157)	191/2025 ↗
753		191/2025 ↗

Time: to approx. 30 September 2025

1
Lights inoperative during repair works. Avoid creating wash in the vicinity.

2 32, 162, 753

Amend  Front
FINNGRUND
Q (exting) 60°03.433'N 20°18.371'E 6258, (C4574)

3 32, 162, 753

Amend  Rear
FINNGRUND
LFl.6s (exting) 60°03.263'N 20°18.287'E 6259, (C4574.1)

Kymijoki watercourse

*194/2025

2025-08-20

Finland. Kymijoki watercourse. Viitasaari. Jurvansalo. Cables and pipelines

Charts

K336

Previous

115/2025 [↗](#)

1

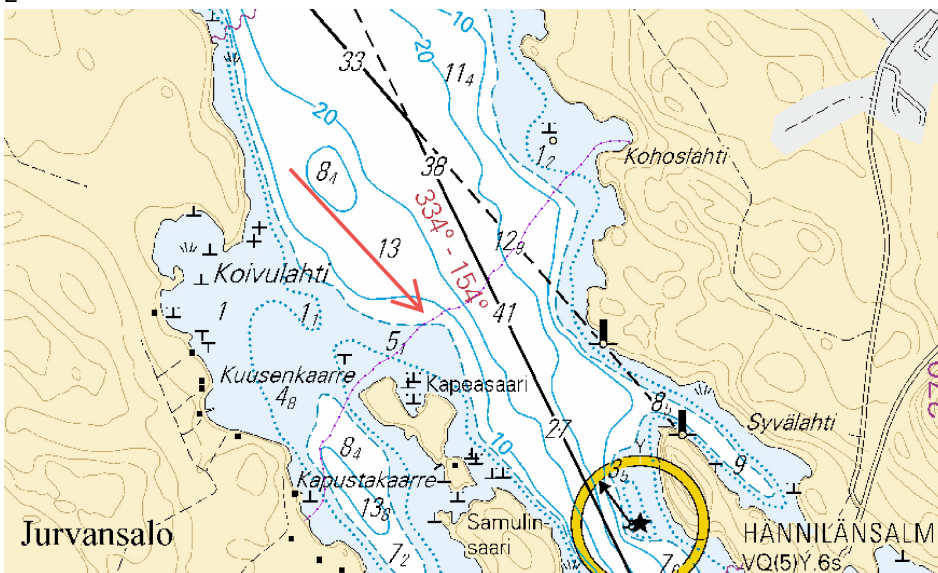
K336

Add 

Between the following positions:

- | | | |
|------|-------------|-------------|
| (1) | 63°02.916'N | 25°47.471'E |
| (2) | 63°02.937'N | 25°47.519'E |
| (3) | 63°02.974'N | 25°47.540'E |
| (4) | 63°03.007'N | 25°47.536'E |
| (5) | 63°03.043'N | 25°47.519'E |
| (6) | 63°03.064'N | 25°47.569'E |
| (7) | 63°03.094'N | 25°47.592'E |
| (8) | 63°03.139'N | 25°47.652'E |
| (9) | 63°03.238'N | 25°47.888'E |
| (10) | 63°03.265'N | 25°47.992'E |
| (11) | 63°03.282'N | 25°48.075'E |
| (12) | 63°03.340'N | 25°48.181'E |
| (13) | 63°03.375'N | 25°48.258'E |
| (14) | 63°03.395'N | 25°48.274'E |
| (15) | 63°03.416'N | 25°48.299'E |
| (16) | 63°03.482'N | 25°48.410'E |
| (17) | 63°03.493'N | 25°48.442'E |
| (18) | 63°03.543'N | 25°48.542'E |
| (19) | 63°03.556'N | 25°48.613'E |
| (20) | 63°03.555'N | 25°48.673'E |
| (21) | 63°03.547'N | 25°48.698'E |

2



*195/2025

2025-08-20

Finland. Kymijoki watercourse. Hirvensalmi. Kirjala. Obstructions

Charts

481.2

Previous

/

1

481.2

Add



obstn

61°40.147'N

26°50.781'E

Current Preliminary (P) and Temporary (T) notices (20.08.2025)

Gulf of Finland

T&P	Charts	Gulf of Finland
174(T)/2019 ↗	951	SE of Bol'soj Tjuters. Obstructions
296(T)/2020 ↗	17, 18, 191, 952, A, B	Helsinki. Sipoo. Areas and borders
20(T)/2021 ↗	951, A	TSS OFF ROOSHER ISLAND. Lighthouse Rodser extinguished. Notice repeated. Buoyage
228(T)/2021 ↗	951, A	Krestovjy. Lighthouse Krestovjy extinguished. Notice repeated. Buoyage
65(T)/2022 ↗	A, S	Vyborg. Destroyed leading beacon. Notice repeated. Buoyage
66(T)/2022 ↗	A, S	Vyborg. Light extinguished. Notice repeated. Buoyage
86(T)/2022 ↗	18, 191, 952, A, B	Helsinki. Kruunuvuori. Restrictions on small craft traffic. Fairways
90(T)/2022 ↗	951	Tiskolovo. Lighthouse Kajbolovo. Buoyage
230(T)/2023 ↗	18, 191, A, B	Helsinki. Hernesaari. Buoyage. Areas and borders
194(T)/2024 ↗	18, 191, A, B	Helsinki. Sompasaari. Buoyage
78(T)/2025 ↗	15, 16	Loviisa. SE of Lighthouse Tiiskeri. ODAS spar buoy. Buoyage
103(T)/2025 ↗	951, 952	E of lighthouse Kallbådagrund. Maintenance work. Areas and borders
129(T)/2025 ↗	952, A, B	Off Tallinn. Lighthouse Vahemadal extinguished. Buoyage
130(T)/2025 ↗	18, 191, A, B	Helsinki. Hernesaari. Notice repeated. Buoyage
176(T)/2025 ↗	18, 191, A, B	Helsinki. West Harbour...Restrictions on traffic. Areas and borders
189(T)/2025 ↗	952, A, B	Paldiski. Light Pakri extinguished. Buoyage
190(T)/2025 ↗	952, A, B	Jumida. Testing area. Areas and borders

Archipelago Sea

T&P	Charts	Archipelago Sea
189(T)/2023 ↗	26, D	Pargas. Kirjala...Restrictions on traffic. Areas and borders
40(T)/2024 ↗	26, 190, D	Naantali. Raumakari. Särkänsalmi. Kirkonsalmi. Notice repeated. Buoyage
130(T)/2024 ↗	27, D	Pargas. S of Utö. ODAS buoy. Buoyage
168(T)/2024 ↗	25, 26, 37, D	Pargas. Seili. ODAS buoy. Buoyage
239(T)/2024 ↗	27, 167, D	S of Utö. Söderdjupet. Measuring equipment on seabed. Areas and borders
267(T)/2024 ↗	26, 190, D	Port of Turku. Construction works. Areas and borders
162(T)/2025 ↗	24, 25, D	Pargas. S of Nagu. Temporarily withdrawn edge marks. Buoyage
163(T)/2025 ↗	24, 25, D	Pargas. Nötö. Temporarily withdrawn leading beacons. Buoyage

Aland Sea

T&P	Charts	Aland Sea
97(T)/2025 ↗	32, 160, C	Mariehamn. Lemströms canal...Notice repeated. Areas and borders
191(T)/2025 ↗	32, 162, 753	Föglö. Brändön. Buoyage
192(T)/2025 ↗	32, 162, 753	Föglö. Finngrund. Buoyage

Bothnian Sea

T&P	Charts	Bothnian Sea
6(T)/2025 ↗	42, 125	Pori. Tahkoluoto. Notice repeated. Buoyage
157(T)/2025 ↗	953, 955, 8031	NE of Grundkallen. Diving works. Areas and borders
165(T)/2025 ↗	955	E of Söderhamn. Light Hällgrund extinguished. Buoyage
187(T)/2025 ↗	41, 42, 805, 807, 808, 955	Off Pori and Rauma. SVEN firing exercises. Areas and borders

The Quark

T&P	Charts	The Quark
238(T)/2022 ↗	48, 115, 921, F, M	Vaasa. Vaskiluoto. Notice repeated. Buoyage
247(T)/2024 ↗	48, 820, 956, 957	Vaasa. Johansson. Buoyage
262(T)/2024 ↗	48, 115, 820	Vaasa. Vaskiluoto. (N2000) (BSCD2000). Buoyage. Fairway areas
279(T)/2024 ↗	48, 115, 820, 957, 8061, 8065	Vaasa. Vaskiluoto. Buoyage. Fairway areas
79(T)/2025 ↗	48, 115, 820, 956, 957	Vaasa. Dredging operations. Areas and borders
112(T)/2025 ↗	48, 115, 820, 956, 957	Port of Vasa. Channel to Vasa. Areas and borders

Bay of Bothnia

T&P	Charts	Bay of Bothnia
145(T)/2024 ↗	57, 846, 958, 8071	Hailuoto. Bridge construction work. Areas and borders
164(T)/2024 ↗	57, 119, 846	Oulu. Pikisaari. Fairways
3(T)/2025 ↗	57, 60, 848, 958	Off Oulu. SW of Lighthouse Oulu 1. Lost buoy. Virtual AIS. Buoyage
83(T)/2025 ↗	57, 846	Hailuoto. Boating passages at the Riutunkari and Huikku bridges.
104(T)/2025 ↗	55, 119, 838, 839	Port of Raahe. Dredging operations. Areas and borders
117(T)/2025 ↗	59, 854	Off Tornio. Maintenance of aids to navigation. Buoyage
179(T)/2025 ↗	52, 833, 834, 957, 8061	Kokkola. Lighthouse Kokkolan Majakka extinguished. Buoyage

Vuoksi watercourse

T&P	Charts	Vuoksi watercourse
64(T)/2025 ↗	L	Lappeenranta. Muukonsaari. Buoyage
72(T)/2025 ↗	M	Varkaus. Kortesaaret. Buoyage

Kymijoki watercourse

T&P	Charts	Kymijoki watercourse
-	-	

Kokemäijoki watercourse

T&P	Charts	Kokemäijoki watercourse
-	-	

Oulujoki watercourse

T&P	Charts	Oulujoki watercourse
-	-	

Paatsjoki watercourse

T&P	Charts	Paatsjoki watercourse
-	-	

Saimaa Canal

T&P	Charts	Saimaa Canal
-	-	

Northern Baltic

T&P	Charts	Northern Baltic
11(T)/2024 ↗	952, 953, 954	Hiiumaa. Tahkuna. Light Lehtma extinguished. Buoyage

Announcements

T&P	Charts	Announcements
137(T)/2023 ↗		Helsinki. Korkeasaari...Restrictions on small craft traffic
102(T)/2024 ↗		Pargas. Hessund. Bridge construction work.
86(T)/2025 ↗		Helsinki. Hevossalmi.