



Notices to Mariners

NtM 26/2025

Notices: 207 - 210 / 20.09.2025



Table of Contents

Title	Page
Index by Area	2
Index by Chart	3
Archipelago Sea	4
The Quark	5
Announcements	6
Current Preliminary (P) and Temporary (T) notices (19.09.2025)	9

Index by Area

Archipelago Sea

Charts

*207/2025

24, 25, D

The Quark

Charts

*208/2025

48, 115, 820, 956, 957

Announcements

Charts

*209/2025

*210/2025

Index by Chart

Charts	Notices
24	*207/2025
25	*207/2025
48	*208/2025
115	*208/2025
820	*208/2025
956	*208/2025
957	*208/2025
D	*207/2025

Archipelago Sea

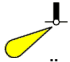
*207/2025

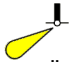
2025-09-19

Finland. Archipelago Sea. Pargas. Nötö. Leading beacons in operation.
Buoyage

Charts		Previous
24	(INT 1187)	163/2025 ↗
25	(INT 1188)	163/2025 ↗
D711, D716, D716.2		204/2025 ↗

Cancelled: 163(T)/2025 [↗](#)

1		24, 25, D711, D716, D716.2			
Add		Front			
	NÖTÖ Fl.Y.2s		59°57.227'N	21°42.995'E	3207

2		24, 25, D711, D716, D716.2			
Add		Rear			
	NÖTÖ LFl.Y.8s		59°57.870'N	21°44.769'E	3208

(Traficom, Helsinki/Helsingfors 2025)

The Quark

*208/2025

2025-09-19

Finland. The Quark. Vaasa. Dredging operations completed. Areas and borders

Charts		Previous
48	(INT 1139)	178/2025 ↗
115.B, 115.C	(INT 11391)	178/2025 ↗
820, 820.B		178/2025 ↗
956		112/2025 ↗
957	(INT 1208)	179/2025 ↗

References: 112(T)/2025 [↗](#)

Cancelled: 79(T)/2025 [↗](#)

1	48, 115.B, 115.C, 820, 820.B, 956, 957			
Delete	Between the following positions:	(1)	63°07.2'N	21°20.9'E
		(2)	63°04.8'N	21°34.4'E

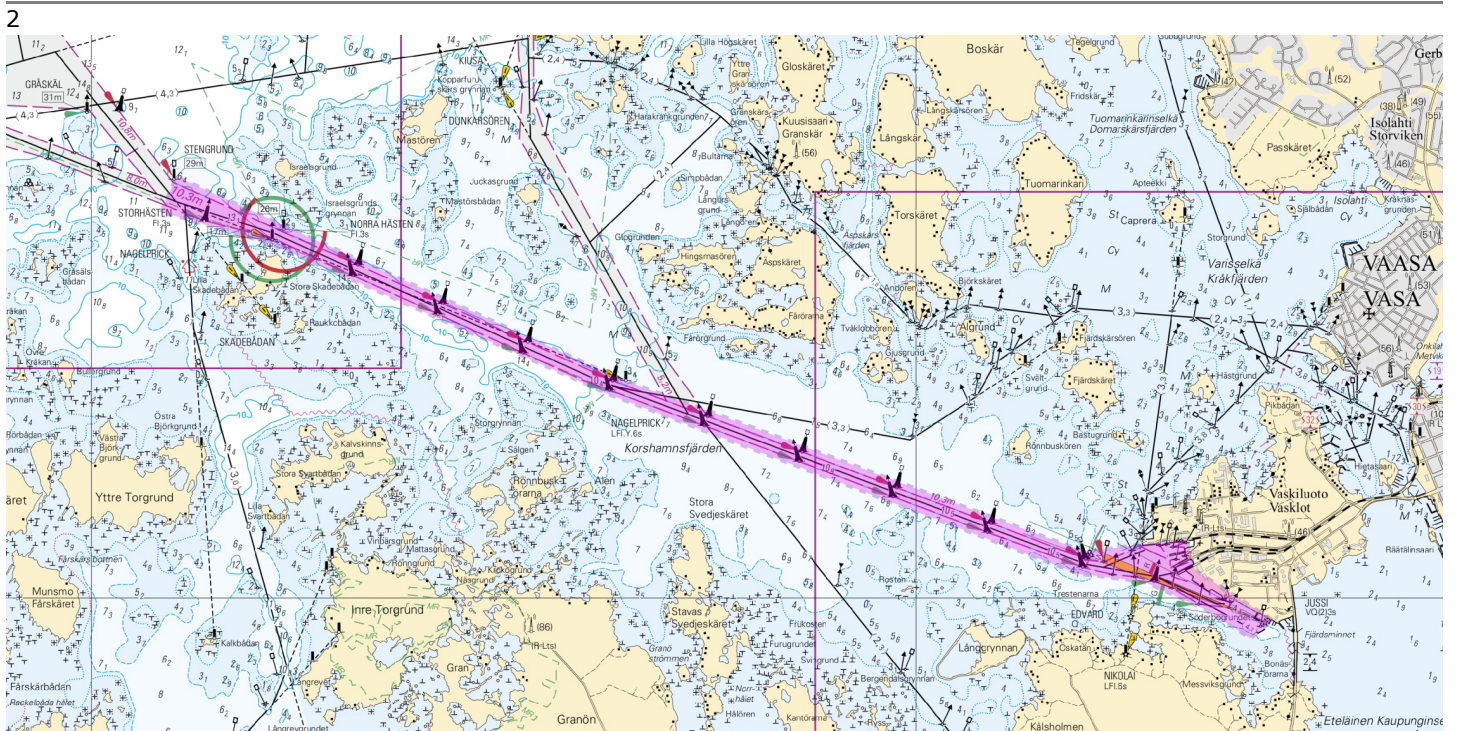


Image for reference, chart extracts not to scale of chart.

(Traficom, Helsinki/Helsingfors 2025)

Announcements

*209/2025

2025-09-19

Finland. New chart editions. (N2000) (BSCD2000).

[Charts](#)

[Previous](#)

References:151/2025 [↗](#)

1

Nimi	Oikaisupäivämäärä	Myyntipäivämäärä	Painos
Namn	Rättelsedatum	Utgivningsdatum	Upplaga
Name	Correction date	Release date	Edition
Merikarttasarja L (Lappeenranta – Savonlinna, Villmanstrand – Nyslott)	20.8.2025	15.9.2025	2025
Sjökortsserie L (Lappeenranta – Savonlinna, Villmanstrand – Nyslott)	20.8.2025	15.9.2025	2025
Chart folio L (Lappeenranta – Savonlinna, Villmanstrand – Nyslott)	20.8.2025	15.9.2025	2025

Image for reference, chart extracts not to scale of chart.

(Traficom, Helsinki/Helsingfors 2025)

*210/2025

2025-09-19

Finland. New depth reference level N2000 (BSCD2000) for charts.

[Charts](#)

[Previous](#)

References:152/2025 [↗](#)

1

New depth reference level N2000 (BSCD2000) for charts

Finnish nautical charts and fairways are currently in the process of switching over to a new harmonised reference level for depth information that is tied to the national N2000 height system. The current reference level for depth information in sea areas is based on mean water level, and it will be replaced with a reference level that is tied to the N2000 vertical coordinate reference system.

The N2000 fairway and nautical chart reform is part of the Baltic Sea countries' joint project BSCD2000 (Baltic Sea Chart Datum 2000). The purpose of the project is to harmonise the interpretation of nautical chart data and available water depth in the Baltic Sea region. The migration to the new depth information reference level will affect the depth and fairway information presented on nautical charts. The changes to the information are caused by the difference between current reference level (MSL) and the zero position used in the N2000 system. Picture 3.

Integrated reference level

N2000 chart products present depth and fairway information using the N2000 height system that is tied to the Earth's crust instead of the mean sea level MSL (Mean Sea Level) / MW (Mean Water) in sea areas. When using the theoretical mean sea level, the zero level is equal to the average water level in the year in question, which means that the zero level has changed some millimetres each year. N2000 chart products present depth and fairway information using the N2000 height system that is tied to the Earth's crust without being influenced by the effects of the land uplift or sea level changes. Because the zero level in the N2000 system is below the current mean sea level (MSL), the depths on charts will, depending on the area, decrease by approximately 10–20 cm due to the reference level, and the prevailing water level will increase correspondingly. The available water depth does not change when sea level data in the N2000 format is taken into account. Picture 4.

The importance of water level in relation to the depth available will be accentuated. The Finnish Meteorological Institute has since September 2021 published its sea level observations and forecasts in the N2000 format as well as in relation to the theoretical mean sea level. The data is available on the Institute's website (<https://en.ilmatieteenlaitos.fi/sea-level>).

During the transition period, charts in accordance with both the old and the new system will be used. Therefore, it is important to check the reference level of the chart used and the corresponding water level reading. The list of nautical chart products always provides up-to-date information on the valid edition of the charts and the reference level used therein.

List of nautical chart products: <https://www.traficom.fi/fi/merikartoituksen-tuoteluettelo>

More information about the N2000 fairway and nautical chart reform: <https://www.traficom.fi/en/transport/maritime/n2000-fairway-and-nautical-chart-reform-improved>.

2

New channel depth instructions:

<https://www.traficom.fi/en/news/new-channel-depth-instructions-enter-force-15-november-2021>

Sailing Directions for Finnish waters:

<https://www.traficom.fi/en/services/sailing-directions-finnish-waters>

Presentation of fairway information on Finnish S-57 ENCs

<https://www.traficom.fi/fi/ajankohtaista/vaylatietojen-esitystapa-muuttuu-suomalaisilla-s-57-enc-kartoilla>.

Fairway usage in commercial shipping: <https://www.traficom.fi/en/transport/maritime/use-fairways-merchant-shipping>

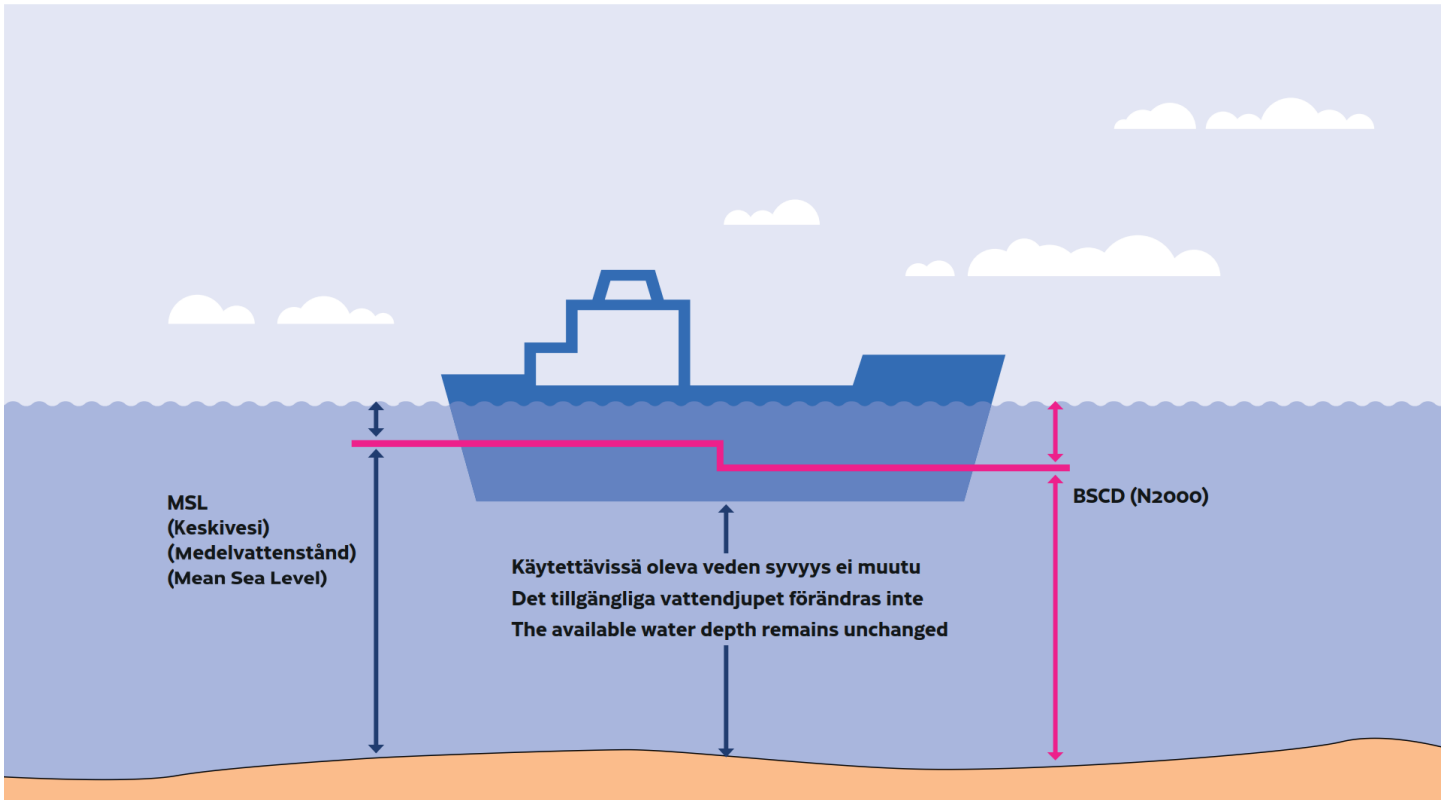


Image for reference, chart extracts not to scale of chart.

Esimerkkikuva vertaustason vaikutuksista / Bild som exemplifierar referensnivåns inverkan / Figure illustrating the effect of the reference level

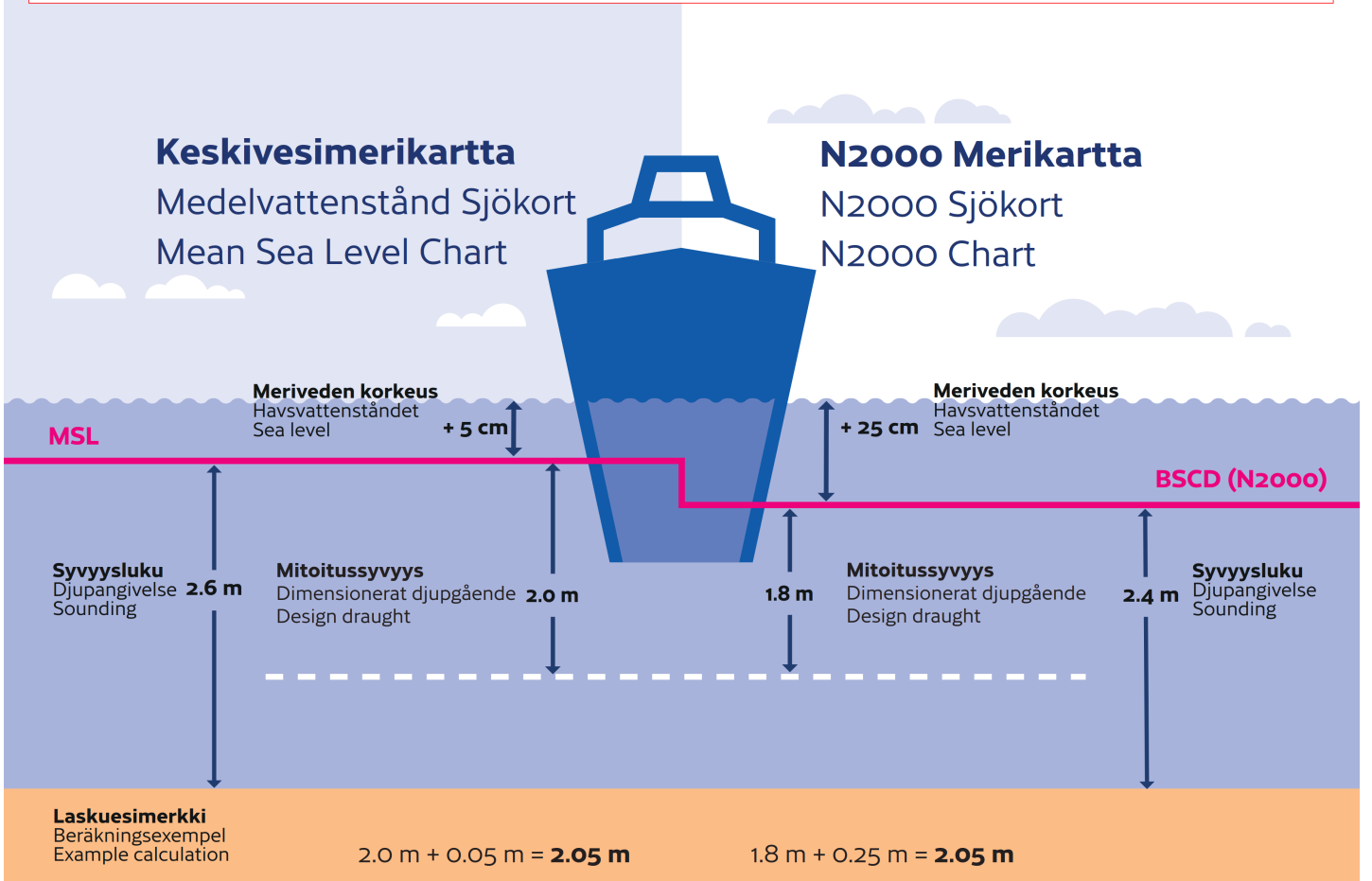


Image for reference, chart extracts not to scale of chart.

Current Preliminary (P) and Temporary (T) notices (19.09.2025)

Gulf of Finland

T&P	Charts	Gulf of Finland
174(T)/2019 🔗	951	SE of Bol'soj Tjuters. Obstructions
296(T)/2020 🔗	17, 18, 191, 952, A, B	Helsinki. Sipoo. Areas and borders
20(T)/2021 🔗	951, A	TSS OFF ROOSHER ISLAND. Lighthouse Rodser extinguished. Notice repeated. Buoyage
228(T)/2021 🔗	951, A	Krestovj. Lighthouse Krestovj extinguished. Notice repeated. Buoyage
65(T)/2022 🔗	A, S	Vyborg. Destroyed leading beacon. Notice repeated. Buoyage
66(T)/2022 🔗	A, S	Vyborg. Light extinguished. Notice repeated. Buoyage
86(T)/2022 🔗	18, 191, 952, A, B	Helsinki. Kruunuvuori. Restrictions on small craft traffic. Fairways
90(T)/2022 🔗	951	Tiskolovo. Lighthouse Kajbolovo. Buoyage
230(T)/2023 🔗	18, 191, A, B	Helsinki. Hernesaari. Buoyage. Areas and borders
194(T)/2024 🔗	18, 191, A, B	Helsinki. Sompasaari. Buoyage
78(T)/2025 🔗	15, 16	Loviisa. SE of Lighthouse Tiiskeri. ODAS spar buoy. Buoyage
129(T)/2025 🔗	952, A, B	Off Tallinn. Lighthouse Vahemadal extinguished. Buoyage
130(T)/2025 🔗	18, 191, A, B	Helsinki. Hernesaari. Notice repeated. Buoyage
176(T)/2025 🔗	18, 191, A, B	Helsinki. West Harbour...Restrictions on traffic. Areas and borders
189(T)/2025 🔗	952, A, B	Paldiski. Light Pakri extinguished. Buoyage
197(T)/2025 🔗	18, 191, A, B	Helsinki. Sompasaari. Nihti. Areas and borders

Archipelago Sea

T&P	Charts	Archipelago Sea
189(T)/2023 🔗	26, D	Pargas. Kirjala...Restrictions on traffic. Areas and borders
40(T)/2024 🔗	26, 190, D	Naantali. Raumakari. Särkäsalmi. Kirkonsalmi. Notice repeated. Buoyage
168(T)/2024 🔗	25, 26, 37, D	Pargas. Seili. ODAS buoy. Buoyage
239(T)/2024 🔗	27, 167, D	S of Utö. Söderdjupet. Measuring equipment on seabed. Areas and borders
267(T)/2024 🔗	26, 190, D	Port of Turku. Construction works. Areas and borders
162(T)/2025 🔗	24, 25, D	Pargas. S of Nagu. Temporarily withdrawn edge marks. Buoyage

Aland Sea

T&P	Charts	Aland Sea
97(T)/2025 ↗	32, 160, C	Mariehamn. Lemströms canal...Notice repeated. Areas and borders
191(T)/2025 ↗	32, 162, 753	Föglö. Brändön. Buoyage
192(T)/2025 ↗	32, 162, 753	Föglö. Finngrund. Buoyage

Bothnian Sea

T&P	Charts	Bothnian Sea
6(T)/2025 ↗	42, 125	Pori. Tahkoluoto. Notice repeated. Buoyage
165(T)/2025 ↗	955	E of Söderhamn. Light Hällgrund extinguished. Buoyage

The Quark

T&P	Charts	The Quark
238(T)/2022 ↗	48, 115, 921, F, M	Vaasa. Vaskiluoto. Notice repeated. Buoyage
247(T)/2024 ↗	48, 820, 956, 957	Vaasa. Johansson. Buoyage
262(T)/2024 ↗	48, 115, 820	Vaasa. Vaskiluoto. (N2000) (BSCD2000). Buoyage. Fairway areas
279(T)/2024 ↗	48, 115, 820, 957, 8061, 8065	Vaasa. Vaskiluoto. Buoyage. Fairway areas
112(T)/2025 ↗	48, 115, 820, 956, 957	Port of Vasa. Channel to Vasa. Areas and borders

Bay of Bothnia

T&P	Charts	Bay of Bothnia
145(T)/2024 ↗	57, 846, 958, 8071	Hailuoto. Bridge construction work. Areas and borders
164(T)/2024 ↗	57, 119, 846	Oulu. Pikisaari. Fairways
3(T)/2025 ↗	57, 60, 848, 958	Off Oulu. SW of Lighthouse Oulu 1. Lost buoy. Virtual AIS. Buoyage
83(T)/2025 ↗	57, 846	Hailuoto. Boating passages at the Riutunkari and Huikku bridges.
104(T)/2025 ↗	55, 119, 838, 839	Port of Raahе. Dredging operations. Areas and borders
117(T)/2025 ↗	59, 854	Off Tornio. Maintenance of aids to navigation. Buoyage
179(T)/2025 ↗	52, 833, 834, 957, 8061	Kokkola. Lighthouse Kokkolan Majakka extinguished. Buoyage
201(T)/2025 ↗	57, 846	Hailuoto. Boating passages at the Huikku bridge...Areas and borders

Vuoksi watercourse

T&P	Charts	Vuoksi watercourse
64(T)/2025 ↗	L	Lappeenranta. Muukonsaari. Buoyage
72(T)/2025 ↗	M	Varkaus. Kortesaaret. Buoyage

Kymijoki watercourse

T&P	Charts	Kymijoki watercourse
-	-	

Kokemäkijoki watercourse

T&P	Charts	Kokemäkijoki watercourse
-	-	

Oulujoki watercourse

T&P	Charts	Oulujoki watercourse
-	-	

Paatsjoki watercourse

T&P	Charts	Paatsjoki watercourse
-	-	

Saimaa Canal

T&P	Charts	Saimaa Canal
-	-	

Northern Baltic

T&P	Charts	Northern Baltic
11(T)/2024 ↗	952, 953, 954	Hiiumaa. Tahkuna. Light Lehtma extinguished. Buoyage

Announcements

T&P	Charts	Announcements
137(T)/2023 ↗		Helsinki. Korkeasaari...Restrictions on small craft traffic
102(T)/2024 ↗		Pargas. Hessund. Bridge construction work.
86(T)/2025 ↗		Helsinki. Hevossalmi.