



Notices to Mariners

NtM 27/2025

Notices: 211 - 215 / 30.09.2025



Table of Contents

Title	Page
Index by Area	2
Index by Chart	3
Gulf of Finland	4
Archipelago Sea	6
Aland Sea	8
Bothnian Sea	9
Current Preliminary (P) and Temporary (T) notices (30.09.2025)	10

Index by Area

Gulf of Finland

Charts

*211(T)/2025	15, 16, 101, 103, 951, A
--------------	--------------------------

Archipelago Sea

Charts

*212/2025	25, 26, 29, 37, 105, D
-----------	------------------------

*213/2025	27, 167, D
-----------	------------

Aland Sea

Charts

*214/2025	32, 160, 756, 757
-----------	-------------------

Bothnian Sea

Charts

*215/2025	43, 810, 811
-----------	--------------

Index by Chart

Charts	Notices
15	*211(T)/2025
16	*211(T)/2025
25	*212/2025
26	*212/2025
27	*213/2025
29	*212/2025
32	*214/2025
37	*212/2025
43	*215/2025
101	*211(T)/2025
103	*211(T)/2025
105	*212/2025
160	*214/2025
167	*213/2025
756	*214/2025
757	*214/2025
810	*215/2025
811	*215/2025
951	*211(T)/2025
A	*211(T)/2025
D	*212/2025, *213/2025

Gulf of Finland

*211(T)/2025

2025-09-30

Finland. Gulf of Finland. Loviisa. Valko. Geotechnical seabed surveys. Areas and borders

Charts		Previous
15	(INT 1247)	118/2025 ↗
16	(INT 1248)	105/2025 ↗
101.C	(INT 12461)	82/2024 ↗
103.A	(INT 12491)	283/2024 ↗
951		103/2025 ↗
A615, A615.1, A616		203/2025 ↗

Time: Until further notice

1

Geological surveys on Loviisa 9.5 meters fairway. Passing vessels are requested to lower velocity and avoid creating wash. Surveys conducted by vessels Aramis (MMSI 230151360) and Nalle.

2

15, 16, 101.C, 103.A, 951, A615, A615.1, A616

Add

Between the following positions:

- (1) 60°24.086'N 26°16.474'E
- (2) 60°24.179'N 26°17.359'E
- (3) 60°22.964'N 26°17.677'E
- (4) 60°19.637'N 26°20.631'E
- (5) 60°19.132'N 26°21.624'E
- (6) 60°18.716'N 26°20.495'E
- (7) 60°19.329'N 26°19.687'E
- (8) 60°22.609'N 26°16.867'E
- (9) 60°24.086'N 26°16.474'E

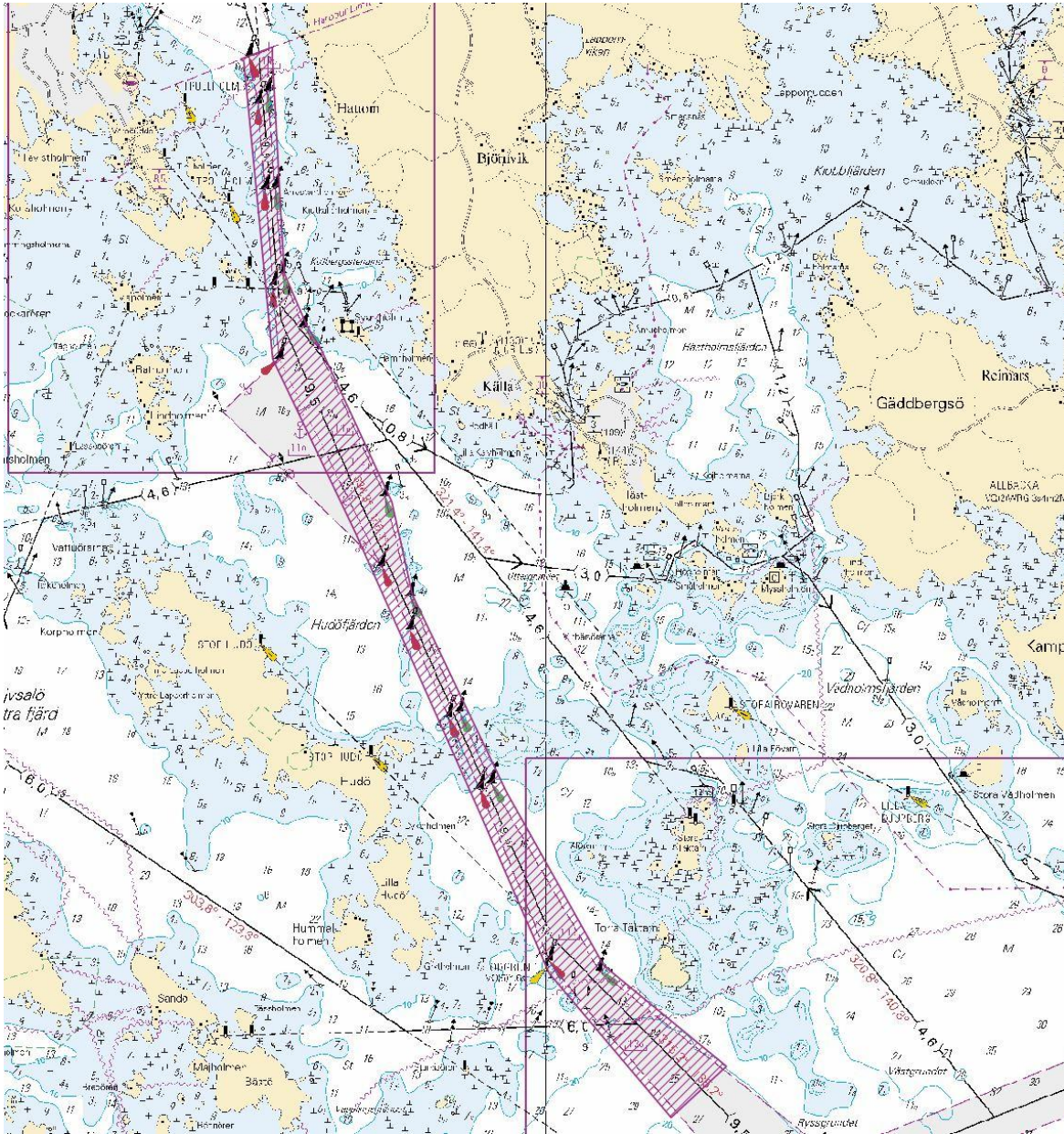


Image for reference, chart extracts not to scale of chart.

(Traficom, Helsinki/Helsingfors 2025)

Archipelago Sea


*212/2025

2025-09-30

Finland. Archipelago Sea. Pargas. Norrskata. Skjaldholms fjärden. Buoyage

Charts		Previous
25	(INT 1188)	207/2025 ↗
26	(INT 1189)	204/2025 ↗
29	(INT 1192)	204/2025 ↗
37	(INT 1198)	204/2025 ↗
105.A	(INT 11881)	73/2024 ↗
D718, D718.1, D727		207/2025 ↗


1 25, 26, 37, 105.A, D718

Delete 

KORVETIN MATAALA 15m

60°14.387'N 21°41.679'E 21700


2 25, 26, 29, 37, 105.A, D718, D718.1, D727

Delete 

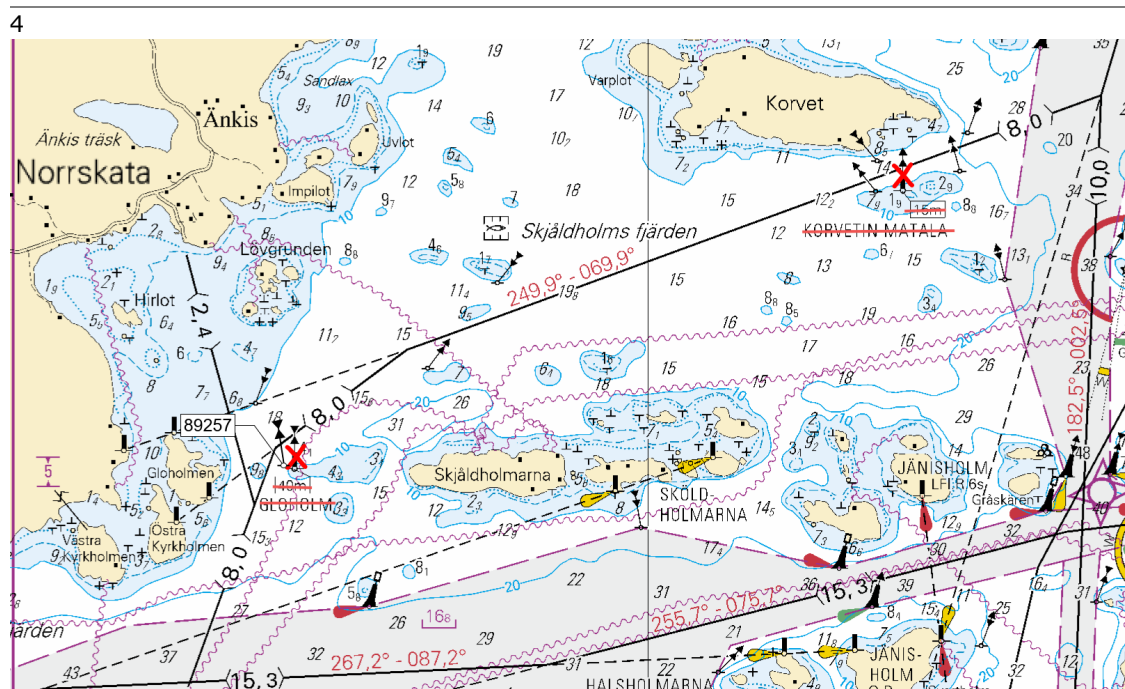
GLOHOLM 40m

60°13.474'N 21°37.659'E 21696

3 25, 26, 29, 37, 105.A, D718, D718.1, D727

Add 

60°13.479'N 21°37.594'E 89257




*213/2025

2025-09-30

Finland. Archipelago Sea. Jurmo. Egloskär. Buoyage

Charts		Previous
27	(INT 1190)	200/2025 ↗
167	(INT 11901)	134/2025 ↗
D714, D715		212/2025 ↗

1	27, 167, D714, D715			
Add		59°50.167'N	21°23.070'E	89305

Aland Sea

*214/2025

2025-09-30

Finland. Aland Sea. Mariehamn. Västerhamn. Obstructions. Cultural Features

Charts		Previous
32	(INT 1195)	192/2025 ↗
160	(INT 1156)	97/2025 ↗
756		/
757.A		/

1	32, 160, 756, 757.A								
Delete	—	Between the following positions:	<table border="1"> <tr> <td>(1)</td> <td>60°05.423'N</td> <td>19°55.738'E</td> </tr> <tr> <td>(2)</td> <td>60°05.390'N</td> <td>19°55.738'E</td> </tr> </table>	(1)	60°05.423'N	19°55.738'E	(2)	60°05.390'N	19°55.738'E
(1)	60°05.423'N	19°55.738'E							
(2)	60°05.390'N	19°55.738'E							

2	160, 757.A		
Delete	<input type="checkbox"/>		60°05.414'N 19°55.738'E

3	160, 757.A		
Delete	<input type="checkbox"/>		60°05.396'N 19°55.738'E

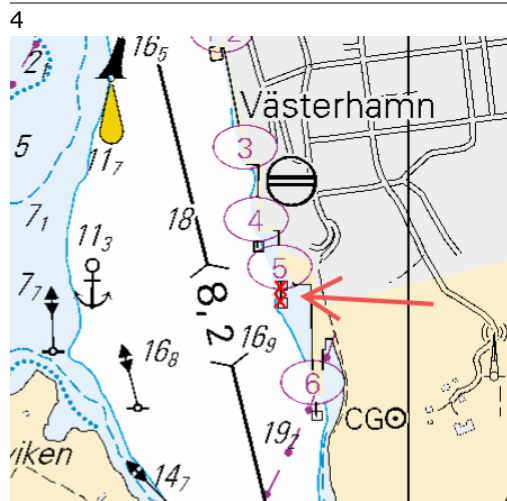


Image for reference, chart extracts not to scale of chart.

(Traficom, Helsinki/Helsingfors 2025)

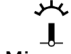
Bothnian Sea

*215/2025

2025-09-30

Finland. Bothnian Sea. Merikarvia. Pooskeri. Buoyage

Charts		Previous
43	(INT 1134)	252/2024 ↗
810		120/2025 ↗
811		252/2024 ↗

1	43, 810, 811			
Delete	 Mimmuli	61°48.104'N	21°18.469'E	29903

(Traficom, Helsinki/Helsingfors 2025)

Current Preliminary (P) and Temporary (T) notices (30.09.2025)

Gulf of Finland

T&P	Charts	Gulf of Finland
174(T)/2019 ↗	951	SE of Bol'soj Tjuters. Obstructions
296(T)/2020 ↗	17, 18, 191, 952, A, B	Helsinki. Sipoo. Areas and borders
20(T)/2021 ↗	951, A	TSS OFF ROOSHER ISLAND. Lighthouse Rodser extinguished. Notice repeated. Buoyage
228(T)/2021 ↗	951, A	Krestovyy. Lighthouse Krestovyy extinguished. Notice repeated. Buoyage
65(T)/2022 ↗	A, S	Vyborg. Destroyed leading beacon. Notice repeated. Buoyage
66(T)/2022 ↗	A, S	Vyborg. Light extinguished. Notice repeated. Buoyage
86(T)/2022 ↗	18, 191, 952, A, B	Helsinki. Kruunuvuori. Restrictions on small craft traffic. Fairways
90(T)/2022 ↗	951	Tiskolovo. Lighthouse Kajbolovo. Buoyage
230(T)/2023 ↗	18, 191, A, B	Helsinki. Hernesaari. Buoyage. Areas and borders
194(T)/2024 ↗	18, 191, A, B	Helsinki. Sompasaari. Buoyage
78(T)/2025 ↗	15, 16	Loviisa. SE of Lighthouse Tiiskeri. ODAS spar buoy. Buoyage
129(T)/2025 ↗	952, A, B	Off Tallinn. Lighthouse Vahemadal extinguished. Buoyage
130(T)/2025 ↗	18, 191, A, B	Helsinki. Hernesaari. Notice repeated. Buoyage
176(T)/2025 ↗	18, 191, A, B	Helsinki. West Harbour...Restrictions on traffic. Areas and borders
189(T)/2025 ↗	952, A, B	Paldiski. Light Pakri extinguished. Buoyage
197(T)/2025 ↗	18, 191, A, B	Helsinki. Sompasaari. Nihti. Areas and borders
211(T)/2025 ↗	15, 16, 101, 103, 951, A	Loviisa. Valko. Geotechnical seabed surveys. Areas and borders

Archipelago Sea

T&P	Charts	Archipelago Sea
189(T)/2023 ↗	26, D	Pargas. Kirjala...Restrictions on traffic. Areas and borders
40(T)/2024 ↗	26, 190, D	Naantali. Raumakari. Särkänalmi. Kirkonsalmi. Notice repeated. Buoyage
168(T)/2024 ↗	25, 26, 37, D	Pargas. Seili. ODAS buoy. Buoyage
239(T)/2024 ↗	27, 167, D	S of Utö. Söderdjupet. Measuring equipment on seabed. Areas and borders
267(T)/2024 ↗	26, 190, D	Port of Turku. Construction works. Areas and borders
162(T)/2025 ↗	24, 25, D	Pargas. S of Nagu. Temporarily withdrawn edge marks. Buoyage

Aland Sea

T&P	Charts	Aland Sea
97(T)/2025 ↗	32, 160, C	Mariehamn. Lemströms canal...Notice repeated. Areas and borders
191(T)/2025 ↗	32, 162, 753	Föglö. Brändön. Buoyage
192(T)/2025 ↗	32, 162, 753	Föglö. Finngrund. Buoyage

Bothnian Sea

T&P	Charts	Bothnian Sea
6(T)/2025 ↗	42, 125	Pori. Tahkoluoto. Notice repeated. Buoyage
165(T)/2025 ↗	955	E of Söderhamn. Light Hällgrund extinguished. Buoyage

The Quark

T&P	Charts	The Quark
238(T)/2022 ↗	48, 115, 921, F, M	Vaasa. Vaskiluoto. Notice repeated. Buoyage
247(T)/2024 ↗	48, 820, 956, 957	Vaasa. Johansson. Buoyage
262(T)/2024 ↗	48, 115, 820	Vaasa. Vaskiluoto. (N2000) (BSCD2000). Buoyage. Fairway areas
279(T)/2024 ↗	48, 115, 820, 957, 8061, 8065	Vaasa. Vaskiluoto. Buoyage. Fairway areas
112(T)/2025 ↗	48, 115, 820, 956, 957	Port of Vasa. Channel to Vasa. Areas and borders

Bay of Bothnia

T&P	Charts	Bay of Bothnia
145(T)/2024 ↗	57, 846, 958, 8071	Hailuoto. Bridge construction work. Areas and borders
164(T)/2024 ↗	57, 119, 846	Oulu. Pikisaari. Fairways
3(T)/2025 ↗	57, 60, 848, 958	Off Oulu. SW of Lighthouse Oulu 1. Lost buoy. Virtual AIS. Buoyage
83(T)/2025 ↗	57, 846	Hailuoto. Boating passages at the Riutunkari and Huikku bridges.
104(T)/2025 ↗	55, 119, 838, 839	Port of Raahе. Dredging operations. Areas and borders
117(T)/2025 ↗	59, 854	Off Tornio. Maintenance of aids to navigation. Buoyage
179(T)/2025 ↗	52, 833, 834, 957, 8061	Kokkola. Lighthouse Kokkolan Majakka extinguished. Buoyage

Vuoksi watercourse

T&P	Charts	Vuoksi watercourse
64(T)/2025 ↗	L	Lappeenranta. Muukonsaari. Buoyage
72(T)/2025 ↗	M	Varkaus. Kortesaaret. Buoyage

Kymijoki watercourse

T&P	Charts	Kymijoki watercourse
-	-	

Kokemäkijoki watercourse

T&P	Charts	Kokemäkijoki watercourse
-	-	

Oulujoki watercourse

T&P	Charts	Oulujoki watercourse
-	-	

Paatsjoki watercourse

T&P	Charts	Paatsjoki watercourse
-	-	

Saimaa Canal

T&P	Charts	Saimaa Canal
-	-	

Northern Baltic

T&P	Charts	Northern Baltic
11(T)/2024 ↗	952, 953, 954	Hiiumaa. Tahkuna. Light Lehtma extinguished. Buoyage

Announcements

T&P	Charts	Announcements
137(T)/2023 ↗		Helsinki. Korkeasaari...Restrictions on small craft traffic
102(T)/2024 ↗		Pargas. Hessund. Bridge construction work.
86(T)/2025 ↗		Helsinki. Hevossalmi.