



Notices to Mariners

NtM 28/2025

Notices: 216 - 220 / 10.10.2025



Table of Contents

Title	Page
Index by Area	2
Index by Chart	3
Gulf of Finland	4
Vuoksi watercourse	6
Current Preliminary (P) and Temporary (T) notices (10.10.2025)	8

Index by Area

Gulf of Finland

Charts

*216(T)/2025	18, 191, A, B
217/2025	952, A, B

Vuoksi watercourse

Charts

*218/2025	200
*219/2025	M
*220/2025	M

Index by Chart

Charts	Notices
18	*216(T)/2025
191	*216(T)/2025
200	*218/2025
952	217/2025
A	*216(T)/2025, 217/2025
B	*216(T)/2025, 217/2025
M	*219/2025, *220/2025

Gulf of Finland

*216(T)/2025

2025-10-10

Finland. Gulf of Finland. Helsinki. Sompasaari. Nihti. Areas and borders

Charts		Previous
18	(INT 1250)	202/2025 ↗
191	(INT 1159)	197/2025 ↗
A626		211/2025 ↗
B626		203/2025 ↗

Time: to approx. 31 July 2026

Cancelled: [197\(T\)/2025 ↗](#)

1

The dredging area has expanded.

Dredging operations underway Off Nihti. Area partly enclosed by floating boom with signal lights. Vessels navigating in the area are advised to reduce their speed and avoid creating wash in the vicinity of the work vessels.

2

18, 191, A626, B626

Add Area under construction

Between the following positions:

- | | | |
|------|-------------|-------------|
| (1) | 60°10.688'N | 24°58.620'E |
| (2) | 60°10.655'N | 24°58.689'E |
| (3) | 60°10.678'N | 24°58.665'E |
| (4) | 60°10.497'N | 24°58.651'E |
| (5) | 60°10.464'N | 24°58.622'E |
| (6) | 60°10.464'N | 24°58.530'E |
| (7) | 60°10.484'N | 24°58.415'E |
| (8) | 60°10.530'N | 24°58.335'E |
| (9) | 60°10.570'N | 24°58.290'E |
| (10) | 60°10.640'N | 24°58.335'E |

3

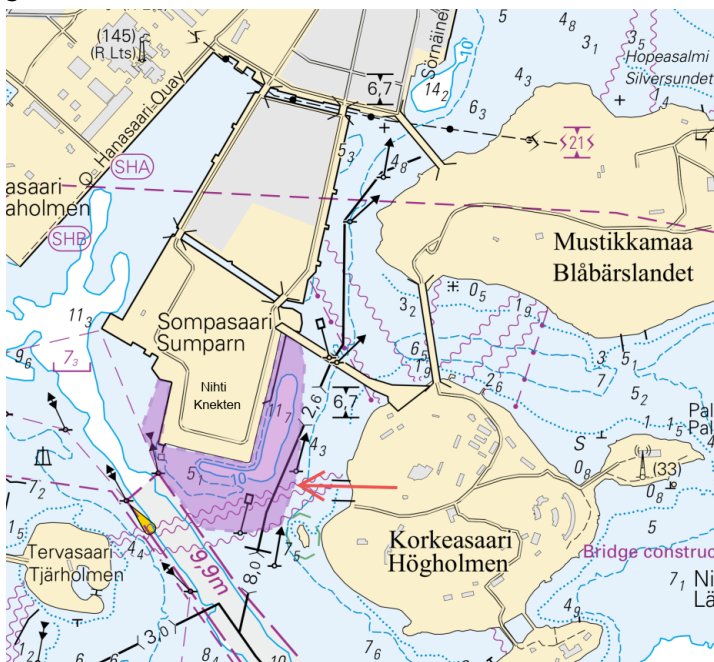


Image for reference, chart extracts not to scale of chart.

217/2025

2025-10-10

Estonia. Gulf of Finland. Off Tallinn. Lighthouse Vahemadal operational.
Buoyage

Charts	Previous
952	203/2025 ↗
A/Helsinki - Tallinna	216/2025 ↗
B/Helsinki - Tallinn	216/2025 ↗

Cancelled: 129(T)/2025 [↗](#)

1	952, A/Helsinki - Tallinna, B/Helsinki - Tallinn			
Amend			59°30.61'N	24°39.97'E
	VAHEMADAL Fl.R.10s.2/6M (exting)	→ VAHEMADAL Fl.R.10s.2/6M		

(NtM 10/160, Tallinn 2025)

Vuoksi watercourse

*218/2025

2025-10-10

Finland. Vuoksi watercourse. Lappeenranta. Ahvensaari. Kypäräsaari. Himottu. Depths

Charts

200

Previous

/

1		200			
Delete	1 ₅		61°05.710'N	28°03.650'E	
2		200			
Add	+		61°05.704'N	28°03.667'E	
3		200			
Delete	2		61°05.044'N	28°04.608'E	
4		200			
Add	⊕		61°05.013'N	28°04.588'E	
5		200			
Add	+		61°04.400'N	28°04.681'E	
6		200			

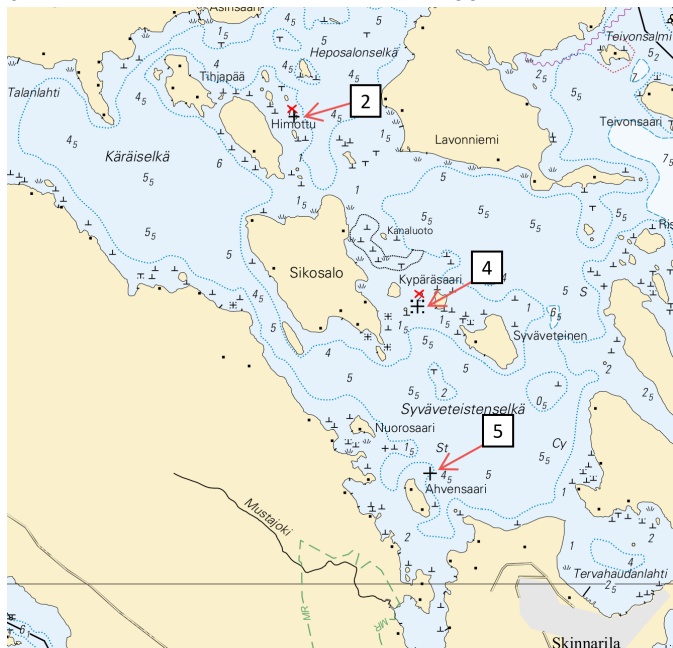


Image for reference, chart extracts not to scale of chart.

*219/2025

2025-10-10

Finland. Vuoksi watercourse. Siilinjärvi. Kuonanniemi. Depths

Charts

M265

Previous

183/2025 [↗](#)

1		M265			
Add	+		62°58.61'N	27°34.37'E	

*220/2025

2025-10-10

Finland. Vuoksi watercourse. Iisalmi. Nerכוןjärvi. Buoyage

Charts

M268

Previous

219/2025 [↗](#)

1		M268			
Delete	⌘		63°28.233'N	27°15.640'E	24273

Current Preliminary (P) and Temporary (T) notices (10.10.2025)

Gulf of Finland

T&P	Charts	Gulf of Finland
174(T)/2019 🔗	951	SE of Bol'soj Tjuters. Obstructions
296(T)/2020 🔗	17, 18, 191, 952, A, B	Helsinki. Sipoo. Areas and borders
20(T)/2021 🔗	951, A	TSS OFF ROOSHER ISLAND. Lighthouse Rodser extinguished. Notice repeated. Buoyage
228(T)/2021 🔗	951, A	Krestovjy. Lighthouse Krestovjy extinguished. Notice repeated. Buoyage
65(T)/2022 🔗	A, S	Vyborg. Destroyed leading beacon. Notice repeated. Buoyage
66(T)/2022 🔗	A, S	Vyborg. Light extinguished. Notice repeated. Buoyage
86(T)/2022 🔗	18, 191, 952, A, B	Helsinki. Kruunuvuori. Restrictions on small craft traffic. Fairways
90(T)/2022 🔗	951	Tiskolovo. Lighthouse Kajbolovo. Buoyage
230(T)/2023 🔗	18, 191, A, B	Helsinki. Hernesaari. Buoyage. Areas and borders
194(T)/2024 🔗	18, 191, A, B	Helsinki. Sompasaari. Buoyage
78(T)/2025 🔗	15, 16	Loviisa. SE of Lighthouse Tiiskeri. ODAS spar buoy. Buoyage
130(T)/2025 🔗	18, 191, A, B	Helsinki. Hernesaari. Notice repeated. Buoyage
176(T)/2025 🔗	18, 191, A, B	Helsinki. West Harbour...Restrictions on traffic. Areas and borders
189(T)/2025 🔗	952, A, B	Paldiski. Light Pakri extinguished. Buoyage
211(T)/2025 🔗	15, 16, 101, 103, 951, A	Loviisa. Valko. Geotechnical seabed surveys. Areas and borders
216(T)/2025 🔗	18, 191, A, B	Helsinki. Sompasaari. Nihti. Areas and borders

Archipelago Sea

T&P	Charts	Archipelago Sea
189(T)/2023 🔗	26, D	Pargas. Kirjala...Restrictions on traffic. Areas and borders
40(T)/2024 🔗	26, 190, D	Naantali. Raumakari. Särkäsalmi. Kirkonsalmi. Notice repeated. Buoyage
168(T)/2024 🔗	25, 26, 37, D	Pargas. Seili. ODAS buoy. Buoyage
239(T)/2024 🔗	27, 167, D	S of Utö. Söderdjupet. Measuring equipment on seabed. Areas and borders
267(T)/2024 🔗	26, 190, D	Port of Turku. Construction works. Areas and borders
162(T)/2025 🔗	24, 25, D	Pargas. S of Nagu. Temporarily withdrawn edge marks. Buoyage

Aland Sea

T&P	Charts	Aland Sea
97(T)/2025 ↗	32, 160, C	Mariehamn. Lemströms canal...Notice repeated. Areas and borders
191(T)/2025 ↗	32, 162, 753	Föglö. Brändön. Buoyage
192(T)/2025 ↗	32, 162, 753	Föglö. Finngrund. Buoyage

Bothnian Sea

T&P	Charts	Bothnian Sea
6(T)/2025 ↗	42, 125	Pori. Tahkoluoto. Notice repeated. Buoyage
165(T)/2025 ↗	955	E of Söderhamn. Light Hällgrund extinguished. Buoyage

The Quark

T&P	Charts	The Quark
238(T)/2022 ↗	48, 115, 921, F, M	Vaasa. Vaskiluoto. Notice repeated. Buoyage
247(T)/2024 ↗	48, 820, 956, 957	Vaasa. Johansson. Buoyage
262(T)/2024 ↗	48, 115, 820	Vaasa. Vaskiluoto. (N2000) (BSCD2000). Buoyage. Fairway areas
279(T)/2024 ↗	48, 115, 820, 957, 8061, 8065	Vaasa. Vaskiluoto. Buoyage. Fairway areas
112(T)/2025 ↗	48, 115, 820, 956, 957	Port of Vasa. Channel to Vasa. Areas and borders

Bay of Bothnia

T&P	Charts	Bay of Bothnia
145(T)/2024 ↗	57, 846, 958, 8071	Hailuoto. Bridge construction work. Areas and borders
164(T)/2024 ↗	57, 119, 846	Oulu. Pikisaari. Fairways
3(T)/2025 ↗	57, 60, 848, 958	Off Oulu. SW of Lighthouse Oulu 1. Lost buoy. Virtual AIS. Buoyage
83(T)/2025 ↗	57, 846	Hailuoto. Boating passages at the Riutunkari and Huikku bridges.
104(T)/2025 ↗	55, 119, 838, 839	Port of Raahе. Dredging operations. Areas and borders
117(T)/2025 ↗	59, 854	Off Tornio. Maintenance of aids to navigation. Buoyage
179(T)/2025 ↗	52, 833, 834, 957, 8061	Kokkola. Lighthouse Kokkolan Majakka extinguished. Buoyage

Vuoksi watercourse

T&P	Charts	Vuoksi watercourse
64(T)/2025 ↗	L	Lappeenranta. Muukonsaari. Buoyage
72(T)/2025 ↗	M	Varkaus. Kortesaaret. Buoyage

Kymijoki watercourse

T&P	Charts	Kymijoki watercourse
-	-	

Kokemäkijoki watercourse

T&P	Charts	Kokemäkijoki watercourse
-	-	

Oulujoki watercourse

T&P	Charts	Oulujoki watercourse
-	-	

Paatsjoki watercourse

T&P	Charts	Paatsjoki watercourse
-	-	

Saimaa Canal

T&P	Charts	Saimaa Canal
-	-	

Northern Baltic

T&P	Charts	Northern Baltic
11(T)/2024 ↗	952, 953, 954	Hiiumaa. Tahkuna. Light Lehtma extinguished. Buoyage

Announcements

T&P	Charts	Announcements
137(T)/2023 ↗		Helsinki. Korkeasaari...Restrictions on small craft traffic
102(T)/2024 ↗		Pargas. Hessund. Bridge construction work.
86(T)/2025 ↗		Helsinki. Hevossalmi.