



Notices to Mariners

NtM 29/2025

Notices: 221 - 227 / 20.10.2025



Table of Contents

Title	Page
Index by Area	2
Index by Chart	3
Bothnian Sea	4
The Quark	5
Bay of Bothnia	12
Announcements	14
Current Preliminary (P) and Temporary (T) notices (20.10.2025)	17

Index by Area

Bothnian Sea

Charts

*221/2025	41, 127, 804, 805
-----------	-------------------

The Quark

Charts

*222/2025	818, 820, 956, 957
*223/2025	820, 956, 957, 8065
*227/2025	

Bay of Bothnia

Charts

*224/2025	57, 846, 958, 8071
-----------	--------------------

Announcements

Charts

*225/2025	
*226/2025	

Index by Chart

Charts	Notices
41	*221/2025
57	*224/2025
127	*221/2025
804	*221/2025
805	*221/2025
818	*222/2025
820	*222/2025, *223/2025
846	*224/2025
956	*222/2025, *223/2025
957	*222/2025, *223/2025
958	*224/2025
8065	*223/2025
8071	*224/2025

The Quark

*222/2025

2025-10-20


Finland. The Quark. Port of Vasa. Channel to Vasa. Buoyage. Fairway areas

Charts	Previous
818	178/2025 ↗
820, 820.A, 820.B	208/2025 ↗
956	208/2025 ↗
957	(INT 1208) 208/2025 ↗

References:178/2025 [↗](#)


Cancelled: 112(T)/2025 [↗](#)







1
These amendments will be included in the upcoming editions of charts 48 and 115.
The charts will be published in 20 October 2025.

2	818, 820, 820.B			
Add 	Between the following positions:	(1)	63°05.218'N	21°32.098'E
	Delete former edge line	(2)	63°06.171'N	21°26.453'E
		(3)	63°07.265'N	21°20.978'E
		(4)	63°07.468'N	21°20.637'E
		(5)	63°07.406'N	21°20.419'E
		(6)	63°07.133'N	21°20.911'E
		(7)	63°07.052'N	21°21.366'E
		(8)	63°06.979'N	21°21.969'E
		(9)	63°06.102'N	21°26.387'E
		(10)	63°05.147'N	21°32.040'E
		(11)	63°05.218'N	21°32.098'E

3	820			
Add 			63°06.979'N	21°21.969'E
				88809

4	820			
Add 			63°06.924'N	21°22.250'E
				88810

5	820			
Move 		From	63°06.755'N	21°23.166'E
		To	63°06.745'N	21°23.156'E
				8734

6		820	Adjusted position	From 63°06.604'N 21°24.256'E	
				To 63°06.609'N 21°24.261'E	8733
7		820	Adjusted position	From 63°06.545'N 21°24.198'E	
				To 63°06.540'N 21°24.193'E	8732
8		818, 820, 820.A	Adjusted position	From 63°06.393'N 21°25.288'E	
				To 63°06.398'N 21°25.293'E	8731
9		818, 820, 820.A	Adjusted position	From 63°06.334'N 21°25.230'E	
				To 63°06.330'N 21°25.225'E	8730
10		818, 820		From 63°06.182'N 21°26.320'E	
				To 63°06.171'N 21°26.453'E	8729
11		818, 820, 820.A		From 63°06.132'N 21°26.278'E	
				To 63°06.102'N 21°26.387'E	8728
12		818, 820		From 63°05.989'N 21°27.467'E	
				To 63°06.004'N 21°27.442'E	8727
13		818, 820		From 63°05.938'N 21°27.426'E	
				To 63°05.934'N 21°27.384'E	8726
14		818, 820	Adjusted position	From 63°05.795'N 21°28.615'E	
				To 63°05.805'N 21°28.623'E	8724

15		818, 820			
Move		Adjusted position	From	63°05.745'N	21°28.574'E
			To	63°05.734'N	21°28.565'E
					8722
16		818, 820, 820.B			
Move		Adjusted position	From	63°05.601'N	21°29.763'E
			To	63°05.611'N	21°29.771'E
					8721
17		818, 820, 820.B			
Move		Adjusted position	From	63°05.551'N	21°29.721'E
			To	63°05.541'N	21°29.713'E
					8720
18		818, 820, 820.B			
Move		Adjusted position	From	63°05.407'N	21°30.909'E
			To	63°05.412'N	21°30.951'E
					8719
19		818, 820, 820.B			
Move		Adjusted position	From	63°05.357'N	21°30.868'E
			To	63°05.341'N	21°30.893'E
					8718
20		820, 820.B			
Move		Adjusted position	From	63°05.211'N	21°32.055'E
			To	63°05.221'N	21°32.076'E
					8716
21		820, 820.B			
Move		Adjusted position	From	63°05.168'N	21°32.019'E
			To	63°05.147'N	21°32.040'E
					8715

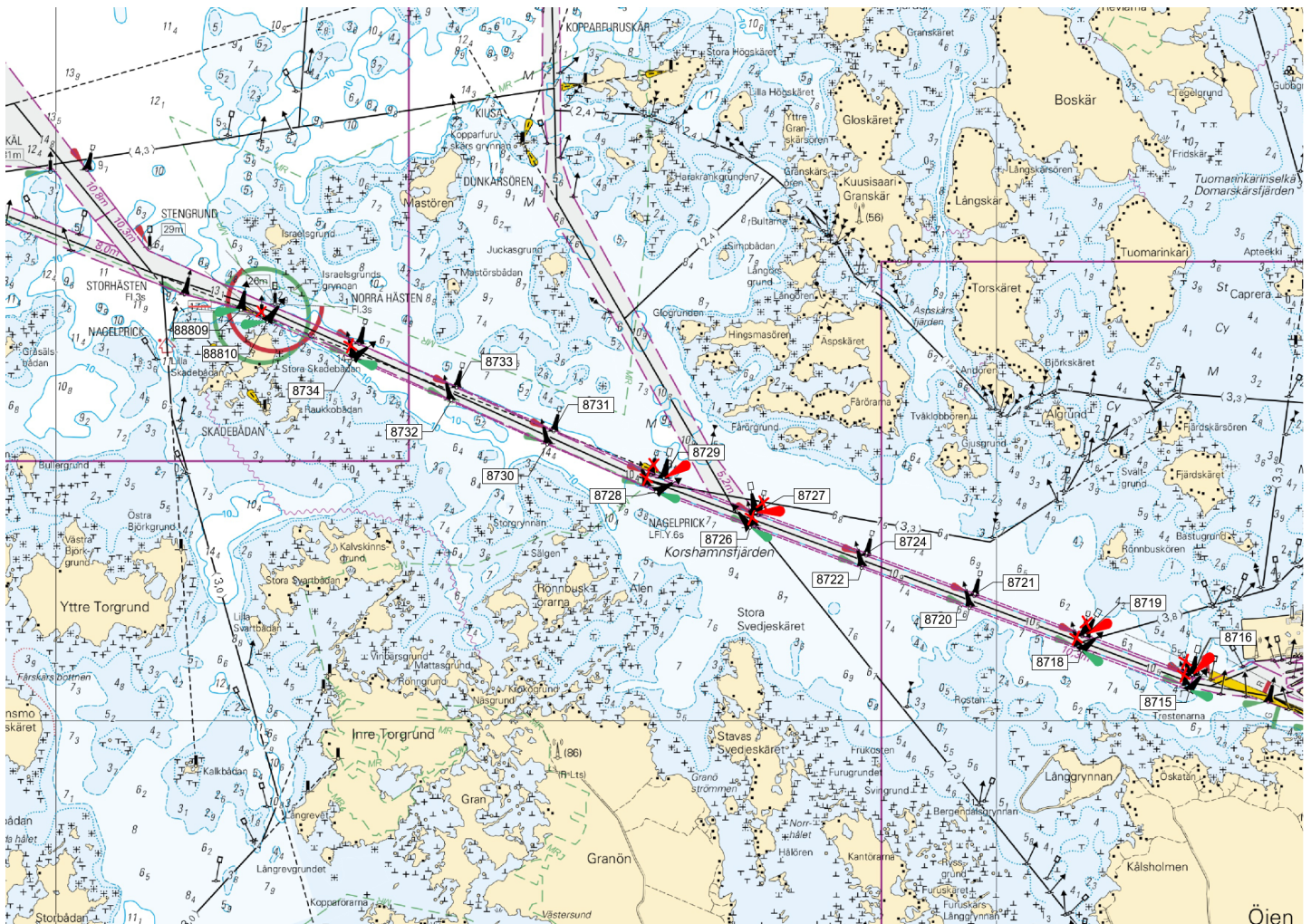


Image for reference, chart extracts not to scale of chart.

(Traficom, Helsinki/Helsingfors 2025)

*223/2025

2025-10-20

Finland. The Quark. Vaasa. Vaskiluoto. Buoyage. Fairways. Fairway areas

Charts	Previous
820, 820.B	222/2025 ↗
956	222/2025 ↗
957	(INT 1208) 222/2025 ↗
8065/Vaasa - Uumaja	111/2025 ↗

References: 178/2025 [↗](#)

Cancelled: 238(T)/2022 [↗](#), 262(T)/2024 [↗](#), 279(T)/2024 [↗](#)

1

These amendments will be included in the upcoming editions of charts 48 and 115.
The charts will be published in 20 October 2025.

2	820, 820.B			
Add	Between the following positions: Delete former edge line	(1)	63°05.147'N 21°32.040'E	
		(2)	63°05.031'N 21°33.190'E	
		(3)	63°04.966'N 21°33.444'E	
		(4)	63°04.947'N 21°33.786'E	
		(5)	63°04.979'N 21°33.801'E	
		(6)	63°04.994'N 21°33.640'E	
		(7)	63°05.016'N 21°33.546'E	
		(8)	63°05.031'N 21°33.551'E	
		(9)	63°05.148'N 21°33.168'E	
		(10)	63°05.162'N 21°33.081'E	
		(11)	63°05.205'N 21°33.075'E	
		(12)	63°05.280'N 21°32.966'E	
		(13)	63°05.295'N 21°32.965'E	
		(14)	63°05.283'N 21°32.681'E	
		(15)	63°05.261'N 21°32.617'E	
		(16)	63°05.197'N 21°32.275'E	
		(17)	63°05.218'N 21°32.098'E	
		(18)	63°05.147'N 21°32.040'E	

3	820, 820.B, 956, 957, 8065/Vaasa - Uumaja			
Delete	Between the following positions:	(1)	63°05.167'N 21°32.275'E	
		(2)	63°05.262'N 21°32.770'E	








4	820, 820.B, 956, 957, 8065/Vaasa - Uumaja			
Delete	Between the following positions:	(1)	63°05.117'N 21°32.909'E	
		(2)	63°04.970'N 21°33.635'E	
		(3)	63°04.970'N 21°33.729'E	

5	820, 820.B, 956, 957, 8065/Vaasa - Uumaja			
Delete	Between the following positions:	(1)	63°05.117'N 21°32.909'E	
		(2)	63°05.140'N 21°33.144'E	

6	820, 820.B			
Delete			63°05.224'N 21°32.104'E	7219

7	820, 820.B			
Add			63°05.230'N 21°32.108'E	88850

8	820, 820.B			
Delete			63°05.090'N 21°32.884'E	8713

9		820, 820.B			
Move				From	63°05.128'N 21°32.381'E
				To	63°05.114'N 21°32.368'E 8466
10		820, 820.B			
Move				From	63°05.117'N 21°32.648'E
				To	63°05.090'N 21°32.604'E 69892
11		820, 820.B			
Add					63°05.067'N 21°32.838'E 88853
12		820, 820.B			
Move				From	63°05.054'N 21°33.103'E
				To	63°05.031'N 21°33.190'E 8461
13		820, 820.B			
Move				From	63°04.968'N 21°33.422'E
				To	63°04.966'N 21°33.444'E 8462
14		820, 820.B			
Move		Adjusted position		From	63°04.980'N 21°33.802'E
				To	63°04.979'N 21°33.801'E 8464
15		820, 820.B			
Move				From	63°05.287'N 21°32.953'E
				To	63°05.288'N 21°32.966'E 8467

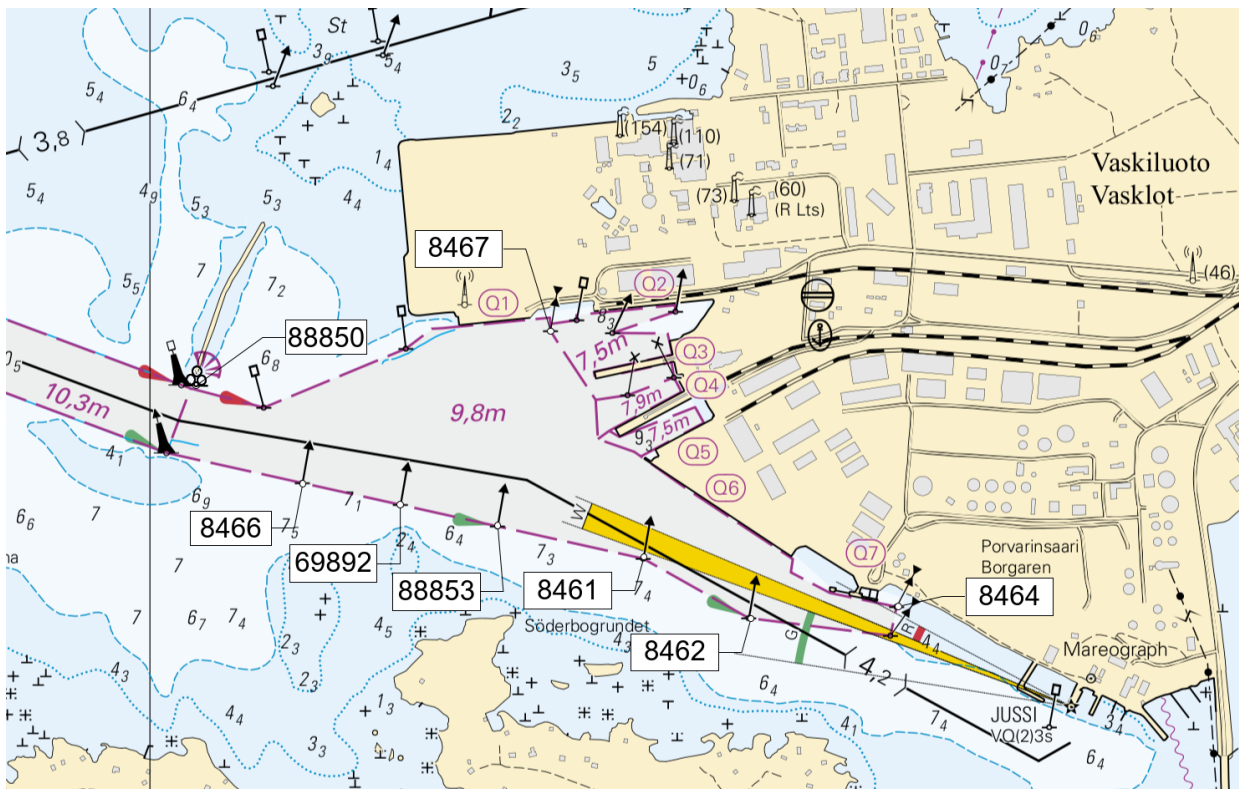


Image for reference, chart extracts not to scale of chart.

(Traficom, Helsinki/Helsingfors 2025)

***227/2025**

2025-10-20

Finland. The Quark. Port of Vasa. Channel to Vasa.

Charts

Previous

References: [178/2025](#), [223/2025](#), [222/2025](#)

1

818, 820, 820.B

The amendments of the channel to Vaasa and Port of the Vaskiluoto will be introduced on 27 October 2025.

These amendments will be included in the upcoming editions of charts 48 and 115.

The charts will be published in 20 October 2025.

2

Change

(Traficom, Helsinki/Helsingfors 2025)

Bay of Bothnia

*224/2025

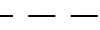
2025-10-20

Finland. Bay of Bothnia. Oulu. Pajuniemi. Buoyage. Fairways

Charts	Previous
57 (INT 1148)	201/2025 ↗
846	201/2025 ↗
958 (INT 1209)	180/2025 ↗
8071/INDEX	180/2025 ↗

1	57, 846			
Delete 	Front	65°00.463'N	25°12.163'E	9583

2	57, 846			
Delete 	Rear	65°00.370'N	25°12.235'E	9584

3	57, 846			
Delete 	Leading line between the following positions:	(1) 65°00.370'N	25°12.235'E	
		(2) 65°00.547'N	25°12.096'E	

4	57, 846, 958, 8071/INDEX			
Add 	Between the following positions:	(1) 65°01.371'N	25°11.188'E	
		(2) 65°00.928'N	25°11.876'E	
	Delete former centre line	(3) 65°00.545'N	25°12.222'E	

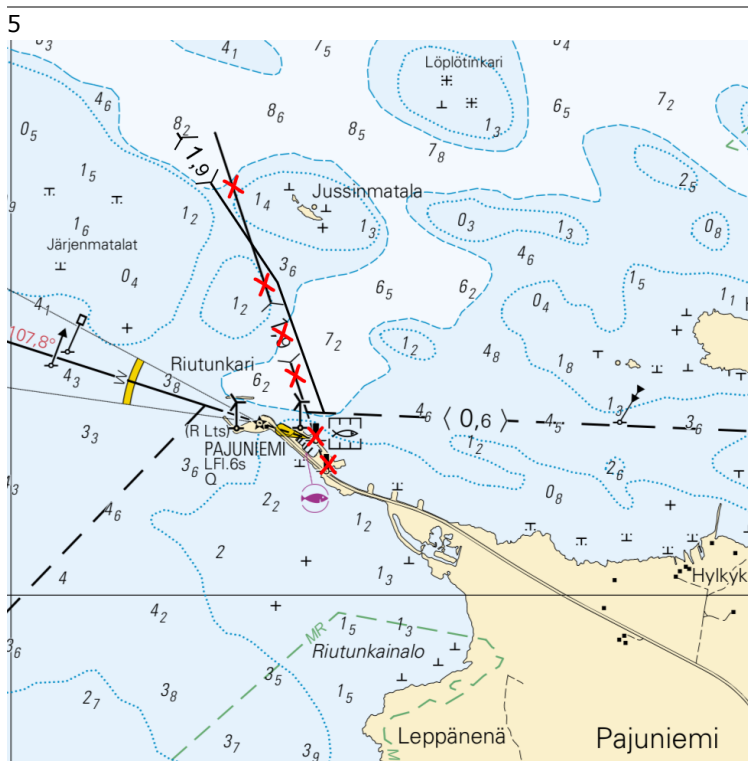


Image for reference, chart extracts not to scale of chart.

Announcements

*225/2025

2025-10-20

Finland. New chart editions. (N2000) (BSCD2000).

[Charts](#)

[Previous](#)

References:209/2025 [↗](#)

1

Nimi	Nro	INT	Mittakaava	Painos	Oikaisupäivämäärä	Myyntipäivämäärä
Namn	Nr		Skala	Upplaga	Rättelsedatum	Utgivningsdatum
Name	No.		Scale	Edition	Correction date	Release date
Vaasan saaristo, Vasa skärgård	48	1139	1:50 000	7 New Edition	20.10.2025	20.10.2025
Veckargrund, Nygrund, Vaasa & Raippaluoto	115	1195	1:20 000	4 New Edition	20.10.2025	20.10.2025
Veckargrund, Nygrund, Vasa & Replot						

(Traficom, Helsinki/Helsingfors 2025)

*226/2025

2025-10-20

Finland. New depth reference level N2000 (BSCD2000) for charts.

[Charts](#)

[Previous](#)

References:210/2025 [↗](#)

1

New depth reference level N2000 (BSCD2000) for charts

Finnish nautical charts and fairways are currently in the process of switching over to a new harmonised reference level for depth information that is tied to the national N2000 height system. The current reference level for depth information in sea areas is based on mean water level, and it will be replaced with a reference level that is tied to the N2000 vertical coordinate reference system.

The N2000 fairway and nautical chart reform is part of the Baltic Sea countries' joint project BSCD2000 (Baltic Sea Chart Datum 2000). The purpose of the project is to harmonise the interpretation of nautical chart data and available water depth in the Baltic Sea region. The migration to the new depth information reference level will affect the depth and fairway information presented on nautical charts. The changes to the information are caused by the difference between current reference level (MSL) and the zero position used in the N2000 system. Picture 3.

Integrated reference level

N2000 chart products present depth and fairway information using the N2000 height system that is tied to the Earth's crust instead of the mean sea level MSL (Mean Sea Level) / MW (Mean Water) in sea areas. When using the theoretical mean sea level, the zero level is equal to the average water level in the year in question, which means that the zero level has changed some millimetres each year. N2000 chart products present depth and fairway information using the N2000 height system that is tied to the Earth's crust without being influenced by the effects of the land uplift or sea level changes. Because the zero level in the N2000 system is below the current mean sea level (MSL), the depths on charts will, depending on the area, decrease by approximately 10–20 cm due to the reference level, and the prevailing water level will increase correspondingly. The available water depth does not change when sea level data in the N2000 format is taken into account. Picture 4.

The importance of water level in relation to the depth available will be accentuated. The Finnish Meteorological Institute has since September 2021 published its sea level observations and forecasts in the N2000 format as well as in relation to the theoretical mean sea level. The data is available on the Institute's website (<https://en.ilmatieteenlaitos.fi/sea-level>).

During the transition period, charts in accordance with both the old and the new system will be used. Therefore, it is important to check the reference level of the chart used and the corresponding water level reading. The list of nautical chart products always provides up-to-date information on the valid edition of the charts and the reference level used therein.

List of nautical chart products: <https://www.traficom.fi/fi/merikartoituksen-tuoteluettelo>

More information about the N2000 fairway and nautical chart reform: <https://www.traficom.fi/en/transport/maritime/n2000-fairway-and-nautical-chart-reform-improved>.

2

New channel depth instructions:

<https://www.traficom.fi/en/news/new-channel-depth-instructions-enter-force-15-november-2021>

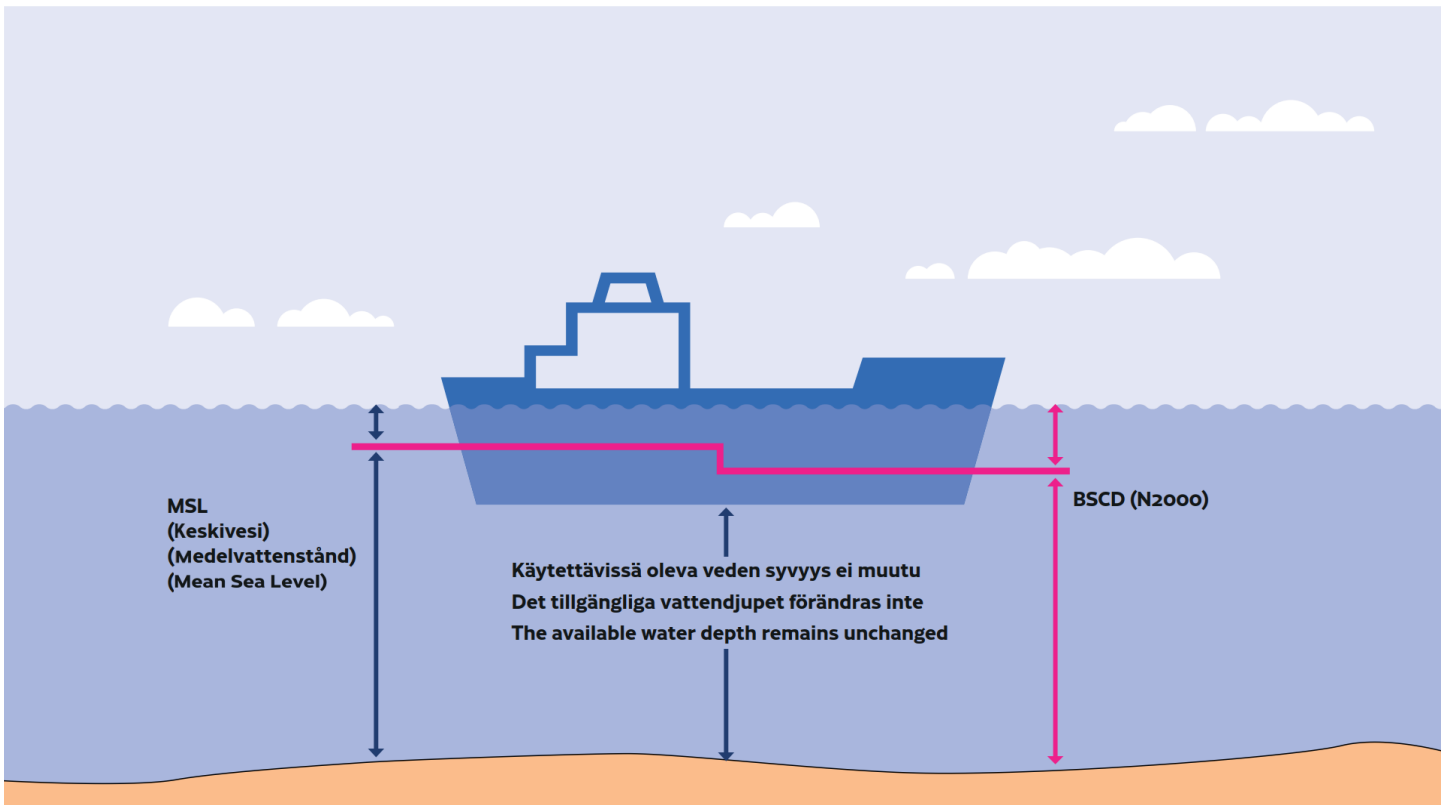
Sailing Directions for Finnish waters:

<https://www.traficom.fi/en/services/sailing-directions-finnish-waters>

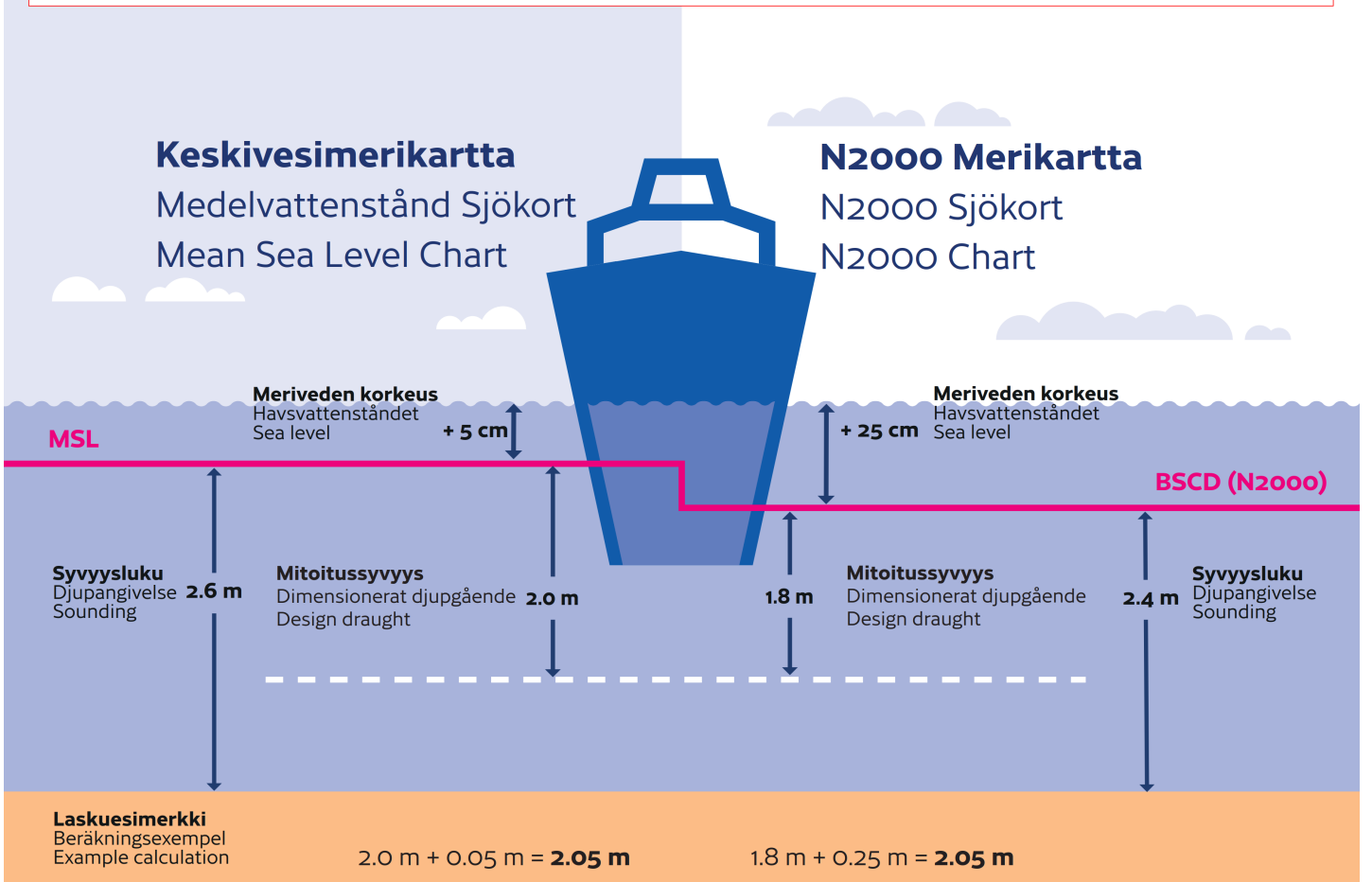
Presentation of fairway information on Finnish S-57 ENCs

<https://www.traficom.fi/fi/ajankohtaista/vaylatietojen-esitystapa-muuttuu-suomalaisilla-s-57-enc-kartoilla>.

Fairway usage in commercial shipping: <https://www.traficom.fi/en/transport/maritime/use-fairways-merchant-shipping>



Esimerkkikuva vertaustason vaikutuksista / Bild som exemplifierar referensnivåns inverkan / Figure illustrating the effect of the reference level



Current Preliminary (P) and Temporary (T) notices (20.10.2025)

Gulf of Finland

T&P	Charts	Gulf of Finland
174(T)/2019 🔗	951	SE of Bol'soj Tjuters. Obstructions
296(T)/2020 🔗	17, 18, 191, 952, A, B	Helsinki. Sipoo. Areas and borders
20(T)/2021 🔗	951, A	TSS OFF ROOSHER ISLAND. Lighthouse Rodser extinguished. Notice repeated. Buoyage
228(T)/2021 🔗	951, A	Krestovj. Lighthouse Krestovj extinguished. Notice repeated. Buoyage
65(T)/2022 🔗	A, S	Vyborg. Destroyed leading beacon. Notice repeated. Buoyage
66(T)/2022 🔗	A, S	Vyborg. Light extinguished. Notice repeated. Buoyage
86(T)/2022 🔗	18, 191, 952, A, B	Helsinki. Kruunuvuori. Restrictions on small craft traffic. Fairways
90(T)/2022 🔗	951	Tiskolovo. Lighthouse Kajbolovo. Buoyage
230(T)/2023 🔗	18, 191, A, B	Helsinki. Hernesaari. Buoyage. Areas and borders
194(T)/2024 🔗	18, 191, A, B	Helsinki. Sompasaari. Buoyage
78(T)/2025 🔗	15, 16	Loviisa. SE of Lighthouse Tiiskeri. ODAS spar buoy. Buoyage
130(T)/2025 🔗	18, 191, A, B	Helsinki. Hernesaari. Notice repeated. Buoyage
176(T)/2025 🔗	18, 191, A, B	Helsinki. West Harbour...Restrictions on traffic. Areas and borders
189(T)/2025 🔗	952, A, B	Paldiski. Light Pakri extinguished. Buoyage
211(T)/2025 🔗	15, 16, 101, 103, 951, A	Loviisa. Valko. Geotechnical seabed surveys. Areas and borders
216(T)/2025 🔗	18, 191, A, B	Helsinki. Sompasaari. Nihti. Areas and borders

Archipelago Sea

T&P	Charts	Archipelago Sea
189(T)/2023 🔗	26, D	Pargas. Kirjala...Restrictions on traffic. Areas and borders
40(T)/2024 🔗	26, 190, D	Naantali. Raumakari. Särkänalmi. Kirkonsalmi. Notice repeated. Buoyage
168(T)/2024 🔗	25, 26, 37, D	Pargas. Seili. ODAS buoy. Buoyage
239(T)/2024 🔗	27, 167, D	S of Utö. Söderdjupet. Measuring equipment on seabed. Areas and borders
267(T)/2024 🔗	26, 190, D	Port of Turku. Construction works. Areas and borders
162(T)/2025 🔗	24, 25, D	Pargas. S of Nagu. Temporarily withdrawn edge marks. Buoyage

Aland Sea

T&P	Charts	Aland Sea
97(T)/2025 ↗	32, 160, C	Mariehamn. Lemströms canal...Notice repeated. Areas and borders
191(T)/2025 ↗	32, 162, 753	Föglö. Brändön. Buoyage
192(T)/2025 ↗	32, 162, 753	Föglö. Finngrund. Buoyage

Bothnian Sea

T&P	Charts	Bothnian Sea
6(T)/2025 ↗	42, 125	Pori. Tahkoluoto. Notice repeated. Buoyage
165(T)/2025 ↗	955	E of Söderhamn. Light Hällgrund extinguished. Buoyage

The Quark

T&P	Charts	The Quark
247(T)/2024 ↗	48, 820, 956, 957	Vaasa. Johansson. Buoyage

Bay of Bothnia

T&P	Charts	Bay of Bothnia
145(T)/2024 ↗	57, 846, 958, 8071	Hailuoto. Bridge construction work. Areas and borders
164(T)/2024 ↗	57, 119, 846	Oulu. Pikisaari. Fairways
3(T)/2025 ↗	57, 60, 848, 958	Off Oulu. SW of Lighthouse Oulu 1. Lost buoy. Virtual AIS. Buoyage
83(T)/2025 ↗	57, 846	Hailuoto. Boating passages at the Riutunkari and Huikku bridges.
104(T)/2025 ↗	55, 119, 838, 839	Port of Raahe. Dredging operations. Areas and borders
117(T)/2025 ↗	59, 854	Off Tornio. Maintenance of aids to navigation. Buoyage
179(T)/2025 ↗	52, 833, 834, 957, 8061	Kokkola. Lighthouse Kokkolan Majakka extinguished. Buoyage

Vuoksi watercourse

T&P	Charts	Vuoksi watercourse
64(T)/2025 ↗	L	Lappeenranta. Muukonsaari. Buoyage
72(T)/2025 ↗	M	Varkaus. Kortesaaret. Buoyage

Kymijoki watercourse

T&P	Charts	Kymijoki watercourse
-	-	

Kokemäijoki watercourse

T&P	Charts	Kokemäijoki watercourse
-	-	

Oulujoki watercourse

T&P	Charts	Oulujoki watercourse
-	-	

Paatsjoki watercourse

T&P	Charts	Paatsjoki watercourse
-	-	

Saimaa Canal

T&P	Charts	Saimaa Canal
-	-	

Northern Baltic

T&P	Charts	Northern Baltic
11(T)/2024 ↗	952, 953, 954	Hiiumaa. Tahkuna. Light Lehtma extinguished. Buoyage

Announcements

T&P	Charts	Announcements
137(T)/2023 ↗		Helsinki. Korkeasaari...Restrictions on small craft traffic
102(T)/2024 ↗		Pargas. Hessund. Bridge construction work.
86(T)/2025 ↗		Helsinki. Hevossalmi.