



# Notices to Mariners

## NtM 30/2025

Notices: 228 - 242 / 31.10.2025



# Table of Contents

<b>Title</b>	<b>Page</b>
Index by Area	2
Index by Chart	3
Gulf of Finland	4
Archipelago Sea	7
Aland Sea	8
Bothnian Sea	11
The Quark	12
Bay of Bothnia	13
Northern Baltic	16
Announcements	17
Current Preliminary (P) and Temporary (T) notices (31.10.2025)	18

# Index by Area

## Gulf of Finland

### Charts

*228(T)/2025	18, 191, 192, A, B
*229(T)/2025	17, 103, A
*230/2025	14, 134, 951, A

## Archipelago Sea

### Charts

*232/2025	27, 167, D
-----------	------------

## Aland Sea

### Charts

*233/2025	32, 160
*234/2025	32, 162, 753
*235/2025	32, 160, 756, 953
*236/2025	32, 160, 753, 755, 756

## Bothnian Sea

### Charts

241(T)/2025	956, 957, 8065
-------------	----------------

## The Quark

### Charts

*238/2025	48, 115
-----------	---------

## Bay of Bothnia

### Charts

*237/2025	51, 831, 832
*239(T)/2025	52, 53, 833, 834, 835, 957, 8061, 8071

## Northern Baltic

### Charts

*242/2025	31, 953, 954
-----------	--------------

## Announcements

### Charts

*231(T)/2025	
240/2025	

# Index by Chart

<b>Charts</b>	<b>Notices</b>
14	*230/2025
17	*229(T)/2025
18	*228(T)/2025
27	*232/2025
31	*242/2025
32	*233/2025, *234/2025, *235/2025, *236/2025
48	*238/2025
51	*237/2025
52	*239(T)/2025
53	*239(T)/2025
103	*229(T)/2025
115	*238/2025
134	*230/2025
160	*233/2025, *235/2025, *236/2025
162	*234/2025
167	*232/2025
191	*228(T)/2025
192	*228(T)/2025
753	*234/2025, *236/2025
755	*236/2025
756	*235/2025, *236/2025
831	*237/2025
832	*237/2025
833	*239(T)/2025
834	*239(T)/2025
835	*239(T)/2025
951	*230/2025
953	*235/2025, *242/2025
954	*242/2025
956	241(T)/2025
957	*239(T)/2025, 241(T)/2025
8061	*239(T)/2025
8065	241(T)/2025
8071	*239(T)/2025
A	*228(T)/2025, *229(T)/2025, *230/2025
B	*228(T)/2025
D	*232/2025

# Gulf of Finland

\*228(T)/2025

2025-10-31

Finland. Gulf of Finland. Helsinki. Santahamina. Areas and borders

Charts		Previous
18	(INT 1250)	216/2025 <a href="#">↗</a>
191	(INT 1159)	216/2025 <a href="#">↗</a>
192	(INT 1160)	142/2025 <a href="#">↗</a>
A625, A626, A626.2		217/2025 <a href="#">↗</a>
B625, B626, B626.2		217/2025 <a href="#">↗</a>

Time: to 2 May 2026

Cancelled: 86(T)/2025 [↗](#)

1

Hevossalmi swing bridge will be closed for the winter season.

More information: Phone 358 294 83 1133.

2

18, 191, 192, A625, A626, A626.2, B625, B626, B626.2

Add



Traffic restrictions

60°09.47'N

25°02.96'E

(Puolustuskiinteistöt/Försvarsfastigheter/Defence Properties Finland, 2025)

\*229(T)/2025

2025-10-31

Finland. Gulf of Finland. Porvoo. Kilpilahti. Dredging and excavation. Areas and borders

Charts		Previous
17	(INT 1249)	202/2025 <a href="#">↗</a>
103.C, 103.C2	(INT 12491)	211/2025 <a href="#">↗</a>
A622, A622.1, A622.2		228/2025 <a href="#">↗</a>

Time: approx. from 1 November to approx. 25 November 2025

1

Dredging, excavation and diving operations underway in N of the Port of Kilpilahti.

Vessels navigating in the area are advised to reduce their speed and avoid creating wash in the vicinity of the work vessels.

More information: Uponor Infra Marine Services Oy, Juha Kainulainen

Email: juha.kainulainen@georgfischer.com

Phone. 358 40 860 7052

2

17, 103.C, 103.C2, A622, A622.1, A622.2

Add



Dredging and excavation  
between positions:

(1) 60°18.95'N 25°33.52'E

(2) 60°19.21'N 25°33.40'E

(3) 60°19.32'N 25°33.64'E

(4) 60°19.29'N 25°34.06'E

(5) 60°18.92'N 25°33.88'E

(6) 60°18.95'N 25°33.52'E

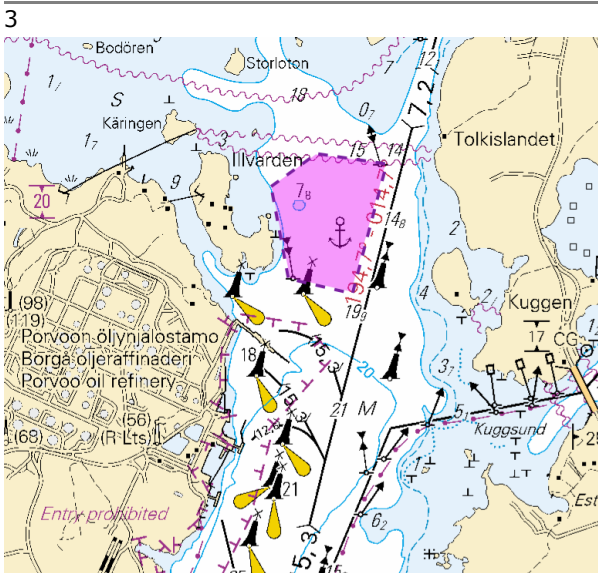


Image for reference, chart extracts not to scale of chart.

(Traficom, Helsinki/Helsingfors 2025)

**\*230/2025** **2025-10-31**  
**Finland. Gulf of Finland. Hamina. Hillonniemi. Ports**

Charts		Previous
14	(INT 1246)	144/2025 <a href="#">↗</a>
134	(INT 1153)	247/2023 <a href="#">↗</a>
951		211/2025 <a href="#">↗</a>
A607, A609, A609.2		229/2025 <a href="#">↗</a>

1 14, 134, 951, A607, A609, A609.2

- (1) 60°31.492'N 27°09.988'E
- (2) 60°31.498'N 27°10.046'E
- (3) 60°31.552'N 27°10.024'E
- (4) 60°31.549'N 27°10.002'E

Add  Quay between the following positions:

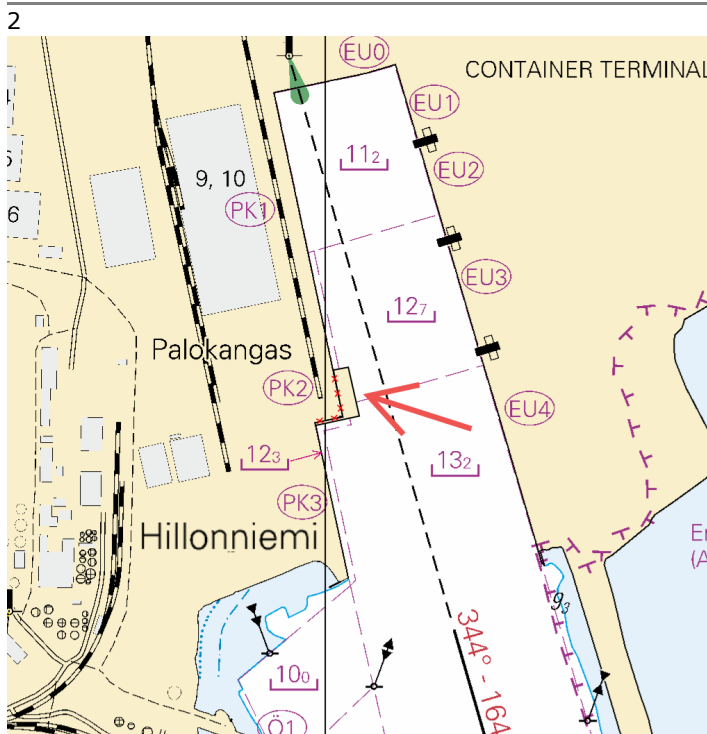


Image for reference, chart extracts not to scale of chart.



# Archipelago Sea

\*232/2025


2025-10-31

Finland. Archipelago Sea. S of Utö. Söderdjupet. Withdrawn measuring equipment. Areas and borders

Charts		Previous
27	(INT 1190)	213/2025 <a href="#">↗</a>
167	(INT 11901)	213/2025 <a href="#">↗</a>
D713		213/2025 <a href="#">↗</a>

Cancelled: 239(T)/2024 [↗](#)

---

1	27, 167, D713	59°45.405'N	21°22.131'E
Delete			

(Ilmatieteen laitos/Meteorologiska institutet/Finnish Meteorological Institute, Helsinki/Helsingfors 2025)

---

---

# Aland Sea

\*233/2025

2025-10-31

Finland. Aland Sea. Mariehamn. Lemströms canal. Operations completed.  
Areas and borders

Charts		Previous
32	(INT 1195)	214/2025 <a href="#">↗</a>
160	(INT 1156)	214/2025 <a href="#">↗</a>

Cancelled: 97(T)/2025 [↗](#)

1 32, 160  
Delete Traffic restrictions 60°05.80'N 20°00.94'E

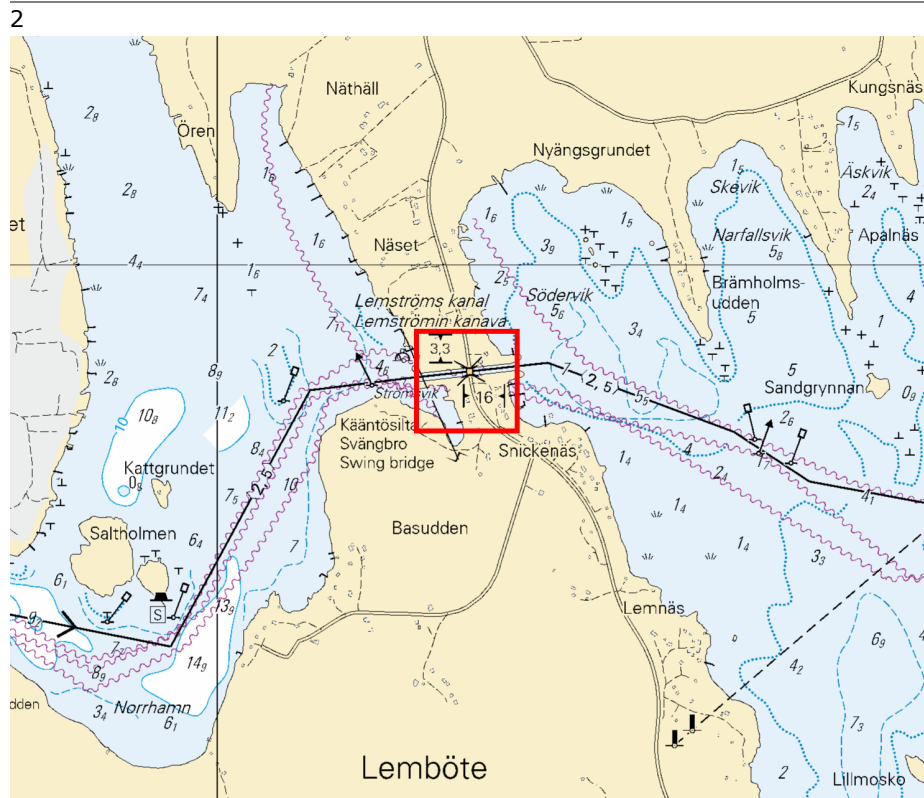


Image for reference, chart extracts not to scale of chart.

(Traficom, Helsinki/Helsingfors 2025)

\*234/2025

2025-10-31

Finland. Aland Sea. Föglö. Brändön. Light Brändökobben operational.  
Buoyage

Charts		Previous
32	(INT 1195)	233/2025 <a href="#">↗</a>
162	(INT 1157)	192/2025 <a href="#">↗</a>
753		192/2025 <a href="#">↗</a>

Cancelled: 191(T)/2025 [↗](#)

---

1			32, 162, 753			
Amend						
	BRÄNDÖKOB BEN		BRÄNDÖKOB BEN	60°01.474'N	20°18.703'E	6248, (C4567)
	Fl.3s (exting)		Fl.3s			

(Traficom, Helsinki/Helsingfors 2025)

---

---

\*235/2025

2025-10-31

Finland. Aland Sea. Jomala. Ärtskär. Buoyage

Charts		Previous
32	(INT 1195)	234/2025 <a href="#">↗</a>
160	(INT 1156)	233/2025 <a href="#">↗</a>
756, 756.B		214/2025 <a href="#">↗</a>
953		157/2025 <a href="#">↗</a>




---

1			32, 160, 756, 953			
Amend				60°01.243'N	19°53.028'E	6450

---

2			32, 160, 756			
Amend				60°01.370'N	19°53.820'E	82706

---

3			32, 160, 756, 756.B			
Amend				60°02.017'N	19°53.632'E	6449

(Traficom, Helsinki/Helsingfors 2025)

---

---

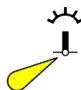


\*236/2025

2025-10-31

Finland. Aland Sea. Lemland. Kvarngrund. Buoyage

Charts		Previous
32	(INT 1195)	235/2025 <a href="#">↗</a>
160	(INT 1156)	235/2025 <a href="#">↗</a>
753		234/2025 <a href="#">↗</a>
755		/
756, 756.A		235/2025 <a href="#">↗</a>

1 32, 160, 753, 755, 756, 756.A

Amend    59°59.553'N 20°01.081'E 6388, (C4533 )

KVARNGRUND KVARNGRUND

(Traficom, Helsinki/Helsingfors 2025)

---

---

# Bothnian Sea

241(T)/2025

2025-10-31

Sweden. Bothnian Sea. Örnsköldsvik. Ullånger. Lights unlit. Buoyage

Charts	Previous
956	223/2025 <a href="#">↗</a>
957	(INT 1208) 239/2025 <a href="#">↗</a>
8065/Vaasa - Uumaja	223/2025 <a href="#">↗</a>

Time: Until further notice

1

The two lights listed in the table below are unlit and replaced with temporary lights with light character VQ.Y.

2 956, 957, 8065/Vaasa - Uumaja

Amend	 SKAGS FLASOR FI(3)9s		 SKAGS FLASOR VQ.Y	63°12.448'N	19°05.171'E
-------	---	---	--	-------------	-------------

3 956

Amend	 GNÄGGEN VQ(6)6s		 GNÄGGEN VQ.Y	62°56.808'N	18°37.154'E
-------	---	---	--	-------------	-------------

(Ufs 1091/19663(T), Norrköping 2025)

# The Quark

\*238/2025

2025-10-31

Finland. The Quark. Vaasa. Vaskiluoto. Buoyage

## Charts

48

(INT 1139)

## Previous

/

115.C

(INT 11391)

/

References:223/2025 [↗](#)

---

1 48, 115.C  
Amend    63°05.230'N 21°32.108'E 88850

(Traficom, Helsinki/Helsingfors 2025)

---

---


# Bay of Bothnia

\*237/2025

2025-10-31

Finland. Bay of Bothnia. Jakobstad. Alholmen. Fairway areas

Charts		Previous
51, 51.A	(INT 1142)	288/2024 <a href="#">↗</a>
831, 831.B		177/2023 <a href="#">↗</a>
832		173/2023 <a href="#">↗</a>

1	51, 51.A, 831, 831.B, 832			
Add 	Swept area edge line between positions:	(1)	63°42.657'N	22°41.300'E
		(2)	63°42.664'N	22°41.297'E
		(3)	63°42.655'N	22°41.290'E
		(4)	63°42.589'N	22°41.350'E
		(5)	63°42.577'N	22°41.285'E
		(6)	63°42.548'N	22°41.297'E
		(7)	63°42.565'N	22°41.387'E
		(8)	63°42.657'N	22°41.300'E
	Delete former edge line			

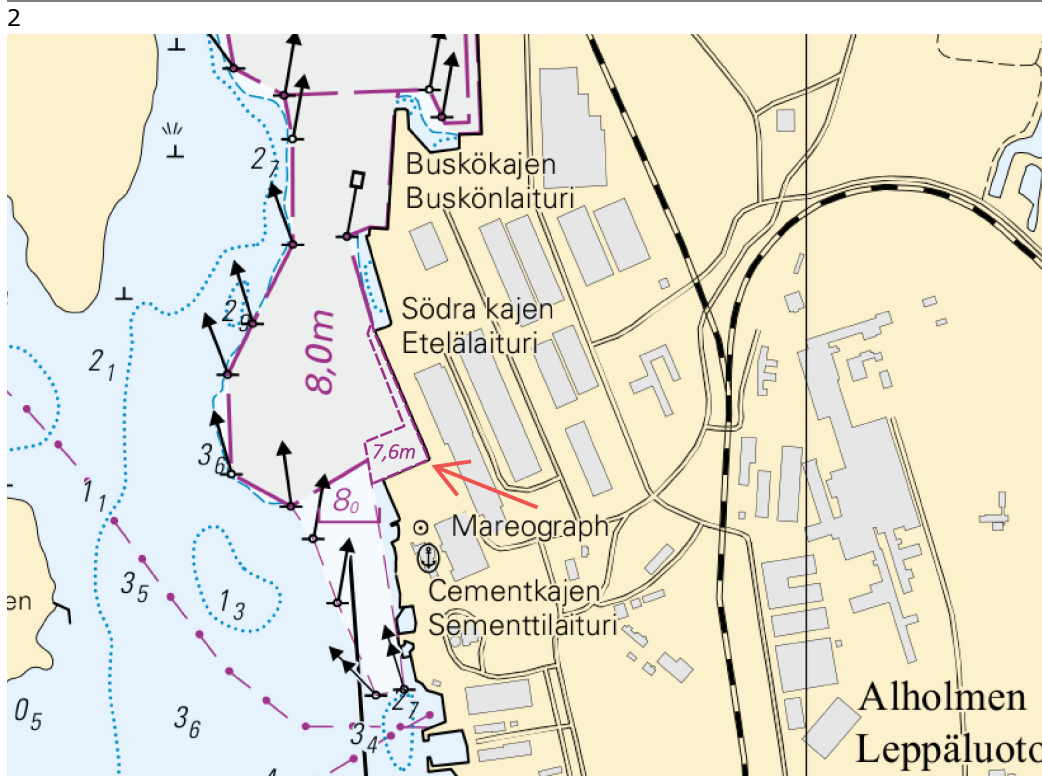


Image for reference, chart extracts not to scale of chart.

(Traficom, Helsinki/Helsingfors 2025)

\*239(T)/2025

2025-10-31

Finland. Bay of Bothnia. Kokkola. Lohtaja. Firing exercise. Areas and borders

Charts		Previous
52	(INT 1143)	179/2025 <a href="#">↗</a>
53	(INT 1144)	149/2025 <a href="#">↗</a>
833		179/2025 <a href="#">↗</a>
834, 834.A		179/2025 <a href="#">↗</a>
835		99/2025 <a href="#">↗</a>
957	(INT 1208)	223/2025 <a href="#">↗</a>
8061/INDEX		179/2025 <a href="#">↗</a>
8071/INDEX		224/2025 <a href="#">↗</a>

Time: November 12 2025 07:00 – 24:00 and November 13 - 15 2025 at all times

1

Finnish Defence Forces will be firing air defence weapons at Lohtaja firing range November 12 2025 07:00 – 24:00 and November 13 - 15 2025 at all times. In addition, anti-aircraft cannons will fire exceptionally on Nov 13 and Nov 14 between 00:00 – 07:00. Because of eye safety, it is prohibited to observe any aircrafts involved in this exercise with binoculars or other optical magnifying devices.

The firing range will be cordoned November 11 16:00 - November 20 12:00 hrs.

Enquiries: phone 358 299 442191. <https://puolustusvoimat.fi/en/current-issues/firings-and-noise>

2

Add

52, 53, 833, 834, 834.A, 835, 957, 8061/INDEX, 8071/INDEX

Danger area

- |      |            |            |
|------|------------|------------|
| (1)  | 63°58.34'N | 23°15.83'E |
| (2)  | 63°58.24'N | 23°12.20'E |
| (3)  | 63°58.49'N | 23°07.85'E |
| (4)  | 63°57.60'N | 22°59.18'E |
| (5)  | 63°59.92'N | 22°57.57'E |
| (6)  | 64°00.16'N | 22°50.94'E |
| (7)  | 64°06.29'N | 22°50.43'E |
| (8)  | 64°11.62'N | 22°55.14'E |
| (9)  | 64°16.01'N | 23°05.23'E |
| (10) | 64°09.63'N | 23°24.79'E |
| (11) | 63°58.34'N | 23°15.83'E |

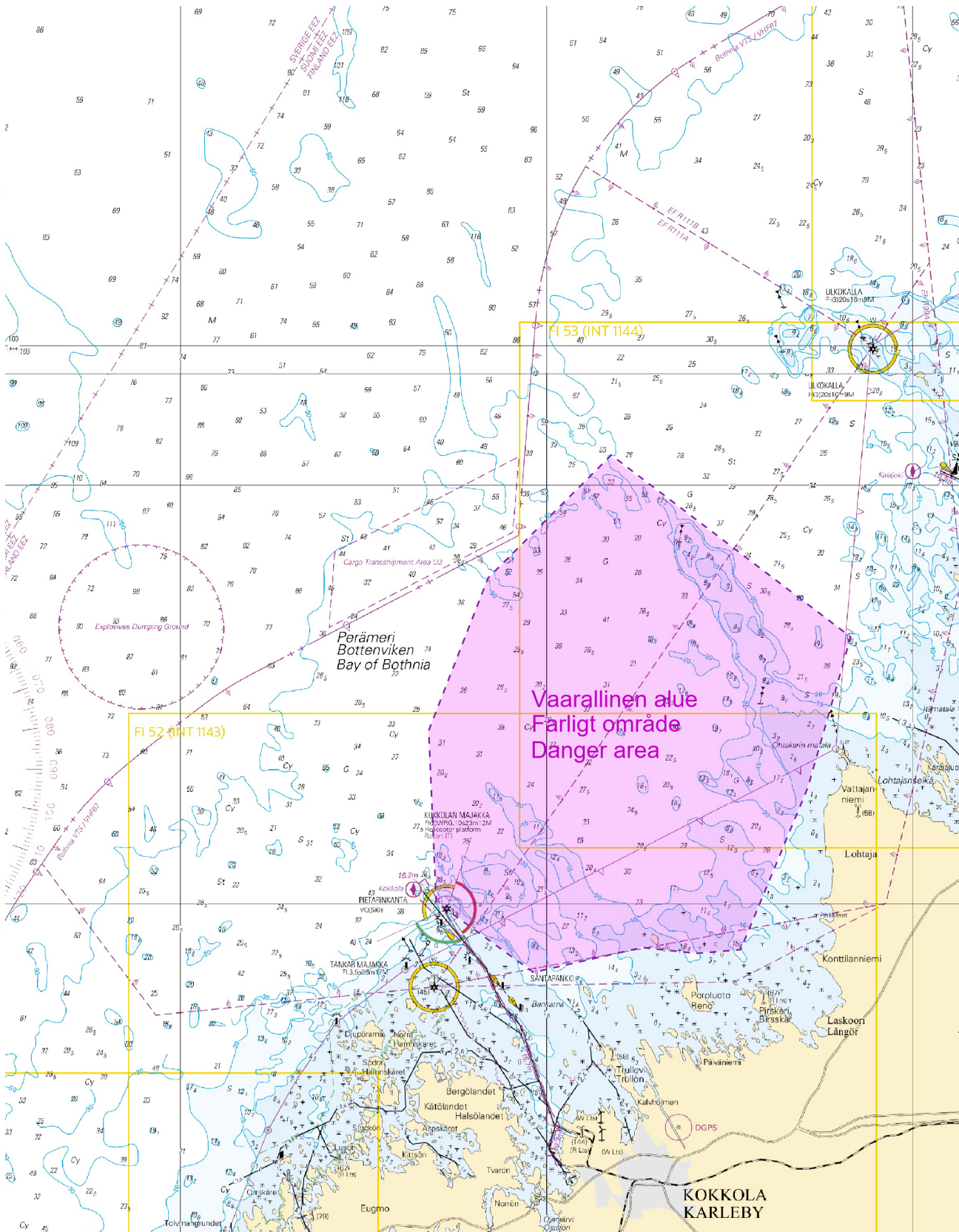


Image for reference, chart extracts not to scale of chart.

(Puolustusvoimat/Försvarsmakten/The Finnish Defence Forces 2025)

# Northern Baltic

\*242/2025

2025-10-31

Finland. Northern Baltic. Föglö. TSS South Åland Sea. Buoyage

Charts		Previous
31	(INT 1194)	131/2025 <a href="#">↗</a>
953		235/2025 <a href="#">↗</a>
954	(INT 1210)	135/2025 <a href="#">↗</a>

1

Amend

HALDER

→

HALDER

31, 953, 954

59°42.492'N 20°33.072'E 43711

(Traficom, Helsinki/Helsingfors 2025)

# Announcements

\*231(T)/2025

2025-10-31

Finland. Gulf of Finland. Off Hanko. Off Porkkala. MARCOM Mine countermeasure exercise.

[Charts](#)

[Previous](#)

Time: from 3 November to 14 November 2025

---

1

NATO MARCOM SNMCMG1 Mine countermeasure exercise takes place in weeks 45 and 46 in the Gulf of Finland, off Hanko and Porkkala Peninsula. Vessels are requested to avoid navigating in the vicinity of the units. Safety distance 1 nautical mile.

(Puolustusvoimat/Försvarsmakten/The Finnish Defence Forces 2025)

---

---

240/2025

2025-10-31

Sweden. Bothnian Sea. SW of Husum. Light Husum. Light sectors.

[Charts](#)

[Previous](#)

---

1 956, 957, 8065/Vaasa - Uumaja

Amended sectors at light Husum (Iso.4s). See Ufs 1089/19634, Norrköping 2025.  
<https://ufs.sjofartsverket.se/pdf/2025/1089EN.pdf>

Charts: 956,957,8065/Vaasa - Uumaja

---

2

140.0 - 188.0	R
188.0 - 207.6	G
207.6 - 222.0	W
222.0 - 252.0	R
252.0 - 269.0	G
269.0 - 279.0	W
279.0 - 291.0	R
291.0 - 301.0	G
301.0 - 305.0	W
305.0 - 315.0	R
315.0 - 324.0	G
324.0 - 140.0	Dk

Image for reference, chart extracts not to scale of chart.

(Ufs 1089/19634, Norrköping 2025)

---

---

# Current Preliminary (P) and Temporary (T) notices (31.10.2025)

## Gulf of Finland

T&P	Charts	Gulf of Finland
174(T)/2019 <a href="#">🔗</a>	951	SE of Bol'soj Tjuters. Obstructions
296(T)/2020 <a href="#">🔗</a>	17, 18, 191, 952, A, B	Helsinki. Sipoo. Areas and borders
20(T)/2021 <a href="#">🔗</a>	951, A	TSS OFF ROOSHER ISLAND. Lighthouse Rodser extinguished. Notice repeated. Buoyage
228(T)/2021 <a href="#">🔗</a>	951, A	Krestovyy. Lighthouse Krestovyy extinguished. Notice repeated. Buoyage
65(T)/2022 <a href="#">🔗</a>	A, S	Vyborg. Destroyed leading beacon. Notice repeated. Buoyage
66(T)/2022 <a href="#">🔗</a>	A, S	Vyborg. Light extinguished. Notice repeated. Buoyage
86(T)/2022 <a href="#">🔗</a>	18, 191, 952, A, B	Helsinki. Kruunuvuori. Restrictions on small craft traffic. Fairways
90(T)/2022 <a href="#">🔗</a>	951	Tiskolovo. Lighthouse Kajbolovo. Buoyage
230(T)/2023 <a href="#">🔗</a>	18, 191, A, B	Helsinki. Hernesaari. Buoyage. Areas and borders
194(T)/2024 <a href="#">🔗</a>	18, 191, A, B	Helsinki. Sompasaari. Buoyage
78(T)/2025 <a href="#">🔗</a>	15, 16	Loviisa. SE of Lighthouse Tiiskeri. ODAS spar buoy. Buoyage
130(T)/2025 <a href="#">🔗</a>	18, 191, A, B	Helsinki. Hernesaari. Notice repeated. Buoyage
176(T)/2025 <a href="#">🔗</a>	18, 191, A, B	Helsinki. West Harbour...Restrictions on traffic. Areas and borders
189(T)/2025 <a href="#">🔗</a>	952, A, B	Paldiski. Light Pakri extinguished. Buoyage
211(T)/2025 <a href="#">🔗</a>	15, 16, 101, 103, 951, A	Loviisa. Valko. Geotechnical seabed surveys. Areas and borders
216(T)/2025 <a href="#">🔗</a>	18, 191, A, B	Helsinki. Sompasaari. Nihti. Areas and borders
228(T)/2025 <a href="#">🔗</a>	18, 191, 192, A, B	Helsinki. Santahamina. Areas and borders
229(T)/2025 <a href="#">🔗</a>	17, 103, A	Porvoo. Kilpilahti. Dredging and excavation. Areas and borders

## Archipelago Sea

T&P	Charts	Archipelago Sea
189(T)/2023 <a href="#">🔗</a>	26, D	Pargas. Kirjala...Restrictions on traffic. Areas and borders
40(T)/2024 <a href="#">🔗</a>	26, 190, D	Naantali. Raumakari. Särkänsalmi. Kirkonsalmi. Notice repeated. Buoyage
168(T)/2024 <a href="#">🔗</a>	25, 26, 37, D	Pargas. Seili. ODAS buoy. Buoyage
267(T)/2024 <a href="#">🔗</a>	26, 190, D	Port of Turku. Construction works. Areas and borders
162(T)/2025 <a href="#">🔗</a>	24, 25, D	Pargas. S of Nagu. Temporarily withdrawn edge marks. Buoyage

## Aland Sea

T&P	Charts	Aland Sea
192(T)/2025 <a href="#">↗</a>	32, 162, 753	Föglö. Finngrund. Buoyage

## Bothnian Sea

T&P	Charts	Bothnian Sea
6(T)/2025 <a href="#">↗</a>	42, 125	Pori. Tahkoluoto. Notice repeated. Buoyage
165(T)/2025 <a href="#">↗</a>	955	E of Söderhamn. Light Hällgrund extinguished. Buoyage
241(T)/2025 <a href="#">↗</a>	956, 957, 8065	Örnsköldsvik. Ullånger. Lights unlit. Buoyage

## The Quark

T&P	Charts	The Quark
247(T)/2024 <a href="#">↗</a>	48, 820, 956, 957	Vaasa. Johansson. Buoyage

## Bay of Bothnia

T&P	Charts	Bay of Bothnia
145(T)/2024 <a href="#">↗</a>	57, 846, 958, 8071	Hailuoto. Bridge construction work. Areas and borders
164(T)/2024 <a href="#">↗</a>	57, 119, 846	Oulu. Pikisaari. Fairways
3(T)/2025 <a href="#">↗</a>	57, 60, 848, 958	Off Oulu. SW of Lighthouse Oulu 1. Lost buoy. Virtual AIS. Buoyage
83(T)/2025 <a href="#">↗</a>	57, 846	Hailuoto. Boating passages at the Riutunkari and Huikku bridges.
104(T)/2025 <a href="#">↗</a>	55, 119, 838, 839	Port of Raahe. Dredging operations. Areas and borders
117(T)/2025 <a href="#">↗</a>	59, 854	Off Tornio. Maintenance of aids to navigation. Buoyage
179(T)/2025 <a href="#">↗</a>	52, 833, 834, 957, 8061	Kokkola. Lighthouse Kokkolan Majakka extinguished. Buoyage
239(T)/2025 <a href="#">↗</a>	52, 53, 833, 834, 835, 957, 8061, 8071	Kokkola. Lohtaja. Firing exercise. Areas and borders

## Vuoksi watercourse

T&P	Charts	Vuoksi watercourse
64(T)/2025 <a href="#">↗</a>	L	Lappeenranta. Muukonsaari. Buoyage
72(T)/2025 <a href="#">↗</a>	M	Varkaus. Kortesaaret. Buoyage

## Kymijoki watercourse

T&P	Charts	Kymijoki watercourse
-	-	

## Kokemäkijoki watercourse

T&P	Charts	Kokemäkijoki watercourse
-	-	

## Oulujoki watercourse

T&P	Charts	Oulujoki watercourse
-	-	

## Paatsjoki watercourse

T&P	Charts	Paatsjoki watercourse
-	-	

## Saimaa Canal

T&P	Charts	Saimaa Canal
-	-	

# Northern Baltic

<b>T&amp;P</b>	<b>Charts</b>	<b>Northern Baltic</b>
11(T)/2024 <a href="#">↗</a>	952, 953, 954	Hiiumaa. Tahkuna. Light Lehtma extinguished. Buoyage

# Announcements

<b>T&amp;P</b>	<b>Charts</b>	<b>Announcements</b>
137(T)/2023 <a href="#">↗</a>		Helsinki. Korkeasaari...Restrictions on small craft traffic
102(T)/2024 <a href="#">↗</a>		Pargas. Hessund. Bridge construction work.
231(T)/2025 <a href="#">↗</a>		Off Hanko. Off Porkkala. MARCOM Mine countermeasure exercise.