



# Notices to Mariners

## NtM 31/2025

Notices: 243 - 247 / 10.11.2025



# Table of Contents

| <b>Title</b>   | <b>Page</b> |
|--|-------------|
| Index by Area  | 2           |
| Index by Chart   | 3           |
| Gulf of Finland  | 4           |
| Archipelago Sea  | 5           |
| The Quark  | 6           |
| Vuoksi watercourse   | 7           |
| Saimaa Canal   | 8           |
| Current Preliminary (P) and Temporary (T) notices (10.11.2025) | 9           |

# Index by Area

## **Gulf of Finland**

## **Charts**

\*243/2025

14, 138, A

## **Archipelago Sea**

## **Charts**

\*244/2025

25, 37, D

## **The Quark**

## **Charts**

\*245/2025

48, 115

## **Vuoksi watercourse**

## **Charts**

\*246/2025

M

## **Saimaa Canal**

## **Charts**

\*247(T)/2025

# Index by Chart

| <b>Charts</b> | <b>Notices</b> |
|---------------|----------------|
| 14            | *243/2025      |
| 25            | *244/2025      |
| 37            | *244/2025      |
| 48            | *245/2025      |
| 115           | *245/2025      |
| 138           | *243/2025      |
| A             | *243/2025      |
| D             | *244/2025      |
| M             | *246/2025      |

# Gulf of Finland

\*243/2025

2025-11-10

Finland. Gulf of Finland. Kotka. Hietanen. Ports

| Charts       |            | Previous                   |
|--------------|------------|----------------------------|
| 14           | (INT 1246) | 230/2025 <a href="#">↗</a> |
| 138          | (INT 1155) | 14/2025 <a href="#">↗</a>  |
| A609, A609.1 |            | 230/2025 <a href="#">↗</a> |

|     |                                       |                             |
|-----|---------------------------------------|-----------------------------|
| 1   | 14, 138, A609, A609.1                 | (1) 60°29.293'N 26°56.672'E |
| Add | Quay between the following positions: | (2) 60°29.290'N 26°56.680'E |
|     |                                       | (3) 60°29.291'N 26°56.685'E |
|     |                                       | (4) 60°29.275'N 26°56.700'E |
|     |                                       | (5) 60°29.267'N 26°56.666'E |

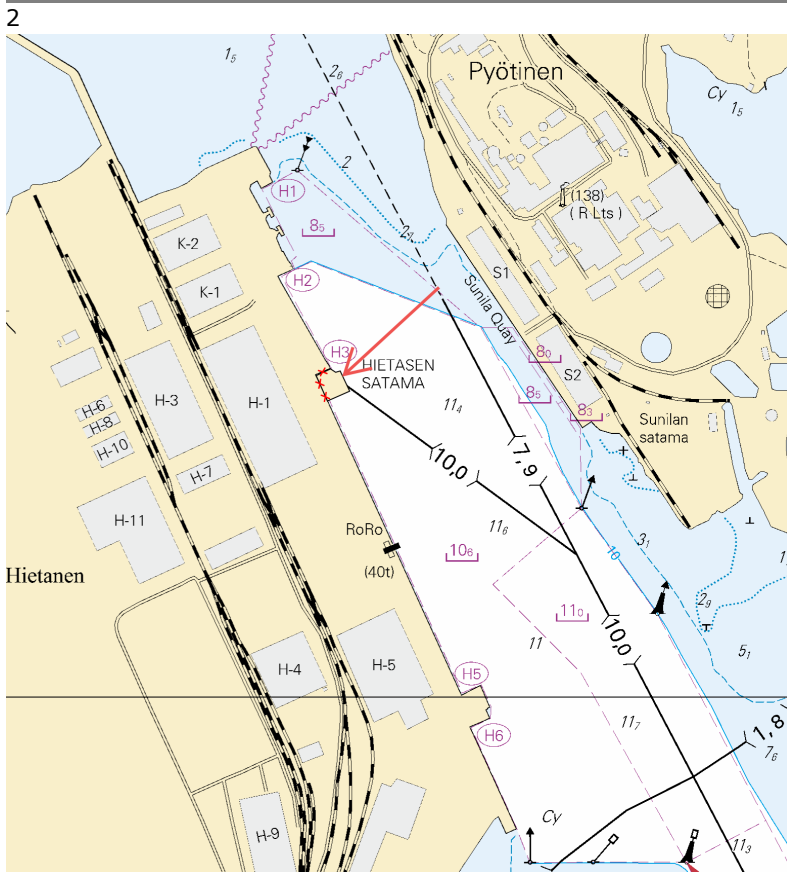


Image for reference, chart extracts not to scale of chart.

(Traficom, Helsinki/Helsingfors 2025)

# Archipelago Sea

\*244/2025

2025-11-10

Finland. Archipelago Sea. Pargas. Mattnäs holmen. Depths

| Charts                 |            | Previous                   |
|------------------------|------------|----------------------------|
| 25                     | (INT 1188) | 212/2025 <a href="#">↗</a> |
| 37                     | (INT 1198) | 212/2025 <a href="#">↗</a> |
| D708, D709, D717, D718 |            | 232/2025 <a href="#">↗</a> |

1 25, 37, D708, D709, D717, D718

Add 

60°09.21'N

21°50.21'E

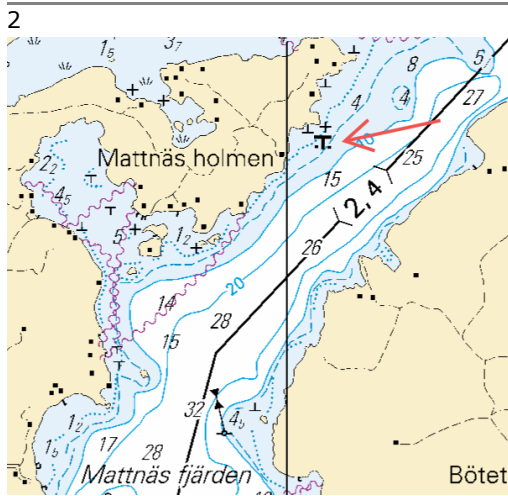


Image for reference, chart extracts not to scale of chart.

(Traficom, Helsinki/Helsingfors 2025)

# The Quark

\*245/2025

2025-11-10

Finland. The Quark. Vaasa. Vaskiluoto. Buoyage

## Charts

48

115.C

## Previous

(INT 1139)

238/2025 [↗](#)

(INT 11391)

238/2025 [↗](#)

References: 223/2025 [↗](#)

1 48, 115.C

Move



## From

63°05.287'N 21°32.953'E

## To

63°05.288'N 21°32.966'E 8467

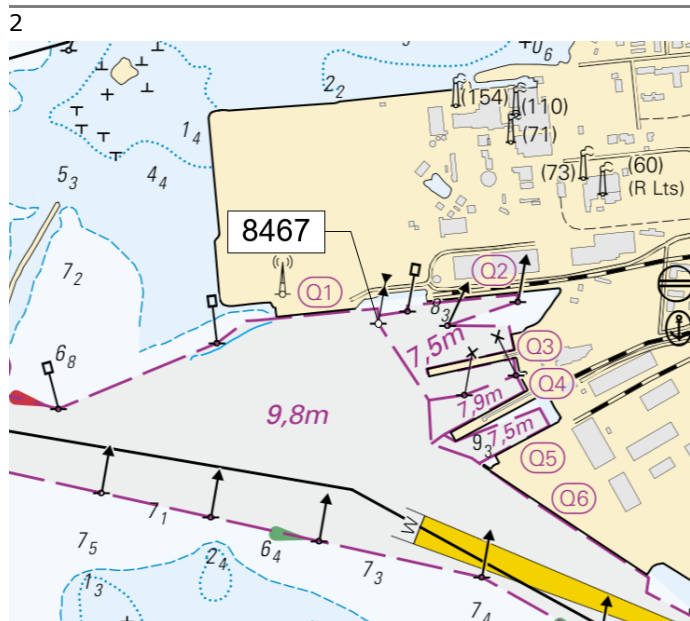


Image for reference, chart extracts not to scale of chart.

(Traficom, Helsinki/Helsingfors 2025)

# Vuoksi watercourse

\*246/2025

2025-11-10

Finland. Vuoksi watercourse. Vieremä. Lippuniemi. Cables and pipelines

## Charts

M269.A

## Previous

220/2025 [↗](#)

|        |  |                                  |     |             |             |
|--------|--|----------------------------------|-----|-------------|-------------|
| 1      |  | M269.A                           |     |             |             |
| Delete |  | Between the following positions: | (1) | 63°40.575'N | 27°08.065'E |
|        |  |                                  | (2) | 63°40.648'N | 27°08.474'E |
| 2      |  | M269.A                           |     |             |             |
| Delete |  |                                  |     | 63°40.66'N  | 27°08.56'E  |
| 3      |  | M269.A                           |     |             |             |
| Add    |  | Between the following positions: | (1) | 63°40.605'N | 27°08.160'E |
|        |  |                                  | (2) | 63°40.659'N | 27°08.410'E |

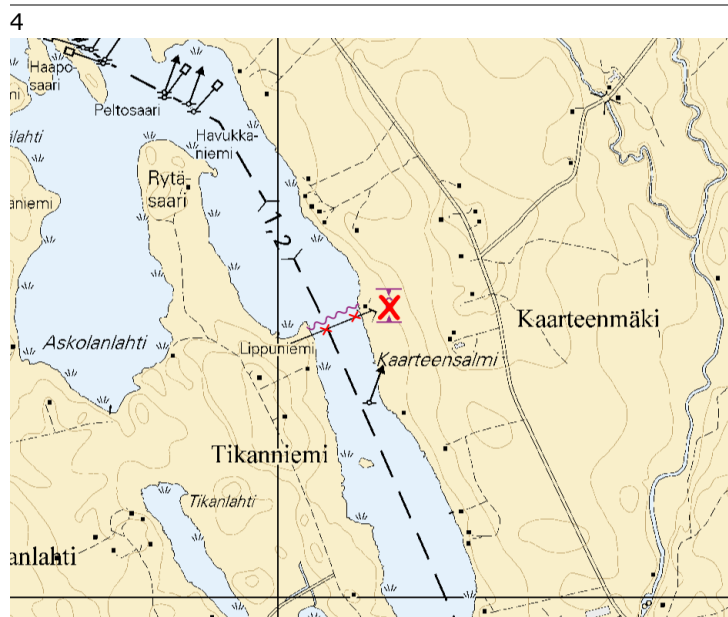


Image for reference, chart extracts not to scale of chart.

(Lisätietoja: Traficom, Helsinki/Helsingfors 2025)

# Saimaa Canal

\*247(T)/2025

2025-11-10

Finland. Saimaa Canal. Saimaa Canal closed for the winter season.

**Charts**

**Previous**

Time: Until further notice

---

1

Saimaa Canal will be closed to traffic on 14 November 2025.

(Väylävirasto/Trafikledsverket/Finnish Transport Infrastructure Agency, 2025)

---

---

# Current Preliminary (P) and Temporary (T) notices (10.11.2025)

## Gulf of Finland

| T&P                           | Charts                   | Gulf of Finland  |
|-------------------------------|--------------------------|--|
| 174(T)/2019 <a href="#">🔗</a> | 951                      | SE of Bol'soj Tjuters. Obstructions  |
| 296(T)/2020 <a href="#">🔗</a> | 17, 18, 191, 952, A, B   | Helsinki. Sipoo. Areas and borders   |
| 20(T)/2021 <a href="#">🔗</a>  | 951, A                   | TSS OFF ROOSHER ISLAND. Lighthouse Rodser extinguished. Notice repeated. Buoyage |
| 228(T)/2021 <a href="#">🔗</a> | 951, A                   | Krestovyy. Lighthouse Krestovyy extinguished. Notice repeated. Buoyage           |
| 65(T)/2022 <a href="#">🔗</a>  | A, S                     | Vyborg. Destroyed leading beacon. Notice repeated. Buoyage                       |
| 66(T)/2022 <a href="#">🔗</a>  | A, S                     | Vyborg. Light extinguished. Notice repeated. Buoyage                             |
| 86(T)/2022 <a href="#">🔗</a>  | 18, 191, 952, A, B       | Helsinki. Kruunuvuori. Restrictions on small craft traffic. Fairways             |
| 90(T)/2022 <a href="#">🔗</a>  | 951                      | Tiskolovo. Lighthouse Kajbolovo. Buoyage   |
| 230(T)/2023 <a href="#">🔗</a> | 18, 191, A, B            | Helsinki. Hernesaari. Buoyage. Areas and borders                                 |
| 194(T)/2024 <a href="#">🔗</a> | 18, 191, A, B            | Helsinki. Sompasaari. Buoyage  |
| 78(T)/2025 <a href="#">🔗</a>  | 15, 16                   | Loviisa. SE of Lighthouse Tiiskeri. ODAS spar buoy. Buoyage                      |
| 130(T)/2025 <a href="#">🔗</a> | 18, 191, A, B            | Helsinki. Hernesaari. Notice repeated. Buoyage                                   |
| 176(T)/2025 <a href="#">🔗</a> | 18, 191, A, B            | Helsinki. West Harbour...Restrictions on traffic. Areas and borders              |
| 189(T)/2025 <a href="#">🔗</a> | 952, A, B                | Paldiski. Light Pakri extinguished. Buoyage                                      |
| 211(T)/2025 <a href="#">🔗</a> | 15, 16, 101, 103, 951, A | Loviisa. Valko. Geotechnical seabed surveys. Areas and borders                   |
| 216(T)/2025 <a href="#">🔗</a> | 18, 191, A, B            | Helsinki. Sompasaari. Nihti. Areas and borders                                   |
| 228(T)/2025 <a href="#">🔗</a> | 18, 191, 192, A, B       | Helsinki. Santahamina. Areas and borders   |
| 229(T)/2025 <a href="#">🔗</a> | 17, 103, A               | Porvoo. Kilpilahti. Dredging and excavation. Areas and borders                   |

## Archipelago Sea

| T&P                           | Charts        | Archipelago Sea   |
|-------------------------------|---------------|---|
| 189(T)/2023 <a href="#">🔗</a> | 26, D         | Pargas. Kirjala...Restrictions on traffic. Areas and borders            |
| 40(T)/2024 <a href="#">🔗</a>  | 26, 190, D    | Naantali. Raumakari. Särkänsalmi. Kirkonsalmi. Notice repeated. Buoyage |
| 168(T)/2024 <a href="#">🔗</a> | 25, 26, 37, D | Pargas. Seili. ODAS buoy. Buoyage                                       |
| 267(T)/2024 <a href="#">🔗</a> | 26, 190, D    | Port of Turku. Construction works. Areas and borders                    |
| 162(T)/2025 <a href="#">🔗</a> | 24, 25, D     | Pargas. S of Nagu. Temporarily withdrawn edge marks. Buoyage            |

## Aland Sea

| T&P                           | Charts       | Aland Sea                 |
|-------------------------------|--------------|---------------------------|
| 192(T)/2025 <a href="#">↗</a> | 32, 162, 753 | Föglö. Finngrund. Buoyage |

## Bothnian Sea

| T&P                           | Charts         | Bothnian Sea  |
|-------------------------------|----------------|---|
| 6(T)/2025 <a href="#">↗</a>   | 42, 125        | Pori. Tahkoluoto. Notice repeated. Buoyage            |
| 165(T)/2025 <a href="#">↗</a> | 955            | E of Söderhamn. Light Hällgrund extinguished. Buoyage |
| 241(T)/2025 <a href="#">↗</a> | 956, 957, 8065 | Örnsköldsvik. Ullånger. Lights unlit. Buoyage         |

## The Quark

| T&P                           | Charts            | The Quark                 |
|-------------------------------|-------------------|---------------------------|
| 247(T)/2024 <a href="#">↗</a> | 48, 820, 956, 957 | Vaasa. Johansson. Buoyage |

## Bay of Bothnia

| T&P                           | Charts                                 | Bay of Bothnia   |
|-------------------------------|--|--|
| 145(T)/2024 <a href="#">↗</a> | 57, 846, 958, 8071                     | Hailuoto. Bridge construction work. Areas and borders              |
| 164(T)/2024 <a href="#">↗</a> | 57, 119, 846                           | Oulu. Pikisaari. Fairways  |
| 3(T)/2025 <a href="#">↗</a>   | 57, 60, 848, 958                       | Off Oulu. SW of Lighthouse Oulu 1. Lost buoy. Virtual AIS. Buoyage |
| 83(T)/2025 <a href="#">↗</a>  | 57, 846                                | Hailuoto. Boating passages at the Riutunkari and Huikku bridges.   |
| 104(T)/2025 <a href="#">↗</a> | 55, 119, 838, 839                      | Port of Raahe. Dredging operations. Areas and borders              |
| 117(T)/2025 <a href="#">↗</a> | 59, 854                                | Off Tornio. Maintenance of aids to navigation. Buoyage             |
| 179(T)/2025 <a href="#">↗</a> | 52, 833, 834, 957, 8061                | Kokkola. Lighthouse Kokkolan Majakka extinguished. Buoyage         |
| 239(T)/2025 <a href="#">↗</a> | 52, 53, 833, 834, 835, 957, 8061, 8071 | Kokkola. Lohtaja. Firing exercise. Areas and borders               |

## Vuoksi watercourse

| T&P                          | Charts | Vuoksi watercourse                 |
|------------------------------|--------|------------------------------------|
| 64(T)/2025 <a href="#">↗</a> | L      | Lappeenranta. Muukonsaari. Buoyage |
| 72(T)/2025 <a href="#">↗</a> | M      | Varkaus. Kortesaaret. Buoyage      |

## Kymijoki watercourse

| T&P | Charts | Kymijoki watercourse |
|-----|--------|----------------------|
| -   | -      |                      |

## Kokemäkijoki watercourse

| T&P | Charts | Kokemäkijoki watercourse |
|-----|--------|--------------------------|
| -   | -      |                          |

## Oulujoki watercourse

| T&P | Charts | Oulujoki watercourse |
|-----|--------|----------------------|
| -   | -      |                      |

## Paatsjoki watercourse

| T&P | Charts | Paatsjoki watercourse |
|-----|--------|-----------------------|
| -   | -      |                       |

## Saimaa Canal

| T&P                           | Charts | Saimaa Canal                               |
|-------------------------------|--------|--|
| 247(T)/2025 <a href="#">↗</a> |        | Saimaa Canal closed for the winter season. |

## Northern Baltic

| <b>T&amp;P</b>               | <b>Charts</b> | <b>Northern Baltic</b>                               |
|------------------------------|---------------|--|
| 11(T)/2024 <a href="#">↗</a> | 952, 953, 954 | Hiiumaa. Tahkuna. Light Lehtma extinguished. Buoyage |

## Announcements

| <b>T&amp;P</b>                | <b>Charts</b> | <b>Announcements</b>  |
|-------------------------------|---------------|---|
| 137(T)/2023 <a href="#">↗</a> |               | Helsinki. Korkeasaari...Restrictions on small craft traffic   |
| 102(T)/2024 <a href="#">↗</a> |               | Pargas. Hessund. Bridge construction work.                    |
| 231(T)/2025 <a href="#">↗</a> |               | Off Hanko. Off Porkkala. MARCOM Mine countermeasure exercise. |