



Notices to Mariners

NtM 32/2025

Notices: 248 - 260 / 20.11.2025



Table of Contents

| Title | Page |
|--|-------------|
| Index by Area | 2 |
| Index by Chart | 3 |
| Gulf of Finland | 4 |
| Archipelago Sea | 8 |
| Aland Sea | 10 |
| The Quark | 11 |
| Bay of Bothnia | 13 |
| Northern Baltic | 16 |
| Announcements | 18 |
| Current Preliminary (P) and Temporary (T) notices (20.11.2025) | 19 |

Index by Area

Gulf of Finland

Charts

| | |
|--------------|------------|
| *248/2025 | 21, B |
| *249(T)/2025 | 21, B |
| *250/2025 | 14, 138, A |

Archipelago Sea

Charts

| | |
|-----------|------------|
| *253/2025 | 26, 190, D |
|-----------|------------|

Aland Sea

Charts

| | |
|-----------|-------------------|
| *252/2025 | 32, 162, 745, 753 |
|-----------|-------------------|

The Quark

Charts

| | |
|--------------|-----------------------|
| *254(T)/2025 | 47, 48, 822, 956, 957 |
|--------------|-----------------------|

Bay of Bothnia

Charts

| | |
|--------------|-------------------------|
| *255/2025 | 52, 833, 834, 957, 8061 |
| *256/2025 | 55, 119, 838, 839 |
| *257(T)/2025 | 60, 958 |

Northern Baltic

Charts

| | |
|-------------|---------------|
| *258/2025 | 952, 953, 954 |
| 259(T)/2025 | 952, 953, 954 |

Announcements

Charts

| | |
|--------------|--|
| *251(T)/2025 | |
| *260/2025 | |

Index by Chart

| Charts | Notices |
|---------------|-------------------------|
| 14 | *250/2025 |
| 21 | *248/2025, *249(T)/2025 |
| 26 | *253/2025 |
| 32 | *252/2025 |
| 47 | *254(T)/2025 |
| 48 | *254(T)/2025 |
| 52 | *255/2025 |
| 55 | *256/2025 |
| 60 | *257(T)/2025 |
| 119 | *256/2025 |
| 138 | *250/2025 |
| 162 | *252/2025 |
| 190 | *253/2025 |
| 745 | *252/2025 |
| 753 | *252/2025 |
| 822 | *254(T)/2025 |
| 833 | *255/2025 |
| 834 | *255/2025 |
| 838 | *256/2025 |
| 839 | *256/2025 |
| 952 | *258/2025, 259(T)/2025 |
| 953 | *258/2025, 259(T)/2025 |
| 954 | *258/2025, 259(T)/2025 |
| 956 | *254(T)/2025 |
| 957 | *254(T)/2025, *255/2025 |
| 958 | *257(T)/2025 |
| 8061 | *255/2025 |
| A | *250/2025 |
| B | *248/2025, *249(T)/2025 |
| D | *253/2025 |


Gulf of Finland

*248/2025

2025-11-20

Finland. Gulf of Finland. Hanko. Koverhar. (MSL/MW). Depths. Fairway areas

| Charts | | Previous |
|--------|------------|----------------------------|
| 21 | (INT 1253) | 161/2025 ↗ |
| B635 | | 228/2025 ↗ |

| | | | | |
|-----|---|---|-----------------------------|-----------------------------|
| 1 | 21, B635 | | | |
| Add |  | Fairway area edge line between positions: | (1) 59°52.495'N 23°14.828'E | (2) 59°52.319'N 23°15.679'E |

| | | | | |
|-------|---|--|------------|------------|
| 2 | 21, B635 | | | |
| Amend |  | | 59°52.43'N | 23°15.48'E |



Image for reference, chart extracts not to scale of chart.

(Traficom, Helsinki/Helsingfors 2025)

*249(T)/2025

2025-11-20

Finland. Gulf of Finland. Raseborg. Ekenäs. (MSL/MW). Obstructions

Charts

21

(INT 1253)

Previous

248/2025 [↗](#)

B634

248/2025 [↗](#)

Time: Until futher notice

1

In the fairway area of the channel to Port of Pohjankuru have been observed the shallow which has reduced the safe clearance depth (5,5m) approx. 10 cm.

2

21, B634

Add



Obstn

59°59.467'N

23°26.550'E

3

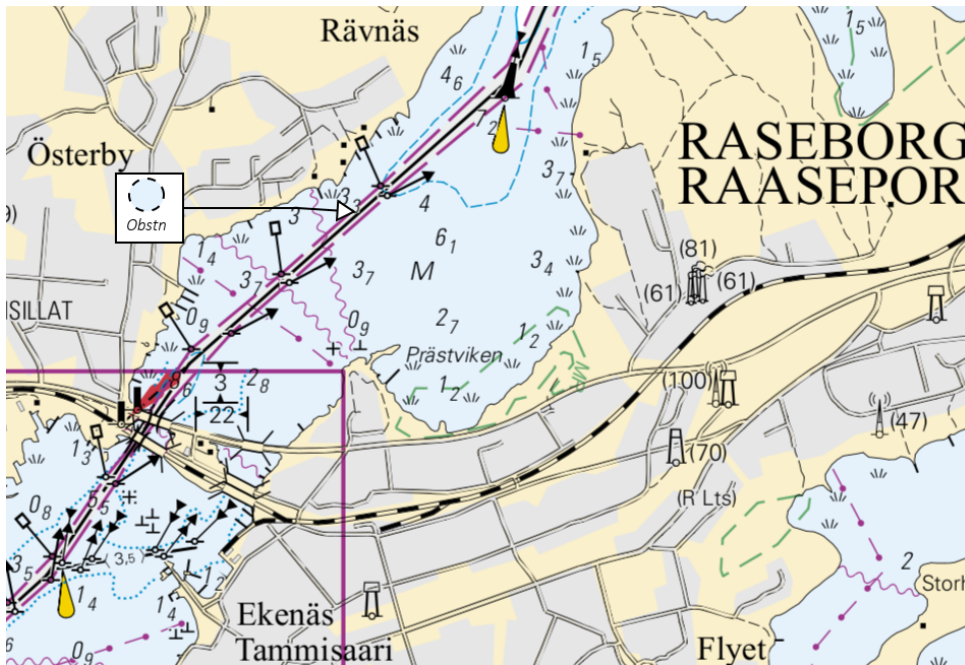


Image for reference, chart extracts not to scale of chart.

(Traficom, Helsinki/Helsingfors 2025)



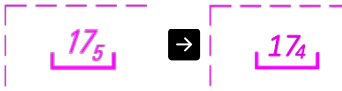


*250/2025

2025-11-20

Finland. Gulf of Finland. Kotka. Mussalo. (MSL/MW). Buoyage. Fairway areas

| Charts | | Previous |
|--------------|------------|----------------------------|
| 14 | (INT 1246) | 243/2025 ↗ |
| 138 | (INT 1155) | 243/2025 ↗ |
| A610, A610.1 | | 243/2025 ↗ |

References: [9/2020](#), [116/2020](#), [45/2023](#), [195/2024](#), [14/2025](#), [13/2025](#)

| | | | |
|-------|---|----------------------------------|---|
| 1 | 14, 138, A610, A610.1 | | |
| Add |  | Between the following positions: | (1) 60°25.457'N 26°55.559'E |
| | | Delete former edge line | (2) 60°25.326'N 26°55.402'E |
| | | | (3) 60°25.188'N 26°55.214'E |
| | | | (4) 60°25.050'N 26°54.948'E |
| 2 | 14, 138, A610, A610.1 | | |
| Move |  | | From 60°25.166'N 26°55.231'E |
| | | | To 60°25.188'N 26°55.214'E 2916 |
| 3 | 14, 138, A610 | | |
| Amend |  | | 60°25.35'N 26°55.55'E |
| 4 | A610 | | |
| Amend |  | | 60°24.90'N 26°54.74'E |
| 5 | 138, A610.1 | | |
| Amend |  | | 60°24.74'N 26°54.54'E |

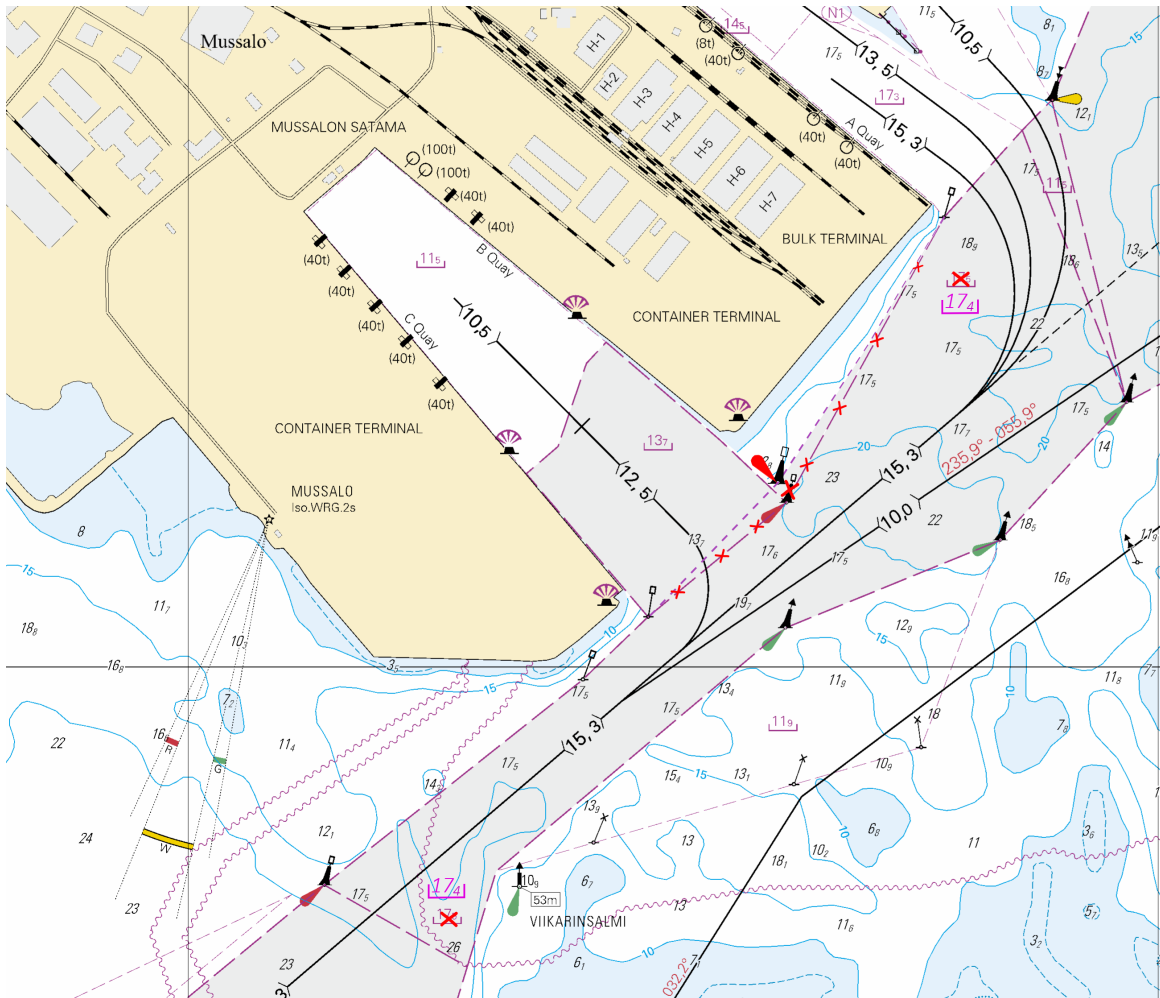


Image for reference, chart extracts not to scale of chart.

(Traficom, Helsinki/Helsingfors 2025)

Archipelago Sea





*253/2025

2025-11-20

Finland. Archipelago Sea. Turku. Port of Turku. (MSL/MW). Fairway areas

| Charts | | Previous |
|--------------|------------|----------------------------|
| 26 | (INT 1189) | 212/2025 ↗ |
| 190, 190.C | (INT 1158) | 146/2025 ↗ |
| D706, D706.2 | | 244/2025 ↗ |

Cancelled: 267(T)/2024 [↗](#)

| | | | | |
|-----|---|---|-----------------------------|--|
| 1 | 190, 190.C, D706.2 | | | |
| Add |  | Swept area edge line between positions: | (1) 60°26.610'N 22°13.031'E | |
| | | | (2) 60°26.610'N 22°13.050'E | |
| | | | (3) 60°26.615'N 22°13.050'E | |
| | | | (4) 60°26.615'N 22°13.032'E | |
| | | | (5) 60°26.610'N 22°13.031'E | |
| 2 | 190, 190.C, D706.2 | | | |
| Add |  | Swept area edge line between positions: | (1) 60°26.612'N 22°13.139'E | |
| | | | (2) 60°26.617'N 22°13.139'E | |
| | | | (3) 60°26.615'N 22°13.050'E | |
| | | | (4) 60°26.610'N 22°13.050'E | |
| | | | (5) 60°26.612'N 22°13.139'E | |
| 3 | 190, 190.C, D706.2 | | | |
| Add |  | Swept area edge line between positions: | (1) 60°26.611'N 22°13.120'E | |
| | | | (2) 60°26.356'N 22°13.137'E | |
| | | | (3) 60°26.352'N 22°13.156'E | |
| | | | (4) 60°26.612'N 22°13.139'E | |
| | | | (5) 60°26.611'N 22°13.120'E | |
| 4 | 190, 190.C, D706.2 | | | |
| Add |  | Swept area edge line between positions: | (1) 60°26.432'N 22°13.054'E | |
| | | | (2) 60°26.371'N 22°13.060'E | |
| | | | (3) 60°26.356'N 22°13.137'E | |
| | | | (4) 60°26.611'N 22°13.120'E | |
| | | | (5) 60°26.610'N 22°13.031'E | |
| | | | (6) 60°26.439'N 22°12.977'E | |
| | | | (7) 60°26.432'N 22°13.054'E | |

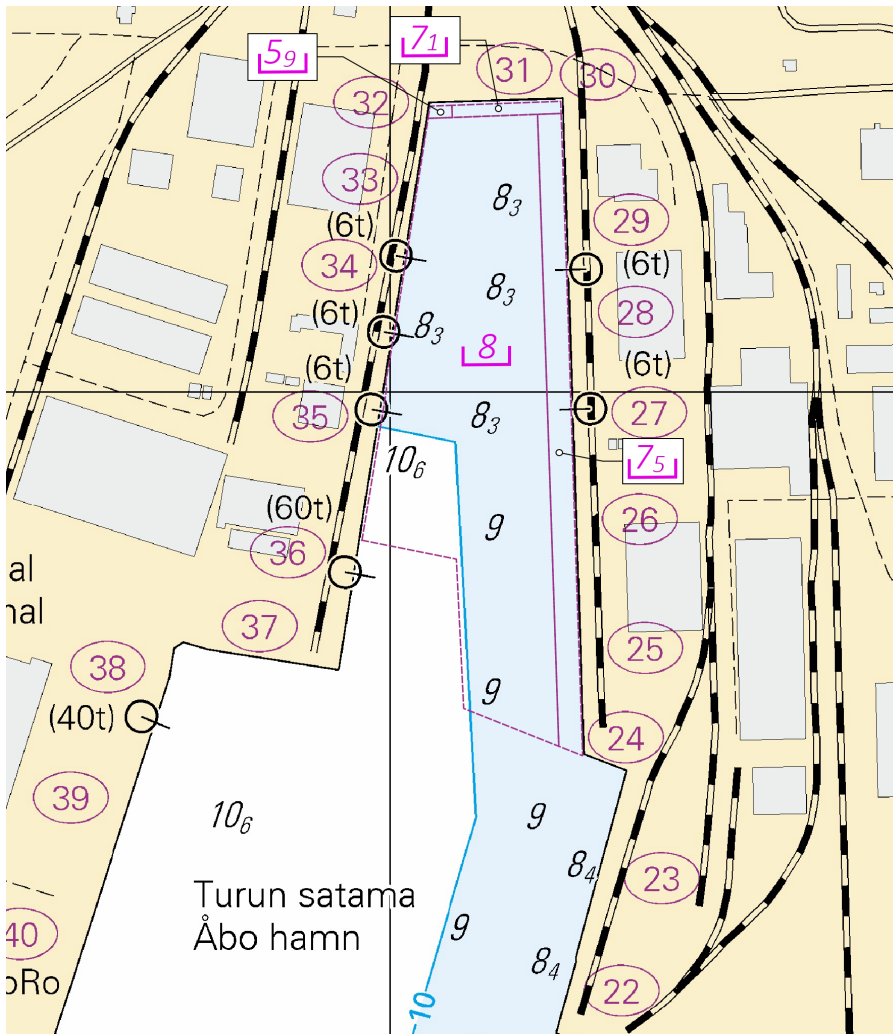


Image for reference, chart extracts not to scale of chart.

(Traficom, Helsinki/Helsingfors 2025)

Aland Sea


*252/2025

2025-11-20

Finland. Aland Sea. Föglö. Ekholm. New edge mark. Buoyage

| Charts | | Previous |
|------------|------------|----------------------------|
| 32 | (INT 1195) | 236/2025 ↗ |
| 162 | (INT 1157) | 234/2025 ↗ |
| 745, 745.A | | 154/2025 ↗ |
| 753 | | 236/2025 ↗ |

1 32, 162, 745, 745.A, 753

Add  EKHOLM 9m 60°02.120'N 20°21.321'E 89359

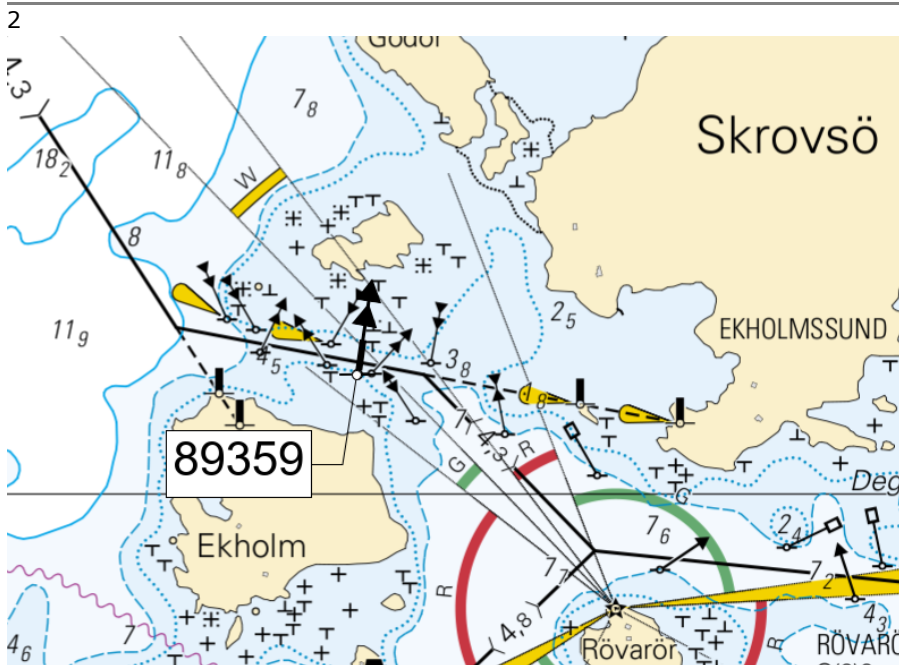


Image for reference, chart extracts not to scale of chart.

(Traficom, Helsinki/Helsingfors 2025)

The Quark













*254(T)/2025

2025-11-20

Finland. The Quark. Buoys and spar buoy temporarily withdrawn for the winter. Virtual AIS. Buoyage

| Charts | | Previous |
|--------|------------|----------------------------|
| 47 | (INT 1138) | 111/2025 ↗ |
| 48 | (INT 1139) | 245/2025 ↗ |
| 822 | | 82/2025 ↗ |
| 956 | | 241/2025 ↗ |
| 957 | (INT 1208) | 241/2025 ↗ |

Time: Until further notice

| | | | | | | |
|-------|---|---|---|------------|------------|-------|
| 1 | | 48, 822, 956, 957 | | | | |
| Amend |  |  |  V-AIS | 63°16.11'N | 20°48.08'E | 8749 |
| 2 | | 47, 822, 956, 957 | | | | |
| Amend |  |  |  V-AIS | 63°18.71'N | 20°35.74'E | 8756 |
| 3 | | 47, 956, 957 | | | | |
| Amend |  |  |  V-AIS | 63°25.20'N | 20°35.75'E | 45946 |
| 4 | | 47, 957 | | | | |
| Amend |  |  |  V-AIS | 63°27.03'N | 20°38.33'E | 53071 |

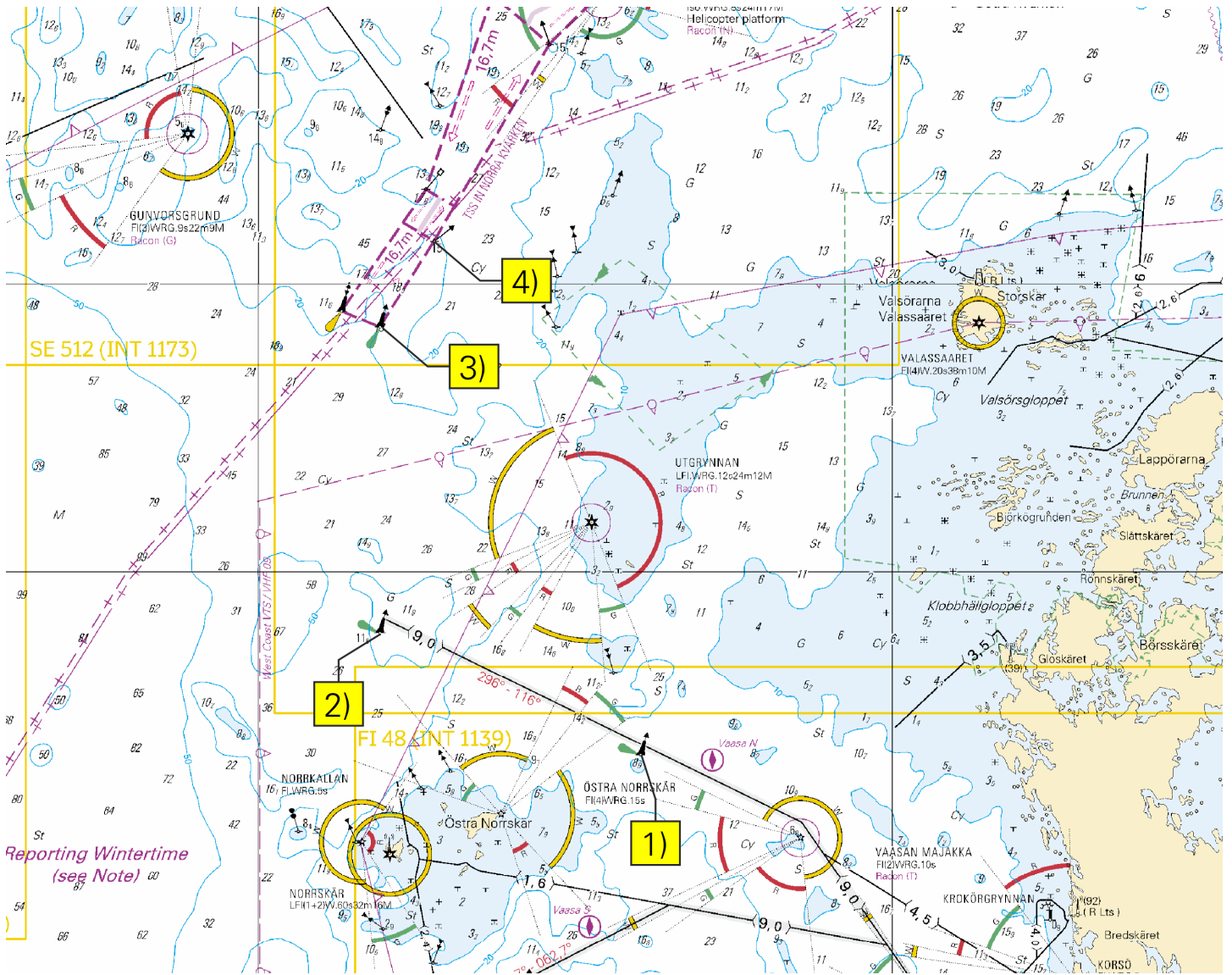


Image for reference, chart extracts not to scale of chart.

(Traficom, Helsinki/Helsingfors 2025)

Bay of Bothnia

*255/2025

2025-11-20

Finland. Bay of Bothnia. Kokkola. Lighthouse Kokkolan Majakka operational. Buoyage

| Charts | | Previous |
|------------|------------|----------------------------|
| 52 | (INT 1143) | 239/2025 ↗ |
| 833 | | 239/2025 ↗ |
| 834 | | 239/2025 ↗ |
| 957 | (INT 1208) | 254/2025 ↗ |
| 8061/INDEX | | 239/2025 ↗ |

Cancelled: 179(T)/2025 [↗](#)

| 1 | 52, 833, 834, 957, 8061/INDEX | | | | |
|-----|-------------------------------|------------------|------------|------------|---------------|
| Add | | | | | |
| | KOKKOLAN MAJAKKA | KOKKOLAN MAJAKKA | | | |
| | FI(2)WRG.10s | FI(2)WRG.10s | 63°59.82'N | 22°51.82'E | 9071, (C4203) |
| | (exting) | | | | |
| | Racon (T) | Racon (T) | | | |

(Traficom, Helsinki/Helsingfors 2025)

*256/2025

2025-11-20

Finland. Bay of Bothnia. Port of Raahе. Dredging operations completed. Areas and borders

| Charts | | Previous |
|------------|-------------|----------------------------|
| 55 | (INT 1146) | 171/2025 ↗ |
| 119.A | (INT 11461) | 171/2025 ↗ |
| 838 | | 171/2025 ↗ |
| 839, 839.A | | 171/2025 ↗ |

Cancelled: 104(T)/2025 [↗](#)

| 1 | 55, 119.A, 838, 839, 839.A | | |
|--------|----------------------------------|-----|-----------------------|
| Delete | Between the following positions: | (1) | 64°39.50'N 24°22.88'E |
| | | (2) | 64°39.84'N 24°22.88'E |
| | | (3) | 64°39.84'N 24°25.22'E |
| | | (4) | 64°39.18'N 24°25.22'E |
| | | (5) | 64°39.18'N 24°23.90'E |
| | | (6) | 64°39.50'N 24°22.88'E |

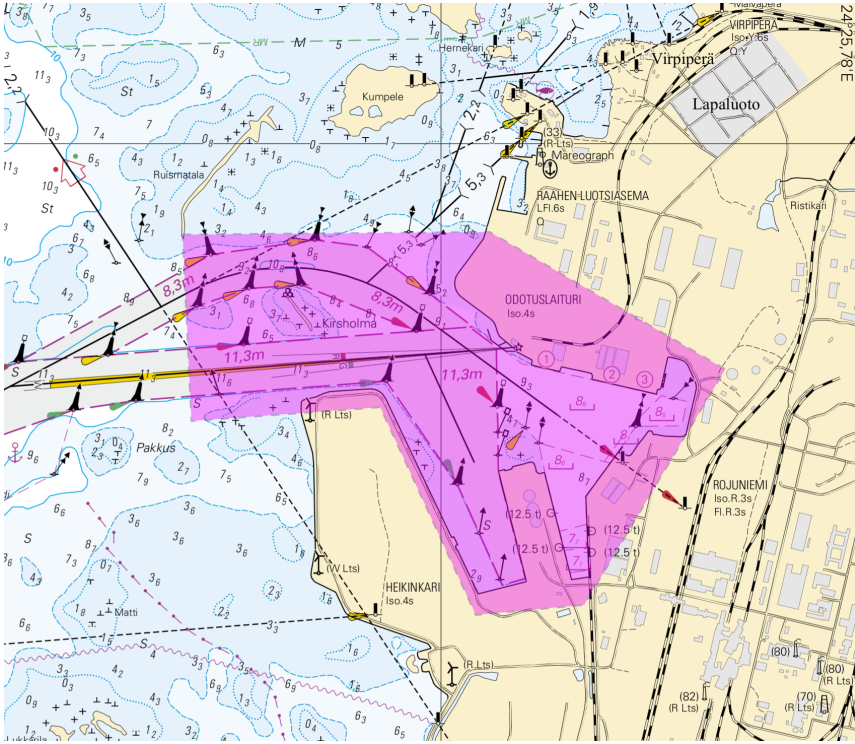


Image for reference, chart extracts not to scale of chart.

(Traficom, Helsinki/Helsingfors 2025)

*257(T)/2025

2025-11-20

Finland. Bay of Bothnia. Buoys temporarily withdrawn for the winter.
Virtual AIS. Buoyage

| Charts | | Previous |
|--------|------------|----------------------------|
| 60 | (INT 1152) | 172/2025 ↗ |
| 958 | (INT 1209) | 224/2025 ↗ |

Time: Until further notice

| | | | | | |
|-------|---------|--|-------------|-------------|-------|
| 1 | 60, 958 | | | | |
| Amend | | | 65°20.263'N | 23°57.708'E | 85067 |
| 2 | 60, 958 | | | | |
| Amend | | | 65°22.892'N | 24°03.468'E | 88395 |
| 3 | 60, 958 | | | | |
| Amend | | | 65°23.950'N | 24°05.364'E | 88398 |
| 4 | 60, 958 | | | | |
| Amend | | | 65°24.583'N | 24°08.687'E | 88399 |

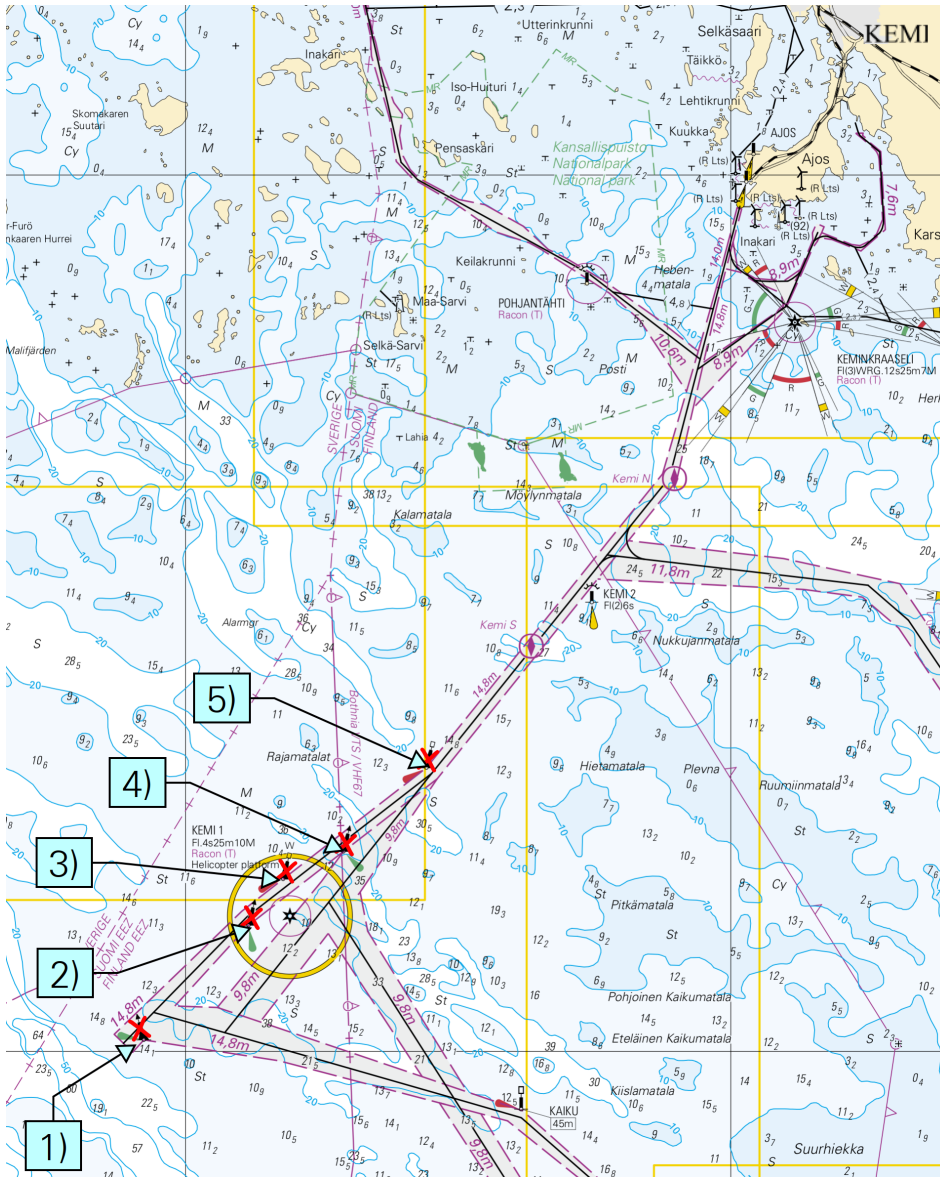


Image for reference, chart extracts not to scale of chart.

(Traficom, Helsinki/Helsingfors 2025)

Northern Baltic

*258/2025

2025-11-20

Estonia. Northern Baltic. Hiiumaa. Tahkuna poolsaar. Obstructions

| Charts | Previous |
|----------------|----------------------------|
| 952 | 217/2025 ↗ |
| 953 | 242/2025 ↗ |
| 954 (INT 1210) | 242/2025 ↗ |

| | | | | |
|-------|--|---------------|------------|------------|
| 1 | | 952, 953, 954 | | |
| Add | (3 _g)  | | 59°06.55'N | 22°39.68'E |
| <hr/> | | | | |
| 2 | | 952, 953, 954 | | |
| Add | (4 ₇)  | | 59°07.10'N | 22°39.55'E |
| <hr/> | | | | |
| 3 | | 952, 953, 954 | | |
| Add | (5)  | | 59°05.77'N | 22°41.42'E |
| <hr/> | | | | |
| 4 | | 952, 953, 954 | | |
| Add | (4 ₆)  | | 59°06.61'N | 22°41.30'E |

(NtM 10/168, Tallinn 2025)

259(T)/2025

2025-11-20

Estonia. Northern Baltic. Hiiumaa. Lehtma. Withdrawn pilot boarding place.
Pilotage

| Charts | | Previous |
|--------|------------|----------------------------|
| 952 | | 258/2025 ↗ |
| 953 | | 258/2025 ↗ |
| 954 | (INT 1210) | 258/2025 ↗ |

Time: Until further notice

| | | | |
|--------|---|-----------|-----------|
| 1 | 952, 953, 954 | | |
| Delete |  LEHTMA | 59°05.5'N | 22°44.0'E |

(NtM 11/183(T), Tallinn 2025)

Announcements

*251(T)/2025

2025-11-20

Finland. Gulf of Finland. Archipelago Sea. Naval exercise Freezing Winds 25.

[Charts](#)

[Previous](#)

Time: 24 November - 4 December 2025

1

The international naval exercise Freezing Winds 25 will be conducted during weeks 48 and 49

1. In the Archipelago Sea, between Utö and Nauvo, and
2. In the Gulf of Finland, off Kemiönsaari and Hanko.

The exercise will primarily take place outside fairway areas. Vessels participating in the exercise may operate in ways that deviate from normal traffic patterns. Other vessels are requested to avoid navigating in the vicinity of the units.

(Puolustusvoimat/Försvarsmakten/The Finnish Defence Forces 2025)

*260/2025

2025-11-20

Finland. Finnish Winter navigation 2025-2026 publication.

[Charts](#)

[Previous](#)

1

The Finnish Transport Infrastructure Agency has updated its publication Finland's Winter Navigation 2025–2026.

This icebreaking season, all vessels arriving for the first time of the winter season to a Finnish or Swedish assistance area will be asked, in English, whether they accept and agree to follow the general instructions for icebreaking issued by the national maritime authorities.

The vessel or shipping company is advised to give its reply before the vessel arrives to the assistance area by e-mail to Turku Radio (turku.radio@fintraffic.fi). The answer will affect the assistance of the vessel.

Brokers are asked to ensure that the publication Finland's Winter Navigation 2025–2026 has been delivered to all vessels/shipping companies before the vessels arrive to the assistance area. Shipping companies should take the instructions into account already when drawing up charter parties.

The guide is mainly intended for deck officers and it is a maritime publication compliant with SOLAS regulations and with the provisions relating to route planning and the safe passage of the vessel under the Maritime Act. It also includes information and instructions about the special conditions in the Baltic Sea, as well as useful information for charterers and all parties working towards smooth and particularly safe winter navigation.

In order to ensure a safe and smooth flow of traffic in the entire winter navigation system, it is vital that your vessel meets the requirements and that the crew follows the instructions in Finland's Winter Navigation 2025–2026.

Winter navigation is teamwork.

Finnish Transport Infrastructure Agency, Maritime Unit

(Väylävirasto/Trafikledsverket/Finnish Transport Infrastructure Agency, 2025)

Current Preliminary (P) and Temporary (T) notices (20.11.2025)

Gulf of Finland

| T&P | Charts | Gulf of Finland |
|-------------------------------|--------------------------|--|
| 174(T)/2019 ↗ | 951 | SE of Bol'soj Tjuters. Obstructions |
| 296(T)/2020 ↗ | 17, 18, 191, 952, A, B | Helsinki. Sipoo. Areas and borders |
| 20(T)/2021 ↗ | 951, A | TSS OFF ROOSHER ISLAND. Lighthouse Rodser extinguished. Notice repeated. Buoyage |
| 228(T)/2021 ↗ | 951, A | Krestovyy. Lighthouse Krestovyy extinguished. Notice repeated. Buoyage |
| 65(T)/2022 ↗ | A, S | Vyborg. Destroyed leading beacon. Notice repeated. Buoyage |
| 66(T)/2022 ↗ | A, S | Vyborg. Light extinguished. Notice repeated. Buoyage |
| 86(T)/2022 ↗ | 18, 191, 952, A, B | Helsinki. Kruunuvuori. Restrictions on small craft traffic. Fairways |
| 90(T)/2022 ↗ | 951 | Tiskolovo. Lighthouse Kajbolovo. Buoyage |
| 230(T)/2023 ↗ | 18, 191, A, B | Helsinki. Hernesaari. Buoyage. Areas and borders |
| 194(T)/2024 ↗ | 18, 191, A, B | Helsinki. Sompasaari. Buoyage |
| 78(T)/2025 ↗ | 15, 16 | Loviisa. SE of Lighthouse Tiiskeri. ODAS spar buoy. Buoyage |
| 130(T)/2025 ↗ | 18, 191, A, B | Helsinki. Hernesaari. Notice repeated. Buoyage |
| 176(T)/2025 ↗ | 18, 191, A, B | Helsinki. West Harbour...Restrictions on traffic. Areas and borders |
| 189(T)/2025 ↗ | 952, A, B | Paldiski. Light Pakri extinguished. Buoyage |
| 211(T)/2025 ↗ | 15, 16, 101, 103, 951, A | Loviisa. Valko. Geotechnical seabed surveys. Areas and borders |
| 216(T)/2025 ↗ | 18, 191, A, B | Helsinki. Sompasaari. Nihti. Areas and borders |
| 228(T)/2025 ↗ | 18, 191, 192, A, B | Helsinki. Santahamina. Areas and borders |
| 229(T)/2025 ↗ | 17, 103, A | Porvoo. Kilpilahti. Dredging and excavation. Areas and borders |
| 249(T)/2025 ↗ | 21, B | Raseborg. Ekenäs. (MSL/MW). Obstructions |

Archipelago Sea

| T&P | Charts | Archipelago Sea |
|-------------------------------|---------------|---|
| 189(T)/2023 ↗ | 26, D | Pargas. Kirjala...Restrictions on traffic. Areas and borders |
| 40(T)/2024 ↗ | 26, 190, D | Naantali. Raumakari. Särkänsalmi. Kirkonsalmi. Notice repeated. Buoyage |
| 168(T)/2024 ↗ | 25, 26, 37, D | Pargas. Seili. ODAS buoy. Buoyage |
| 162(T)/2025 ↗ | 24, 25, D | Pargas. S of Nagu. Temporarily withdrawn edge marks. Buoyage |

Aland Sea

| T&P | Charts | Aland Sea |
|-------------------------------|--------------|---------------------------|
| 192(T)/2025 ↗ | 32, 162, 753 | Föglö. Finngrund. Buoyage |

Bothnian Sea

| T&P | Charts | Bothnian Sea |
|-------------------------------|----------------|---|
| 6(T)/2025 ↗ | 42, 125 | Pori. Tahkoluoto. Notice repeated. Buoyage |
| 165(T)/2025 ↗ | 955 | E of Söderhamn. Light Hällgrund extinguished. Buoyage |
| 241(T)/2025 ↗ | 956, 957, 8065 | Örnsköldsvik. Ullånger. Lights unlit. Buoyage |

The Quark

| T&P | Charts | The Quark |
|-------------------------------|-----------------------|--|
| 247(T)/2024 ↗ | 48, 820, 956, 957 | Vaasa. Johansson. Buoyage |
| 254(T)/2025 ↗ | 47, 48, 822, 956, 957 | Buoys and spar buoy temporarily withdrawn for the winter. Virtual AIS. Buoyage |

Bay of Bothnia

| T&P | Charts | Bay of Bothnia |
|-------------------------------|--------------------|--|
| 145(T)/2024 ↗ | 57, 846, 958, 8071 | Hailuoto. Bridge construction work. Areas and borders |
| 164(T)/2024 ↗ | 57, 119, 846 | Oulu. Pikisaari. Fairways |
| 3(T)/2025 ↗ | 57, 60, 848, 958 | Off Oulu. SW of Lighthouse Oulu 1. Lost buoy. Virtual AIS. Buoyage |
| 83(T)/2025 ↗ | 57, 846 | Hailuoto. Boating passages at the Riutunkari and Huikku bridges. |
| 117(T)/2025 ↗ | 59, 854 | Off Tornio. Maintenance of aids to navigation. Buoyage |
| 257(T)/2025 ↗ | 60, 958 | Buoys temporarily withdrawn for the winter. Virtual AIS. Buoyage |

Vuoksi watercourse

| T&P | Charts | Vuoksi watercourse |
|------------------------------|--------|------------------------------------|
| 64(T)/2025 ↗ | L | Lappeenranta. Muukonsaari. Buoyage |
| 72(T)/2025 ↗ | M | Varkaus. Kortesaaret. Buoyage |

Kymijoki watercourse

| T&P | Charts | Kymijoki watercourse |
|-----|--------|----------------------|
| - | - | |

Kokemäkijoki watercourse

| T&P | Charts | Kokemäkijoki watercourse |
|-----|--------|--------------------------|
| - | - | |

Oulujoki watercourse

| T&P | Charts | Oulujoki watercourse |
|-----|--------|----------------------|
| - | - | |

Paatsjoki watercourse

| T&P | Charts | Paatsjoki watercourse |
|-----|--------|-----------------------|
| - | - | |

Saimaa Canal

| T&P | Charts | Saimaa Canal |
|-------------------------------|--------|--|
| 247(T)/2025 ↗ | | Saimaa Canal closed for the winter season. |

Northern Baltic

| T&P | Charts | Northern Baltic |
|-------------------------------|---------------|---|
| 11(T)/2024 ↗ | 952, 953, 954 | Hiiumaa. Tahkuna. Light Lehtma extinguished. Buoyage |
| 259(T)/2025 ↗ | 952, 953, 954 | Hiiumaa. Lehtma. Withdrawn pilot boarding place. Pilotage |

Announcements

| T&P | Charts | Announcements |
|-------------------------------|--------|---|
| 137(T)/2023 ↗ | | Helsinki. Korkeasaari...Restrictions on small craft traffic |
| 102(T)/2024 ↗ | | Pargas. Hessund. Bridge construction work. |
| 251(T)/2025 ↗ | | Archipelago Sea. Naval exercise Freezing Winds 25. |