



Notices to Mariners

NtM 33/2025

Notices: 261 - 270 / 30.11.2025



Table of Contents

Title	Page
Index by Area	2
Index by Chart	3
Archipelago Sea	4
The Quark	8
Bay of Bothnia	10
Vuoksi watercourse	13
Kymijoki watercourse	15
Announcements	16
Current Preliminary (P) and Temporary (T) notices (28.11.2025)	17

Index by Area

Archipelago Sea

Charts

*261(T)/2025	26, 190, D
*262/2025	24, 25, 37, 952, 953, 954, D
*263/2025	24, 25, D

The Quark

Charts

264(T)/2025	47, 825, 956, 957, 8061, 8065
-------------	-------------------------------

Bay of Bothnia

Charts

*265/2025	117, 836
*266(T)/2025	57, 846

Vuoksi watercourse

Charts

*267/2025	200
*268/2025	M

Kymijoki watercourse

Charts

*269/2025	K
-----------	---

Announcements

Charts

*270/2025	
-----------	--

Index by Chart

Charts	Notices
24	*262/2025, *263/2025
25	*262/2025, *263/2025
26	*261(T)/2025
37	*262/2025
47	264(T)/2025
57	*266(T)/2025
117	*265/2025
190	*261(T)/2025
200	*267/2025
825	264(T)/2025
836	*265/2025
846	*266(T)/2025
952	*262/2025
953	*262/2025
954	*262/2025
956	264(T)/2025
957	264(T)/2025
8061	264(T)/2025
8065	264(T)/2025
D	*261(T)/2025, *262/2025, *263/2025
K	*269/2025
M	*268/2025

Archipelago Sea

*261(T)/2025

2025-11-28

Finland. Archipelago Sea. Port of Turku. Construction works. Notice repeated. Areas and borders

Charts		Previous
26	(INT 1189)	253/2025 ↗
190, 190.C	(INT 1158)	253/2025 ↗
D706, D706.2		253/2025 ↗

Time: to approx. 30 June 2026

References: [267\(T\)/2024 ↗](#)

1

Construction work in progress in the area marked in the chartlet. Vessels navigating in the area are advised to reduce their speed and avoid creating wash in the vicinity of the work vessels. Work teams monitor VHF channel 71.

Tug boat SPARK, MMSI: 230983050, Call sign OG9923.

2

26, 190, 190.C, D706, D706.2

Add



Between the following positions:

- (1) 60°26.35'N 22°13.15'E
- (2) 60°26.23'N 22°13.07'E
- (3) 60°26.17'N 22°12.96'E
- (4) 60°26.15'N 22°12.99'E
- (5) 60°26.19'N 22°13.13'E
- (6) 60°26.36'N 22°13.20'E

Construction works

3

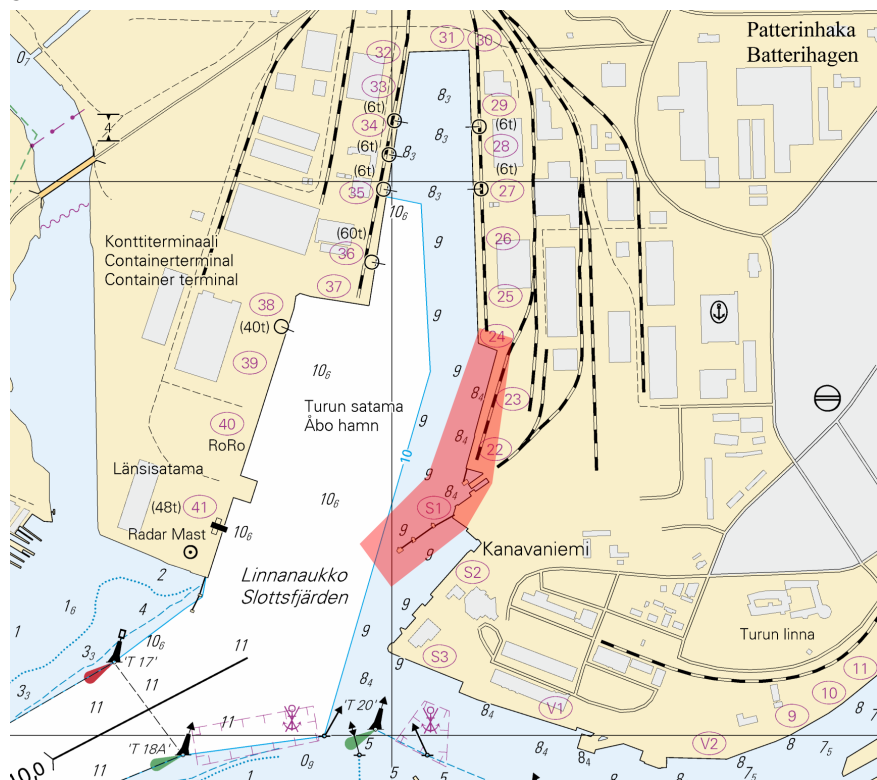


Image for reference, chart extracts not to scale of chart.

(Traficom, Helsinki/Helsingfors 2025)


*262/2025

2025-11-28

Finland. Archipelago Sea. Pargas. Nötö. Berghamn. Fairways

Charts		Previous
24	(INT 1187)	207/2025 ↗
25	(INT 1188)	244/2025 ↗
37	(INT 1198)	244/2025 ↗
952		259/2025 ↗
953		259/2025 ↗
954	(INT 1210)	259/2025 ↗
D711, D716, D716.2, D717, D717.2, D/Utö - Turku		261/2025 ↗

References:141/2024 [↗](#)

1	24, 25, 952, 953, 954, D711, D716, D716.2, D/Utö - Turku		
Amend		Between the following positions:	(1) 59°57.082'N 21°44.832'E
			(2) 59°59.138'N 21°44.334'E

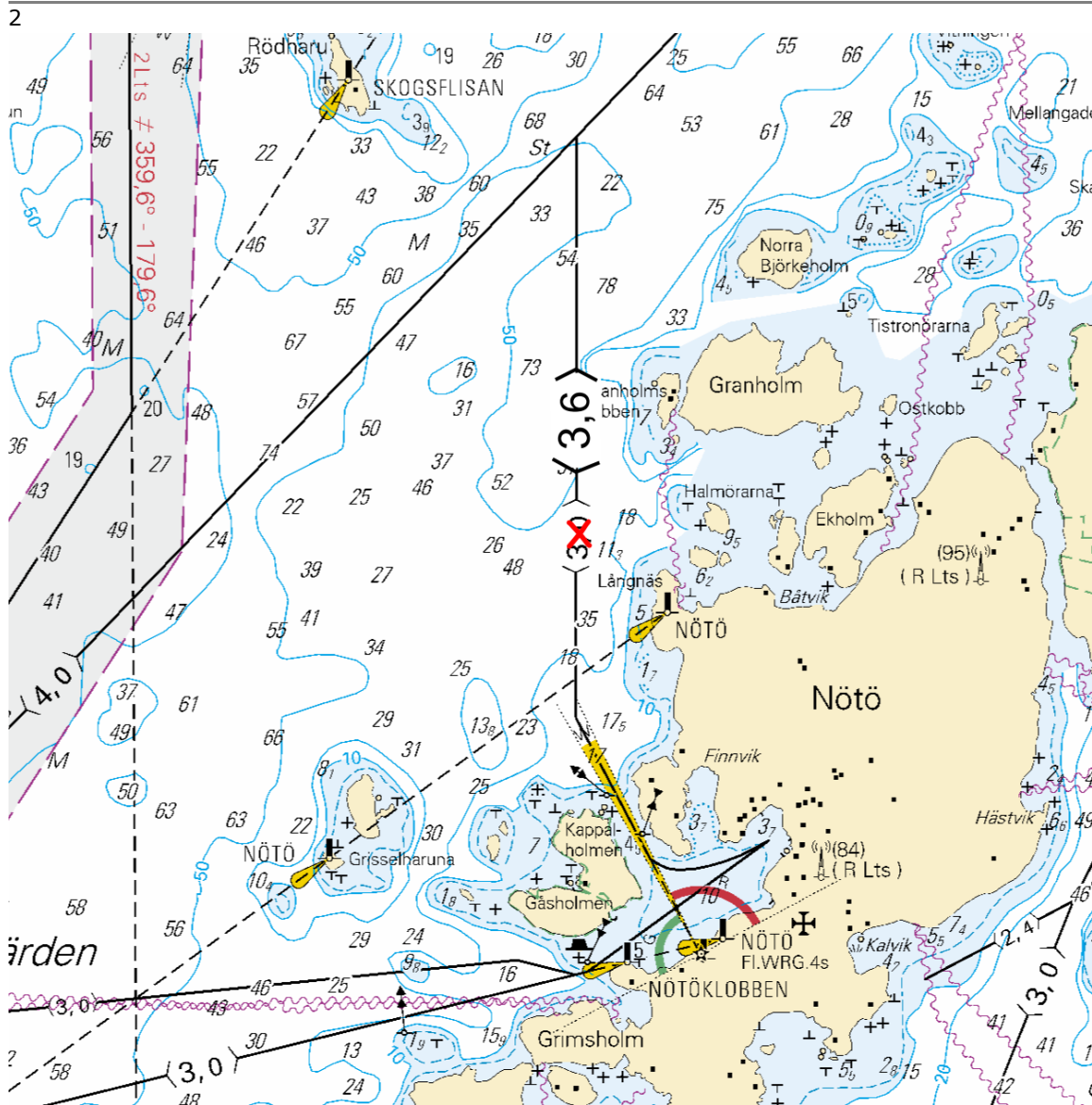


Image for reference, chart extracts not to scale of chart.

Amend $\langle 4,0 \rangle \rightarrow \langle 3,6 \rangle$ Between the following positions:

- (1) 60°03.244'N 21°48.167'E
- (2) 60°03.783'N 21°46.732'E

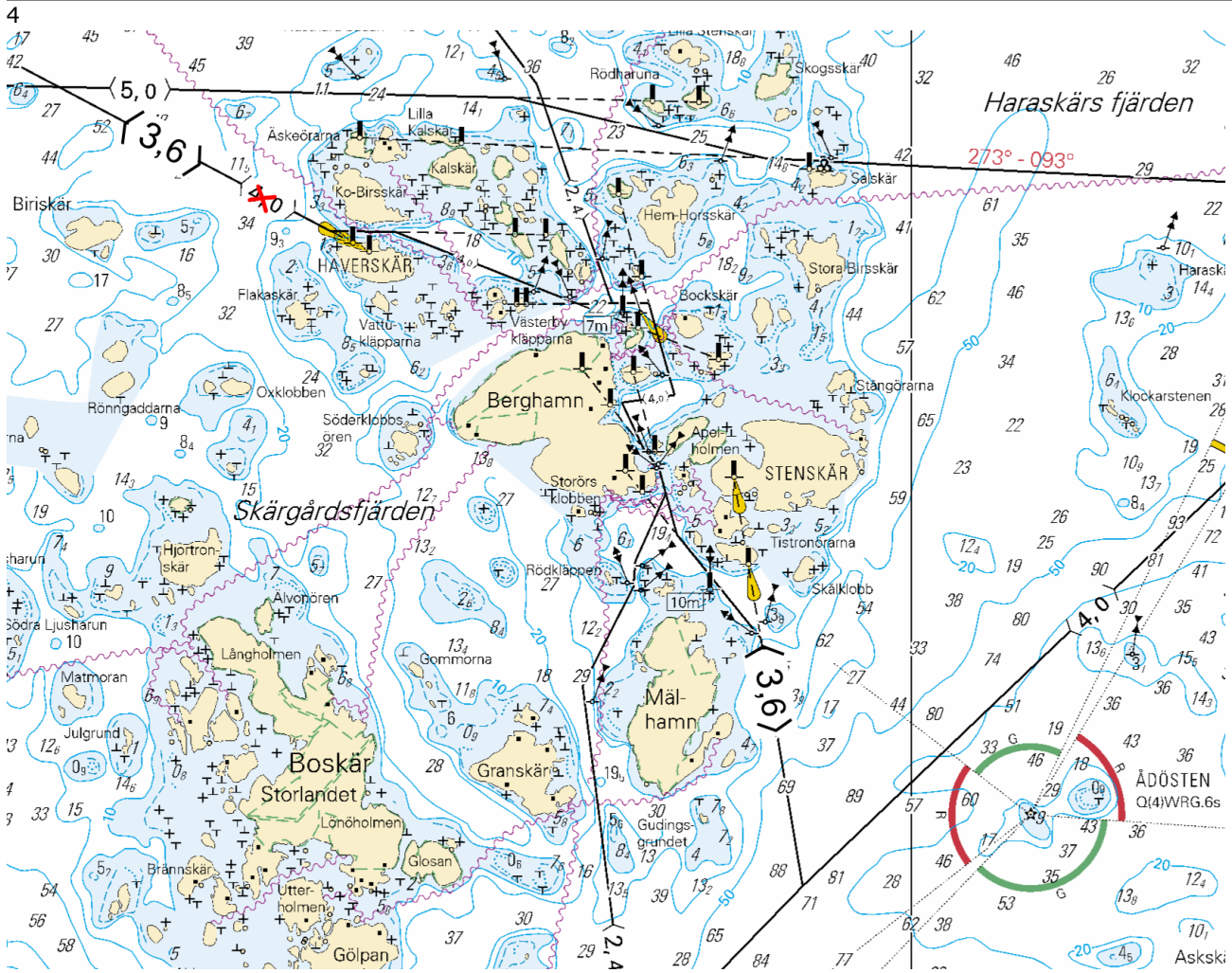


Image for reference, chart extracts not to scale of chart.

(Traficom, Helsinki/Helsingfors 2025)

*263/2025

2025-11-28





Finland. Archipelago Sea. Pargas. S of Nagu. Temporarily withdrawn edge marks reinstated. Buoyage

Charts		Previous
24	(INT 1187)	262/2025 ↗
25	(INT 1188)	262/2025 ↗
D709, D710, D711, D715, D716, D717, D717.2		262/2025 ↗

Cancelled: 162(T)/2025 [↗](#)

1

The edge marks have been restored to their place. The spar buoys installed next to the edge marks during the repair work has been withdrawn.

2	24, D715, D716			
Add	 UTTERHARUN 35m	59°55.210'N	21°39.678'E	21776
3	24, D710, D711			
Add	 STYRHOLMARNAN 35m	59°56.346'N	21°53.014'E	21773
4	24, 25, D711, D716			
Add	 NÖTÖ - MJOÖ 50m	59°57.459'N	21°47.619'E	21768
5	25, D709, D716, D717, D717.2			
Add	 10m	60°02.650'N	21°48.723'E	21712

(Traficom, Helsinki/Helsingfors 2025)

The Quark

264(T)/2025

2025-11-28

Sweden. The Quark. TSS IN NORRA KVARKEN. Buoys and spar buoys temporarily withdrawn for the winter. Buoyage

Charts		Previous
47	(INT 1138)	254/2025 ↗
825		111/2025 ↗
956		254/2025 ↗
957	(INT 1208)	255/2025 ↗
8061/INDEX		255/2025 ↗
8065/Vaasa - Uumaja		241/2025 ↗

Time: Until further notice

1		47, 956, 957, 8061/INDEX, 8065/Vaasa - Uumaja		
Amend			63°25.53'N	20°33.93'E
2		47, 957, 8061/INDEX, 8065/Vaasa - Uumaja		
Amend			63°28.129'N	20°37.926'E
3		47, 957, 8061/INDEX, 8065/Vaasa - Uumaja		
Amend			63°32.240'N	20°41.088'E
4		47, 825, 957, 8061/INDEX, 8065/Vaasa - Uumaja		
Amend			63°31.182'N	20°43.770'E
5		47, 825, 957, 8061/INDEX, 8065/Vaasa - Uumaja		
Amend			63°32.708'N	20°45.376'E
6		47, 825, 957, 8061/INDEX, 8065/Vaasa - Uumaja		
Amend			63°32.288'N	20°46.247'E
7		47, 825, 957, 8061/INDEX, 8065/Vaasa - Uumaja		
Amend			63°32.89'N	20°51.03'E

8

47, 825, 957, 8061/INDEX, 8065/Vaasa - Uumaja

Amend



V-AIS

63°33.499'N

20°52.351'E

9

47, 825, 957, 8061/INDEX, 8065/Vaasa - Uumaja

Amend



V-AIS

63°35.403'N

21°03.326'E

(Ufs 1095/19754(T), Norrköping 2025)

Bay of Bothnia

*265/2025

2025-11-28

Finland. Bay of Bothnia. Kalajoki. Konikarvo. Obstructions. Depths

Charts

117.B

(INT 11431)

Previous

149/2025 [↗](#)

836.A

149/2025 [↗](#)

1 117.B, 836.A

Move

From

64°12.977'N 23°40.331'E

To

64°12.975'N 23°40.390'E

2 117.B, 836.A

Amend $\frac{0_8}{T}$  $\frac{T}{T}$

64°13.05'N 23°40.567'E

3 117.B, 836.A

Add $\frac{1_6}{T}$

64°13.052'N 23°40.220'E

4 117.B, 836.A

Add $\frac{1_7}{T}$

64°13.005'N 23°40.262'E

5 117.B, 836.A

Add $\frac{2_1}{T}$

64°13.022'N 23°40.486'E

6 117.B, 836.A

Add $\frac{2}{T}$

64°13.00'N 23°39.947'E

7 117.B, 836.A

Add $\frac{2_4}{T}$

64°12.973'N 23°40.302'E

8 117.B, 836.A

Add $\frac{1}{T}$

64°13.122'N 23°40.693'E

9 Add  117.B, 836.A 64°13.098'N 23°40.494'E

10 Add 
Obstn 117.B, 836.A 64°13.124'N 23°41.065'E

11 Add 
Obstn 117.B, 836.A 64°12.973'N 23°39.865'E

(Traficom, Helsinki/Helsingfors 2025)

*266(T)/2025

2025-11-28

Finland. Bay of Bothnia. Hailuoto. Boating passages at the Huikku bridge.
Areas and borders

Charts

57

846

(INT 1148)

Previous

224/2025 

224/2025 

Time: to approx. 30 April 2026

1
The navigational passage under the Huikku work bridge will be closed for the duration of the winter time.

2 Add  57, 846
Traffic restrictions 65°02.2'N 25°05.8'E

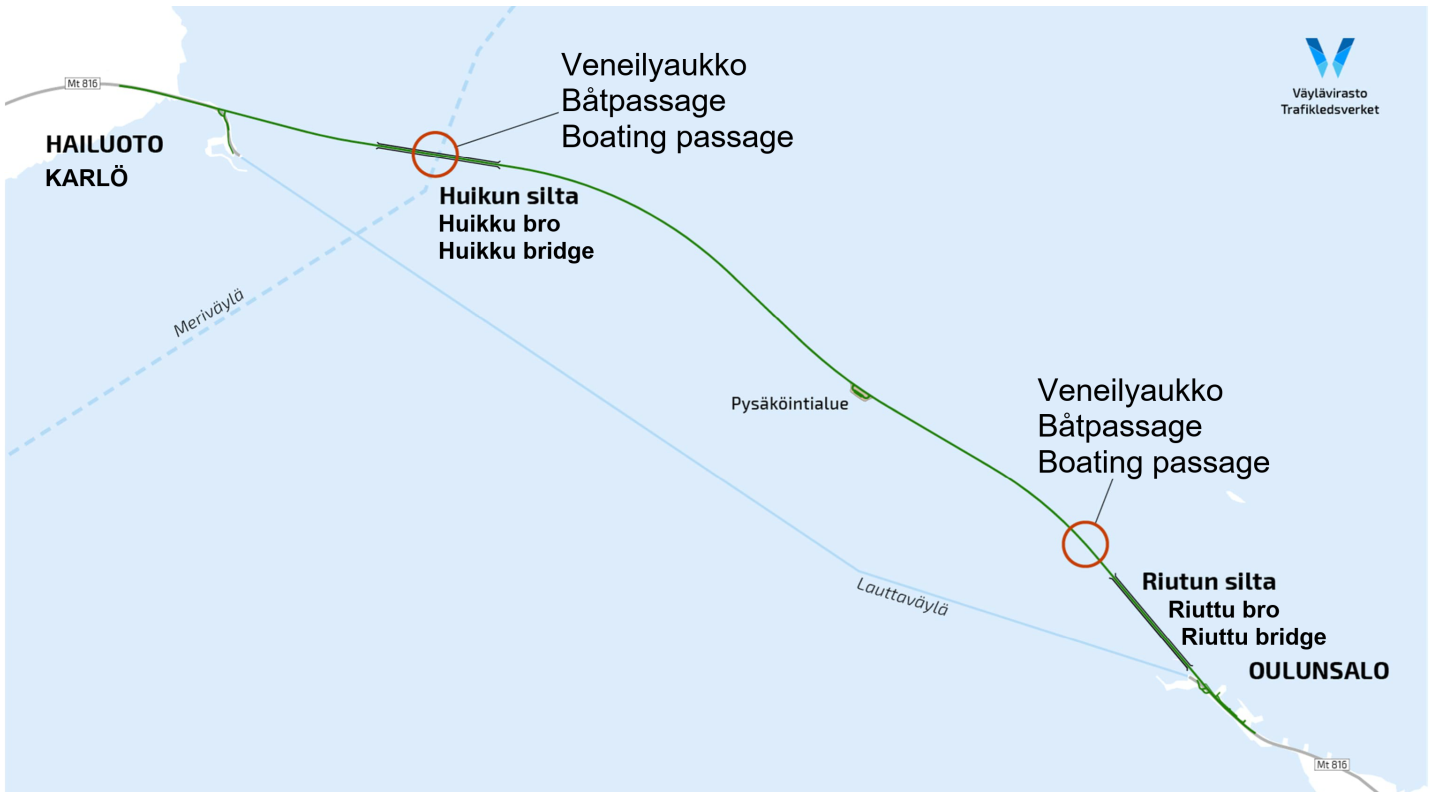


Image for reference, chart extracts not to scale of chart.

(Väylävirasto/Trafikledsverket/Finnish Transport Infrastructure Agency, 2025)

Vuoksi watercourse

*267/2025

2025-11-28

Finland. Vuoksi watercourse. Lappeenranta. Heposalo. Depths

Charts

200

Previous

218/2025 [↗](#)

1 200

Add



61°06.479'N

28°04.096'E



Image for reference, chart extracts not to scale of chart.

(Traficom, Helsinki/Helsingfors 2025)

*268/2025

2025-11-28

Finland. Vuoksi watercourse. Varkaus. Muuraissaari. Obstructions. Depths

Charts

M230, M230.1, M230.2

Previous

246/2025 [↗](#)

References:183/2025 [↗](#)

1 M230, M230.1, M230.2

Amend

48

Obstn



29

Obstn

62°18.758'N

27°54.741'E

2 M230, M230.1, M230.2

Add

2

Obstn

62°18.790'N

27°54.902'E

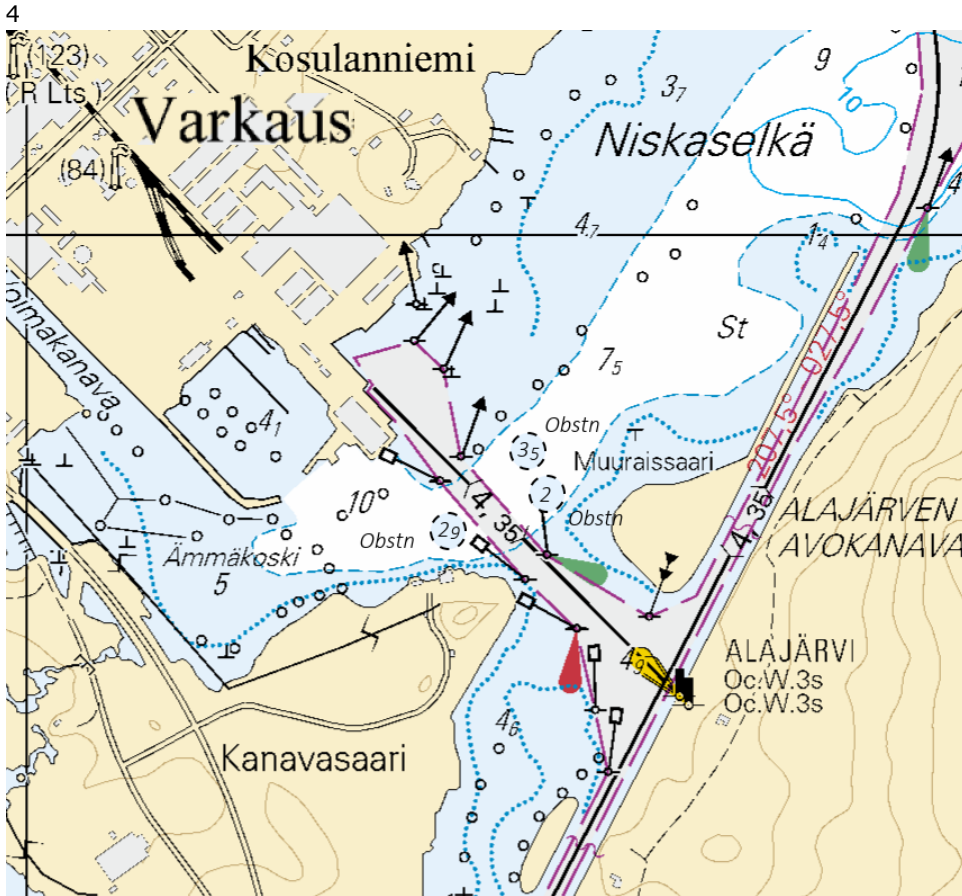


Image for reference, chart extracts not to scale of chart.

(Traficom, Helsinki/Helsingfors 2025)

Kymijoki watercourse

*269/2025

2025-11-28

Finland. Kymijoki watercourse. Äänekoski. Piilolanniemi. Cultural Features

Charts


K330, K331

Previous

194/2025 [↗](#)

1

K330, K331

Add 

Between the following positions:

(1) 62°35.545'N 25°44.228'E

(2) 62°35.504'N 25°44.441'E

2

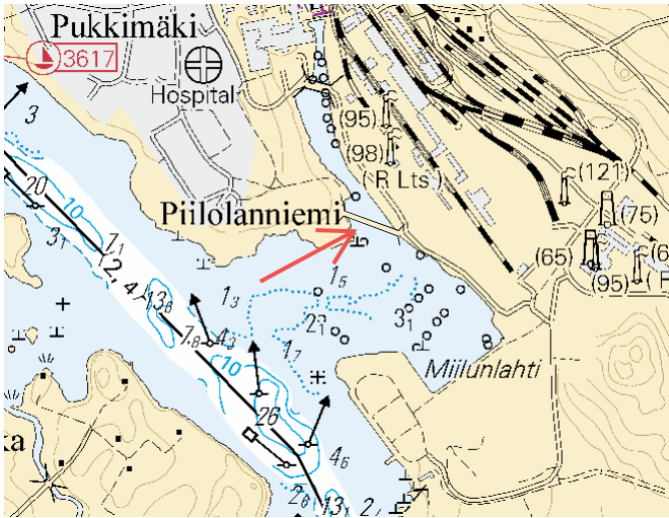


Image for reference, chart extracts not to scale of chart.

(Traficom, Helsinki/Helsingfors 2025)

Announcements

*270/2025

2025-11-28

Finland. General information of aids to navigation during winter conditions.

Charts

Previous

1

Conditions occurring during the winter and spring seasons – such as low temperatures, ice, snow and frost – may reduce the usability of aids to navigation. Aids to navigation may be off station, destroyed or damaged, and their lights may be unreliable or unlit. Aids to navigation may be temporarily replaced with virtual AIS AtoNs. After the winter season, the inspection of spar buoys and other buoys lasts several weeks. Vessels are advised to navigate with caution.

(Traficom, Helsinki/Helsingfors 2025)

Current Preliminary (P) and Temporary (T) notices (28.11.2025)

Gulf of Finland

T&P	Charts	Gulf of Finland
174(T)/2019 🔗	951	SE of Bol'soj Tjuters. Obstructions
296(T)/2020 🔗	17, 18, 191, 952, A, B	Helsinki. Sipoo. Areas and borders
20(T)/2021 🔗	951, A	TSS OFF ROOSHER ISLAND. Lighthouse Rodser extinguished. Notice repeated. Buoyage
228(T)/2021 🔗	951, A	Krestovyy. Lighthouse Krestovyy extinguished. Notice repeated. Buoyage
65(T)/2022 🔗	A, S	Vyborg. Destroyed leading beacon. Notice repeated. Buoyage
66(T)/2022 🔗	A, S	Vyborg. Light extinguished. Notice repeated. Buoyage
86(T)/2022 🔗	18, 191, 952, A, B	Helsinki. Kruunuvuori. Restrictions on small craft traffic. Fairways
90(T)/2022 🔗	951	Tiskolovo. Lighthouse Kajbolovo. Buoyage
230(T)/2023 🔗	18, 191, A, B	Helsinki. Hernesaari. Buoyage. Areas and borders
194(T)/2024 🔗	18, 191, A, B	Helsinki. Sompasaari. Buoyage
78(T)/2025 🔗	15, 16	Loviisa. SE of Lighthouse Tiiskeri. ODAS spar buoy. Buoyage
130(T)/2025 🔗	18, 191, A, B	Helsinki. Hernesaari. Notice repeated. Buoyage
176(T)/2025 🔗	18, 191, A, B	Helsinki. West Harbour...Restrictions on traffic. Areas and borders
189(T)/2025 🔗	952, A, B	Paldiski. Light Pakri extinguished. Buoyage
211(T)/2025 🔗	15, 16, 101, 103, 951, A	Loviisa. Valko. Geotechnical seabed surveys. Areas and borders
216(T)/2025 🔗	18, 191, A, B	Helsinki. Sompasaari. Nihti. Areas and borders
228(T)/2025 🔗	18, 191, 192, A, B	Helsinki. Santahamina. Areas and borders
229(T)/2025 🔗	17, 103, A	Porvoo. Kilpilahti. Dredging and excavation. Areas and borders
249(T)/2025 🔗	21, B	Raseborg. Ekenäs. (MSL/MW). Obstructions

Archipelago Sea

T&P	Charts	Archipelago Sea
189(T)/2023 ↗	26, D	Pargas. Kirjala...Restrictions on traffic. Areas and borders
40(T)/2024 ↗	26, 190, D	Naantali. Raumakari. Särkänsalmi. Kirkonsalmi. Notice repeated. Buoyage
168(T)/2024 ↗	25, 26, 37, D	Pargas. Seili. ODAS buoy. Buoyage
261(T)/2025 ↗	26, 190, D	Port of Turku. Construction works. Notice repeated. Areas and borders

Aland Sea

T&P	Charts	Aland Sea
192(T)/2025 ↗	32, 162, 753	Föglö. Finngrund. Buoyage

Bothnian Sea

T&P	Charts	Bothnian Sea
6(T)/2025 ↗	42, 125	Pori. Tahkoluoto. Notice repeated. Buoyage
165(T)/2025 ↗	955	E of Söderhamn. Light Hällgrund extinguished. Buoyage
241(T)/2025 ↗	956, 957, 8065	Örnsköldsvik. Ullånger. Lights unlit. Buoyage

The Quark

T&P	Charts	The Quark
247(T)/2024 ↗	48, 820, 956, 957	Vaasa. Johansson. Buoyage
254(T)/2025 ↗	47, 48, 822, 956, 957	Buoys and spar buoy temporarily withdrawn for the winter. Virtual AIS. Buoyage
264(T)/2025 ↗	47, 825, 956, 957, 8061, 8065	TSS IN NORRA KVARKEN. Buoys and spar buoys temporarily withdrawn for the wint...

Bay of Bothnia

T&P	Charts	Bay of Bothnia
145(T)/2024 ↗	57, 846, 958, 8071	Hailuoto. Bridge construction work. Areas and borders
164(T)/2024 ↗	57, 119, 846	Oulu. Pikisaari. Fairways
3(T)/2025 ↗	57, 60, 848, 958	Off Oulu. SW of Lighthouse Oulu 1. Lost buoy. Virtual AIS. Buoyage
83(T)/2025 ↗	57, 846	Hailuoto. Boating passages at the Riutunkari and Huikku bridges.
117(T)/2025 ↗	59, 854	Off Tornio. Maintenance of aids to navigation. Buoyage
257(T)/2025 ↗	60, 958	Buoys temporarily withdrawn for the winter. Virtual AIS. Buoyage
266(T)/2025 ↗	57, 846	Hailuoto. Boating passages at the Huikku bridge. Areas and borders

Vuoksi watercourse

T&P	Charts	Vuoksi watercourse
64(T)/2025 ↗	L	Lappeenranta. Muukonsaari. Buoyage
72(T)/2025 ↗	M	Varkaus. Kortesaaret. Buoyage

Kymijoki watercourse

T&P	Charts	Kymijoki watercourse
-	-	

Kokemäijoki watercourse

T&P	Charts	Kokemäijoki watercourse
-	-	

Oulujoki watercourse

T&P	Charts	Oulujoki watercourse
-	-	

Paatsjoki watercourse

T&P	Charts	Paatsjoki watercourse
-	-	

Saimaa Canal

T&P	Charts	Saimaa Canal
247(T)/2025 ↗		Saimaa Canal closed for the winter season.

Northern Baltic

T&P	Charts	Northern Baltic
11(T)/2024 ↗	952, 953, 954	Hiiumaa. Tahkuna. Light Lehtma extinguished. Buoyage
259(T)/2025 ↗	952, 953, 954	Hiiumaa. Lehtma. Withdrawn pilot boarding place. Pilotage

Announcements

T&P	Charts	Announcements
137(T)/2023 ↗		Helsinki. Korkeasaari...Restrictions on small craft traffic
102(T)/2024 ↗		Pargas. Hessund. Bridge construction work.
251(T)/2025 ↗		Archipelago Sea. Naval exercise Freezing Winds 25.