



Notices to Mariners

NtM 34/2025

Notices: 271 - 272 / 10.12.2025



Table of Contents

Title	Page
Index by Area	2
Index by Chart	3
Aland Sea	4
Current Preliminary (P) and Temporary (T) notices (10.12.2025)	6

Index by Area

Aland Sea

Charts

*271(T)/2025

32, 160, 756, 757

*272/2025

32, 162, 753

Index by Chart

Charts	Notices
32	*271(T)/2025, *272/2025
160	*271(T)/2025
162	*272/2025
753	*272/2025
756	*271(T)/2025
757	*271(T)/2025

Aland Sea

*271(T)/2025

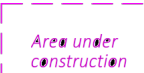
2025-12-10

Finland. Aland Sea. Mariehamn. West Harbour. Construction works. Areas and borders

Charts		Previous
32	(INT 1195)	252/2025 ↗
160	(INT 1156)	236/2025 ↗
756		236/2025 ↗
757.A		214/2025 ↗

Time: to approx. 31 December 2027

1
Vessels passing quays 1-2, must proceed with caution and without creating wash.
Contact number: Eriksson Bygg Ab. Bengt Eriksson 358 4573135795

2
32, 160, 756, 757.A
Add  Between the following positions: 60°05.73'N 19°55.60'E

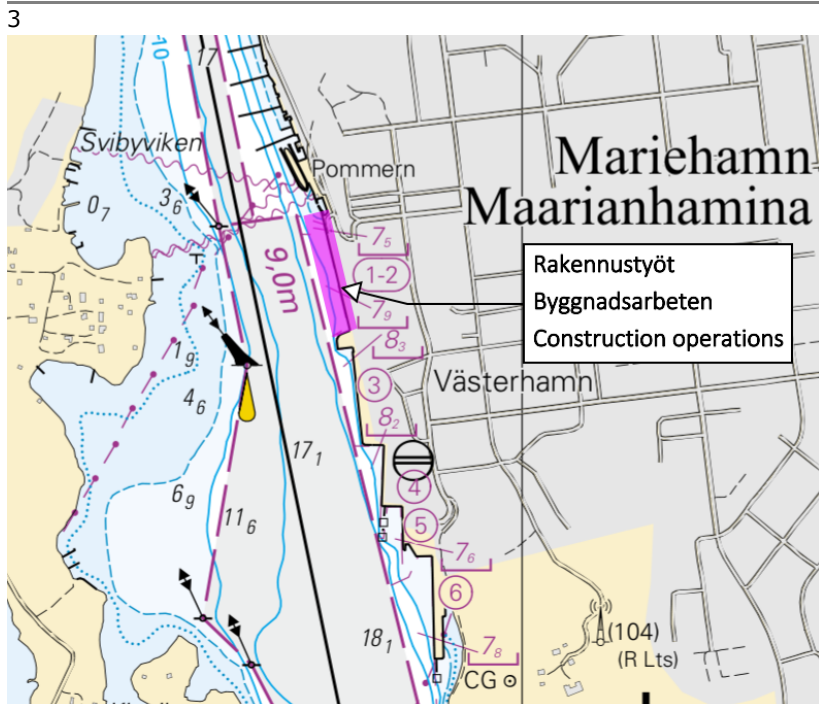


Image for reference, chart extracts not to scale of chart.

(Traficom, Helsinki/Helsingfors 2025)

*272/2025

2025-12-10

Finland. Aland Sea. Föglö. Finngrund. Leading beacons in operation.
Buoyage

Charts		Previous
32	(INT 1195)	271/2025 ↗
162	(INT 1157)	252/2025 ↗
753		252/2025 ↗

Cancelled: 192(T)/2025 [↗](#)

1		32, 162, 753			
Amend			Front		
	FINNGRUND	FINNGRUND		60°03.433'N	20°18.371'E
	Q (exting)	Q			6258, (C4574)

2		32, 162, 753			
Amend			Rear		
	FINNGRUND	FINNGRUND		60°03.263'N	20°18.287'E
	LFl.6s (exting) 	LFl.6s			6259, (C4574.1)

(Traficom, Helsinki/Helsingfors 2025)

Current Preliminary (P) and Temporary (T) notices (10.12.2025)

Gulf of Finland

T&P	Charts	Gulf of Finland
174(T)/2019 🔗	951	SE of Bol'soj Tjuters. Obstructions
296(T)/2020 🔗	17, 18, 191, 952, A, B	Helsinki. Sipoo. Areas and borders
20(T)/2021 🔗	951, A	TSS OFF ROOSHER ISLAND. Lighthouse Rodser extinguished. Notice repeated. Buoyage
228(T)/2021 🔗	951, A	Krestovyy. Lighthouse Krestovyy extinguished. Notice repeated. Buoyage
65(T)/2022 🔗	A, S	Vyborg. Destroyed leading beacon. Notice repeated. Buoyage
66(T)/2022 🔗	A, S	Vyborg. Light extinguished. Notice repeated. Buoyage
86(T)/2022 🔗	18, 191, 952, A, B	Helsinki. Kruunuvuori. Restrictions on small craft traffic. Fairways
90(T)/2022 🔗	951	Tiskolovo. Lighthouse Kajbolovo. Buoyage
230(T)/2023 🔗	18, 191, A, B	Helsinki. Hernesaari. Buoyage. Areas and borders
194(T)/2024 🔗	18, 191, A, B	Helsinki. Sompasaari. Buoyage
78(T)/2025 🔗	15, 16	Loviisa. SE of Lighthouse Tiiskeri. ODAS spar buoy. Buoyage
130(T)/2025 🔗	18, 191, A, B	Helsinki. Hernesaari. Notice repeated. Buoyage
176(T)/2025 🔗	18, 191, A, B	Helsinki. West Harbour...Restrictions on traffic. Areas and borders
189(T)/2025 🔗	952, A, B	Paldiski. Light Pakri extinguished. Buoyage
211(T)/2025 🔗	15, 16, 101, 103, 951, A	Loviisa. Valko. Geotechnical seabed surveys. Areas and borders
216(T)/2025 🔗	18, 191, A, B	Helsinki. Sompasaari. Nihti. Areas and borders
228(T)/2025 🔗	18, 191, 192, A, B	Helsinki. Santahamina. Areas and borders
229(T)/2025 🔗	17, 103, A	Porvoo. Kilpilahti. Dredging and excavation. Areas and borders
249(T)/2025 🔗	21, B	Raseborg. Ekenäs. (MSL/MW). Obstructions

Archipelago Sea

T&P	Charts	Archipelago Sea
189(T)/2023 ↗	26, D	Pargas. Kirjala...Restrictions on traffic. Areas and borders
40(T)/2024 ↗	26, 190, D	Naantali. Raumakari. Särkänsalmi. Kirkonsalmi. Notice repeated. Buoyage
168(T)/2024 ↗	25, 26, 37, D	Pargas. Seili. ODAS buoy. Buoyage
261(T)/2025 ↗	26, 190, D	Port of Turku. Construction works. Notice repeated. Areas and borders

Aland Sea

T&P	Charts	Aland Sea
271(T)/2025 ↗	32, 160, 756, 757	Mariehamn. West Harbour. Construction works. Areas and borders

Bothnian Sea

T&P	Charts	Bothnian Sea
6(T)/2025 ↗	42, 125	Pori. Tahkoluoto. Notice repeated. Buoyage
165(T)/2025 ↗	955	E of Söderhamn. Light Hällgrund extinguished. Buoyage
241(T)/2025 ↗	956, 957, 8065	Örnsköldsvik. Ullånger. Lights unlit. Buoyage

The Quark

T&P	Charts	The Quark
247(T)/2024 ↗	48, 820, 956, 957	Vaasa. Johansson. Buoyage
254(T)/2025 ↗	47, 48, 822, 956, 957	Buoys and spar buoy temporarily withdrawn for the winter. Virtual AIS. Buoyage
264(T)/2025 ↗	47, 825, 956, 957, 8061, 8065	TSS IN NORRA KVARKEN. Buoys and spar buoys temporarily withdrawn for the wint...

Bay of Bothnia

T&P	Charts	Bay of Bothnia
145(T)/2024 ↗	57, 846, 958, 8071	Hailuoto. Bridge construction work. Areas and borders
164(T)/2024 ↗	57, 119, 846	Oulu. Pikisaari. Fairways
3(T)/2025 ↗	57, 60, 848, 958	Off Oulu. SW of Lighthouse Oulu 1. Lost buoy. Virtual AIS. Buoyage
83(T)/2025 ↗	57, 846	Hailuoto. Boating passages at the Riutunkari and Huikku bridges.
117(T)/2025 ↗	59, 854	Off Tornio. Maintenance of aids to navigation. Buoyage
257(T)/2025 ↗	60, 958	Buoys temporarily withdrawn for the winter. Virtual AIS. Buoyage
266(T)/2025 ↗	57, 846	Hailuoto. Boating passages at the Huikku bridge. Areas and borders

Vuoksi watercourse

T&P	Charts	Vuoksi watercourse
64(T)/2025 ↗	L	Lappeenranta. Muukonsaari. Buoyage
72(T)/2025 ↗	M	Varkaus. Kortesaaret. Buoyage

Kymijoki watercourse

T&P	Charts	Kymijoki watercourse
-	-	

Kokemäijoki watercourse

T&P	Charts	Kokemäijoki watercourse
-	-	

Oulujoki watercourse

T&P	Charts	Oulujoki watercourse
-	-	

Paatsjoki watercourse

T&P	Charts	Paatsjoki watercourse
-	-	

Saimaa Canal

T&P	Charts	Saimaa Canal
247(T)/2025 ↗		Saimaa Canal closed for the winter season.

Northern Baltic

T&P	Charts	Northern Baltic
11(T)/2024 ↗	952, 953, 954	Hiiumaa. Tahkuna. Light Lehtma extinguished. Buoyage
259(T)/2025 ↗	952, 953, 954	Hiiumaa. Lehtma. Withdrawn pilot boarding place. Pilotage

Announcements

T&P	Charts	Announcements
137(T)/2023 ↗		Helsinki. Korkeasaari...Restrictions on small craft traffic
102(T)/2024 ↗		Pargas. Hessund. Bridge construction work.
251(T)/2025 ↗		Archipelago Sea. Naval exercise Freezing Winds 25.