



Notices to Mariners

NtM 35/2025

Notices: 273 - 279 / 20.12.2025



Table of Contents

Title	Page
Index by Area	2
Index by Chart	3
Gulf of Finland	4
Archipelago Sea	6
Announcements	9
Current Preliminary (P) and Temporary (T) notices (19.12.2025)	10

Index by Area

Gulf of Finland

Charts

*273/2025	20, B
*274/2025	19, 132, B
*275/2025	134, A

Archipelago Sea

Charts

*276/2025	25, 26, 37, D
*277/2025	26, 190, D
*278(T)/2025	26, 190, D

Announcements

Charts

*279/2025

Index by Chart

Charts	Notices
19	*274/2025
20	*273/2025
25	*276/2025
26	*276/2025, *277/2025, *278(T)/2025
37	*276/2025
132	*274/2025
134	*275/2025
190	*277/2025, *278(T)/2025
A	*275/2025
B	*273/2025, *274/2025
D	*276/2025, *277/2025, *278(T)/2025

Gulf of Finland

*273/2025

2025-12-19

Finland. Gulf of Finland. Ingå. Bastholmarna. Buoyage

Charts

20, 20.A
B632

(INT 1252)

Previous

168/2025 [↗](#)
249/2025 [↗](#)

1 20, 20.A, B632
Amend  59°59.716'N 23°59.967'E 78714

(Traficom, Helsinki/Helsingfors 2025)

*274/2025

2025-12-19

Finland. Gulf of Finland. Kirkkonummi. Svartholmen. Buoyage

Charts

19
132
B630

(INT 1251)

(INT 12511)

Previous

161/2025 [↗](#)
161/2025 [↗](#)
273/2025 [↗](#)

1 19, 132, B630
Amend  60°03.204'N 24°21.448'E 12140

(Traficom, Helsinki/Helsingfors 2025)

*275/2025

2025-12-19

Finland. Gulf of Finland. Hamina. Hillonniemi. Fairway areas

Charts

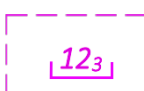
134
A609.2

(INT 1153)

Previous

230/2025 [↗](#)
250/2025 [↗](#)

References: [230/2025](#) [↗](#)

1 134, A609.2
Add  Swept area edge line between positions:
(1) 60°31.550'N 27°10.009'E
(2) 60°31.607'N 27°09.985'E
(3) 60°31.605'N 27°09.978'E
(4) 60°31.549'N 27°10.002'E

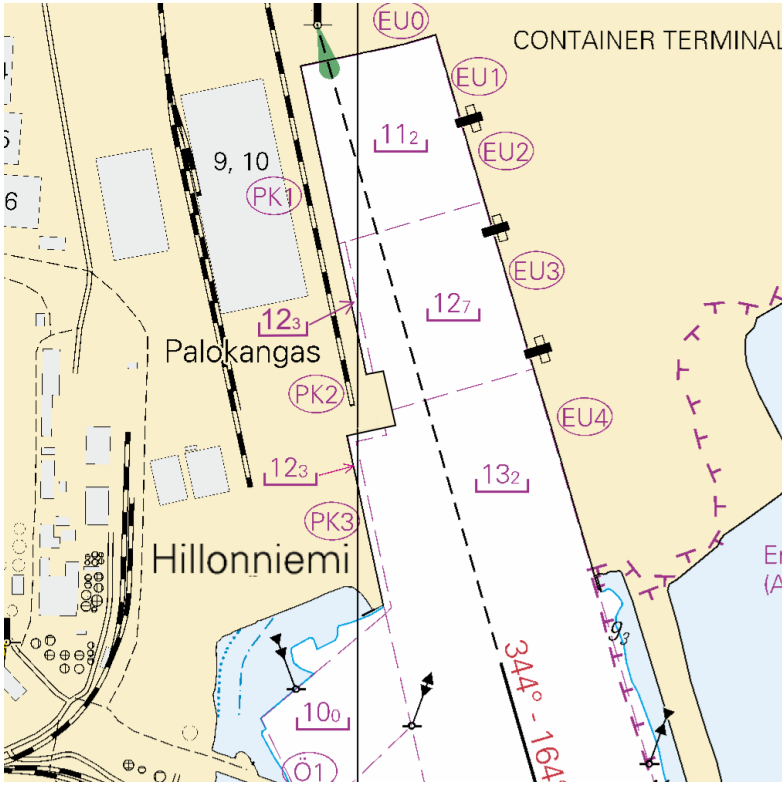


Image for reference, chart extracts not to scale of chart.

(Traficom, Helsinki/Helsingfors 2025)

Archipelago Sea

*276/2025


2025-12-19

Finland. Archipelago Sea. Pargas. Seili. ODAS buoy. Notice repeated.
Buoyage

Charts		Previous
25	(INT 1188)	/
26	(INT 1189)	/
37	(INT 1198)	/
D707, D708, D718, D719		263/2025 ↗

Time: Until further notice

Cancelled: 168(T)/2024 [↗](#)

1	25, 26, 37, D707, D708, D718, D719		
Add		60°15.202'N	21°57.163'E
	ODAS		

(Turun ammattikorkeakoulu, 2025)

*277/2025

2025-12-19


Finland. Archipelago Sea. Naantali. Raumakari. Särkänsalmi. Kirkonsalmi.
Notice repeated. Buoyage

Charts		Previous
26	(INT 1189)	276/2025 ↗
190	(INT 1158)	/
D706, D706.1, D720, D721		276/2025 ↗

Time: Until further notice

Cancelled: 40(T)/2024 [↗](#)

1			
	Rafts with seal repellent systems for research purposes have been anchored off Naantali, and in Raumakari, Särkänsalmi and Kirkonsalmi. The rafts are equipped with yellow lit special marks, the radar reflectors and with lit wind generators.		

2	26, D706, D720, D721		
Add		60°27.583'N	21°55.558'E

3	26, D706, D721		
Add		60°27.553'N	21°55.751'E

4

26, D720, D721

Add



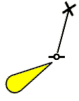
60°28.941'N

21°52.520'E

5

26, 190, D706, D706.1

Add



60°27.660'N

22°01.282'E

6

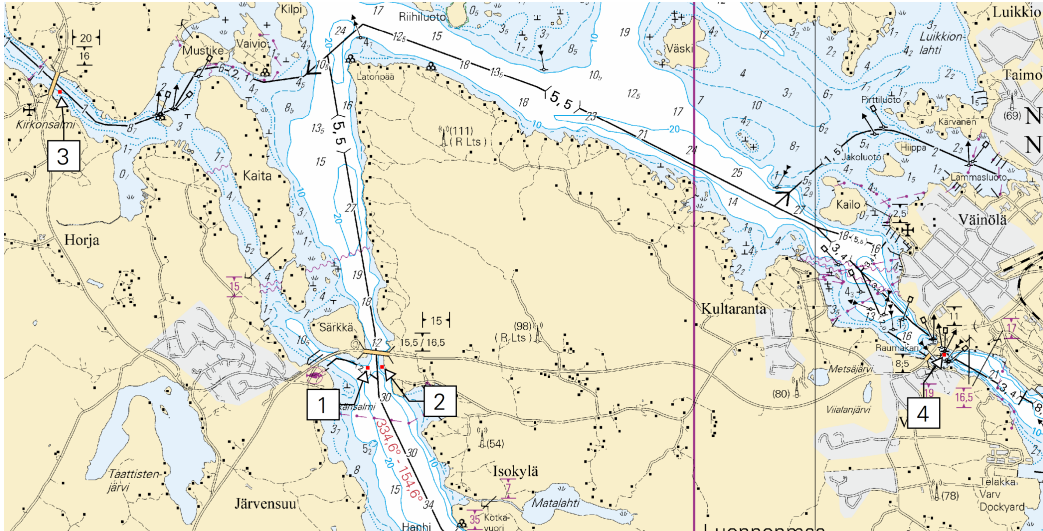


Image for reference, chart extracts not to scale of chart.

7



Image for reference, chart extracts not to scale of chart.

(Luonnonvarakeskus, Naturresursinstitutet, Natural Resources Institute Finland (LUKE) 2025)

*278(T)/2025

2025-12-19

Finland. Archipelago Sea. Port of Turku. Construction works. Notice repeated. Areas and borders

Charts		Previous
26	(INT 1189)	277/2025 ↗
190, 190.C	(INT 1158)	277/2025 ↗
D706, D706.2		277/2025 ↗

Time: to approx. 30 June 2026

References: [267\(T\)/2024](#) [↗](#)

Cancelled: [261\(T\)/2025](#) [↗](#)

1

Construction work in progress in the area marked in the chartlet. Vessels navigating in the area are advised to reduce their speed and avoid creating wash in the vicinity of the work vessels. Work teams monitor VHF channel 71.

Tug boat SPARK, MMSI: 230983050, Call sign OG9923.

2

26, 190, 190.C, D706, D706.2

Add	Between the following positions:	(1)	60°26.35'N	22°13.15'E
		(2)	60°26.23'N	22°13.07'E
		(3)	60°26.17'N	22°12.96'E
	Construction works	(4)	60°26.15'N	22°12.99'E
		(5)	60°26.19'N	22°13.13'E
		(6)	60°26.36'N	22°13.20'E

3

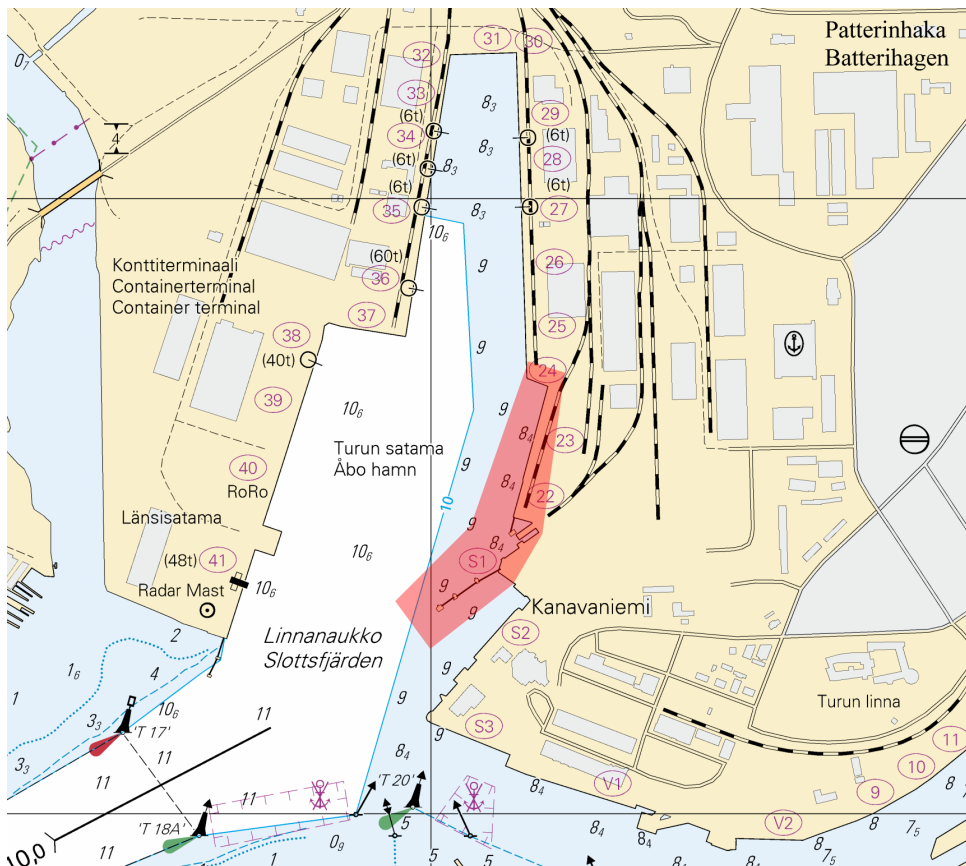


Image for reference, chart extracts not to scale of chart.

Announcements

*279/2025

2025-12-19

Finland. General information of aids to navigation during winter conditions.

Charts

Previous

References:270/2025 [↗](#)

1

Conditions occurring during the winter and spring seasons – such as low temperatures, ice, snow and frost – may reduce the usability of aids to navigation. Aids to navigation may be off station, destroyed or damaged, and their lights may be unreliable or unlit. Aids to navigation may be temporarily replaced with virtual AIS AtoNs. After the winter season, the inspection of spar buoys and other buoys lasts several weeks. Vessels are advised to navigate with caution.

(Traficom, Helsinki/Helsingfors 2025)

Current Preliminary (P) and Temporary (T) notices (19.12.2025)

Gulf of Finland

T&P	Charts	Gulf of Finland
174(T)/2019 🔗	951	SE of Bol'soj Tjuters. Obstructions
296(T)/2020 🔗	17, 18, 191, 952, A, B	Helsinki. Sipoo. Areas and borders
20(T)/2021 🔗	951, A	TSS OFF ROOSHER ISLAND. Lighthouse Rodser extinguished. Notice repeated. Buoyage
228(T)/2021 🔗	951, A	Krestovyy. Lighthouse Krestovyy extinguished. Notice repeated. Buoyage
65(T)/2022 🔗	A, S	Vyborg. Destroyed leading beacon. Notice repeated. Buoyage
66(T)/2022 🔗	A, S	Vyborg. Light extinguished. Notice repeated. Buoyage
86(T)/2022 🔗	18, 191, 952, A, B	Helsinki. Kruunuvuori. Restrictions on small craft traffic. Fairways
90(T)/2022 🔗	951	Tiskolovo. Lighthouse Kajbolovo. Buoyage
230(T)/2023 🔗	18, 191, A, B	Helsinki. Hernesaari. Buoyage. Areas and borders
194(T)/2024 🔗	18, 191, A, B	Helsinki. Sompasaari. Buoyage
78(T)/2025 🔗	15, 16	Loviisa. SE of Lighthouse Tiiskeri. ODAS spar buoy. Buoyage
130(T)/2025 🔗	18, 191, A, B	Helsinki. Hernesaari. Notice repeated. Buoyage
176(T)/2025 🔗	18, 191, A, B	Helsinki. West Harbour...Restrictions on traffic. Areas and borders
189(T)/2025 🔗	952, A, B	Paldiski. Light Pakri extinguished. Buoyage
211(T)/2025 🔗	15, 16, 101, 103, 951, A	Loviisa. Valko. Geotechnical seabed surveys. Areas and borders
216(T)/2025 🔗	18, 191, A, B	Helsinki. Sompasaari. Nihti. Areas and borders
228(T)/2025 🔗	18, 191, 192, A, B	Helsinki. Santahamina. Areas and borders
229(T)/2025 🔗	17, 103, A	Porvoo. Kilpilahti. Dredging and excavation. Areas and borders
249(T)/2025 🔗	21, B	Raseborg. Ekenäs. (MSL/MW). Obstructions

Archipelago Sea

T&P	Charts	Archipelago Sea
189(T)/2023 ↗	26, D	Pargas. Kirjala...Restrictions on traffic. Areas and borders
278(T)/2025 ↗	26, 190, D	Port of Turku. Construction works. Notice repeated. Areas and borders

Aland Sea

T&P	Charts	Aland Sea
271(T)/2025 ↗	32, 160, 756, 757	Mariehamn. West Harbour. Construction works. Areas and borders

Bothnian Sea

T&P	Charts	Bothnian Sea
6(T)/2025 ↗	42, 125	Pori. Tahkoluoto. Notice repeated. Buoyage
165(T)/2025 ↗	955	E of Söderhamn. Light Hällgrund extinguished. Buoyage
241(T)/2025 ↗	956, 957, 8065	Örnsköldsvik. Ullånger. Lights unlit. Buoyage

The Quark

T&P	Charts	The Quark
247(T)/2024 ↗	48, 820, 956, 957	Vaasa. Johansson. Buoyage
254(T)/2025 ↗	47, 48, 822, 956, 957	Buoys and spar buoy temporarily withdrawn for the winter. Virtual AIS. Buoyage
264(T)/2025 ↗	47, 825, 956, 957, 8061, 8065	TSS IN NORRA KVARKEN. Buoys and spar buoys temporarily withdrawn for the wint...

Bay of Bothnia

T&P	Charts	Bay of Bothnia
145(T)/2024 ↗	57, 846, 958, 8071	Hailuoto. Bridge construction work. Areas and borders
164(T)/2024 ↗	57, 119, 846	Oulu. Pikisaari. Fairways
3(T)/2025 ↗	57, 60, 848, 958	Off Oulu. SW of Lighthouse Oulu 1. Lost buoy. Virtual AIS. Buoyage
83(T)/2025 ↗	57, 846	Hailuoto. Boating passages at the Riutunkari and Huikku bridges.
117(T)/2025 ↗	59, 854	Off Tornio. Maintenance of aids to navigation. Buoyage
257(T)/2025 ↗	60, 958	Buoys temporarily withdrawn for the winter. Virtual AIS. Buoyage
266(T)/2025 ↗	57, 846	Hailuoto. Boating passages at the Huikku bridge. Areas and borders

Vuoksi watercourse

T&P	Charts	Vuoksi watercourse
64(T)/2025 ↗	L	Lappeenranta. Muukonsaari. Buoyage
72(T)/2025 ↗	M	Varkaus. Kortesaaret. Buoyage

Kymijoki watercourse

T&P	Charts	Kymijoki watercourse
-	-	

Kokemäijoki watercourse

T&P	Charts	Kokemäijoki watercourse
-	-	

Oulujoki watercourse

T&P	Charts	Oulujoki watercourse
-	-	

Paatsjoki watercourse

T&P	Charts	Paatsjoki watercourse
-	-	

Saimaa Canal

T&P	Charts	Saimaa Canal
247(T)/2025 ↗		Saimaa Canal closed for the winter season.

Northern Baltic

T&P	Charts	Northern Baltic
11(T)/2024 ↗	952, 953, 954	Hiiumaa. Tahkuna. Light Lehtma extinguished. Buoyage
259(T)/2025 ↗	952, 953, 954	Hiiumaa. Lehtma. Withdrawn pilot boarding place. Pilotage

Announcements

T&P	Charts	Announcements
137(T)/2023 ↗		Helsinki. Korkeasaari...Restrictions on small craft traffic
102(T)/2024 ↗		Pargas. Hessund. Bridge construction work.
251(T)/2025 ↗		Archipelago Sea. Naval exercise Freezing Winds 25.