



# Notices to Mariners

## NtM 36/2025

Notices: 280 - 290 / 31.12.2025



# Table of Contents

Title	Page
Index by Area	2
Index by Chart	3
Gulf of Finland	4
Archipelago Sea	6
Announcements	10
Current Preliminary (P) and Temporary (T) notices (19.12.2025)	21

# Index by Area

## Gulf of Finland

## Charts

*280/2025	17, 103, A
*281/2025	14, 138, A

## Archipelago Sea

## Charts

*282/2025	26
*283/2025	D
*284(T)/2025	26, D

## Announcements

## Charts

*285/2025
*286/2025
*287/2025
*288/2025
*289/2025
*290/2025

# Index by Chart

<b>Charts</b>	<b>Notices</b>
14	*281/2025
17	*280/2025
26	*282/2025, *284(T)/2025
103	*280/2025
138	*281/2025
A	*280/2025, *281/2025
D	*283/2025, *284(T)/2025




# Gulf of Finland

\*280/2025

2025-12-19

Finland. Gulf of Finland. Porvoo. Emäsalo. Buoyage

Charts	Previous
17	(INT 1249) 229/2025 <a href="#">↗</a>
103.C	(INT 12491) 229/2025 <a href="#">↗</a>
A621, A622	275/2025 <a href="#">↗</a>

1		17, A621, A622			
Amend			60°13.063'N	25°36.114'E	89296
2		17, A621, A622			
Amend			60°14.359'N	25°35.028'E	89311
3		17, 103.C, A621, A622			
Amend			60°15.507'N	25°34.087'E	89313



(Traficom, Helsinki/Helsingfors 2025)

\*281/2025

2025-12-19

Finland. Gulf of Finland. Kotka. Hovinsaari. Buoyage

Charts	Previous
14	(INT 1246) 250/2025 <a href="#">↗</a>
138	(INT 1155) 250/2025 <a href="#">↗</a>
A609, A609.1	280/2025 <a href="#">↗</a>

1		14, 138, A609, A609.1			
Delete		Front	60°28.591'N	26°55.751'E	152
2		14, 138, A609, A609.1			
Delete		Rear	60°28.600'N	26°55.626'E	153
3		14, 138, A609, A609.1			
Delete	— — — —	Leading line between the following positions:	(1) 60°28.600'N	26°55.626'E	
			(2) 60°28.566'N	26°56.082'E	

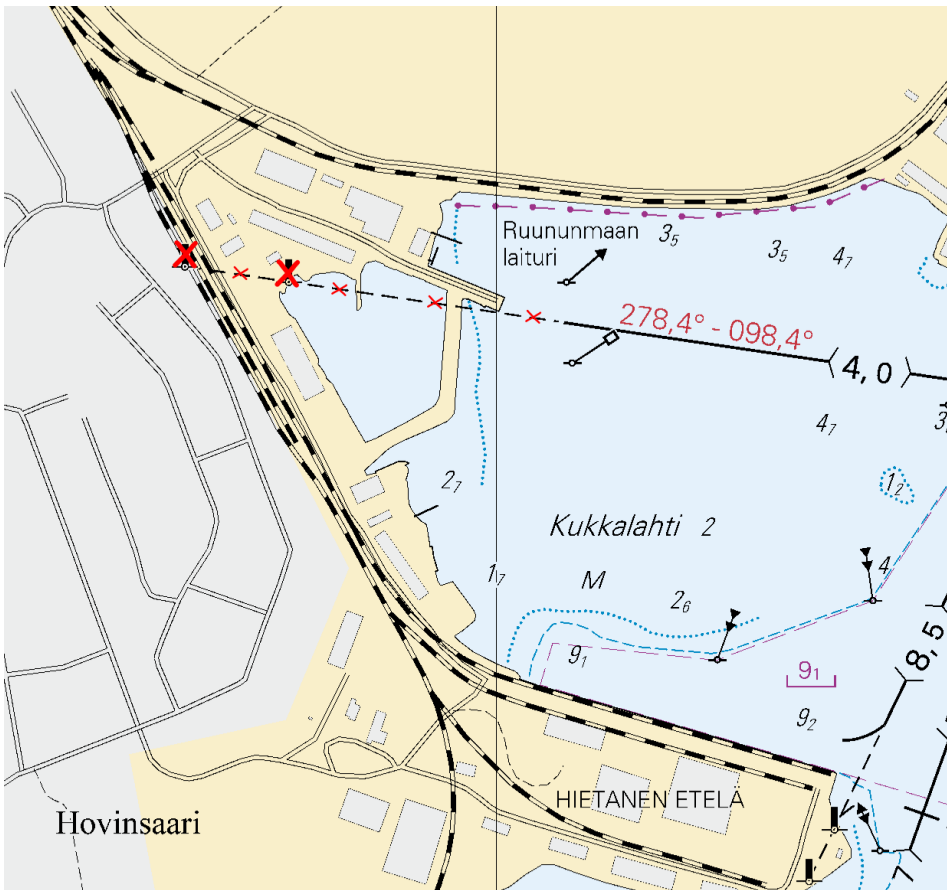


Image for reference, chart extracts not to scale of chart.

(Traficom, Helsinki/Helsingfors 2025)

# Archipelago Sea

\*282/2025

2025-12-19

Finland. Archipelago Sea. Naantali. Bulk Terminal. Fairway areas

## Charts

26

(INT 1189)

## Previous

278/2025 [↗](#)

1

26

Add

14<sub>1</sub>

Swept area edge line between positions:

(1)	60°27.271'N	22°02.403'E
(2)	60°27.234'N	22°02.839'E
(3)	60°27.170'N	22°02.999'E
(4)	60°27.102'N	22°03.180'E
(5)	60°27.326'N	22°03.554'E
(6)	60°27.334'N	22°03.338'E
(7)	60°27.356'N	22°03.281'E
(8)	60°27.373'N	22°03.251'E
(9)	60°27.461'N	22°02.793'E
(10)	60°27.271'N	22°02.403'E

2

26

Add

8<sub>8</sub>

Swept area edge line between positions:

(1)	60°27.406'N	22°01.974'E
(2)	60°27.255'N	22°02.370'E
(3)	60°27.397'N	22°02.663'E
(4)	60°27.501'N	22°02.199'E
(5)	60°27.492'N	22°02.181'E
(6)	60°27.488'N	22°02.180'E
(7)	60°27.418'N	22°02.333'E
(8)	60°27.412'N	22°02.324'E
(9)	60°27.494'N	22°02.147'E
(10)	60°27.494'N	22°02.141'E
(11)	60°27.406'N	22°01.974'E

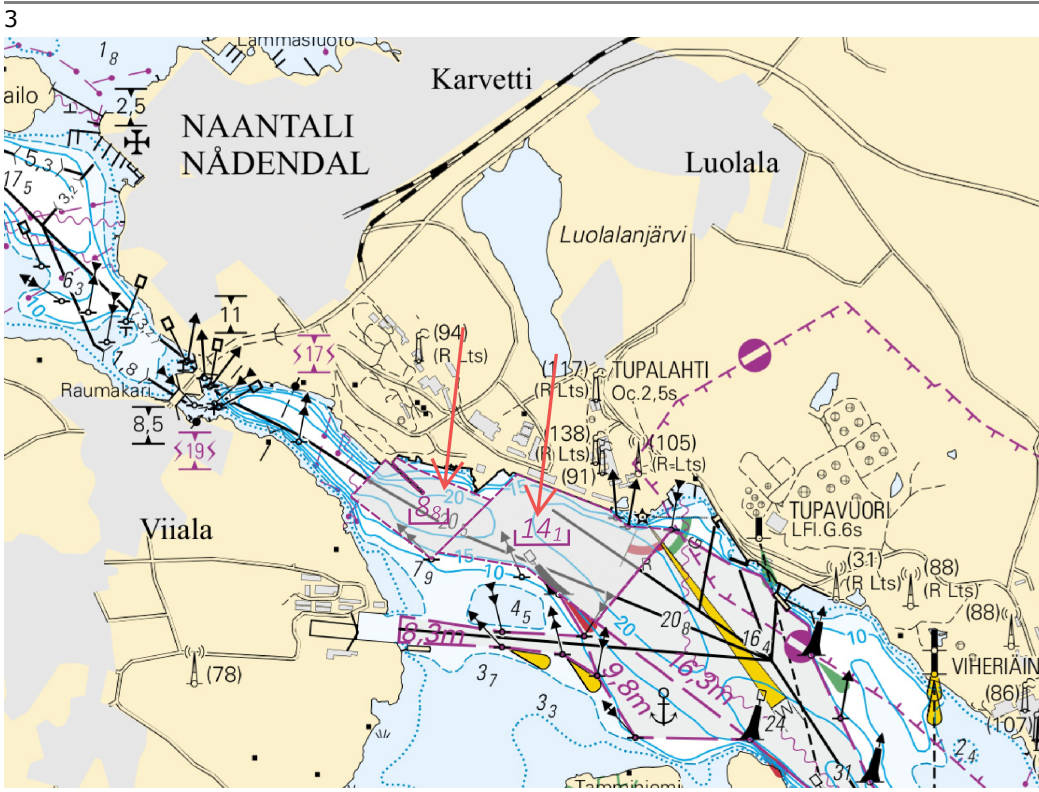


Image for reference, chart extracts not to scale of chart.

(Traficom, Helsinki/Helsingfors 2025)

\*283/2025

2025-12-19

Finland. Archipelago Sea. Raisio. Luonnonmaa. Dockyard. (MSL/MW).  
Buoyage. Fairway areas. Ports





**Charts**


D706, D706.1


**Previous**


278/2025 [↗](#)

1  
These amendments will be included in the upcoming editions of charts 26 and 190.  
The charts will be published in 19 December 2025.

2	D706, D706.1			
Add 		60°27.289'N	22°02.138'E	89300
Add 		60°27.334'N	22°01.995'E	89301
Add 		60°27.406'N	22°01.974'E	89299
Add 	D706, D706.1  Swept area edge line between positions:	(1) 60°27.406'N (2) 60°27.334'N (3) 60°27.289'N (4) 60°27.255'N (5) 60°27.406'N	22°01.974'E 22°01.995'E 22°02.138'E 22°02.370'E 22°01.974'E	

6	D706, D706.1		(1) 60°27.334'N 22°01.995'E
Add		Swept area edge line between positions:	(2) 60°27.327'N 22°01.976'E
			(3) 60°27.265'N 22°02.035'E
			(4) 60°27.289'N 22°02.138'E
			(5) 60°27.334'N 22°01.995'E

7	D706, D706.1		(1) 60°27.304'N 22°01.986'E
Add		Quay between the following positions:	(2) 60°27.306'N 22°01.995'E
			(3) 60°27.317'N 22°01.985'E
			(4) 60°27.316'N 22°01.976'E

8	D706, D706.1		(1) 60°27.263'N 22°02.026'E
Add		Quay between the following positions:	(2) 60°27.265'N 22°02.035'E
			(3) 60°27.261'N 22°02.038'E
			(4) 60°27.260'N 22°02.032'E

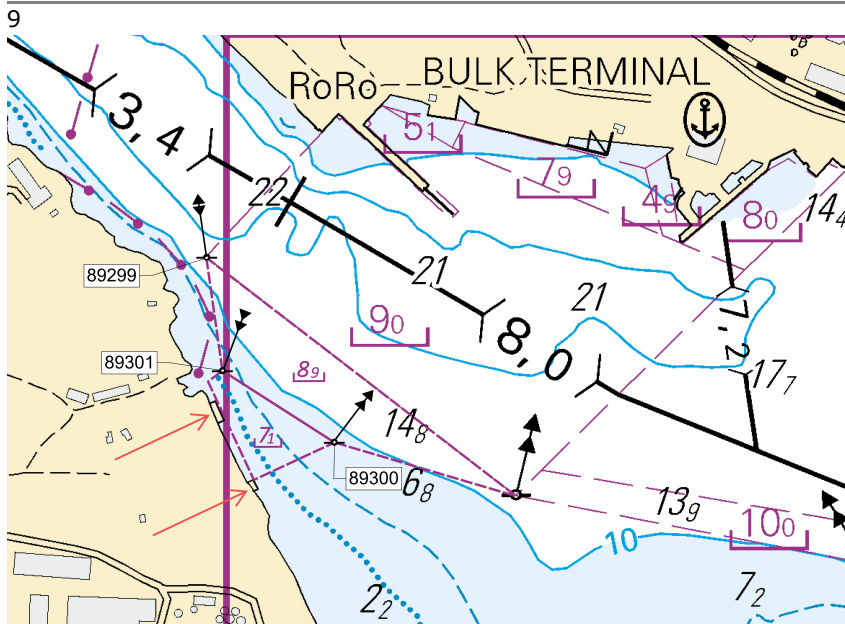


Image for reference, chart extracts not to scale of chart.

(Traficom, Helsinki/Helsingfors 2025)

\*284(T)/2025

2025-12-19

Finland. Archipelago Sea. Pargas. Kirjala. Bridge construction work.  
Restrictions on traffic. Areas and borders

**Charts**

26

(INT 1189)

**Previous**

282/2025 [↗](#)

D705

283/2025 [↗](#)

Time: to approx. 31 April 2026

Cancelled: 189(T)/2023 [↗](#)

---

1  
Demolition works of Kirjala old Bridge. The channel (3.6m) under the bridge is closed during the construction period.

---

2 26, D705

Add



60°21.951'N 22°21.503'E



Image for reference, chart extracts not to scale of chart.

(Traficom, Helsinki/Helsingfors 2025)

---

---

# Announcements

\*285/2025

2025-12-19

Finland. New chart editions. ( N2000 ) (BSCD2000).

[Charts](#)

[Previous](#)

References:225/2025 [↗](#)

1

<b>Nimi</b>	<b>Nro</b>	<b>INT</b>	<b>Mittakaava</b>	<b>Painos</b>	<b>Oikaisupäivämäärä</b>	<b>Myyntipäivämäärä</b>
<b>Namn</b>	<b>Nr</b>		<b>Skala</b>	<b>Upplaga</b>	<b>Rättelsedatum</b>	<b>Utgivningsdatum</b>
<b>Name</b>	<b>No.</b>		<b>Scale</b>	<b>Edition</b>	<b>Correction date</b>	<b>Release date</b>
Jurmo-Vänä	24	1187	1:50 000	6 New Edition	30.11.2025	19.12.2025
Korppoo, Korpo – Högsåra	25	1188	1:50 000	9 New Edition	30.11.2025	19.12.2025
Korppoo – Turku, Korpo – Åbo	26	1189	1:50 000	9 New Edition	30.11.2025	19.12.2025
Kökar-Utö	27	1190	1:50 000	7 New Edition	30.11.2025	19.12.2025
Kihti, Skiftet	28	1191	1:50 000	7 New Edition	30.11.2025	19.12.2025
Houtskari – Lypyrntti, Houtskär – Lypertö	29	1192	1:50 000	7 New Edition	30.11.2025	19.12.2025
Lövsjär	37	1198	1:50 000	3 New Edition	30.11.2025	19.12.2025
Lövsjär, Askgrund & Parainen, Pargas	105	11881	1:25 000	3 New Edition	30.11.2025	19.12.2025
Utö	167	11901	1:20 000	3 New Edition	30.11.2025	19.12.2025
Turku, Åbo	190	1158	1:20 000	6 New Edition	30.11.2025	19.12.2025

(Traficom, Helsinki/Helsingfors 2025)

\*286/2025

2025-12-19

Finland. New N2000 charts of Archipelago Sea.

[Charts](#)

[Previous](#)

References:87/2025 [↗](#)

**Uudet Saaristomeren N2000 -merikartat**  
**Nya Skärgårdshavets N2000 -sjökort**  
**New N2000 charts of Archipelago Sea**

24	Jurmo-Vänä	6 New Edition, NtM 33	30.11.2025
25	Korppoo, Korpo – Högsåra	9 New Edition, NtM 33	30.11.2025
26	Korppoo – Turku, Korpo – Åbo	9 New Edition, NtM 33	30.11.2025
27	Kökar-Utö	7 New Edition, NtM 33	30.11.2025
28	Kihti, Skiftet	7 New Edition, NtM 33	30.11.2025
29	Houtskari – Lypyrntti, Houtskär – Lypertö	7 New Edition, NtM 33	30.11.2025
37	Lövsjär	3 New Edition, NtM 33	30.11.2025
105	Lövsjär, Askgrund & Parainen, Pargas	3 New Edition, NtM 33	30.11.2025
167	Utö	3 New Edition, NtM 33	30.11.2025
190	Turku, Åbo	6 New Edition, NtM 33	30.11.2025

**ENC:**

Iniö	FI4EIJUD	Edition 6
W of Rymättylä	FI4EIJUE	Edition 8
Rymättylä	FI4EIJUF	Edition 8
Turku and Naantali	FI4EIJUG	Edition 8
Parainen	FI4EIJUH	Edition 5
Kihti, W part	FI4EIIQB	Edition 5
Skiftet	FI4EIIQC	Edition 9
Houtskär	FI49IIQD	Edition 1
Korppoo	FI4EIIQE	Edition 11
Nauvo	FI4EIIQF	Edition 7
Gullkrona	FI4EIIQG	Edition 5
Dragsfjärd	FI4EIIQH	Edition 5
Kökar	FI4EIHMB	Edition 6
Kökarfjärden	FI4EIHMC	Edition 8
Utö	FI4EIHMD	Edition 8
Jurmo	FI4EIHME	Edition 6
Borstö	FI4EIHMF	Edition 5
Vänä	FI4EIHMG	Edition 5
Iniö, Kustavi, Vuosnainen	FI5A042A	Edition 3
Ports of Turku and Naantali	FI59S190	Edition 5
Kökar, Hustö	FI5A044A	Edition 2
Utö and Jurmo	FI5A034A	Edition 3
Berghamn, Nötö, Östersjär	FI5A036A	Edition 3
Houtskär	FI5A038A	Edition 3
Vänä, Tunnhamn and Stensjär	FI5A028B	Edition 1
Lövsjär	FI5S25AA	Edition 6
Pargas, Askgrundet, Nagu	FI5A030A	Edition 3
Port of Turku, Tupavuori, Pansio and Kanavaniemi	FI6S190M	Edition 5

**Erityishuomiot:**

Julkaistujen uusien N2000 merikarttojen alueella osa väylistä sijaitsee N2000 julkaisualueen rajalla. Väylät jatkuvat kartoille, joissa tiedot ovat vielä keskivedessä (MSL). Vertaustason muutos vaikuttaa alueen kaikkien väylien mitoitussyväyslukemiin 20cm. Oikean vedenkorkeustiedon käyttäminen korostuu näillä alueilla. Ks. Karttaliitteet.

På de publicerade nya N2000 sjökortens område, en del av farlederna ligger på gränsen till N2000 utgivningsområde.

Farlederna fortsätter till kartor där uppgifterna fortfarande finns i medelvattenstånd (MSL). Referensnivå ändringen påverkar dimensioneringsdjupet för alla farleder i området 20cm. Att använda rätt information om vattenståndet accentueras i dessa områden. Se kartskisserna.

In the area of the published new N2000 nautical charts some of the fairways are located on the border of the N2000 publishing area. The fairways continue to the charts where the data is still in the mean sea level (MSL). The change in the chart datum affects 20cm to the design drafts of all fairways in the area. Using the correct water level information is emphasized in these areas. See attachments.

N2000 julkaisualueen rajalla sijaitsevia kauppamerenkulun väyliä: Huomioi merikartan vertaustasot. Handelssjöfartens farleder ligger på gränsen till N2000:s utgivningsområde: Beakta sjökortets referensnivå. Main approach channels on the border of the N2000 publishing area: Pay attention to the chart datum of charts.

### **Painetut kartat**

Utö-Hanko (VL 1) N2000 8.8m, MSL 9.0m

Trollholmen-Skinnarvik (VL 2) N2000 7.3m, MSL 7.5m

Mjösund (VL 2) N2000 4.8m, MSL 5m

### **ENC**

Utö-Hanko (VL 1) N2000 8.8m, MSL 9.0m

Airisto-Revgrund (VL 2) N2000 7.3m, MSL 7.5m

Norrlångvik (VL 2) N2000 4.0m, MSL 4.2m

Ks karttaliitteet: N2000 julkaisualueen raja 19.12.2025.  
Se kartskisserna: N2000 utgivningsområde 19.12.2025.  
See attachments: N2000 publishing area 19.12.2025.

Uuden julkaisualueen pienimittakaavaiset kartat (Yleiskartat 953, 954 ja General ENC FI29ARCW, FI29ARCE ) ovat vielä keskivesikarttoja (MSL).

Småskaliga kartor över området (Översiktskort 953, 954 och General ENC FI29ARCW, FI29ARCE) är ännu medelvattenståndssjökort (MSL).

Small-scale charts of the new publishing area (General Chart 953, 954 and General ENC FI29ARCW, FI29ARCE) are still mean sea level charts (MSL).

Lisätietoa N2000 väylä- ja merikarttauudistuksesta:

<https://www.traficom.fi/fi/n2000-vayla-ja-merikarttauudistus>

Suomen rannikon purjehdusopas:

<https://www.traficom.fi/fi/asioi-kanssamme/sailing-directions-finnish-waters>

Väylien käyttötapa uudistuu:

<https://www.traficom.fi/fi/liikenne/merenkulku/vaylien-kayttotapaa-uudistuu>

Väyläkortit:

<https://vayla.fi/palveluntuottajat/ammattimerenkulku/liikkuminen-vesivaylilla/vaylakortit>

N2000 vedenkorkeustiedot:

<https://www.ilmatieteenlaitos.fi/vedenkorkeus>

Väyliä käytetään uudistuu:

Användning av handelssjöfartens farleder:

The use of fairways in merchant shipping:

<https://www.traficom.fi/fi/liikenne/merenkulku/n2000-vayla-ja-merikarttaudistus/vaylien-kaytto-kauppamerenkulussa>

<https://www.traficom.fi/sv/transport/sjofart/anvandning-av-handelssjofartens-farleder>

<https://www.traficom.fi/en/transport/maritime/n2000-fairway-and-nautical-chart-reform/use-fairways-merchant-shipping>

Väyläkortit:

Farledskort:

Fairway cards:

<https://vayla.fi/palveluntuottajat/ammattimerenkulku/liikkuminen-vesivaylilla/vaylakortit>

<https://vayla.fi/sv/tjansteproducenter/yrkessjofart/att-fardas-i-farleder/farledskort>

<https://vayla.fi/en/service-providers/merchant-shipping/navigating/fairway-cards>

N2000 vedenkorkeustiedot:

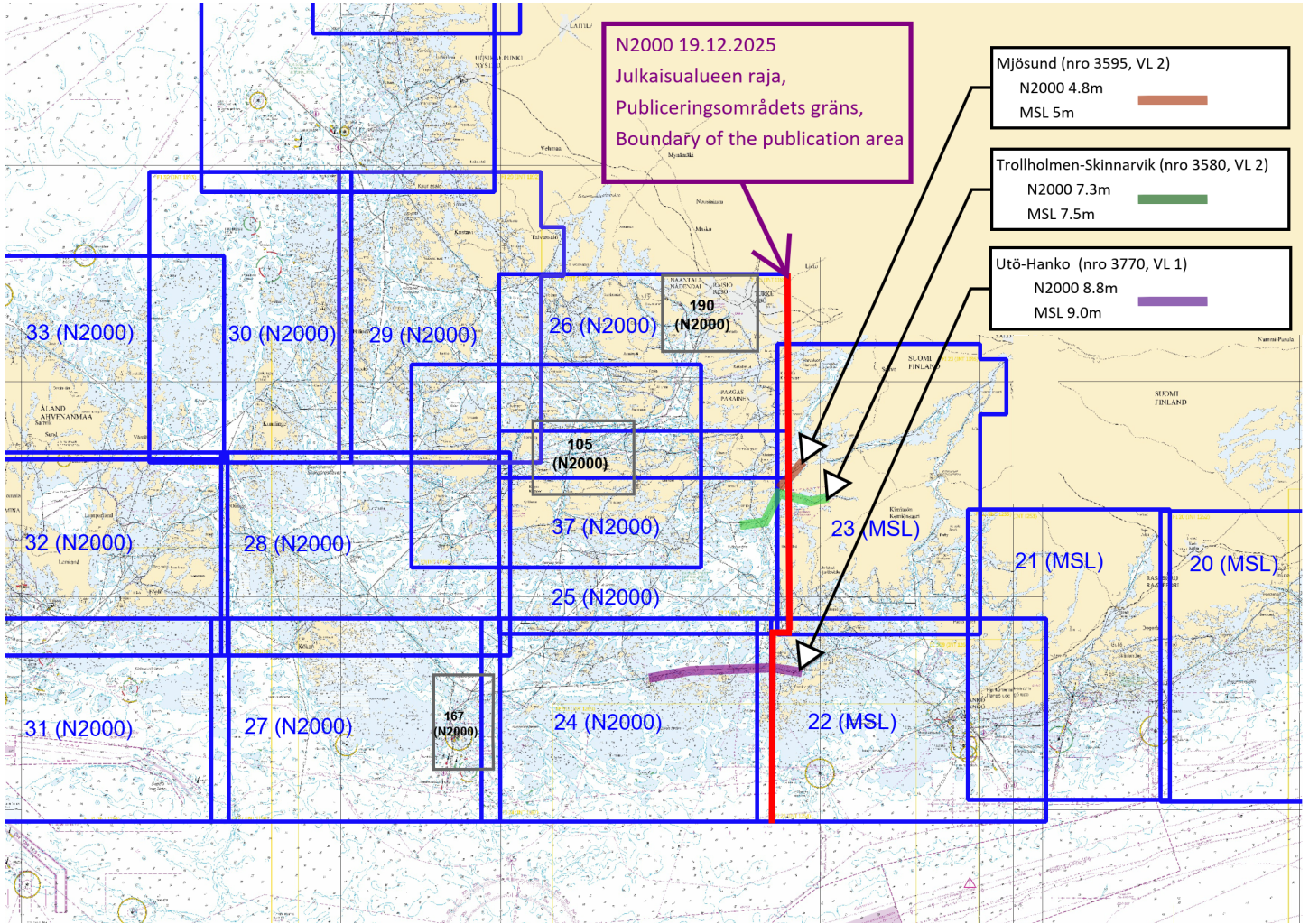
N2000 vattenståndsuppgifter:

N2000 Sea water level information

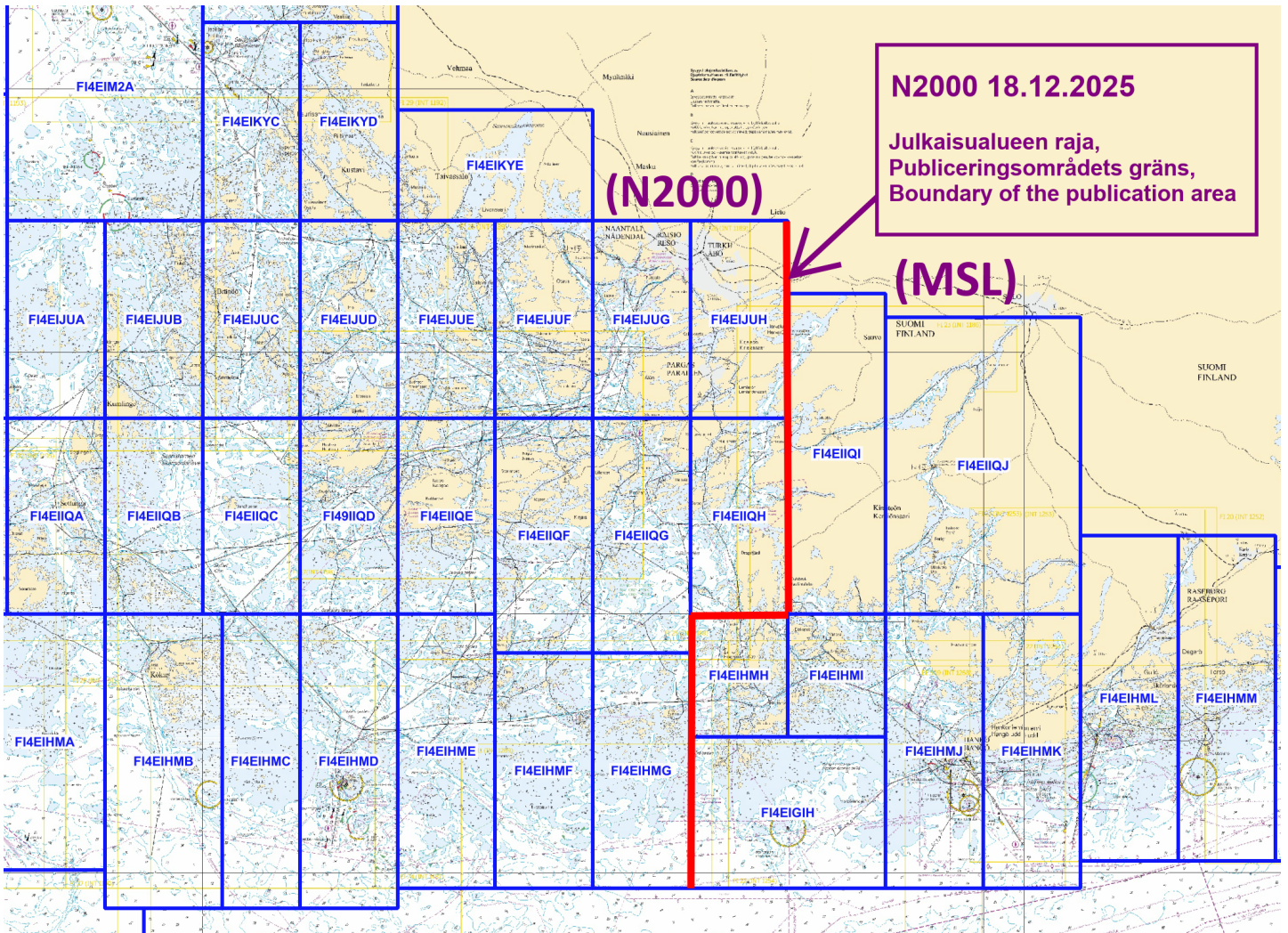
<https://www.ilmatieteenlaitos.fi/vedenkorkeus>

<https://sv.ilmatieteenlaitos.fi/vattenstandet>

<https://en.ilmatieteenlaitos.fi/sea-level>







(Traficom, Helsinki/Helsingfors 2025)

\*287/2025

2025-12-19

Finland. New depth reference level N2000 (BSCD2000) for charts.

**Charts**

**Previous**

References:225/2025 [🔗](#)

1

New depth reference level N2000 (BSCD2000) for charts

Finnish nautical charts and fairways are currently in the process of switching over to a new harmonised reference level for depth information that is tied to the national N2000 height system. The current reference level for depth information in sea areas is based on mean water level, and it will be replaced with a reference level that is tied to the N2000 vertical coordinate reference system.

The N2000 fairway and nautical chart reform is part of the Baltic Sea countries' joint project BSCD2000 (Baltic Sea Chart Datum 2000). The purpose of the project is to harmonise the interpretation of nautical chart data and available water depth in the Baltic Sea region. The migration to the new depth information reference level will affect the depth and fairway information presented on nautical charts. The changes to the information are caused by the difference between current reference level (MSL) and the zero position used in the N2000 system. Picture 3.

Integrated reference level

N2000 chart products present depth and fairway information using the N2000 height system that is tied to the Earth's crust instead of the mean sea level MSL (Mean Sea Level) / MW (Mean Water) in sea areas. When using the theoretical mean sea level, the zero level is equal to the average water level in the year in question, which means that the zero level has changed some millimetres each year. N2000 chart products present depth and fairway information using the N2000 height system that is tied to the Earth's crust without being influenced by the effects of the land uplift or sea level changes. Because the zero level in the N2000 system is below the current mean sea level (MSL), the depths on charts will, depending on the area, decrease by approximately 10–20 cm due to the reference level, and the prevailing water level will increase correspondingly. The available water depth does not change when sea level data in the N2000 format is taken into account. Picture 4.

The importance of water level in relation to the depth available will be accentuated. The Finnish Meteorological Institute has since September 2021 published its sea level observations and forecasts in the N2000 format as well as in relation to the theoretical mean sea level. The data is available on the Institute's website (<https://en.ilmatieteenlaitos.fi/sea-level>).

During the transition period, charts in accordance with both the old and the new system will be used. Therefore, it is important to check the reference level of the chart used and the corresponding water level reading. The list of nautical chart products always provides up-to-date information on the valid edition of the charts and the reference level used therein.

List of nautical chart products: <https://www.traficom.fi/fi/merikartoituksen-tuoteluettelo>

More information about the N2000 fairway and nautical chart reform: <https://www.traficom.fi/en/transport/maritime/n2000-fairway-and-nautical-chart-reform-improved>.

---

2

New channel depth instructions:

<https://www.traficom.fi/en/news/new-channel-depth-instructions-enter-force-15-november-2021>

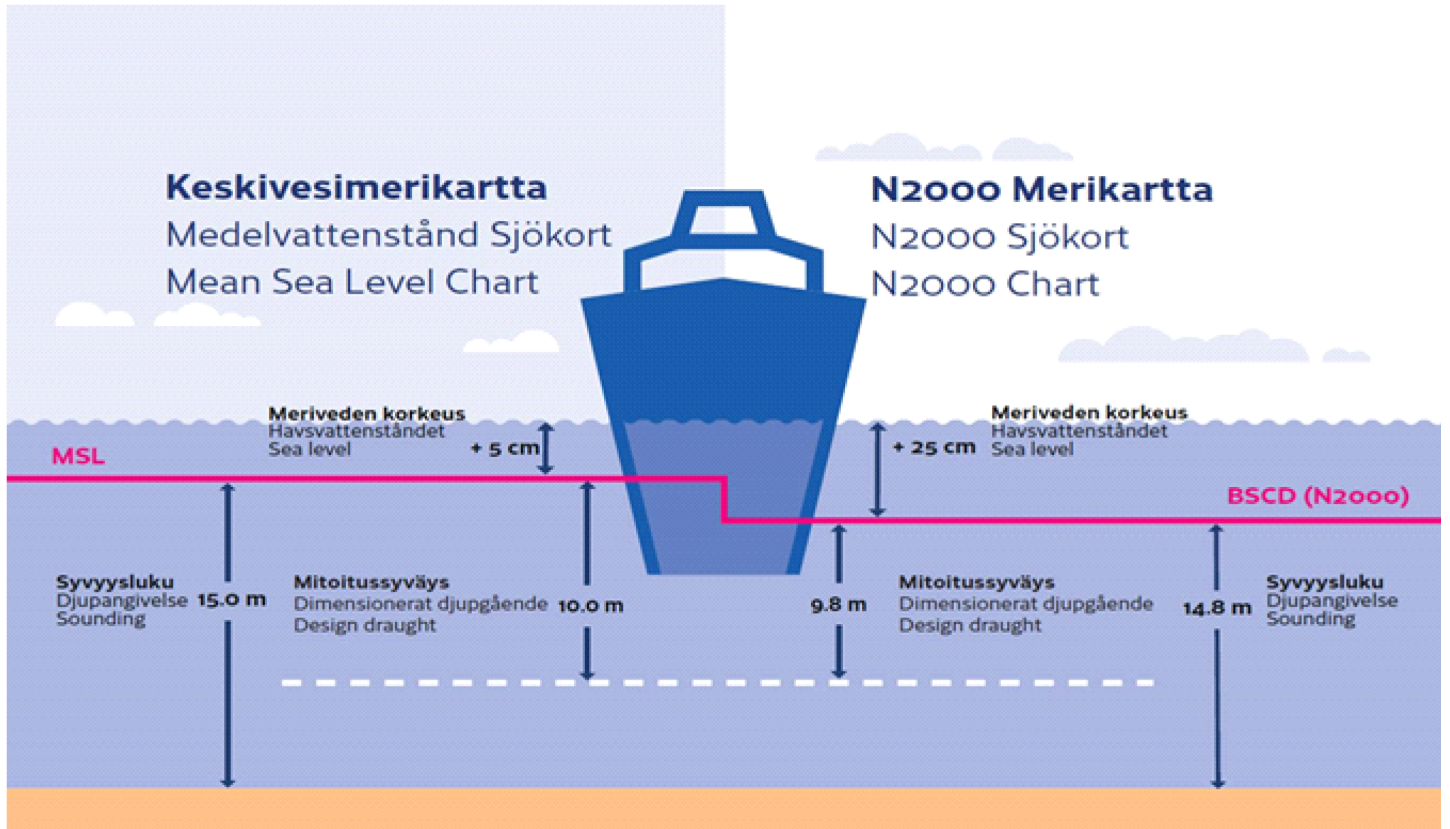
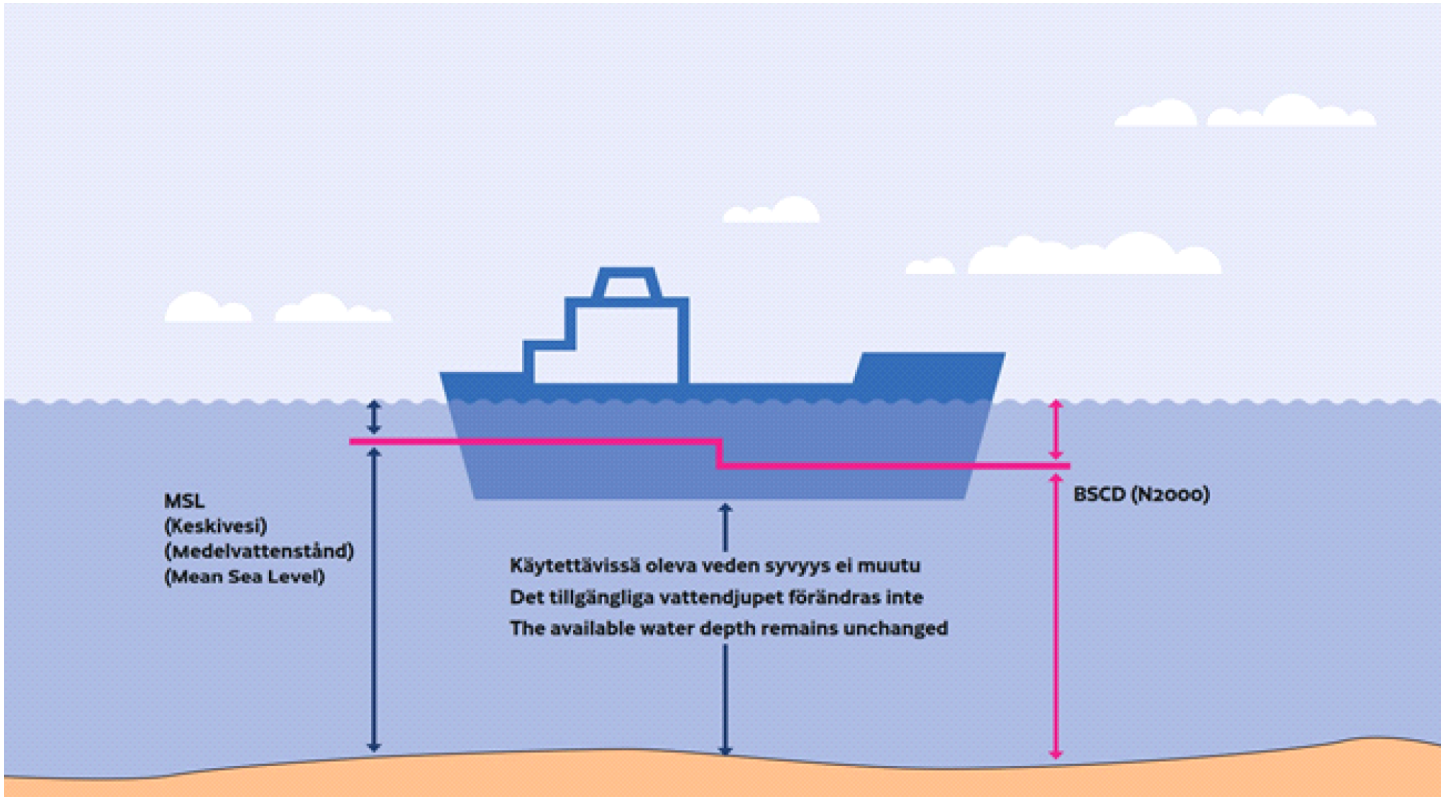
Sailing Directions for Finnish waters:

<https://www.traficom.fi/en/services/sailing-directions-finnish-waters>

Presentation of fairway information on Finnish S-57 ENCs

<https://www.traficom.fi/fi/ajankohtaista/vaylatietojen-esitystapa-muuttuu-suomalaisilla-s-57-enc-kartoilla>.

Fairway usage in commercial shipping: <https://www.traficom.fi/en/transport/maritime/use-fairways-merchant-shipping>



\*288/2025

2025-12-19

## Finland. Sailing Directions for Finnish waters. Channel descriptions of Main approach channels. Main approach channels 2.2.1 - Åland Sea and Archipelago Sea, West.

[Charts](#)

[Previous](#)

References:90/2025 [🔗](#)

---

1

Sailing directions for Finnish water 2.2.1 - Åland Sea and Archipelago Sea, West (New version of publication).

NOTE! The guide's name is changing; this guide replaces the previous version, which was called: 2.2.1 - Archipelago Sea and Åland Sea.

The Finnish Transport and Communications Agency Traficom publishes the nautical charts and nautical publications in Finland. Nautical publications contain information to support the nautical charts. Sailing Directions for Finnish waters consists of a General information part (part 1) and descriptions of the main approach channels (Part 2 – Main approach channels). Part 2 is divided into several volumes. Sailing directions for Finnish waters - Part 1, contains general information, guidelines and links to further information. The channel descriptions include depth- and design-data with general notes on usage of the main approach channels. Sailing directions are published as PDF- documents and provided for free download at: <https://fiho.fi/lnk/sd/en>.

Channel descriptions are published together with the N2000 nautical charts. Volume 2.2.1 - Åland Sea and Archipelago Sea, West, has been published 17 December 2025.

Temporary changes to fairways are not reflected in the Sailing Directions. Mariners should follow the Notices to Mariners and ensure availability of the newest publications including any needed linked material onboard.

<https://www.traficom.fi/en/services/notices-mariners>

(Traficom, Helsinki/Helsingfors 2025)

---

---

\*289/2025

2025-12-19

## Finland. Sailing Directions for Finnish waters. Channel descriptions of Main approach channels. Main approach channels 2.2.0 - Archipelago Sea, East.

[Charts](#)

[Previous](#)

---

1

Sailing directions for Finnish water 2.2.0 - Archipelago Sea, East (New publication).

The Finnish Transport and Communications Agency Traficom publishes the nautical charts and nautical publications in Finland. Nautical publications contain information to support the nautical charts. Sailing Directions for Finnish waters consists of a General information part (part 1) and descriptions of the main approach channels (Part 2 – Main approach channels). Part 2 is divided into several volumes. Sailing directions for Finnish waters - Part 1, contains general information, guidelines and links to further information. The channel descriptions include depth- and design-data with general notes on usage of the main approach channels. Sailing directions are published as PDF- documents and provided for free download at: <https://fiho.fi/lnk/sd/en>.

Channel descriptions are published together with the N2000 nautical charts. Volume 2.2.0 - Archipelago Sea, East, has been published 17 December 2025.

Temporary changes to fairways are not reflected in the Sailing Directions. Mariners should follow the Notices to Mariners and ensure availability of the newest publications including any needed linked material onboard.

\*290/2025

2025-12-19

Finland. Season's Greetings.

[Charts](#)

[Previous](#)

1



# Current Preliminary (P) and Temporary (T) notices (19.12.2025)

## Gulf of Finland

T&P	Charts	Gulf of Finland
174(T)/2019 <a href="#">↗</a>	951	SE of Bol'soj Tjuters. Obstructions
296(T)/2020 <a href="#">↗</a>	17, 18, 191, 952, A, B	Helsinki. Sipoo. Areas and borders
20(T)/2021 <a href="#">↗</a>	951, A	TSS OFF ROOSHER ISLAND. Lighthouse Rodser extinguished. Notice repeated. Buoyage
228(T)/2021 <a href="#">↗</a>	951, A	Krestovyy. Lighthouse Krestovyy extinguished. Notice repeated. Buoyage
65(T)/2022 <a href="#">↗</a>	A, S	Vyborg. Destroyed leading beacon. Notice repeated. Buoyage
66(T)/2022 <a href="#">↗</a>	A, S	Vyborg. Light extinguished. Notice repeated. Buoyage
86(T)/2022 <a href="#">↗</a>	18, 191, 952, A, B	Helsinki. Kruunuvuori. Restrictions on small craft traffic. Fairways
90(T)/2022 <a href="#">↗</a>	951	Tiskolovo. Lighthouse Kajbolovo. Buoyage
230(T)/2023 <a href="#">↗</a>	18, 191, A, B	Helsinki. Hernesaari. Buoyage. Areas and borders
194(T)/2024 <a href="#">↗</a>	18, 191, A, B	Helsinki. Sompasaari. Buoyage
78(T)/2025 <a href="#">↗</a>	15, 16	Loviisa. SE of Lighthouse Tiiskeri. ODAS spar buoy. Buoyage
130(T)/2025 <a href="#">↗</a>	18, 191, A, B	Helsinki. Hernesaari. Notice repeated. Buoyage
176(T)/2025 <a href="#">↗</a>	18, 191, A, B	Helsinki. West Harbour...Restrictions on traffic. Areas and borders
189(T)/2025 <a href="#">↗</a>	952, A, B	Paldiski. Light Pakri extinguished. Buoyage
211(T)/2025 <a href="#">↗</a>	15, 16, 101, 103, 951, A	Loviisa. Valko. Geotechnical seabed surveys. Areas and borders
216(T)/2025 <a href="#">↗</a>	18, 191, A, B	Helsinki. Sompasaari. Nihti. Areas and borders
228(T)/2025 <a href="#">↗</a>	18, 191, 192, A, B	Helsinki. Santahamina. Areas and borders
229(T)/2025 <a href="#">↗</a>	17, 103, A	Porvoo. Kilpilahti. Dredging and excavation. Areas and borders
249(T)/2025 <a href="#">↗</a>	21, B	Raseborg. Ekenäs. (MSL/MW). Obstructions

## Archipelago Sea

T&P	Charts	Archipelago Sea
278(T)/2025 <a href="#">↗</a>	26, 190, D	Port of Turku. Construction works. Notice repeated. Areas and borders
284(T)/2025 <a href="#">↗</a>	26, D	Pargas. Kirjala...Restrictions on traffic. Areas and borders

## Aland Sea

T&P	Charts	Aland Sea
271(T)/2025 <a href="#">↗</a>	32, 160, 756, 757	Mariehamn. West Harbour. Construction works. Areas and borders

## Bothnian Sea

T&P	Charts	Bothnian Sea
6(T)/2025 <a href="#">↗</a>	42, 125	Pori. Tahkoluoto. Notice repeated. Buoyage
165(T)/2025 <a href="#">↗</a>	955	E of Söderhamn. Light Hällgrund extinguished. Buoyage
241(T)/2025 <a href="#">↗</a>	956, 957, 8065	Örnsköldsvik. Ullånger. Lights unlit. Buoyage

## The Quark

T&P	Charts	The Quark
247(T)/2024 <a href="#">↗</a>	48, 820, 956, 957	Vaasa. Johansson. Buoyage
254(T)/2025 <a href="#">↗</a>	47, 48, 822, 956, 957	Buoys and spar buoy temporarily withdrawn for the winter. Virtual AIS. Buoyage
264(T)/2025 <a href="#">↗</a>	47, 825, 956, 957, 8061, 8065	TSS IN NORRA KVARKEN. Buoys and spar buoys temporarily withdrawn for the wint...

## Bay of Bothnia

T&P	Charts	Bay of Bothnia
145(T)/2024 <a href="#">↗</a>	57, 846, 958, 8071	Hailuoto. Bridge construction work. Areas and borders
164(T)/2024 <a href="#">↗</a>	57, 119, 846	Oulu. Pikisaari. Fairways
3(T)/2025 <a href="#">↗</a>	57, 60, 848, 958	Off Oulu. SW of Lighthouse Oulu 1. Lost buoy. Virtual AIS. Buoyage
83(T)/2025 <a href="#">↗</a>	57, 846	Hailuoto. Boating passages at the Riutunkari and Huikku bridges.
117(T)/2025 <a href="#">↗</a>	59, 854	Off Tornio. Maintenance of aids to navigation. Buoyage
257(T)/2025 <a href="#">↗</a>	60, 958	Buoys temporarily withdrawn for the winter. Virtual AIS. Buoyage
266(T)/2025 <a href="#">↗</a>	57, 846	Hailuoto. Boating passages at the Huikku bridge. Areas and borders

## Vuoksi watercourse

T&P	Charts	Vuoksi watercourse
64(T)/2025 <a href="#">↗</a>	L	Lappeenranta. Muukonsaari. Buoyage
72(T)/2025 <a href="#">↗</a>	M	Varkaus. Kortesaaret. Buoyage

## Kymijoki watercourse

T&P	Charts	Kymijoki watercourse
-	-	

## Kokemäijoki watercourse

T&P	Charts	Kokemäijoki watercourse
-	-	

## Oulujoki watercourse

T&P	Charts	Oulujoki watercourse
-	-	

## Paatsjoki watercourse

T&P	Charts	Paatsjoki watercourse
-	-	

## Saimaa Canal

T&P	Charts	Saimaa Canal
247(T)/2025 <a href="#">↗</a>		Saimaa Canal closed for the winter season.

## Northern Baltic

T&P	Charts	Northern Baltic
11(T)/2024 <a href="#">↗</a>	952, 953, 954	Hiiumaa. Tahkuna. Light Lehtma extinguished. Buoyage
259(T)/2025 <a href="#">↗</a>	952, 953, 954	Hiiumaa. Lehtma. Withdrawn pilot boarding place. Pilotage

## Announcements

T&P	Charts	Announcements
137(T)/2023 <a href="#">↗</a>		Helsinki. Korkeasaari...Restrictions on small craft traffic
102(T)/2024 <a href="#">↗</a>		Pargas. Hessund. Bridge construction work.
251(T)/2025 <a href="#">↗</a>		Archipelago Sea. Naval exercise Freezing Winds 25.