



Notices to Mariners

NtM 3/2025

Notices: 12 - 18 / 31.01.2025



Table of Contents

Title	Page
Index by Area	2
Index by Chart	3
Gulf of Finland	4
The Quark	7
Bay of Bothnia	9
Vuoksi watercourse	10
Current Preliminary (P) and Temporary (T) notices (31.01.2025)	12

Index by Area

Gulf of Finland

Charts

*12/2025	18, 952, A, B
*13/2025	14, 138, 951, A
*14/2025	14, 138, A
*15/2025	14, A

The Quark

Charts

16(T)/2025	47, 825, 956, 957, 8065
------------	-------------------------

Bay of Bothnia

Charts

*17/2025	55, 119, 838, 839, 958, 8071
----------	------------------------------

Vuoksi watercourse

Charts

*18/2025	L
----------	---

Index by Chart

Charts	Notices
14	*13/2025, *14/2025, *15/2025
18	*12/2025
47	16(T)/2025
55	*17/2025
119	*17/2025
138	*13/2025, *14/2025
825	16(T)/2025
838	*17/2025
839	*17/2025
951	*13/2025
952	*12/2025
956	16(T)/2025
957	16(T)/2025
958	*17/2025
8065	16(T)/2025
8071	*17/2025
A	*12/2025, *13/2025, *14/2025, *15/2025
B	*12/2025
L	*18/2025

Gulf of Finland

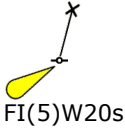
*12/2025

2025-01-31

Finland. Gulf of Finland. SW of Helsinginmatala. Withdrawn ODAS spar buoy. Buoyage

Charts		Previous
18	(INT 1250)	284/2024 ↗
952		2/2025 ↗
A/Helsinki - Tallinna		8/2025 ↗
B/Helsinki - Tallinn		4/2025 ↗

Cancelled: 80(T)/2024 [↗](#)

1	18, 952, A/Helsinki - Tallinna, B/Helsinki - Tallinn		
Delete		59°53.05'N	24°46.72'E

(Suomen ympäristökeskus/Finlands miljöcentral/Finnish Environment Institute, 2025)


*13/2025

2025-01-31

Finland. Gulf of Finland. Kotka. Mussalo. Ports

Charts		Previous
14	(INT 1246)	8/2025 ↗
138	(INT 1155)	8/2025 ↗
951		276/2024 ↗
A610, A611		12/2025 ↗

References:9/2020 [↗](#), 8/2025 [↗](#)

1	14, 138, 951, A610, A611		
Amend	 Amended shoreline. See image.	60°25.10'N	26°53.95'E

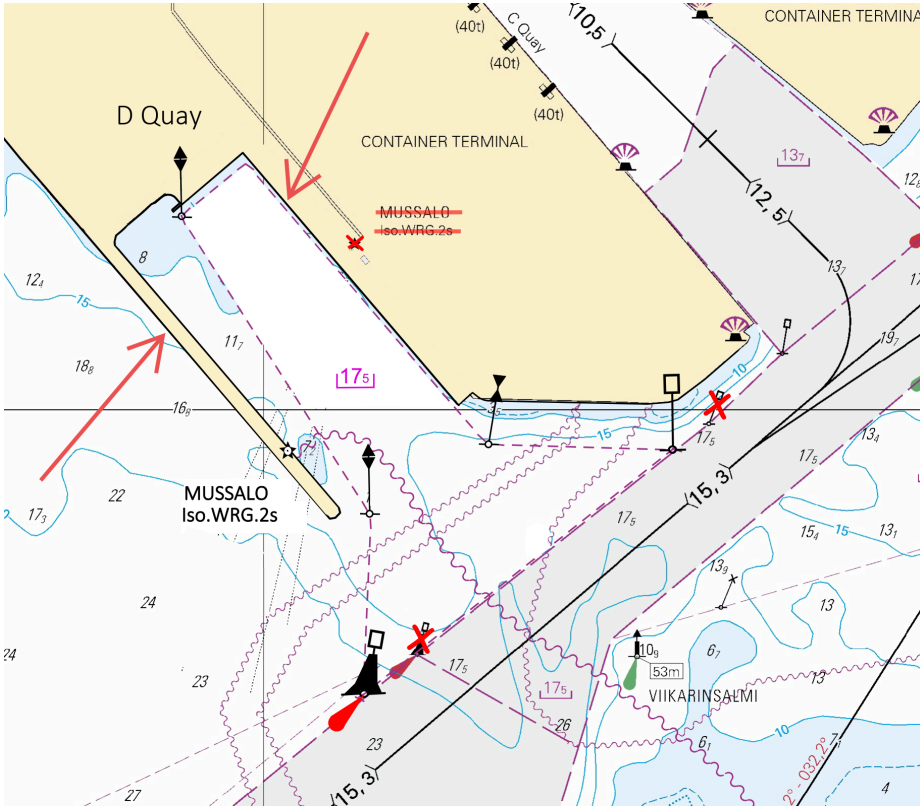


Image for reference, chart extracts not to scale of chart.

(Traficom, Helsinki/Helsingfors 2025)

*14/2025

2025-01-31

Finland. Gulf of Finland. Kotka. Mussalo. Cables and pipelines

Charts		Previous
14	(INT 1246)	13/2025 ↗
138	(INT 1155)	13/2025 ↗
A610, A610.1, A611		13/2025 ↗

References: [9/2020 ↗](#), [8/2025 ↗](#), [13/2025 ↗](#)

1 14, 138, A610, A610.1, A611

Add

Between the following positions:

- (1) 60°24.957'N 26°54.055'E
- (2) 60°24.980'N 26°54.112'E
- (3) 60°24.979'N 26°54.155'E
- (4) 60°24.967'N 26°54.194'E
- (5) 60°24.813'N 26°54.450'E
- (6) 60°24.626'N 26°54.912'E
- (7) 60°24.517'N 26°54.889'E
- (8) 60°24.415'N 26°55.164'E
- (9) 60°24.434'N 26°55.363'E
- (10) 60°24.447'N 26°55.401'E

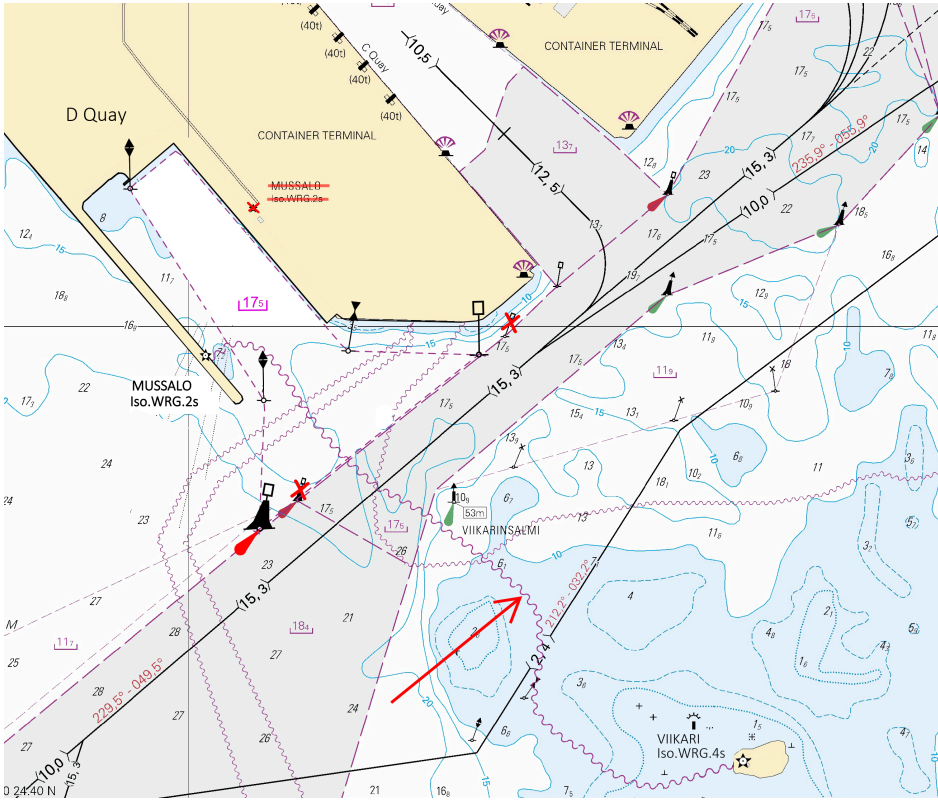


Image for reference, chart extracts not to scale of chart.

(Väylävirasto/Trafikledsverket/Finnish Transport Infrastructure Agency, 2025)

***15/2025** **2025-01-31**
Finland. Gulf of Finland. Hamina. Vehkaluoto. Depths

Charts	Previous
14	(INT 1246) 14/2025 ↗
A609, A610	14/2025 ↗

1	14, A609, A610			
Delete	1_6	Correct 10 m depth contour	60°27.137'N	27°06.286'E

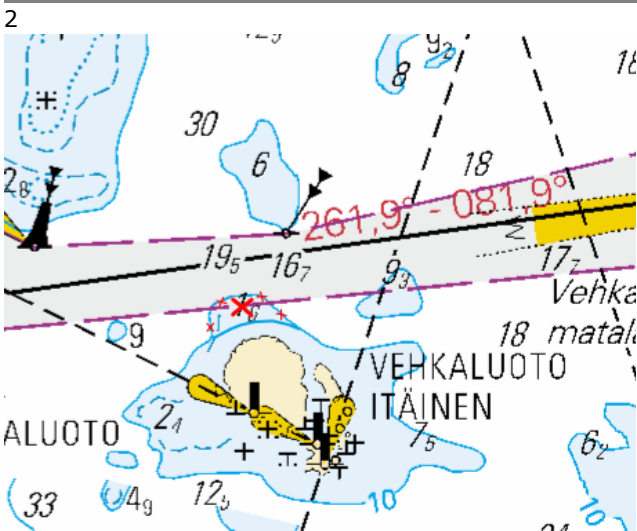


Image for reference, chart extracts not to scale of chart.

(Traficom, Helsinki/Helsingfors 2025)

The Quark

16(T)/2025

2025-01-31

Sweden. The Quark. Buoyage reinstated after the winter season. Buoyage

Charts		Previous
47	(INT 1138)	269/2024 ↗
825		263/2024 ↗
956		269/2024 ↗
957	(INT 1208)	279/2024 ↗
8065/Vaasa - Uumaja		279/2024 ↗

Time: Until further notice

1		47, 956, 957, 8065/Vaasa - Uumaja		
Amend			V-AIS	63°25.53'N 20°33.93'E
2		47, 957, 8065/Vaasa - Uumaja		
Delete				63°28.129'N 20°37.926'E
3		47, 957, 8065/Vaasa - Uumaja		
Delete				63°32.240'N 20°41.088'E
4		47, 825, 957, 8065/Vaasa - Uumaja		
Delete				63°31.182'N 20°43.770'E
5		47, 825, 957, 8065/Vaasa - Uumaja		
Delete				63°32.708'N 20°45.376'E
6		47, 825, 957, 8065/Vaasa - Uumaja		
Delete				63°32.288'N 20°46.247'E
7		47, 825, 957, 8065/Vaasa - Uumaja		
Amend			V-AIS	63°32.89'N 20°51.03'E

8

47, 825, 957, 8065/Vaasa - Uumaja

Delete



63°33.499'N

20°52.351'E

9

47, 825, 957, 8065/Vaasa - Uumaja

Delete



63°35.403'N

21°03.326'E

(Ufs 1051/19025(T), Norrköping 2025)

Bay of Bothnia

*17/2025


2025-01-31

Finland. Bay of Bothnia. Raahe. Light Heikinkari in operation. Buoyage

Charts		Previous
55	(INT 1146)	232/2024 ↗
119.A	(INT 11461)	214/2024 ↗
838		231/2024 ↗
839		231/2024 ↗
958	(INT 1209)	10/2025 ↗
8071/INDEX		264/2024 ↗

References:111/2024 [↗](#)

Cancelled: 263(T)/2023 [↗](#)

1	55, 119.A, 838, 839, 958, 8071/INDEX		
Amend		Front	
	HEIKINKARI Fl.3s (exting) Racon (T)	→	HEIKINKARI Fl.3s Racon (T)
			64°39.053'N 24°20.929'E 9189, (C4184)

(Traficom, Helsinki/Helsingfors 2025)

Vuoksi watercourse

*18/2025

2025-01-31





Finland. Vuoksi watercourse. Mikkeli. Juva. Pihlajasalo. Cables and pipelines

Charts

L211, L211.1

Previous

265/2024 [↗](#)

1	L211		(1) 61°39.912'N 27°46.013'E
Add 	Between the following positions:	(2) 61°39.938'N 27°46.154'E	
		(3) 61°39.959'N 27°46.946'E	
		(4) 61°39.949'N 27°47.013'E	
2	L211		(1) 61°40.303'N 27°46.666'E
Add 	Between the following positions:	(2) 61°40.263'N 27°46.745'E	
		(3) 61°40.231'N 27°47.000'E	
		(4) 61°40.255'N 27°47.483'E	
3	L211		(1) 61°42.018'N 27°51.232'E
Add 	Between the following positions:	(2) 61°41.981'N 27°51.309'E	
		(3) 61°41.964'N 27°51.427'E	
4	L211, L211.1		(1) 61°43.653'N 27°47.582'E
Add 	Between the following positions:	(2) 61°43.669'N 27°47.666'E	

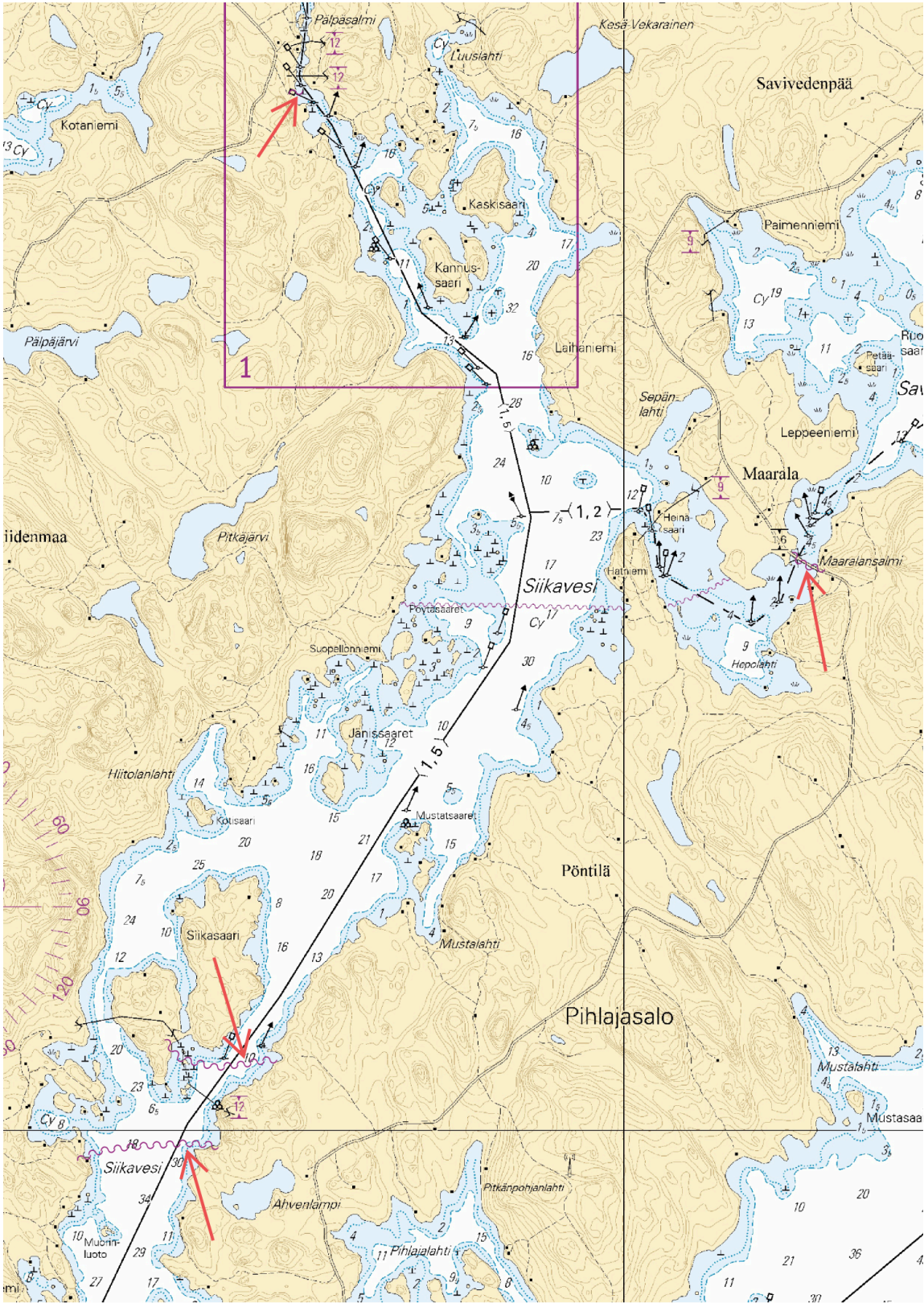


Image for reference, chart extracts not to scale of chart.

(Suur-Savon Sähkö Oy, 2025)

Current Preliminary (P) and Temporary (T) notices (31.01.2025)

Gulf of Finland

T&P	Charts	Gulf of Finland
174(T)/2019 ↗	951	SE of Bol'soj Tjuters. Obstructions
296(T)/2020 ↗	17, 18, 191, 952, A, B	Helsinki. Sipoo. Areas and borders
20(T)/2021 ↗	951, A	TSS OFF ROOSHER ISLAND. Lighthouse Rodser extinguished. Notice repeated. Buoyage
228(T)/2021 ↗	951, A	Krestovj. Lighthouse Krestovj extinguished. Notice repeated. Buoyage
304(T)/2021 ↗	18, 192, A, B	Helsinki. Vuosaari. Notice repeated. Buoyage. Areas and borders
65(T)/2022 ↗	A, S	Vyborg. Destroyed leading beacon. Notice repeated. Buoyage
66(T)/2022 ↗	A, S	Vyborg. Light extinguished. Notice repeated. Buoyage
86(T)/2022 ↗	18, 191, 952, A, B	Helsinki. Kruunuvuori. Restrictions on small craft traffic. Fairways
90(T)/2022 ↗	951	Tiskolovo. Lighthouse Kajbolovo. Buoyage
229(T)/2023 ↗	18, 191, A, B	Helsinki. Hernesaari. Buoyage
230(T)/2023 ↗	18, 191, A, B	Helsinki. Hernesaari. Buoyage. Areas and borders
52(T)/2024 ↗	952, A, B	Prangli. Kelnase. Construction works. Areas and borders
194(T)/2024 ↗	18, 191, A, B	Helsinki. Sompasaari. Buoyage
230(T)/2024 ↗	18, 191, A, B	Helsinki. Melkki. Light Melkki extinguished. Buoyage
238(T)/2024 ↗	17, 952, A	Off Porvoo. Lighthouse Porvoon majakka unlit. Buoyage
284(T)/2024 ↗	18, 191, A, B	Helsinki. Hakaniemi. Bridge construction work. Areas and borders

Archipelago Sea

T&P	Charts	Archipelago Sea
189(T)/2023 ↗	26, D	Pargas. Kirjala...Restrictions on traffic. Areas and borders
40(T)/2024 ↗	26, 190, D	Naantali. Raumakari. Särkänsalmi. Kirkonsalmi. Notice repeated. Buoyage
74(T)/2024 ↗	27, 167, D	Pargas. S of Utö. ODAS buoy. Buoyage
130(T)/2024 ↗	27, D	Pargas. S of Utö. ODAS buoy. Buoyage
168(T)/2024 ↗	25, 26, 37, D	Pargas. Seili. ODAS buoy. Buoyage
239(T)/2024 ↗	27, 167, D	S of Utö. Söderdjupet. Measuring equipment on seabed. Areas and borders
250(T)/2024 ↗	26, D	Pargas. Hessund...Restrictions on traffic. Areas and borders
267(T)/2024 ↗	26, 190, D	Port of Turku. Construction works. Areas and borders
4(T)/2025 ↗	23, B	Kimitoön. Padva. Light Padvagrundet extinguished. Buoyage
5(T)/2025 ↗	28, C	Sottunga. Light Bogskär extinguished. Buoyage

Aland Sea

T&P	Charts	Aland Sea
97(T)/2024 ↗	32, 160, C	Mariehamn. Lemströms canal...Restrictions on traffic. Areas and borders
155(T)/2024 ↗	31, 935, C	TSS SOUTH ÅLAND SEA. Light Flötjan extinguished. Buoyage

Bothnian Sea

T&P	Charts	Bothnian Sea
30(T)/2022 ↗	41, 127, E	Rauma. Ulko-Petäjäs. Areas and borders
95(T)/2024 ↗	42, 125, 955, E	Pori. Tahkoluoto. Lighthouse Kaijakari extinguished. Buoyage
121(T)/2024 ↗	45, 46, 815, 816	Korsnäs. Measuring equipment on seabed. Obstructions
6(T)/2025 ↗	42, 125	Pori. Tahkoluoto. Notice repeated. Buoyage

The Quark

T&P	Charts	The Quark
238(T)/2022 ↗	48, 115, 921, F, M	Vaasa. Vaskiluoto. Notice repeated. Buoyage
126(T)/2023 ↗	48, 115, 820	Vaasa. Vaskiluoto. Dredging operations. Areas and borders
256(T)/2023 ↗	48, 115, 820	Vaasa. Vaskiluoto. Dredging operations. Notice repeated. Areas and borders
62(T)/2024 ↗	48, 819, 822, 956, 957, 8061, 8065	Korsholm. W of Replot. Lighthouse Vaasan Majakka extinguished. Buoyage
247(T)/2024 ↗	48, 820, 956, 957	Vaasa. Johansson. Buoyage
262(T)/2024 ↗	48, 115, 820	Vaasa. Vaskiluoto. (N2000) (BSCD2000). Buoyage. Fairway areas
279(T)/2024 ↗	48, 115, 820, 957, 8061, 8065	Vaasa. Vaskiluoto. Buoyage. Fairway areas
16(T)/2025 ↗	47, 825, 956, 957, 8065	Buoyage reinstated after the winter season. Buoyage

Bay of Bothnia

T&P	Charts	Bay of Bothnia
144(T)/2024 ↗	57, 846	Oulu. Pajuniemi. Buoyage
145(T)/2024 ↗	57, 846, 958, 8071	Hailuoto. Bridge construction work. Areas and borders
164(T)/2024 ↗	57, 119, 846	Oulu. Pikisaari. Fairways
197(T)/2024 ↗	57, 119, 845, 846	Oulu. Port of Oulu. Dredging operations. Areas and borders
270(T)/2024 ↗	57, 846	Hailuoto. Channel section closed for the winter season. Areas and borders
3(T)/2025 ↗	57, 60, 848, 958	Off Oulu. SW of Lighthouse Oulu 1. Lost buoy. Virtual AIS. Buoyage
7(T)/2025 ↗	60	Kemi. NE of Lighthouse Kemi 1...Winter break. Areas and borders

Vuoksi watercourse

T&P	Charts	Vuoksi watercourse
268(T)/2019 ↗	M	Kuopio. Kotkatniemi. Buoyage
214(T)/2020 ↗		Leppävirta. Hyvärilä. Buoyage
90(T)/2023 ↗	921, M	Kuopio. Light Sotkanselkä operational. Notice repeated. Buoyage

Kymijoki watercourse

T&P	Charts	Kymijoki watercourse
-	-	

Kokemäijoki watercourse

T&P	Charts	Kokemäijoki watercourse
-	-	

Oulujoki watercourse

T&P	Charts	Oulujoki watercourse
-	-	

Paatsjoki watercourse

T&P	Charts	Paatsjoki watercourse
-	-	

Saimaa Canal

T&P	Charts	Saimaa Canal
254(T)/2024 ↗		Saimaa Canal closed for the winter season.

Northern Baltic

T&P	Charts	Northern Baltic
11(T)/2024 ↗	952, 953, 954	Hiiumaa. Tahkuna. Light Lehtma extinguished. Buoyage

Announcements

T&P	Charts	Announcements
291(T)/2022 ↗		Bay of Bothnia. Off Oulu. V-AIS. Notice repeated.
137(T)/2023 ↗		Helsinki. Korkeasaari...Restrictions on small craft traffic
102(T)/2024 ↗		Pargas. Hessund. Bridge construction work.