



# Notices to Mariners

## NtM 4/2025

Notices: 19 - 28 / 10.02.2025



# Table of Contents

Title	Page
Index by Area	2
Index by Chart	3
Gulf of Finland	4
Archipelago Sea	6
Bothnian Sea	9
Announcements	11
Current Preliminary (P) and Temporary (T) notices (10.02.2025)	13

# Index by Area

## **Gulf of Finland**

## **Charts**

*21(T)/2025	951, 952
22/2025	952, A, B

## **Archipelago Sea**

## **Charts**

*23/2025	23, B
*24/2025	28, C
*25/2025	27, 167, 953, 954, C, D
*26/2025	28, 953, 954, C, D

## **Bothnian Sea**

## **Charts**

*19/2025	125, 808
*27/2025	42, 125, 808, 809

## **Announcements**

## **Charts**

20/2025
*28/2025

# Index by Chart

<b>Charts</b>	<b>Notices</b>
23	*23/2025
27	*25/2025
28	*24/2025, *26/2025
42	*27/2025
125	*19/2025, *27/2025
167	*25/2025
808	*19/2025, *27/2025
809	*27/2025
951	*21(T)/2025
952	*21(T)/2025, 22/2025
953	*25/2025, *26/2025
954	*25/2025, *26/2025
A	22/2025
B	22/2025, *23/2025
C	*24/2025, *25/2025, *26/2025
D	*25/2025, *26/2025

# Gulf of Finland

\*21(T)/2025

2025-02-05

Finland. Gulf of Finland. E of lighthouse Kallbådagrund. Areas and borders

## Charts

951  
952

## Previous

13/2025 [↗](#)  
12/2025 [↗](#)

Time: 11 February - to approx. 28 February 2025

1  
The vessel C/S Pleijel is performing cable service works in area E of lighthouse Kallbådagrund. The call sign of the vessel Pleijel is SMWY. The vessel monitor VHF channels 16 and 72. MMSI:265098000

The vessel requests a minimum clearance of 1NM. The area is marked with virtual AIS broadcast (V-AIS ATON, special marks).

More information: GSM tel: 46 480 420417, 46 70270 5013, pleijel@balticoffshore.se

2 951, 952

Add 

Between the following positions:

- (1) 59°57.055'N 26°05.143'E
- (2) 59°56.807'N 26°06.234'E
- (3) 59°57.103'N 26°06.496'E
- (4) 59°57.338'N 26°05.428'E

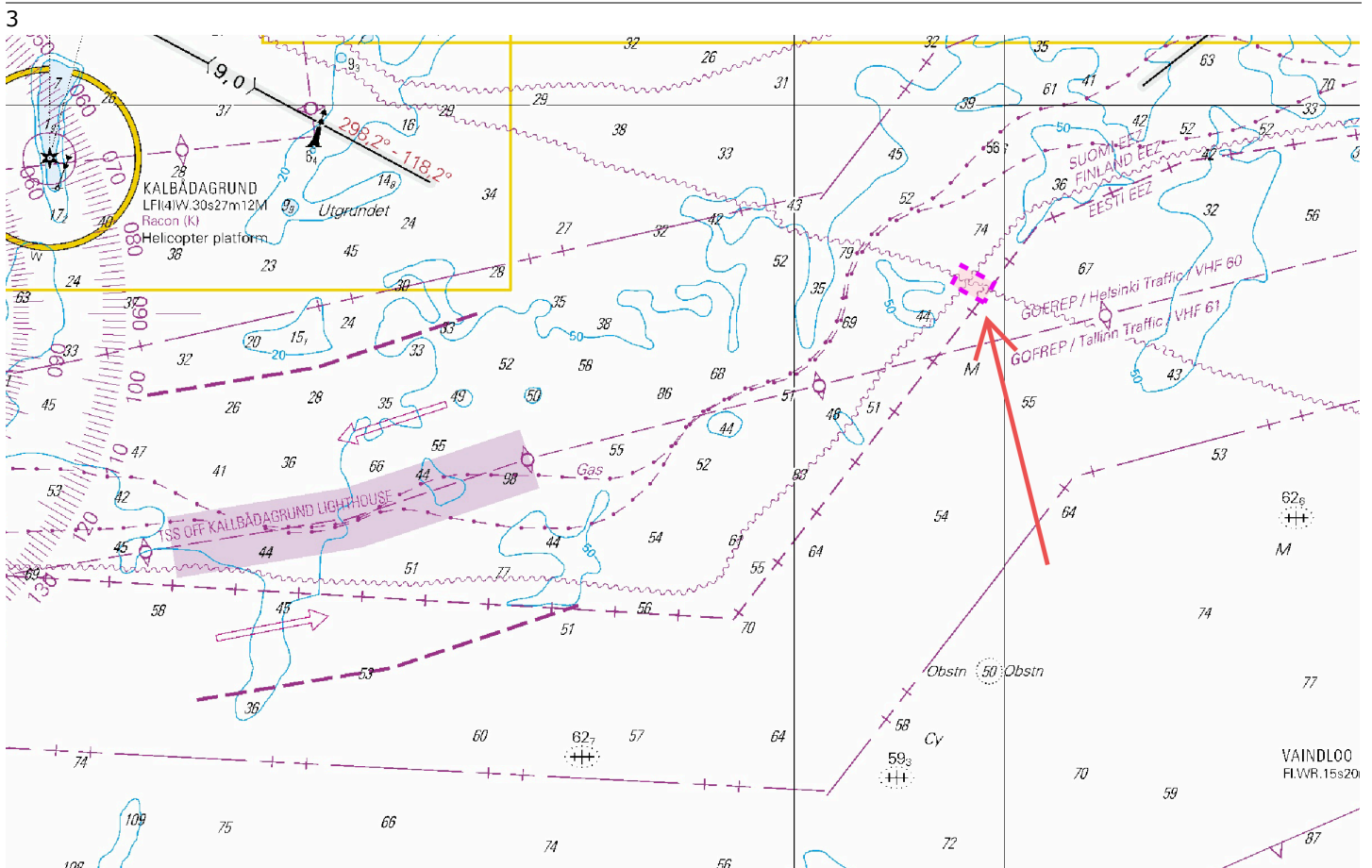


Image for reference, chart extracts not to scale of chart.

(Traficom, Helsinki/Helsingfors 2025)

22/2025

2025-02-10

Estonia. Gulf of Finland. Prangli. Kelnase. Operations completed. Areas and borders

Charts	Previous
952	21/2025 <a href="#">↗</a>
A/Helsinki - Tallinna	15/2025 <a href="#">↗</a>
B/Helsinki - Tallinn	12/2025 <a href="#">↗</a>

Cancelled: 52(T)/2024 [↗](#)

---

1	952, A/Helsinki - Tallinna, B/Helsinki - Tallinn
Delete	59°38.29'N 25°00.85'E
Attention Area	

(NtM 2/024, Tallinn 2025)

---

---

# Archipelago Sea

\*23/2025




2025-02-10

Finland. Archipelago Sea. Kimitoön. Padva. Light Padvagrundet operational. Buoyage

Charts		Previous
23	(INT 1186)	4/2025 <a href="#">↗</a>
B639		22/2025 <a href="#">↗</a>

Cancelled: 4(T)/2025 [↗](#)

---

1		23, B639				
Amend			Sector light			
	PADVAGRUNDET	PADVAGRUNDET		59°59.00'N	22°46.80'E	20450, C4869.08
	Q(2)WRG.6s (exting)	Q(2)WRG.6s				

(Traficom, Helsinki/Helsingfors 2025)

---

---

\*24/2025

2025-02-10

Finland. Archipelago Sea. Sottunga. Light Bogskär operational. Buoyage

Charts		Previous
28	(INT 1191)	5/2025 <a href="#">↗</a>
C740		5/2025 <a href="#">↗</a>

Cancelled: 5(T)/2025 [↗](#)

---

1		28, C740				
Amend			Sector light			
	BOGSKÄR	BOGSKÄR		60°04.54'N	20°55.50'E	6292, (C4628)
	FI.WRG.5s (exting)	FI.WRG.5s				

(Traficom, Helsinki/Helsingfors 2025)

---

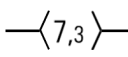
---


\*25/2025

2025-02-10

Finland. Archipelago Sea. Pargas. Fregattgrund. (MSL/MW). Fairways.  
Fairway areas

Charts		Previous
27	(INT 1190)	271/2024 <a href="#">↗</a>
167	(INT 11901)	239/2024 <a href="#">↗</a>
953		271/2024 <a href="#">↗</a>
954	(INT 1210)	271/2024 <a href="#">↗</a>
C714		24/2025 <a href="#">↗</a>
D714, D715, D/Utö - Turku		285/2024 <a href="#">↗</a>

1	27, 167, 953, 954, C714, D714, D715, D/Utö - Turku		
Add		Between the following positions:	(1) 59°49.269'N 21°21.186'E
		Delete former centre line	(2) 59°49.269'N 21°22.581'E
			(3) 59°49.328'N 21°23.074'E

2	27, 167, 953, 954, C714, D714, D715, D/Utö - Turku		
Add		Between the following positions:	(1) 59°49.216'N 21°21.501'E
			(2) 59°49.215'N 21°22.594'E
			(3) 59°49.275'N 21°23.098'E
			(4) 59°49.380'N 21°23.049'E
			(5) 59°49.323'N 21°22.569'E
			(6) 59°49.323'N 21°21.688'E
			(7) 59°49.216'N 21°21.501'E

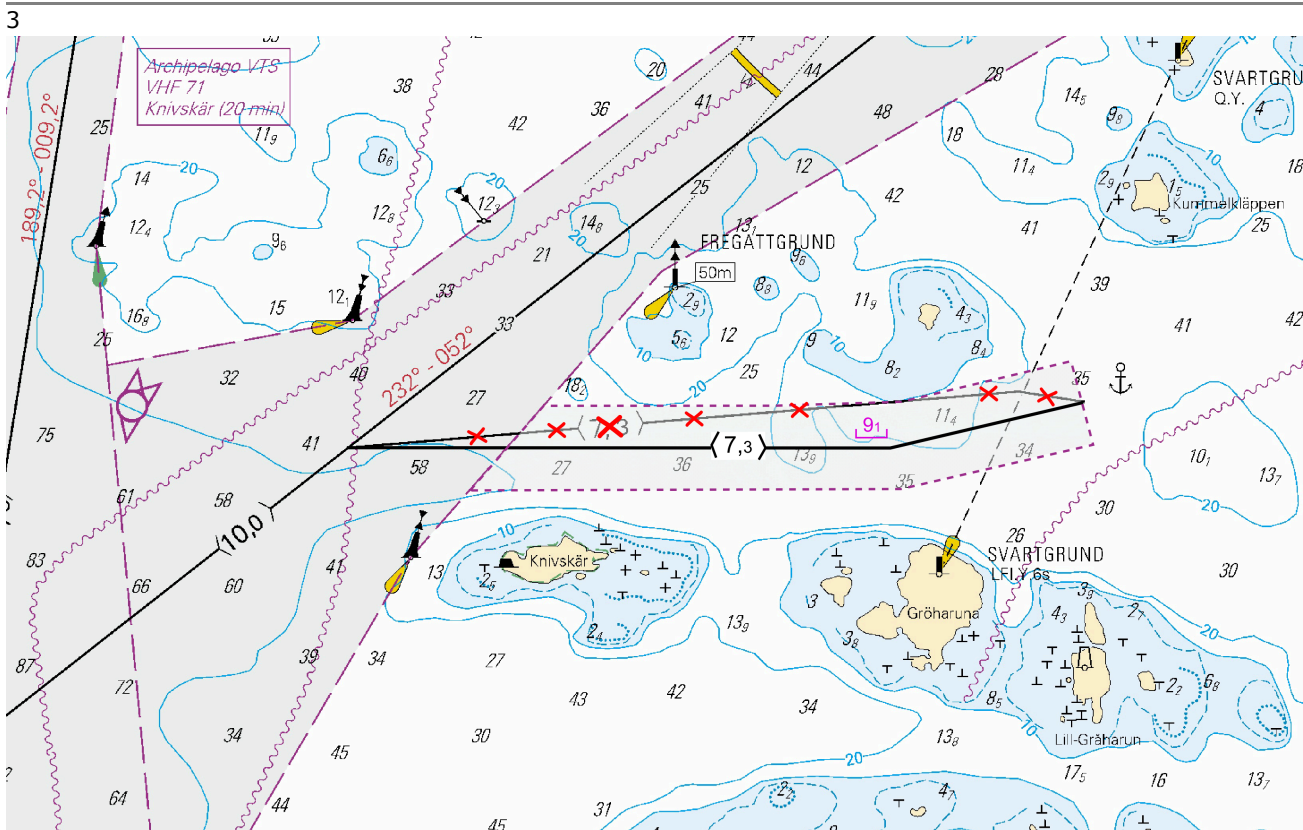


Image for reference, chart extracts not to scale of chart.

(Traficom, Helsinki/Helsingfors 2025)

\*26/2025

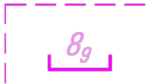
2025-02-10

Finland. Archipelago Sea. Kökar. Skiftet. Gåsskär. (MSL/MW). Fairway areas

Charts		Previous
28	(INT 1191)	24/2025 <a href="#">↗</a>
953		25/2025 <a href="#">↗</a>
954	(INT 1210)	25/2025 <a href="#">↗</a>
C730, C740		25/2025 <a href="#">↗</a>
D730, D/Utö - Turku		25/2025 <a href="#">↗</a>

1 28, 953, 954, C730, C740, D730, D/Utö - Turku

Add



Between the following positions:

- (1) 60°00.684'N 21°05.378'E
- (2) 60°01.004'N 21°04.843'E
- (3) 60°03.761'N 21°01.166'E
- (4) 60°03.656'N 21°00.449'E
- (5) 60°00.639'N 21°04.381'E
- (6) 60°00.354'N 21°04.854'E
- (7) 60°00.684'N 21°05.378'E

2

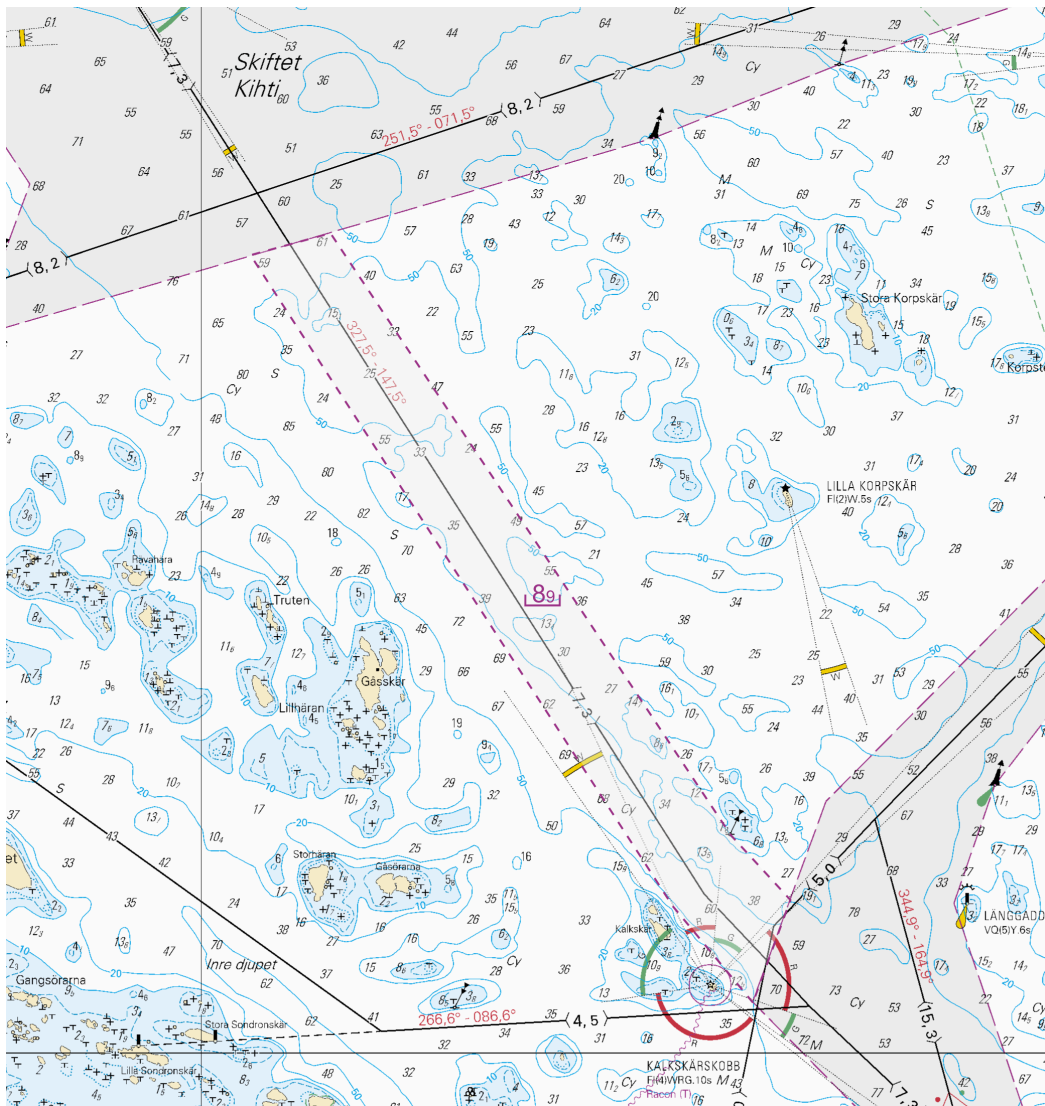


Image for reference, chart extracts not to scale of chart.

# Bothnian Sea

\*19/2025

2025-01-31

Finland. Bothnian Sea. Pori. Mäntyluoto. Fairway areas

### Charts

125

(INT 1151)

### Previous

6/2025 [↗](#)

808.A

248/2024 [↗](#)

References: 248/2024 [↗](#)

1 125, 808.A

Amend

**10<sub>9</sub>**



**10<sub>8</sub>**

61°35.75'N

21°28.16'E

2 125, 808.A

Add

Between the following positions:

(1) 61°35.681'N 21°28.210'E

Delete former edge line

(2) 61°35.698'N 21°28.293'E

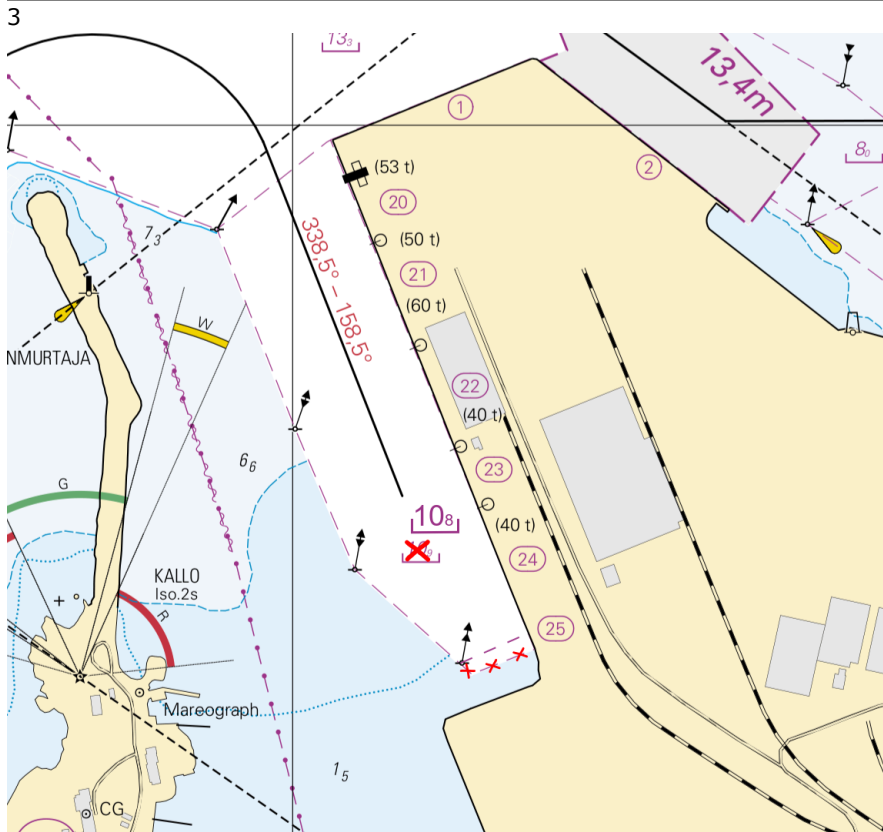


Image for reference, chart extracts not to scale of chart.

(Traficom, Helsinki/Helsingfors 2025)

\*27/2025

2025-02-10

Finland. Bothnian Sea. Pori. Mäntyluoto. Ports

Charts		Previous
42	(INT 1133)	6/2025 <a href="#">↗</a>
125	(INT 1151)	19/2025 <a href="#">↗</a>
808, 808.A		19/2025 <a href="#">↗</a>
809		248/2024 <a href="#">↗</a>

References: [19/2025](#) [↗](#)

---

1	42, 125, 808, 808.A, 809		
Amend	Amended shoreline. See image	61°35.67'N	21°28.27'E

---

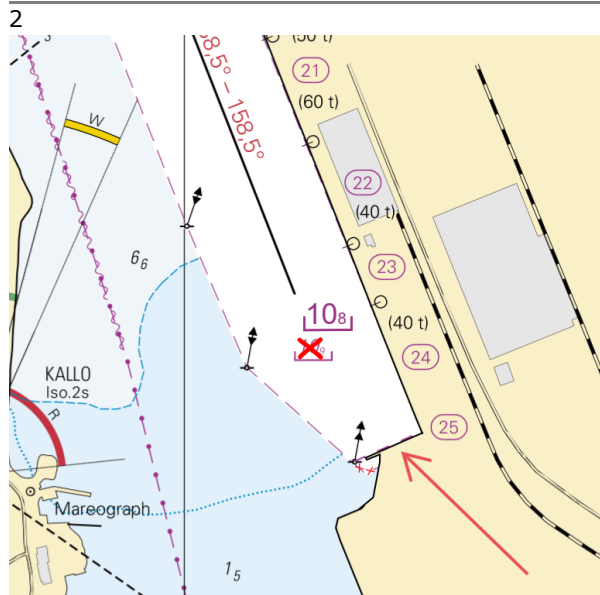


Image for reference, chart extracts not to scale of chart.

(Traficom, Helsinki/Helsingfors 2025)

---

---

# Announcements

20/2025

2025-02-04

Finland. Baltic Sea. Information from NATO Shipping Centre.

**Charts**

**Previous**

---

1

There has been damage to seabed infrastructure in the Baltic Sea region. For this reason, the NATO Shipping Centre wishes to receive information from vessels in the area that observe behavior that deviates from normal traffic.

Vessels observing incidents or behavior that could lead to damage to infrastructure are asked to contact the NATO Shipping Centre.

Contact details below:

\* <https://shipping.nato.int>

\* Phone: 44 1923 956574

\* E-mail: [info@shipping.nato.int](mailto:info@shipping.nato.int)

E-mail should include

- a) Name and flag state of reporting vessel
- b) Telephone number to reporting vessel
- c) Position, date and time of the observed incident
- d) As detailed information about the observed incident as possible
- e) If possible, attach pictures, recordings, screenshots from ECDIS/Radar

Reporting of this kind will not in any way cause any delays in voyage or other inconveniences.

(NATO Shipping Centre, 2025 (Ufs 1052/19056, Norrköping 2025))

---

---


\*28/2025

2025-02-10

Finland. Sailing Directions for Finnish waters. Channel descriptions of Main approach channels. Main approach channels 2.3.1 - Sea of Bothnia.

**Charts**

**Previous**

References: [243/2024](#) 

---

1

Sailing directions for Finnish water 2.3.1 - Sea of Bothnia (New versions of publications).

The Finnish Transport and Communications Agency Traficom publishes the nautical charts and nautical publications in Finland. Nautical publications contain information to support the nautical charts. Sailing Directions for Finnish waters consists of a General information part (part 1) and descriptions of the main approach channels (Part 2 – Main approach channels). Part 2 is divided into several volumes. Sailing directions for Finnish waters - Part 1, contains general information, guidelines and links to further information. The channel descriptions include depth- and design-data with general notes on usage of the main approach channels. Sailing directions are published as PDF- documents and provided for free download at: <https://fiho.fi/lnk/sd/en>.

Channel descriptions are published together with the N2000 nautical charts. Volume 2.3.1 - Sea of Bothnia, has been published 3 February 2025.

Temporary changes to fairways are not reflected in the Sailing Directions. Mariners should follow the Notices to Mariners and ensure availability of the newest publications including any [linked material](#) onboard.



# Current Preliminary (P) and Temporary (T) notices (10.02.2025)

## Gulf of Finland

T&P	Charts	Gulf of Finland
174(T)/2019 <a href="#">↗</a>	951	SE of Bol'soj Tjuters. Obstructions
296(T)/2020 <a href="#">↗</a>	17, 18, 191, 952, A, B	Helsinki. Sipoo. Areas and borders
20(T)/2021 <a href="#">↗</a>	951, A	TSS OFF ROOSHER ISLAND. Lighthouse Rodser extinguished. Notice repeated. Buoyage
228(T)/2021 <a href="#">↗</a>	951, A	Krestovyy. Lighthouse Krestovyy extinguished. Notice repeated. Buoyage
304(T)/2021 <a href="#">↗</a>	18, 192, A, B	Helsinki. Vuosaari. Notice repeated. Buoyage. Areas and borders
65(T)/2022 <a href="#">↗</a>	A, S	Vyborg. Destroyed leading beacon. Notice repeated. Buoyage
66(T)/2022 <a href="#">↗</a>	A, S	Vyborg. Light extinguished. Notice repeated. Buoyage
86(T)/2022 <a href="#">↗</a>	18, 191, 952, A, B	Helsinki. Kruunuvuori. Restrictions on small craft traffic. Fairways
90(T)/2022 <a href="#">↗</a>	951	Tiskolovo. Lighthouse Kajbolovo. Buoyage
229(T)/2023 <a href="#">↗</a>	18, 191, A, B	Helsinki. Hernesaari. Buoyage
230(T)/2023 <a href="#">↗</a>	18, 191, A, B	Helsinki. Hernesaari. Buoyage. Areas and borders
194(T)/2024 <a href="#">↗</a>	18, 191, A, B	Helsinki. Sompasaari. Buoyage
230(T)/2024 <a href="#">↗</a>	18, 191, A, B	Helsinki. Melkki. Light Melkki extinguished. Buoyage
238(T)/2024 <a href="#">↗</a>	17, 952, A	Off Porvoo. Lighthouse Porvoon majakka unlit. Buoyage
284(T)/2024 <a href="#">↗</a>	18, 191, A, B	Helsinki. Hakaniemi. Bridge construction work. Areas and borders
21(T)/2025 <a href="#">↗</a>	951, 952	E of lighthouse Kallbådagrund. Areas and borders

## Archipelago Sea

T&P	Charts	Archipelago Sea
189(T)/2023 <a href="#">↗</a>	26, D	Pargas. Kirjala...Restrictions on traffic. Areas and borders
40(T)/2024 <a href="#">↗</a>	26, 190, D	Naantali. Raumakari. Särkäsalmi. Kirkonsalmi. Notice repeated. Buoyage
74(T)/2024 <a href="#">↗</a>	27, 167, D	Pargas. S of Utö. ODAS buoy. Buoyage
130(T)/2024 <a href="#">↗</a>	27, D	Pargas. S of Utö. ODAS buoy. Buoyage
168(T)/2024 <a href="#">↗</a>	25, 26, 37, D	Pargas. Seili. ODAS buoy. Buoyage
239(T)/2024 <a href="#">↗</a>	27, 167, D	S of Utö. Söderdjupet. Measuring equipment on seabed. Areas and borders
250(T)/2024 <a href="#">↗</a>	26, D	Pargas. Hessund...Restrictions on traffic. Areas and borders
267(T)/2024 <a href="#">↗</a>	26, 190, D	Port of Turku. Construction works. Areas and borders

## Aland Sea

T&P	Charts	Aland Sea
97(T)/2024 <a href="#">↗</a>	32, 160, C	Mariehamn. Lemströms canal...Restrictions on traffic. Areas and borders
155(T)/2024 <a href="#">↗</a>	31, 935, C	TSS SOUTH ÅLAND SEA. Light Flötjan extinguished. Buoyage

## Bothnian Sea

T&P	Charts	Bothnian Sea
30(T)/2022 <a href="#">↗</a>	41, 127, E	Rauma. Ulko-Petäjäs. Areas and borders
95(T)/2024 <a href="#">↗</a>	42, 125, 955, E	Pori. Tahkoluoto. Lighthouse Kaijakari extinguished. Buoyage
121(T)/2024 <a href="#">↗</a>	45, 46, 815, 816	Korsnäs. Measuring equipment on seabed. Obstructions
6(T)/2025 <a href="#">↗</a>	42, 125	Pori. Tahkoluoto. Notice repeated. Buoyage

## The Quark

T&P	Charts	The Quark
238(T)/2022 <a href="#">↗</a>	48, 115, 921, F, M	Vaasa. Vaskiluoto. Notice repeated. Buoyage
126(T)/2023 <a href="#">↗</a>	48, 115, 820	Vaasa. Vaskiluoto. Dredging operations. Areas and borders
256(T)/2023 <a href="#">↗</a>	48, 115, 820	Vaasa. Vaskiluoto. Dredging operations. Notice repeated. Areas and borders
62(T)/2024 <a href="#">↗</a>	48, 819, 822, 956, 957, 8061, 8065	Korsholm. W of Replot. Lighthouse Vaasan Majakka extinguished. Buoyage
247(T)/2024 <a href="#">↗</a>	48, 820, 956, 957	Vaasa. Johansson. Buoyage
262(T)/2024 <a href="#">↗</a>	48, 115, 820	Vaasa. Vaskiluoto. ( N2000 ) (BSCD2000). Buoyage. Fairway areas
279(T)/2024 <a href="#">↗</a>	48, 115, 820, 957, 8061, 8065	Vaasa. Vaskiluoto. Buoyage. Fairway areas
16(T)/2025 <a href="#">↗</a>	47, 825, 956, 957, 8065	Buoyage reinstated after the winter season. Buoyage

## Bay of Bothnia

T&P	Charts	Bay of Bothnia
144(T)/2024 <a href="#">↗</a>	57, 846	Oulu. Pajuniemi. Buoyage
145(T)/2024 <a href="#">↗</a>	57, 846, 958, 8071	Hailuoto. Bridge construction work. Areas and borders
164(T)/2024 <a href="#">↗</a>	57, 119, 846	Oulu. Pikisaari. Fairways
197(T)/2024 <a href="#">↗</a>	57, 119, 845, 846	Oulu. Port of Oulu. Dredging operations. Areas and borders
270(T)/2024 <a href="#">↗</a>	57, 846	Hailuoto. Channel section closed for the winter season. Areas and borders
3(T)/2025 <a href="#">↗</a>	57, 60, 848, 958	Off Oulu. SW of Lighthouse Oulu 1. Lost buoy. Virtual AIS. Buoyage
7(T)/2025 <a href="#">↗</a>	60	Kemi. NE of Lighthouse Kemi 1...Winter break. Areas and borders

## Vuoksi watercourse

T&P	Charts	Vuoksi watercourse
268(T)/2019 <a href="#">↗</a>	M	Kuopio. Kotkatniemi. Buoyage
214(T)/2020 <a href="#">↗</a>		Leppävirta. Hyvärilä. Buoyage
90(T)/2023 <a href="#">↗</a>	921, M	Kuopio. Light Sotkanselkä operational. Notice repeated. Buoyage

## Kymijoki watercourse

T&P	Charts	Kymijoki watercourse
-	-	

## Kokemäijoki watercourse

T&P	Charts	Kokemäijoki watercourse
-	-	

## Oulujoki watercourse

T&P	Charts	Oulujoki watercourse
-	-	

## Paatsjoki watercourse

T&P	Charts	Paatsjoki watercourse
-	-	

## Saimaa Canal

T&P	Charts	Saimaa Canal
254(T)/2024 <a href="#">↗</a>		Saimaa Canal closed for the winter season.

## Northern Baltic

T&P	Charts	Northern Baltic
11(T)/2024 <a href="#">↗</a>	952, 953, 954	Hiiumaa. Tahkuna. Light Lehtma extinguished. Buoyage

## Announcements

T&P	Charts	Announcements
291(T)/2022 <a href="#">↗</a>		Bay of Bothnia. Off Oulu. V-AIS. Notice repeated.
137(T)/2023 <a href="#">↗</a>		Helsinki. Korkeasaari...Restrictions on small craft traffic
102(T)/2024 <a href="#">↗</a>		Pargas. Hessund. Bridge construction work.