



Notices to Mariners

NtM 6/2025

Notices: 36 - 42 / 28.02.2025



Table of Contents

Title	Page
Index by Area	2
Index by Chart	3
Archipelago Sea	4
Bothnian Sea	5
The Quark	7
Bay of Bothnia	8
Vuoksi watercourse	9
Announcements	10
Current Preliminary (P) and Temporary (T) notices (28.02.2025)	11

Index by Area

Archipelago Sea

Charts

*36/2025 109, 953, 954, C

Bothnian Sea

Charts

*37/2025 41, 127, 805

*38/2025 42, 125, 809, 955

The Quark

Charts

*39/2025 48, 819, 822, 956, 957, 8061, 8065

Bay of Bothnia

Charts

*40/2025 57, 846

Vuoksi watercourse

Charts

*41/2025 M, V

Announcements

Charts

*42/2025

Index by Chart

Charts	Notices
41	*37/2025
42	*38/2025
48	*39/2025
57	*40/2025
109	*36/2025
125	*38/2025
127	*37/2025
805	*37/2025
809	*38/2025
819	*39/2025
822	*39/2025
846	*40/2025
953	*36/2025
954	*36/2025
955	*38/2025
956	*39/2025
957	*39/2025
8061	*39/2025
8065	*39/2025
C	*36/2025
M	*41/2025
V	*41/2025

Archipelago Sea

*36/2025

2025-02-28

Finland. Archipelago Sea. Kumlinge. Enklinge. Äsplund. (MSL/MW).
Fairways

Charts		Previous
109.A	(INT 11921)	/
953		26/2025 ↗
954	(INT 1210)	26/2025 ↗
C738, C738.1, C748		26/2025 ↗

References:33/2025 [↗](#)

1	109.A, 953, 954, C738, C738.1, C748	(1) 60°18.44'N	20°44.12'E
Amend	—(3,9)— → —(4,1)— Between the following positions:	(2) 60°18.96'N	20°45.44'E

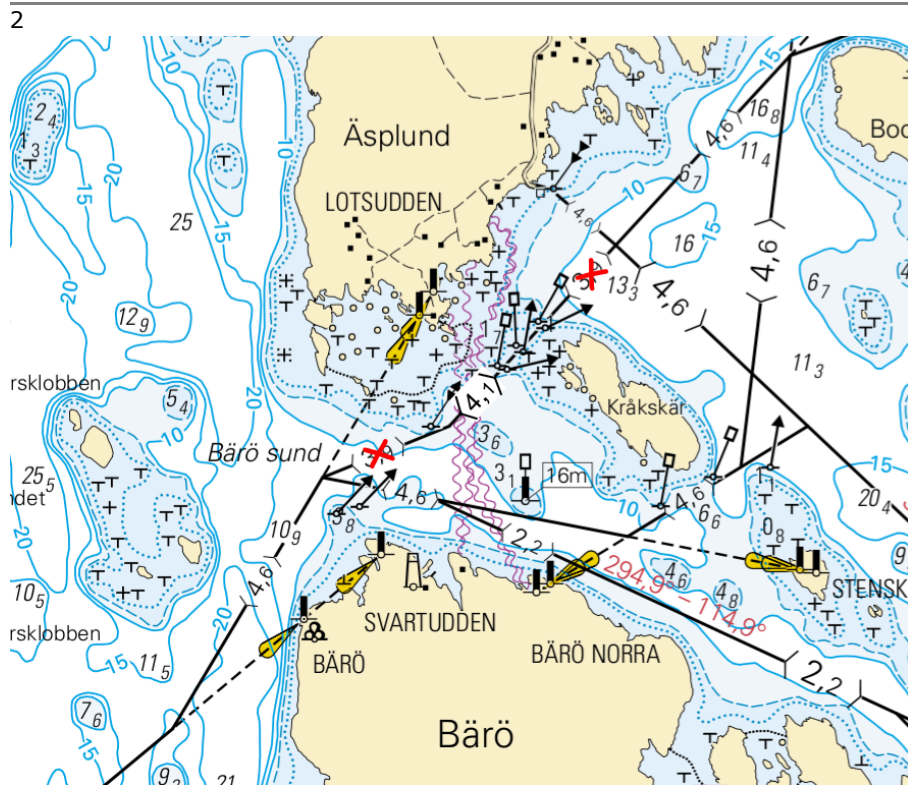


Image for reference, chart extracts not to scale of chart.

(Traficom, Helsinki/Helsingfors 2025)

Bothnian Sea

*37/2025

2025-02-28

Finland. Bothnian Sea. Rauma. Ulko-Petäjäs. Areas and borders

Charts		Previous
41	(INT 1132)	9/2025 ↗
127, 127.A	(INT 11321)	9/2025 ↗
805, 805.A		9/2025 ↗

Cancelled: 30(T)/2022 [↗](#)

1	41, 127, 127.A, 805, 805.A	(1)	61°07.90'N	21°25.34'E
Delete	<p>Area under construction</p> <p>Between the following positions:</p>	(2)	61°08.26'N	21°25.46'E
		(3)	61°08.22'N	21°25.89'E
		(4)	61°08.14'N	21°26.13'E
		(5)	61°08.13'N	21°26.14'E
		(6)	61°08.13'N	21°25.95'E
		(7)	61°08.01'N	21°25.52'E
		(8)	61°07.90'N	21°25.34'E

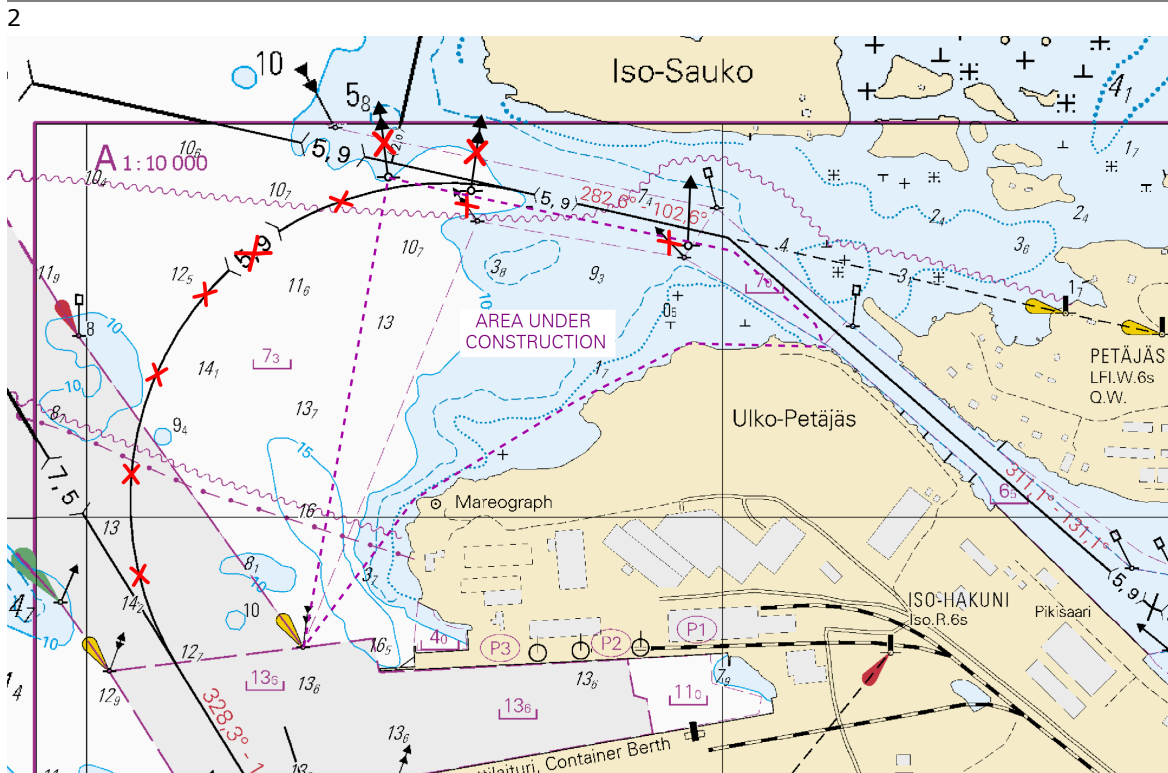


Image for reference, chart extracts not to scale of chart.

(Traficom, Helsinki/Helsingfors 2025)



*38/2025

2025-02-28

Finland. Bothnian Sea. Pori. Tahkoluoto. Lighthouse Kaijakari in operation.
Buoyage

Charts		Previous
42	(INT 1133)	27/2025 ↗
125	(INT 1151)	27/2025 ↗
809		27/2025 ↗
955		271/2024 ↗

Cancelled: 95(T)/2024 [↗](#)

1		42, 125, 809, 955				
Amend				61°36.85'N	21°21.93'E	7378 (C4374)
	KAIJAKARI Fl(2)20s (exting)	KAIJAKARI Fl(2)20s				

(Traficom, Helsinki/Helsingfors 2025)

The Quark





*39/2025

2025-02-28

Finland. The Quark. Korsholm. W of Replot. Lighthouse Vaasan Majakka in operation. Buoyage

Charts		Previous
48	(INT 1139)	279/2024 ↗
819		278/2024 ↗
822		269/2024 ↗
956		16/2025 ↗
957	(INT 1208)	16/2025 ↗
8061/INDEX		288/2024 ↗
8065/Vaasa - Uumaja		29/2025 ↗

Cancelled: 62(T)/2024 [↗](#)

1			48, 819, 822, 956, 957, 8065/Vaasa - Uumaja			
Amend						
	VAASAN		VAASAN			
	MAJAKKA		MAJAKKA			
	Fl(2)10s		Fl(2)10s	63°14.35'N	20°55.64'E	7205, (C4261)
	(exting)		Racon (T)			
	Racon (T)					

(Traficom, Helsinki/Helsingfors 2025)

Bay of Bothnia






*40/2025

2025-02-28

Finland. Bay of Bothnia. Oulu. Pajuniemi. Withdrawn special marks.
Buoyage

Charts		Previous
57	(INT 1148)	3/2025 ↗
846		270/2024 ↗

Cancelled: 144(T)/2024 [↗](#)

1	57, 846			
Delete			65°02.347'N 25°08.336'E	88835
2	57, 846			
Delete			65°01.149'N 25°12.914'E	88834
3	57, 846			
Delete			65°01.111'N 25°12.632'E	88836
4	57, 846			
Delete			65°00.783'N 25°12.580'E	88833
5	57, 846			
Delete			65°00.773'N 25°11.825'E	88826

(GRK Suomi Oy, 2025)

Vuoksi watercourse

*41/2025

2025-02-28

Finland. Vuoksi watercourse. Rantasalmi. Louhisaaret. Depths

Charts

M227

V227, V254

Previous

35/2025 [↗](#)

34/2025 [↗](#)

1		M227, V227, V254		
Delete	<i>b₄</i>		62°04.565'N	28°35.524'E

2		M227, V227, V254		
Add	+		62°04.553'N	28°35.627'E

(Traficom, Helsinki/Helsingfors 2025)

Announcements

*42/2025

2025-02-28

Finland. Notices to Mariners - Information 2025.

Charts

Previous

References:57/2024 [↗](#)

1

Updated information about Notices to Mariners will be available on Traficom's website:

The Hydrographic Office: <https://www.traficom.fi/en/nautical-charts>

(Traficom, Helsinki/Helsingfors 2025)

Current Preliminary (P) and Temporary (T) notices (28.02.2025)

Gulf of Finland

T&P	Charts	Gulf of Finland
174(T)/2019 🔗	951	SE of Bol'soj Tjuters. Obstructions
296(T)/2020 🔗	17, 18, 191, 952, A, B	Helsinki. Sipoo. Areas and borders
20(T)/2021 🔗	951, A	TSS OFF ROOSHER ISLAND. Lighthouse Rodser extinguished. Notice repeated. Buoyage
228(T)/2021 🔗	951, A	Krestovyy. Lighthouse Krestovyy extinguished. Notice repeated. Buoyage
304(T)/2021 🔗	18, 192, A, B	Helsinki. Vuosaari. Notice repeated. Buoyage. Areas and borders
65(T)/2022 🔗	A, S	Vyborg. Destroyed leading beacon. Notice repeated. Buoyage
66(T)/2022 🔗	A, S	Vyborg. Light extinguished. Notice repeated. Buoyage
86(T)/2022 🔗	18, 191, 952, A, B	Helsinki. Kruunuvuori. Restrictions on small craft traffic. Fairways
90(T)/2022 🔗	951	Tiskolovo. Lighthouse Kajbolovo. Buoyage
229(T)/2023 🔗	18, 191, A, B	Helsinki. Hernesaari. Buoyage
230(T)/2023 🔗	18, 191, A, B	Helsinki. Hernesaari. Buoyage. Areas and borders
194(T)/2024 🔗	18, 191, A, B	Helsinki. Sompasaari. Buoyage
230(T)/2024 🔗	18, 191, A, B	Helsinki. Melkki. Light Melkki extinguished. Buoyage
238(T)/2024 🔗	17, 952, A	Off Porvoo. Lighthouse Porvoon majakka unlit. Buoyage
284(T)/2024 🔗	18, 191, A, B	Helsinki. Hakaniemi. Bridge construction work. Areas and borders
21(T)/2025 🔗	951, 952	E of lighthouse Kallbådagrund. Areas and borders
30(T)/2025 🔗	20, 21, 952, B	Raseborg. Busö. Channel section closed for the winter season. Fairways

Archipelago Sea

T&P	Charts	Archipelago Sea
189(T)/2023 🔗	26, D	Pargas. Kirjala...Restrictions on traffic. Areas and borders
40(T)/2024 🔗	26, 190, D	Naantali. Raumakari. Särkängsalmi. Kirkonsalmi. Notice repeated. Buoyage
130(T)/2024 🔗	27, D	Pargas. S of Utö. ODAS buoy. Buoyage
168(T)/2024 🔗	25, 26, 37, D	Pargas. Seili. ODAS buoy. Buoyage
239(T)/2024 🔗	27, 167, D	S of Utö. Söderdjupet. Measuring equipment on seabed. Areas and borders
250(T)/2024 🔗	26, D	Pargas. Hessund...Restrictions on traffic. Areas and borders
267(T)/2024 🔗	26, 190, D	Port of Turku. Construction works. Areas and borders

Aland Sea

T&P	Charts	Aland Sea
97(T)/2024 ↗	32, 160, C	Mariehamn. Lemströms canal...Restrictions on traffic. Areas and borders
155(T)/2024 ↗	31, 935, C	TSS SOUTH ÅLAND SEA. Light Flötjan extinguished. Buoyage

Bothnian Sea

T&P	Charts	Bothnian Sea
121(T)/2024 ↗	45, 46, 815, 816	Korsnäs. Measuring equipment on seabed. Obstructions
6(T)/2025 ↗	42, 125	Pori. Tahkoluoto. Notice repeated. Buoyage

The Quark

T&P	Charts	The Quark
238(T)/2022 ↗	48, 115, 921, F, M	Vaasa. Vaskiluoto. Notice repeated. Buoyage
126(T)/2023 ↗	48, 115, 820	Vaasa. Vaskiluoto. Dredging operations. Areas and borders
256(T)/2023 ↗	48, 115, 820	Vaasa. Vaskiluoto. Dredging operations. Notice repeated. Areas and borders
247(T)/2024 ↗	48, 820, 956, 957	Vaasa. Johansson. Buoyage
262(T)/2024 ↗	48, 115, 820	Vaasa. Vaskiluoto. (N2000) (BSCD2000). Buoyage. Fairway areas
279(T)/2024 ↗	48, 115, 820, 957, 8061, 8065	Vaasa. Vaskiluoto. Buoyage. Fairway areas
16(T)/2025 ↗	47, 825, 956, 957, 8065	Buoyage reinstated after the winter season. Buoyage
29(T)/2025 ↗	47, 825, 8065	TSS IN NORRA KVARKEN. TSS and two-way routes "in Norra Kvarken" temporarily ...

Bay of Bothnia

T&P	Charts	Bay of Bothnia
145(T)/2024 ↗	57, 846, 958, 8071	Hailuoto. Bridge construction work. Areas and borders
164(T)/2024 ↗	57, 119, 846	Oulu. Pikisaari. Fairways
197(T)/2024 ↗	57, 119, 845, 846	Oulu. Port of Oulu. Dredging operations. Areas and borders
270(T)/2024 ↗	57, 846	Hailuoto. Channel section closed for the winter season. Areas and borders
3(T)/2025 ↗	57, 60, 848, 958	Off Oulu. SW of Lighthouse Oulu 1. Lost buoy. Virtual AIS. Buoyage
7(T)/2025 ↗	60	Kemi. NE of Lighthouse Kemi 1...Winter break. Areas and borders

Vuoksi watercourse

T&P	Charts	Vuoksi watercourse
268(T)/2019 ↗	M	Kuopio. Kotkatniemi. Buoyage
214(T)/2020 ↗		Leppävirta. Hyvärilä. Buoyage
90(T)/2023 ↗	921, M	Kuopio. Light Sotkanselkä operational. Notice repeated. Buoyage

Kymijoki watercourse

T&P	Charts	Kymijoki watercourse
-	-	

Kokemäijoki watercourse

T&P	Charts	Kokemäijoki watercourse
-	-	

Oulujoki watercourse

T&P	Charts	Oulujoki watercourse
-	-	

Paatsjoki watercourse

T&P	Charts	Paatsjoki watercourse
-	-	

Saimaa Canal

T&P	Charts	Saimaa Canal
254(T)/2024 ↗		Saimaa Canal closed for the winter season.

Northern Baltic

T&P	Charts	Northern Baltic
11(T)/2024 ↗	952, 953, 954	Hiiumaa. Tahkuna. Light Lehtma extinguished. Buoyage

Announcements

T&P	Charts	Announcements
291(T)/2022 ↗		Bay of Bothnia. Off Oulu. V-AIS. Notice repeated.
137(T)/2023 ↗		Helsinki. Korkeasaari...Restrictions on small craft traffic
102(T)/2024 ↗		Pargas. Hessund. Bridge construction work.