



# Notices to Mariners

## NtM 7/2025

Notices: 43 - 45 / 10.03.2025



# Table of Contents

Title	Page
Index by Area	2
Index by Chart	3
Gulf of Finland	4
Archipelago Sea	6
Vuoksi watercourse	7
Current Preliminary (P) and Temporary (T) notices (10.03.2025)	8

# Index by Area

## **Gulf of Finland**

## **Charts**

\*43/2025

18, 191, A, B

## **Archipelago Sea**

## **Charts**

\*44/2025

D

## **Vuoksi watercourse**

## **Charts**

\*45/2025

M

# Index by Chart

<b>Charts</b>	<b>Notices</b>
18	*43/2025
191	*43/2025
A	*43/2025
B	*43/2025
D	*44/2025
M	*45/2025

# Gulf of Finland

\*43/2025









2025-03-10






Finland. Gulf of Finland. Helsinki. Lammassaari. Buoyage

## Charts

18	(INT 1250)	12/2025 <a href="#">↗</a>
191	(INT 1159)	284/2024 <a href="#">↗</a>
A626		31/2025 <a href="#">↗</a>
B626		31/2025 <a href="#">↗</a>

## Previous

1	18, 191, A626, B626			
Delete 		60°12.353'N	24°59.429'E	58957
2	18, 191, A626, B626			
Delete 		60°12.347'N	24°59.537'E	58958
3	18, 191, A626, B626			
Delete 		60°12.327'N	24°59.859'E	58959
4	18, 191, A626, B626			
Delete 		60°12.321'N	24°59.966'E	58960
5	18, 191, A626, B626			
Delete 		60°12.315'N	25°00.074'E	58961
6	18, 191, A626, B626			
Delete 		60°12.308'N	25°00.181'E	58962
7	18, 191, A626, B626			
Delete 		60°12.302'N	25°00.288'E	58963
8	18, 191, A626, B626			
Delete 		60°12.295'N	25°00.396'E	58964

9		18, 191, A626, B626			
Delete			60°12.289'N	25°00.503'E	58965
10		18, 191, A626, B626			
Delete			60°12.282'N	25°00.611'E	58966
11		18, 191, A626, B626			
Delete			60°12.276'N	25°00.718'E	58967
12		18, 191, A626, B626			
Delete			60°12.269'N	25°00.826'E	58968
13		18, 191, A626, B626			
Delete			60°12.263'N	25°00.933'E	58969

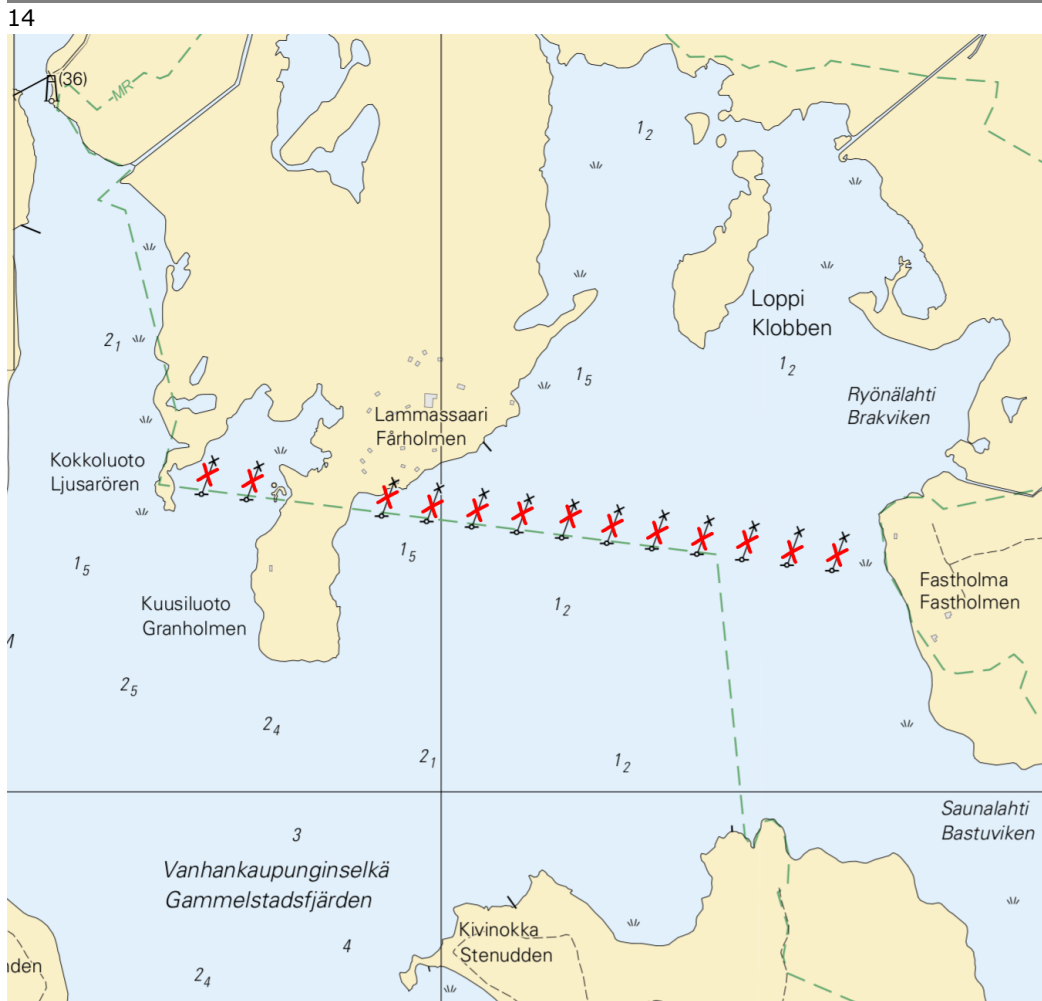


Image for reference, chart extracts not to scale of chart.

(Traficom, Helsinki/Helsingfors 2025)

# Archipelago Sea

\*44/2025

2025-03-10

Finland. Archipelago Sea. Pargas. Österskär. Ports

## Charts

D729, D729.1

## Previous

32/2025 [↗](#)

1

D729, D729.1

Delete



59°58.721'N

21°17.496'E

2



Image for reference, chart extracts not to scale of chart.

(Traficom, Helsinki/Helsingfors 2025)

# Vuoksi watercourse

\*45/2025

2025-03-10

Finland. Vuoksi watercourse. Kuopio. Ports

Charts

M234, M234.1

Previous

41/2025 [↗](#)

1

M234, M234.1

Delete



62°53.689'N

27°41.725'E

2

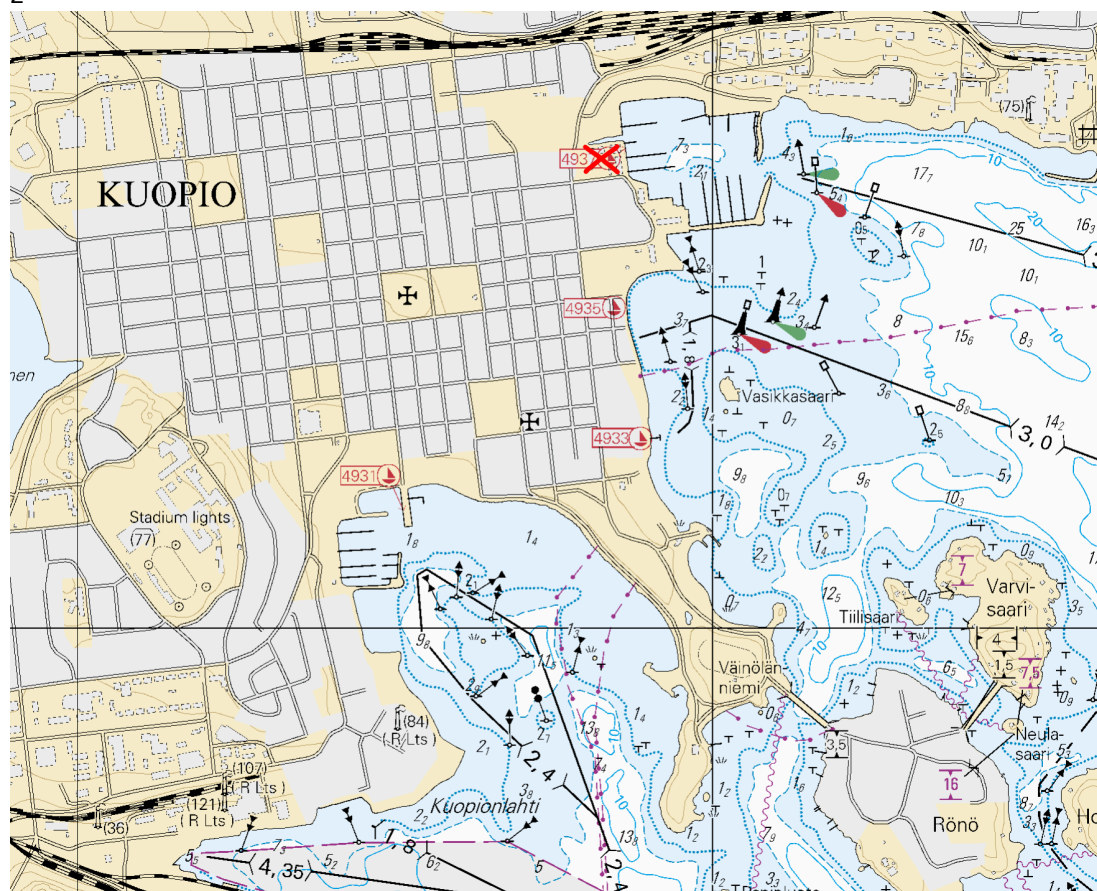


Image for reference, chart extracts not to scale of chart.

(Traficom, Helsinki/Helsingfors 2025)

# Current Preliminary (P) and Temporary (T) notices (10.03.2025)

## Gulf of Finland

T&P	Charts	Gulf of Finland
174(T)/2019 <a href="#">🔗</a>	951	SE of Bol'soj Tjuters. Obstructions
296(T)/2020 <a href="#">🔗</a>	17, 18, 191, 952, A, B	Helsinki. Sipoo. Areas and borders
20(T)/2021 <a href="#">🔗</a>	951, A	TSS OFF ROOSHER ISLAND. Lighthouse Rodser extinguished. Notice repeated. Buoyage
228(T)/2021 <a href="#">🔗</a>	951, A	Krestovyy. Lighthouse Krestovyy extinguished. Notice repeated. Buoyage
304(T)/2021 <a href="#">🔗</a>	18, 192, A, B	Helsinki. Vuosaari. Notice repeated. Buoyage. Areas and borders
65(T)/2022 <a href="#">🔗</a>	A, S	Vyborg. Destroyed leading beacon. Notice repeated. Buoyage
66(T)/2022 <a href="#">🔗</a>	A, S	Vyborg. Light extinguished. Notice repeated. Buoyage
86(T)/2022 <a href="#">🔗</a>	18, 191, 952, A, B	Helsinki. Kruunuvuori. Restrictions on small craft traffic. Fairways
90(T)/2022 <a href="#">🔗</a>	951	Tiskolovo. Lighthouse Kajbolovo. Buoyage
229(T)/2023 <a href="#">🔗</a>	18, 191, A, B	Helsinki. Hernesaari. Buoyage
230(T)/2023 <a href="#">🔗</a>	18, 191, A, B	Helsinki. Hernesaari. Buoyage. Areas and borders
194(T)/2024 <a href="#">🔗</a>	18, 191, A, B	Helsinki. Sompasaari. Buoyage
230(T)/2024 <a href="#">🔗</a>	18, 191, A, B	Helsinki. Melkki. Light Melkki extinguished. Buoyage
238(T)/2024 <a href="#">🔗</a>	17, 952, A	Off Porvoo. Lighthouse Porvoon majakka unlit. Buoyage
284(T)/2024 <a href="#">🔗</a>	18, 191, A, B	Helsinki. Hakaniemi. Bridge construction work. Areas and borders
21(T)/2025 <a href="#">🔗</a>	951, 952	E of lighthouse Kallbådagrund. Areas and borders
30(T)/2025 <a href="#">🔗</a>	20, 21, 952, B	Raseborg. Busö. Channel section closed for the winter season. Fairways

## Archipelago Sea

T&P	Charts	Archipelago Sea
189(T)/2023 <a href="#">🔗</a>	26, D	Pargas. Kirjala...Restrictions on traffic. Areas and borders
40(T)/2024 <a href="#">🔗</a>	26, 190, D	Naantali. Raumakari. Särkängsalmi. Kirkonsalmi. Notice repeated. Buoyage
130(T)/2024 <a href="#">🔗</a>	27, D	Pargas. S of Utö. ODAS buoy. Buoyage
168(T)/2024 <a href="#">🔗</a>	25, 26, 37, D	Pargas. Seili. ODAS buoy. Buoyage
239(T)/2024 <a href="#">🔗</a>	27, 167, D	S of Utö. Söderdjupet. Measuring equipment on seabed. Areas and borders
250(T)/2024 <a href="#">🔗</a>	26, D	Pargas. Hessund...Restrictions on traffic. Areas and borders
267(T)/2024 <a href="#">🔗</a>	26, 190, D	Port of Turku. Construction works. Areas and borders

## Aland Sea

T&P	Charts	Aland Sea
97(T)/2024 <a href="#">↗</a>	32, 160, C	Mariehamn. Lemströms canal...Restrictions on traffic. Areas and borders
155(T)/2024 <a href="#">↗</a>	31, 935, C	TSS SOUTH ÅLAND SEA. Light Flötjan extinguished. Buoyage

## Bothnian Sea

T&P	Charts	Bothnian Sea
121(T)/2024 <a href="#">↗</a>	45, 46, 815, 816	Korsnäs. Measuring equipment on seabed. Obstructions
6(T)/2025 <a href="#">↗</a>	42, 125	Pori. Tahkoluoto. Notice repeated. Buoyage

## The Quark

T&P	Charts	The Quark
238(T)/2022 <a href="#">↗</a>	48, 115, 921, F, M	Vaasa. Vaskiluoto. Notice repeated. Buoyage
126(T)/2023 <a href="#">↗</a>	48, 115, 820	Vaasa. Vaskiluoto. Dredging operations. Areas and borders
256(T)/2023 <a href="#">↗</a>	48, 115, 820	Vaasa. Vaskiluoto. Dredging operations. Notice repeated. Areas and borders
247(T)/2024 <a href="#">↗</a>	48, 820, 956, 957	Vaasa. Johansson. Buoyage
262(T)/2024 <a href="#">↗</a>	48, 115, 820	Vaasa. Vaskiluoto. ( N2000 ) (BSCD2000). Buoyage. Fairway areas
279(T)/2024 <a href="#">↗</a>	48, 115, 820, 957, 8061, 8065	Vaasa. Vaskiluoto. Buoyage. Fairway areas
16(T)/2025 <a href="#">↗</a>	47, 825, 956, 957, 8065	Buoyage reinstated after the winter season. Buoyage
29(T)/2025 <a href="#">↗</a>	47, 825, 8065	TSS IN NORRA KVARKEN. TSS and two-way routes "in Norra Kvarken" temporarily ...

## Bay of Bothnia

T&P	Charts	Bay of Bothnia
145(T)/2024 <a href="#">↗</a>	57, 846, 958, 8071	Hailuoto. Bridge construction work. Areas and borders
164(T)/2024 <a href="#">↗</a>	57, 119, 846	Oulu. Pikisaari. Fairways
197(T)/2024 <a href="#">↗</a>	57, 119, 845, 846	Oulu. Port of Oulu. Dredging operations. Areas and borders
270(T)/2024 <a href="#">↗</a>	57, 846	Hailuoto. Channel section closed for the winter season. Areas and borders
3(T)/2025 <a href="#">↗</a>	57, 60, 848, 958	Off Oulu. SW of Lighthouse Oulu 1. Lost buoy. Virtual AIS. Buoyage
7(T)/2025 <a href="#">↗</a>	60	Kemi. NE of Lighthouse Kemi 1...Winter break. Areas and borders

## Vuoksi watercourse

T&P	Charts	Vuoksi watercourse
268(T)/2019 <a href="#">↗</a>	M	Kuopio. Kotkatniemi. Buoyage
214(T)/2020 <a href="#">↗</a>		Leppävirta. Hyvärilä. Buoyage
90(T)/2023 <a href="#">↗</a>	921, M	Kuopio. Light Sotkanselkä operational. Notice repeated. Buoyage

## Kymijoki watercourse

T&P	Charts	Kymijoki watercourse
-	-	

## Kokemäijoki watercourse

T&P	Charts	Kokemäijoki watercourse
-	-	

## Oulujoki watercourse

T&P	Charts	Oulujoki watercourse
-	-	

## Paatsjoki watercourse

T&P	Charts	Paatsjoki watercourse
-	-	

## Saimaa Canal

T&P	Charts	Saimaa Canal
254(T)/2024 <a href="#">↗</a>		Saimaa Canal closed for the winter season.

## Northern Baltic

T&P	Charts	Northern Baltic
11(T)/2024 <a href="#">↗</a>	952, 953, 954	Hiiumaa. Tahkuna. Light Lehtma extinguished. Buoyage

## Announcements

T&P	Charts	Announcements
291(T)/2022 <a href="#">↗</a>		Bay of Bothnia. Off Oulu. V-AIS. Notice repeated.
137(T)/2023 <a href="#">↗</a>		Helsinki. Korkeasaari...Restrictions on small craft traffic
102(T)/2024 <a href="#">↗</a>		Pargas. Hessund. Bridge construction work.