



Notices to Mariners

NtM 8/2025

Notices: 46 - 52 / 20.03.2025



Table of Contents

Title	Page
Index by Area	2
Index by Chart	3
Gulf of Finland	4
The Quark	6
Bay of Bothnia	7
Vuoksi watercourse	11
Announcements	12
Current Preliminary (P) and Temporary (T) notices (20.03.2025)	13

Index by Area

Gulf of Finland

Charts

*46/2025	20, 21, 952, B
*47/2025	18, 191, A, B

The Quark

Charts

48/2025	47, 825, 8065
---------	---------------

Bay of Bothnia

Charts

*49(T)/2025	57, 119, 845, 846
-------------	-------------------

Vuoksi watercourse

Charts

*50/2025	921, M
*51/2025	M

Announcements

Charts

*52/2025	
----------	--

Index by Chart

Charts	Notices
18	*47/2025
20	*46/2025
21	*46/2025
47	48/2025
57	*49(T)/2025
119	*49(T)/2025
191	*47/2025
825	48/2025
845	*49(T)/2025
846	*49(T)/2025
921	*50/2025
952	*46/2025
8065	48/2025
A	*47/2025
B	*46/2025, *47/2025
M	*50/2025, *51/2025

Gulf of Finland

*46/2025

2025-03-20

Finland. Gulf of Finland. Raseborg. Busö. Channel section opened to vessel traffic. Fairways

Charts	Previous
20	(INT 1252) 30/2025 ↗
21	(INT 1253) 30/2025 ↗
952	31/2025 ↗
B633, B635, B/Hanko - Haapsalu	43/2025 ↗

Cancelled: 30(T)/2025 [↗](#)

1	20, 21, 952, B633, B635, B/Hanko - Haapsalu	(1)	59°51.92'N	23°32.98'E
Add	—(2,5)—	Between the following positions:	(2)	59°52.84'N 23°37.96'E

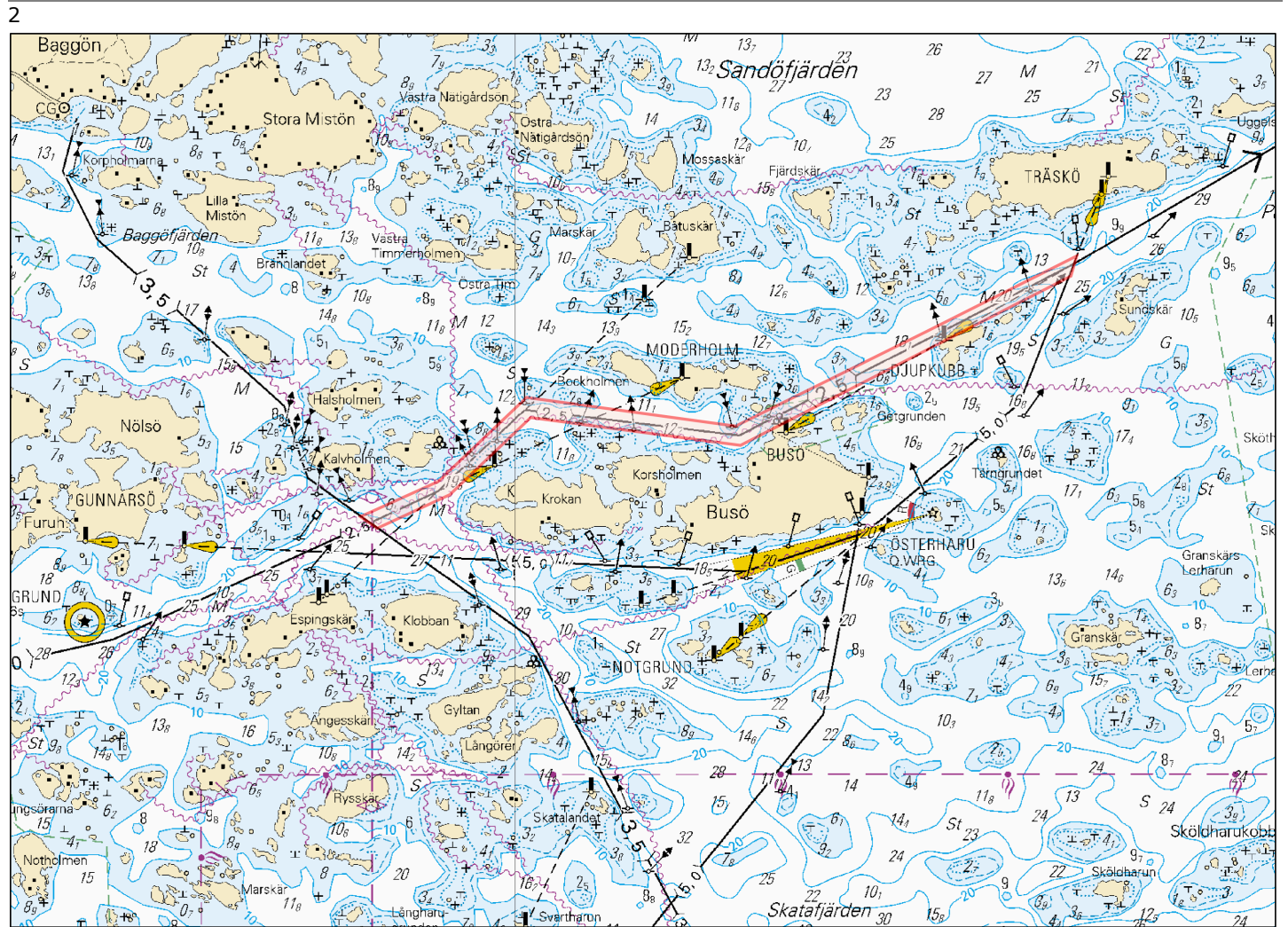


Image for reference, chart extracts not to scale of chart.

(Traficom, Helsinki/Helsingfors 2025)

*47/2025

2025-03-20

Finland. Gulf of Finland. Helsinki. Hakaniemi. Vertical Clearances

Charts		Previous
18	(INT 1250)	43/2025 ↗
191	(INT 1159)	43/2025 ↗
A626		43/2025 ↗
B626		46/2025 ↗

1 18, 191, A626, B626

Amend



60°10.63'N

24°57.46'E

2



Image for reference, chart extracts not to scale of chart.

(Helsingin kaupunki, Helsingfors stad 2025)

The Quark

48/2025


2025-03-20

Sweden. The Quark. TSS IN NORRA KVARKEN. TSS and two-way routes "in Norra Kvarken" will open to traffic. Fairway areas

Charts	Previous
47	(INT 1138) 29/2025 ↗
825	29/2025 ↗
8065/Vaasa - Uumaja	39/2025 ↗

Cancelled: 29(T)/2025 [↗](#)

1
TSS in Norra Kvarken. TSS and two-way routes "in Norra Kvarken" will open to traffic from 23 March 2025, 2400 UTC

2	47, 825, 8065/Vaasa - Uumaja
Add 	Between the following positions:
	(1) 63°25.3'N 20°34.8'E
	(2) 63°35.1'N 21°03.7'E

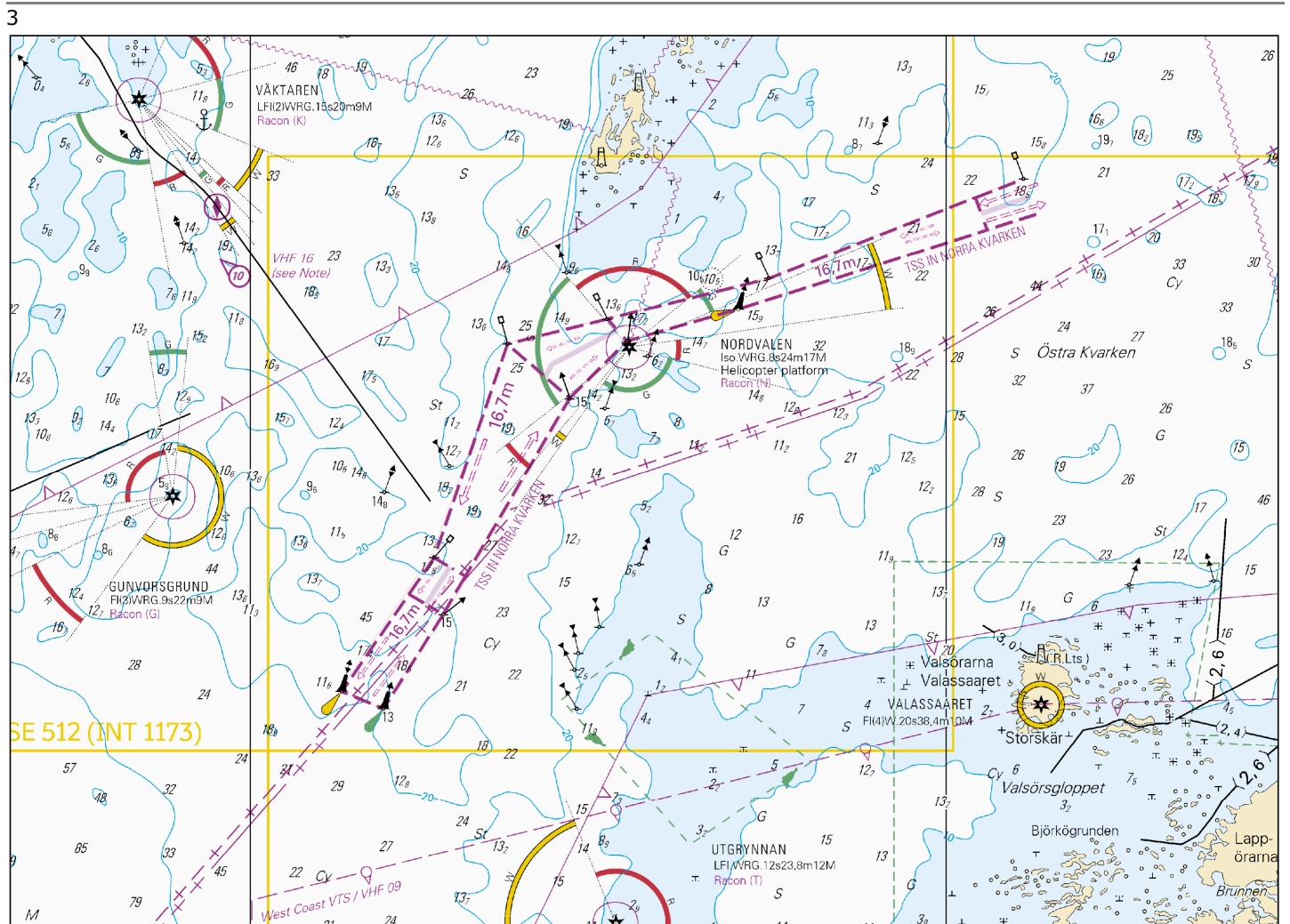


Image for reference, chart extracts not to scale of chart.

(Transportstyrelsen, Norrköping 2025)

Bay of Bothnia

*49(T)/2025

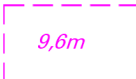
2025-03-20


Finland. Bay of Bothnia. Port of Oulu. (N2000) (BSCD2000). Notice repeated. Depths. Fairways. Fairway areas

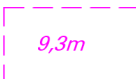
Charts		Previous
57	(INT 1148)	40/2025 ↗
119.B	(INT 11461)	17/2025 ↗
845		204/2024 ↗
846, 846.A		40/2025 ↗

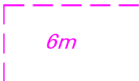
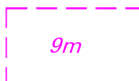


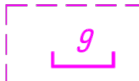
Time: to approx. 31 May 2026

References: [272/2023 ↗](#), [197\(T\)/2024 ↗](#), [200/2024 ↗](#)

1	57, 119.B, 845, 846, 846.A			
Add 	Between the following positions:	(1)	65°00.021'N	25°24.341'E
	Delete former edge line	(2)	64°59.977'N	25°24.661'E
		(3)	64°59.964'N	25°24.686'E
		(4)	64°59.963'N	25°24.730'E
		(5)	64°59.836'N	25°24.982'E
		(6)	64°59.852'N	25°25.029'E
		(7)	64°59.850'N	25°25.083'E
		(8)	64°59.867'N	25°25.151'E
		(9)	64°59.977'N	25°24.987'E
		(10)	65°00.015'N	25°24.938'E
		(11)	65°00.120'N	25°24.839'E
		(12)	65°00.144'N	25°24.807'E
		(13)	65°00.113'N	25°24.413'E
		(14)	65°00.144'N	25°24.025'E

2	57, 119.B, 845, 846, 846.A			
Amend	10,8m		9,6m	65°00.09'N 25°24.47'E

3	57, 119.B, 845, 846, 846.A			
Add 	Between the following positions:	(1)	65°00.015'N	25°24.938'E
		(2)	65°00.120'N	25°24.839'E
	Delete former edge line	(3)	65°00.185'N	25°25.156'E
		(4)	65°00.172'N	25°25.251'E

4		57, 119.B, 845, 846, 846.A			
Add		Between the following positions:	(1)	65°00.120'N	25°24.839'E
			(2)	65°00.185'N	25°25.156'E
		Delete former edge line	(3)	65°00.172'N	25°25.251'E
			(4)	65°00.182'N	25°25.271'E
			(5)	65°00.190'N	25°25.251'E
			(6)	65°00.348'N	25°25.693'E
			(7)	65°00.371'N	25°25.652'E
			(8)	65°00.195'N	25°25.082'E
			(9)	65°00.144'N	25°24.807'E
5		57, 119.B, 845, 846, 846.A			
Amend	6,8m → 6m			65°00.15'N	25°24.90'E
6		119.B, 846.A			
Amend	6,8m → 6m			65°00.35'N	25°25.61'E
7		57, 119.B, 845, 846, 846.A			
Add		Between the following positions:	(1)	65°00.009'N	25°24.331'E
			(2)	65°00.021'N	25°24.341'E
			(3)	64°59.964'N	25°24.641'E
			(4)	64°59.964'N	25°24.686'E
			(5)	64°59.977'N	25°24.661'E
8		119.B, 846.A			
Amend	9,7m → 9 ₆			64°59.94'N	25°24.75'E
9		57, 119.B, 845, 846, 846.A			
Add		Between the following positions:	(1)	64°59.921'N	25°24.770'E
			(2)	64°59.931'N	25°24.798'E
		Delete former edge line	(3)	64°59.864'N	25°24.927'E
			(4)	64°59.854'N	25°24.898'E
10		57, 119.B, 845, 846, 846.A			
Add		Between the following positions:	(1)	64°59.854'N	25°24.898'E
			(2)	64°59.864'N	25°24.927'E
		Delete former edge line	(3)	64°59.826'N	25°25.002'E
			(4)	64°59.816'N	25°24.974'E
11		57, 119.B, 845, 846, 846.A			
Add		Between the following positions:	(1)	64°59.836'N	25°24.982'E
			(2)	64°59.826'N	25°25.002'E
			(3)	64°59.852'N	25°25.029'E
			(4)	64°59.850'N	25°25.083'E
			(5)	64°59.845'N	25°25.052'E
			(6)	64°59.830'N	25°25.006'E
			(7)	64°59.826'N	25°25.002'E

12 119.B, 846.A

Amend 8m → $\frac{7}{2}$ 65°00.06'N 25°25.08'E

13 57, 119.B, 845, 846, 846.A

Amend 10,0 → 8,8 Design draught between: (1) 65°00.11'N 25°24.05'E
(2) 65°00.06'N 25°24.56'E

14 57, 119.B, 845, 846, 846.A

Amend 6,2 → 5,4 Design draught between: (1) 65°00.18'N 25°25.16'E
(2) 65°00.36'N 25°25.67'E

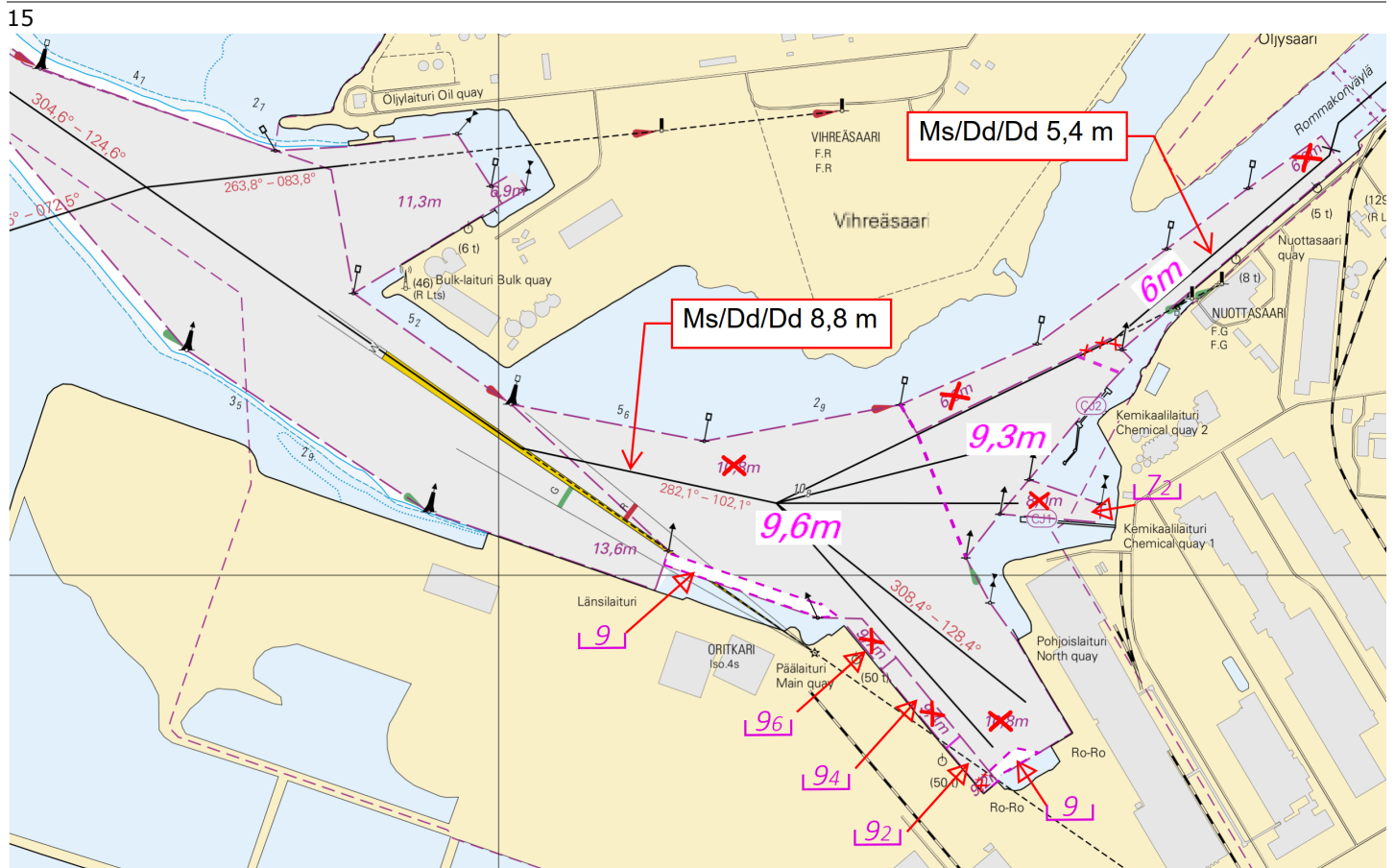


Image for reference, chart extracts not to scale of chart.

16
Caution area

Due to siltation caused by the River Oulujoki, depths in the area of the Port of Oulu may at times be less than the safe clearance depths indicated. For the latest information, consult the Port of Oulu authorities/pilot.

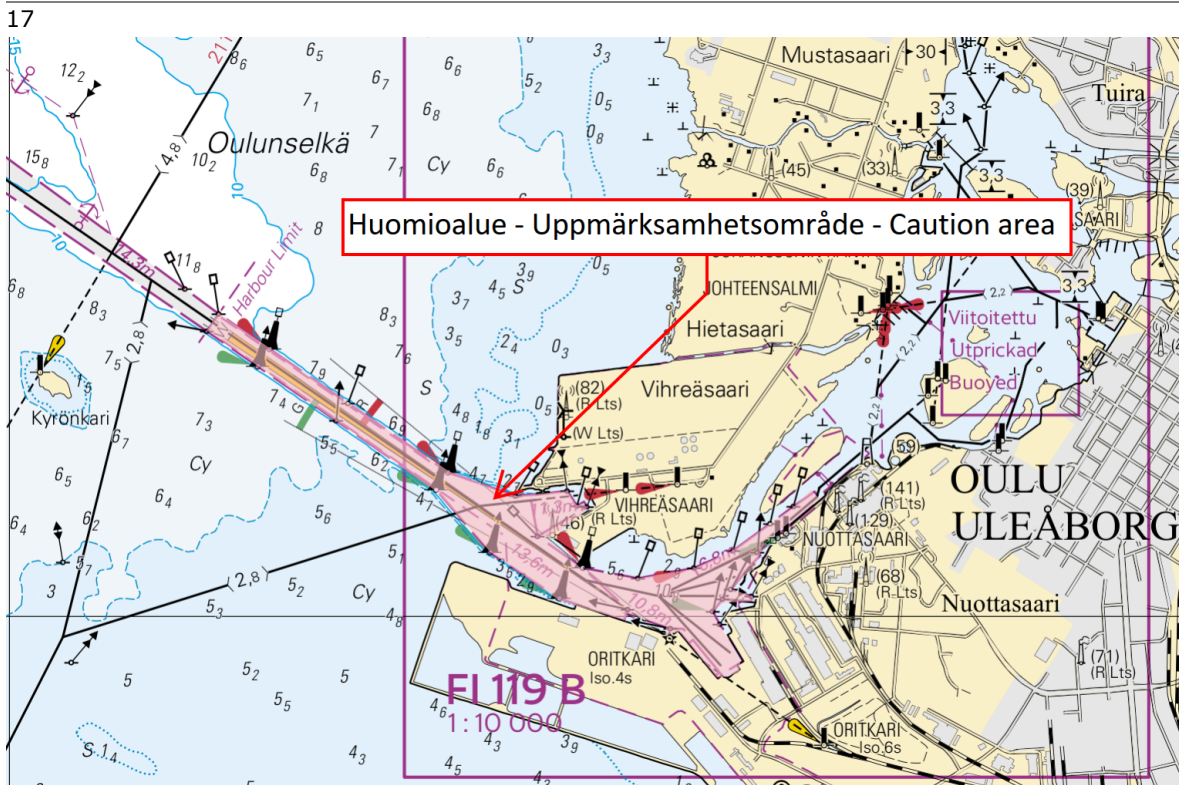


Image for reference, chart extracts not to scale of chart.

(Traficom, Helsinki/Helsingfors 2025)

Vuoksi watercourse

*50/2025

2025-03-20

Finland. Vuoksi watercourse. Kuopio. Light Sotkanselkä withdrawn.
Buoyage

Charts

921
M/INDEX, M/INDEX, M233

Previous

122/2024 [↗](#)
45/2025 [↗](#)

Cancelled: 90(T)/2023 [↗](#)

1	921, M233			
Delete	 SOTKANSELKÄ VQ(2)WRG.3s	62°42.045'N	27°45.537'E	60673

(Traficom, Helsinki/Helsingfors 2025)

*51/2025

2025-03-20

Finland. Vuoksi watercourse. Kuopio. Light Kotkatvesi withdrawn. Buoyage

Charts

M234, M235

Previous

50/2025 [↗](#)

Cancelled: 268(T)/2019 [↗](#)

1	M234, M235			
Delete	 KOTKATVESI LFI.W.8s	62°56.558'N	27°50.244'E	83031

2	M234, M235			
Delete	— — — — Leading line between the following positions:	(1) 62°56.558'N	27°50.244'E	
		(2) 62°57.383'N	27°49.949'E	

(Traficom, Helsinki/Helsingfors 2025)

Announcements

*52/2025

2025-03-20

Finland. Summer time 2025.

[Charts](#)

[Previous](#)

1

Summer time is observed in Finland. Summer time starts on Sunday, March 30 at 03:00, when clocks are adjusted forward one hour (UTC 3h). Summer time ends on Sunday, October 26 at 04:00, when clocks are adjusted backward one hour to winter time (UTC 2h).
(Traficom, Helsinki/Helsingfors 2025)

Current Preliminary (P) and Temporary (T) notices (20.03.2025)

Gulf of Finland

T&P	Charts	Gulf of Finland
174(T)/2019 🔗	951	SE of Bol'soj Tjuters. Obstructions
296(T)/2020 🔗	17, 18, 191, 952, A, B	Helsinki. Sipoo. Areas and borders
20(T)/2021 🔗	951, A	TSS OFF ROOSHER ISLAND. Lighthouse Rodser extinguished. Notice repeated. Buoyage
228(T)/2021 🔗	951, A	Krestovyy. Lighthouse Krestovyy extinguished. Notice repeated. Buoyage
304(T)/2021 🔗	18, 192, A, B	Helsinki. Vuosaari. Notice repeated. Buoyage. Areas and borders
65(T)/2022 🔗	A, S	Vyborg. Destroyed leading beacon. Notice repeated. Buoyage
66(T)/2022 🔗	A, S	Vyborg. Light extinguished. Notice repeated. Buoyage
86(T)/2022 🔗	18, 191, 952, A, B	Helsinki. Kruunuvuori. Restrictions on small craft traffic. Fairways
90(T)/2022 🔗	951	Tiskolovo. Lighthouse Kajbolovo. Buoyage
229(T)/2023 🔗	18, 191, A, B	Helsinki. Hernesaari. Buoyage
230(T)/2023 🔗	18, 191, A, B	Helsinki. Hernesaari. Buoyage. Areas and borders
194(T)/2024 🔗	18, 191, A, B	Helsinki. Sompasaari. Buoyage
230(T)/2024 🔗	18, 191, A, B	Helsinki. Melkki. Light Melkki extinguished. Buoyage
238(T)/2024 🔗	17, 952, A	Off Porvoo. Lighthouse Porvoon majakka unlit. Buoyage
284(T)/2024 🔗	18, 191, A, B	Helsinki. Hakaniemi. Bridge construction work. Areas and borders
21(T)/2025 🔗	951, 952	E of lighthouse Kallbådagrund. Areas and borders

Archipelago Sea

T&P	Charts	Archipelago Sea
189(T)/2023 🔗	26, D	Pargas. Kirjala...Restrictions on traffic. Areas and borders
40(T)/2024 🔗	26, 190, D	Naantali. Raumakari. Särkäsalmi. Kirkonsalmi. Notice repeated. Buoyage
130(T)/2024 🔗	27, D	Pargas. S of Utö. ODAS buoy. Buoyage
168(T)/2024 🔗	25, 26, 37, D	Pargas. Seili. ODAS buoy. Buoyage
239(T)/2024 🔗	27, 167, D	S of Utö. Söderdjupet. Measuring equipment on seabed. Areas and borders
250(T)/2024 🔗	26, D	Pargas. Hessund...Restrictions on traffic. Areas and borders
267(T)/2024 🔗	26, 190, D	Port of Turku. Construction works. Areas and borders

Aland Sea

T&P	Charts	Aland Sea
97(T)/2024 ↗	32, 160, C	Mariehamn. Lemströms canal...Restrictions on traffic. Areas and borders
155(T)/2024 ↗	31, 935, C	TSS SOUTH ÅLAND SEA. Light Flötjan extinguished. Buoyage

Bothnian Sea

T&P	Charts	Bothnian Sea
121(T)/2024 ↗	45, 46, 815, 816	Korsnäs. Measuring equipment on seabed. Obstructions
6(T)/2025 ↗	42, 125	Pori. Tahkoluoto. Notice repeated. Buoyage

The Quark

T&P	Charts	The Quark
238(T)/2022 ↗	48, 115, 921, F, M	Vaasa. Vaskiluoto. Notice repeated. Buoyage
126(T)/2023 ↗	48, 115, 820	Vaasa. Vaskiluoto. Dredging operations. Areas and borders
256(T)/2023 ↗	48, 115, 820	Vaasa. Vaskiluoto. Dredging operations. Notice repeated. Areas and borders
247(T)/2024 ↗	48, 820, 956, 957	Vaasa. Johansson. Buoyage
262(T)/2024 ↗	48, 115, 820	Vaasa. Vaskiluoto. (N2000) (BSCD2000). Buoyage. Fairway areas
279(T)/2024 ↗	48, 115, 820, 957, 8061, 8065	Vaasa. Vaskiluoto. Buoyage. Fairway areas
16(T)/2025 ↗	47, 825, 956, 957, 8065	Buoyage reinstated after the winter season. Buoyage

Bay of Bothnia

T&P	Charts	Bay of Bothnia
145(T)/2024 ↗	57, 846, 958, 8071	Hailuoto. Bridge construction work. Areas and borders
164(T)/2024 ↗	57, 119, 846	Oulu. Pikisaari. Fairways
197(T)/2024 ↗	57, 119, 845, 846	Oulu. Port of Oulu. Dredging operations. Areas and borders
270(T)/2024 ↗	57, 846	Hailuoto. Channel section closed for the winter season. Areas and borders
3(T)/2025 ↗	57, 60, 848, 958	Off Oulu. SW of Lighthouse Oulu 1. Lost buoy. Virtual AIS. Buoyage
7(T)/2025 ↗	60	Kemi. NE of Lighthouse Kemi 1...Winter break. Areas and borders
49(T)/2025 ↗	57, 119, 845, 846	Port of Oulu. (N2000) (BSCD2000)...Depths. Fairways. Fairway areas

Vuoksi watercourse

T&P

Charts

Vuoksi watercourse

214(T)/2020 [↗](#)

Leppävirta. Hyvärilä. Buoyage

Kymijoki watercourse

T&P

Charts

Kymijoki watercourse

-

-

Kokemäkjoki watercourse

T&P

Charts

Kokemäkjoki watercourse

-

-

Oulujoki watercourse

T&P

Charts

Oulujoki watercourse

-

-

Paatsjoki watercourse

T&P

Charts

Paatsjoki watercourse

-

-

Saimaa Canal

T&P

Charts

Saimaa Canal

254(T)/2024 [↗](#)

Saimaa Canal closed for the winter season.

Northern Baltic

T&P	Charts	Northern Baltic
11(T)/2024 ↗	952, 953, 954	Hiiumaa. Tahkuna. Light Lehtma extinguished. Buoyage

Announcements

T&P	Charts	Announcements
291(T)/2022 ↗		Bay of Bothnia. Off Oulu. V-AIS. Notice repeated.
137(T)/2023 ↗		Helsinki. Korkeasaari...Restrictions on small craft traffic
102(T)/2024 ↗		Pargas. Hessund. Bridge construction work.