



Notices to Mariners

NtM 9/2025

Notices: 53 - 56 / 31.03.2025



Table of Contents

Title	Page
Index by Area	2
Index by Chart	3
Archipelago Sea	4
Bay of Bothnia	10
Announcements	12
Current Preliminary (P) and Temporary (T) notices (31.03.2025)	14

Index by Area

Archipelago Sea

Charts

*53/2025

26, 190, 952, 953, 954, D

Bay of Bothnia

Charts

*54/2025

56, 60, 958, 8071

Announcements

Charts

*55/2025

*56/2025

Index by Chart

Charts	Notices
26	*53/2025
56	*54/2025
60	*54/2025
190	*53/2025
952	*53/2025
953	*53/2025
954	*53/2025
958	*54/2025
8071	*54/2025
D	*53/2025


Archipelago Sea

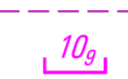
*53/2025


2025-03-31

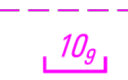
Finland. Archipelago Sea. Turku. (MSL/MW). Fairways. Fairway areas. Areas and borders. Chart marking


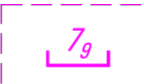


Charts		Previous
26	(INT 1189)	285/2024 ↗
190, 190.C	(INT 1158)	285/2024 ↗
952		46/2025 ↗
953		36/2025 ↗
954	(INT 1210)	36/2025 ↗
D706, D706.2, D/Utö - Turku		44/2025 ↗

1	26, 190, 190.C, 952, 953, 954, D706, D706.2, D/Utö - Turku								
Amend		Between the following positions:	<table border="0"> <tr> <td>(1)</td> <td>60°24.281'N</td> <td>22°07.276'E</td> </tr> <tr> <td>(2)</td> <td>60°26.069'N</td> <td>22°12.736'E</td> </tr> </table>	(1)	60°24.281'N	22°07.276'E	(2)	60°26.069'N	22°12.736'E
(1)	60°24.281'N	22°07.276'E							
(2)	60°26.069'N	22°12.736'E							

2	26, 190, D706, D706.2																										
Add		Swept area edge line between positions:	<table border="0"> <tr> <td>(1)</td> <td>60°24.302'N</td> <td>22°07.107'E</td> </tr> <tr> <td>(2)</td> <td>60°24.260'N</td> <td>22°07.449'E</td> </tr> <tr> <td>(3)</td> <td>60°24.634'N</td> <td>22°07.657'E</td> </tr> <tr> <td>(4)</td> <td>60°24.759'N</td> <td>22°07.799'E</td> </tr> <tr> <td>(5)</td> <td>60°24.925'N</td> <td>22°08.053'E</td> </tr> <tr> <td>(6)</td> <td>60°24.964'N</td> <td>22°07.930'E</td> </tr> <tr> <td>(7)</td> <td>60°24.470'N</td> <td>22°07.332'E</td> </tr> <tr> <td>(8)</td> <td>60°24.302'N</td> <td>22°07.107'E</td> </tr> </table>	(1)	60°24.302'N	22°07.107'E	(2)	60°24.260'N	22°07.449'E	(3)	60°24.634'N	22°07.657'E	(4)	60°24.759'N	22°07.799'E	(5)	60°24.925'N	22°08.053'E	(6)	60°24.964'N	22°07.930'E	(7)	60°24.470'N	22°07.332'E	(8)	60°24.302'N	22°07.107'E
(1)	60°24.302'N	22°07.107'E																									
(2)	60°24.260'N	22°07.449'E																									
(3)	60°24.634'N	22°07.657'E																									
(4)	60°24.759'N	22°07.799'E																									
(5)	60°24.925'N	22°08.053'E																									
(6)	60°24.964'N	22°07.930'E																									
(7)	60°24.470'N	22°07.332'E																									
(8)	60°24.302'N	22°07.107'E																									

3	26, 190, D706, D706.2																	
Add		Swept area edge line between positions:	<table border="0"> <tr> <td>(1)</td> <td>60°24.925'N</td> <td>22°08.053'E</td> </tr> <tr> <td>(2)</td> <td>60°25.123'N</td> <td>22°08.487'E</td> </tr> <tr> <td>(3)</td> <td>60°25.200'N</td> <td>22°08.481'E</td> </tr> <tr> <td>(4)</td> <td>60°24.964'N</td> <td>22°07.930'E</td> </tr> <tr> <td>(5)</td> <td>60°24.925'N</td> <td>22°08.053'E</td> </tr> </table>	(1)	60°24.925'N	22°08.053'E	(2)	60°25.123'N	22°08.487'E	(3)	60°25.200'N	22°08.481'E	(4)	60°24.964'N	22°07.930'E	(5)	60°24.925'N	22°08.053'E
(1)	60°24.925'N	22°08.053'E																
(2)	60°25.123'N	22°08.487'E																
(3)	60°25.200'N	22°08.481'E																
(4)	60°24.964'N	22°07.930'E																
(5)	60°24.925'N	22°08.053'E																

4	26, 190, D706, D706.2																										
Add		Swept area edge line between positions:	<table border="0"> <tr> <td>(1)</td> <td>60°25.123'N</td> <td>22°08.487'E</td> </tr> <tr> <td>(2)</td> <td>60°25.177'N</td> <td>22°08.663'E</td> </tr> <tr> <td>(3)</td> <td>60°25.215'N</td> <td>22°08.945'E</td> </tr> <tr> <td>(4)</td> <td>60°25.276'N</td> <td>22°09.439'E</td> </tr> <tr> <td>(5)</td> <td>60°25.329'N</td> <td>22°09.228'E</td> </tr> <tr> <td>(6)</td> <td>60°25.329'N</td> <td>22°09.023'E</td> </tr> <tr> <td>(7)</td> <td>60°25.200'N</td> <td>22°08.481'E</td> </tr> <tr> <td>(8)</td> <td>60°25.123'N</td> <td>22°08.487'E</td> </tr> </table>	(1)	60°25.123'N	22°08.487'E	(2)	60°25.177'N	22°08.663'E	(3)	60°25.215'N	22°08.945'E	(4)	60°25.276'N	22°09.439'E	(5)	60°25.329'N	22°09.228'E	(6)	60°25.329'N	22°09.023'E	(7)	60°25.200'N	22°08.481'E	(8)	60°25.123'N	22°08.487'E
(1)	60°25.123'N	22°08.487'E																									
(2)	60°25.177'N	22°08.663'E																									
(3)	60°25.215'N	22°08.945'E																									
(4)	60°25.276'N	22°09.439'E																									
(5)	60°25.329'N	22°09.228'E																									
(6)	60°25.329'N	22°09.023'E																									
(7)	60°25.200'N	22°08.481'E																									
(8)	60°25.123'N	22°08.487'E																									

5		26, 190, D706, D706.2		
Add		Swept area edge line between positions:	(1) 60°25.276'N 22°09.439'E	
			(2) 60°25.289'N 22°09.552'E	
			(3) 60°25.292'N 22°09.973'E	
			(4) 60°25.253'N 22°10.373'E	
			(5) 60°25.333'N 22°10.370'E	
			(6) 60°25.329'N 22°09.228'E	
			(7) 60°25.276'N 22°09.439'E	
6		26, 190, D706, D706.2		
Add		Swept area edge line between positions:	(1) 60°25.329'N 22°09.228'E	
			(2) 60°25.333'N 22°10.370'E	
			(3) 60°25.344'N 22°09.921'E	
			(4) 60°25.358'N 22°09.431'E	
			(5) 60°25.329'N 22°09.228'E	
7		26, 190, D706, D706.2		
Add		Swept area edge line between positions:	(1) 60°25.253'N 22°10.373'E	
			(2) 60°25.691'N 22°11.739'E	
			(3) 60°25.749'N 22°11.671'E	
			(4) 60°25.682'N 22°11.502'E	
			(5) 60°25.642'N 22°11.387'E	
			(6) 60°25.386'N 22°10.579'E	
			(7) 60°25.333'N 22°10.370'E	
			(8) 60°25.253'N 22°10.373'E	
8		190, 190.C, D706.2		
Delete		Between the following positions:	(1) 60°24.28'N 22°07.27'E	
			(2) 60°26.02'N 22°12.55'E	
9		190, D706.2		
Delete	11,0m		60°25'N	22°08'E
10		190, D706.2		
Delete	(see Note)		60°25.04'N	22°08.18'E
11		190, D706.2		
Delete	11,0m		60°25.8'N	22°11.9'E
12		190, D706		
Delete the note text. See picture.				

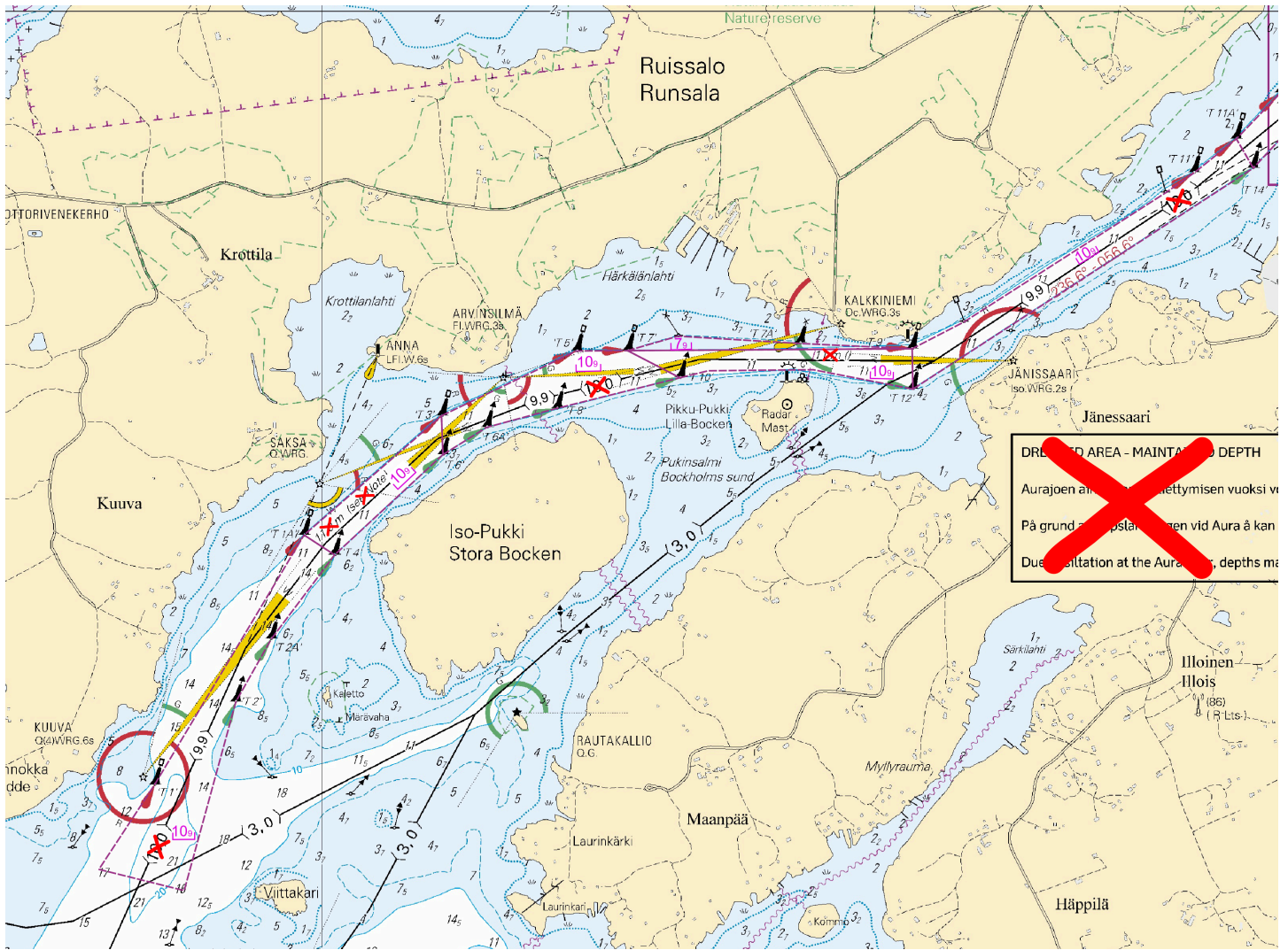


Image for reference, chart extracts not to scale of chart.

26, 190, 190.C, D706, D706.2

Add



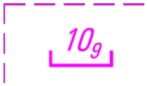
Swept area edge line between positions:

- | | | |
|-----|-------------|-------------|
| (1) | 60°25.691'N | 22°11.739'E |
| (2) | 60°25.795'N | 22°11.935'E |
| (3) | 60°25.912'N | 22°12.277'E |
| (4) | 60°25.981'N | 22°12.618'E |
| (5) | 60°26.065'N | 22°12.492'E |
| (6) | 60°25.987'N | 22°12.219'E |
| (7) | 60°25.840'N | 22°11.848'E |
| (8) | 60°25.749'N | 22°11.671'E |
| (9) | 60°25.691'N | 22°11.739'E |

15

26, 190, 190.C, D706, D706.2

Add



Swept area edge line between positions:

- (1) 60°25.981'N 22°12.618'E
- (2) 60°26.049'N 22°12.910'E
- (3) 60°26.327'N 22°13.064'E
- (4) 60°26.432'N 22°13.054'E
- (5) 60°26.439'N 22°12.976'E
- (6) 60°26.386'N 22°12.960'E
- (7) 60°26.391'N 22°12.897'E
- (8) 60°26.375'N 22°12.886'E
- (9) 60°26.381'N 22°12.819'E
- (10) 60°26.234'N 22°12.724'E
- (11) 60°26.229'N 22°12.755'E
- (12) 60°26.208'N 22°12.742'E
- (13) 60°26.213'N 22°12.711'E
- (14) 60°26.141'N 22°12.664'E
- (15) 60°26.124'N 22°12.656'E
- (16) 60°26.108'N 22°12.643'E
- (17) 60°26.065'N 22°12.492'E
- (18) 60°25.981'N 22°12.618'E

16

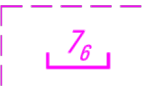
26, 190, 190.C, D706, D706.2


Add




Swept area edge line between positions:

- (1) 60°26.371'N 22°13.060'E
- (2) 60°26.327'N 22°13.064'E
- (3) 60°26.049'N 22°12.910'E
- (4) 60°25.981'N 22°12.618'E
- (5) 60°26.004'N 22°12.969'E
- (6) 60°25.980'N 22°13.333'E
- (7) 60°26.001'N 22°13.346'E
- (8) 60°26.029'N 22°13.168'E
- (9) 60°26.025'N 22°13.165'E
- (10) 60°26.039'N 22°13.101'E
- (11) 60°26.074'N 22°12.988'E
- (12) 60°26.079'N 22°12.991'E
- (13) 60°26.092'N 22°13.007'E
- (14) 60°26.165'N 22°13.137'E
- (15) 60°26.175'N 22°13.138'E
- (16) 60°26.193'N 22°13.106'E
- (17) 60°26.160'N 22°13.013'E
- (18) 60°26.168'N 22°13.004'E
- (19) 60°26.209'N 22°13.115'E
- (20) 60°26.346'N 22°13.190'E
- (21) 60°26.371'N 22°13.060'E

17		26, 190, 190.C, D706, D706.2		
Add		Swept area edge line between positions:	(1)	60°26.052'N 22°13.101'E
			(2)	60°26.074'N 22°12.988'E
			(3)	60°26.039'N 22°13.101'E
			(4)	60°26.025'N 22°13.165'E
			(5)	60°26.029'N 22°13.168'E
			(6)	60°26.038'N 22°13.121'E
			(7)	60°26.041'N 22°13.114'E
			(8)	60°26.043'N 22°13.116'E
			(9)	60°26.046'N 22°13.098'E
			(10)	60°26.052'N 22°13.101'E

18		190.C, D706.2		
Add		Swept area edge line between positions:	(1)	60°26.048'N 22°13.119'E
			(2)	60°26.052'N 22°13.101'E
			(3)	60°26.046'N 22°13.098'E
			(4)	60°26.043'N 22°13.116'E
			(5)	60°26.048'N 22°13.119'E

19		190.C, D706.2		
Add		Swept area edge line between positions:	(1)	60°26.381'N 22°12.819'E
			(2)	60°26.375'N 22°12.886'E
			(3)	60°26.391'N 22°12.897'E
			(4)	60°26.398'N 22°12.832'E
			(5)	60°26.395'N 22°12.824'E
			(6)	60°26.381'N 22°12.819'E

20
 190.C, D706.2
 Delete text "Maintained depth 11,0 m (see Note)". See picture.

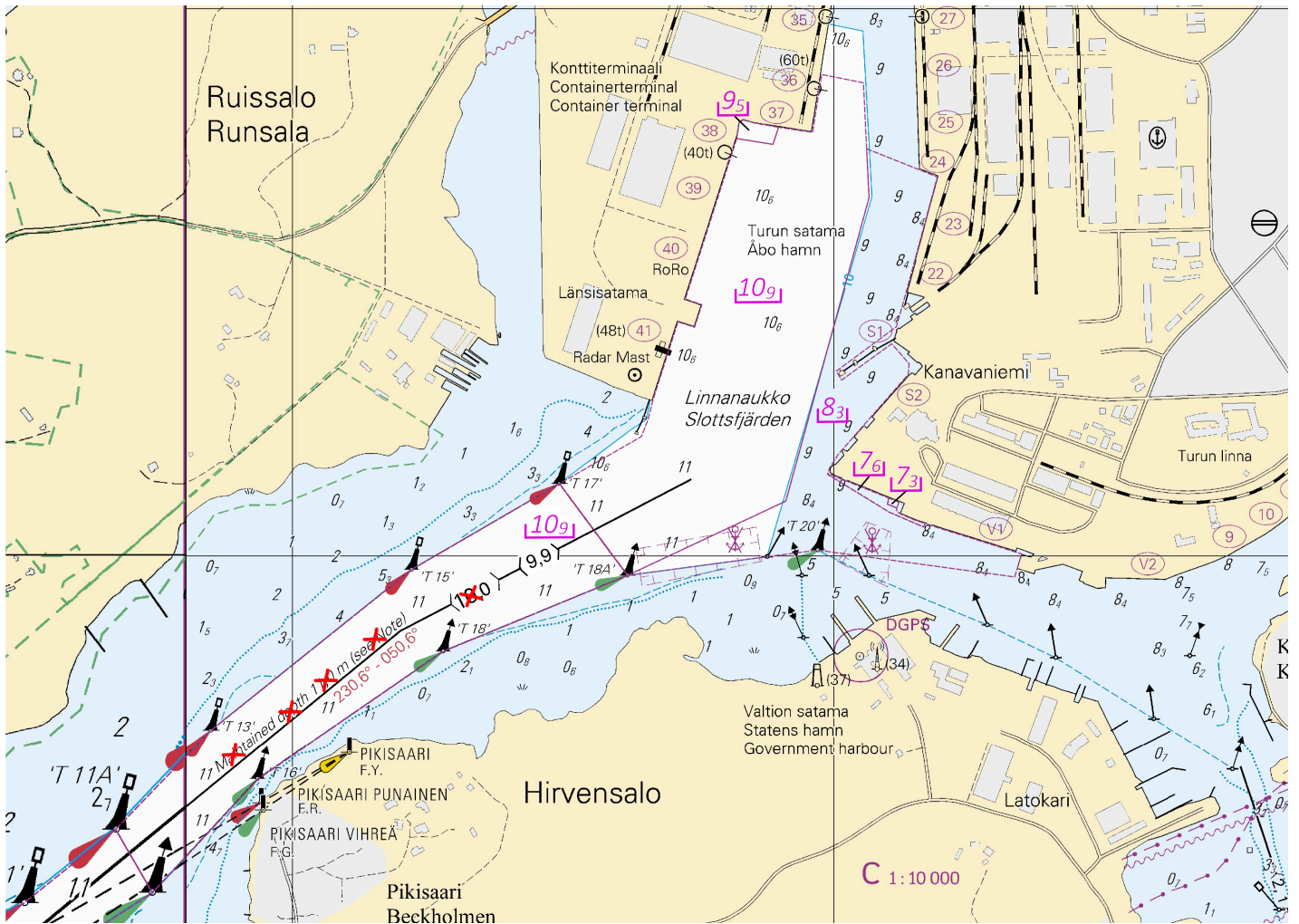


Image for reference, chart extracts not to scale of chart.

(Traficom, Helsinki/Helsingfors 2025)

Bay of Bothnia


*54/2025


2025-03-31

Finland. Bay of Bothnia. SW of Lighthouse Kemi 1. (N2000) (BSCD2000).
Fairway areas

Charts		Previous
56	(INT 1147)	232/2024 ↗
60	(INT 1152)	7/2025 ↗
958	(INT 1209)	17/2025 ↗
8071/INDEX		17/2025 ↗

References:85/2024 [↗](#)

1	60, 958, 8071/INDEX			
Add 	Swept area edge line between positions:	(1)	65°20.390'N	23°56.075'E
		(2)	65°18.124'N	23°50.838'E
		(3)	65°15.745'N	23°48.916'E
		(4)	65°11.738'N	23°51.181'E
		(5)	65°11.701'N	23°53.032'E
		(6)	65°15.706'N	23°50.773'E
		(7)	65°17.729'N	23°52.552'E
		(8)	65°19.977'N	23°57.089'E
		(9)	65°20.390'N	23°56.075'E

2	56, 60, 958, 8071/INDEX			
Add 	Swept area edge line between positions:	(1)	65°10.960'N	23°53.449'E
		(2)	65°10.962'N	23°51.618'E
		(3)	65°09.113'N	23°52.659'E
		(4)	65°05.084'N	23°47.356'E
		(5)	65°04.590'N	23°29.872'E
		(6)	65°03.785'N	23°30.016'E
		(7)	65°04.533'N	23°57.046'E
		(8)	65°10.960'N	23°53.449'E

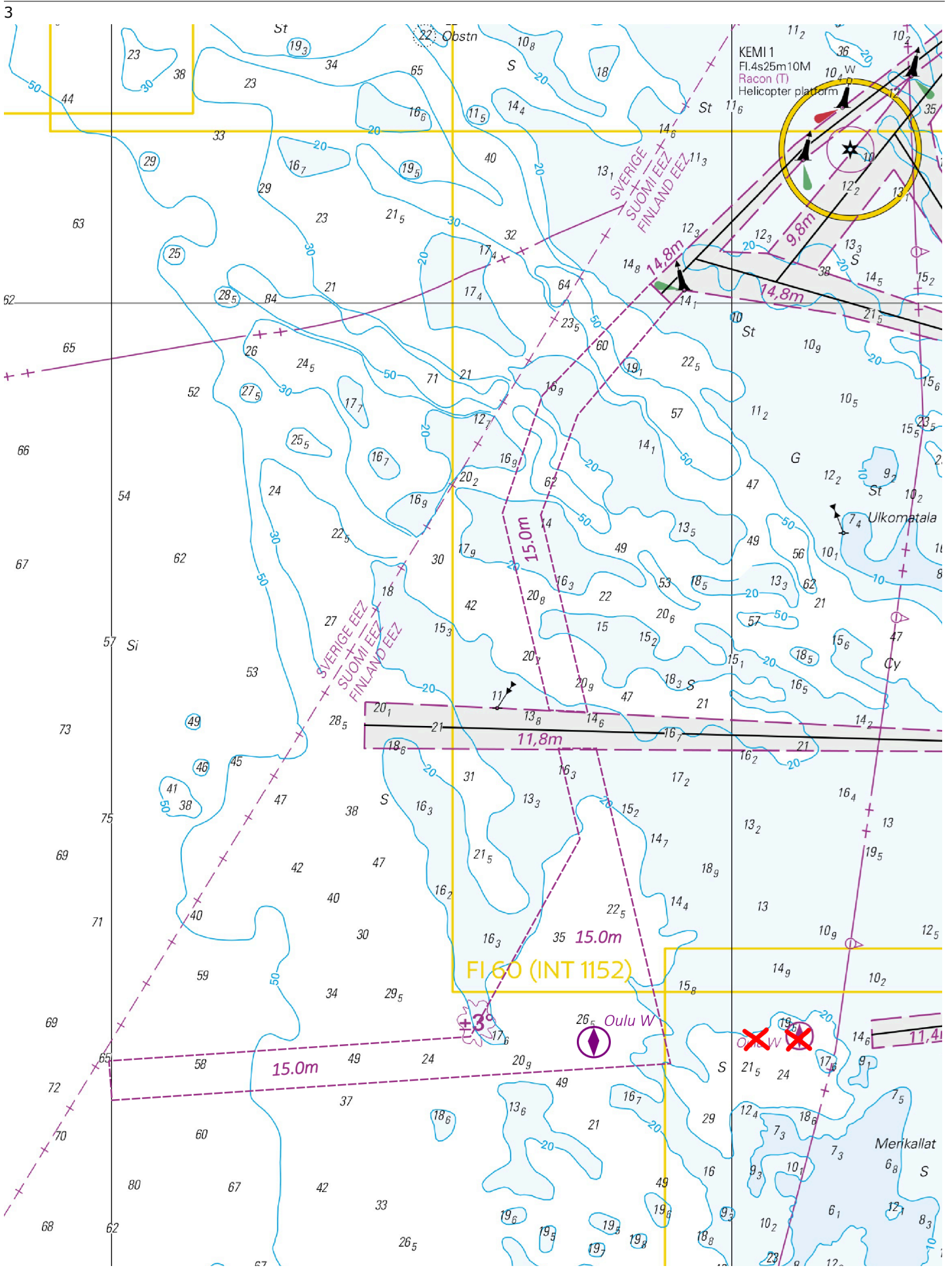


Image for reference, chart extracts not to scale of chart.

Announcements

*55/2025

2025-03-31

Finland. New chart editions. (N2000) (BSCD2000).

Charts

Previous

References:241/2024 [↗](#)

1

Nimi	Oikaisupäivämäärä	Myyntipäivämäärä	Painos
Namn	Rättelsedatum	Utgivningsdatum	Upplaga
Name	Correction date	Release date	Edition
Merikarttasarja J (Heinola - Lahti - Jyväskylä)	20.2.2025	28.3.2025	2025
Sjökortsserie J (Heinola - Lahti - Jyväskylä)	20.2.2025	28.3.2025	2025
Chart folio J (Heinola - Lahti - Jyväskylä)	20.2.2025	28.3.2025	2025

(Traficom, Helsinki/Helsingfors 2025)

*56/2025

2025-03-31

Finland. Global navigation satellite systems disturbance. Notice repeated.

Charts

Previous

References:1/2025 [↗](#)

1

GNSS interference in waterborne transport

GNSS interference in the Gulf of Finland began at the end of April, and signal disruptions are still observed in waterborne transport. Reports of interference have been particularly frequent in the eastern parts of the Gulf of Finland.

Interference affects the reliability of positioning by disrupting GNSS reception. When interference occurs, mariners cannot fully trust widely used GNSS-based navigation systems but have to rely on back-up systems instead.

If interference remains undetected, the risks caused by positioning errors increase, particularly in the narrow channels in the archipelago and in poor visibility. Interference is easier to detect when radar and electronic navigational charts are used simultaneously with radar image overlaid on the chart. The skills and professional competence of the crew are highlighted in the event of GNSS issues. If GNSS positioning data is lost, nautical charts, compasses and radars can still be used for navigation.

Fintraffic Vessel Traffic Services (VTS) have updated their instructions on how to operate in the event of GNSS interference. The VTS centre supports ships and gives ships arriving in the VTS area all the information they need for safe navigation, including information about any GNSS issues.

The Finnish Transport and Communications Agency Traficom's website includes a situational picture of interference in satellite navigation services in Finland.

<https://tieto.traficom.fi/en/statistics/satellite-navigation-service-interference-finland>

Any radio interference observed at sea should always be reported to Traficom:

Current Preliminary (P) and Temporary (T) notices (31.03.2025)

Gulf of Finland

T&P	Charts	Gulf of Finland
174(T)/2019 ↗	951	SE of Bol'soj Tjuters. Obstructions
296(T)/2020 ↗	17, 18, 191, 952, A, B	Helsinki. Sipoo. Areas and borders
20(T)/2021 ↗	951, A	TSS OFF ROOSHER ISLAND. Lighthouse Rodser extinguished. Notice repeated. Buoyage
228(T)/2021 ↗	951, A	Krestovyy. Lighthouse Krestovyy extinguished. Notice repeated. Buoyage
304(T)/2021 ↗	18, 192, A, B	Helsinki. Vuosaari. Notice repeated. Buoyage. Areas and borders
65(T)/2022 ↗	A, S	Vyborg. Destroyed leading beacon. Notice repeated. Buoyage
66(T)/2022 ↗	A, S	Vyborg. Light extinguished. Notice repeated. Buoyage
86(T)/2022 ↗	18, 191, 952, A, B	Helsinki. Kruunuvuori. Restrictions on small craft traffic. Fairways
90(T)/2022 ↗	951	Tiskolovo. Lighthouse Kajbolovo. Buoyage
229(T)/2023 ↗	18, 191, A, B	Helsinki. Hernesaari. Buoyage
230(T)/2023 ↗	18, 191, A, B	Helsinki. Hernesaari. Buoyage. Areas and borders
194(T)/2024 ↗	18, 191, A, B	Helsinki. Sompasaari. Buoyage
230(T)/2024 ↗	18, 191, A, B	Helsinki. Melkki. Light Melkki extinguished. Buoyage
238(T)/2024 ↗	17, 952, A	Off Porvoo. Lighthouse Porvoon majakka unlit. Buoyage
284(T)/2024 ↗	18, 191, A, B	Helsinki. Hakaniemi. Bridge construction work. Areas and borders
21(T)/2025 ↗	951, 952	E of lighthouse Kallbådagrund. Areas and borders

Archipelago Sea

T&P	Charts	Archipelago Sea
189(T)/2023 ↗	26, D	Pargas. Kirjala...Restrictions on traffic. Areas and borders
40(T)/2024 ↗	26, 190, D	Naantali. Raumakari. Särkänalmi. Kirkonsalmi. Notice repeated. Buoyage
130(T)/2024 ↗	27, D	Pargas. S of Utö. ODAS buoy. Buoyage
168(T)/2024 ↗	25, 26, 37, D	Pargas. Seili. ODAS buoy. Buoyage
239(T)/2024 ↗	27, 167, D	S of Utö. Söderdjupet. Measuring equipment on seabed. Areas and borders
250(T)/2024 ↗	26, D	Pargas. Hessund...Restrictions on traffic. Areas and borders
267(T)/2024 ↗	26, 190, D	Port of Turku. Construction works. Areas and borders

Aland Sea

T&P	Charts	Aland Sea
97(T)/2024	32, 160, C	Mariehamn. Lemströms canal...Restrictions on traffic. Areas and borders
155(T)/2024	31, 935, C	TSS SOUTH ÅLAND SEA. Light Flötjan extinguished. Buoyage

Bothnian Sea

T&P	Charts	Bothnian Sea
121(T)/2024	45, 46, 815, 816	Korsnäs. Measuring equipment on seabed. Obstructions
6(T)/2025	42, 125	Pori. Tahkoluoto. Notice repeated. Buoyage

The Quark

T&P	Charts	The Quark
238(T)/2022	48, 115, 921, F, M	Vaasa. Vaskiluoto. Notice repeated. Buoyage
126(T)/2023	48, 115, 820	Vaasa. Vaskiluoto. Dredging operations. Areas and borders
256(T)/2023	48, 115, 820	Vaasa. Vaskiluoto. Dredging operations. Notice repeated. Areas and borders
247(T)/2024	48, 820, 956, 957	Vaasa. Johansson. Buoyage
262(T)/2024	48, 115, 820	Vaasa. Vaskiluoto. (N2000) (BSCD2000). Buoyage. Fairway areas
279(T)/2024	48, 115, 820, 957, 8061, 8065	Vaasa. Vaskiluoto. Buoyage. Fairway areas
16(T)/2025	47, 825, 956, 957, 8065	Buoyage reinstated after the winter season. Buoyage

Bay of Bothnia

T&P	Charts	Bay of Bothnia
145(T)/2024	57, 846, 958, 8071	Hailuoto. Bridge construction work. Areas and borders
164(T)/2024	57, 119, 846	Oulu. Pikisaari. Fairways
197(T)/2024	57, 119, 845, 846	Oulu. Port of Oulu. Dredging operations. Areas and borders
270(T)/2024	57, 846	Hailuoto. Channel section closed for the winter season. Areas and borders
3(T)/2025	57, 60, 848, 958	Off Oulu. SW of Lighthouse Oulu 1. Lost buoy. Virtual AIS. Buoyage
7(T)/2025	60	Kemi. NE of Lighthouse Kemi 1...Winter break. Areas and borders
49(T)/2025	57, 119, 845, 846	Port of Oulu. (N2000) (BSCD2000)...Depths. Fairways. Fairway areas

Vuoksi watercourse

T&P

Charts

Vuoksi watercourse

214(T)/2020 [↗](#)

Leppävirta. Hyvärilä. Buoyage

Kymijoki watercourse

T&P

Charts

Kymijoki watercourse

-

-

Kokemäkjoki watercourse

T&P

Charts

Kokemäkjoki watercourse

-

-

Oulujoki watercourse

T&P

Charts

Oulujoki watercourse

-

-

Paatsjoki watercourse

T&P

Charts

Paatsjoki watercourse

-

-

Saimaa Canal

T&P

Charts

Saimaa Canal

254(T)/2024 [↗](#)

Saimaa Canal closed for the winter season.

Northern Baltic

T&P	Charts	Northern Baltic
11(T)/2024 ↗	952, 953, 954	Hiiumaa. Tahkuna. Light Lehtma extinguished. Buoyage

Announcements

T&P	Charts	Announcements
137(T)/2023 ↗		Helsinki. Korkeasaari...Restrictions on small craft traffic
102(T)/2024 ↗		Pargas. Hessund. Bridge construction work.