



# Notices to Mariners

## NtM 1/2026

Notices: 1 - 7 / 10.01.2026



# Table of Contents

<b>Title</b>	<b>Page</b>
Index by Area	2
Index by Chart	3
Gulf of Finland	4
Archipelago Sea	6
Bothnian Sea	7
Vuoksi watercourse	8
Kymijoki watercourse	9
Announcements	11
Current Preliminary (P) and Temporary (T) notices (09.01.2026)	12

# Index by Area

## **Gulf of Finland**

### **Charts**

\*1(T)/2026

22, 136, B

## **Archipelago Sea**

### **Charts**

\*2/2026

29, D

## **Bothnian Sea**

### **Charts**

\*3/2026

40, 801, D

## **Vuoksi watercourse**

### **Charts**

\*4/2026

213

## **Kymijoki watercourse**

### **Charts**

\*5/2026

302

\*6/2026

303

## **Announcements**

### **Charts**

\*7/2026

# Index by Chart

<b>Charts</b>	<b>Notices</b>
22	*1(T)/2026
29	*2/2026
40	*3/2026
136	*1(T)/2026
213	*4/2026
302	*5/2026
303	*6/2026
801	*3/2026
B	*1(T)/2026
D	*2/2026, *3/2026

# Gulf of Finland


\*1(T)/2026

2026-01-09

Finland. Gulf of Finland. Hanko. West Harbour. Construction works.  
Buoyage. Areas and borders

Charts		Previous
22	(INT 1254)	164/2025 <a href="#">↗</a>
136, 136.B	(INT 1154)	271/2024 <a href="#">↗</a>
B636, B637.1, B638		274/2025 <a href="#">↗</a>

Time: to approx. 1 June 2027

1	Add 	22, 136, 136.B, B636, B637.1, B638	59°49.204'N	22°56.752'E	89427
2	Add 	22, 136, 136.B, B636, B637.1, B638	59°49.224'N	22°56.856'E	89429
3	Add 	22, 136, 136.B, B636, B637.1, B638	59°49.241'N	22°57.059'E	89430
4	Add 	22, 136, 136.B, B636, B637.1, B638	59°49.242'N	22°57.112'E	89431
5	Add 	22, 136, 136.B, B636, B637.1, B638	59°49.232'N	22°57.147'E	89428
6	Add 	22, 136, 136.B, B636, B637.1, B638	Between the following positions:	<ul style="list-style-type: none"> <li>(1) 59°49.204'N 22°56.752'E</li> <li>(2) 59°49.224'N 22°56.856'E</li> <li>(3) 59°49.241'N 22°57.059'E</li> <li>(4) 59°49.242'N 22°57.112'E</li> <li>(5) 59°49.237'N 22°57.141'E</li> <li>(6) 59°49.232'N 22°57.147'E</li> </ul>	

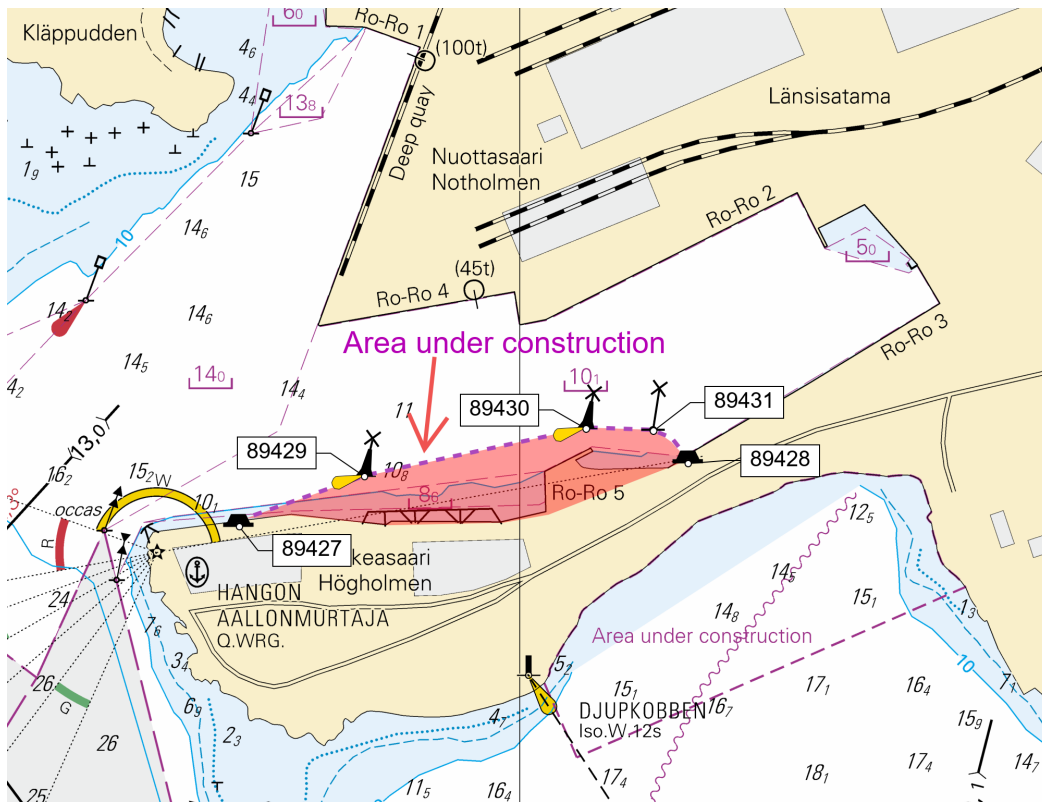


Image for reference, chart extracts not to scale of chart.

(Traficom, Helsinki/Helsingfors 2026)

# Archipelago Sea

\*2/2026

2026-01-09

Finland. Archipelago Sea. Pargas. Jumo. Buoyage

## Charts

29

(INT 1192)

D725

## Previous

/

284/2025 [↗](#)

1

29, D725

Amend



60°27.348'N

21°24.612'E

5078

(Traficom, Helsinki/Helsingfors 2026)

---

---

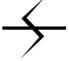
# Bothnian Sea


\*3/2026

2026-01-09

Finland. Bothnian Sea. Kustavi. Lehmäkurkku. Kiparluoto. Cables and pipelines

Charts	Previous
40	(INT 1131) 205/2025 <a href="#">↗</a>
801, 801.B	156/2025 <a href="#">↗</a>
D723, D723.3	2/2026 <a href="#">↗</a>

1	40, 801, 801.B, D723, D723.3			
Delete		Between the following positions:	(1) 60°39.903'N 21°19.255'E	
			(2) 60°40.055'N 21°19.706'E	

2	40, 801, 801.B, D723, D723.3			
Delete			60°39.90'N 21°19.13'E	

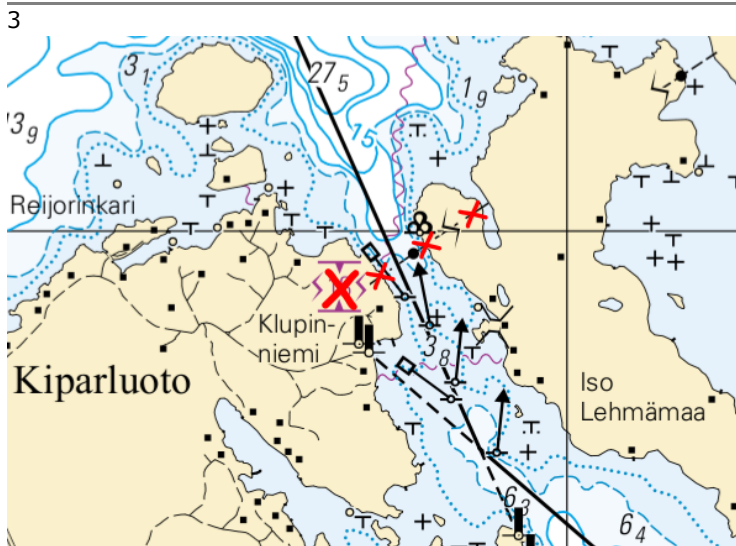


Image for reference, chart extracts not to scale of chart.

(Traficom, Helsinki/Helsingfors 2026)

# Vuoksi watercourse

\*4/2026

2026-01-09

Finland. Vuoksi watercourse. Puumala. Selkäsaari. Buoyage

	Charts				Previous
	213				/
1	213				
Delete				61°28.272'N 28°08.147'E	14198
2	213				
Amend				61°28.382'N 28°08.561'E	14199
3	213				
Delete	— — — —	Leading line between the following positions:	(1) 61°28.382'N 28°08.561'E		
			(2) 61°28.037'N 28°07.246'E		

(Traficom, Helsinki/Helsingfors 2026)

# Kymijoki watercourse

\*5/2026

2026-01-09

Finland. Kymijoki watercourse. Heinola. Vasikkasaari. Cables and pipelines

## Charts

302

## Previous

/

1

302

(1) 61°13.808'N 25°58.515'E

Add 

Between the following positions:

(2) 61°13.875'N 25°58.852'E

(3) 61°13.976'N 25°59.083'E

2

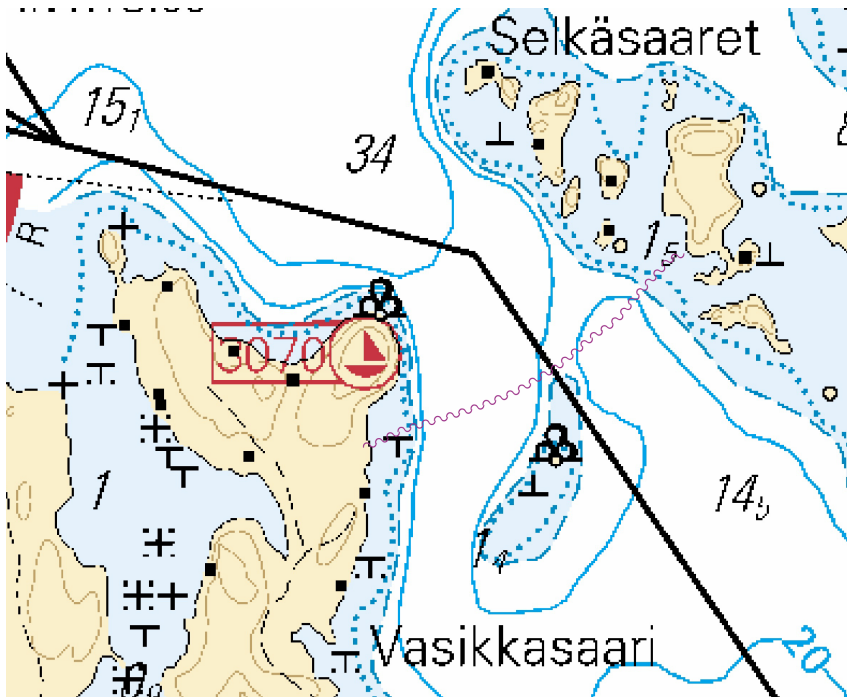


Image for reference, chart extracts not to scale of chart.

(Traficom, Helsinki/Helsingfors 2026)

\*6/2026

2026-01-09

Finland. Kymijoki watercourse. Asikkala. Valtionkärki. Cables and pipelines

**Charts**

303

**Previous**

/

1 303

(1) 61°15.350'N 25°46.209'E

(2) 61°15.513'N 25°46.439'E

(3) 61°15.623'N 25°46.814'E

Add 

Between the following positions:

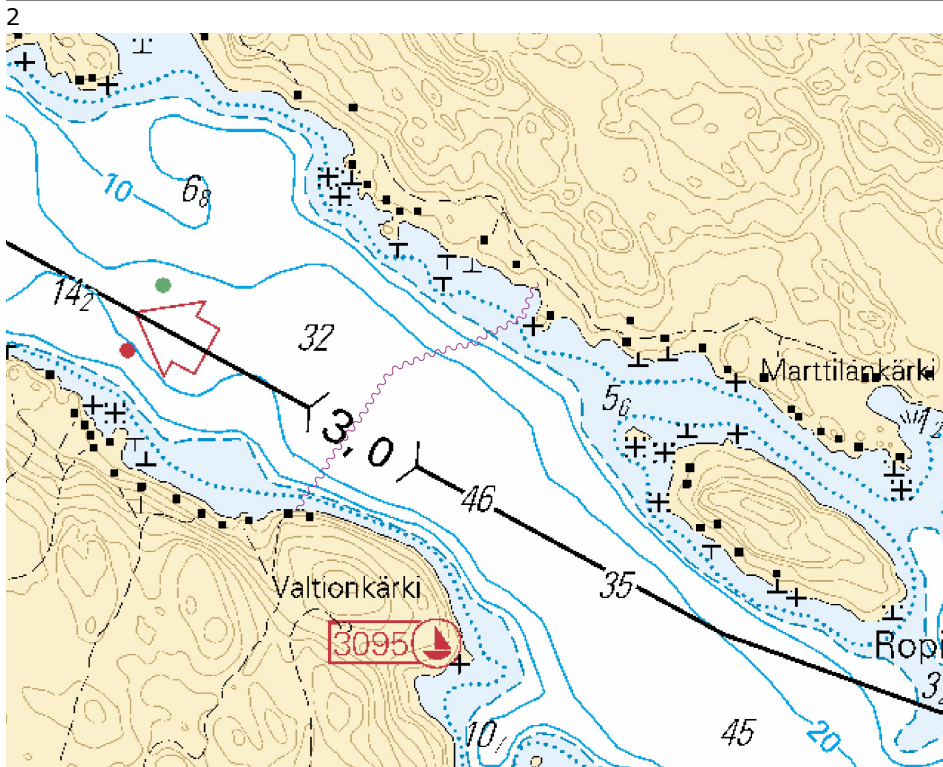


Image for reference, chart extracts not to scale of chart.

(Traficom, Helsinki/Helsingfors 2026)

# Announcements

\*7/2026

2026-01-09

Finland. General information of aids to navigation during winter conditions.

**Charts**

**Previous**

References:279/2025 [↗](#)

---

1

Conditions occurring during the winter and spring seasons – such as low temperatures, ice, snow and frost – may reduce the usability of aids to navigation. Aids to navigation may be off station, destroyed or damaged, and their lights may be unreliable or unlit. Aids to navigation may be temporarily replaced with virtual AIS AtoNs. After the winter season, the inspection of spar buoys and other buoys lasts several weeks. Vessels are advised to navigate with caution.

(Traficom, Helsinki/Helsingfors 2026)

---

---

# Current Preliminary (P) and Temporary (T) notices (09.01.2026)

## Gulf of Finland

T&P	Charts	Gulf of Finland
174(T)/2019 <a href="#">↗</a>	951	SE of Bol'soj Tjuters. Obstructions
296(T)/2020 <a href="#">↗</a>	17, 18, 191, 952, A, B	Helsinki. Sipoo. Areas and borders
20(T)/2021 <a href="#">↗</a>	951, A	TSS OFF ROOSHER ISLAND. Lighthouse Rodser extinguished. Notice repeated. Buoyage
228(T)/2021 <a href="#">↗</a>	951, A	Krestovyy. Lighthouse Krestovyy extinguished. Notice repeated. Buoyage
65(T)/2022 <a href="#">↗</a>	A, S	Vyborg. Destroyed leading beacon. Notice repeated. Buoyage
66(T)/2022 <a href="#">↗</a>	A, S	Vyborg. Light extinguished. Notice repeated. Buoyage
86(T)/2022 <a href="#">↗</a>	18, 191, 952, A, B	Helsinki. Kruunuvuori. Restrictions on small craft traffic. Fairways
90(T)/2022 <a href="#">↗</a>	951	Tiskolovo. Lighthouse Kajbolovo. Buoyage
230(T)/2023 <a href="#">↗</a>	18, 191, A, B	Helsinki. Hernesaari. Buoyage. Areas and borders
194(T)/2024 <a href="#">↗</a>	18, 191, A, B	Helsinki. Sompasaari. Buoyage
78(T)/2025 <a href="#">↗</a>	15, 16	Loviisa. SE of Lighthouse Tiiskeri. ODAS spar buoy. Buoyage
130(T)/2025 <a href="#">↗</a>	18, 191, A, B	Helsinki. Hernesaari. Notice repeated. Buoyage
176(T)/2025 <a href="#">↗</a>	18, 191, A, B	Helsinki. West Harbour...Restrictions on traffic. Areas and borders
189(T)/2025 <a href="#">↗</a>	952, A, B	Paldiski. Light Pakri extinguished. Buoyage
211(T)/2025 <a href="#">↗</a>	15, 16, 101, 103, 951, A	Loviisa. Valko. Geotechnical seabed surveys. Areas and borders
216(T)/2025 <a href="#">↗</a>	18, 191, A, B	Helsinki. Sompasaari. Nihti. Areas and borders
228(T)/2025 <a href="#">↗</a>	18, 191, 192, A, B	Helsinki. Santahamina. Areas and borders
229(T)/2025 <a href="#">↗</a>	17, 103, A	Porvoo. Kilpilahti. Dredging and excavation. Areas and borders
249(T)/2025 <a href="#">↗</a>	21, B	Raseborg. Ekenäs. (MSL/MW). Obstructions
1(T)/2026 <a href="#">↗</a>	22, 136, B	Hanko. West Harbour. Construction works. Buoyage. Areas and borders

## Archipelago Sea

T&P	Charts	Archipelago Sea
278(T)/2025 <a href="#">↗</a>	26, 190, D	Port of Turku. Construction works. Notice repeated. Areas and borders
284(T)/2025 <a href="#">↗</a>	26, D	Pargas. Kirjala...Restrictions on traffic. Areas and borders

## Aland Sea

T&P	Charts	Aland Sea
271(T)/2025 <a href="#">↗</a>	32, 160, 756, 757	Mariehamn. West Harbour. Construction works. Areas and borders

## Bothnian Sea

T&P	Charts	Bothnian Sea
6(T)/2025 <a href="#">↗</a>	42, 125	Pori. Tahkoluoto. Notice repeated. Buoyage
165(T)/2025 <a href="#">↗</a>	955	E of Söderhamn. Light Hällgrund extinguished. Buoyage
241(T)/2025 <a href="#">↗</a>	956, 957, 8065	Örnsköldsvik. Ullånger. Lights unlit. Buoyage

## The Quark

T&P	Charts	The Quark
247(T)/2024 <a href="#">↗</a>	48, 820, 956, 957	Vaasa. Johansson. Buoyage
254(T)/2025 <a href="#">↗</a>	47, 48, 822, 956, 957	Buoys and spar buoy temporarily withdrawn for the winter. Virtual AIS. Buoyage
264(T)/2025 <a href="#">↗</a>	47, 825, 956, 957, 8061, 8065	TSS IN NORRA KVARKEN. Buoys and spar buoys temporarily withdrawn for the wint...

## Bay of Bothnia

T&P	Charts	Bay of Bothnia
145(T)/2024 <a href="#">↗</a>	57, 846, 958, 8071	Hailuoto. Bridge construction work. Areas and borders
164(T)/2024 <a href="#">↗</a>	57, 119, 846	Oulu. Pikisaari. Fairways
3(T)/2025 <a href="#">↗</a>	57, 60, 848, 958	Off Oulu. SW of Lighthouse Oulu 1. Lost buoy. Virtual AIS. Buoyage
83(T)/2025 <a href="#">↗</a>	57, 846	Hailuoto. Boating passages at the Riutunkari and Huikku bridges.
117(T)/2025 <a href="#">↗</a>	59, 854	Off Tornio. Maintenance of aids to navigation. Buoyage
257(T)/2025 <a href="#">↗</a>	60, 958	Buoys temporarily withdrawn for the winter. Virtual AIS. Buoyage
266(T)/2025 <a href="#">↗</a>	57, 846	Hailuoto. Boating passages at the Huikku bridge. Areas and borders

## Vuoksi watercourse

T&P	Charts	Vuoksi watercourse
64(T)/2025 <a href="#">↗</a>	L	Lappeenranta. Muukonsaari. Buoyage
72(T)/2025 <a href="#">↗</a>	M	Varkaus. Kortesaaret. Buoyage

## Kymijoki watercourse

T&P	Charts	Kymijoki watercourse
-	-	

## Kokemäijoki watercourse

T&P	Charts	Kokemäijoki watercourse
-	-	

## Oulujoki watercourse

T&P	Charts	Oulujoki watercourse
-	-	

## Paatsjoki watercourse

T&P	Charts	Paatsjoki watercourse
-	-	

## Saimaa Canal

T&P	Charts	Saimaa Canal
247(T)/2025 <a href="#">↗</a>		Saimaa Canal closed for the winter season.

## Northern Baltic

T&P	Charts	Northern Baltic
11(T)/2024 <a href="#">↗</a>	952, 953, 954	Hiiumaa. Tahkuna. Light Lehtma extinguished. Buoyage
259(T)/2025 <a href="#">↗</a>	952, 953, 954	Hiiumaa. Lehtma. Withdrawn pilot boarding place. Pilotage

## Announcements

T&P	Charts	Announcements
137(T)/2023 <a href="#">↗</a>		Helsinki. Korkeasaari...Restrictions on small craft traffic
102(T)/2024 <a href="#">↗</a>		Pargas. Hessund. Bridge construction work.
251(T)/2025 <a href="#">↗</a>		Archipelago Sea. Naval exercise Freezing Winds 25.